

the
DIMITRIS **BERTSIMAS**

Collection of
Important Great Britain
Stamps & Multiples



INTERNATIONAL

Robert A. Siegel

IN ASSOCIATION WITH CHARLES F. SHREVE

SALE 1198 • MARCH 19, 2019

the
DIMITRIS **BERTSIMAS**

Collection of
Important Great Britain
Stamps & Multiples

SALE 1198—TUESDAY, MARCH 19, 2019, AT 1:30 P.M. (LOTS 3001-3148)



Live auction at 6 West 48th Street (off Fifth Avenue), 9th Floor, New York City

All lots sold subject to an **18% buyer's premium** and
applicable sales tax or customs duty

Please carefully read the Conditions of Sale before bidding

Presale Viewing:
Monday, March 18, 10am-4pm
and by appointment (please call 212-753-6421)

I N T E R N A T I O N A L
Robert A. Siegel
IN ASSOCIATION WITH CHARLES F. SHREVE

6 WEST 48TH STREET, 9TH FLOOR, NEW YORK, N.Y. 10036
Phone (212) 753-6421 • Fax (212) 753-6429 • E-mail: stamps@siegelauctions.com

Catalogues, internet bidding, resources, archives and the Siegel Encyclopedia at
siegelauctions.com



INTERNATIONAL
Robert A. Siegel
 IN ASSOCIATION WITH CHARLES F. SHREVE

6 WEST 48TH STREET, 9TH FLOOR, NEW YORK, N.Y. 10036
 Phone (212) 753-6421 • Fax (212) 753-6429 • Email: stamps@siegelauctions.com
siegelauctions.com



Scott R. Trepel
 President
 strepel
 @siegelauctions.com



John P. Zuckerman
 Senior Vice President
 jzuckerman
 @siegelauctions.com



Corey Long
 Senior Vice President
 clong
 @siegelauctions.com

Siegel International
 Dallas (214) 754-5991



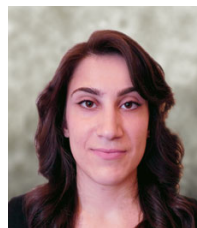
Charles F. Shreve
 Director, Siegel International
 charles
 @siegelauctions.com



Daphne Aitken
 Accounts
 daphne
 @siegelauctions.com



Helen Stewart
 VP, Operations
 helen
 @siegelauctions.com



Jocelyn Weibel
 Digital Production
 jocelyn
 @siegelauctions.com



Andrew Titley
 International Specialist
 andrew
 @siegelauctions.com



Chris Anderson
 International Specialist
 chris
 @siegelauctions.com

Scott R. Trepel Principal Auctioneer (licensed by NYC Dept. of Consumer Affairs, #795952)

Information for Bidders

Bidding

The following means are available for placing bids:

- 1) Attending the Live Auction in Person:** All bidders must register for a paddle, and new bidders must provide references at least three business days in advance of the sale.
- 2) Live Internet Bidding:** Instructions for participating as a Live Internet Bidder are provided on the page opposite.
- 3) Phone Bidding:** Bidders can be connected to the sale by phone and bid through a member of staff. Requests for phone bidding are subject to approval (please contact our office at least 24 hours before the sale). A signed Bid Form is required.
- 4) Absentee Bids.** All bids received in advance of the sale, either by mail, fax, phone, email or internet, are Absentee Bids, which instruct the auctioneer to bid up to a specific amount on one or more lots in the sale. Absentee Bids sent by phone, fax or email should arrive at least one hour prior to the start of the sale session. Bids entered through Live Internet Bidding will be visible to the auctioneer during the sale. Written bids should be entered legibly on the Bid Form in the sale catalogue. Email and internet bids should be carefully typed and double-checked. All new bidders must provide references. We recommend calling or e-mailing to confirm that Absentee Bids sent by mail, fax or email have been received and entered.

Pre-Sale Viewing

Subject to availability, certain lots (except group lots) can be sent to known clients for examination. Requests must be made no later than 7 days prior to the sale. Lots must be returned on the day received. Postage/insurance costs will be invoiced.

In addition to regular viewing, clients may view lots by appointment. Our staff will be pleased to answer questions or provide additional information about lots.

Expert Certification

Individual items offered without a certificate dated within the past five years may be purchased subject to independent certification of genuineness and our description. **Please refer to the Conditions of Sale and Grading Terms for policies governing certification.**

Shipping and Delivery

Procedures and charges for shipping lots are printed on the back of the Bid Form. **Bidders are responsible for all prescribed shipping charges and any applicable sales tax or customs duties.**

Price Realized

Prices realized are sent with each invoice. Bidders with email will receive a Bid Results report after the sale. Session results are posted immediately to **siegelauctions.com**

Live Internet Bidding at Siegel Auctions

REGISTERED BIDDERS MAY BID IN THIS SALE USING LIVE INTERNET BIDDING

This step-by-step guide will instruct you how to register, set your browser and use the bidding interface.

Start by following the simple steps to become a registered Live Internet Bidder.

Once you have been approved for bidding, you can listen to the auction and place bids with the click of a mouse.

Registering with STAMP AUCTION NETWORK & SIEGEL AUCTION GALLERIES

Live Internet Bidding is managed by Stamp Auction Network (SAN).

To bid, you must be registered and approved by both SAN and Siegel.

To decide what you need to do, choose the description below that best fits you.



I've already registered with SAN and have been approved by Siegel for internet bidding

I'm a Siegel client, but I'm not registered with SAN

Go to stampauctionnetwork.com/siegel and click on "Register" at the top. Check the box for Robert A. Siegel Auction Galleries (under "R") and submit the form, indicating you are a Siegel client. Once registered at SAN, you're ready for internet bidding.

I've bid through SAN before, but this is the first time I've bid in a Siegel sale

Then you just need to be approved by Siegel. Go to stampauctionnetwork.com/siegel and click on "Update Registration" at the top. Your SAN account information will be sent to us for approval (you might be asked for other trade references). Once approved by Siegel for bidding, you're ready for internet bidding.

I've never bid with Siegel, nor registered with SAN

Go to stampauctionnetwork.com/siegel and click on "Register" at the top. Check the box for Robert A. Siegel Auction Galleries (under "R") and submit the form with your trade references (please, no family members or credit card companies as references). Once registered at SAN and approved by Siegel for bidding, you're ready for internet bidding.

Live Internet Bidding works by allowing registered bidders to observe and place bids.

Live Internet Bidding will work with any browser on both PC and Mac operating systems.

Before bidding by internet for the first time, we recommend finding a sale in progress and listening to the public broadcast or logging in as a registered bidder. This will help you develop a feel for the sale tempo and bidding interface.

Log on to the auction at stampauctionnetwork.com

When you're logged on as a Live Internet Bidder, the bidding interface shows a photo and description of the lot, the current bid (and your bidding status), options for placing competitive bids and buttons with bid increments.

- After you click on a bid amount, the auctioneer is immediately notified of your bid.
- Retracting a bid is usually not acceptable, so please bid carefully.
- If you bid and then decide to stop, the "Pass" button will tell the auctioneer you are no longer bidding.
- You can send messages to the auctioneer (for example, a request for extension).
- You can track prior realizations from the bidding screen.

Robert A. Siegel Auction Galleries, Inc.'s Sale 1185

Closing on June 27, 2018. [Listen to the Auction.](#)
Contact us by Phone at (212) 753-6421, [Contact us Via eMail.](#)

F11 (if using Internet Explorer) toggles full

Lot and Description	Bidding
	<input type="button" value="Bid 280000"/> <input type="button" value="Bid 290000"/> <input type="button" value="Bid 300000"/> <input type="button" value="Bid 310000"/> <input type="button" value="Bid 320000"/> <input type="button" value="Bid 330000"/>
United States Inverted Jenny Positions 15 and 6 Lot 91. 24c Carmine Rose & Blue, Center Inverted (C3a). Position 15, the fifth stamp from the left in the second row of the sheet, original gum, deep rich colors, tiny thin spot just below the plane, faint traces of purple ink above the bottom left (2 image)	
\$ 450,000.00 Sold for \$ 270,000.00 Your Bid \$ 0.00	Send a Message to the Auctioneer

"System Down" or "Lost Connection" events do occasionally happen.

If you have any problems with Live Internet Bidding please call 212-753-6421 for immediate assistance.

Conditions of Sale (please read carefully before bidding)

THE PROPERTY IN THIS CATALOGUE WILL BE OFFERED AT PUBLIC AUCTION BY ROBERT A. SIEGEL AUCTION GALLERIES, INC. ("GALLERIES") ON BEHALF OF VARIOUS CONSIGNORS AND ITSELF OR AFFILIATED COMPANIES. BY BIDDING ON ANY LOT, WHETHER DIRECTLY OR THROUGH A THIRD PARTY, IN PERSON, BY TELEPHONE, FACSIMILE, INTERNET OR BY ANY OTHER MEANS, THE BIDDER ACKNOWLEDGES AND AGREES TO ALL OF THE FOLLOWING CONDITIONS OF SALE.

1. The highest bidder acknowledged by the auctioneer shall be the buyer. The term "final bid" means the last bid acknowledged by the auctioneer, which is normally the highest bid offered. **The purchase price payable by the buyer will be the sum of the final bid and a commission of 18% of the final bid ("buyer's premium"), together with any sales tax, use tax or customs duties due on the sale.**

2. The auctioneer has the right to reject any bid, to advance the bidding at his discretion and, in the event of a dispute, to determine the successful bidder, to continue the bidding or to reoffer and resell the lot in dispute. The Galleries' record of the final sale shall be conclusive.

3. All bids are per numbered lot in the catalogue unless otherwise announced by the auctioneer at the time of sale. The right is reserved to group two or more lots, to withdraw any lot or lots from the sale, or to act on behalf of the seller. The Galleries will execute bidding instructions on behalf of clients, but will not be responsible for the failure to execute such bids or for any errors in the execution of such bids.

4. **Lots with numbers followed by the symbol ° are offered subject to a confidential minimum bid ("reserve"), below which the lot will not be sold. The absence of the symbol ° means that the lot is offered without a reserve. If there is no reserve, the auctioneer has sole discretion to establish a minimum opening bid and may refuse an offer of less than half of the published estimate. Any lot that does not reach its reserve or opening bid requested by the auctioneer will be announced as "passed" and excluded from the prices realized lists after the sale. The Galleries may have a direct or indirect ownership interest in any or all lots in the sale resulting from an advance of monies or goods-in-trade or a guarantee of minimum net proceeds made by the Galleries to the seller.**

5. Subject to the exclusions listed in 5(A), the Galleries will accept the return of lots which have been misidentified or which have obvious faults that were present when the lot was in the Galleries' custody, but not so noted in the lot description. **All disputed lots must be received by the Galleries intact with the original packing material within 5 days of delivery to the buyer but no later than 30 days from the sale date.** (5A) EXCLUSIONS: The following lots may not be returned for any reason, or may not be returned for the reasons stated: i) lots containing 5 or more items; ii) lots from buyers who registered for the pre-sale exhibition or received lots by postal viewing, thereby having had the opportunity to inspect them before the sale; iii) any lot described with "faults," "defects" or a specific fault may not be returned because of any secondary fault; iv) photographed lots may not be returned because of centering, margins, short/nibbed perforations or other factors shown in the illustrations; v) the color of the item does not match the color reproduction in the sale catalogue or website listing; vi) the description contains inaccurate information about the quantity known or reported; or vii) a certification service grades a stamp lower than the grade stated in the description or on an accompanying certificate.

6. Successful bidders, unless they have established credit with the Galleries prior to the sale, must make payment in full before the lots will be delivered. Buyers not known to the Galleries must make payment in full within 3 days from the date of sale. **The Galleries retains the right to demand a cash deposit from anyone prior to bidder registration and/or to demand payment at the time the lot is knocked down to the highest bidder, for any reason whatsoever.** In the event that any buyer refuses or fails to make payment in cash for any lot at the time it is knocked down to him, the auctioneer reserves the right to reoffer the lot immediately for sale to the highest bidder. **Credit cards (Visa, Mastercard and Discover only) can be accepted as payment but will be subject to a 3% non-refundable Convenience Fee, which will be added to the total of the entire invoice (including hammer price, buyer's premium, shipping and transit insurance charges and any applicable taxes). The buyer waives the right to dispute all credit card charges.**

7. If the purchase price has not been paid within the time limit specified above, nor lots taken up within 7 days from the date of sale, the lots will be resold by whatever means deemed appropriate by the Galleries, and any loss incurred from resale will be charged to the defaulting buyer. **Any account more than 30 days in arrears will be subject to a late payment charge of 1½% per month as long as the account remains in arrears. Any expenses incurred in securing payment from delinquent accounts will be charged to the defaulter.** A fee of \$250.00 per check will be charged for each check returned for insufficient funds.

8. All lots are sold as genuine. **Any lot accompanied by a certificate issued by The Philatelic Foundation, British Philatelic Association, Royal Philatelic Society of London or any other authority recognized by the A.I.E.P. in a specific area of expertise, and dated within 5 years of the sale date, is sold "as is" and in accordance with the description on the certificate. Such lots may not be returned for any reason, including but not limited to a contrary certificate of opinion.** Buyers who wish to obtain a certificate for any item that does not have a certificate (dated as above) may do so, provided that the following conditions are met: (i) the purchase price must be paid in full, (ii) the item must be submitted to an acceptable expertizing committee with a properly executed application form within 21 days of the sale, (iii) a copy of the application form must be given to the Galleries, (iv) the Galleries retains the right to resubmit the item for reconsideration, without time limit or other restrictions, for the purpose of obtaining a satisfactory opinion, (v) lots submitted for certification will be considered cleared 90 days from the date of sale, whether or not a certificate has been issued, unless the Galleries issues written approval of a further extension of return privileges, and (vi) in the event the lot is determined to be misidentified or misdescribed, pursuant to 5 and 5(A) of these Conditions, the Galleries will issue a refund to the buyer for the full purchase price and actual certification fees up to \$800.00, but the reimbursement for certificate fees (and related costs) shall not exceed 10% of the hammer price of the lot.

9. Until paid for in full, all lots remain the property of the Galleries on behalf of the seller.

10. Agents executing bids on behalf of clients will be held responsible for all purchases made on behalf of clients unless otherwise arranged prior to the sale.

11. The buyer assumes all risk for delivery of purchased lots and agrees to pay for prescribed shipping costs. **Buyers who receive lots in the U.S. are obligated to pay whatever sales tax or compensating use tax might be due, at any time, and buyers outside the U.S. are responsible for all customs duties.**

12. **The bidder consents that any action or proceeding against it may be commenced and maintained in any court within the State of New York or in the United States District Court for the Southern District of New York, that the courts of the State of New York and United States District Court for the Southern District of New York shall have jurisdiction with respect to the subject matter hereof and the person of the bidder. The bidder agrees not to assert any defense to any action or proceeding initiated by Galleries based upon improper venue or inconvenient forum. The bidder agrees that any action brought by the bidder shall be commenced and maintained only in a Federal Court in the United States District Court for the Southern District of New York or the State Court in the county in which Galleries has its principal place of business in New York. The bidder agrees not to use a public conflict resolution service and not to use any form of social media to publish comments or information about the Galleries and its employees which might harm the Galleries' reputation or business. These Conditions of Sale shall be governed by and construed in accordance with the substantive laws of the State of New York, and shall constitute an agreement that shall be binding on the parties, and their respective heirs, administrators, distributees, successors and assignees.**

SCOTT R. TREPEL, Principal Auctioneer
Auctioneer's License No. 795952

N.Y.C. Department of Consumer Affairs
80 Lafayette Street, New York, N.Y. 10013
Telephone (212) 577-0111

Revised 5/2018

Grades, Abbreviations and Values Used in Descriptions

Grades and Centering

Our descriptions contain detailed information and observations about each item's condition. We have also assigned grades to stamps and covers, which reflect our subjective assessment. For stamps, the margin width, centering and gum are described and graded according to generally-accepted standards (an approximate correlation to numeric grades is provided at right). Although we believe our grades are accurate, they are not always exactly aligned with third-party grading terms or standards for all issues. **A lot may not be returned because a certification service grades a stamp lower than the grade stated in the description. Information from the P.S.E. Stamp Market Quarterly and P.S.E. Population ReportSM is the most current available, but lots may not be returned due to errors or changes in statistics or data.**

Extremely Fine Gem (90-100): The term "Gem" describes condition that is the finest possible for the issue. This term is equivalent to "Superb" used by grading services.







Extremely Fine (80-90): Exceptionally large/wide margins or near perfect centering.

Very Fine (70-85): Normal-size margins for the issue and well-centered with the design a bit closer to one side. "Very Fine and choice" applies to stamps that have desirable traits such as rich color, sharp impression, freshness or clarity of cancel.

Fine (60-70): Smaller than usual margins or noticeably off center. Pre-1890 issues may have the design touched in places.

Very Good (below 60): Attractive appearance, but margins or perforations cut into the design.

Guide to Gum Condition

Gum Categories:	MINT N.H.	ORIGINAL GUM (O.G.)				NO GUM
	 Mint Never Hinged <i>Free from any disturbance</i>	 Lightly Hinged <i>Faint impression of a removed hinge over a small area</i>	 Hinge Mark or Remnant <i>Prominent hinged spot with part or all of the hinge remaining</i>	 Part o.g. <i>Approximately half or more of the gum intact</i>	 Small part o.g. <i>Approximately less than half of the gum intact</i>	 No gum <i>Only if issued with gum</i>
Catalogue Symbol:	★ ★	★	★	★	★	(★)
PRE-1890 ISSUES	<i>Pre-1890 stamps in these categories trade at a premium over Scott value</i>			Scott Value for “O.G.”		Scott “No Gum” Values thru No. 218
1890-1935 ISSUES	Scott “Never Hinged” Values for Nos. 219-771	Scott Value for “O.G.” (Actual value will be affected by the degree of hinging)		Disturbed Original Gum: Gum showing noticeable effects of humidity, climate or hinging over more than half of the gum. The significance of gum disturbance in valuing a stamp in any of the Original Gum categories depends on the degree of disturbance, the rarity and normal gum condition of the issue and other variables affecting quality. For example, stamps issued in tropical climates are expected to have some		
1935 TO DATE	Scott Value for “Unused”					

Covers

Minor nicks, short edge tears, flap tears and slight reduction at one side are normal conditions for 19th century envelopes. Folded letters should be expected to have at least one file fold. Light cleaning of covers and small mends along the edges are accepted forms of conservation. Unusual covers may have a common stamp with a slight crease or tiny tear. **These flaws exist in virtually all 19th century covers and are not always described. They are not grounds for return.**

Catalogue Values and Estimates

Unless otherwise noted, the currently available *Scott Catalogue* values are quoted in dollars with a decimal point. Other catalogues are often used for foreign countries or specialized areas and are referred to by their common name: *Stanley Gibbons* (SG), *Dietz*, *American Air Mail Catalogue* (AAMC), *Michel*, *Zumstein*, *Facit*, etc. Estimates are indicated with an "E." and reflect our conservative valuation in dollars. Reserves will never exceed the low end of the estimate range; they will sometimes exceed Scott Catalogue value for stamps in Extremely Fine condition.

Because of certain pricing inconsistencies in the *Scott Catalogue*—for example, blocks that have no gum, the absence of premiums for Mint N.H. items, etc.—we cannot guarantee the accuracy of values quoted for multiples, specialized items and collection lots. We generally try to be conservative, but buyers may not return a lot because of a discrepancy in catalogue value due to Scott pricing inconsistencies.

Symbols and Abbreviations (see chart above for gum symbols)

⊞	Block	E	Essay	pmk.	Postmark	No.	Scott Catalogue Number
⊞	Cover	P	Proof	cds	Circular Datestamp	hs	Handstamp
FC	Fancy Cancel	TC	Trial Color Proof	var.	Variety	ms.	Manuscript



3001



3023



3049



3058



3059



3054



3065



3067



3091



3136



3116

The Joy of Stamp Collecting

DIMITRIS BERTSIMAS

For me, the joy of stamp collecting and my childhood are intimately connected. In common with so many other philatelists, I started collecting stamps in my youth. I began my first collection as an eight-year-old boy in the early 1970s in Athens, Greece. In this pre-internet era, the only readily available information about the history and geography of the world was contained in an old encyclopedia we had at home, written in a very formal, dry language that was quite uninspiring. So, when an uncle of mine gave me his collection of worldwide stamps, I discovered they were a much more exciting way to learn about the world. I fondly recall the many evenings I spent researching the persons and places depicted on the stamps in my collection — they even inspired me to read our encyclopedia. Philately helped me learn the capitals of many countries, the history of the first and second world wars, and the history of Greece, among so many other subjects.

I continued collecting during high school but stopped during the university years, graduate school and the early years as a professor at MIT. In my late 30s, I rediscovered stamp collecting through eBay. By far my best buy from this period was the Cyril Rowntree collection of British Commonwealth. This was a comprehensive mint collection beautifully presented in Scott albums. The collection was missing the rarities, but it had many complete sets in choice condition. I still have the six-page story of the collection from the eBay description. A few sentences in a letter written by the collector to the seller read: “I care little if the stamps in the collection are worth more or less than I paid. The collection has brought me many times what I paid in absolute joy... I hate to see these beautiful albums of joy broken up and the stamps scattered.”

With a significant base to build upon, I decided to form a comprehensive, high-quality collection of British Commonwealth stamps. To prepare, I studied the auction catalogues of collections formed by major past collectors: Caspary, Lilly, Burrus, and Dale-Lichtenstein, to mention a few. I attended my first auction in person in 2004. It was the Neal Allen collection of Great Britain and British Commonwealth stamps held by the auction firm of Charles Shreve. In this auction I met Mark Harvey, an extremely knowledgeable dealer in British Commonwealth stamps, and Frank Mandel, the person I know with the most encyclopedic knowledge and exquisite taste in philately. Charles, Mark and especially Frank became my trusted advisors and philatelic friends. They are all honest, passionate about philately, and extraordinarily knowledgeable.

I asked myself, how can I build a great collection? In addition to having the resources and access to honest and expert advice, the most significant strategy is to participate when major collections become available. Many of the major rarities are typically passed from one major collection to the next. In this context, when Sir Gawaine Baillie’s unparalleled collection of Great Britain and British Commonwealth became available, I decided that this was an opportunity of a lifetime to bring my Great Britain and British Commonwealth collection to another level. With the advantage of hindsight, I feel that this assessment was correct. Another significant opportunity was presented when the William H. Gross collection of Great Britain collection was offered at auction. The vast majority of stamps in the portion of my collection offered in this catalogue were bought in the auctions of Sir Gawaine and Gross collections of Great Britain stamps.

With my philatelic interests expanding, I have decided to focus on my British Commonwealth collection and part with the Great Britain stamps. This moment is bittersweet, as the sadness of parting with the stamps I love to collect is combined with the satisfaction of seeing them bring joy to other collectors as they find new homes.

My professional life has been focused in scientific research and education. In this context, I have greatly appreciated the philatelic research of the Siegel firm. The census information on major United States rarities has significantly educated me on the stamps’ relative rarity and made me a better, more informed collector. Unfortunately, such a census does not exist for Great Britain and British Commonwealth stamps. I asked Charles to initiate an effort by the Siegel firm to create a census of major Great Britain rarities, starting with some of the stamps in the current auction. I am very appreciative to Charles and the Siegel firm for responding with their usual professionalism, dedication and passion.

I sincerely hope the stamps in this auction will bring their new owners the same joy they brought me, Sir Gawaine and Bill Gross.

Extraordinary

Since first meeting Dimitris Bertsimas, I have watched and admired his development as an extraordinary stamp collector. Despite the great demands of his professional life as a brilliant mathematician, professor and skilled financial investor, Dimitris has focused his considerable intellect on building what has become one of the world's most outstanding stamp collections. He bids in numerous auctions around the world, finding items he needs and picking up "key" pieces wherever they might turn up. When a major collection is offered, he rises to the occasion and bids competitively for great items. After years of dedicated acquisition, his United States collection is among the finest and most valuable ever formed, and his country collections other than the U.S. are also quite impressive.

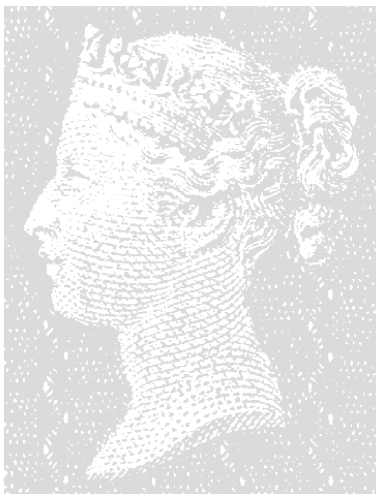
The sophisticated "flavor" of Dimitris's collecting style is evident in the wonderful Great Britain collection offered in this sale. He appreciates the single rarities that every collector needs — high-denomination Victoria, Edward VII and George V issues, including the Official stamps — but he also has a deep respect for and fascination with multiples, particular those with imprints and plate numbers. When I had the honor of representing him in the historic sale of the Sir Gawaine Baillie collection, he was most excited about the multiples. As you will see from the items offered here, he was successful in acquiring some of the greatest blocks and panes of the Line-Engraved and Surface Printed issues.

Based on my more than 40 years of experience in the stamp auction business, I can say with great confidence that the Great Britain Penny Black and Two-Pence Blue first issues are "easy" in comparison with the later issues, especially the Surface Printed stamps. To begin, the higher denominations — five and ten shillings, and one and five pounds sterling — required a considerable financial investment in the 19th century, which few collectors and dealers were willing to make. Quality is a much more challenging aspect of the later issues, because the centering is usually poor, and the long format of the pound values makes the stamps prone to damage. Finally, circumstances limiting the distribution of Official stamps resulted in very few becoming available to collectors. All in all, a Great Britain collection that shows strength in Surface Printed issues, as opposed to the early engraved issues, is a much more challenging achievement. I think Dimitris has shown himself to be an extraordinary philatelist in this respect.

This hardbound catalogue will be available at our stand (#80) at the Spring Stampex International 2019 exhibition and bourse in London, which will take place at the Business Design Centre (BDC) in Islington on February 13-16. Andrew Titley and myself will attend this event and be happy to meet with clients and prospective bidders.

On a personal note, I wish to thank Dimitris for his enduring confidence in me and for his decision to entrust this Great Britain collection to my team at Siegel International. As he expresses in his own introduction to this sale, stamps have brought him joy for years, and we hope that the new owners will derive as much pleasure from these extraordinary philatelic artifacts as Dimitris has.

— CHARLES F. SHREVE



the
DIMITRIS | BERTSIMAS
Collection of
Important Great Britain
Stamps & Multiples

TUESDAY, MARCH 19, 2019 AT 1:30 P.M.

LINE-ENGRAVED ISSUES



3001

3001° ★田 **1840, 1p Red Brown, Printed From “Black Plate” (SG Specialised AS69; SG 7; Scott 3 var).** Top left plate no. 10 corner sheet margin block of eight, state 1, lettered A-A to B-D, with part inscription “*PRICE 1d Per Label. 1/- Per Row of 12. £1... Per Sheet. Place the*” along top margin, large part original gum, intense shade and razor-sharp impression, light marginal paper crease just affecting position 1

EXTREMELY FINE AND STUNNING SHOWPIECE. A REMARKABLE PLATE NUMBER BLOCK OF THE ONE-PENNY RED BROWN PRINTED FROM THE “BLACK PLATES”.

Blocks from the “Black Plates” are quite elusive, but do exist. Plate number blocks, on the other hand, are major rarities, especially in such choice condition.

Ex Baillie. With 1980 B.P.A. certificate. SG simply as two blocks of four with no premium as a plate block £33,000 E. 15,000-20,000



3002

3002° ★田 **1847, 1p Red Brown (SG Specialised BS28; SG 8; Scott 3).** Block of 30 with sheet margin at left and inscription "PRICE 1d Per Label. 1/- Per Row of 12. £1...Per Sheet.", die 1, Plate 74, lettered M-A to Q-F, original gum, couple h.r.'s, margins mostly large to just touching along right side, rich color, variously creased and a few small faults as to be expected with a multiple of this size

FINE-VERY FINE. AN IMPRESSIVE SIZED MULTIPLE OF THE ONE-PENNY RED BROWN FROM PLATE 74. THERE ARE VERY FEW MULTIPLES LARGER THAN THE BLOCK OFFERED HERE.

According to records, Plate 74 was registered on Jan. 14, 1847. Ex Baillie.
..... E. 7,500-10,000

1847-52 ONE-PENNY RED BROWN IMPRIMATURS



3003



3004



3005

- 3003°P **1847, 1p Red Brown, Imprimatur (SG Specialised BS29 var; SG 8 var; Scott 3 var).** Plate 82, lettered A-C, sheet margin at top with part inscription “(o)f 12. £1... Per S(heet)”, other margins ample, bold color, crease in sheet margin as usual, Very Fine, ex Fisher, “Tes” and Baillie, SG £1,350..... E. 500-750
- 3004°P **1849, 1p Red Brown, Imprimatur (SG Specialised BS30 var; SG 8 var; Scott 3 var).** Plate 89, lettered I-L, sheet margin at right with part inscription “(t)he Labels ABOVE the”, other margins large, rich color, Very Fine and choice, ex Alcock and Baillie, SG £1,350 E. 500-750
- 3005°P **1849, 1p Red Brown, Imprimatur (SG Specialised BS31 var; SG 8 var; Scott 3 var).** Plate 92, lettered A-C, sheet margin at top with part inscription “(o)f 12. £1... Per S(heet)”, other margins large to ample, crease in margin as usual, Very Fine, ex “Tes” and Baillie, SG £1,350..... E. 500-750



3006



3007

- 3006°P **1849, 1p Red Brown, Imprimatur (SG Specialised BS31 var; SG 8 var; Scott 3 var).** Plate 101, lettered A-D, sheet margin at top with part inscription “(S)heet. Place the”, other margins full, crease in sheet margin as usual, Very Fine, ex “Tes” and Baillie, SG £1,350 E. 500-750
- 3007°P **1850, 1p Red Brown, Imprimatur (SG Specialised BS32 var; SG 8 var; Scott 3 var).** Plate 105, lettered A-C, sheet margin at top with part inscription “of 12. £1... Per”, other margins large to clear, crease in margin as usual, Very Fine, ex “Tes” and Baillie, SG £1,350..... E. 500-750



- 3008°P **1850, 1p Red Brown, Imprimatur (SG Specialised BS32 var; SG 8 var; Scott 3 var).** Plate 117, lettered A-C, sheet margin at top with part inscription “(o)f 12. £1... Per S(heet)”, other margins large to ample, excellent color, Very Fine, ex “Tes” and Baillie, SG £1,350 E. 500-750
- 3009°P **1852, 1p Red Brown, Imprimatur (SG Specialised B2 var; SG 8 var; Scott 3 var).** Plate 150, lettered A-E, sheet margin at top with part inscription “Labels ABOVE the”, other margins large, crease in margin as usual, Very Fine and choice, ex Baillie, SG £1,350..... E. 500-750
- 3010°P **1852, 1p Red Brown, Imprimatur (SG Specialised B2 var; SG 8 var; Scott 3 var).** Plate 188, lettered A-F, sheet margin at top with part inscription “(A)ddress and towa(rds)”, other margins large, crease in margin as usual, Very Fine and choice, ex Fisher, “Tes” and Baillie, SG £1,350 E. 500-750
- 3011°P **1852, 1p Red Brown, Imprimatur (SG Specialised B2 var; SG 8 var; Scott 3 var).** Plate 202, lettered A-H, sheet margin at top with part inscription “(H)AND SIDE of the”, other margins large, crease in margin as usual, Very Fine and choice, ex “Tes” and Baillie, SG £1,350 E. 500-750

- 3012°★田 **1855, 1p Red Brown on Blued Paper (SG Specialised C2(1); SG 22; Scott 11).** Block of four with part imprint “Letters. In Wetting the Back be ca(reful)” selvage at top, die 1, alphabet II, lettered A-I to B-J, original gum, bold color, minor adhesion on gum in top selvage, Fine-Very Fine, a rare multiple, ex Baillie, SG £5,000..... E. 1,500-2,000



3012

1865 ONE-PENNY RED BROWN, IMPERFORATE
EXPERIMENTAL NEALE'S STEAM PRESS
ORNAMENT AND INSCRIPTION BLOCK OF EIGHTEEN



3013

3013° ★ 1855, 1p Red Brown, Imperforate from the Experimental Neale's Steam Press (SG Specialised C8(1)h; SG 29a; Scott 16c). Block of eighteen with sheet margin at right, Plate 22, lettered H-J to M-L, without gum as issued, margin with complete ornament and inscription "Per Sheet. Place the Labels ABOVE the Address and towards the RIGHT HAND SIDE of the Letter. In Wetting the", other margins large to full, wonderfully rich color, some light creasing mostly between rows including slight hinge reinforcement by ornament

EXTREMELY FINE APPEARANCE. A MAGNIFICENT SHOWPIECE MULTIPLE OF THE IMPERFORATE ONE-PENNY FROM PLATE 22, USING THE EXPERIMENTAL NEALE'S STEAM PRESS. ONE OF THE LARGEST KNOWN BLOCKS FROM THE ONE SHEET DISCOVERED.

Reports show that Plate 22 was put to press on Aug. 1, 1855, using the experimental Neale's Steam Press. The same occurred for Plate 25 at a slightly later date. The Neale's Press was a revolutionary machine that automated plate inking, wiping, polishing and paper feeding at a greater speed than before.

It is believed that one sheet each from both Plate 22 and 25 were discovered around 1960 and ultimately cut up to feed collector demand. It is presumed that the remaining 2,000 sheets printed from Plate 22 using this process were destroyed.

Ex Baillie. With 1993 Holcombe certificate. SG as singles with no premium for the position block £72,000..... E. 30,000-40,000



1849 2-PENCE PALE BLUE
A SPECTACULAR BLOCK OF 36

3014° ★田 **1849, 2p Pale Blue (SG Specialised ES13; SG 13; Scott 4a).** Block of 36, Plate 4, lettered L-D to O-L, original gum, couple h.r.'s, mostly large margins to touching in a few places at left and right, bright color, few creases and small faults such as light thin, small scissor cut at bottom and some gum staining, which should be expected on an early multiple of this size

FINE-VERY FINE. A SPECTACULAR LARGE MULTIPLE OF THE 1849 2-PENCE PALE BLUE FROM PLATE 4. THIS IS BELIEVED TO BE THE LARGEST UNUSED MULTIPLE IN PRIVATE HANDS.

Blocks of this issue in any size are rare, as evidenced by the large difference in the SG Specialised catalogue value for a block versus four singles. A review of major Great Britain collections containing early Line-Engraved multiples located blocks of four, six or even nine, but nothing of the magnitude of this block for any of the plates used for the White Lines Added issue.

Ex Adams, Griffiths and Baillie. SG as eight blocks of four and two pairs of the cheapest shade (Blue) is £436,000..... E. 75,000-100,000



- 3015°★ **1841, 2p Blue (SG Specialised ES14; SG 14; Scott 4).**
 Plate 4, lettered R-L, original gum, lightly hinged, full
 margins all around, intense shade and impression
 EXTREMELY FINE ORIGINAL-GUM EXAMPLE OF THE
 1841 2-PENCE FROM PLATE 4.
 Ex Baillie. With 1983 B.P.A. certificate. SG £6,250.
 Scott \$4,500.00 E. 1,500-2,000



3015

1855 2-PENCE BLUE, PLATE 5
 THE LARGEST RECORDED MULTIPLE IN EXISTENCE
 AN IMPORTANT PIECE FOR THE LINE-ENGRAVED COLLECTOR

- 3016°★田 **1855, 2p Blue (SG Specialised F6(1); SG 34; Scott 17).** Block of 30 with selvage at right
 and inscription "*to remove the Cement.*", Plate 5, lettered O-G to S-L, original gum, most
 stamps appear **Mint N.H.** with the exception of a couple h.r.'s at top, particularly fresh
 color on bright paper, the block also contains three constant varieties, P-K with "Double
 letter" [SG Spec. F6(1)e], P-J with dented frame above "P" [SG Spec. F6(1)f] and R-G and
 S-G showing colored roller flaw on "W" of "TWO" [listed as a footnote below F6(1)], small
 perf flaw on position S-G and couple minute toned spots
 VERY FINE AND STUNNING MULTIPLE OF THE 2-PENCE PERFORATED 14 FROM PLATE 5.
 THIS IS THE LARGEST RECORDED MULTIPLE OF THE ISSUE AND AN IMPORTANT PIECE
 FOR ANY LINE-ENGRAVED COLLECTOR OR EXHIBITOR.
 Ex Fraser and Baillie. With 1983 B.P.A. certificate (not noting any faults). SG as six
 hinged blocks of four and six hinged singles £111,000, which only hints at the spectacu-
 larly rare nature of this multiple. E. 50,000-60,000

Great Britain

1858/64

Plate numbers of the ONE PENNY red

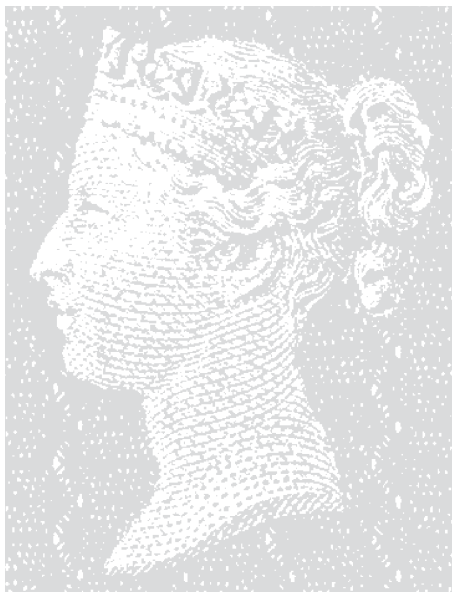


1864 ONE-PENNY ROSE RED, LETTERS IN ALL FOUR CORNERS
THE REMARKABLE ASSEMBLAGE OF 119 DIFFERENT IMPRIMATURS

3017°P **1864, 1p Rose Red and Lake Red, Imprimatur (SG Specialised G1 Imprimatur; SG 43P-44P; Scott 33P).** 119 different plate numbers of the 150 that exist as imprimatur, neatly mounted on hingeless album pages, each with sheet margin at either left or right (lettered B-A or B-L), nearly all with large to ample margins on other sides, some with light pencil notations in margin, incredibly fresh color overall

EXTREMELY FINE. AN ABSOLUTELY REMARKABLE ASSEMBLAGE OF IMPRIMATURS OF THE 1864 ONE-PENNY RED. THIS COLLECTION ACCOUNTS FOR NEARLY 80% OF THE PLATE POSITIONS — EACH AS A GEM SINGLE WITH SHEET-MARGIN. WITHOUT QUESTION THIS COLLECTION WOULD BE NEARLY IMPOSSIBLE TO REPLICATE.

Imprimatur from Plates 71-225 are known with the exception of 75, 77, 126, 128 and 158. Ex Gross. SG £50,575.(Photo Ex/Website PDF) E. 30,000-40,000





3018

3018° ★ 1864, 1p Lake Red (SG Specialised G1(2); SG 44; Scott 33b). Top right plate no. 146 corner selvage block of six, lettered A-J to B-L, with part inscription "*the Back be careful not to remove the Cement.*" along top, original gum, lightly hinged (couple stamps possibly Mint N.H.), bold color, gum creasing mostly in selvage, Very Fine and collectible plate block, ex Baillie..

..... E. 400-500



3019

3019° ★ 1864, 1p Lake Red, Imperforate on Dr. Perkins Blued Paper (SG Specialised G1(2)i; SG 44a; Scott 33c var). Block of four, Plate 121, lettered Q-E to R-F, original gum, top pair lightly hinged, bottom pair **Mint N.H.**, large to ample margins all around, wonderful depth of color with sharp impression, light gum creases

FINE-VERY FINE. AN IMPRESSIVE MULTIPLE OF THE IMPERFORATE ONE-PENNY FROM PLATE 121 ON DR. PERKINS BLUED PAPER.

This trial paper supplied by Dr. Perkins was chemically treated, causing the slightly blued hue, in order to prevent the removal of cancels. A few sheets were used to print the 1p Lake Red from Plate 121, 2p Blue from Plates 9 and 13 and the 1½p Lake Red from Plate 1. Multiples of any size are seldom encountered.

Ex Baillie. With 1983 R.P.S. certificate. SG as singles £26,000. E. 7,500-10,000

1858 2-PENCE BLUE, PLATE 9
A SHOWPIECE PLATE NUMBER MULTIPLE



3020

3020° ★田 1858, 2p Blue (SG Specialised G2; SG 45; Scott 29). Top left plate no. 9 corner selvage block of 24, watermark Ty. II, lettered A-A to D-F, with part inscription "PRICE 2d. Per Label. 2/- Per Row of 12. £1... Per Sheet. Place the Labels ABOVE the Address and towa(rds)" along top, most stamps appear **Mint N.H.** with the exception of three stamps at bottom lightly hinged, position D-C with small thin, some minor gum bends mostly in selvage

VERY FINE. AN EXCEPTIONAL SHOWPIECE BLOCK OF 24 OF THE 2-PENCE FROM PLATE 9. RARELY ENCOUNTERED IN A MULTIPLE OF THIS SIZE.

It is interesting to note the selvage inscription of this block for a price of the sheet versus the 1p stamp. The traditional form of currency was 12p per shilling and 20sh per pound, making 240 pence per pound. Sheet inscriptions on the 1p state a sheet cost £1 which is 240 stamps. On the 2p, which is shown here, a sheet costs £1 as well, which is 120 stamps. Therefore, the sheets were printed in the 240 stamp format and cut into two panes prior to having been sold at the post office.

Ex Baillie. E. 7,500-10,000

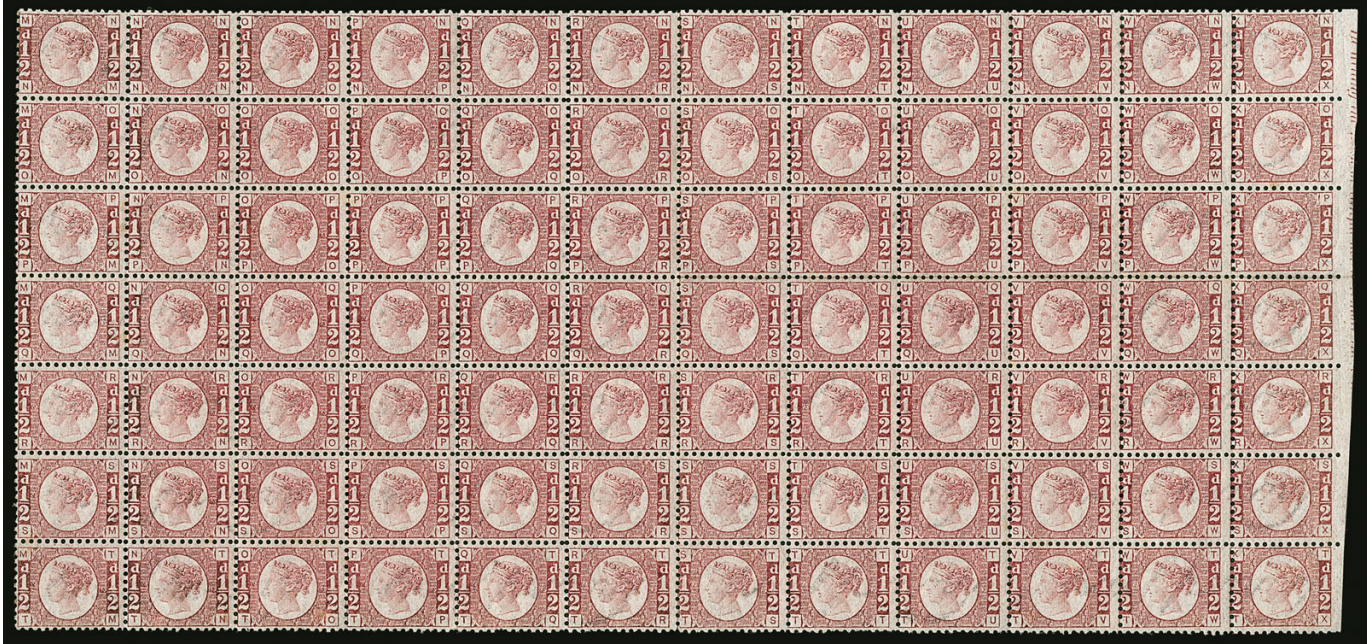


3021

3021° ★田 **1869, 2p Deep Blue (SG Specialised G3(2); SG 47; Scott 30).** Bottom right plate no. 15 corner selva block of fifteen with current no. 227, lettered R-H to T-L, with part inscription "(H)AND SIDE of the Letter. In Wetting the Back be careful not to remove the Cement." along bottom, original gum, top row with a couple h.r.'s, bottom two rows appear **Mint N.H.**, deep rich color

VERY FINE AND HANDSOME PLATE NUMBER BLOCK OF THE 2-PENCE DEEP BLUE FROM PLATE 15. A VISUALLY STRIKING LINE-ENGRAVED MULTIPLE.

Ex Baillie..... E. 5,000-7,500



3022

3022° ★田 1870, ½p Rose, Imperforate One Side (With Selvage) (SG Specialised G4(2)g; SG 48; Scott 58). Block of 84, lettered N-M to T-X, imperforate between right vertical column and sheet margin which also contains part of the inscription, **Mint N.H.** with the exception of some paper adhesion on O-X and h.r. on T-X, remarkably fresh color

VERY FINE. A RARE LARGE-SIZED MULTIPLE OF THE HALF-PENNY ROSE, ADDITIONALLY WITH THE IMPERFORATE BETWEEN STAMP AND MARGIN AT RIGHT, IN A PERFECT STATE OF PRESERVATION.

Ex Baillie. With 1982 B.P.A. certificate..... E. 5,000-7,500

1860 1½ PENNY ROSY MAUVE ON BLUED PAPER
PREPARED FOR USE BUT NOT ISSUED
THE LARGEST RECORDED MULTIPLE



3023

3023° ★田 **1860, 1½p Rosy Mauve on Blued Paper, Prepared for Use but Unissued (SG Specialised G5; SG 53a; Scott 31).** Block of six, lettered L-G to M-I, original gum, two h.r., three lightly hinged and bottom left stamp **Mint N.H.**, phenomenal depth of color on fresh paper

VERY FINE BLOCK OF THE UNISSUED 1860 1½-PENNY ROSY MAUVE. AN IMMENSE RARITY OF THE LINE-ENGRAVED PERIOD AND THE LARGEST KNOWN MULTIPLE IN PRIVATE HANDS.

This stamp was printed and prepared for use in 1860 in anticipation of a change in postal rates. Changes did not come to fruition, but some 10,000 sheets were already printed. Most of the supply was destroyed and it is unknown how or why unused examples managed to get out with three or four even postally used. Postal changes did occur about a decade later in 1870, whereby SG Nos. 51/52 were issued using the same plates.

A block of six is the largest recorded multiple known in private hands. We are aware of only two other blocks of six - D-J to E-L (ex Beresford) and R-F to S-H. It goes without saying that multiples of any size are extraordinarily rare.

Ex Adams and Baillie. With 2005 B.P.A. certificate. Catalogued simply as hinged singles. SG £51,000. Scott \$52,500.00..... E. 30,000-40,000

1870 1½ PENNY ROSE RED
OP-PC FOR CP-PC ERROR OF LETTERING
THE MOST RECOGNIZABLE ERROR OF THE LINE-ENGRAVED ISSUES



3024

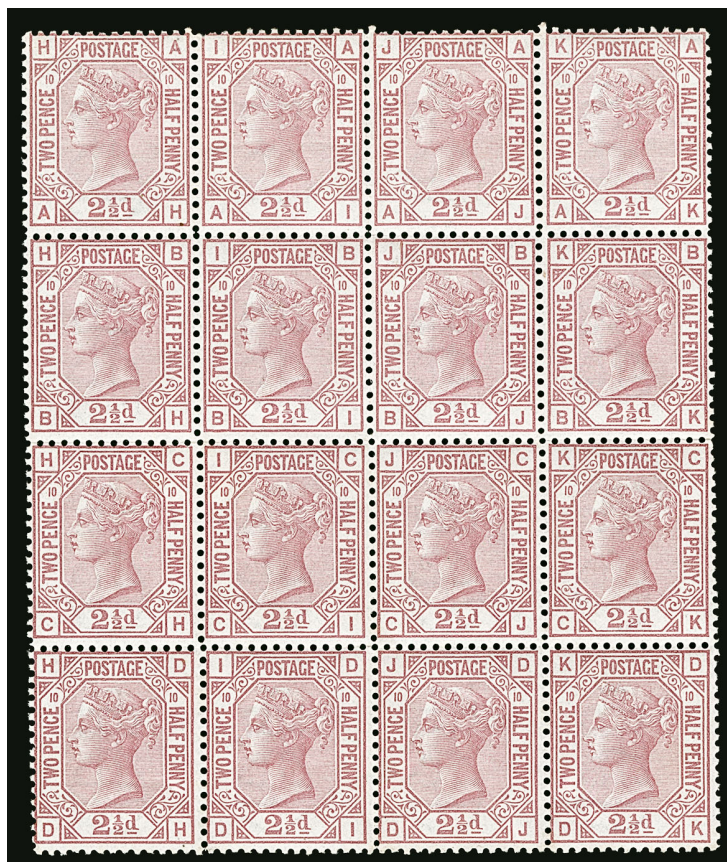
3024° ★ **1870, 1½p Rose Red, Error of Lettering OP-PC for CP-PC (SG Specialised G6(1)c; SG 53; Scott 32d).** Plate 1, original gum, lightly hinged, deep rich shade, typical centering for this issue, barely perceptible trace of toning at top center

FINE AND IMMENSELY RARE UNUSED EXAMPLE OF THE OP-PC FOR CP-PC ERROR OF LETTERING. ONE OF THE SMALL HANDFUL OF ORIGINAL-GUM EXAMPLES IN EXISTENCE.

This is the most significant and visually constant error of Great Britain Queen Victoria stamps. This error occurred on all printings from Plate 1. Remarkably, the error went unnoticed during the four years of printing runs. In 1894 it was mentioned in an American journal, 24 years after release.

Ex Seymour and Baillie. With 1989 R.P.S. certificate. SG £30,000. Listed but unpriced in Scott. E. 10,000-15,000

1855-83 SURFACE PRINTED ISSUES



3025

3025°★★田 1878, 2½p Rosy Mauve (SG Specialised J11; SG 141; Scott 67). Block of sixteen, **Mint N.H.**, Plate 10, lettered A-H to D-K, lovely shade on bright paper, couple minor gum wrinkles as to be expected

VERY FINE BLOCK OF THE 2½-PENCE ROSE MAUVE FROM PLATE 10 — INFREQUENTLY FOUND IN MULTIPLES OF THIS SIZE.

Multiples of any size are quite scarce. In order to feed collector demand, most large pieces such as this have been broken down into blocks of four. Ex Baillie. SG as four blocks of four £14,000. E. 7,500-10,000



3026

3026° ★田 **1880, 2½p Rosy Mauve (SG Specialised J18; SG 141; Scott 67).** Block of four, Plate 17, lettered F-E to G-F, original gum, top pair lightly hinged, bottom pair **Mint N.H.**, bottom right stamp with light pencil marking on gum

FINE AND RARE BLOCK OF THE 2½-PENCE ROSY MAUVE FROM THE SCARCE PLATE 17. PARTICULARLY RARE AS A MULTIPLE.

Only 5,000 sheets were printed from Plate 17 in Rosy Mauve. As a comparison to rarity, about 30,000 sheets were printed of the 2½p Blue (SG 142) from Plate 17 just months after the Rosy Mauve.

Ex Baillie. SG £9,500 E. 4,000-5,000



3027

3027°★★田 1880, 2½p Blue (SG Specialised J22; SG 142; Scott 68). Block of four, **Mint N.H.**, Plate 20, lettered J-E to K-F, well-centered, strong color on fresh paper, Very Fine and choice, a superb block in all regards, ex Baillie, SG as hinged £3,000 E. 1,500-2,000

3028°S 1861, 3p Rose, "Specimen" Overprint (SG Specialised J25As; SG 91 Footnote; Scott 37S var). Plate 2, lettered H-E, "Specimen" Ty. 2, wing margin at left, original gum, lightly hinged, fresh color, Very Fine, a scarce "Specimen" and affordable alternative to the unissued stamp which catalogues £20,000, SG £800 ... E. 300-400



3028



3029

3029°★ 1862, 3p Deep Carmine Rose (SG Specialised J26(1); SG 75; Scott 37a). Plate 2, lettered A-A, original gum, h.r., deep rich shade, Fine, scarce original-gum example, ex Gross, SG £4,800, Scott \$5,000.00 E. 1,000-1,500



3030

3030° ★田 **1871, 3p Rose (SG Specialised J31; SG 103; Scott 49).** Interpanneau gutter selva block of sixteen with wing margin at right, Plate 6, lettered M-A to P-D, original gum, lightly hinged, central block **Mint N.H.**, gutter inscription reads "*PRICE. 3 Pence per Label. 1 Shilling per Row of 4. 10 Shillings per Sheet of 40.*", horizontal bend thru selva and couple other light bends

VERY FINE. AN IMPORTANT AND RARE POSITION PIECE OF THE 3-PENCE ROSE FROM PLATE 6 WITH INTERPANNEAU GUTTER SELVA. RARELY ENCOUNTERED IN THIS FORMAT.

Ex Baillie. SG value as four blocks of four with no premium for the interpanneau gutter £13,600..... E. 7,500-10,000



3031

3031° ★田 1871, 3p Rose (SG Specialised J32; SG 103; Scott 49). Top left corner selvage current no. 328 partial pane of nineteen with wing margin at right, Plate 7, lettered A-A to E-C, original gum, four stamps lightly hinged, others appear **Mint N.H.**, deep rich shade, trace of a few light gum bends (mainly in selvage) and folded along perfs twice, position E-C with minor corner crease and small manuscript marking in top selvage, position E-D and interpanneau selvage at bottom missing for complete pane

VERY FINE. AN IMPRESSIVE CURRENT NUMBER MULTIPLE OF THE 3-PENCE ROSE FROM PLATE 7. A RARE SURFACE PRINTED BLOCK IN THIS SIZE.

Ex Baillie. SG simply as four blocks of four and three singles £16,350. .. E. 7,500-10,000



3032

3032° ★田 **1871, 3p Rose (SG Specialised J35; SG 103; Scott 49).** Block of sixteen with interpaneau gutter selvage at bottom and wing margin at left, Plate 10, lettered B-I to E-L, original gum, top central pair lightly hinged, rest are **Mint N.H.**, gutter inscription reads "PRICE. 3 Pence per Label. 1 Shilling per Row of 4. 10 Shillings per Sheet of 40.", fresh color, small toned spot in bottom selvage of little consequence

VERY FINE. A STRIKING POSITION BLOCK OF THE 3-PENCE ROSE FROM THE SCARCER PLATE 10. SELDOM ENCOUNTERED IN A MULTIPLE OF THIS SIZE.

Ex Baillie. SG as four blocks of four £22,000. E. 10,000-15,000



3033

3033°★★田 1875, 3p Rose (SG Specialised J41; SG 144; Scott 61). Block of four with interpanneau gutter selvage at top and wing margin at right, **Mint N.H.**, Plate 17, lettered F-C to G-D, part inscription "*1 Shilling per Row of 4. 10 Shillings per Sheet of 40.*", excellent color on pristine paper

VERY FINE. A HANDSOME NEVER-HINGED INTERPANEAU GUTTER BLOCK OF THE 3-PENCE ROSE FROM PLATE 17.

Ex Baillie. With 1997 B.P.A. certificate as a block of eight from which this came. SG as hinged with no premium for interpanneau gutter selvage £3,000. E. 2,000-3,000



3034

3034°★★田 1875, 3p Rose (SG Specialised J42; SG 144; Scott 61). Bottom right corner selvage block of six with "*3 Pence, 1 Shilling, 10 Shillings*" inscription at bottom, Plate 18, lettered N-J to O-L, original gum, lightly hinged (two small hinge slivers sensibly reinforcing perfs at center), pretty shade, some minor gum bends mostly in selvage and small thin in left selvage (none of which is mentioned on accompanying certificate)

FINE-VERY FINE BLOCK OF SIX OF THE 3-PENCE ROSE FROM PLATE 18.

Ex Baillie. With 1979 R.P.S. certificate. SG as block of four and two singles £4,000. E. 2,000-3,000

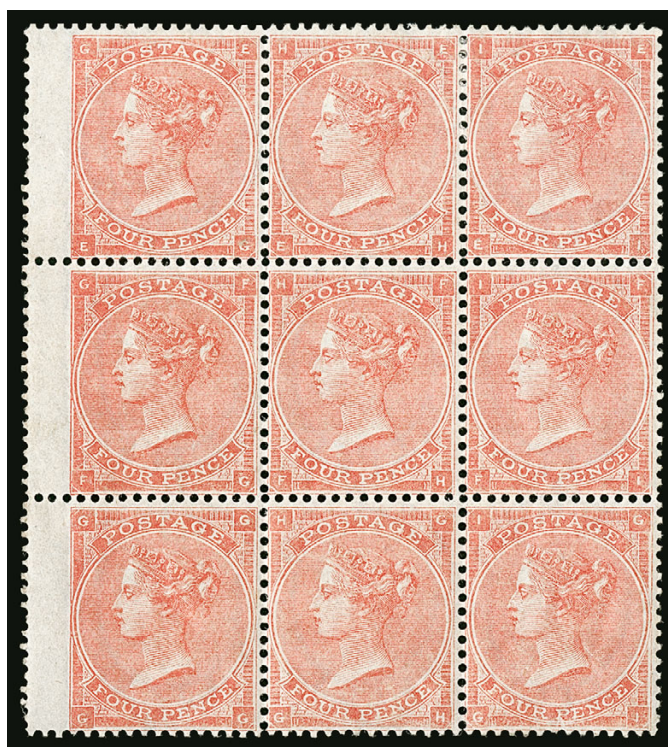
3035° ★田 1857, 4p Rose (SG Specialised J51(2); SG 66a; Scott 26). Block of four, original gum, lovely pastel shade on bright paper, light vertical crease thru right pair

FINE ORIGINAL-GUM BLOCK OF THE 4-PENCE ROSE ON WHITE PAPER. PARTICULARLY RARE IN A MULTIPLE.

Ex Latto and Baillie. SG £12,000. . E. 3,000-4,000



3035



3036

3036° ★田 1863, 4p Pale Red (SG Specialised J53(2); SG 82; Scott 34b). Block of nine with wing margin at left, Plate 4 (with hair lines added), lettered E-G to G-I, original gum, couple h.r.'s at top, central row **Mint N.H.**, particularly well-centered, bold and bright color, single thinned perf at top and some minor offset at bottom

VERY FINE AND EYE-APPEALING LARGE MULTIPLE OF THE 4-PENCE IN THE PALE RED SHADE FROM PLATE 4. A SURFACE PRINTED RARITY IN A MULTIPLE OF THIS SIZE.

Ex Baillie. SG as block and five singles £20,500. E. 7,500-10,000



3037

3037°★ **1863, 4p Pale Red, Imperforate (SG Specialised J53(2)d; SG 82a; Scott 34d).** Horizontal pair with sheet margin at top, other margins ample, Plate 4 (with hair lines added), lettered AI-AJ, original gum, lightly hinged, pretty color, couple horizontal creases in top margin

VERY FINE AND SELDOM ENCOUNTERED IMPERFORATE PAIR OF THE 1863 4-PENCE PALE RED FROM PLATE 4.

Imprimaturs from this plate can be distinguished by either the lettering and/or the color shade. Since some of the lettering overlaps, as is the case with this example, the shade is the key indicator of identification. Imprimaturs are in a much deeper shade of Red.

Ex Baillie. SG as singles £7,400. E. 3,000-4,000



3038

3038°★★田 **1877, 4p Sage Green (SG Specialised J64; SG 153; Scott 70).** Block of six, **Mint N.H.**, Plate 15, lettered D-A to E-C, wonderfully fresh color on bright paper

FINE. A RARE MULTIPLE OF THE 4-PENCE IN SAGE GREEN FROM PLATE 15, ESPECIALLY SO IN SUCH PRISTINE CONDITION.

Plate 15 was originally used to print the 4p Vermilion beginning in 1875 before the change of color the following year. Due to the shorter span of life in printing the Sage Green, Plate 15 is slightly rarer than Plate 16.

Ex Baillie. With 1989 B.P.A. certificate. SG as hinged block and two singles £10,800.....
..... E. 5,000-7,500



3039



3040

- 3039° ★ **1880, 4p Grey Brown (SG Specialised J69; SG 160; Scott 84).** Plate 18, lettered B-K to B-L, horizontal pair, original gum, lightly hinged, bold color and crisp impression, Fine and scarce pair, catalogued as singles, SG £900, Scott \$880.00 E. 300-400
- 3040° ★ **1862, 6p Deep Lilac (SG Specialised J71(1); SG 83; Scott 39h).** Plate 3, lettered O-G, original gum, gorgeous rich color on bright paper, well-centered, Very Fine, ex Gross, with 1985 B.P.A. certificate, SG £2,800, Scott \$2,600.00 E. 1,000-1,500



3041

- 3041° ★田 **1867, 6p Lilac (SG Specialised J75(1); SG 104; Scott 50).** Block of four with interpaneau gutter selvage with "PRICE. 6 Pence per Label" inscription at bottom and wing margin at left, Plate 6, lettered N-E to O-F, slightly crackly original gum, minor hinge sliver between top pair reinforcing perfs, fresh color, horizontal crease thru gutter selvage

FINE POSITIONAL BLOCK OF THE 6-PENCE LILAC FROM PLATE 6, ESPECIALLY RARE AS A MULTIPLE OF ANY SIZE.

The rarity of a block is shown by the over 50% premium in catalogue value in the SG Specialised (four singles catalogue £7,200). Ex Harrison-Cripps and Baillie. With 1970 R.P.S. certificate mistakenly identifying this block as SG 97. SG £11,000. ... E. 4,000-5,000



- 3042°★ **1870, 6p Mauve (SG Specialised J77; SG 109; Scott 51).** Plate 9, lettered G-G, original gum, barely hinged, gorgeous rich color, fresh and Fine, with 1990 B.P.A. certificate, SG £700, Scott \$650.00..... E. 300-400



3043

- 3043°★田 **1870, 6p Mauve (SG Specialised J77; SG 109; Scott 51).** Block of six with wing margin at right, Plate 9, lettered S-B to T-D, original gum, center vertical pair lightly hinged, others **Mint N.H.**, excellent centering, deep rich shade

VERY FINE AND ATTRACTIVE MULTIPLE OF THE 6-PENCE MAUVE FROM PLATE 9.

At a quick glance, there are a few spots on the reverse that appear thinned. The watermark was heavily impressed causing this appearance.

Ex Baillie. SG as block and two singles £5,150. E. 2,000-3,000

1870 6-PENCE MAUVE, PLATE 9
THE ONLY COMPLETE PANE IN EXISTENCE



3044

3044°★★田 1870, 6p Mauve (SG Specialised J77; SG 109; Scott 51). Complete pane of 20 with full current no. 329 selvage and wing margin at left, Plate 9, lettered P-I to T-L, stamps **Mint N.H.** though a few sensible hinge reinforcements in selvage, inscription "PRICE. 6 Pence per Label. 2 Shillings per Row of 4. 1 Pound per Sheet of 40." at top, well-centered, rich color, horizontal crease in top selvage and thru first row, couple other folds along perfs, couple inconsequential selvage faults and slightly ragged wing margin perfs

A FINE AND TRULY REMARKABLE COMPLETE PANE OF 20 OF THE 6-PENCE MAUVE FROM PLATE 9. A PHENOMENAL SHOWPIECE AS A COMPLETE PANE AND BELIEVED TO BE THE ONLY EXAMPLE IN EXISTENCE.

Ex Latto and Baillie. SG as four blocks and four singles £17,900 is hardly any reflection on the rarity of the pane but just highlights the scarcity of blocks alone..... E. 10,000-15,000



3045

- 3045° ★ 1873, 6p Grey (SG Specialised J81; SG 125; Scott 60). Plate 12, lettered N-L, original gum, lovely rich color on bright paper, Fine and quite scarce in sound condition with original gum, ex Gross, SG £1,900, Scott \$1,900.00 E. 500-750



3046

- 3046° ★田 1874, 6p Grey (SG Specialised J83; SG 147; Scott 62). Block of four with part imprint "(S)IX PENCE." at bottom and wing margin at left, Plate 13, lettered I-E to J-F, original gum, top pair lightly hinged, bottom pair **Mint N.H.**, well-centered, intense shade and sharp impression, couple shorter perfs in selva, Very Fine, ex Latto and Baillie, SG £2,750..... E. 1,000-1,500



3047

3047° ★田 1878, 6p Grey (SG Specialised J86; SG 147; Scott 62). Complete pane of 20 with full selvage inscription at top "Price: 6 Pence per Label, 2 Shillings per Row of 4, 1 Pound per Sheet of 40", partial plate no. 16 at bottom and red Crowned "Postage 6p" handstamp at left, wing margin at right, lettered P-A to T-D, original gum, few stamps lightly hinged but majority are **Mint N.H.**, couple of gum bends and creases most prominent in top selvage, bold color

FINE-VERY FINE. A TRULY REMARKABLE COMPLETE PANE OF 20 OF THE 6-PENCE FROM PLATE 16. A SURFACE PRINTED RARITY AND UNLIKELY MANY COMPLETE PANES STILL EXIST.

Ex Latto and Baillie. SG as four blocks of four and singles £14,000 E. 7,500-10,000



3048

3048°★田 **1878, 6p Grey (SG Specialised J86; SG 147; Scott 62).** Complete pane of 20 with selvage inscription at top "POSTAGE SIX PENCE.", wing margins at right, Plate 16, lettered K-A to O-D, original gum, couple h.r. sensibly reinforcing perfs though most are **Mint N.H.**, couple mild bends, creases along perfs and slightly split between first and second column

FINE EXAMPLE OF ANOTHER COMPLETE PANE OF 20 OF THE 6-PENCE FROM PLATE 16. A RARE SURFACE PRINTED PANE, SELDOM OFFERED.

Despite the fact that the Bertsimas collection contains two panes, these multiples are by no measure common. It is unlikely that more than a couple others still exist.

Ex Latto and Baillie. SG as four blocks of four and singles £14,000. E. 7,500-10,000

1876 8-PENCE PURPLE BROWN, UNISSUED
A SPECTACULAR MINT NEVER-HINGED BLOCK OF FOUR



3049

3049°★★田 1876, 8p Purple Brown, Unissued (SG Specialised J91; SG 156a; Scott 72). Block of four, **Mint N.H.**, Plate 1, lettered E-C to F-D, rich color with a razor-sharp impression, light vertical gum crease thru left pair

FINE AND SPECTACULAR BLOCK OF THE UNISSUED 8-PENCE IN PURPLE BROWN. THIS IS ONE OF THE LARGEST RECORDED MULTIPLES IN EXISTENCE.

The 8p was originally issued to prepay the then-rate of postage to India via Marseilles and Australia via Brindisi. Despite the need for the value immediately, the printing was cancelled and issue postponed after 10,000 sheets were printed. The Purple Brown resembled the Rosy Mauve of the 2½p too closely. All of the sheets were supposed to have been destroyed. All known examples can be traced from their centering to the top left quarter of one sheet. Therefore, it is believed that no more than 60 exist in total. We are aware of only one larger multiple known, a bottom left corner selvage block of six (I-A to J-C) and one other that shares this size.

Ex Latto and Baillie. With 2005 B.P.A. certificate. SG as hinged £50,000.
..... E. 20,000-30,000



3050

3050° ★田 **1876, 8p Orange (SG Specialised J91A; SG 156; Scott 73).** Block of four, Plate 1, lettered F-C to G-D, original gum, top pair lightly hinged, bottom pair **Mint N.H.**, excellent centering, wonderfully vibrant color on bright paper

VERY FINE AND EXCEPTIONALLY FRESH UNUSED BLOCK OF THE 8-PENCE ORANGE. RARE IN THIS PRISTINE CONDITION.

Ex Baillie. With 1983 B.P.A. certificate. SG £9,750. E. 5,000-7,500



1862 9-PENCE BISTRE, PLATE 2
 CORNER INSCRIPTION SELVAGE BLOCK OF SIX
 QUITE LIKELY THE FINEST MULTIPLE IN EXISTENCE



3051

3051° ★田 **1862, 9p Bistre (SG Specialised J92(1); SG 86; Scott 40d).** Bottom left corner block of six with part inscription “*PRICE. Ninepence per Label, 3 Shillings per Row of 4*” inscription at bottom and wing margin at left, Plate 2, lettered D-I to E-K, original gum, lightly hinged, intense shade on fresh paper, couple light creases affecting outer vertical pairs and selvage

VERY FINE APPEARING MULTIPLE OF THIS RARE 9-PENCE BISTRE STAMP, EXPONENTIALLY SO AS AN UNUSED POSITION BLOCK OF SIX. AN IMPRESSIVE SURFACE-PRINTED RARITY AND STATED TO BE THE FINEST MULTIPLE IN EXISTENCE.

Ex “Maximus” and Baillie. With 1984 B.P.A. certificate. SG as block of Straw shade (the Straw single is valued at £3,750 versus the Bistre at £5,250) and two singles £32,500. E. 15,000-20,000



3052

- 3052°★ **1862, 1sh Deep Green (SG Specialised J101(1); SG 89; Scott 42a).** Plate 2 (showing Plate 1), lettered D-L, original gum, lightly hinged, strong color, Fine and scarce in sound original-gum condition, ex Gross, signed Bolaffi and A. Diena, SG £4,800, Scott \$4,750.00 .. E. 750-1,000



3053

- 3053°★田 **1867, 1sh Green (SG Specialised J104(2); SG 117; Scott 54).** Bottom left corner selva block of six with "PRICE. One Shilling per Label, 4 Shillings per Row of 4" inscription at bottom, Plate 4, lettered N-A to O-C, slightly crackily original gum, few stamps appear **Mint N.H.**, bold color, light gum bends and small tear in selva at left

FINE. A SCARCE AND ATTRACTIVE MULTIPLE OF THE ONE-SHILLING FROM PLATE 4.

Ex Baillie. SG as block and two singles £7,950. E. 3,000-4,000

1871 ONE-SHILLING DEEP GREEN, PLATE 5
AN IMPRESSIVE COMPLETE PANE OF 20



3054

3054°★田 **1871, 1sh Deep Green (SG Specialised J105(1); SG 115; Scott 54a).** Complete pane of 20 with full selvage at top with "POSTAGE ONE SHILLING" inscription, left and bottom with "PRICE. One Shilling per Label, 4 Shillings per Row of 4, One Pound per Sheet of 20" inscription at bottom, wing margin at right, Plate 5, lettered K-A to O-D, original gum, few stamps lightly hinged, mostly **Mint N.H.**, excellent depth of color, crease thru second row, minute thin on O-D and small perf separation between first and second row at right

A VERY FINE AND SPECTACULAR COMPLETE PANE OF THE ONE-SHILLING IN THE SCARCE DEEP GREEN SHADE FROM PLATE 5. A SHOWPIECE COMPLETE PANE WHICH WE BELIEVE NO MORE THAN A FEW EXIST FROM ANY PLATE.

Ex Latto and Baillie. SG as four blocks (in the cheaper Green shade whereby singles are valued £200 cheaper) and four singles £24,000..... E. 15,000-20,000



3055

3055° ★田 **1876, 1sh Green (SG Specialised J113; SG 150; Scott 64).** Bottom right corner selva block of nine with part inscription “*1 Shilling per Label, 4 Shillings per Row of 4, 1 Pound per Sheet of 20*” at bottom and wing margin at right, Plate 13, lettered R-B to T-D, original gum, three stamps lightly hinged, others **Mint N.H.**, bright color on fresh paper, small toned spot in selva

FINE-VERY FINE AND HANDSOME BLOCK OF NINE OF THE ONE-SHILLING FROM PLATE 13. A RARE MULTIPLE OF THIS HIGH VALUE FROM THE SURFACE-PRINTED ISSUES.

Ex Baillie. SG as block of four and singles (which insufficiently reflects the rarity of a block of this size) is £6,875 E. 4,000-5,000



3056

3056° ★田 **1881, 1sh Orange Brown (SG Specialised J117; SG 163; Scott 87).** Block of 20, Plate 14, lettered A-A to E-D, original gum, few h.r.'s though ten stamps appear **Mint N.H.**, warm shade, pulled perf at top affecting A-A and A-B, E-A with small thin spot

A VERY FINE AND EXTRAORDINARILY LARGE MULTIPLE OF THE ONE-SHILLING ORANGE BROWN FROM PLATE 14. THIS IS THOUGHT TO BE THE LARGEST MULTIPLE KNOWN IN PRIVATE HANDS.

This block is equal to £1 of unused postage, a hefty sum at the time. When adjusting for inflation and purchasing power, this represents about £100 of unused postage left by the wayside. As evidenced by the increase in catalogue value between four singles and a block of four in SG Specialised — £2,700 as singles and £4,000 as a block — one can only imagine what the premium is for a multiple of this magnitude. There is one other block of 20 (ex Phillips) that has since been institutionalized.

Ex Latto and Baillie. SG as four blocks and four singles £18,700. E. 7,500-10,000

1867 2-SHILLING DULL BLUE, PLATE 1
AN IMMENSELY RARE BLOCK WITH PART INSCRIPTION



3057

3057° ★田 **1867, 2sh Dull Blue (SG Specialised J118(1); SG 118; Scott 55).** Block of four with part inscription "*POSTAGE TW(O)*" at bottom and wing margin at left, Plate 1, lettered S-E to T-F, original gum, fresh pastel shade with a sharp impression, light traces of a couple gum wrinkles

FINE AND IMMENSELY RARE UNUSED BLOCK OF THE 2-SHILLING DULL BLUE, PLATE 1. AN UNDER-APPRECIATED RARITY AS A MULTIPLE AND MISSING FROM EVEN THE MOST ADVANCED COLLECTIONS.

After an exhaustive review of numerous name auction sales in which singles and even used blocks show up with frequency, unused blocks (or even pairs) of this issue are rarely encountered. We are aware of only one larger multiple, a corner selvage block of six (ex Latto), although the block offered here is in arguably better condition and nicer appearance.

Ex Baillie. SG £20,000..... E. 10,000-15,000

1867 2-SHILLING MILKY BLUE, PLATE 1
BELIEVED TO BE THE ONLY UNUSED MULTIPLE EXTANT



3058

3058° ★ **1867, 2sh Milky Blue (SG Specialised J118(5); SG 120b; Scott 55d).** Horizontal pair, Plate 1, lettered D-B to D-C, original gum, lightly hinged, gorgeous color in this distinctive shade, right stamp with light bend

FINE HORIZONTAL PAIR OF THE 1867 2-SHILLING IN THE MILKY BLUE SHADE. AN ESPECIALLY RARE SHADE AND EXPONENTIALLY SO AS A MULTIPLE. QUITE LIKELY THE ONLY EXISTING UNUSED MULTIPLE.

While larger used multiples are known, this is the only unused multiple we have been able to locate. Ex Alcock and Baillie. With 1971 B.P.A. certificate. Catalogued as singles. SG £48,000. Scott \$40,000.00..... E. 15,000-20,000

1880 2-SHILLING BROWN, PLATE 1
RARE IN SOUND ORIGINAL-GUM CONDITION



3059

3059° ★ **1880, 2sh Brown (SG Specialised J120; SG 121; Scott 56).** Plate 1, lettered O-D, wing margin at right, original gum, lightly hinged, beautiful depth of color on bright paper

FINE EXAMPLE OF THE RARE 1880 2-SHILLING BROWN. A CHALLENGING STAMP TO ACQUIRE, ESPECIALLY IN THIS PRISTINE STATE OF PRESERVATION.

In 1879 the Universal Postal Union recommended establishing an international color standard for stamps in the basic UPU rates. This required changing the 2½p to Blue, but that conflicted with the then-current 2sh color. Brown was selected as the replacement color, and De La Rue printed a new batch of stamps which were released in Feb. 1880. The stamps were withdrawn on July 16, 1880, creating a period of about six months when these stamps were on sale. The short-lived sale period of the 2sh Brown explains its rarity, particularly in unused condition.

Ex Baillie. SG £30,000. Scott \$27,500.00. E. 10,000-15,000

DE LA RUE HIGH VALUES



3060

3060°★ **1867, 5sh Rose (SG Specialised J121(1); SG 126; Scott 57).** Plate 1, lettered A-G, original gum, lightly hinged, well-centered, deep rich color, highly detailed impression on fresh paper

VERY FINE. A FRESH EXAMPLE OF THE 1867 5-SHILLING ROSE FROM PLATE 1. AN UNCOMMON STAMP IN THIS PREMIUM CONDITION.

This issue is notoriously poorly centered, with this example far bettered centered than most. Ex Baillie. With 1996 B.P.A. certificate. SG £11,000. Scott \$11,000.00.....
..... E. 4,000-5,000

3061°S **1882, 5sh Pale Rose, "Specimen" Overprint (SG Specialised J122s; SG 127s; Scott 57aS var).** Plate 2, lettered D-G, "Specimen" Ty. 9, original gum, lightly hinged, bright shade, fresh and Fine, SG £1,750..... E. 400-500



3061



3062

- 3062°★ **1874, 5sh Pale Rose (SG Specialised J122; SG 127; Scott 57a).** Plate 2, lettered E-E, original gum, h.r., couple very light gum bends, bright shade, well-incised impression
 VERY FINE EXAMPLE OF THE 5-SHILLING PALE ROSE FROM PLATE 2.
 Printed about seven years after Plate 1, examples from the Plate 2 printing are equally as scarce, if not more so, in sound and original-gum condition. With 1985 B.P.A. certificate.
 SG £18,000. Scott \$17,500.00..... E. 5,000-7,500



3063

- 3063°S **1878, 10sh Greenish Grey, "Specimen" Overprint (SG Specialised J124t; SG 128s; Scott 74S).** Plate 1, lettered D-B, "Specimen" Ty. 9, no gum, rich color, minute corner crease, otherwise Very Fine, SG £4,250 E. 500-750

1878 10-SHILLING GREENISH GREY, WATERMARK MALTESE CROSS
A CHOICE ORIGINAL-GUM EXAMPLE OF THIS RARITY



3064

3064° ★ **1878, 10sh Greenish Grey (SG Specialised J124; SG 128; Scott 74).** Plate 1, lettered H-B, original gum, lightly hinged, exceptionally well-centered for this issue, intense shade and sharp impression, minute surface mark just below “P” of “Postage” which is barely detectible (not even mentioned on accompanying certificate)

VERY FINE EXAMPLE OF THIS IMMENSE GREAT BRITAIN RARITY — THE 1878 10-SHILLING GREENISH GREY. EASILY ONE OF THE FINEST OF THE ORIGINAL-GUM EXAMPLES KNOWN.

While used examples are available, original-gum examples are rarely encountered. When unused copies are offered, they invariably have major faults, including repairs and/or regumming. This is the first example we have offered unused, in any condition, since keeping computerized records.

Ex Baillie. With 1986 B.P.A. certificate. SG £60,000. Scott \$60,000.00. ... E. 30,000-40,000

1883 10-SHILLING GREY GREEN ON BLUED PAPER
THE SUPERB EX DALE AND BAILLIE EXAMPLE



3065

3065° ★ **1883, 10sh Grey Green on Blued Paper (SG Specialised J125; SG 131; Scott 91).** Plate 1, lettered E-H, original gum, h.r., incredibly well-centered for the issue, deep rich color on lightly blued paper, small inclusion on gum mentioned for complete accuracy only

VERY FINE AND MARVELOUSLY SUPERB EXAMPLE OF THE 1883 10-SHILLING ON BLuish PAPER. ONE OF THE RAREST REGULARLY ISSUED UNUSED STAMPS OF GREAT BRITAIN — MISSING FROM EVEN THE MOST ADVANCED COLLECTIONS.

As written in Wiseman, the Post Office circular of Sep. 26, 1878, coinciding with the release of the first 10sh (SG 128), stated "*Postmasters are requested to use them as far as possible in denoting the charges for unpaid postage etc. on Head Office letter bill docketts...*" Therefore, at the time of issue, there was no regular postal need for stamps of this high denomination. Other than serving as postage due stamps on the letter bill docketts, these ultimately came to be used for bulk mailing in 1883. Reports also show that this stamp was supplied only to the major post offices and not widely circulated. It is obvious from these circumstances that very few unused examples were saved for stamp collectors.

Ex Dale and Baillie. With 1955 R.P.S. and 1991 B.P.A. certificates. SG £135,000. Scott \$135,000.00..... E. 50,000-60,000

1870 ONE-POUND BROWN LILAC, WATERMARKED MALTESE CROSS
ONE OF THE FINEST KNOWN EXAMPLES OF THIS ICONIC RARITY



3066

3066° ★ **1878, £1 Brown Lilac (SG Specialised J126; SG 129; Scott 75).** Plate 1, lettered G-D, original gum, lightly hinged, impressive centering with wide margins, deep rich shade on bright paper

VERY FINE. AN EXCEPTIONALLY CHOICE ORIGINAL-GUM EXAMPLE OF THE ICONIC AND RARE 1878 ONE-POUND BROWN LILAC. EASILY ONE OF THE FINEST AMONG THE MINUTE NUMBER THAT EXIST IN SOUND ORIGINAL-GUM CONDITION.

This is a key stamp for even the most advanced Great Britain collection and in condition that would satisfy the most fastidious collector.

Ex Baillie. With 1987 B.P.A. certificate. SG £90,000. Scott \$90,000.00. ... E. 40,000-50,000



3067

1882 ONE-POUND BROWN LILAC ON BLUED PAPER
THE FINEST ORIGINAL-GUM EXAMPLE IN EXISTENCE

3067° ★ **1882, £1 Brown Lilac on Blued Paper (SG Specialised J127; SG 132; Scott 92).** Plate 1, lettered E-F, original gum, minor h.r., perfectly centered with wide and balanced margins, incredibly rich color on slightly blued paper

EXTREMELY FINE GEM. AN IMPECCABLE SOUND ORIGINAL-GUM EXAMPLE OF THE 1882 ONE-POUND BROWN LILAC ON BLUED PAPER. A MONUMENTAL RARITY AND ONE OF THE HIGHLIGHTS OF THE DIMITRIS BERTSIMAS COLLECTION OF GREAT BRITAIN. WITHOUT QUESTION, THE FINEST EXAMPLE KNOWN — COMBINING CENTERING, COLOR AND OVERALL FRESHNESS.

Three fundamental circumstances explain the great rarity of original-gum examples of Great Britain's classic high-denomination stamps. First, there was an underlying lack of postal necessity, since Parcel Post service was not available until 1883; therefore, the high values were generally used as postage due stamps on letter bill dockets. Second, large denominations were only circulated to post offices in major cities. Third, stamp collecting was just beginning to gain popularity, and few collectors or dealers had the means to invest heavily in the higher denominations — a sterling pound was a significant sum of money to spend on one stamp.

Our exhaustive search of famous name auction sales spanning decades reveals few unused examples in any condition. In total, it is believed that no more than 20-30 examples exist in original-gum condition. Very few are completely sound and well-centered. In fact, we could not locate another stamp of the quality of the example offered here.

Ex Gross. With 1994 B.P.A. certificate. SG £175,000. Scott \$155,000.00.....
..... E. 75,000-100,000



3068

3068°S **1878, £1 Brown Lilac, “Specimen” Overprint (SG Specialised J126t; SG 129s; Scott 75S var).** Plate 1, lettered D-J, “Specimen” Ty. 9, no gum, couple small toned spots, Fine appearance, a scarce “Specimen”, affordable in comparison to the issued stamp which catalogues £90,000, SG £6,250..... E. 750-1,000



3069

3069°S **1882, £5 Bright Orange on Blued Paper, “Specimen” Overprint (SG Specialised J128s; SG 137s; Scott 93S).** Plate 1, lettered D-C, “Specimen” Ty. 9, original gum, vibrant color on lightly blued paper, exceptional centering, faintest trace of a bend along top only seen in fluid, still a Very Fine example of this scarce and desirable “Specimen”, SG £3,500..... E. 1,000-1,500



3070

3070°★ **1882, £5 Orange (SG Specialised J128; SG 137; Scott 93).** Plate 1, lettered A-C, original gum, lightly hinged, vivid color on bright paper, wide margins

VERY FINE. A WONDERFULLY CHOICE EXAMPLE OF THIS POPULAR 1882 5-POUND HIGH VALUE.

Ex Alcock and Baillie. With 1974 B.P.A. certificate. SG £14,500. Scott \$14,000.00.....
..... E. 5,000-7,500

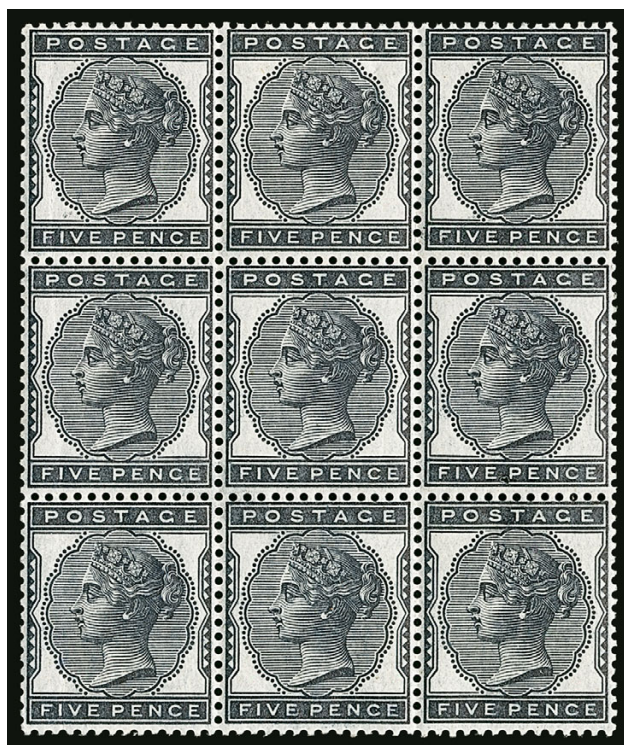


3071

3071°★ **1882, £5 Orange (SG Specialised J128; SG 137; Scott 93).** Plate 1, lettered D-K, original gum, exceptional centering, bold color on bright paper, gum creases which frequently affect this large format issue

VERY FINE APPEARING EXAMPLE OF THE 1882 5-POUND ORANGE.

SG £14,500. Scott \$14,000.00..... E. 2,000-3,000



3072

3072° ★田 1881, 5p Indigo (SG Specialised K6; SG 169; Scott 85). Block of nine, original gum, top row lightly hinged, bottom two rows **Mint N.H.**, well-centered, intense shade and razor-sharp impression on fresh paper, light vertical gum bend thru left column

VERY FINE AND PARTICULARLY EYE-APPEALING MULTIPLE OF THE 5-PENCE INDIGO. NOTABLY RARE IN A BLOCK THIS SIZE.

Ex Baillie. SG as hinged block of four and five singles £7,875..... E. 4,000-5,000



3073

3073° ★田 1881, 1p Bluish Lilac, 14 Dots (SG Specialised K7(2); SG 170 var; Scott 88 var). Block of six with interpanneau selvaige at bottom, original gum, top center stamp h.r., other stamps **Mint N.H.**, beautifully centered, fresh color, selvaige with minor pulled perf and small gum bend of no consequence, Very Fine, a scarce multiple, a new batch of ink caused a slightly bluish hue before being replaced for the next printing, ex Baillie, SG as hinged singles £3,300 E. 1,500-2,000

1881 ONE-PENNY LILAC, 16 DOTS
 PRINTED ON BOTH SIDES AND WATERMARK INVERTED
 A UNIQUE PAIR OF MATCHED CONTROL BLOCKS



3074—both blocks shown face and back

3074° ★ 田 1881, 1p Lilac, 16 Dots, Printed Both Sides, Watermark Inverted (SG Specialised K8(1)ha; SG 173a; Scott 89a). Two matching blocks of six with bottom selva showing control “L”, one with control on normal side and other on gummed side, original gum, lightly hinged, wonderfully rich color, strong second impressions showing clear design, both featuring the inverted watermark, one block with three stamps showing slight scuff from hinge removal

VERY FINE. A STRIKING AND UNIQUE PAIR OF MATCHED CONTROL SELVA BLOCKS OF SIX WITH DOUBLE ERROR — PRINTED ON BOTH SIDES AND WATERMARK INVERTED.

The Printed on Both Sides error only occurs on the Control L sheets. Ex Baillie. SG as singles with no premium for the position blocks £10,800..... E. 5,000-7,500



3075

3075° ★ 田 1881, 1p Lilac, 16 Dots, Double Perforation (SG Specialised K8(1)p; SG 172 var; Scott 89 var). Bottom left corner selvage block of eight, original gum, top row with h.r.'s, bottom row **Mint N.H.**, perfs clearly doubled between bottom row and selvage and vertically along bottom row (causing the obvious separations), Very Fine, ex Baillie, listed but unpriced in SG Specialised E. 400-500



3076

3076° ★★ 田 1883, 6p on 6p Lilac Surcharge (SG Specialised K8B; SG 162; Scott 95). Mint N.H. top right corner selvage block of sixteen, Plate 18, lettered A-I to D-L, especially well-centered, bold color, light gum bends affecting two stamps at bottom left and fold along perfs between first two rows

EXTREMELY FINE. A PRISTINE AND STRIKING BLOCK OF THE 6-PENCE UNIFIED ISSUE SURCHARGE.

Trials of these surcharges were originally done on the 1p Inland Revenue in black. It was decided that Black clashed with cancels too closely and Carmine was chosen. Sheets of 3p, 6p and 1sh sheets from existing stock were chosen to be overprinted. Due to an objection from the Telegraph Branch, the 1sh was pulled from production. Sheets of the surcharged 3p and 6p were broken into blocks of 40 before sale.

SG as four hinged blocks £13,600. E. 7,500-10,000

1882 ONE-SHILLING PURPLE
INTENDED FOR SURCHARGE AND UNISSUED
AN ELUSIVE GREAT BRITAIN RARITY



3077

3077° ★ **1882, 1sh Purple, Line Perf 14, Intended for Surcharge and Unissued (SG Specialised K8C; SG 163 Footnote; Scott 87 Footnote).** Plate 14, lettered D-G, part original gum as always (due to removal from Stamp Committee presentation book), excellent centering, fresh color

VERY FINE. A SUPERB EXAMPLE OF THE UNISSUED ONE-SHILLING PURPLE, PLATE 14 WITH LINE PERF 14. OF THE 36 IMPRIMATURS ORIGINALLY PERFORATED, LESS THAN HALF OF THOSE ARE THOUGHT TO EXIST TODAY, ALL ORIGINATING FROM THE STAMP COMMITTEE PRESENTATION BOOKS.

Only 36 copies of the “Before and After the Stamp Committee” presentation books were given as gifts to officials, including Queen Victoria (it is now part of the Royal Collection with 1sh Purple separated). All known examples of the 1sh Purple originate from these books, although not all 36 books contained one. Some contained the 1sh Orange Brown instead, and it is believed that fewer than half of the books contained the 1sh Purple. Remarkably, the Bertsimas collection also features a complete presentation book with the 1sh Purple (see lot 3092).

This issue was supposed to be surcharged 1sh, similar to the 3p and 6p (SG 159, 162). There was a great need for stamps for telegraph purposes, but the final product never came to fruition and production was stopped midway. De La Rue supplied the stamps quickly, taking the registration sheets for the creation of the presentation books. As they were received imperforate, they had to be hurriedly perforated to look like issued stamps for inclusion in those books.

Ex Baillie. With 2005 B.P.A. certificate. SG £15,000..... E. 7,500-10,000



3078



3080

- 3078°S **1883, 2sh6p Lilac on Blued Paper, “Specimen” Overprint (SG Specialised K9s; SG 175s; Scott 96aS).** Lettered I-D, “Specimen” Ty. 9, original gum, exceptionally well-centered, Extremely Fine, SG £625 E. 300-400



3079

- 3079°★ **1883, 2sh6p Lilac on Blued Paper (SG Specialised K9; SG 175; Scott 96a).** Lettered F-B, original gum, lightly hinged, excellent centering with wide margins, bright shade and sharp impression

EXTREMELY FINE. A CHOICE EXAMPLE OF THE SCARCE 2-SHILLING 6-PENCE ON BLUED PAPER.

This value was adopted to serve postal duty and to replace the 2sh6p Inland Revenue embossed stamp, hence the “Postage & Revenue” legend. No essays were created for this value, as it was hastily executed by adapting a 3sh essay. It shows the tightly spaced wording, and the “2/6” looks more like a fraction than a shilling value.

Ex Gross. With 1990 R.P.S. certificate. SG £6,750. Scott \$9,250.00. E. 4,000-5,000

- 3080°★ **1884, 2sh6p Deep Lilac (SG Specialised K10(2); SG 179; Scott 96 var).** Lettered N-C, original gum, lightly hinged, remarkably well-centered with wide margins, deep rich shade, Extremely Fine, ex Baillie, SG £825, Scott \$625.00 as Lilac E. 300-400

- 3081° ★ **1884, 2sh6p Deep Lilac on Blued Paper from “White Paper” Period (SG Specialised K10(2)a; SG 179a; Scott 96 var).** Lettered B-B, original gum, minor h.r., well-centered with wide margins, intensely rich color

VERY FINE EXAMPLE OF THE 2-SHILLING 6-PENCE ON BLUED PAPER DURING THE WHITE PAPER PERIOD. AN UNUSUAL AND RARE VARIETY.

The Blued paper is often referred to as “Revenue” paper, as it was chemically treated to prevent reuse of pen-cancelled revenue stamps. It is generally assumed that the 1883 Issue was first printed on this paper to use up the stock on hand, since high denomination stamps were not pen-cancelled, thus eliminating the specific need for it. The question of why this particular blued paper stock was used during the white paper period is still up for debate. The only logical conclusion put forth by Wiseman is that due to the lack of stock controls at Somerset House, some old stock could have been previously overlooked and used for the 1884 printing.

Ex Baillie. With 1975 R.P.S. certificate. SG £9,000.
..... E. 3,000-4,000



3081



3082

- 3082° ★ **1884, 5sh Rose on Blued Paper (SG Specialised K11; SG 176; Scott 108a).** Lettered B-H, original gum, lightly hinged, outstanding centering with balanced margins, lovely shade on clearly blued paper

EXTREMELY FINE. A SPECTACULAR EXAMPLE OF THIS RARE 5-SHILLING ROSE ON BLUED PAPER, ESPECIALLY SO IN THIS PRISTINE CONDITION.

Despite its high catalogue value, examples of this stamp are available on the market. However, what should not be overlooked is the condition of almost all examples offered for sale. Most are slightly off center, regummed, repaired and/or have surface rubbing. Examples with none of those problems are rare, and the stamp offered here is one of the finest extant.

Ex Baillie. With 1990 R.P.S. certificate. SG £18,000. Scott \$18,750.00.... E. 7,500-10,000



3083



3084

- 3083° ★ **1884, 5sh Rose (SG Specialised K12(1); SG 180; Scott 108).** Lettered I-H, original gum, lightly hinged, bright color, gorgeous centering, Extremely Fine, a choice example, ex Baillie, SG £1,100, Scott \$1,100.00..... E. 400-500
- 3084° S **1884, 10sh Cobalt on Blued Paper, “Specimen” Overprint (SG Specialised K13t; SG 177as; Scott 109cS).** Lettered A-D, “Specimen” Ty. 9, original gum, lightly hinged, few creases and small surface scrape, otherwise a Fine example of this “Specimen” in the rare Cobalt shade, SG £5,000..... E. 500-750



3085

- 3085° ★ **1884, 10sh Ultramarine on Blued Paper (SG Specialised K13(1); SG 177; Scott 109b).** Lettered I-G, original gum, lightly hinged, strong color on lightly blued paper, couple natural paper wrinkles (not mentioned on accompanying certificates)
- VERY FINE. AN IMMENSELY RARE EXAMPLE OF THE 10-SHILLING ULTRAMARINE ON BLUED PAPER. A MAJOR GREAT BRITAIN RARITY, ESPECIALLY SO IN THIS CHOICE CONDITION.
- The color of this issue, unlike the 5sh, was undecided for many months. The De La Rue First Scheme was in Brown, Second Scheme in Red and Third Scheme in Brown again. It was not until the Fourth Scheme submitted on Dec. 12, 1882, that the Ultramarine color was selected.
- Ex Baillie and Gross. With 1969 and 1987 R.P.S. certificates. SG £40,000. Scott \$40,000.00 E. 15,000-20,000

1884 10-SHILLING COBALT, WATERMARK ANCHOR
ONE OF THE FINEST EXAMPLES IN EXISTENCE



3086

3086°★ **1884, 10sh Cobalt (SG Specialised K14(1); SG 182; Scott 109a).** Lettered D-H, original gum, lightly hinged, beautifully centered, rich color of this distinctive shade, couple minor natural gum wrinkles

VERY FINE EXAMPLE OF THE 1884 10-SHILLING COBALT. EASILY ONE OF THE FINEST EXAMPLES OF THE SMALL HANDFUL KNOWN OF THIS SUBTLE BUT DISTINCTIVE SHADE.

Wiseman's theory that this shade resulted from chemical treatment of the paper is conjectural. Without adequate studies, it is still debatable whether this shade is a chemical changeling or the result of different pigments used in printing. Specialists agree that this shade differs from Ultramarine and is truly rare.

The impressive condition of this stamp mandated a small comment on the R.P.S. certificate as "*Memo: A fine stamp*". While seemingly innocuous, notations of the general quality of stamps are rarely seen on certificates unless truly warranted and out of the norm.

Ex Baillie. With 1990 R.P.S. certificate. SG £42,000. Scott \$40,000.00. E. 15,000-20,000



3087

- 3087°★ 1884, 10sh Ultramarine (SG Specialised K14(2); SG 183; Scott 109). Lettered F-C, original gum, lightly hinged, well-centered, fresh color and impression on bright paper, Very Fine and choice, ex Baillie, SG £2,250, Scott \$2,250.00..... E. 750-1,000



3088

- 3088°★ 1887, 10sh Pale Ultramarine (SG Specialised K14(3); SG 183a; Scott 109 var). Lettered F-F, original gum, lightly hinged, wide margins, pretty shade, Very Fine, ex Baillie, SG £2,500, Scott \$2,250 as Ultramarine..... E. 750-1,000



3089

- 3089°S 1884, £1 Brown Violet, Watermarked Crowns, "Specimen" Overprint (SG Specialised K15t; SG 185s; Scott 110S). Lettered G-B, "Specimen" Ty. 9, original gum, lovely rich shade, some slight paper adhesion on gum but free from the myriad of faults that often plague this issue, Fine, SG £2,800..... E. 750-1,000

1884 ONE-POUND BROWN LILAC, WATERMARK CROWNS
A HANDSOME ORIGINAL-GUM EXAMPLE



3090

- 3090°★ **1884, £1 Brown Lilac, Watermark Crowns (SG Specialised K15; SG 185; Scott 110).** Lettered B-B, original gum, minute h.r., well-centered, deep rich color on bright paper, accompanying certificate mentions "slightly rubbed" which, in our opinion, is so insignificant as to be unworthy of mention
- VERY FINE. A CHOICE EXAMPLE OF THE DESIRABLE 1884 ONE-POUND WITH WATERMARK CROWNS. PARTICULARLY ELUSIVE IN THIS QUALITY CONDITION WITH ORIGINAL-GUM.
- Ex Gross. With 1981 B.P.A. certificate. SG £32,000. Scott \$32,500.00..... E. 10,000-15,000



3091

1888 ONE-POUND BROWN LILAC, WATERMARK ORBS
A SUPERB AND EYE-APPEALING EXAMPLE OF THIS FAMOUS RARITY

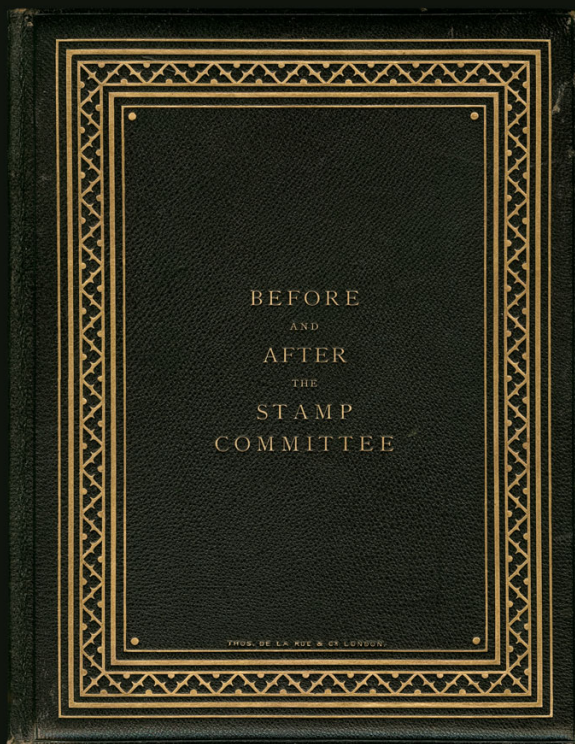
3091°★ **1888, £1 Brown Lilac, Watermark Orbs (SG Specialised K16; SG 186; Scott 123).**
Lettered A-D, original gum, lightly hinged, incredible depth of color on pristine bright
paper, completely free of the maladies that plague these long stamps

VERY FINE AND CHOICE EXAMPLE OF THE ONE-POUND BROWN LILAC ON WATERMARK
ORBS PAPER. ONE OF THE FINEST EXAMPLES IN EXISTENCE, BOASTING SUPERB OVERALL
FRESHNESS. AN ICONIC GREAT BRITAIN RARITY.

A little known fact about the £1 on Watermark Orbs paper is that this issue was printed
in error. Wiseman explains in detail that on Nov. 5, 1887, a Warrant was issued calling
for the stamps to be printed. The word “Orbs” was accidentally written instead of
“Crowns”. The error was noticed well before the supply was exhausted, but the Orbs
stock was issued nonetheless.

Owing to the long size of this stamp, examples invariably have faults such as creases and
bends. Many unused examples have also been regummed. An example free of faults with
original gum is a great rarity.

Ex Baillie. Signed A. Diena and Mondolfo. With 1978 B.P.A. certificate. SG £72,000. Scott
\$75,000.00..... E. 40,000-50,000



SERIES SUPERSEDED BY THE ISSUE OF APRIL, 1884.



SERIES ISSUED APRIL, 1884.



SERIES DETERMINED UPON BY THE STAMP COMMITTEE
AND ISSUED JANUARY, 1887.



1884 “BEFORE AND AFTER THE STAMP COMMITTEE”
ONE OF THE LAST REMAINING COMPLETE PRESENTATION BOOKS
OF THE 36 PRODUCED

3092°P **1884-1888 Complete “Before and After the Stamp Committee” Presentation Book.** Original binding with three card pages with mounted stamps separated for display, first page with “*Series Superseded by the Issue of April 1884.*” comprising the Line Perforated 14 Imprimaturs including the two key values of **9p Straw, Plate 5 (SG Spec. J95, £20,000) and 1sh Purple, Plate 14 (SG Spec. K8C, £15,000)** plus 1880 ½p-5p Provisional Issue, 1881 1p 16 Dots, 1881 2½p Blue, Plate 22, 3p Rose, Plate 21 and 4p Grey Brown, Plate 18, second page with “*Series Issued April, 1884.*” comprising of 1883 ½p-1sh with printed information of Committee and De La Rue Officials, third page with “*Series Determined Upon by the Stamp Committee and Issued January, 1887.*” comprising of the 1887-92 “Jubilee” with eleven values from ½p-1sh, remarkably fresh overall

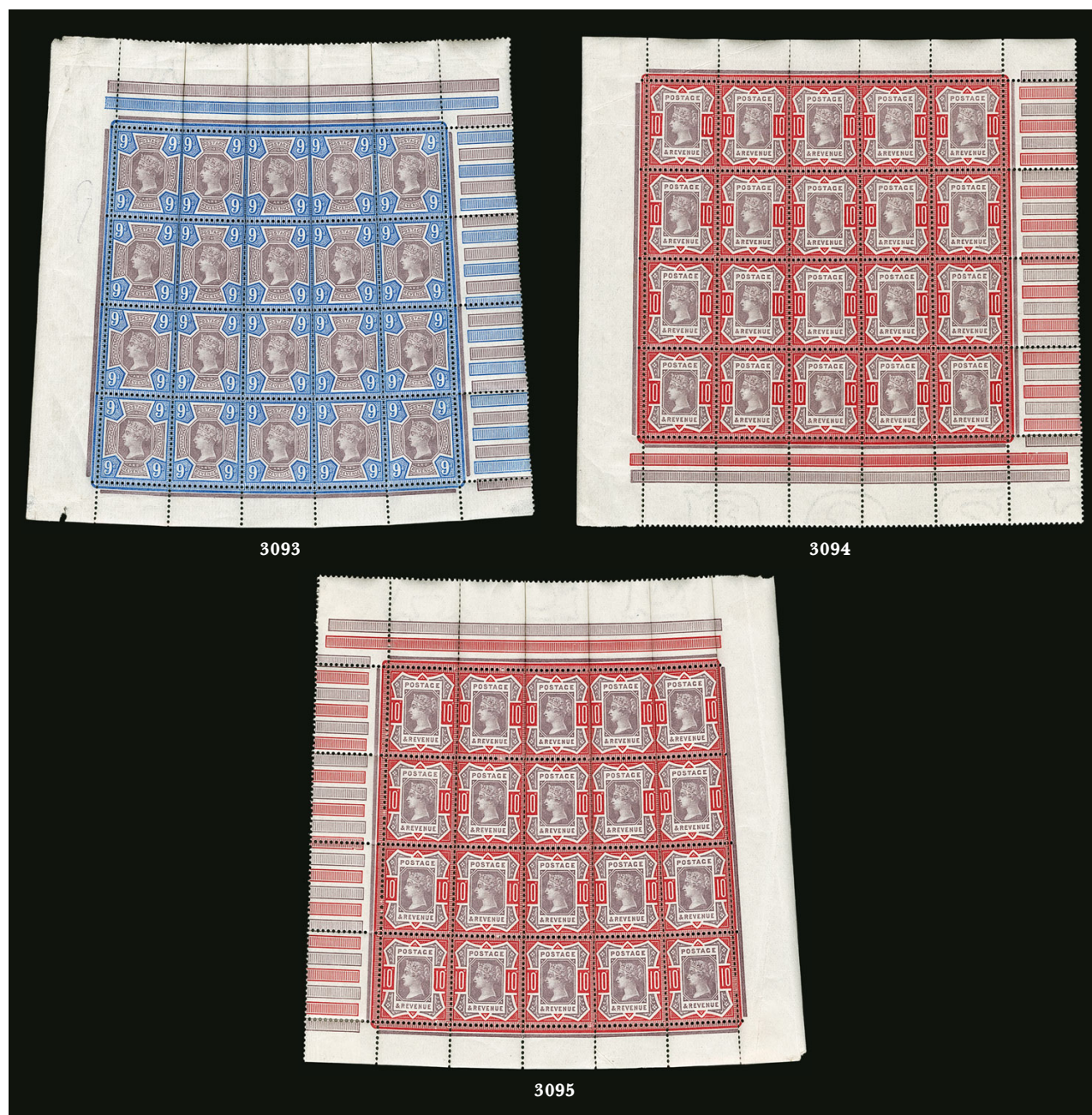
VERY FINE. ONE OF THE FEW INTACT STAMP COMMITTEE PRESENTATION BOOKS SURVIVING FROM THE ORIGINAL 36 GIVEN TO OFFICIALS AND DIGNITARIES, MOST OF WHICH DID NOT INCLUDE THE 9-PENCE STRAW AND ONE-SHILLING PURPLE.

Only 36 copies of the “Before and After the Stamp Committee” presentation books were given as gifts to officials, including Queen Victoria (it is now part of the Royal Collection with 1sh Purple separated). All known examples of the 1sh Purple originate from these books, although not all 36 books contained one. Some contained the 1sh Orange Brown instead, and it is believed that fewer than half of the books contained the 1sh Purple. Remarkably, the Bertsimas collection also features a single of the 1sh Purple (see lot 3077).

Original reports indicated that only six of the presentation books contained the 1sh Purple, but there were probably more. Due to collector demand for singles, many of the pages have been destroyed with the key values removed. Very few complete presentation books with the 9p Straw and 1sh Purple still exist.

Ex Manzi and Baillie. E. 20,000-30,000

JUBILEE ISSUE



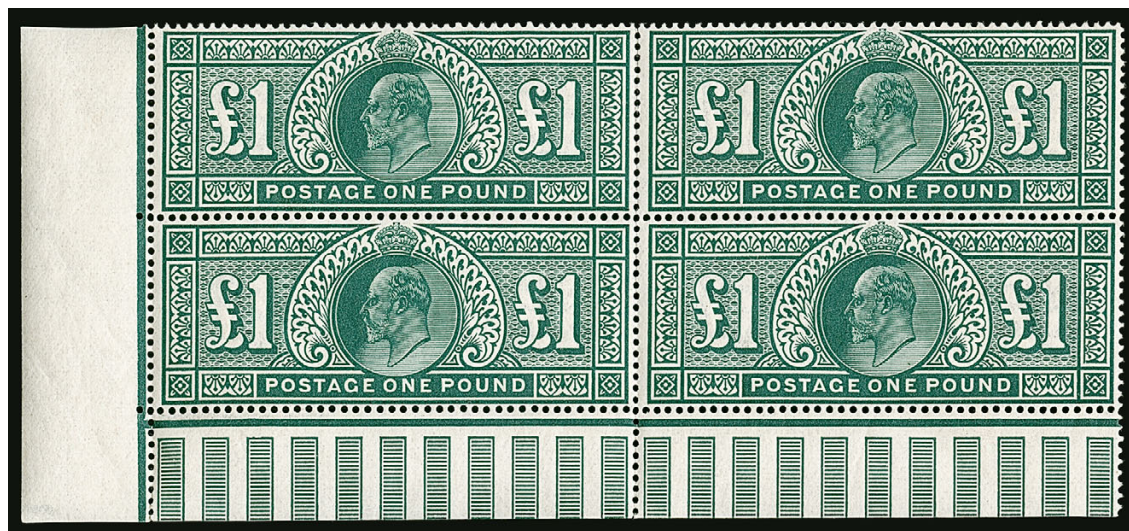
- 3093°★★田 1887, 9p Dull Purple & Blue (SG Specialised K38(1); SG 209; Scott 120). Complete pane of 20 with full “Jubilee” lines, **Mint N.H.**, bold and fresh colors, small selvage faults including thin and small nick at bottom left plus creasing, substantial telescoping of vertical perforations, still Fine and attractive complete pane, ex Baillie, SG as four blocks and four singles £2,340..... E. 500-750
- 3094°★★田 1890, 10p Dull Purple & Carmine (SG Specialised K39(1); SG 210; Scott 121). Complete pane of 20 with full “Jubilee” lines, stamps **Mint N.H.**, lightly hinged in selvage only, excellent colors on fresh paper, some light gum bends mostly in selvage, fresh and Very Fine, ex Baillie, SG as four blocks and four singles £2,040..... E. 750-1,000
- 3095°★★田 1890, 10p Dull Purple & Scarlet (SG Specialised K39(3); SG 210b; Scott 121b). Complete pane of 20 with full “Jubilee” lines, stamps **Mint N.H.**, few hinges in selvage only, deep rich colors, pane additionally has **two plate varieties** on position 1 with damaged left tablet and position 16 with clipped corner and cracked plate (SG Spec. K39(3)d and K39(3)e), substantial telescoping along vertical perfs and some creasing in selvage, otherwise a Fine and scarce complete pane in this shade, ex Baillie, SG as singles £3,800..... E. 1,000-1,500



- 3096° ★ 田 1887, 1sh Grey Green (SG Specialised K40(2); SG 211; Scott 122). Bottom left corner selvage block of eight with "Jubilee" lines, original gum, top and bottom horizontal pairs lightly hinged, center block **Mint N.H.**, lovely shade, folded along perfs at center, trivial selvage faults of no consequence, Very Fine and handsome multiple, ex Baillie, SG as two blocks of four £3,600 (as more common Dull Green shade) E. 1,000-1,500
- 3097° ★ 田 1887-1900 "Jubilee" Issue Multiples. Nineteen blocks, blocks of four including ½p Vermilion (3), ½p Blue Green, 1½p (2), 3p, 4p, 4½p (5), 5p and 10p (2), additionally with blocks of twelve, eight and six of the 4½p, few position corner blocks with selvage, some **Mint N.H.**, mostly Fine-Very Fine, total SG as hinged £1,838 ... (Website PDF) E. 400-500

KING EDWARD VII AND LATER ISSUES

- 3098° ★★ 田 1906, 4p Deep Green & Chocolate Brown, Chalk Surfaced Paper (SG Specialised M24(2); SG 238; Scott 133bc). Block of four, **Mint N.H.**, well-centered, fresh colors, Very Fine, ex Baillie, SG £375 E. 200-300
- 3099° ★★ 田 1906, 5p Slate Purple & Ultramarine, Chalk Surfaced Paper, Flaws on "PO" and "A" (SG Specialised M29(2)i; SG 243a var; Scott 134cd var). Block of four with selvage at left, **Mint N.H.**, bottom left stamp the variety from plate H2, position 11/1, bold colors, Very Fine, ex Baillie, SG as hinged variety and singles £720 E. 400-500



3100

3100° ★田 **1911, £1 Deep Green, Somerset Printing (SG Specialised M56; SG 320; Scott 142b).**
 Bottom left corner selvage block of four with “Jubilee” lines, barely hinged, deep rich
 shade, some light gum wrinkles and minor perf separation

VERY FINE. AN IMPRESSIVE AND HANDSOME CORNER-MARGIN BLOCK OF THE ONE-
 POUND KING EDWARD VII HIGH VALUE. SELDOM OFFERED IN MULTIPLES.

Ex Dale and Baillie. SG £10,000..... E. 5,000-7,500





- 3101°★★田 1911, 1p Pale Rose Carmine, 1p Rose Carmine, Booklet Panes, Watermark Inverted (SG Specialised MB6a(4) and MB6a(5); SG 272Wi; Scott 128e var). Two Mint N.H. booklet panes of six with selva at left, fresh colors with slightly differing shades, Very Fine, ex Baillie, SG as hinged £500.....(Photo Ex) E. 300-400
- 3102°★★田 1924, 1½p Chestnut, Experimental Paper (SG Specialised N35(4)b; SG 420g; Scott 189 var). Block of four, Mint N.H., excellent color, fresh and Very Fine, a scarce variety printed on experimental Waterlow paper with slightly differing watermark, ex Baillie, SG as singles £640 E. 300-400
- 3103°★★田 1924, 9p Olive Green, Watermark Inverted (SG Specialised N43(1)a; SG 427Wi; Scott 198 var). Block of four, Mint N.H., bright color on fresh paper, Very Fine, ex Baillie, SG as singles £700 E. 300-400
- 3104°★田 1935, 1sh Deep Fawn Brown, Harrison Printing (SG Specialised N45(5); SG 429 var; Scott 200 var). Bottom left corner selva control no. W35 block of six, positions 2 and 3 lightly hinged, others Mint N.H., fresh and Very Fine, ex Baillie, SG as singles £1,300 ... E. 500-750

THE SEAHORSE ISSUES

- 3105°★田 1918, 2sh6p Reddish Brown, Bradbury Wilkinson Seahorse (SG Specialised N65(4); SG 415; Scott 179b). Bottom right corner selva block of four, top stamp minor h.r., bottom stamps Mint N.H., wide margins, rich color, one stamp with minor wrinkle and another with minor thin from hinge removal, Very Fine appearance, ex Baillie, SG as singles £970..... E. 400-500



3106

3106° ★田 1913, £1 Green Waterlow Seahorse (SG Specialised N72(1); SG 403; Scott 176). Block of four, top stamps lightly hinged, bottom stamps **Mint N.H.**, huge margins with outstanding centering, bold color and sharp impression on fresh paper, top left stamp with minute thin from hinge removal

EXTREMELY FINE. A SUPERB AND CENTERED BLOCK OF THE ONE-POUND SEAHORSE FROM THE WATERLOW PRINTING. A RARE MULTIPLE.

Ex Baillie. SG as singles £16,600..... E. 7,500-10,000





3107

3107° ★田 1934, 2sh6p-10sh Waterlow Seahorses (SG Specialised N73-N75; SG 450-452; Scott 222-224). Blocks of four, 2sh6p Mint N.H. bottom right corner selvage (hinged in selvage only), 5sh and 10sh with selvage at right, one stamp lightly hinged, others Mint N.H., wonderfully well-centered throughout, brilliant colors

EXTREMELY FINE SET OF BLOCKS OF THE DESIRABLE KING GEORGE V SEAHORSES FROM THE WATERLOW PRINTING.

Ex Barton. SG as singles £4,105. E. 3,000-4,000

1935 2½ PENCE SILVER JUBILEE
 PRUSSIAN BLUE, ERROR OF COLOR
 A PRISTINE MINT NEVER-HINGED SINGLE



3108

3108°★★ 1935, 2½p Prussian Blue, Error of Color, Silver Jubilee (SG Specialised NCom 14; SG 456a; Scott 229a). Mint N.H., intensely rich color in this distinctive shade

VERY FINE. ONE OF THE MOST POPULAR AND ICONIC BRITISH 20TH CENTURY COLOR ERRORS. PARTICULARLY SCARCE IN NEVER-HINGED CONDITION.

It was thought for many years that this was technically a color trial that was accidentally released into circulation. That theory has since been proven wrong, as the stamps were printed in a slightly larger size, indicating that this is a true error of color. Four sheets of this error were released between June 25 and July 4, 1935, three of which are known to have originated at the Upper Edmonton Post Office, totaling 480 stamps. The original discoverer is thought to have used many of them on mail as souvenirs to friends and colleagues. It is believed that less than half of those issued are still in existence.

Ex Baillie. With 2005 B.P.A. certificate. SG £18,500. Scott \$18,500.00.... E. 7,500-10,000

OFFICIALS
INLAND REVENUE



3109

3109°★★田 1882, 1p Lilac, I.R. Official, Overprinted in Blue-Black (SG Specialised L3a; SG O3a; Scott O4 var). Block of six, Mint N.H., Die II, incredibly rich color, wonderful overall centering, position 3 with minor bend and small corner crease, three other stamps with minor offset, neither of which are mentioned on the accompanying certificate, still an Extremely Fine multiple, ex Baillie, with 1982 B.P.A. certificate, SG as hinged singles £1,800 E. 750-1,000



3110

3110°★★田 1885, 2½p Lilac, I.R. Official (SG Specialised L4; SG O6; Scott O5). Block of four, Mint N.H., lettered B-A to C-B, fresh and bright

VERY FINE. AN IMPRESSIVE AND RARE MULTIPLE OF THE 1885 2½-PENCE I.R. OFFICIAL, PARTICULARLY SO IN NEVER-HINGED CONDITION.

Despite the modest catalogue value, sound unused examples are quite challenging, not to mention a multiple. Wiseman specifically comments examples are “*really difficult to find in fine condition*”.

Ex Baillie. With 2005 B.P.A. certificate. SG as hinged £3,000..... E. 1,500-2,000



3111

3111°★田 1882, 6p Grey, I.R. Official (SG Specialised L5; SG O4; Scott O6). Top left corner selva block of four, Plate 18, lettered A-A to B-B, original gum, top stamps lightly hinged, bottom stamps **Mint N.H.**, lovely color, light gum bends not mentioned on accompanying certificate

VERY FINE AND CHOICE MULTIPLE OF THE 1882 6-PENCE I.R. OFFICIAL. A RARE BLOCK.

Ex Baillie. With 2005 B.P.A. certificate. SG as hinged £3,000. E. 1,500-2,000



3112

3112°★ 1890, 5sh Rose, I.R. Official, Raised Stop After "R" (SG Specialised L7(2)a; SG O9a; Scott O8b). Lettered A-H, original gum, lightly hinged, impressively well-centered, wonderfully deep color on bright paper

EXTREMELY FINE GEM EXAMPLE OF THE 5-SHILLING QUEEN VICTORIA I.R. OFFICIAL WITH RAISED PERIOD. A RARE AND POPULAR VARIETY.

The Raised Stop variety occurred on the top row of each pane. The variety was never corrected and is therefore known on all the Queen Victoria and King Edward VII Shilling denominations. According to records listed in Wiseman, only 181 sheets were printed with the variety occurring 16 times in a sheet of 240. Considering natural attrition from use and the already scarce availability of unused Officials, it is unlikely that more than a small handful of examples with this variety are available to collectors today.

With 1978 B.P.A. certificate and endorsed by P.T. Roberts (2018). SG £14,000. Scott \$10,500.00. E. 4,000-5,000



3113

- 3113° ★ **1885, 10sh Cobalt, I.R. Official (SG Specialised L8(3); SG O9cb; Scott O9a).** Lettered C-B, original gum, exceptionally large and well-balanced margins, beautiful shade on bright paper, additional dot after “Official” which is left unmentioned on the accompanying certificate or any reference material we have encountered though remarkably identical in color, shape and impression to those used on “I.R.”

EXTREMELY FINE GEM. A SPECTACULAR EXAMPLE OF THE 10-SHILLING QUEEN VICTORIA I.R. OFFICIAL IN THE COBALT SHADE. A MAJOR DEPARTAMENTAL OFFICIAL RARITY WITH VERY FEW EXAMPLES KNOWN TO EXIST.

Wiseman’s theory that this shade resulted from chemical treatment of the paper is conjectural. Without adequate studies, it is still debatable whether this shade is a chemical changeling or the result of different pigments used in printing. Specialists agree that this shade differs from Ultramarine and is truly rare. The natural attrition, contemporaneous use and the difficulty in acquiring unused Official stamps left very few examples for collectors.

Ex Baillie. Signed Bloch. With 1975 R.P.S. certificate. SG £22,000. Scott \$37,500.00.
..... E. 15,000-20,000

- 3114° ★ **1890, 10sh Ultramarine on White Paper, I.R. Official (SG Specialised L8(4); SG O10; Scott O9).** Lettered F-D, original gum, lightly hinged, pretty pastel shade on bright paper

VERY FINE. A HANDSOME AND CHOICE EXAMPLE OF THE RARE 1890 10-SHILLING I.R. OFFICIAL.

Ex Gross. With 1994 B.P.A. certificate. SG £11,500. Scott \$11,500.00... E. 4,000-5,000



3114



3115

1885 ONE-POUND BROWN LILAC
WATERMARK CROWNS, I.R. OFFICIAL

ONE OF THE FEW SOUND
ORIGINAL-GUM EXAMPLES IN EXISTENCE

- 3115°★ **1885, £1 Brown Lilac, Watermark Crowns, I.R. Official (SG Specialised L9; SG O11; Scott O10).** Lettered J-B, original gum, lightly hinged, strong color
- FINE. AN EXTRAORDINARILY RARE SOUND ORIGINAL-GUM EXAMPLE OF ONE OF THE MOST ICONIC I.R. OFFICIAL VALUES, THE ONE-POUND WITH WATERMARK CROWNS. FEW SOUND EXAMPLES EXIST.
- Owing to its long format, faults are endemic to this value. Most genuine certified examples on the market are unused (regummed), with faults and/or repairs. Examples free of these problems are exceedingly rare.
- Ex Baillie. Signed A. Diena, E. Diena and Mondolfo. With 2000 B.P.A. certificate. SG £75,000. Scott \$80,000.00..... E. 30,000-40,000



3116

1890 ONE-POUND BROWN LILAC
WATERMARK ORBS, I.R. OFFICIAL

A MAJOR RARITY OF GREAT BRITAIN IN PRISTINE CONDITION

3116° ★ **1890, £1 Brown Lilac, Watermark Orbs, I.R. Official (SG Specialised L10; SG O12; Scott O13).** Lettered I-B, original gum, lightly hinged, well-centered, rich luxuriant color on pristine white paper, deeply etched impression

VERY FINE. A FABULOUSLY CHOICE EXAMPLE OF THE HIGHLY SOUGHT-AFTER ONE-POUND I.R. OFFICIAL ON WATERMARK ORBS PAPER. EASILY ONE OF THE FINEST OF THE APPROXIMATELY DOZEN EXAMPLES EXPERTIZED.

A little known fact about the underlying £1 on Watermark Orbs paper stamp is that this issue was printed in error. Wiseman explains in detail that on Nov. 5, 1887, a Warrant was issued calling for the stamps to be printed. The word “Orbs” was accidentally written instead of “Crowns”. The error was noticed well before the supply was exhausted, but the Orbs stock was issued nonetheless. There is no reason to believe the I.R. Official overprint was done to “use up” the supply of these errors.

While some effort was made to prevent unused Official stamps from reaching the general public at the time of issue, there was little stock control, as these stamps were often used by tax collectors rather than Inland Revenue employees. As discussed in Wiseman, enterprising clerks sold examples to the stamp trade, despite official efforts to discourage the practice. By 1896, well after the regular issue and use of the £1 Watermarked Orbs, Official stamps were eventually made available to the public, but their availability was not widely publicized nor were they offered in every post office. These circumstances and the high value of a sterling pound contributed to the rarity of this stamp.

Owing to the long size of this stamp, examples invariably have faults such as creases and bends. Many unused examples have also been regummed. Examples free of faults with original gum are great rarities.

Ex Baillie. Signed Mondolfo. With 1963 A. Diena, 1979 Buhler (also backstamp) and 1980 R.P.S. certificates. SG £100,000. Scott \$100,000.00 E. 50,000-60,000



3117

3117°S 1890, £1 Brown Lilac, Watermark Three Orbs, I.R. Official, “Specimen” Overprint (SG Specialised L10s; SG O12s; Scott O13S). Lettered E-A, “Specimen” Ty. 9, original gum, h.r., natural vertical gum wrinkle at top left, fresh color

FINE AND RARE “SPECIMEN” TYPE 9 OVERPRINT ON THE 1890 ONE-POUND I.R. OFFICIAL WITH WATERMARK THREE ORBS. ONE OF THE RAREST “SPECIMEN” OVERPRINTS OF GREAT BRITAIN.

The “Specimen” is not only an affordable alternative to the issued stamp, a rarity that catalogues £100,000 (Scott \$100,000.00), but it is a rare stamp in its own right, with only a handful in existence.

With 2000 B.P.A. certificate. SG £9,250..... E. 3,000-4,000



3118

3118°★★ 1892, £1 Green, I.R. Official (SG Specialised L11; SG O16; Scott O15). Lettered N-C, Mint N.H., intense shade and crisp impression on fresh paper, light gum wrinkle as usual on these “long” stamps

VERY FINE. A CHOICE NEVER-HINGED EXAMPLE OF THE ONE-POUND GREEN I.R. OFFICIAL. PARTICULARLY RARE IN THIS PRISTINE CONDITION.

This stamp’s rarity is highlighted by the fact that this is the first never-hinged example and only the second unused example we have offered in over 20 years.

Signed A. Diena. With 1985 B.P.A. certificate. Catalogued as hinged. SG £12,500. Scott \$12,500.00..... E. 5,000-7,500

- 3119°★ **1901, 6p Purple on Rose Red, I.R. Official (SG Specialised L15; SG O18; Scott O17).** With small selvage at right, lightly hinged, deep rich colors on fresh paper, Very Fine, with 1984 B.P.A. certificate, SG £500, Scott \$400.00 E. 200-300



3119



3120

- 3120°★ **1901, 1sh Green & Carmine, I.R. Official (SG Specialised L17; SG O19; Scott O18).** Lightly hinged, well-centered, bold colors on bright paper
VERY FINE AND CHOICE EXAMPLE OF THE 1901 ONE-SHILLING I.R. OFFICIAL.
Ex Baillie. With 1989 R.P.S. certificate. SG £4,250. Scott \$4,400.00 E. 1,500-2,000

- 3121°(★) **1902, 2½p Ultramarine, I.R. Official (SG Specialised MO3; SG O22; Scott O21).** Unused (regummed), well-centered, deep rich color, Very Fine, with 2019 B.P.A. certificate, SG £1,000, Scott \$950.00 E. 200-300



3121

1902 ONE-SHILLING KING EDWARD VII, I.R. OFFICIAL
THE LARGEST MULTIPLE IN EXISTENCE



3122

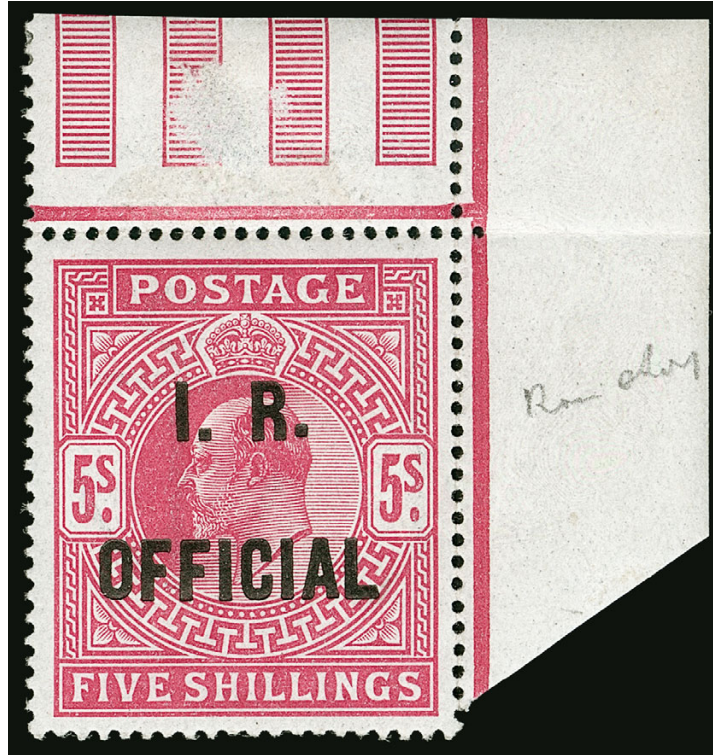
3122°★★田 1902, 1sh Dull Green & Carmine, I.R. Official (SG Specialised MO5; SG O24; Scott O23). Top selvage block of eight, Mint N.H., bright and bold colors, excellent centering, selvage with small faults and position 6 with small stain at bottom (not mentioned on accompanying certificate)

EXTREMELY FINE MULTIPLE OF THE ONE-SHILLING KING EDWARD VII I.R. OFFICIAL IN NEVER-HINGED CONDITION. A STUNNING SHOWPIECE AND THE LARGEST MULTIPLE WE ARE AWARE OF IN PRIVATE HANDS.

The King Edward VII 1sh I.R. Official, according to Wiseman, was issued to bridge the gap between the values of the 6p and 5sh. Interestingly, when issued, there was no particular use for this denomination. Most of the known used examples are registered mail out of Manchester for heavier internal and external mails.

Ex Baillie. With 1978 B.P.A. certificate. SG as two hinged blocks of four £38,500.....
..... E. 10,000-15,000

1902 5-SHILLING KING EDWARD VII, I.R. OFFICIAL
A GEM CORNER SELVAGE SINGLE
DISPLAYING THE RAISED STOP AFTER “R”



3123

3123°★★ 1902, 5sh Bright Carmine, I.R. Official, Raised Stop After “R” (SG Specialised MO6a; SG O25a; Scott O24a). Top right corner selvage single, Mint N.H., marvelously well-centered with wide margins, radiant color on bright paper, selvage with small faults of absolutely no consequence, small pencil note on gum

EXTREMELY FINE. A GEM CORNER SELVAGE SINGLE OF THE 5-SHILLING KING EDWARD VII I.R. OFFICIAL WITH RAISED PERIOD. A SCARCE VARIETY ON AN ALREADY RARE STAMP.

The Raised Stop variety occurred on the top row of each pane. The presence of the sheet margin indicates this came from the last position of the first row. The variety was never corrected and is therefore known on all the Queen Victoria and King Edward VII Shilling denominations. According to records listed in Wiseman, only 69 sheets were printed with the variety occurring 16 times in a sheet of 240. Considering natural attrition from use and the already scarce availability of unused Officials, it is unlikely that more than a small handful of examples with this variety are available to collectors today.

With 1986 Brandon and 1989 B.P.A. certificates. Catalogued as hinged. SG £50,000. Scott \$42,500.00..... E. 20,000-30,000

GOVERNMENT PARCELS



3124

3124° E **1883, 3p on 3p Lilac, Ty. B “Government Parcels” in Red Trial Overprint.** Plate 21, lettered A-F, original gum, paper h.r., rich color

VERY FINE EXAMPLE OF THE IMMENSELY RARE “GOVERNMENT PARCELS” TRIAL OVERPRINT IN RED. ONLY SIX EXAMPLES WERE PREPARED AND OVERPRINTED BY DE LA RUE.

Three different overprint options were presented by De La Rue on the 3p value: the two unaccepted versions in red and black and the eventually accepted overprint in black. Only six examples of this overprint in red were printed. This is a key item for the Great Britain Official collector or exhibitor.

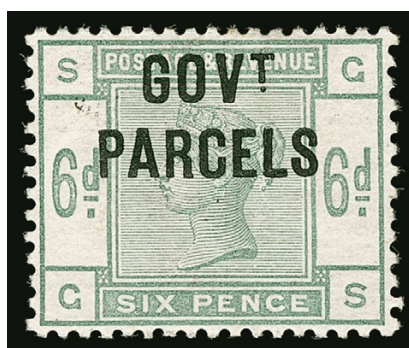
Ex Baillie. With 1981 B.P.A. certificate. SG £11,000..... E. 5,000-7,500

GOVERNMENT
PARCELS
3d

- 3125°★ **1886, 1½p Lilac, Govt. Parcels Official (SG Specialised L18; SG O61; Scott O27).** Lettered L-F, original gum, minor h.r., excellent centering, uncommonly fresh color, Extremely Fine, with 1986 B.P.A. certificate, SG £400, Scott \$400.00..... E. 200-300



3125

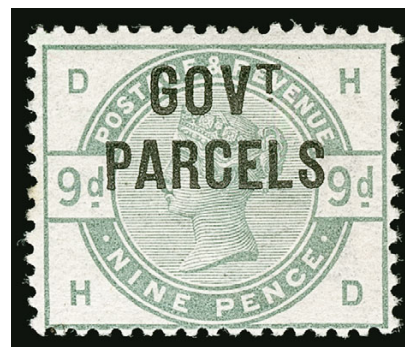


3126

- 3126°★ **1886, 6p Dull Green, Govt. Parcels Official (SG Specialised L19; SG O62; Scott O28).** Lettered G-S, original gum, lightly hinged, unusually well-centered for this tightly spaced stamp, bold color

VERY FINE AND CHOICE. A LOVELY EXAMPLE OF THE 1886 6-PENCE GOVT. PARCELS OFFICIAL.
Ex Gross. With 1986 Brandon certificate. SG £3,500. Scott \$3,150.00..... E. 1,500-2,000

- 3127°★ **1883, 9p Dull Green, Govt. Parcels Official (SG Specialised L20; SG O63; Scott O29).** Lettered H-D, original gum, lightly hinged, excellent color that is uncharacteristic of this issue, Fine, ex Baillie, with 1981 R.P.S. certificate, SG £2,750, Scott \$2,600.00..... E. 750-1,000



3127



3128



3129



3130

- 3128°★ **1883, 1sh Orange Brown, Govt. Parcels Official (SG Specialised L21; SG O64; Scott O30).** Plate 13, lettered C-L, original gum, lightly hinged, lovely rich color, mild gum bend not mentioned on certificate, Very Fine, ex Baillie, signed A. Diena and with 1991 B.P.A. certificate, SG £1,750, Scott \$1,675.00 E. 500-750
- 3129°★ **1890, 1sh Dull Green, Govt. Parcels Official, Overprinted in Blue-Black (SG Specialised L29d; SG O68d; Scott O36 var).** Original gum, lightly hinged, lovely shade, fresh and Fine example of this rare blue-black overprint, with 2019 B.P.A. certificate, listed but unpriced in either Stanley Gibbons or Scott..... E. 500-750
- 3130°★ **1900, 1sh Green & Carmine, Govt. Parcels Official (SG Specialised L30; SG O72; Scott O38).** Lightly hinged, well-centered, bold colors on fresh paper, small surface mark, otherwise Very Fine, with 2019 B.P.A. certificate, SG £650, Scott \$625.00 E. 200-300



3131



3132

- 3131°★ **1902, 9p Dull Purple & Ultramarine, Govt. Parcels (SG Specialised MO12; SG O77; Scott O42).** Partially redistributed gum, well-centered, Very Fine, ex Baillie, with 1960 R.P.S. certificate (not mentioning gum) and endorsed by P.T. Roberts (2018), SG £650, Scott \$625.00 E. 200-300
- 3132°★ **1902, 1sh Dull Green & Carmine, Govt. Parcels (SG Specialised MO13; SG O78; Scott O43).** Lightly hinged, incredibly rich colors, fresh and Very Fine, ex Baillie, with 1960 R.P.S. certificate and endorsed by P.T. Roberts (2018), SG £1,350, Scott \$1,350.00 E. 400-500

OFFICE OF WORKS



3133

3133°★ **1902, 10p Dull Purple & Carmine, O.W. Official (SG Specialised L35; SG O35; Scott O48).** Bottom left corner selva horizontal pair with “Jubilee” lines, strong rich colors

VERY FINE. AN EXCEPTIONAL PAIR OF THE QUEEN VICTORIA 10-PENCE O.W. OFFICIAL. A MAJOR OFFICIAL MULTIPLE RARITY OF WHICH NO MORE THAN 40-60 UNUSED EXAMPLES ARE THOUGHT TO EXIST.

The rarity of this denomination in unused condition is due to two factors. First, the Office of Works was a very small department. Over the course of eight years, only £1,541 of stamps were overprinted with an estimated one 10p used a day. Only 720 10p stamps were overprinted with no more than 560 placed in use (due to registration sheet, “Specimens”, etc.). Second, most unused examples are believed to emanate from the sheet of 80 taken by W.J. Richards in May 1903, which he thought were obsolete. Half were returned by a co-conspirator, leaving 40 plus a few more for collectors. Wiseman considers a mint single comparable in rarity to the £1 I.R. Watermark Orbs, despite the significant difference in market value.

Ex Baillie. With 1982 R.P.S. certificate. SG as two singles £14,500..... E. 5,000-7,500



3134



3135

3134°★ **1902, ½p Blue Green, O.W. Official (SG Specialised MO14; SG O36; Scott O49).** Lightly hinged, deep rich shade, fresh and Fine, ex Baillie, with 1980 R.P.S. certificate, SG £575, Scott \$575.00 E. 200-300

3135°★ **1902, 2½p Ultramarine, O.W. Official (SG Specialised MO17; SG O39; Scott O52).** Lightly hinged, wonderfully fresh color on bright paper, well-centered

VERY FINE. A SURPRISINGLY SCARCE EXAMPLE OF THE 2½-PENCE KING EDWARD VII O.W. OFFICIAL.

This stamp is frequently found with faked overprint. Ex Baillie and Gross. With 1978 B.P.A. certificate and endorsed by P.T. Roberts (2018). SG £3,400. Scott \$3,400.00..... E. 1,500-2,000

1903 10-PENCE KING EDWARD VII, O.W. OFFICIAL
ONE OF THE FINEST EXISTING EXAMPLES
OF THIS OFFICIAL RARITY



3136

3136° ★ **1903, 10p Dull Purple & Carmine, O.W. Official (SG Specialised MO18; SG O40; Scott O53).** With selvage at right showing “Jubilee” line, barely hinging (if at all), rich and bright colors, creased in the selvage only

EXTREMELY FINE AND PRISTINE EXAMPLE OF THE 10-PENCE KING EDWARD VII O.W. OFFICIAL. ONE OF THE RAREST DEPARTMENTAL OFFICIALS, ESPECIALLY IN THIS SUPERB CONDITION WITH SHEET SELVAGE.

According to records, only 14 sheets of 96 were printed. When taking into account the necessary registration sheet, “Specimens”, used examples and those returned after the end of use, the potential supply of unused examples was extraordinarily small. The short span of use also contributed to its rarity, as the earliest known use is from July 1903 and sales ceased in May 1904. While the 10p Queen Victoria had a lower printed quantity, unused examples are more available due to the 40 unused examples that entered the market from the W.J. Richards half-sheet.

A definite count of genuine unused examples is difficult to make, due to the prevalence of fakes, some of which have previously received genuine certificates. Wiseman, along with an Official specialist, concluded that of 90 used examples submitted over the course of 15 years, only 12 were genuine.

Ex Baillie. With 1980 B.P.A. certificate. SG £47,500. Scott \$40,000.00.. E. 20,000-30,000

ARMY OFFICIAL



3137

3137°★田 **1903, 6p Pale Dull Purple, Army Official (SG Specialised MO22; SG O52; Scott O62).** Block of four, top stamps barely hinged, bottom stamps **Mint N.H.**, pretty shade on fresh paper, bottom pair with minor wrinkle and small pencil notation

VERY FINE AND RARE BLOCK OF THE 6-PENCE KING EDWARD VII ARMY OFFICIAL. THIS IS THE LARGEST KNOWN MULTIPLE WITH ONLY ONE OTHER BLOCK THOUGHT TO EXIST.

According to an Official specialist, two blocks of four are known, with the next largest multiple a strip of three. Following the Inland Revenue (I.R.) overprints, requests were made by other government departments for their own overprinted stamps. The Army, along with Office of Works, were rejected in their attempts at first. The Post Office would not supply the stamps free of charge. A case was made to the Treasury and a compromise was molded whereby the stamps were to be purchased straight from the printer.

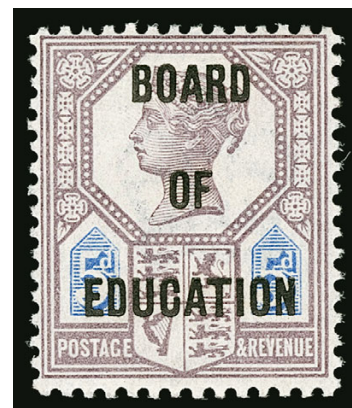
Ex Baillie. With 1947 and 1989 R.P.S. certificates. SG £15,000..... E. 7,500-10,000

BOARD OF EDUCATION OFFICIAL

3138°★★ **1902, 5p Dull Purple & Blue, Board of Education Official (SG Specialised L41; SG O81; Scott O65).** Mint N.H., deep rich colors on bright paper

FINE. A HANDSOME NEVER-HINGED EXAMPLE OF THE SCARCE 1902 5-PENCE BOARD OF EDUCATION OFFICIAL.

Ex Baillie. With 2019 B.P.A. certificate. SG £5,750. Scott \$4,650.00. E. 2,000-3,000



3138

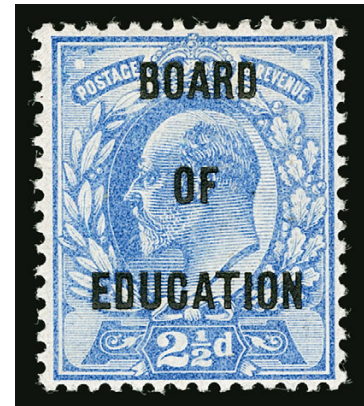


3139

3139°S

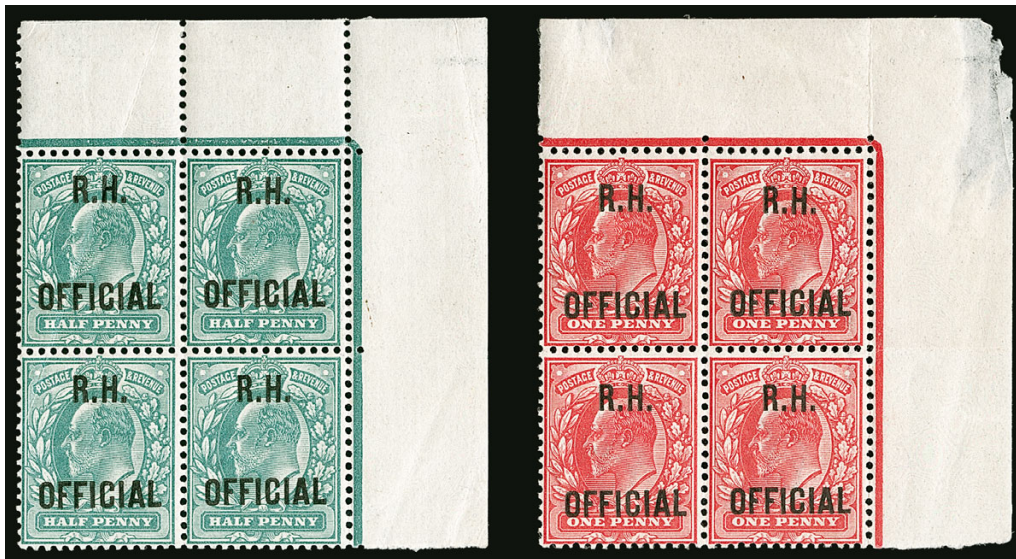
1902, 1sh Grey Green & Carmine, Board of Education Official, “Specimen” Handstamp (SG Specialised L42s; SG O82s; Scott O66S). “Specimen” Ty. 15, original gum, barely hinged, bold colors on bright white paper, couple minor gum bends and small corner crease, otherwise Fine, SG £2,700..... E. 400-500

- 3140°★ **1902, 2½p Ultramarine, Board of Education (SG Specialised MO25; SG O85; Scott O69). Minor h.r., excellent centering, rich color on bright paper**
VERY FINE AND CHOICE EXAMPLE OF THE 1902 2½-PENCE BOARD OF EDUCATION OFFICIAL.
 Ex Baillie. With 1956 R.P.S. certificate and endorsed by P.T. Roberts (2018). SG £4,850. Scott \$5,000.00.....
 E. 1,500-2,000



3140

ROYAL HOUSEHOLD OFFICIAL



3141

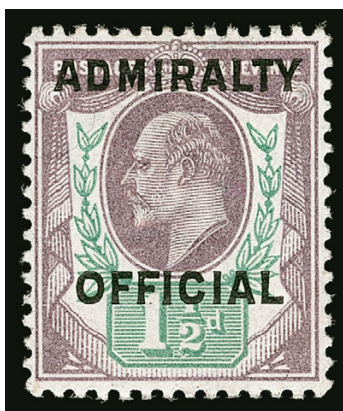
- 3141°★★田 **1902, ½p Blue Green, 1p Scarlet, R.H. Official (SG Specialised MO28-MO29; SG O91-O92; Scott O63-O64). Matching Mint N.H. top right corner selva blocks of four with “Jubilee” lines, excellent colors, ½p with vertical crease affecting two stamps, minor selva faults, each stamp with light backstamp, Very Fine and handsome matched pair of corner blocks, ex Baillie, each with 2005 B.P.A. certificate, SG as hinged £3,800.....**
 E. 1,500-2,000

ADMIRALTY OFFICIAL



3142

- 3142° ★田 1903, 2½p Ultramarine, Admiralty Official (SG Specialised MO34; SG O105; Scott O76). Block of four, top stamps barely hinged, bottom stamps **Mint N.H.**, vibrant color, well-centered overall, position 2 with minute toned spot, otherwise Very Fine, particularly rare as an unused multiple with no more than a few believed to exist, with a significant premium in the SG Specialised as a block versus four singles, ex Baillie, with 1989 B.P.A. certificate, SG as hinged £3,000..... E. 1,000-1,500



3143

- 3143° ★ 1904, 1½p Dull Purple & Green, Admiralty Official (SG Specialised MO38; SG O109; Scott O80). Lightly hinged, especially rich colors, precise centering, Very Fine, ex Baillie, with 1981 B.P.A. certificate, SG £1,200, Scott \$1,150.00 E. 400-500



3144

3144°★★田 1904, 2p Yellowish Green & Carmine Red, Admiralty Official (SG Specialised MO39; SG O110; Scott O81). Mint N.H. block of four, bright colors, slight wrinkle at top and diagonal crease thru right vertical pair, single toned perf at top (none of which are mentioned on the accompanying certificate)

VERY FINE AND EXCEPTIONALLY RARE MULTIPLE OF THE 2-PENCE ADMIRALTY OFFICIAL. VERY FEW MULTIPLES ARE THOUGHT TO EXIST.

In 1903, shortly after the initial printings were done by De La Rue, it was noticed that the electrotype was damaged. It was subsequently remade in a slightly thicker type with narrower setting. The most noticeable difference is the downward middle section of the "M" which is shorter.

Ex Baillie. Each stamp signed Buhler. With clear 1980 B.P.A. certificate. SG as hinged £13,500. E. 4,000-5,000



3145

3145° ★ **1904, 2½p Ultramarine, Admiralty Official (SG Specialised MO40; SG O111; Scott O82).** Small h.r., pretty pastel shade

VERY FINE EXAMPLE OF THE 1904 2½-PENCE ADMIRALTY OFFICIAL.

With 1986 R.P.S. certificate. SG £2,900. Scott \$2,850.00 E. 1,000-1,500



3146

3146° ★ **1903, 3p Dull Purple on Orange Yellow, Admiralty Official (SG Specialised MO41; SG O112; Scott O83).** Small h.r., bright fresh colors, Fine, scarce in sound and original-gum condition, with 1984 B.P.A. certificate, SG £2,600, Scott \$2,500.00 E. 750-1,000

BALANCES FROM THE DIMITRIS BERTSIMAS COLLECTION OF
GREAT BRITAIN UNUSED SINGLES

- 3147° **The Dimitris Bertsimas Great Britain Unused Singles Collection Balance.** Neatly housed in a hingeless Lighthouse album from 1840 thru 1966, Line Engraved while seemingly sparse contains some high-cataloguing stamps such as SG Spec. DS7 regummed with faults (with P.T.S. certificate, SG £48,000), 13 regummed (with B.P.A. certificate, SG £9,500), 35 (with P.T.S. certificate, SG £3,400), 1870 -1/2p complete with exception of Plate 9, Embossed with No. 57 from die 4 regummed with faults (with P.T.S. certificate, SG £13,000), Surface Printed including Nos. 63 original gum with faults (with P.T.S. certificate, SG £14,000), 127 plate 2 with sweated original gum and reperfed (with P.T.S. certificate, SG £18,000), 212 (SG £4,000), plus numerous other examples cataloguing £500-£2,000, some even more, decent run of King Edward VII thru Queen Elizabeth sets and singles including £1 P.U.C. and Seahorses, Back-of-Book with Postage Dues and some Officials including SG O9 regummed and faults (with B.P.A. certificate, SG £12,000), plus a few others with certificates, collection also with two Scott albums with some Queen Elizabeth duplicates and Offices in Africa and Morocco, earlier material condition is mixed including regummed and faults, much appears Fine or better, careful viewing is encouraged which should reveal tremendous catalogue value
.....*Not illustrated* E. 7,500-10,000
- 3148°S **Great Britain “Specimen” Overprint Collection Balance.** 58 stamps, only a few Line Engraved, including SG No. 58s (£3,800) though no gum and with faults, better Surface Printed issues including SG Nos. 127s, 153s, 154s, 156s, 178s, 181s and others ranging from £300-£1,750 each, plus a few King Edward VII, King George V and Government Parcels Officials, higher cataloguing examples generally with no gum, some faults noticed, total catalogue exceeds £16,000 in Stanley Gibbons, mostly Fine-Very Fine.....
.....**(Website PDF)** E. 2,000-3,000

END OF SALE—THANK YOU



BIDS

Use this form to submit absentee bids
or to confirm telephone bids

Sale 1198

March 19, 2019

PADDLE #

1

Please provide the following information:

NAME

ADDRESS

CITY/STATE/ZIP

PHONE MOBILE

EMAIL

2

Have you purchased from us in the past 5 years? ☐ Yes (please go to Section 3)
☐ No (references required below)

STAMP FIRM PHONE

STAMP FIRM PHONE

Please submit references at least **2 business days** before the sale. Bids from new clients will not be executed if satisfactory references are not received in time to be contacted.

3

- Enter the lot number and your corresponding maximum bid in the space below
- Use whole dollar amounts and bid according to the increments (see back of form)
- Bids do not include the **18% Buyer's Premium**, taxes, duty or shipping charges
- Absentee bids will advance at one increment over the next highest competing bid
- "Plus", "Break Tie" or "Buy" bids will not be executed
- Indicate any "Or" bids between lot number/bid entries and bracket your choices
- If you wish to limit the total amount of your bids, follow the instructions below

Lot #	Bid \$	Lot #	Bid \$	Lot #	Bid \$

☐ **Limit Bids:** Check this box if you wish to limit the total hammer price of your bids (excluding 18% Buyer's Premium, taxes, duty and shipping costs). Your bids will be executed until your bidding limit has been reached. The total amount you wish to bid is \$

4

By signing this form, you agree to all of the Conditions of Sale printed in the sale catalogue (printed and digital), including but not limited to a) payment in the manner demanded by the Siegel firm, and b) payment of the 18% Buyer's Premium, any sales tax or customs duty, shipping costs, late charges and

other prescribed charges. You agree that your bids will be executed as a courtesy by Siegel, but you waive the right to make any claim against Siegel or its employees arising from these bids or your participation in the sale. You agree to honor all bids as submitted, regardless of any errors or omissions.

SIGNED DATE

Mail the signed form to Siegel Bid Department, 6 West 48th St., 9th Floor, New York, NY 10036
or email to stamps@siegelauctions.com
or fax to 212-753-6429



Additional Bids

Sale 1198

March 19, 2019

PADDLE #

Lot #	Bid \$	Lot #	Bid \$	Lot #	Bid \$

Shipping & Insurance

We will be pleased to arrange for shipping and transit insurance for purchases in this sale, except for lots marked or announced as "floor sale only." To expedite billing and delivery to hundreds of buyers in each sale, we use standard charges for postage and insurance under our policy. These charges are based on the package weight and mailing requirements, according to the schedule shown here. Our standard charges do not include a fee for our services, and they may be slightly more or less than the actual postage or Fedex fee. We ask all buyers to remit the invoiced amount for shipping and insurance.

Transit insurance is provided in all cases, except when the buyer has furnished us with documentation that insurance is effective under the buyer's own policy.

There will be no added insurance charge for shipments of less than \$75,000 value. Shipments valued in excess of \$75,000 may require supplemental insurance and/or special courier service, the estimated cost of which will be furnished to the buyer prior to shipment. If the buyer refuses to pay the estimated charges or furnish proof of self-insured coverage, the buyer will be responsible for picking up the lots at our office and any resulting sales tax.

Standard Shipping Charges

Weight Class	Shipping Method	Charge
Up to 2 lbs.	Fedex Envelope	\$25
Over 2 lbs.	Fedex Box	\$35 - \$50*
Outside US	Fedex	\$50 - \$100**
Bulky Lots	Fedex Ground or Express	By weight

* Up to \$75,000 value and up to 5 lbs; additional charge may apply to packages exceeding limits

** Buyers outside United States are liable for any applicable customs duty and clearance charges. An accurate declaration of contents and value will be made on all packages and import/export documents. **Siegel may refuse to ship lots to certain countries with a high risk factor.**

2/2015

Bidding Increments

The auctioneer may regulate the bidding at his discretion. However, to assist absentee bidders in establishing their maximum bids, the increments shown here will be used in most cases. We recommend that written bids conform to these increments—bids that do not will be reduced accordingly.

Bid	Increment	Bid	Increment
Up to \$200	\$10	\$7,000-20,000	\$500
\$200-500	\$25	\$20,000-30,000	\$1,000
\$500-1,000	\$50	\$30,000-70,000	\$2,500
\$1,000-3,000	\$100	\$70,000-140,000	\$5,000
\$3,000-7,000	\$250	\$140,000-300,000	\$10,000

Robert A. Siegel Auction Galleries, Inc.
Prices Realized for

Sale 1198 3/19/2019 The Dimitris Bertsimas Collection of Important Great Britain Stamps and Multiples

Lot#	Realized	Lot#	Realized	Lot#	Realized	Lot#	Realized
3001	16,500	3045	400	3085	17,000	3123	26,000
3002	5,000	3046	1,500	3086	16,000	3124	5,250
3003	475	3047	6,750	3087	550	3125	350
3004	475	3049	13,000	3088	600	3126	1,800
3005	475	3050	5,500	3089	550	3127	1,600
3006	475	3051	10,000	3090	8,500	3128	325
3007	450	3052	1,400	3091	37,500	3129	400
3008	550	3053	2,100	3092	23,000	3130	130
3009	500	3055	3,250	3093	600	3131	100
3010	475	3056	6,250	3094	900	3132	300
3011	550	3057	8,500	3096	1,400	3133	7,500
3012	1,400	3058	22,000	3097	1,200	3134	225
3015	1,600	3059	8,000	3098	275	3135	2,500
3017	25,000	3060	3,500	3099	400	3136	27,000
3018	600	3061	400	3100	4,000	3137	6,000
3019	5,250	3062	5,750	3101	250	3138	3,750
3020	5,250	3063	750	3102	225	3139	375
3021	4,750	3064	18,000	3103	400	3140	2,500
3022	4,750	3065	40,000	3104	475	3141	1,100
3023	24,000	3066	32,500	3105	325	3142	850
3024	7,500	3067	75,000	3106	6,000	3143	3,250
3026	3,000	3068	950	3107	3,000	3144	6,250
3027	1,200	3069	950	3108	9,000	3145	3,000
3028	250	3070	4,500	3109	750	3146	2,700
3029	1,500	3071	3,250	3110	1,200	3147	26,000
3032	8,500	3072	3,250	3111	1,300	3148	3,250
3033	1,600	3073	1,200	3112	6,750		
3034	1,600	3075	325	3113	15,500		
3036	6,000	3077	6,750	3114	4,250		
3037	2,700	3078	225	3115	23,000		
3038	4,750	3079	3,250	3117	3,750		
3039	300	3080	375	3118	5,750		
3040	3,000	3081	2,300	3119	800		
3041	2,500	3082	8,000	3120	2,600		
3042	400	3083	350	3121	300		
3043	1,600	3084	300	3122	9,500		