

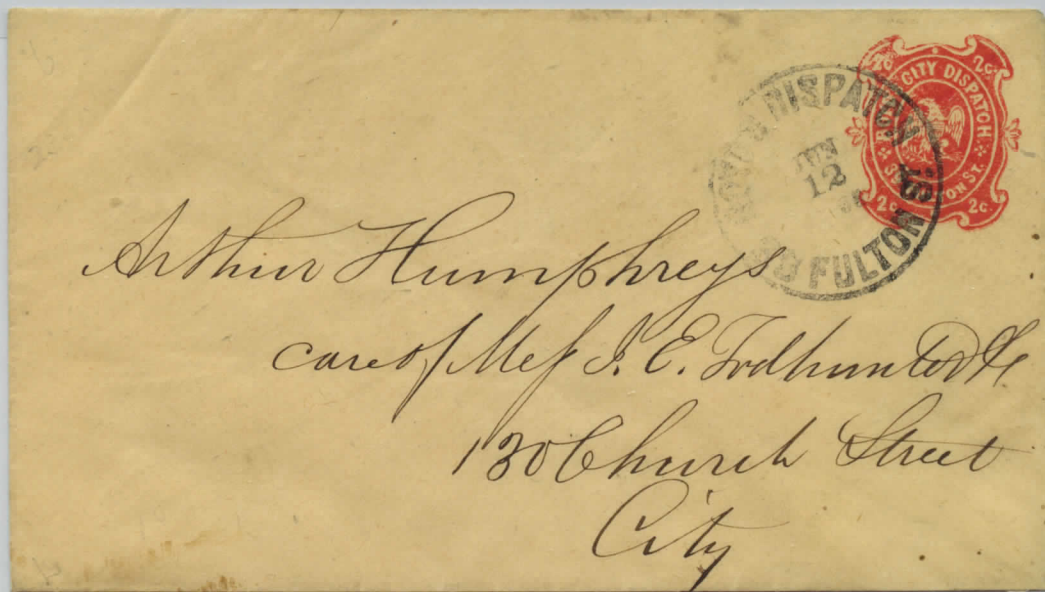
**Boyd's Dispatch, New York, N.Y.
1844-1883**



20LU4

Boyd's Dispatch formerly Boyd's City Express, produced this embossed envelope in 1864. Imprinted in the upper right hand corner, this is an unused blue Boyd's City Post embossed envelope.

Boyd's Dispatch, New York, N.Y.
1844-1883



20LU13

1867 Boyd's City Dispatch two cent red on amber (b variety) entire. The preprinted Boyd stamp is cancelled by a Boyd's black hand stamp, "Boyd's Dispatch, Jun 12, 39 Fulton St."

The "b" variety is easily identified by its thick and rough lines and letters. The lobes of the trefoils are rounded and outlined. The stamp is impressed in the upper right hand corner of the envelope.

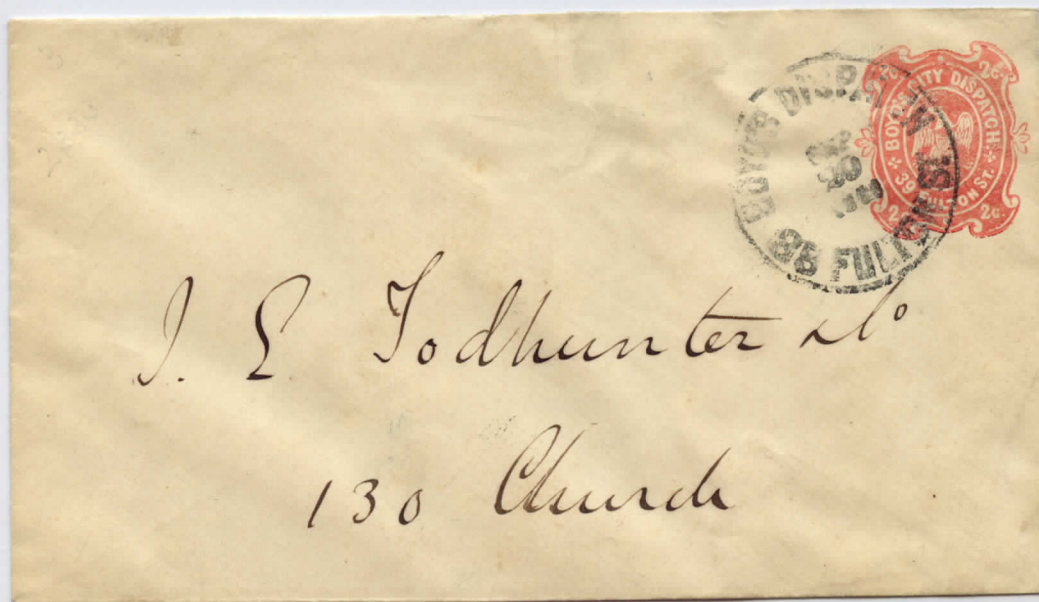
**Boyd's Dispatch, New York, N.Y.
1844-1883**



20LU15b

An unused 1867 two cent red "b" variety preprinted on a yellow Boyd's City Dispatch envelope. The "b variety" has thick and rough lines and letters, and the lobes of the trefoils are rounded and outlined. The Boyd stamp is normally impressed in upper right hand corner of envelope.

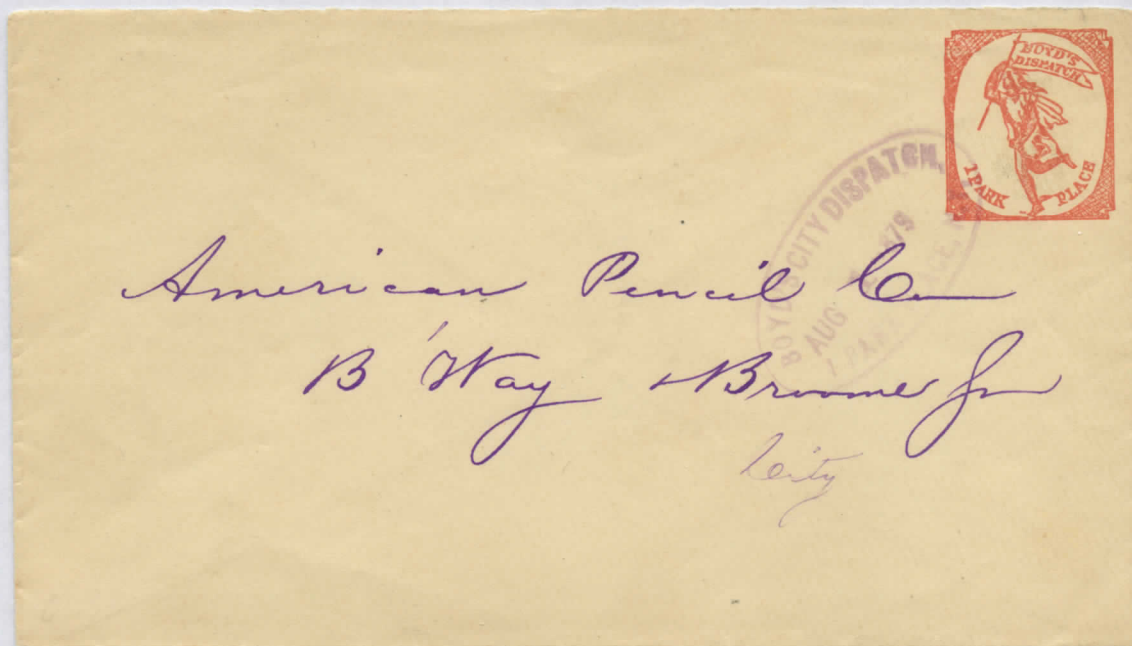
Boyd's City Dispatch, New York, N.Y.
1844-1883



20LU18a

1867 Boyd's City Dispatch two cent red on Amber entire. Boyd's Dispatch Black circular hand stamp cancellation. Wove Paper, red, cream (a, b variety) (a) Lines and letters sharp and clear. Trefoils at sides pointed and blotchy, middle leaf at right long and thick (b) Lines and letter thick and rough. Lobes of trefoils rounded and definitely outlined.

Boyd's Dispatch, New York, N. Y.
1879

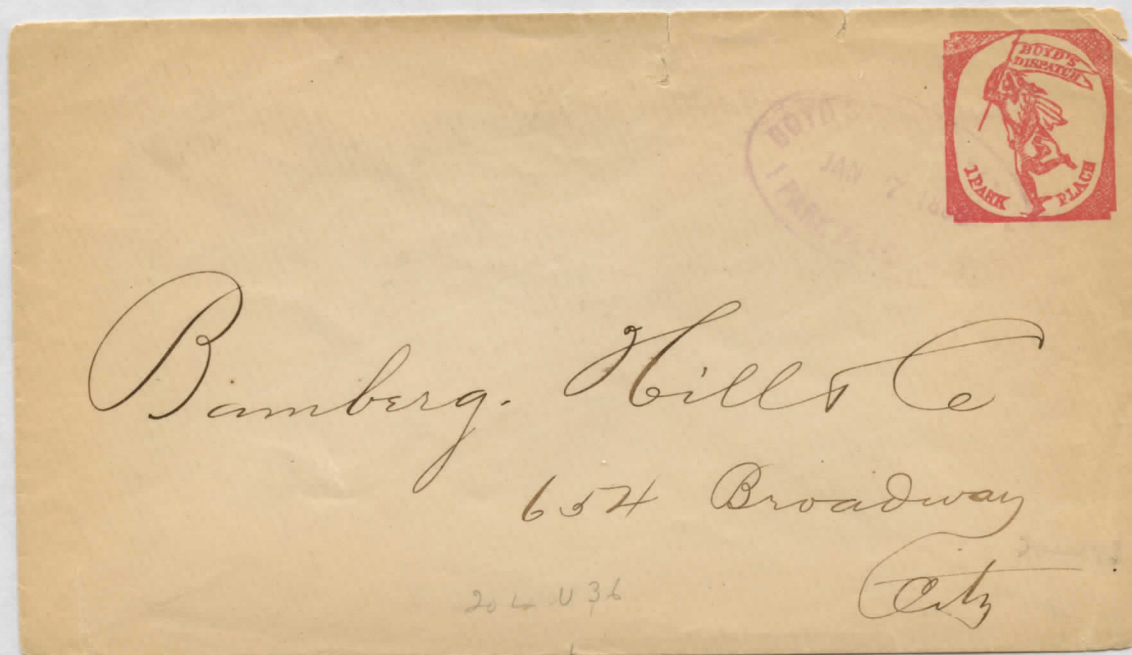


20LU36

Boyd's Dispatch, New York, N.Y., red amber on diagonally laid paper entire, addressed to "American Pencil Co". Tied by a purple hand date stamp, BOYD'S CITY DISPATCH / Aug. 1, 1879 / 1PARK PL., N.Y." (Ex Abt)

Type V: Shading omitted in banner, no period after "Dispatch". Short line extends to left from great toe.

Boyd's Dispatch, New York, N. Y.
1980

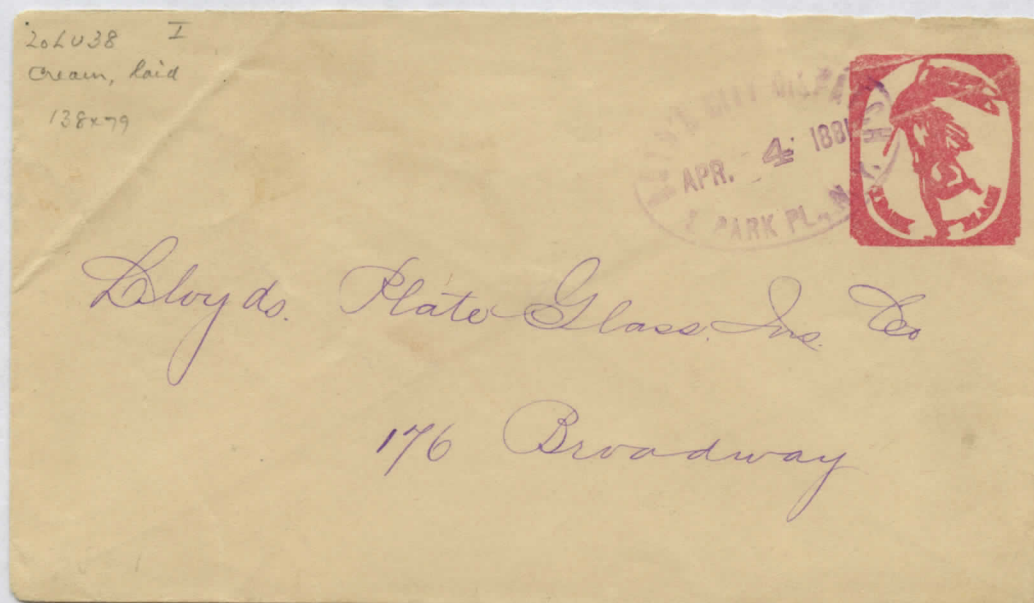


20LU37

Boyd's Dispatch, New York, N.Y., Type V, red diagonally laid paper entire, addressed to "Bimburg Hill & Co., 6574 Broadway City". Tied by a purple hand date stamp "BOYD'S CITY DISPATCH / Jan 7, 1880 / 1PARK PL., N.Y."

Type V: Shading omitted in banner, no period after "Dispatch". Short line extends to left from great toe.

Boyd's Dispatch, New York, N. Y.
1881

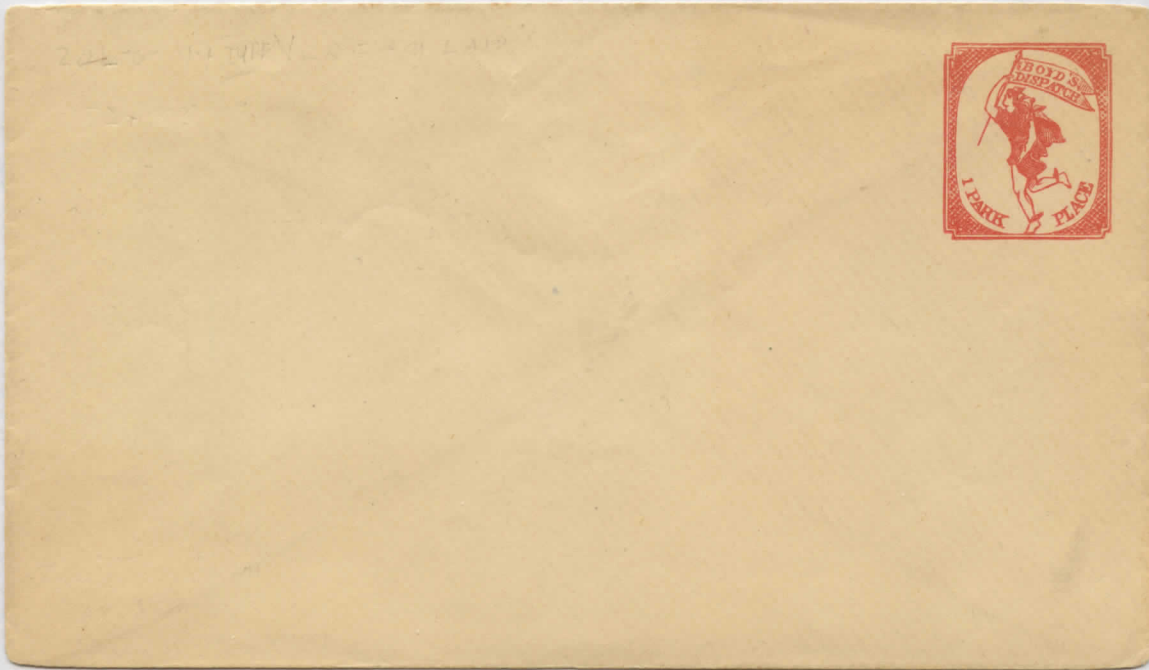


20LU38

Boyd's Dispatch, New York, N.Y., red cream on diagonally laid paper entire, addressed to "Lloyds Plate Glass Ins Co, 176 Broadway". Tied by a purple hand date stamp, BOYD'S CITY DISPATCH / APR. 4 1881 / 1PARK PL., N.Y."

Type V: Shading omitted in banner, no period after "Dispatch". Short line extends to left from great toe.

Boyd's Dispatch, New York, N.Y.
1844-1883



20LU44

1878 "Boyd's Dispatch Mercury Series", red on cream diagonally laid paper envelope. This is a Mercury Series type IV.

BOYD'S BANKING AND INSURANCE SPECIAL DISPATCH, No. 1 PARK PLACE.

JAMES BUELL, *President.*
E. H. PERKINS, JR., *Cashier.*

EDWARD TOWNSEND, *Assistant Cashier.*
PETER J. GRAHAM,

The Importers' & Traders' National Bank of New York,

New York, *4/19* 1879.



You are credited as proceeds for collection of items as stated below. Distant items may not be paid at date of this communication (we credit after waiting, as we suppose, a sufficient time to receive notice of non-payment) and may be returned unpaid, in which case they will be debited to your account.

NOTE OR BILL.	AMOUNT.	EXPENSES.	PROCEEDS.
<i>Kochler w</i>	<i>120 65</i>	<i>31</i>	<i>120 34</i>
<i>Budd r</i>	<i>27 20</i>	<i>15</i>	<i>27 05</i>

Please send Pass Book, with this notice, and withdraw unpaid collections.

To *Goldsmith & Schleisser*

Boyd's Bank Notices, 1874-1883
Importers' and Traders National Bank of New York

20LUX7

The Bank Notices are of the class of postal cards. No cancellations of postal markings were used on them. All were printed in black in the type of some of the contemporary adhesives and envelope stamps used by the post between 1874 and 1880.

Two cent 1879 black Boyd's Bank Notice (158 x 110mm). In this Mercury Series, the shading is omitted in the banner. There is no period after "Dispatch" and there is a short line to the left from the great toe.

This notice has a complete year date, and is printed on medium wove paper.