



PAID  
PACIFIC UNION EXPRESS CO.



January 5<sup>th</sup> 1869

W. W. Pierce  
728 Montz St  
San Francisco

PAID  
Wells, Fargo & Co.  
OVER OUR CALIFORNIA AND COAST ROUTES.



Mr A. C. Hendley  
Front Street  
San Francisco

## Truman & Co's Express Intenational Use to Mexico

**J.C. Truman Express from San Francisco to San Jose Mexico with Auxillary Marking Hand Stamp of "Collect" in Rectangle Printed in Blue with notation of 7 in blue pencil to make up the international rate. Rare International Use**

**San Francisco to La Paz, MEXICO – October 28, 1866**



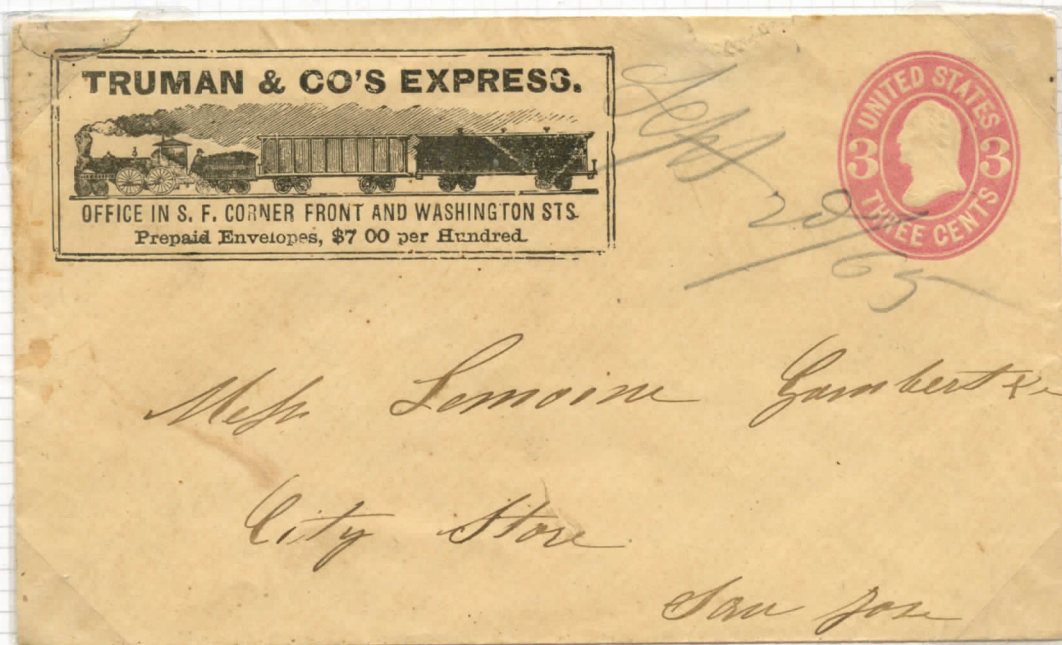
**Addressed to "Mr. Ezyckiel Moses, Lord of Ship Washington, Captian Berry, care of american council La Paz, Lower California ( Baja Mexico)"**



## Truman & Co's Express

*James C. Truman began his J.C. Truman Express in January 1864 soon after arriving in San Francisco. He took Chapman as a partner on February 16, 1864. Chapman withdrew in 1865 and Truman formed Truman & Co's Express. It operated from San Francisco to San Jose by rail and to Watsonville and Santa Cruz until 1868.*

San Francisco to San Jose, September 20, 1865, Manuscript Pencil Date



Truman & Co's Express, train illustrated frank portraying a more modern train, with "Office in S.F. Corner Front and Washington Sts, Prepaid Envelopes \$7.00 per Hundred

PAID  
Wells Fargo & Co.  
OVER OUR CALIFORNIA AND COAST ROUTES.



Miss Emily Hoffman  
40 Franklin St  
Baltimore  
Md

PAID  
Hammer & Co's  
EXPRESS



Return to \_\_\_\_\_ days.  
if not delivered within \_\_\_\_\_ days.

Mr Edmund Cross  
North San Juan  
Paucau Co Cal

Return to \_\_\_\_\_

EXK

1002





Mrs Matilda Atwood  
Brownsville  
Maine

to