

WORLDWIDE STAMPS — & — POSTAL HISTORY



INTERNATIONAL

Robert A. Siegel

IN ASSOCIATION WITH CHARLES F. SHREVE

Sale 1229 — Monday, December 14, 2020, at 1:30 p.m.

Worldwide Stamps and Postal History



MONDAY, DECEMBER 14

Afternoon Session (lots 1-345) at 1:30 p.m.

British Commonwealth:

Great Britain including Offices in China ..lots	1-20
Antigua thru Bushire	21-40
Canadian Provinces and Canada	41-73
Cape of Good Hope thru Hong Kong	74-93
India thru Nyasaland	94-116
Rhodesia thru South West Africa	117-132
Straits Settlements thru Zululand	133-140

Worldwide:

Algeria thru China	lots 141-189
Colombia thru Faroe Islands	190-212
France and French Offices, French Colonies..	213-288
German East Africa thru Guatemala	289-310
Hungary thru Thailand	311-332
Worldwide Balances and Accumulations	333-340
Worldwide Cover Balances	341-345

Featuring

Select Great Britain and British Commonwealth

China, including a newly discovered Imperial Post Office Remittance Certificate

Exceptional Quality French Colonies from an old-time European Collection

First Issue Guatemala imperforate multiples, including several rarities

Numerous Collections and Large Lots arranged alphabetically by country throughout the sale (all with PDFs or videos of contents)

Most lots offered without reserves

Lots will be available for viewing at our New York offices by appointment only

Lots are sold subject to an 18% buyer's premium and any applicable sales tax or customs duty

Please carefully read the Conditions of Sale before bidding

I N T E R N A T I O N A L
Robert A. Siegel
IN ASSOCIATION WITH CHARLES F. SHREVE

6 WEST 48TH STREET, 9TH FLOOR, NEW YORK, N.Y. 10036
Phone (212) 753-6421 • Fax (212) 753-6429 • Email: stamps@siegelauctions.com

Catalogues, internet bidding, resources, archives and the Siegel Encyclopedia at
siegelinternational.com



INTERNATIONAL
Robert A. Siegel
 IN ASSOCIATION WITH CHARLES F. SHREVE

6 WEST 48TH STREET, 9TH FLOOR, NEW YORK, N.Y. 10036
 Phone (212) 753-6421 • Fax (212) 753-6429 • Email: stamps@siegelauctions.com
 siegelauctions.com



Scott R. Trepel
 President
 strepel
 @siegelauctions.com



John P. Zuckerman
 Senior Vice President
 jzuckerman
 @siegelauctions.com



Corey Long
 Senior Vice President
 clong
 @siegelauctions.com

Siegel International
 Dallas (214) 754-5991



Charles F. Shreve
 Director, Siegel International
 charles
 @siegelauctions.com



Samantha Aragon
 VP, Financial
 samantha
 @siegelauctions.com



Gina Cashia
 VP, Operations
 gina
 @siegelauctions.com



Emily Chun
 Operations
 emily
 @siegelauctions.com



Andrew Tittle
 VP, Siegel International
 andrew
 @siegelauctions.com



Chris Anderson
 International Specialist
 chris
 @siegelauctions.com

Scott R. Trepel Principal Auctioneer (licensed by NYC Dept. of Consumer Affairs, #795952)

Information for Bidders

Bidding

The following means are available for placing bids:

- 1) LIMITED PUBLIC ATTENDANCE AT AUCTION :** Due to COVID-19 restrictions, attendance will be limited and by prior approval. Live bidding will be facilitated mail, email, phone or internet.
- 2) Live Internet Bidding:** Instructions for participating as a Live Internet Bidder are provided on the page opposite.
- 3) Phone Bidding:** Bidders can be connected to the sale by phone and bid through a member of staff. Requests for phone bidding are subject to approval (please contact our office at least 24 hours before the sale). A signed Bid Form is required.
- 4) Absentee Bids.** All bids received in advance of the sale, either by mail, fax, phone, e-mail or internet, are Absentee Bids, which instruct the auctioneer to bid up to a specific amount on one or more lots in the sale. Absentee Bids sent by phone, fax or email should arrive at least one hour prior to the start of the sale session. Bids entered through Live Internet Bidding will be visible to the auctioneer during the sale. Written bids should be entered legibly on the Bid Form in the sale catalogue. Email and internet bids should be carefully typed and double-checked. All new bidders must provide references. We recommend calling or e-mailing to confirm that Absentee Bids sent by mail, fax or email have been received and entered.

Presale Viewing by Appointment Only

To protect the health of our clients and staff, presale viewing will be arranged by appointment only and with mandatory protective measures. To make an appointment and receive instructions for pre-sale viewing, please contact us at (212) 753-6421 or by email. We reserve the right to refuse, cancel or postpone a request or appointment for medical reasons.

Expert Certification

Individual items offered without a certificate dated within the past five years may be purchased subject to independent certification of genuineness and our description. **Please refer to the Conditions of Sale and Grading Terms for policies governing certification.**

Shipping and Delivery

Procedures and charges for shipping lots are printed on the back of the Bid Form. **Bidders are responsible for all prescribed shipping charges and any applicable sales tax or customs duties.**

Price Realized

Prices realized are sent with each invoice. Bidders with email will receive a Bid Results report after the sale. Session results are posted immediately to **siegelauctions.com**

Live and Absentee Internet Bidding at Siegel

**ALL INTERNET BIDDING IS NOW HANDLED DIRECTLY FROM THE SIEGEL WEBSITE
SALES ARE NO LONGER LISTED ON STAMP AUCTION NETWORK**

**REGISTERED BIDDERS MAY LEAVE BIDS IN ADVANCE OF THE SALE
AND BID LIVE DURING THE AUCTION**

DOWNLOAD THE SIEGEL APP FROM THE APPLE OR GOOGLE PLAY STORES

This step-by-step guide will instruct you how to register and use the bidding interface.

Start by following the simple steps to become a registered internet bidder.

Once you have been approved for bidding, you can leave bids in advance of the sale, listen to the auction and place bids live with the click of a mouse.

Registering with Siegel Auction Galleries

To bid, you must be registered and approved by Siegel.

To decide what you need to do, choose the description below that best fits you.



**I've already registered with Siegel and
have been approved by Siegel for internet bidding**

Internet bidding works by allowing registered bidders to observe and place bids, either before the sale or in real-time during the auction.

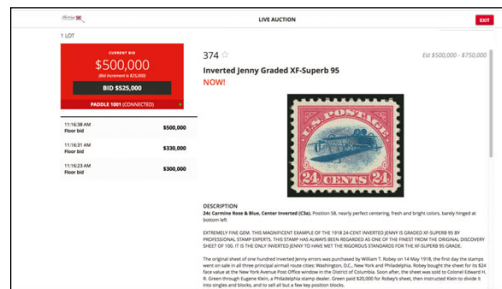
Live Internet Bidding will work with any browser on both PC and Mac operating systems, or with our app..

Before bidding by internet for the first time, we recommend observing an auction in progress. This will help you develop a feel for the sale tempo and bidding interface.

Log in and participate in the auction at bid.siegelauctions.com

When you're logged on as an internet bidder, the bidding interface shows a photo and description of the lot, the current bid (and your bidding status), options for placing competitive bids and buttons with bid increments.

- After you click on a bid amount, the auctioneer is immediately notified of your bid.
- Retracting a bid is not acceptable, so please bid carefully.
- You can track prior realizations from the bidding screen.



I'm a Siegel client, but I'm not registered to bid live
Go to bid.siegelauctions.com and click on **Login** at the top. Then click on the link for **Sign Up Now**. We will match your new signup to your existing account.

I want to become a Siegel client and bid in auctions
Go to bid.siegelauctions.com and click on **Login** at the top. Then click on the link for **Sign Up Now**. You will need to register and provide trade and banking references.

"System Down" or "Lost Connection" events do occasionally happen.

If you have any problems with Live Internet Bidding please call 212-753-6421 for immediate assistance.

Conditions of Sale (please read carefully before bidding)

THE PROPERTY IN THIS CATALOGUE WILL BE OFFERED AT PUBLIC AUCTION BY ROBERT A. SIEGEL AUCTION GALLERIES, INC. ("GALLERIES") ON BEHALF OF VARIOUS CONSIGNORS AND ITSELF OR AFFILIATED COMPANIES. BY BIDDING ON ANY LOT, WHETHER DIRECTLY OR THROUGH A THIRD PARTY, IN PERSON, BY TELEPHONE, FACSIMILE, INTERNET OR BY ANY OTHER MEANS, THE BIDDER ACKNOWLEDGES AND AGREES TO ALL OF THE FOLLOWING CONDITIONS OF SALE.

1. The highest bidder acknowledged by the auctioneer shall be the buyer. The term "final bid" means the last bid acknowledged by the auctioneer, which is normally the highest bid offered. **The purchase price payable by the buyer will be the sum of the final bid and a commission of 18% of the final bid ("buyer's premium"), together with any sales tax, use tax or customs duties due on the sale.**

2. The auctioneer has the right to reject any bid, to advance the bidding at his discretion and, in the event of a dispute, to determine the successful bidder, to continue the bidding or to reoffer and resell the lot in dispute. The Galleries' record of the final sale shall be conclusive.

3. All bids are per numbered lot in the catalogue unless otherwise announced by the auctioneer at the time of sale. The right is reserved to group two or more lots, to withdraw any lot or lots from the sale, or to act on behalf of the seller. The Galleries will execute bidding instructions on behalf of clients, but will not be responsible for the failure to execute such bids or for any errors in the execution of such bids.

4. **Lots with numbers followed by the symbol ° are offered subject to a confidential minimum bid ("reserve"), below which the lot will not be sold. The absence of the symbol ° means that the lot is offered without a reserve. If there is no reserve, the auctioneer has sole discretion to establish a minimum opening bid and may refuse an offer of less than half of the published estimate. Any lot that does not reach its reserve or opening bid requested by the auctioneer will be announced as "passed" and excluded from the prices realized lists after the sale. The Galleries may have a direct or indirect ownership interest in any or all lots in the sale resulting from an advance of monies or goods-in-trade or a guarantee of minimum net proceeds made by the Galleries to the seller.**

5. Subject to the exclusions listed in 5(A), the Galleries will accept the return of lots which have been misidentified or which have obvious faults that were present when the lot was in the Galleries' custody, but not so noted in the lot description. **All disputed lots must be received by the Galleries intact with the original packing material within 5 days of delivery to the buyer but no later than 30 days from the sale date.**

(5A) **EXCLUSIONS:** The following lots may not be returned for any reason, or may not be returned for the reasons stated: i) lots containing 5 or more items; ii) lots from buyers who registered for the pre-sale exhibition or received lots by postal viewing, thereby having had the opportunity to inspect them before the sale; iii) any lot described with "faults," "defects" or a specific fault may not be returned because of any secondary fault; iv) photographed lots may not be returned because of centering, margins, short/nibbed perforations or other factors shown in the illustrations; v) the color of the item does not match the color reproduction in the sale catalogue or website listing; vi) the description contains inaccurate information about the quantity known or reported; or vii) a certification service grades a stamp lower than the grade stated in the description or on an accompanying certificate.

6. Successful bidders, unless they have established credit with the Galleries prior to the sale, must make payment in full before the lots will be delivered. Buyers not known to the Galleries must make payment in full within 3 days from the date of sale. **The Galleries retains the right to demand a cash deposit from anyone prior to bidder registration and/or to demand payment at the time the lot is knocked down to the highest bidder, for any reason whatsoever.** In the event that any buyer refuses or fails to make payment in cash for any lot at the time it is knocked down to him, the auctioneer reserves the right to reoffer the lot immediately for sale to the highest bidder. **Credit cards (Visa, Mastercard and Discover only) can be accepted as payment but will be subject to a 3% non-refundable Convenience Fee, which will be added to the total of the entire invoice (including hammer price, buyer's premium, shipping and transit insurance charges and any applicable taxes). The buyer waives the right to dispute all credit card charges.**

7. If the purchase price has not been paid within the time limit specified above, nor lots taken up within 7 days from the date of sale, the lots will be resold by whatever means deemed appropriate by the Galleries, and any loss incurred from resale will be charged to the defaulting buyer. **Any account more than 30 days in arrears will be subject to a late payment charge of 1½% per month as long as the account remains in arrears. Any expenses incurred in securing payment from delinquent accounts will be charged to the defaulter.** A fee of \$250.00 per check will be charged for each check returned for insufficient funds.

8. All lots are sold as genuine. **Any lot accompanied by a certificate issued by The Philatelic Foundation, British Philatelic Association, Royal Philatelic Society of London or any other authority recognized by the A.I.E.P. in a specific area of expertise, and dated within 5 years of the sale date, is sold "as is" and in accordance with the description on the certificate. Such lots may not be returned for any reason, including but not limited to a contrary certificate of opinion.** Buyers who wish to obtain a certificate for any item that does not have a certificate (dated as above) may do so, provided that the following conditions are met: (i) the purchase price must be paid in full, (ii) the item must be submitted to an acceptable expertizing committee with a properly executed application form within 21 days of the sale, (iii) a copy of the application form must be given to the Galleries, (iv) the Galleries retains the right to resubmit the item for reconsideration, without time limit or other restrictions, for the purpose of obtaining a satisfactory opinion, (v) lots submitted for certification will be considered cleared 90 days from the date of sale, whether or not a certificate has been issued, unless the Galleries issues written approval of a further extension of return privileges, and (vi) in the event the lot is determined to be misidentified or misdescribed, pursuant to 5 and 5(A) of these Conditions, the Galleries will issue a refund to the buyer for the full purchase price and actual certification fees up to \$800.00, but the reimbursement for certificate fees (and related costs) shall not exceed 10% of the hammer price of the lot.

9. Until paid for in full, all lots remain the property of the Galleries on behalf of the seller.

10. Agents executing bids on behalf of clients will be held responsible for all purchases made on behalf of clients unless otherwise arranged prior to the sale.

11. The buyer assumes all risk for delivery of purchased lots and agrees to pay for prescribed shipping costs. **Buyers who receive lots in the U.S. are obligated to pay whatever sales tax or compensating use tax might be due, at any time, and buyers outside the U.S. are responsible for all customs duties.**

12. **The bidder consents that any action or proceeding against it may be commenced and maintained in any court within the State of New York or in the United States District Court for the Southern District of New York, that the courts of the State of New York and United States District Court for the Southern District of New York shall have jurisdiction with respect to the subject matter hereof and the person of the bidder. The bidder agrees not to assert any defense to any action or proceeding initiated by Galleries based upon improper venue or inconvenient forum. The bidder agrees that any action brought by the bidder shall be commenced and maintained only in a Federal Court in the United States District Court for the Southern District of New York or the State Court in the county in which Galleries has its principal place of business in New York. The bidder agrees not to use a public conflict resolution service and not to use any form of social media to publish comments or information about the Galleries and its employees which might harm the Galleries' reputation or business. These Conditions of Sale shall be governed by and construed in accordance with the substantive laws of the State of New York, and shall constitute an agreement that shall be binding on the parties, and their respective heirs, administrators, distributees, successors and assignees.**

SCOTT R. TREPEL, Principal Auctioneer

Auctioneer's License No. 795952

N.Y.C. Department of Consumer Affairs

80 Lafayette Street, New York, N.Y. 10013

Telephone (212) 577-0111

Revised 5/2018

Grades, Abbreviations and Values Used in Descriptions

Grades and Centering

Our descriptions contain detailed information and observations about each item's condition. We have also assigned grades to stamps and covers, which reflect our subjective assessment. For stamps, the margin width, centering and gum are described and graded according to generally-accepted standards (an approximate correlation to numeric grades is provided at right). Although we believe our grades are accurate, they are not always exactly aligned with third-party grading terms or standards for all issues. **A lot may not be returned because a certification service grades a stamp lower than the grade stated in the description. Information from the P.S.E. Stamp Market Quarterly and P.S.E. Population ReportSM is the most current available, but lots may not be returned due to errors or changes in statistics or data.**

Extremely Fine Gem (90-100): The term “Gem” describes condition that is the finest possible for the issue. This term is equivalent to “Superb” used by grading services.







Extremely Fine (80-90): Exceptionally large/wide margins or near perfect centering.

Very Fine (70-85): Normal-size margins for the issue and well-centered with the design a bit closer to one side. “Very Fine and choice” applies to stamps that have desirable traits such as rich color, sharp impression, freshness or clarity of cancel.

Fine (60-70): Smaller than usual margins or noticeably off center. Pre-1890 issues may have the design touched in places.

Very Good (below 60): Attractive appearance, but margins or perforations cut into the design.

Guide to Gum Condition

Gum Categories:	MINT N.H.	ORIGINAL GUM (O.G.)				NO GUM
	 Mint Never Hinged <i>Free from any disturbance</i>	 Lightly Hinged <i>Faint impression of a removed hinge over a small area</i>	 Hinge Mark or Remnant <i>Prominent hinged spot with part or all of the hinge remaining</i>	 Part o.g. <i>Approximately half or more of the gum intact</i>	 Small part o.g. <i>Approximately less than half of the gum intact</i>	 No gum <i>Only if issued with gum</i>
Catalogue Symbol:	★ ★	★	★	★	★	(★)
PRE-1890 ISSUES	<i>Pre-1890 stamps in these categories trade at a premium over Scott value</i>			Scott Value for “O.G.”		Scott “No Gum” Values thru No. 218
1890-1935 ISSUES	Scott “Never Hinged” Values for Nos. 219-771	Scott Value for “O.G.” (Actual value will be affected by the degree of hinging)		Disturbed Original Gum: Gum showing noticeable effects of humidity, climate or hinging over more than half of the gum. The significance of gum disturbance in valuing a stamp in any of the Original Gum categories depends on the degree of disturbance, the rarity and normal gum condition of the issue and other variables affecting quality. For example, stamps issued in tropical climates are expected to have some		
1935 TO DATE	Scott Value for “Unused”					

Covers

Minor nicks, short edge tears, flap tears and slight reduction at one side are normal conditions for 19th century envelopes. Folded letters should be expected to have at least one file fold. Light cleaning of covers and small mends along the edges are accepted forms of conservation. Unusual covers may have a common stamp with a slight crease or tiny tear. **These flaws exist in virtually all 19th century covers and are not always described. They are not grounds for return.**

Catalogue Values and Estimates

For our International auctions, the number range in the right-hand column (e.g. E. 1,000-1,500) is our valuation in U.S. dollars. Our estimates tend to be conservative, as the vast majority of lots sell in the estimate range or above. These are not start prices, and if there is a reserve on a lot the reserve will never exceed the low end of the estimate range. We have quoted the Scott Catalogue value (if applicable) at the end of the description, along with any other appropriate catalogue values such as Stanley Gibbons (SG), Michel, Yvert, Unitrade, etc.).

Because of certain pricing inconsistencies in the *Scott Catalogue*—for example, blocks that have no gum, the absence of premiums for Mint N.H. items, etc.—we cannot guarantee the accuracy of values quoted for multiples, specialized items and collection lots. We generally try to be conservative, but buyers may not return a lot because of a discrepancy in catalogue value due to Scott pricing inconsistencies.

Symbols and Abbreviations (see chart above for gum symbols)

⊞	Block	E	Essay	pmk.	Postmark	No.	Scott Catalogue Number
⊞	Cover	P	Proof	cds	Circular Datestamp	hs	Handstamp
FC	Fancy Cancel	TC	Trial Color Proof	var.	Variety	ms.	Manuscript

NEVER MISS OUT AGAIN

REGISTER WITH THE MOST DETAILED WANT LIST IN PHILATELY

Whether you collect Caroline Island covers, used Great Britain or British Africa, you never have to miss out again. Register at our website, and receive email notifications when something matching your interests is part of an upcoming auction. You can also see what we have sold in the past in your area of interest. Just follow the steps below.

Step 1. Register for an account at our website.

You will be sent an email with a link to activate the account. This ensures notifications are received.

Note: You will also log in here once you've created your account.

Step 2. Go to the My Searches tab and select New Search

This will take you to the Power Search page, where you can create your searches.

Note: Once you've created some searches, you can review them and run them from this page.

There is also a short video tutorial at the bottom of this page showing how to create your want list.

Step 3. Create your search

Select your search criteria on this page, following the steps below.

Note: you can skip steps if you want to create a broader list

4. If you want a specific country then select it under the Issue/Country field.

Note: you can go right to this step after selecting Area if you are looking for a specific country.

5. Looking for just Penny Blacks? Use the Catalogue # field to restrict your search to a specific stamp (by Scott no.)

6. Use the symbol field to narrow your list to used only, covers only, etc.

8. Name and save your search. It will then appear on your My Searches page.

1. Select the general Area. There are five to choose from.

2. If you want a broad criteria such as all British Commonwealth then use the Sub Area field.

3. If you want a slightly more specific area such as British Africa, then use the General field.

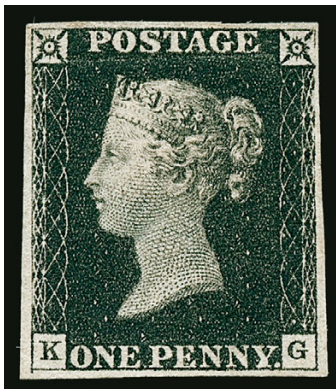
7. Use the Key Word to pick up on any word in descriptions

Use the Help button for ideas about creating lists and for a video tutorial.

AFTERNOON SESSION (LOTS 1-345)
 MONDAY, DECEMBER 14, 2020, AT 1:30 P.M.

WORLDWIDE STAMPS AND POSTAL HISTORY

GREAT BRITAIN AND BRITISH COMMONWEALTH



1



2



3EX

- 1 (★) **1840, 1p Black (1; SG 2).** Plate 1, lettered K-G, unused (regummed), large to ample margins all around, intense shade, minute repaired pinhole at top and light horizontal crease, Very Fine appearance, with 2020 P.T.S. certificate, catalogued as original gum, Scott \$12,500.00, SG £12,500 E. 500-750
- 2 ★ **1840, 1p Black (1; SG 2).** Plate 2, lettered I-H, original gum, large margins to touching at top left, deep shade, horizontal crease, Fine appearance, Scott \$12,500.00, SG £12,500 E. 500-750
- 3 (★) **1840, 1p Black (1; SG 2).** Three singles, **two unused (regummed)** and one with cleaned cancel, unused from Plate 4, lettered E-K, large margins incl. part of adjoining stamp at right to clear at bottom left, and Plate 7, lettered Q-E, large margins to touching at sides, both with barest trace of toning, used example from Plate 4, lettered F-I, large margins to touching at bottom, Fine, each with 2020 P.T.S. certificate, catalogued as original gum and used, Scott \$26,650.00, SG £26,900.....(Photo Ex/ Website PDF) E. 750-1,000

- 4 **1840, 2p Blue (2; SG 4).** Plate 1, lettered K-A, four large margins, rich color and a deeply etched impression, black Maltese Cross cancel, Very Fine, Scott \$950.00, SG £975 E. 200-300



4



5



6



7

- 5 ★ 1841, 1p Red Brown, Bluish, (3; SG 8). Alphabet II (SG Specialised B2), block of four, lettered D-I/E-J, original gum, some gum flaking may cause a tiny thin spot, large to full margins, gorgeous rich color and a well-incised impression, horizontal creases between stamp and in bottom pair, Very Fine appearance, Scott \$3,200.00, SG £3,500 E. 300-400
- 6 (★) 1862, 3p Pale Rose (37; SG 77). Plate 2, lettered O-F, unused (regummed), attractive shade, uncommonly well-centered, Very Fine, with 2020 P.T.S. certificate, catalogued as original gum, Scott \$2,500.00, SG £2,700 E. 300-400
- 7 ★ 1862, 9p Straw (40; SG 86). Plate 2, lettered F-C, slightly sweated original gum, h.r., rich color, certificate notes some toned perforations which are trivial, Very Fine appearance, with 2020 P.T.S. certificate, Scott \$3,900.00, SG £5,800 E. 400-500



8

- 8 (★) 1870, 1/2p Rose (58; SG 49). Plate 9, lettered N-S, unused (regummed), slight overall soiling, otherwise Fine, plate 9 is by far the rarest plate of the half-penny stamp, with 2017 P.T.S. certificate, catalogued as original gum, Scott \$6,000.00, SG £5,000 E. 500-750

- 9 (★) 1862, 3p Bright Carmine Rose, Error of Watermark, Three Roses and a Thistle (SG 76a). Plate 2, lettered T-F, unused (no gum), strong color, certificate notes peripheral staining and surface faults, all of which are quite minor

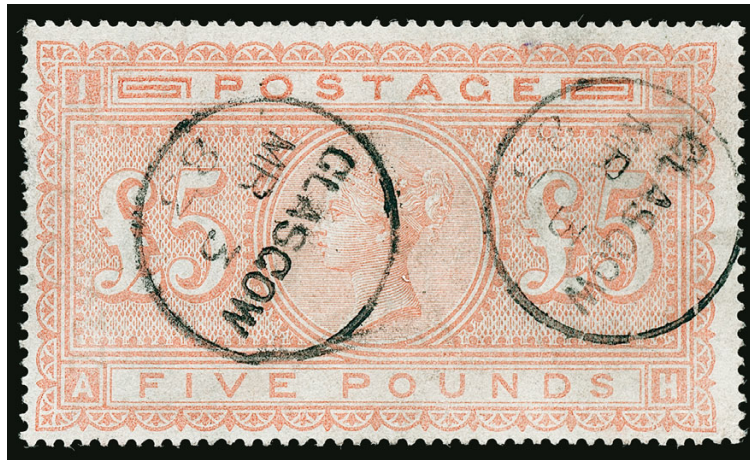
FINE. A VERY RARE UNUSED EXAMPLE OF THE 1862 3-PENCE WITH THE THREE ROSES AND THISTLE WATERMARK ERROR.

This error can only occur on position T-F, where an extra rose was substituted for the shamrock on the normal emblems watermark.

With 2008 B.P.A. certificate. Not priced in unused condition. Used price is £5,500 E. 1,500-2,000



9



10

- 10 **1882, £5 Pale Dull Orange on Bluish (93a; SG 133).** Plate 1, lettered A-H, Glasgow Mar. 3, 1883 circular datestamp, slight overall soiling and couple light thins, treated to remove some manuscript numerals causing discharge of paper bluing, still a Fine and presentable example of the scarce £5 Orange on Bluish, with 2020 B.P.A. certificate, Scott \$15,500.00, SG £12,500..... E. 1,000-1,500

- 11 **1884, 5sh Rose, Watermark Inverted (SG 180Wi).** Lettered B-H, perfect strike of "Red Lion St. SP 19 91" circular datestamp, exceptionally rich color on bright paper

VERY FINE AND CHOICE. A SUPERB EXAMPLE OF THE 5-SHILLING ROSE WITH WATERMARK INVERTED. EASILY ONE OF THE FINEST OF THE LESS THAN HALF A DOZEN EXAMPLES THOUGHT TO EXIST.

The example offered here is an unrecorded new discovery and making its debut to the market after having been found by our specialists in an old-time European collection.

With 2020 B.P.A. certificate. SG £12,500
..... E. 4,000-5,000

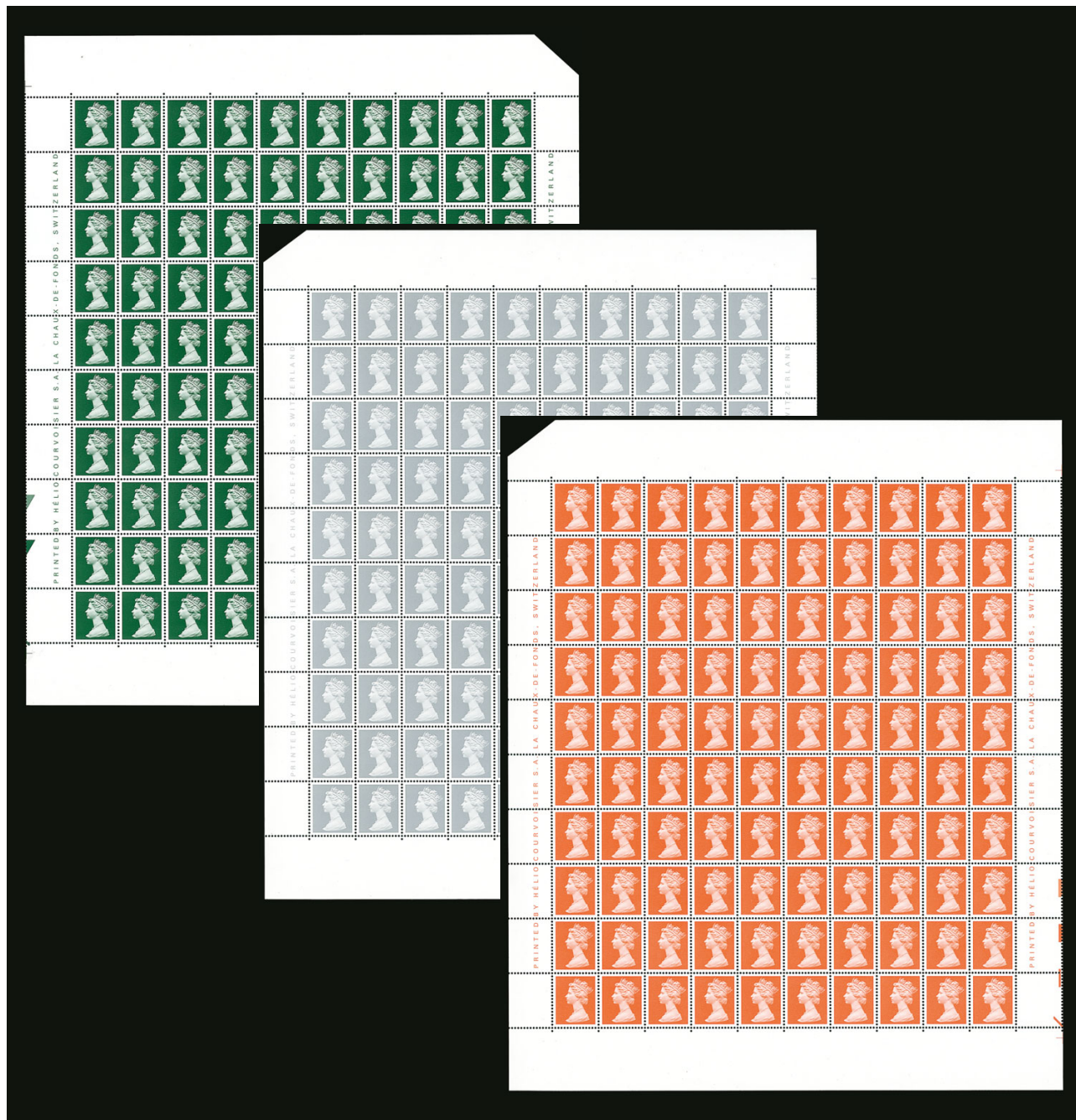


11



12

- 12 **1891, £1 Brown Violet (123; SG 186).** Lettered O-D, Ipswich 1889 circular datestamp and boxed G.P.O. cancels, rich color, Very Fine, an attractive and fault-free example of this high value, with 2004 Raybaudi certificate, Scott \$4,400.00, SG £4,500.....
..... E. 1,000-1,500



13

- 13 ★★田 **1997, Undenominated Machin Head Panes.** Three Mint N.H. panes of 100, first in Deep Green (used for 2p) with printing no. 002908, second in Light Gray (used for 29p) and last in Flame Red (used for 1st class rate), the last two with no printing no., each with top corner of sheet clipped

VERY FINE AND SCARCE COMPLETE PANES OF THESE UNDENOMINATED MACHIN HEADS STAMPS. A KEY ITEM FOR THE MACHIN SPECIALIST.

The Machin definitives were originally printed by way of lithography for the Royal Mail. It was eventually decided that these definitives should be printed by gravure. The House of Questa in London did not have the capability of printing in gravure. Therefore, these were printed by Courvoisier based in Switzerland and bear the company name in the side selvage. While it is not known how many sheets were printed or ultimately released, there is likely only a small handful available..... E. 3,000-4,000



14



15

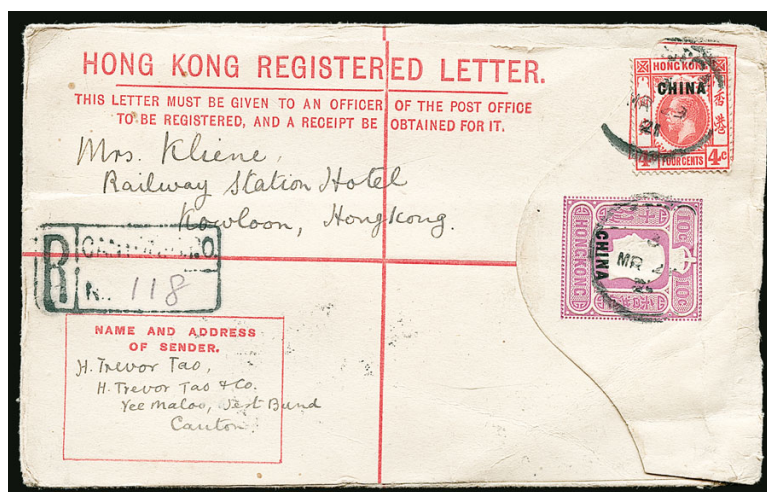
- 14 (★) **1885, 1sh Green I.R. Official (O7; SG O7).** Lettered D-B, unused (regummed), strong color for this, certificate states toned, but that is very minor, overall a Fine and collectable example of this rare stamp, with 1999 B.P.A. certificate, Scott \$6,250.00, SG £6,000 E. 400-500
- 15 (★) **1885, 5sh I.R. Official, Raised Period after "R" (O8b; SG O9a).** Lettered H-A, unused (no gum), rich color, couple light creases, Very Fine appearance, a rare variety on this Official high value, with 1991 B.P.A. certificate, Scott \$10,500.00, SG £14,000..... E. 750-1,000
- 16 **Great Britain Collection.** To the 1950s on album pages, 19th Century mostly used, with 26 Penny Blacks, including one on cover, other useful Line Engraved, extensive Surface Printed, with different shades and plates, as well as several of the Shilling and Pound values, 20th Century contains both unused and used, Officials including the 1892 £1 Green "I.R.", also some Free Franks and Great Britain stamps used abroad, mixed condition, though much of the 20th Century is Fine-Very Fine(Website Highlights PDF) E. 4,000-5,000
- 17 **Great Britain Collection.** To 2004 in seven Lighthouse hingeless albums, early issues used, includes five Penny Blacks, higher cataloguing Surface Printed, all three Queen Victoria "long" £1 values, some unused including a £1 P.U.C., starting in the 1960s it is mainly unused, including a solid run of Mint N.H. modern stamps, also Postage Dues, Officials, and Channel Islands (Jersey and Guernsey to the 1980s, Isle of Man to 1999), mixed condition, particularly on the earliest issues, high total catalogue value.....(Website Highlights PDF) E. 2,000-3,000

BRITISH OFFICES IN CHINA



18

- 18 **Offices in China, 1917, 1c Brown, Crown Broken at Right (SG 1b).** Tied on piece, along with 4c and 20c (latter creased) by Shanghai Br. P.O. Ja 6 17 circular date stamp, rich color, Fine, SG £400 E. 200-300



19

- 19 ☒ **Offices in China, 1917, 4c Scarlet (3; SG 3).** Tied by Canton March 29, 1921 datestamp on 10c Registered Envelope to Hong Kong, registry handstamp with ms. no. 118, Hong Kong backstamps (March 30), opened at right, few minor cover corner bends, Fine and scarce use paying the 4c local rate and 10c registry E. 300-400



20 front and back

- 20 ☒ **Offices in China, 1917-21, 50c Black on Emerald, \$1.00 Blue & Violet on Blue (11-12; SG 12b, 13).** Tied along with 1c (No. 1) and two 20c (No. 8), all three on reverse, by Shanghai G.P.O. Nov. 3, 1921 oval registered datestamps on 10c Registered Envelope **to France**, and redirected back to Shanghai (5-2-22 backstamp), registry handstamp with ms. no. 32, two insured labels, French receiving backstamp (Dec. 17)

BRITISH COMMONWEALTH

- 21 ★ **ANTIGUA, Unused 19th Century Assortment.** On stockcards, 1862-1887, over 50 stamps and a block of 24 of the 1p Red, includes two 1862 6p Blue Green, later 1p and 6p stamps, including Scott No. 11 with A.P.S. certificate, Tablet issues to 1sh, a few varieties such as inverted watermarks, majority with original gum, a few small flaws, but overall in better condition than usually found, many Fine-Very Fine...**(Website PDF)** E. 750-1,000



22

- 22 ★田 **TASMANIA, 1864-91, 6p Red Lilac, Perf 12 (32; SG 76).** Block of six, original gum, lightly hinged, wonderfully well-centered, bold color, gum with slight toned band, still Very Fine, a particularly scarce and attractive multiple, catalogued as singles, Scott \$1,020.00, SG £1,140 E. 400-500



23

- 23 ★★田 **TASMANIA, 1878, 8p Violet Brown, "Specimen" Overprint (62S; SG 158s).** Mint N.H. bottom plate no. 1 block of twelve comprising the two bottom rows of pane, wing margin at right, deep rich color, some creasing (also affecting pos. 11 stamp) and splitting on right vertical pair, still Very Fine, a rare "Specimen" overprint multiple.. E. 1,000-1,500



24

- 24° ★ **AUSTRALIA, 1927, 1½p Parliament House, Vertical Pair, Imperforate Between (94a; SG 105a).** Lightly hinged, bold color, typical centering for this error, few barely discernable toned perf tips

FINE. A DESIRABLE AND RARE EXAMPLE OF THIS 1927 PARLIAMENT HOUSE IMPERFORATE BETWEEN ERROR. ONLY 30 ERROR PAIRS WERE PRODUCED.

Scott \$4,750.00. SG £5,500 E. 2,000-3,000

- 25 **AUSTRALIA, Collection.** To 2002 in four Lighthouse hingeless albums (the years 1989-95 are missing), mostly used to the 1960s, then mostly unused thereafter, with a run of modern Mint N.H. sets, includes two £2 Kangaroos, 5sh Sydney Harbor Bridge, a useful selection of Postage Dues and Officials, early issues in mixed quality, later Fine-Very Fine(Website Highlights PDF) E. 1,000-1,500

BAHAMAS

- 26 ★★ **1918, 1p Carmine, Watermark Inverted & Reversed (SG 92x var).** Mint N.H., bright and fresh, Very Fine, a scarce watermark variety which Stanley Gibbons lists as inverted or reversed but not both, SG value as hinged with watermark reversed £400 E. 200-300



26



27

- 27 ★ **1942, 3sh Slate Purple & Myrtle Green, Stop After "Columbus" (SG 173b).** Pos. R. 2/12, lightly hinged, deep rich colors, minute oil spot at top right, otherwise Very Fine, a very rare error in better condition than most which are often found with toned gum, the first example we have offered since keeping computerized records, with 2020 B.P.A. certificate, SG £2,500 E. 750-1,000



- 28 **1963, 8p Freedom From Hunger, Name and Value Omitted (180a; SG 223a).** Tied on piece by light July 11, 1963 circular datestamp, Very Fine, particularly rare in used condition, accompanied by a 1964 letter from the original discoverer of this copy, Scott \$2,000.00, SG £2,000 E. 500-750
- 29 ★ **1916, 5p Special Delivery, Inverted Overprint (E1b; SG S1c).** Lightly hinged, bold colors, Very Fine and scarce, it is believed only 30 were printed with the inverted overprint, signed Bloch and with 1989 Brandon certificate, Scott \$1,750.00, SG £1,300 E. 400-500
- 30 ☒ **1916, 5p Special Delivery, Inverted Overprint (E1b; SG S1c).** Used with two ½p Green, all tied by "Nassau, Bahamas 21 Mar. 19" circular datestamps on "Y.M.C.A." corner card cover addressed locally, cover with vertical file fold clear of stamps, Very Fine, scarce philatelic usage dated slightly out of use, with 1970 R.P.S. certificate, catalogue values as used, Scott \$1,800.00, SG £1,400 E. 400-500
- 31 ★ **BECHUANALAND, 1887, 1p-£5 Queen Victoria, "Specimen" Handstamp (11S-22S; SG 10s-21s).** Original gum, lightly hinged or h.r., fresh colors, £1 with horizontal crease, otherwise Very Fine, Scott \$1,050.00, SG £1,000(Photo Ex/Website PDF) E. 300-400
- 32 **BECHUANALAND PROTECTORATE, 1888, 4p on 4p Lilac (64; SG 44).** Light duplex cancel, Very Fine and scarce, Scott \$500.00, SG £500 E. 150-200



33

- 33 ★ **BERMUDA, 1930, 2sh6p Grey Black & Pale Orange Vermilion on Grey Blue, Repaired Nick in Top Right Scroll (SG 89h var).** Pos. R. 3/12, lightly hinged, clearly showing the repaired state of the Nick in Top Right Scroll though variety clearly shows due to wear, fresh colors, excellent centering, Very Fine, a rare repaired state of this variety on an already scarce shade, with 2007 R.P.S. certificate, SG £2,750 as normal stamp with no premium for position E. 1,000-1,500

- 34 **BERMUDA, 1932, 2sh6p Black & Bright Orange Vermilion on Deep Blue (SG 89k).** Deep intense colors of this distinctive shade, neat Hamilton circular datestamp, Very Fine, this is the rarest shade found on the King George V key plate issues, with 2014 R.P.S. certificate, SG £3,000 E. 750-1,000



34



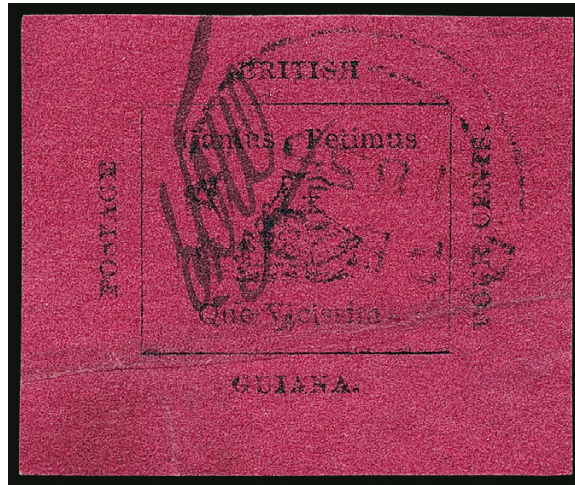
35

- 35 ★ **BERMUDA, 1951, £1 Violet & Black on Scarlet, Perf 13, Damaged Left Value Tablet (SG 121da).** Pos. R. 1/11, barely hinged, deep intense colors

VERY FINE EXAMPLE OF THE RARE KING GEORGE VI ONE-POUND WITH DAMAGED VALUE TABLET VARIETY.

This so-called "white island flaw" variety is the rarest of all the King George VI One Pound Key Plates, as it only occurred on part of the 1951 printing. It is also one of the most desirable, as the flaw is one of the most easily discernible.

SG £4,500 E. 1,500-2,000



36

- 36 **BRITISH GUIANA, 1856, 4c Black on Magenta (14; SG 24).** Huge margins all around, wonderfully fresh with paper retaining all of its original depth of color, signed "EDW" by Wight, neatly cancelled by Demerara Feb. 1856 circular datestamp, horizontal crease and thin spot in bottom margin as often seen

EXTREMELY FINE APPEARANCE. A VISUALLY STRIKING EXAMPLE OF THE 1856 4-CENT BLACK ON MAGENTA PROVISIONAL ISSUE. AN ICONIC BRITISH COMMONWEALTH RARITY.

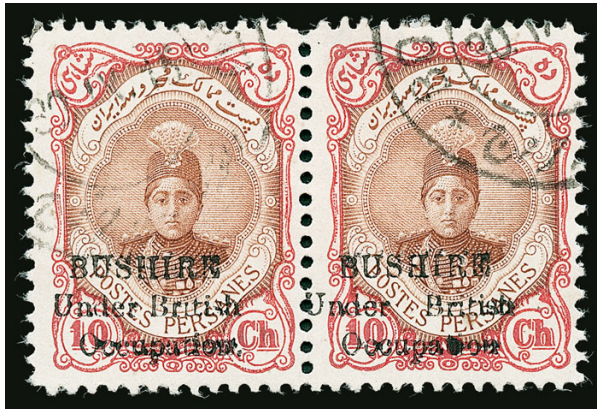
The Provisional issue was printed in Georgetown by Baum and Dallas, who published the Official Gazette. It has been hypothesized that the issue was printed due to a delay in the arrival of stamps from England. Many examples are either cut to shape or have heavy creases which discolor the paper. The example offered here is in far better condition than most and a desirable example of this world rarity.

Ex Ferrary. With 1978 A.P.S. certificate. Scott \$25,000.00. SG £25,000 E. 5,000-7,500



37

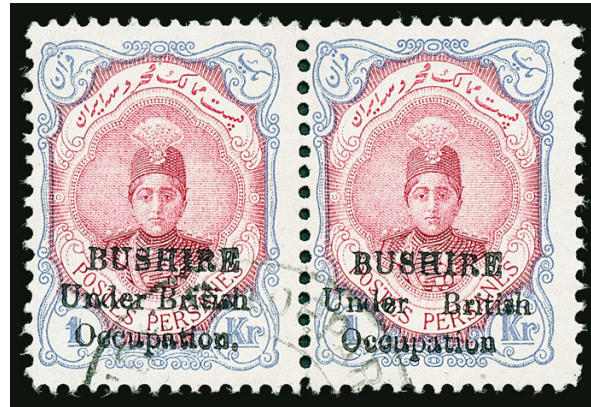
- 37 **BRITISH GUIANA, 1888-89, \$1.00 Green (124; SG 185).** Tied by Georgetown 16.11.89 circular datestamp on local cover, envelope with slight overall aging and vertical file fold not affecting stamp, Fine, a rare stamp on cover, with clear 2007 Scheller certificate
..... E. 400-500



38



39



40

- 38 **BUSHIRE, 1915, 10ch Red & Orange Brown, No Period after "Occupation"** (N7, N7b; SG 7, 7a). Horizontal pair, pos. 8-9, right stamp the variety with missing period, bold colors, well-centered, neat "Bouchir 30 IX 15" double-circle datestamps, Very Fine, signed E. Diena and with 2020 Sadri certificate, catalogued as singles, Scott \$700.00, SG £560..... E. 300-400
- 39 ★ **BUSHIRE, 1915, 12ch Green & Ultramarine, No Period after "Occupation"** (N8b; SG 8a). H.r., precise centering, bold colors, Very Fine, with 2000 B.P.A. certificate, Scott \$500.00, SG £550 E. 200-300
- 40 **BUSHIRE, 1915, 1k Ultramarine & Carmine, No Period after "Occupation"** (N9, N9a; SG 10, 10b). Horizontal pair, pos. 8-9, right stamp the variety with missing period, bold colors, neat "Bouchir" double-circle datestamp, Fine, signed E. Diena and with 2020 Sadri certificate, catalogued as singles, Scott \$700.00, SG £350 E. 300-400



41

- 41 **NEWFOUNDLAND, 1860, 1sh Orange, Handmade Paper without Mesh (15; SG 15).** Large to ample margins all around, neat grid cancel, minor usage soiling
- VERY FINE. A SCARCE FOUR-MARGINED EXAMPLE OF THE RARE 1860 ONE-SHILLING ORANGE.
- The 1sh value of the 1860 Issue is notorious for having small or no margins. This example, with full margins nearly all around, is in far better condition than most.
- With 1979 R.P.S. certificate. Scott \$12,000.00. SG £11,000. Untrade C\$15,000.00 (as fine).. E. 2,000-3,000

- 42 ★★ NEWFOUNDLAND, 1897, 1c-60c Cabot, Red "Specimen" Overprint (Unitrade 61S-74S). Mint N.H., fresh colors, 35c with light gum skip and 60c with minor wrinkles, Fine-Very Fine, Unitrade C\$1,500.00.....
 .(Photo Ex/Website PDF) E. 400-500



42EX



43 front and back

- 43 ☒ NEWFOUNDLAND, 1919, 3c Red Brown, Hawker Air Post (C1; SG 142). Well-centered, tied by "St. John's Nfld. Apr. 12, 1919 2-PM" machine cancel on cover to **West Malvern, England**, manuscript "per Aeroplane", official seal affixed to back flap and cancelled by London circular datestamp, cover with small tear at bottom, stamp has been lifted and replaced to original position (likely due to water damage from flight)

VERY FINE. A DESIRABLE AND EXCEEDINGLY RARE NEWFOUNDLAND AIR POST ISSUE. ONLY 95 STAMPS WERE USED AND FEWER STILL ARE KNOWN ON FLIGHT COVERS.

This flight famously ended with a controlled crash landing in the ocean after about 13 hours of flying. Postmaster J. A. Robinson of St. John's overprinted 200 stamps for the special flight. No more than 87 unused stamps can still exist, though the actual number of surviving copies is probably quite lower. In addition to these, 95 were used and 18 were defective and subsequently destroyed.

With 1971 B.P.A. (not mentioning stamp being lifted) and 1983 E. Diena certificate. Scott \$25,000.00. Unitrade C\$35,000.00..... E. 7,500-10,000

CANADA



44



45



46



47

- 44 **1851, 6p Slate Violet, Laid Paper (2; SG 2).** Large to ample margins all around, fresh color and strong impression, target cancel, Very Fine, signed A. Brun, with 2020 Greene Foundation certificate, Scott \$1,650.00, SG £1,300, Unitrade C\$2,000.00 E. 400-500
- 45 **1851, 6p Slate Violet, Laid Paper (2; SG 2).** Large to ample margins all around, rich shade and crisp impression, minor corner crease, Very Fine appearance, Scott \$1,650.00, SG £1,300, Unitrade C\$2,000.00 E. 200-300
- 46 **1851, 6p Grayish Purple, Laid Paper (2b; SG 3).** Large to full margins all around, bold color and strong impression, target cancel, Very Fine, signed Roumet, with 2020 Greene Foundation certificate, Scott \$1,750.00, SG £1,400, Unitrade C\$2,400.00 E. 500-750
- 47 **1855, 6p Greenish Gray, Wove Paper (5b; SG 10).** Huge margins including part of adjoining stamp at top, clear at bottom, bold color and razor-sharp impression, Very Fine, with 2004 Gratton certificate, Scott \$1,200.00, SG £1,200, Unitrade C\$1,600.00 E. 300-400



48



49



50EX

- 48 **1857, 6p Gray Violet, Thick Hard Paper (5d; SG 19).** Large to ample margins all around, rich shade, crisp paper on distinguishably hard paper, lightly cancelled, Very Fine, signed Bernichon, with 2020 Greene Foundation certificate, Scott \$3,000.00, SG £2,500, Unitrade C\$4,000.00 E. 750-1,000
- 49 **1857, 7½p Green (9; SG 12).** Large to ample margins all around, strong color, minute thin spot at bottom, Very Fine appearance, Scott \$3,500.00, SG £2,500, Unitrade C\$5,000.00 E. 400-500
- 50 ★ **1897, ½c-\$5.00 Jubilee (50-65).** Original gum except \$1.00 regummed and 15c no gum, mostly h.r., bright colors, the odd small fault on a couple lower values, several well-centered, Fine-Very Fine, Scott \$8,338.00, Unitrade C\$11,615.00 (Photo Ex/Website PDF) E. 1,000-1,500



- 51 1897, ½c-\$5.00 Jubilee (50-65). Bold colors, \$2.00 and \$3.00 with Toronto roller cancel, all others with circular datestamp, some values quite well-centered, Fine-Very Fine, Scott \$5,716.00, Unitrade C\$8,036.50(Photo Ex/Website PDF) E. 1,000-1,500
- 52 ★★ 1897, 10c Jubilee, Major Re-entry (Unitrade 57i). Mint N.H. block of four, top right stamp showing re-entry from pos. 5, deep rich colors, well-centered, Very Fine, Unitrade value as singles C\$3,750.00 E. 500-750
- 53 ★ 1898, 10c Brown Violet, Imperforate Pair (83a). Horizontal pair, original gum, minor h.r., large balanced margins, strong color, Very Fine and choice, only 100 pairs printed, with 2013 Sismondo certificate, Scott \$1,100.00, Unitrade C\$1,500.00 E. 400-500
- 54 ★ 1924, 3c Carmine Coil, Die I, Wet Printing (130a). Block of four, lightly hinged, excellent centering, bold color, Very Fine, Scott \$1,050.00, Unitrade C\$1,500.00.. E. 300-400
- 55 ★★ 1928-29, 1c-\$1.00 King George V “Scroll” Issue, Imperforate (149b-159a). Mint N.H. horizontal pairs, large margins, bright colors, 1c slightly oxidized, Very Fine-Extremely Fine set, Scott \$3,615.00, Unitrade C\$5,212.50 ..(Photo Ex/Website PDF) E. 1,000-1,500
- 56 ★★ 1928-29, 1c-\$1.00 George V “Scroll” Issue, Vertical Pairs, Imperforate Horizontally (149e-159c). Mint N.H. pairs, excellent centering throughout, brilliant colors, 1c slightly oxidized, Very Fine-Extremely Fine, an attractive set of this desirable series, ex Cook, \$1.00 with 1999 A.P.S. certificate, Scott \$3,970.00, Unitrade C\$5,325.00.....(Photo Ex/Website PDF) E. 1,000-1,500



- 57 ★ **1930, 12c Gray Black, Horizontal Pair, Imperforate Between (174 var).** Horizontal strip of four with plate no. A-1 selvage at top, left pair Mint N.H., third stamp with hinge thin and h.r. in selvage, strong color, Very Fine and scarce, unlisted in either Scott or Unitrade..... E. 200-300
- 58 P **1928, 5c Brown Olive, Air Post, Large Die Proof (C1P).** Printed in issued color on India measuring 101 x 86mm and die sunk on card measuring 162 x 148mm, no die number and from unhardened state, Extremely Fine, a remarkably pristine large die proof of Canada's first Air Post issue, a census kept at www.BNaproofs.com records only one (this example not recorded), unlikely more than two or three exist, ex Brigham..... E. 750-1,000
- 59 ★★ **1928, 5c Brown Olive, Air Post, Imperforate and Part Perforated (C1a, C1b, C1c).** Three Mint N.H. pairs, imperforate pair with sheet margin at left (C1a), vertical pair with part imprint margin at top (C1c), wonderfully fresh, Extremely Fine trio, Scott \$1,005.00, Unitrade C\$1,575.00(Photo Ex/Website PDF) E. 300-400
- 60 ★ **1932, 6c on 5c Brown, Air Post, Inverted Surcharge (C3a).** Three examples, two Mint N.H. and one lightly hinged, two with selvage at right, strong colors, Very Fine, only 200 were printed, one Mint N.H. with 1984 Greene Foundation certificate, other with 1997 P.F. certificate and is ex "World Traveler", Scott \$875.00, Unitrade C\$1,200.00..(Photo Ex) E. 300-400
- 61 ★★ **1932, 6c on 5c Brown, Air Post, Double Surcharge (C3b).** Mint N.H., particularly well-centered, bold color, Very Fine, Unitrade notes most "are off centre with perforations crowding or cutting design", only 100 printed, large Stanley Gibbons backstamp, Scott \$925.00, Unitrade C\$2,250.00 E. 300-400
- 62 ★ **1932, 6c on 5c Brown, Air Post, Triple Surcharge (C3c).** Minor h.r., three distinct surcharges, well-centered, Very Fine, only 200 printed, signed Sanabria, Scott \$375.00, Unitrade C\$500.00..... E. 150-200



63



64

- 63 ★田 1932, 6c on 5c Brown, Air Post, Triple Surcharge (C3c). Block of four, top right stamp lightly hinged, other three Mint N.H., clear tripling of surcharge, each stamp with small red backstamp, Fine and scarce block of this collectible error, only 200 printed, with 1995 Greene Foundation certificate (as Mint N.H.), catalogued as singles, Scott \$1,875.00, Unitrade C\$1,100.00 E. 500-750
- 64 ★田 1932, 6c on 5c Brown, Air Post, Pair, One Without Surcharge (C3d). Block of four with selvage at left, top pair lightly hinged, bottom pair Mint N.H., bold color on fresh paper, Very Fine, a rare error block of which **only ten pairs** thought to exist, ex Boonschaft, with 1966 P.F. certificate, catalogued as two pairs, Scott \$2,300.00, Unitrade C\$3,000.00 E. 750-1,000



65



66

- 65 P 1935, 6c Red Brown, Air Post, Large Die Proof (C5P). Printed in issued color on India measuring 84 x 75mm and die sunk on card measuring 227 x 150mm, with Die No. X-G-585 and "Canadian Bank Note Co. Ltd." imprint below, Extremely Fine, a particularly fresh and pristine large die proof, a census kept at www.BNAproofs.com records **only five examples**, ex Brigham..... E. 750-1,000
- 66 P 1938, 6c Red Brown, Air Post, Large Die Proof (C6P). Printed in Red Brown (issued Blue), on India measuring 89 x 75mm and die sunk on card measuring 227 x 150mm, with Die No. XG-674 and "Canadian Bank Note Company, Limited" imprint below, Extremely Fine and pristine large die proof, a census kept at www.BNAproofs.com records **only fifteen examples**..... E. 400-500

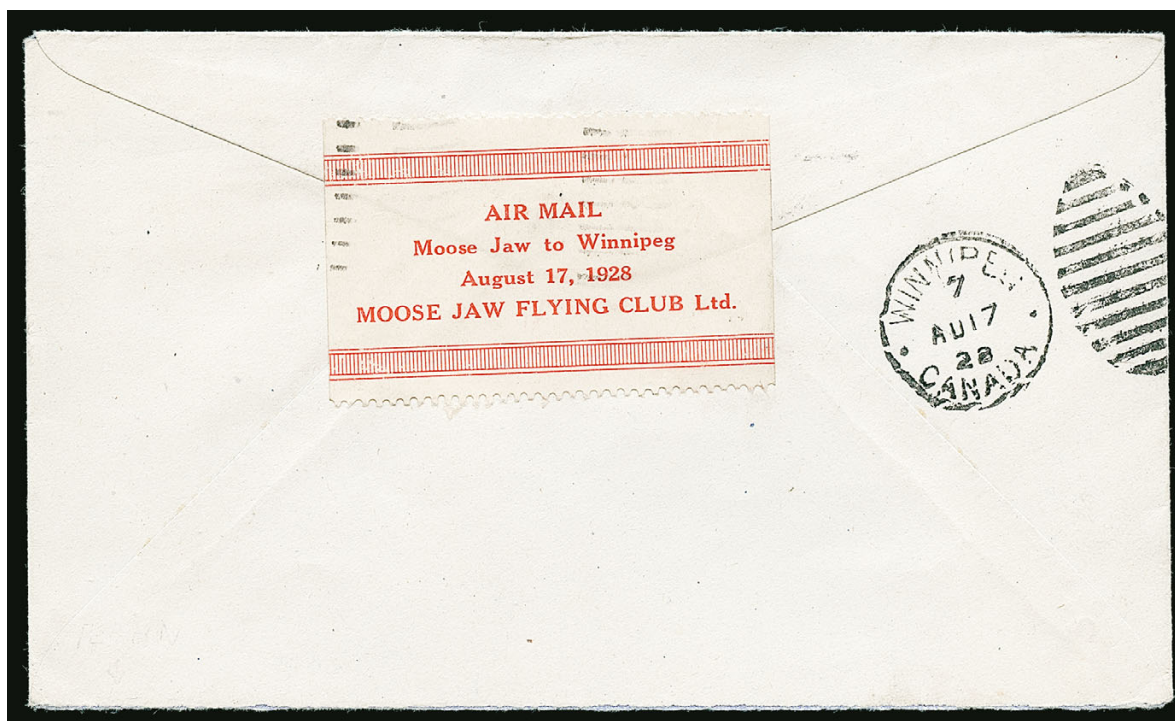


67



69

- 67 ★★ 1938, 6c Blue Air Post, Imperforate (C6a). Mint N.H. horizontal pair, large balanced margins, fresh color, Very Fine, Scott \$850.00, Unitrade C\$1,200.00..... E. 200-300



68

- 68 ☒ 1928, (\$1.00) Red on White, Moose Jaw Flying Club Air Post Semi-Official (CLP7). Affixed and cancelled on reverse of flown cover from Moose Jaw to Winnipeg, front with 2c Confederation (142) tied by Moose Jaw Aug. 17, 1928 machine cancel, Winnipeg duplex arrival
VERY FINE. A HANDSOME AND DESIRABLE FLOWN COVER WITH THE MOOSE JAW FLYING CLUB STAMP.
With 1994 Greene Foundation certificate. Scott \$3,250.00. Unitrade C\$3,500.00 E. 1,500-2,000
- 69 田 1906, 2c Violet, Postage Due, Type "D" Lathework (J2). Block of four with **full strong lathework selvage at left**, lightly struck violet cancel, bold color, top left stamp with minor crease, still Very Fine, an exceptionally rare used Postage Due multiple with lathework, Unitrade notes **only four recorded**, Unitrade C\$6,000.00 as an unused block of four..... E. 750-1,000



- 70 ★★田 1938, 10c-\$1.00 Pictorials, Official Perforated “O.H.M.S.” (O241-O245). Mint N.H. blocks of four, each with selvage on one side except 10c, 20c and \$1.00 with initials inverted, 10c with initials sideways, exceptionally fresh and Very Fine, catalogued as singles, Scott \$1,740.00, Unitrade C\$1,203.75(Photo Ex/Website PDF) E. 500-750
- 71 **Canada and Provinces Collection.** To the 1950s on album pages, early used issues include 1857 7½p Green with B.P.A. certificate, various Large Queens including 3p on Laid Paper, Small Queens unused and used, starting in 1897 it is nearly all unused, including the Jubilee series complete, and a solid run of 20th Century, Back-of-Book, Provinces contain some early stamps and a large number of 20th Century Newfoundland, including the Dornier and Balbo Air Post, mixed condition on the early issues, 20th Century mainly Fine-Very Fine(Website Highlights PDF) E. 3,000-4,000
- 72 ★ **Canada Mostly Unused Group of Better Items.** 15 on auction lot cards, singles and blocks, a few classics, \$3.00 Jubilee, King Edward VII set, 20th Century imperforate pairs, Nova Scotia 6p Deep Green used, and more, a few small faults, many Fine-Very Fine(Website PDF) E. 1,500-2,000
- 73 **Canada Collection.** To 2013 in six Lighthouse hingeless albums, mostly used to the 1960s (though there is some better unused in this period), largely unused thereafter, with a solid run of Mint N.H. sets, useful Back-of-Book, Large Queens with some varieties, used in mixed condition (these were valued at a tiny percentage of catalogue value), modern Fine-Very Fine(Website Highlights PDF) E. 1,000-1,500
- 74 田 **CAPE OF GOOD HOPE, 1853, 1p Brick Red on Bluish Paper (1; SG 1).** Block of four comprising two square pairs, mostly large margins to clear along top, neat triangular cancels, vertical crease thru one pair, fresh color on deeply blued paper, Very Fine, Scott \$1,600.00, SG £1,800 E. 400-500
- 75 **CAPE OF GOOD HOPE, 1857, 1p Rose (3; SG 5).** Group of 10 stamps comprising a block of three, two square pairs and three singles, mostly large margins all around, each with triangular cancels, square pairs with light crease and block of three with crease in margin, mostly Very Fine, catalogued as singles in cheapest shade, Scott \$3,250.00, SG £3,000(Photo Ex/Website PDF) E. 500-750
- 76 **CAPE OF GOOD HOPE, 1861, 4p Dark Blue “Woodblock” (9c; SG 14c).** Large to ample margins, bold color and intense impression, shallow thin spot at top, Very Fine appearance, a rare shade of this Woodblock, Scott \$5,750.00, SG £5,500 E. 750-1,000



77

- 77 **CEYLON, 1859, 8p Brown (8; SG 7).** Ample to clear margins on all sides, deep color, sharp impression, Very Fine, with 2017 B.P.A. certificate, Scott \$1,750.00, SG £1,500 E. 500-750

- 78 **CEYLON, 1859, 9p Lilac Brown (9; SG 8).** Mostly large margins, ample at left, light barred cancel, fresh color on bright paper, Very Fine, Scott \$1,050.00, SG £900... E. 400-500



78



79

- 79 ★ **CEYLON, 1912, 500r Gray Green (217; SG 322).** Lightly hinged, rich color, very light surface mark mostly around neck area

VERY FINE APPEARING EXAMPLE OF THE 500-RUPEES HIGH DENOMINATION RARITY.

With 2014 B.P.A. certificate. Scott \$8,750.00. SG £8,500 E. 2,000-3,000

- 80 **CEYLON, Collection.** To 1951 on album pages, dozens of used Chalon heads, with duplication including shade varieties, some unused 20th Century and Officials, early issues in typical mixed quality, later mostly Fine-Very Fine(Website PDF) E. 500-750

- 81 ★ **COOK ISLANDS, 1892, 1p Black, Vertical Pair, Imperforate Between (5a; SG 1a).** Vertical pair, part disturbed original gum

FINE. A VERY RARE 1892 ONE-PENNY VERTICAL PAIR, IMPERFORATE BETWEEN. ONE OF THE FINEST PAIRS OF THE SIX THAT WERE PRINTED FROM ONE SHEET. A GREAT BRITISH COMMONWEALTH AND PACIFIC ISLANDS RARITY.

The first example that we have offered in over 20 years.
Scott \$11,000.00. SG £10,000 E. 4,000-5,000



81



82

83

84

- 82 S **FALKLAND ISLANDS, 1898, 2sh6p Dark Blue, 5sh Brown Red, "Specimen" Overprint (20S-21S; SG 41s-42s).** Lightly hinged, fresh and Very Fine, Scott \$575.00, SG £550 E. 200-300
- 83 ★ **FALKLAND ISLANDS, 1933, 10sh Light Brown and Black (75; SG 137).** Lightly hinged, bold colors, Very Fine, Scott \$850.00, SG £850 E. 300-400
- 84 ☒ **FALKLAND ISLANDS, 1946, 6p Black & Orange, "South Poke" (SG G6c).** Used with 1948 ½p Black & Green, Dot in "T" (SG G9b), vertical pair, top stamp the variety, all tied by "International Geophysical Year Expedition 30 Jun. 1956" circular datestamp with additional strike at left on "The Royal Society Antarctic Expedition" cachet cover to Bournemouth, England, cover with small toned spot at bottom, Very Fine, scarce combination of these collectible varieties on cover, which catalogue £450 as used singles..... E. 300-400

FIJI, 1877, 6-PENCE CARMINE ROSE ON LAID PAPER
WITH V.R. OVERPRINT



85

- 85 ☒ **FIJI, 1877, 6p Carmine Rose, Laid Paper (39b; SG 33a).** Two horizontal pairs, tied by well-struck sunburst cancels on 1881 cover **to London**, boxed "Too Late" handstamp and London Sept. 26, 1881 arrival datestamp, cover with trivial edge tears at bottom

VERY FINE. AN EXCEPTIONAL COVER WITH TWO PAIRS OF THE 1877 SIX-PENCE ON LAID PAPER WITH "V.R." OVERPRINT. A SHOWPIECE AND A HIGHLY EXHIBITABLE FIJI COVER, ARGUABLY ONE OF THE GREATEST "V.R." COVERS EXTANT.

Ex Eastgate. E. 10,000-15,000

- 86 ★ **GIBRALTAR, 1921-32, £5 Dull Violet and Black (93; SG 108).** Barely hinged (if at all), deep rich colors on fresh paper, Very Fine example of this key stamp, with small owner's backstamp, Scott \$1,750.00, SG £1,600..... E. 750-1,000



86

- 87 **GIBRALTAR, Collection.** To 1949 on Scott pages, lacking only the £5 King George V and a couple other minor stamps for completion, early issues mostly used and in slightly mixed quality, 20th Century largely unused and generally Fine-Very Fine(Website PDF) E. 1,000-1,500
- 88 **HELIGOLAND, Collection.** Over 250 items, with genuine stamps carefully separated from reprints and forgeries, those reprints themselves have been separated into the various printings, genuine stamps are both unused and used, typical mixed quality(Website PDF) E. 400-500



89EX



90EX



91EX

- 89 ★ **HONG KONG, 1903, 1c-\$10.00 King Edward VII (71-85; SG 62-76).** H.r., fresh colors, 2c with slight crease (catalogues \$20.00), 10c with minor gum toning, Fine-Very Fine set, Scott \$2,781.00, SG £3,000(Photo Ex/Website PDF) E. 1,000-1,500
- 90 ★ **HONG KONG, 1904-11, 1c-\$10.00 King Edward VII (86-108; SG 77-99).** Complete set of 23 values, h.r. except key \$10.00 lightly hinged, bold colors, 50c with minor gum toning, otherwise fresh and a Fine-Very Fine set, \$10.00 with 1999 A.P.S. certificate, Scott \$4,117.00, SG £3,900(Photo Ex) E. 1,500-2,000
- 91 ★ **HONG KONG, 1921-37, 1c-\$5.00 King George V (129-146; SG 117-132).** Complete set of eighteen values, h.r., bright and fresh, Fine-Very Fine, Scott \$1,013.00, SG £1,000.....(Photo Ex/Website PDF) E. 300-400
- 92 ★ **HONG KONG, Lot.** On stockpages, an album page, and auction lot cards, early Queen Victoria heads both unused and used, some better surcharged stamps, 20th Century sets and high values, and a nice array of British Offices in China, slightly mixed quality, but a large number are Fine-Very Fine.....(Website PDF) E. 2,000-3,000
- 93 **HONG KONG, Collection.** To 1985 on album pages, various Queen Victoria issues that are mostly used, early unused 20th Century including 1904 \$10.00, King George VI and QEII issues unused (with some additional used sets), most lightly hinged, also several Treaty Ports, G.B. Offices in China, and even a few foreign stamps with Hong Kong cancels.....(Website PDF) E. 1,000-1,500

- 94 **INDIA, Collection.** To 1955 on album pages, earliest issues used and in mixed quality, much of the 20th Century is unused, with definitive sets, the Gandhi set, and Officials, most lightly hinged, Fine-Very Fine.....(Website PDF) E. 750-1,000
- 95 **JAMAICA, Collection.** To 1952 on album pages, much is a straightforward unused or used collection, however the collector did have a specialized group of War Tax stamps, with numerous varieties (both SG-listed and unlisted), slightly mixed quality, the War Tax section is Fine-Very Fine(Website PDF) E. 500-750



96

- 96 **LABUAN, 1885, 2c on 16c Blue, Double Surcharge (27a; SG 25a).** Barred oval cancel, deep color, tiny facial rub along the left frameline of little consequence
FINE. ONLY ONE SHEET OF TEN STAMPS WAS PRODUCED WITH THE DOUBLE OVERPRINT.
LESS THAN SIX ARE RECORDED.
Signed Calves and J-F Brun. Scott \$7,500.00. SG £7,000..... E. 2,000-3,000



97EX

- 97 ★ **MALAYA, Pahang, 1898-99, 10c-\$5.00 Overprints (16-20; SG 19-24).** Original gum except 25c no gum, lightly hinged or h.r., fresh colors, \$5.00 with minute hinge thin spot, otherwise Very Fine, \$5.00 signed Sismondo and with 2017 B.P.A. certificate, Scott \$3,048.00, SG £3,014(Photo Ex) E. 750-1,000

- 98 **MALTA, Used Collection.** To 1935 on album pages, several of the ½p Yellow and buff stamps, later Queen Victoria issues, 20th Century fairly well-filled, condition a little mixed, Fine-Very Fine appearance.....(Website PDF) E. 500-750



99



100



101

- 99 **MAURITIUS, 1848, 1p Red Orange on Bluish Paper, Intermediate Impression (5a; SG 11).** Position 5, huge margins all around, fresh color and a reasonably sharp impression, neat target cancel, small natural paper wrinkle at bottom, Extremely Fine appearance, signed Bloch, A. Diena and Holcombe, Scott \$2,900.00, SG £3,000..... E. 750-1,000
- 100 **MAURITIUS, 1848, 2p Blue on Yellowish White Paper, Intermediate Impression (4b; SG 14).** Position 5, huge balanced margins, tied to piece by light concentric circles, bold color
EXTREMELY FINE EXAMPLE OF THE 2-PENCE BLUE "POST PAID" INTERMEDIATE IMPRESSION ON SMALL PIECE. SCARCE IN SUCH SUPERB CONDITION.
With 1996 Richter (as No. 6, SG 8) and 2020 R.P.S. certificates. Scott \$3,600.00. SG £3,500..... E. 2,000-3,000
- 101 **MAURITIUS, 1848, 2p Blue on Bluish Paper, Intermediate Impression (6a; SG 14).** Position 11, large margins to clear at right **with sheet margin** at bottom, rich color, neatly struck target cancel, showing a guide line thru value at bottom, Very Fine and attractive example of this scarce stamp, ex Dale-Lichtenstein, with 2004 B.P.B. certificate, Scott \$3,750.00, SG £3,500 E. 750-1,000



102

- 102 **MAURITIUS, 1924, 50r Lilac & Green (200; SG 222).** Neat "General Post Office" postal cancellation (Proud Ty. D72), slightly washed color which is endemic to this stamp even in unused condition, otherwise Very Fine, a rare postally used example of this high value (Sismondo notes it is the first sound example he has expertized), the first of which we have offered since keeping computerized records, with 2019 Sismondo certificate, Scott \$2,750.00, SG £2,750..... E. 750-1,000

- 103 **MONTSERRAT, Collection.** To 1957, mostly on two sets of album pages for unused and used, high degree of completion throughout, slightly mixed quality, with a large number Fine-Very Fine, inspection is suggested.....(Website PDF) E. 1,000-1,500

- 104 **NEW GUINEA, 1935, £2 Violet, £5 Green, Air Post (C44-C45; SG 204-205).** Each with neat circular datestamps, well-centered and bright colors, Very Fine, Scott \$710.00, SG £590 (Photo Ex/Website PDF) E. 200-300



104EX



105

- 105 ★ **NEW HEBRIDES, 1908-09, 1p Carmine, Pair, One Without Overprint (8a; SG 2a).** Vertical pair, top stamp without overprint, barely hinged at top (if at all), brilliantly fresh color

VERY FINE. EASILY ONE OF THE FINEST OF THE TEN RECORDED EXAMPLES OF THIS NEW HEBRIDES ONE-PENNY VERTICAL PAIR, ONE WITHOUT OVERPRINT. A RENOWNED BRITISH COMMONWEALTH RARITY.

This error occurred on the entire fourth row of one sheet. Unlike many of the recorded copies, this pair is completely free of the gum toning often seen. Confirming this error's immense rarity is the fact that this is the first example we have offered since our 1989 Rarities of the World sale.

Ex Jersey (where it graced the front catalogue cover of his 1985 Christie's Robson Lowe sale). With 1978 Nussbaum certificate. Scott \$10,000.00. SG £10,000..... E. 5,000-7,500

- 106 ★ **NEW HEBRIDES, Unused Collection.** To 1979 on Scott pages, both British and French issues, lacking only the French 5c on 50c and a few of the 1977 Surcharges for completion, early issues mostly lightly hinged, a few with light gum toning (as often for this colony), later issues Mint N.H. and generally Fine-Very Fine..**(Website PDF)** E. 500-750
- 107 **NEW ZEALAND, Collection.** To 2000 in four Lighthouse hingeless albums, 19th Century used, there are some better early 20th Century unused sets, from 1960s on it is mostly unused, with a nice run of modern Mint N.H. sets, Back-of-Book includes Postal Fiscals (some fiscally used), Postage Dues, Officials and Life Insurance stamps, early issues in mixed condition, later mainly Fine-Very Fine..**(Website Highlights PDF)** E. 1,000-1,500
- 108 **NEW ZEALAND, Collection.** To about 1970 on album pages, several Chalon heads, including about 130 perforated, duplication including shades and cancels, later 19th Century used, with 1878 2sh and 5sh, 30 1890s stamps with advertising on back, early 20th Century unused and used (some stamps present both ways) and later issues mostly unused, Back-of-Book, with Officials, Life Insurance stamps, Postal-Fiscals (many with fiscal cancels), and more, early issues in mixed quality, later issues generally Fine-Very Fine**(Website Highlights PDF)** E. 1,000-1,500

- 109 ★ **NIUE, 1920, 6p Deep Green & Red Brown, Center Inverted (39a; SG 42 Footnote).** Lightly hinged, wide margins, bold colors, Very Fine and scarce, this error was printed but were never supplied to the post office, Scott \$1,000.00, SG £850 E. 300-400



109

NORFOLK ISLANDS THE UNIQUE SET OF BLOCKS OF THE FIVE UNISSUED VALUES



110

- 110 ★★田 **NORFOLK ISLANDS, 1940, 1p Green, 2p Scarlet, 3p Blue, 6p Chocolate, 1sh Gray Green, Perf 11** (12 footnote; SG 12a footnote). Mint N.H. blocks of four with selvage (1p corner selvage), bright and fresh, well-centered

THE UNIQUE SET OF BLOCKS OF THE FIVE UNISSUED VALUES PERF 11 AND IN DIFFERENT COLORS.

These were produced in 1940 to be Norfolk Island's first stamps. They were never put into use and the entire stock was supposed to be burned. However, a tiny number of sets escaped destruction. The same design was used for the colony's first stamps in 1947, perf 14 and in different colors.

Such sets rarely come to the marketplace. This is the only recorded set of blocks... E. 7,500-10,000

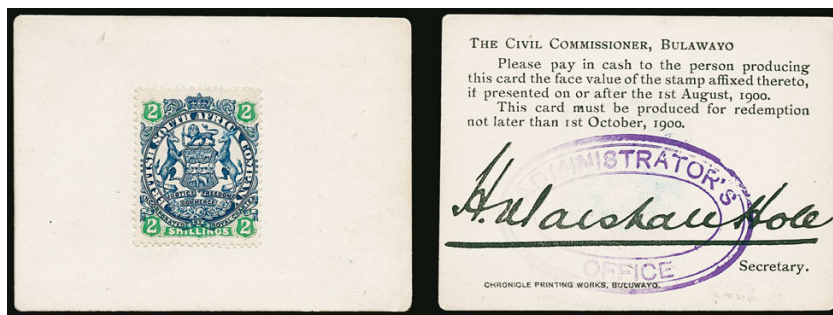


- 111 ★ **NORTH BORNEO, 1889, \$10.00 Brown, “DOLLAPS” Variety (49 var; SG 50b).** Original gum, small paper h.r., well-centered, rich color, certificate states “creased”, but it would be more accurately described as a gum bend, Very Fine, a rare variety that occurs only at position R 2/1, with 1986 A.P.S. certificate, SG £1,500..... E. 300-400
- 112 ★★田 **NORTH BORNEO, 1890, 2c on 25c Slate Blue, Inverted Surcharge (50a; SG 51a).** Mint N.H. block of nine with selvage at bottom, remarkably fresh color, precise centering
 VERY FINE. EASILY ONE OF THE LARGEST EXISTING MULTIPLES OF THE 1890 2-CENTS ON 25-CENTS WITH INVERTED SURCHARGE.
 Catalogued as hinged singles. Scott \$4,050.00. SG £4,050 E. 1,500-2,000
- 113 (★) **NORTH BORNEO, 1894, 5c Orange Red & Black, Horizontal Pair, Imperforate Between (62a; SG 72a).** Horizontal pair, unused (no gum), vibrant color, Fine and scarce, Scott \$850.00, SG £900 E. 200-300
- 114 ★ **NORTH BORNEO, 1911, 25c-\$10.00 Coat of Arms Group (152-157; SG 178-183).** Original-gum single and block of four of each value, with additional singles and blocks, including some perf 14-/12-15, \$1.00 block (which has toned gum) contains the re-entry on top left stamp, also used \$5.00 and \$10.00 (\$10.00 cancel may not be able to get certified), Fine-Very Fine, SG about £6,500 (not counting the used)(Photo Ex/Website PDF) E. 1,000-1,500
- 115 S **NYASALAND PROTECTORATE, 1914, £10 Ultramarine & Dull Violet, Specimen Ovpt (24S; SG 99S).** Lightly hinged, intense colors, Very Fine and quite scarce, SG £800 E. 300-400
- 116 **NYASALAND, Collection.** 1891-1949, on Scott pages, mainly unused, includes British Central Africa, with values to £1, Nyasaland itself is just about complete (the £10 is a Specimen overprint and in poor condition), mixed quality, most with Fine-Very Fine appearance, inspection is recommended(Website PDF) E. 750-1,000

RHODESIA



117



118

- 117 (★) **1892, £10 Orange Brown (19; SG 13).** Unused (no gum), well-centered, Very Fine and scarce, signed Holcombe, with 1997 Brandon certificate, catalogued as original gum, Scott \$3,000.00, SG £2,750 E. 300-400
- 118 **1896, 2sh Dark Blue & Green on Buff (34; SG 47).** Fresh colors, affixed to **Marshall Hole currency card** (Type I, without stop after Bulawayo), with normal violet "Administrator's Office" handstamp, Very Fine and scarce with this value, these "stamp currency" cards were issued by Civil Commissioner Hugh Marshall Hole in Bulawayo due to the scarcity of coinage, during to the Siege of Mafeking the Boers had captured the railway between Kimberley and Bulawayo affectively cutting off Bulawayo and creating a shortage of coinage E. 300-400



119

- 119 (★)田 **1901, £5 Dark Blue, £10 Blue Lilac (74-75; SG 92-93).** Blocks of four, £5 with selvage at top, unused (no gum), well-centered, wonderfully fresh colors
 VERY FINE AND SCARCE EXAMPLES OF THE 1901 5-POUND AND 10-POUND IN BLOCKS OF FOUR.
 With 1992 E. Diena certificate for both blocks. Catalogued as original gum singles. Scott \$30,000.00. SG £27,000..... E. 2,000-3,000



120



121



123

- 120 ★ **1910, 7sh6p Bright Blue & Carmine (116; SG 160b).** Large part original gum, h.r., wonderfully well-centered, vibrant colors, Very Fine, Scott \$725.00, SG £650 .. E. 200-300
- 121 **1910, £1 Black & Red (118a; SG 166).** Well-centered, neat "Bulawayo, S. Rhodesia, 12 Feb. 11" double-circle datestamp, fresh and Very Fine, with 1983 R.P.S. certificate, Scott \$425.00, SG £375 E. 200-300



122

- 122 ★ **1910, £1 Bluish Slate & Carmine, Perf 15 (118c; SG 179).** Vertical pair, lightly hinged, deep rich colors on bright paper, certificate harshly notes "stain spots" which are nearly imperceptible except a couple perfs at top
 VERY FINE AND INCREDIBLY RARE ORIGINAL-GUM PAIR OF THE ONE-POUND DOUBLE-HEAD PERFORATED 15. ONE OF THE KEY STAMPS OF THE COLONY.
 With 2000 B.P.A. certificate. Catalogued as singles. Scott \$38,000.00. SG £36,000.....
 E. 10,000-15,000
- 123 **1910, £1 Bluish Slate & Carmine, Perf 15 (118c; SG 179).** Neat circular datestamps, intense shade and impression, well-centered, Very Fine and scarce used example of this high value, with 1979 P.F.S.A. and 2001 Brandon certificates, Scott \$4,750.00, SG £3,250
 E. 1,000-1,500



124EX



126EX



127



128

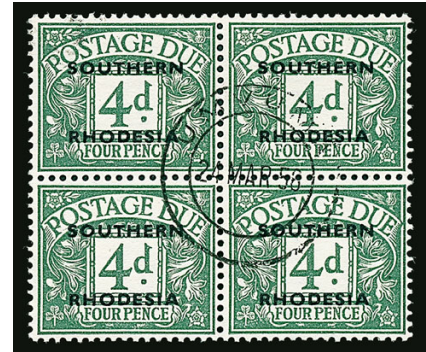
- 124 ★ **ST. KITTS-NEVIS, 1923, ½p-£1 Tercentenary (52-64; SG 48-60).** Mostly lightly hinged, fresh colors, Very Fine, ex Baillie, Scott \$1,400.00, SG £1,200. (Photo Ex/Website PDF) E. 400-500
- 125 ★ **SEYCHELLES, Unused Collection.** 1890-1948 on album pages, several complete sets and a number of varieties, with various surcharge deformities, King Edward VII 45c with dented frame and a couple King George V with split "A", some of the later issues Mint N.H., overall quite fresh and Fine-Very Fine (Website PDF) E. 500-750
- 126 ★ **SIERRA LEONE, 1933, ½p-£1 Wilberforce (153-165; SG 168-180).** Mostly lightly hinged, bright colors, £1 with single toned perf (seen on reverse), Fine-Very Fine set, Scott \$1,209.00, SG £1,100 (Photo Ex/Website PDF) E. 300-400
- 127 **SOLOMON ISLANDS, 1907, 1p Red (2 var; SG 2 var).** Top right corner margin horizontal pair with sheet no. 584, with variety **imperforate between stamps and margins at top and right**, neat Tulagi circular datestamp, Very Fine and rare variety..... E. 1,000-1,500
- 128 ★田 **SOLOMON ISLANDS, 1907, 2½p Orange (4 var; SG 4 var).** Top right corner margin block of four with sheet no. 268, h.r., with variety **imperforate between stamps and margins at top and right**, Very Fine, a rare variety and especially desirable as a position block, with photocopy of 1975 R.P.S. certificate E. 1,000-1,500



129

- 129 S **SOMALILAND PROTECTORATE, 1904, 2p Red Violet & Dull Violet, No Period After "M", "Specimen" Overprint, Official (O13aS; SG O12as).** Lightly hinged, deep rich color, mild gum bend of little consequence, still Very Fine, we are aware of only one other example additionally with the "Ultramar" overprint showing the No Period variety, an affordable alternative to the issued stamp with this variety E. 200-300

- 130 田 **SOUTHERN RHODESIA, 1951, ½p-1sh Postage Dues (J1-J6, J5a; SG D1-D7).** Used blocks of four, each cancelled by circular datestamp, key 4p Dull Gray-Green cancelled by Umvuma 24 Mar 56 postmark, Fine-Very Fine, the 4p Dull Gray-Green stamp is particularly rare in a used block, catalogue values as singles, Scott \$2,536.00, SG £2,928 (Photo Ex/Website PDF) E. 750-1,000



130EX



131

- 131 ★ **SOUTH WEST AFRICA, 1927, 2p Violet Brown & Gray, Double Overprint, One Inverted (99d; SG 60cb).** Horizontal bilingual pair, minor h.r., fresh and Very Fine, Scott \$800.00, SG £750 E. 300-400

- 132 ★田 **SOUTH WEST AFRICA, 1927, 2p Violet Brown & Gray, Double Overprint, One Inverted (99d; SG 60cb).** Block of four, top pair lightly hinged, bottom pair Mint N.H., excellent colors, slightly rounded perf on bottom right stamp, otherwise Very Fine and scarce multiple, catalogued as two pairs, Scott \$1,600.00, SG £1,500 .. E. 400-500



132

STRAITS SETTLEMENTS

- 133 ★ **1911, \$25.00 Blue & Violet on Blue (145; SG 168).**
 Lightly hinged, excellent centering, bright and fresh
 VERY FINE AND CHOICE. A HANDSOME UNUSED
 EXAMPLE OF THE \$25.00 KING EDWARD VII.
 Scott \$3,600.00. SG £3,750 E. 1,500-2,000



133



134

- 134 S **1908, \$500.00 Violet & Orange, "Specimen" Overprint (146S; SG 169s).** Lightly hinged, bold colors, slight toning around edges of perf tips (mostly seen on reverse), Very Fine appearance, a scarce "Specimen" and affordable alternative to the issued stamp which catalogues \$175,000.00 (£170,000), Scott \$4,500.00, SG £4,750 E. 1,000-1,500

- 135 S **1915, \$500.00 Orange & Dull Violet, "Specimen" Overprint (174S; SG 215s).** H.r., bold colors
 FINE. A SCARCE EXAMPLE OF THE 1912 \$500.00 KING GEORGE V WITH "SPECIMEN" OVERPRINT.
 A relatively inexpensive way to fill an otherwise impossible space as the normal stamp catalogues \$90,000.00 (£100,000). Scott \$4,750.00. SG £5,500 E. 1,500-2,000



135



136

- 136 ★★ **1921, \$25.00 Blue & Violet on Blue (202; SG 240b).**
 Mint N.H., well-centered, intense colors on fresh paper, Very Fine, exceptionally scarce in Mint N.H. condition, signed Champion, Scott \$1,450.00, SG £1,400 E. 500-750



137

- 137 S 1921-32, \$500.00 Orange & Dull Violet, "Specimen" Overprint (204S; SG 240ds). Lightly hinged, rich colors

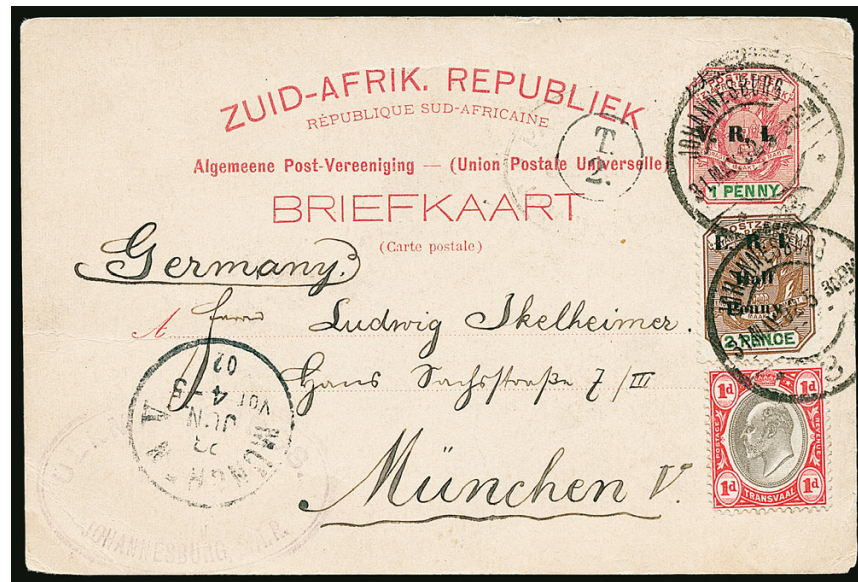
VERY FINE. A FRESH AND HANDSOME EXAMPLE OF THE 1921 \$500.00 KING GEORGE V SPECIMEN.

A choice alternative example considering the issued stamp catalogues \$75,000.00 (£75,000). Scott \$4,750.00. SG £5,000 E. 2,000-3,000

- 138 ★ **TOBAGO, Unused Collection.** On stockpages, 54 singles, two pairs, and a block of four, minor duplication including shades, First Issue to 5sh (including two 5sh), also a £1 Violet with "CC" watermark, range of later issues, some varieties such as 1886 ½p on 2½p Double Surcharge (SG 26b; R.P.S. certificate), slightly mixed condition including a few regummed, Fine-Very Fine appearance, high catalogue value, six certificates accompany(Website PDF) E. 1,000-1,500



140



139

- 139 ✉ **TRANSVAAL, 1902, May 31 Uprated 1p "V.R.I." Postal Card.** Used with ½p on 2p "E.R.I." and 1p King Edward VII (246, 253; SG 243, 245), tied by "Johannesburg 31 May 02" double-circle datestamps and addressed to Munich, Germany, "T 2" carrier marking and Munich arrival datestamp, card with minor edge wear, Very Fine, this card was written on the **same day as the Treaty of Vereeniging** which was a peace treaty immediately ending the Second Boer War and handing over Transvaal and the Orange Free State to Great Britain, additionally a scarce triple issue use and early use of the 1p Edward VII stamp E. 300-400

- 140 ★ **ZULULAND, 1894, £1 Violet on Red (23; SG 28).** Original gum, small h.r., wonderfully fresh color, well-centered, Very Fine, Scott \$675.00, SG £600 E. 300-400

WORLDWIDE STAMPS AND POSTAL HISTORY



142EX



143EX



144EX

- 141 ☒ **ALGERIA, Postal History Collection, 1939-1962.** Over 270 covers, most of which are neatly mounted and annotated (in French) on exhibition pages, includes WWII censored, several postage due uses (both inbound and outbound), inbound from several different countries, including French Sudan and Madagascar, various registered and airmail, unusual auxiliary markings, and more, much is Fine-Very Fine(Website Highlights PDF) E. 500-750
- 142 ★田 **ARGENTINA, 1899, 10-20p Allegory (139-142).** Blocks of four, 20p with imprint in top selvage, 10p with bottom selvage, original gum (1p with disturbed gum and 20p with dried gum), rich colors, one 1p stamp with shallow thin, bottom right 20p stamp with small inclusion, Fine, scarce in blocks, Scott as singles \$1,370.00.....(Photo Ex/Website PDF) E. 200-300
- 143 ★★田 **ARGENTINA, 1912-13, 1p-20p Agriculture (201-204).** Mint N.H. blocks of four with selvage at right or left, exceptionally fresh, nicely centered, \$5.00 with minor gum bend affecting two stamp, 10p with trivial gum wrinkle on one stamp, Very Fine, a difficult set to find in Mint Never-Hinged blocks, Scott as hinged singles \$1,256.00.....(Photo Ex/Website PDF) E. 500-750
- 144 S **ARGENTINA, 1930-31, ½c-50p Revolution, with “Muestra” Overprints (374S-398S).** Complete set of all 25 values, lightly hinged except ½c and 5c from 1931 Issue with slight gum disturbance, fresh colors, Very Fine.....(Photo Ex/Website PDF) E. 200-300



145EX

- 145 ★★ CAMEROUN, 1897, 3pf-50pf, Bern Printing (Michel 1B-6B). Mint N.H., brilliant colors, Very Fine set, only 800 such sets were produced for the U.P.U. office in Bern, each signed Bothe BPP, and with 1989 Eibenstein set certificate, Michel €5,000....
.....(Photo Ex/Website PDF) E. 750-1,000

CHINA



146



147



148EX

- 146 1878, 5c Orange, Thin Paper (3; Chan 3). Well-centered, partial red **Hankow Customs Mail Matter** oval postmark, single short perf at right, overall toning on reverse just shows through to front, otherwise Very Fine, Scott \$600.00 (without premium for the cancel)...
..... E. 300-400
- 147 1882, 3ca Brown Red (5; Chan 5). Well-centered, nearly complete **red Customs Shanghai** Aug. 3, 1882 circular datestamp, uncommonly fresh, with strong color and impression, Very Fine E. 200-300
- 148 ★ 1894, 1c-24c Dowagers (16-24; Chan 22-30). Original gum, h.r., fairly strong colors, 24c with minor gum crease, Fine-Very Fine set, Scott \$2,733.00
.....(Photo Ex/Website PDF) E. 500-750



149

- 149 ★田 1897, 30c on 24c Carmine, **Small Numerals** (37; Chan 46). Block of four with selvage at left, original gum, top stamps lightly hinged, **bottom stamps Mint N.H.**, brilliant color, top right stamp with tiny tear, Fine-Very Fine appearance, a fresh and desirable selvage block, Scott as hinged singles \$2,400.00 E. 750-1,000



150

- 150 ★ 1897, 5c on 5c Dull Orange, Large Numerals, 1½mm and 2½mm Spacing (42; 60; Chan 51, 69). Original gum, both bright and fresh, Very Fine, Scott \$625.00 E. 300-400



151EX

- 151 ★ 1897, ½c-\$5.00 Imperial Post (86-97; Chan 92-103). Original gum, h.r. or with some gum disturbance from hinge removal, 30c no gum, \$5.00 corner selvage single, fresh colors, Fine-Very Fine, Scott \$5,534.00(Photo Ex/Website PDF) E. 1,500-2,000



152EX

- 152 ★ 1897, ½c-\$1.00 Imperial Post (86-95; Chan 92-101). Original gum (30c disturbed), strong rich colors, Fine-Very Fine, Scott \$734.00(Photo Ex/Website PDF) E. 200-300

REMITTANCE CERTIFICATE.	
No. <u>1</u> General.	No. <u>1</u> <i>Tientsin</i>
IMPERIAL POST OFFICE.	
REMITTANCE.	FEE.
<p style="text-align: center;"> <i>Peking 1 January 1898.</i> </p> <p> THIS is to certify that the <i>unobliterated</i> Postage Stamps affixed hereon under the word REMITTANCE, namely, <i>Two</i> Stamps of a total value of <i>four</i> Dollars and <i>—</i> Cents, were purchased at this Office to-day, to be sent to <i>Tientsin</i> and there be redeemed at face value at the I.P.O. within Six Months; and that the <i>obliterated</i> Stamps affixed under the word FEE, namely, <i>Two</i> Stamps of a total value of <i>eight</i> Cents, represent the Commission charged. </p> <div style="display: flex; justify-content: space-between; align-items: center;"> <div style="width: 45%;">  </div> <div style="width: 45%; text-align: right;">  </div> </div> <p style="text-align: right; margin-top: 10px;"> <i>S. S. Kuearnados</i> Postal Officer. </p> <p style="font-size: small; margin-top: 10px;"> N.B.—Holders are warned that payment will be refused if the Stamps affixed hereto are detached, changed, soiled, or torn; if the Certificate be altered, defaced, or mutilated; if it is presented for payment at an Office other than that named in the body of the Certificate; or if it is not cashed before the expiry of Six Months. </p> <div style="display: flex; justify-content: space-between; align-items: center; margin-top: 10px;"> <div style="width: 45%;"> <p>To</p> <p>THE IMPERIAL POST OFFICE,</p> <p><i>Tientsin</i></p> </div> <div style="width: 45%; text-align: right;"> <p>Cents <u>8</u></p> </div> </div> <div style="display: flex; justify-content: space-between; align-items: center; margin-top: 10px;"> <div style="width: 45%;"> <p>\$ <u>4.00</u></p> </div> <div style="width: 45%; text-align: right;">  </div> </div>	

FIRST DAY OF USE OF THE IMPERIAL CHINESE REMITTANCE CERTIFICATE

153

1897, \$2.00 Orange & Yellow (96; Chan 102). Two singles originally forming a vertical pair but affixed in reverse orientation, intentionally uncanceled per postal regulations **on Imperial Post Office Remittance Certificate** originating in Peking **on January 1, 1898** which was the **inaugural day of use for the remittance service** for remittance in Tientsin, China 1897 4c Brown (89; Chan 95) vertical pair affixed at right paying the corresponding 8c commission fee (2%) and tied by blue “Peking 1 Jan 98” dollar chop cancel (with “N” in “Jan” reversed) with additional strike below, numbered “No. 1” from Peking at top left and “No. 1” in Tientsin at top right, signed by **E. Encarnacao** who was the Director of Posts in Peking, few minor vertical and horizontal file folds, one thru top \$2.00 and top 4c stamps

VERY FINE. A TRULY REMARKABLE FIRST DAY OF USE OF THE IMPERIAL CHINESE REMITTANCE CERTIFICATE FROM JANUARY 1, 1898, ESPECIALLY RARE USING THE 1897 \$2.00 ICP STAMPS. THIS IS THE EARLIEST OF THE LESS THAN 50 RECORDED REMITTANCE CERTIFICATES AND THE ONLY ONE KNOWN WITHIN THE FIRST MONTH OF USE. A NEW FIND TO CHINESE PHILATELY AND OFFERED FOR SALE THE FIRST TIME SINCE ITS ISSUANCE.

The Imperial Chinese Remittance System was introduced by Postal Circular No. 3 dated Nov. 17, 1897 with the first use set for Jan. 1, 1898. This new money order system was vital for the exchanging of money for an ever-expanding Chinese economy. Due to China's vast geographical area and population, this provided the safe movement of money through the post office. Regular postage stamps equaling the value of the remittance was affixed (and left uncanceled) and stamps equaling the 2% commission fee was cancelled at the originating post office.

The remarkable nature of this remittance certificate is highlighted by a few key points:

- a) To date, only 47 remittance certificates are recorded. An updated census can be found here: <http://filatelist.tripod.com/rc.html>
- b) This is the only known example used on the first day - January 1, 1898. The next recorded example is over a month later on Feb. 9 from Canton to Shanghai.
- c) The “No. 1” at top left and right indicate this was the first remittance used at either Peking or Tientsin. Remarkably, there are **no other examples known used in Peking** during the entire five year period of these certificates.
- d) Despite their desirability, there are over 20 examples using the \$5.00 Red Revenue. In contrast, **only two are known** using the \$2.00 ICP. The other example was used in Dec. 1898 which was a single used with \$2.00 ICP. A relatively small number of \$2.00 ICP stamps were printed (owing to their large catalogue value compared to the rest of the set) and many post offices never received a stock for use. Only one defective cover has been recorded (which hasn't been seen in over 40 years). While this certificate is not a cover, it is the **only known multiple franking** of a \$2.00 ICP on any document or cover.
- e) This example is signed by E. Encarnacao who was the Director of Posts in Peking. It is interesting to note that such a high ranking official signed this document - likely since it was the first example the Peking Post Office used. E. 20,000-30,000



- 154 ★ 1898, \$1.00-\$5.00 Flying Geese (107-109; Chan 117-119). Original gum, \$1.00 and \$5.00 with h.r., \$2.00 lightly hinged, bright colors, \$2.00 with trivial corner crease, Fine-Very Fine, Scott \$1,950.00(Photo Ex/Website PDF) E. 400-500
- 155 ★ 1898, \$5.00 Deep Green & Salmon (109; Chan 119). Part original gum, rich colors, Fine, Scott \$950.00 E. 300-400
- 156 ★ 1900-10, ½c-\$5.00 Imperial Post, Unwatermarked (110-122, 124-130; Chan 116-135). Original gum, most with h.r., some with slight gum glazing, a few values with faintly toned perf tips, the key \$5.00 is fresh and lightly hinged, a couple shade varieties, Fine-Very Fine, Scott \$2,004.00(Photo Ex/Website PDF) E. 500-750
- 157 ★ 1900-10, ½c-\$5.00 Imperial Post, Unwatermarked (110-122, 124-130; Chan 116-135). Part original gum or no gum (ten values no gum including the \$2.00), a few minor flaws, otherwise a Fine set, Scott \$2,004.00(Photo Ex/Website PDF) E. 300-400
- 158 ★ 1900-06, \$5.00 Deep Green & Salmon, Unwatermarked (122; Chan 128). Original gum, h.r., bright colors, fresh and Fine, Scott \$875.00 E. 300-400
- 159 ☒ 1905-10, 2c Green, 4c Vermilion, 10c Ultramarine (124, 126, 129). Two covers from Canton to New York, one with 2c and two 4c, other with two 10c, tied by circular postmarks, both with red oval merchant's handstamp on front or reverse, sent through the Japanese Post Office in Canton, both with several backstamp including violet Moji, Japan transit, covers with minor wear, Fine(Photo Ex/Website PDF) E. 300-400
- 160 ★ 1912, ½c-\$5.00 Statistical Department Overprints (146-160; Chan 152-166). H.r., 20c, \$1.00 and \$2.00 part original gum, strong colors, Fine-Very Fine, Scott \$1,827.00.....(Photo Ex/Website PDF) E. 500-750



- 161 ★ 1912, ½c-\$5.00 Statistical Department Overprints (146-160; Chan 152-166). Most with h.r., 7c and 50c part original gum, \$2.00 slightly toned gum, Fine-Very Fine, Scott \$1,827.00.....(Photo Ex/Website PDF) E. 500-750
- 162 ★ 1912, ½c-\$2.00 Statistical Department Overprints (146-159; Chan 152-165). H.r., 3c, 20c and 30c with slight perf toning, Fine-Very Fine, Scott \$1,002.00(Photo Ex/Website PDF) E. 200-300
- 163 ★ 1912, ½c-\$5.00 Republic Overprints, Waterlow & Sons (163-177; Chan 169-183). Complete set plus extra \$1.00-\$5.00 values, h.r., a few with disturbed gum, one \$5.00 (with selvage) no gum, a few minor imperfections, Fine-Very Fine appearance, Scott \$3,640.00.....(Photo Ex/Website PDF) E. 500-750
- 164 (★) 1912, ½c-\$5.00 Republic Overprints, Waterlow & Sons (163-177; Chan 169-183). Unused, some (including the high values) regummed, strong colors, Fine-Very Fine, Scott \$2,095.00(Photo Ex/Website PDF) E. 300-400
- 165 ★ 1912, \$1.00-\$5.00 Waterlow & Sons Overprints (175-177; Chan 181-183). \$1.00 and \$2.00 with part disturbed original gum, \$5.00 with h.r., rich colors, \$5.00 with shallow thin, Fine-Very Fine appearance, Scott \$1,625.00(Photo Ex/Website PDF) E. 300-400
- 166 ★ 1912, \$2.00 Brown Red & Yellow (176; Chan 182). Original gum lightly hinged, excellent centering, intensely rich colors, Extremely Fine, a challenging stamp to find in this choice quality, Scott \$525.00 E. 300-400
- 167 ★ 1912, 1c-\$5.00 Sun Yat-sen (178-189; Chan 184-195). Most lightly hinged, \$2.00 with minor h.r., 8c and \$1.00 with minor bend, 1c and 16c with faint overall toning, Fine-Very Fine, Scott \$1,984.00(Photo Ex/Website PDF) E. 500-750



168EX

- 168 ★ 1912, 1c-\$5.00 Sun Yat-sen and Yuan Shih-kai (178-187, 189-201; Chan 184-193, 195-207). Complete less the \$2.00 Sun Yat-sen, h.r., some low values with slightly disturbed gum, a few minor gum wrinkles or bend, No. 178 with tiny thin, Fine-Very Fine, Scott \$2,167.00 (Photo Ex/Website PDF) E. 400-500



169EX



170EX

- 169 ★ 1912, 1c-\$5.00 Yuan Shih-kai (190-201; Chan 196-207). H.r., fresh colors, Fine-Very Fine, Scott \$1,183.00..... (Photo Ex/Website PDF) E. 400-500
- 170 ★ 1912, 1c-\$5.00 Yuan Shih-kai (190-201; Chan 196-207). Most lightly hinged, rich colors, 3c and 20c with small faults, still Fine-Very Fine, Scott \$1,183.00 (Photo Ex/Website PDF) E. 400-500



171EX

- 171 ★★ 1913, ½c-\$10.00 Hall of Classics, London Printing (202-220; Chan 206-226). Mint N.H., gorgeous rich colors, \$5.00 with slightly rounded corner perf, \$10.00 with light finger-print on gum, Fine-Very Fine, a challenging set to find in Mint Never-Hinged condition, Scott as hinged \$4,238.00 (Photo Ex/Website PDF) E. 1,500-2,000



- 172 ★ 1913, \$10.00 Yellow Green & Black, London Printing (220; Chan 226). Minor h.r., lovely rich colors, a Very Fine example of this high value, Scott \$2,350.00 E. 500-750
- 173 ★ 1915, \$5.00 Scarlet & Black, First Peking Printing (238; Chan 246). H.r., attractive colors, well-centered, color slightly oxidized, otherwise Very Fine, Scott \$800.00 E. 200-300
- 174 ★★田 1921, 1c-10c Post Office Anniversary (243-246; Chan 276-279). 128 sets in Mint N.H. blocks of four, Fine-Very Fine, from an old-time holding, Scott as hinged \$3,648.00
.....*Not illustrated* E. 750-1,000
- 175 ★★ 1923, ½c-\$20.00 Second Peking Printing (248-269). Mint N.H. except 4c and \$5.00 lightly hinged, bright and fresh, 1c (cat. 80c) with crease, Fine-Very Fine, Scott as hinged \$2,216.00.....(Photo Ex/Website PDF) E. 1,000-1,500
- 176 ★ 1923, ½c-\$10.00 Second Peking Printing (248-268). H.r.'s, 8c and 20c with slight gum toning, otherwise Fine-Very Fine, Scott \$1,116.00 ... (Photo Ex/Website PDF) E. 300-400
- 177 ★★田 1938, \$1.00-\$5.00 Chung Hwa (344-346; Chan 366-368). Mint N.H. top right corner selva blocks of four with accounting numbers at top, well-centered and exceedingly fresh, Very Fine and attractive positional blocks, the \$5.00 value in particular is difficult to find in unused blocks, as it was released in Swatow without advanced notice and most were used for bulk mailing, Scott as hinged singles \$1,009.00.....
.....(Photo Ex/Website PDF) E. 400-500
- 178 ★★ 1944, 50c + 50c, 33c + 33c War Refugees, Surcharge Omitted (B4 var, B8 var; Chan 815a, 818a). Mint N.H., bright and fresh, Very Fine, Chan (2010) \$500.00
.....(Photo Ex/Website PDF) E. 200-300



179EX

- 179 ★★ Sinkiang, 1924, ½c-\$20.00 Overprints, Second Peking Printing (47-68; Chan PS47-PS70). Mint N.H., bright colors throughout, Fine-Very Fine, a particularly fresh set that is not easy to find in Mint Never-Hinged condition, Scott as hinged \$990.00(Photo Ex/Website PDF) E. 500-750

- 180 ★ Hankow Local Post, c. 1893 50c Violet on Yellow Dog (Livingston T14). Original gum, paper h.r., large margins, fresh color

VERY FINE EXAMPLE OF THE HANKOW 50-CENT DOG LOCAL POST. LESS THAN TEN ARE THOUGHT TO EXIST.

This was produced locally in Hankow by the same printer who printed Hankow's first issue (Nos. 1-10) Most of the literature suggests this was used as a tax stamp (a few cancelled copies exist), though it may have been a proposed design that was rejected due to the English inscriptions not fully translated into Chinese.

An essential rarity for the Dog topical collector. Ex W.L. Kullman, who purchased it in the 1973 H.R. Harmer's sale of the Lyons Livingston stock. Kullman retained it after selling the rest of his Local Post collection ... E. 1,500-2,000



180

CHINA COLLECTION LOTS

- 181 **China Accumulation.** Many hundreds of items, diverse group of late 19th Century and 20th Century (including Japanese Occupation and Taiwan), better individual items with write-ups, 1894 Chinkiang Local Post sheets and large multiples (some with considerable curling), a few covers, several hundred sorted in glassine envelopes, and more, definitely worth taking a look(Website Highlights PDF) E. 750-1,000
- 182 **China Collection Balance.** Various 19th Century and early 20th Century stamps on album pages, a few Large and Small Dragons, unused Dowagers to 5c, 20th Century includes the first two Air Post sets, some Shanghai locals, and Manchukuo, slightly mixed quality, much is Fine-Very Fine(Website PDF) E. 500-750
- 183 **China Accumulation.** Many hundreds (probably well over 1,000) mostly used stamps loose in a box, these were clipped from envelopes by a family who lived in China, from the 19th Century through about 1950, better stamps include at least three Red Revenues, a large number of Coiled Dragons, with a wide range of cancels, also some European Offices in China, with several Kiauchau, mixed condition, worth a very careful look(Website Highlights PDF) E. 500-750
- 184 ★ **China Unused Group.** A few hundred in glassines and a stockpage, 1897-1949, mostly pre-1940 with Definitives and Commemoratives in the 1912-33 era, including Airmails, majority Mint N.H., Fine-Very Fine(Website Highlights PDF) E. 400-500

- 185 ☒ **China 20th Century Covers.** 24 items, 1908-1950s, two with Coiled Dragons, including one on very large (approximately 320 x 225mm) cover from Peking to Shanghai, some with consulate corner cards, six 1937 Hong Kong-San Francisco first flight covers, some early P.R.C., one document with revenue stamps, a few Hong Kong and one Japan, mixed condition, all are from and old family correspondence and are offered to the philatelic market for the first time(Website PDF) E. 750-1,000
- 186 ☒ **China 20th Century Cover Group.** 30, range of commercial, airmail and postal stationery usages, including Japanese Occupation, Fine-Very Fine.....(Website PDF) E. 300-400
- 187 **China Postal Savings Stamps.** 1919-44, over 350 mostly unused on stockpages, including 30 early Junk, London SYS and Martyrs, duplication with shade and perforation varieties, Fine-Very Fine(Website PDF) E. 200-300
- 188 ★ **China Provinces Unused Lot.** 1921-33, majority from Sinkiang, 1921 Postal Anniversary set x30 (Scott 39-42), and seven blocks of four of the 10c value (Scott 42), quantities of the \$1.00 Red Commemoratives, including six No. 73, twelve No. 81, twelve Yunnan No. 24, and more, most Mint Never-Hinged, Scott (as hinged) over \$8,000.00(Website Highlights PDF) E. 1,500-2,000
- 189 ★★ **China (Taiwan) Unused Group.** A few hundred mostly sorted in glassines, includes No. 1016 block of six, No. 1064-69, No. 1355-58 in matched corner selvage singles, nearly all Mint N.H., Fine-Very Fine(Website Highlights PDF) E. 300-400

COLOMBIA



190EX

- 190 ★★田 **1935, 2c-10p Olympics (421-436).** Mint N.H. blocks of four, exceptionally well-centered, bright colors and wonderfully fresh throughout
EXTREMELY FINE. A CHOICE MINT NEVER-HINGED SET OF BLOCKS OF THIS POPULAR COMMEMORATIVE SET.
Each signed A. Diena. Scott as hinged singles \$4,900.00(Photo Ex/Website PDF) E. 2,000-3,000



191



192

- 191 ☒ **1920, 10c Red Brown, Air Post - April 16, 1922 Flight (C11C; Sanabria 16).** Used with National 3c tied by boxed Medellin Apr. 16, 1922 datestamp and additional oval handstamp on cover to Medellin, additional Medellin Apr. 16 backstamp, Very Fine, particularly scarce with the 10c Red Brown, this contested flight has two varying reports, one indicates pilot Guicciardi Ferruccio arrived in Medellin on Apr. 16 after he got lost enroute and suffered crashes and delayed for weeks, another report notes he left on Apr. 16 and arrived in Medellin on Jul. 26, regardless a fascinating flight ripe for further research..... E. 300-400
- 192 ☒ **1920, 30c Black on Rose - Dec. 1922 Barranquilla-Bogota Scheduled Flight (C14).** Tied by lightly struck boxed Barranquilla handstamp (in transit), cover **originating in Reetz, Germany** with 3m block of four and 10m tied by "Reetz 12.11.22" circular datestamps and addressed to Barranquilla, then forwarded to Bogota, Bogota Dec. 21 arrival backstamp, Very Fine, a rare incoming combination cover, while the consular overprint "system" had been in place, few first issues are known from Germany, **less than five are believed to exist**, ex Gebauer..... E. 500-750



193

- 193 ☒ **1920, 50c Pale Green - Oct. 20, 1920 Barranquilla-Girardot Experimental Flight (C16).** Sheet margin at left, tied by well-struck violet "Servicio Postal Aereo, S.C.A. de T.A." oval "Colibri" (hummingbird) cancel, used with National 1c and 2c tied by light Girardot Oct. 20 circular datestamp on corner card cover to Bogota (address erased), Bogota Oct. 21 and 22 arrival backstamps, cover with light file fold thru 50c of little consequence

EXTREMELY FINE AND CLEAR STRIKE OF THIS RARE "COLIBRI" CANCEL. EASILY ONE OF THE FINEST OF THE SEVEN COVERS WITH THIS DISTINCTIVE PICTORIAL CANCEL KNOWN.

This flight from Barranquilla to Girardot was flown using a Junkers F-13 named "Colombia". This was the only flight requiring a 50c surcharge. A contract was eventually signed with the Colombian government setting the fee at 30c. The "Colibri" handstamp was only used on this flight.

We record five from major collections - 1) ex Friedman, 2) ex Peinado, 3) ex Boonshaft, Johnson and Fletcher, 4) ex Goeggel (offered here) and 5) ex Ortiz. There is another example listed in Fletcher on pg. 110 and we believe there is one further example.

Ex Goeggel E. 2,000-3,000

- 194 E **1920, 30c Black on Rose, "G. Mejia" Signature, Signature Trial in Black (CLEU1 var).** Top right corner sheet margin, unused (no gum), small area of additional ink (from signature) causing minor pinhole erosion, small thin mostly in top margin, Very Fine appearance, **only three "G. Mejia" manuscript trial overprints are known**, two on the 30c (in differing inks) and one 50c, all three are offered in this sale, these entered the philatelic market when offered in a private sale of SCADTA archives E. 1,000-1,500



194



195

- 195 E **1920, 30c Black on Rose, “G. Mejia” Signature, Signature Trial in Gray Blue (CLEU1 var).** Sheet margin at right, h.r., bold color, Fine, **only three “G. Mejia” manuscript trial overprints are known**, two on the 30c (in differing inks) and one 50c, all three are offered in this sale, these entered the philatelic market when offered in a private sale of SCADTA archives, with 2008 Colomphil certificate E. 2,000-3,000



196

- 196 E **1920, 50c Green, “GM” Signature, Signature Trial in Black (CLEU2a).** Sheet margin at bottom, h.r., manuscript overprint inverted, vertical crease

VERY FINE APPEARANCE. THIS IS THE UNIQUE MANUSCRIPT “GM” IN BLACK TRIAL OVER-PRINT ON THE 50-CENTAVOS. TWO ARE KNOWN ON THE 30-CENTAVOS — ALL THREE ARE OFFERED IN THIS SALE.

These entered the philatelic market when offered in a private sale of SCADTA archives. With 2008 Colomphil certificate E. 1,500-2,000



197

- 197 **1920, 50c Green, G. Mejia Signature in Red (CLEU2).** Cancelled by violet SCADTA Barranquilla handstamp, used with National 3c horizontal pair, tied by red boxed Bogota datestamp on cover front only to Bogota, "Apr. 23, 1922" datestamp, 50c with minor toned spot at top, front with two vertical file folds, one which affects 50c

FINE AND EXCEPTIONALLY RARE COVER FRONT WITH THE 50-CENTAVOS "G MEJIA" CONSULAR OVERPRINT. ONLY THREE COVERS OR COVER FRONTS ARE RECORDED.

In order to provide and encourage foreign air post service to Colombia, SCADTA made its stamps available at consular offices around the world. Gonzalo Mejia established an office in New York and signed stamps "G Mejia" to designate use from the United States. Two covers were used with the first for the sending to the SCADTA office in Barranquilla. The inner cover bore the consular stamp and a National stamp, such as the example offered here. The outer cover was removed in Barranquilla with the inner cover forwarded onwards by SCADTA.

We have recorded three covers or fronts. There is 1) Dec. 19, 1921 - unique 30c (2) and 50c combination, 2) Apr. 23, 1922 - 50c single on cover front (offered here), 3) 50c single (illustrated in Fletcher, pg. 77).

With 2003 Sismondo certificate E. 3,000-4,000

- 198 ★ **1921, 30c Rose, "Servicio Postal Aereo de Colombia, PANAMA" Overprint (Sanabria 45).** H.r., light but clear overprint, well-centered, bold color, pinpoint thin

EXTREMELY FINE APPEARANCE. THIS IS THE UNIQUE UNUSED EXAMPLE OF THE 30-CENTAVOS WITH THE PANAMA SCADTA OVERPRINT. AN IMMENSE CONSULAR OVERPRINT RARITY.

This overprint, known on the 30c and 50c, were one of the first experiments with consular overprints outside of New York. They were made available for use in the SCADTA office in Panama in 1921. Only four examples of this overprint have been recorded to date, the other three in used condition with no covers known. Only one unused example of the 50c value has also been recorded (ex Cole, Gebauer and Johnson). Unlisted in Scott and mentioned in Sanabria as unique.

Ex Cole and Atherton. Signed Sanabria and Kessler. With 1970 P.F. certificate E. 2,000-3,000



198



199



200



202EX



201



203



205



206EX



207



204EX



209



208EX



210

- 199 ★ **1921, “Valor 10 Centavos” on 50c Pale Green, Inverted “1” of “10”, Air Post Surcharge (Colomphil 2; Scott C18).** Minor h.r., sheet margin at left, minor creasing in margin at bottom and small thin, Very Fine appearance, Fletcher records four unused examples and Colomphil states eleven known, Scott \$1,900.00..... E. 300-400
- 200 ☒ **1921, “Valor 10 Centavos” on 50c Pale Green, Inverted “1” of “10”, Air Post Surcharge (Colomphil 2; Scott C18).** With sheet margin at top and left, tied by light Girardot oval handstamp and “Navegacion Aerea, Neiva” two-line handstamp, both with additional strikes on reverse, used with National ½c horizontal strip of three and three singles, on cover to Dr. Behr-Heyder in Bogota, Bogota May 16, 1921 boxed arrival cancels tying ½c stamps, Very Fine, **only ten covers** have been recorded E. 200-300
- 201 **1921, (Hand) “Vaolr 10 Centavos” (Hand) on 50c Pale Green, Misspelled “Valor”, Air Post Surcharge (Colomphil 4; Scott C19b).** Horizontal pair, pos. 1-2 with sheet margin at top and left, lightly struck violet “Sociedad Colombo Alemana de Transportes Aereos” of Bogota, typical rough perfs at bottom, Fine and rare, **only sixteen used** examples are known (nine of which are covers), this is the **only recorded multiple**, ex Goeggel, signed A. Brun, Scott as two singles \$1,500.00 E. 300-400
- 202 ☒ **1921, “Valor \$0.10” on 50c Pale Green, Air Post Surcharge (Colomphil 5; Scott C24C).** Two covers, one with Red and other with Violet surcharges, each with light Girardot oval handstamp, both cancelled by “Navegacion Aerea, Neiva” handstamp with strikes on reverse, Red used with National ½c pair and 2c, Violet used with National ½c (2) and 1c (2), both addressed to Behr-Heyder in Bogota, Very Fine and attractive pair of covers, these represent **two of the nine covers** recorded, only four of which are from Neiva to Bogota via Girardot, Scott \$2,000.00**(Photo Ex)** E. 400-500
- 203 **1921, “30 cent.” on 10c Yellow (Colomphil 26c; C37).** Used with National 3c (faulty), tied on small piece of mourning cover by violet Bogota SCADTA cancel, blue “May 5, 1922” handstamp below, stamp with couple toned perf tips, otherwise Fine and scarce, **only 17 used examples** have been recorded of all types, eleven of which are covers, with 2004 Sismondo certificate, Scott \$575.00 E. 200-300
- 204 P☒ **1921, 10c-5p Third Issue Air Post, Imperforate Proof Multiples (C26P-C35P).** Set of nine values (60c not known), missing just 5c for completion, each either a **block or strip of four**, without gum, large margins with sheet margin on at least one side, few values with inconsequential toned spots and/or minor creasing, still Fine-Very Fine group, believed to be the **largest known** multiple for each value**(Photo Ex/Website PDF)** E. 400-500
- 205 ★★☒ **1921, 5p Olive Green, Third Issue Air Post (C35).** Mint N.H. bottom right corner selvage block of four, pos. 19-20/24-25, bottom left stamp showing the constant “**Moon**” flaw to the left of plane’s nose and bottom right stamp showing “Dot between OM of Colombia”, Very Fine, rare as a block showing these constant varieties, Scott Retail as simply four hinged singles \$1,300.00 E. 300-400
- 206 ★☒ **1929, 1p-5p Columbus’ Ship, Air Post (C64-C67).** Complete panes of 25, slightly mount disturbed original gum, bold colors, Fine-Very Fine and scarce in complete panes, Scott Retail as singles \$4,312.50.....**(Photo Ex/Website PDF)** E. 500-750
- 207 ★☒ **1930, 30c on 1p Simon Bolivar Air Post, Triple Surcharge (C82 var; Sanabria 125b).** Block of four with selvage at bottom, slightly mount disturbed original gum, bold color, clear tripling of surcharge, minor splitting between stamps and selvage, Very Fine, a rare error multiple E. 500-750
- 208 ★☒ **1932, 5c-5p Air Post and Air Post Registration (C83-C95, CF4).** Complete set of panes, 5c-80c in panes of 50 and 1p-5p in panes of 25, plus 20c Registration Issue, each either with original interleaving still affixed or slight disturbed gum from removal, some minor perf separation on a couple panes, otherwise Fine-Very Fine, an exceptionally rare set of complete panes, Scott Retail as singles alone \$9,115.00.....**(Photo Ex)** E. 1,000-1,500
- 209 ★☒ **1932, 40c Dull Violet, Air Post, Inverted Overprint (C88 var; Sanabria 131a).** Block of six with selvage at bottom, top middle stamp lightly hinged, others Mint N.H., well-centered, Very Fine, **only 50 were printed**, this believed to be the largest multiple, ex Johnson..... E. 200-300
- 210 ★☒ **1932, 1p Blue, Air Post, Imperforate (C92 var; Sanabria 135a).** Top right corner margin block of four, slightly mount disturbed original gum, h.r. in top margin only, Very Fine and rare, **only one sheet of 25 was printed**, this likely the largest multiple still in existence, each stamp signed E. 300-400

212



211EX

- 211 **COSTA RICA, 1946, 5c-5col St. John Hospital, "Muestra" Overprints (C128S-C140S).** Mint N.H. bottom right corner selvage blocks of four, with additional 10c single and 15c pair, Very Fine.....(Photo Ex/Website PDF) E. 200-300
- 212 **FAROE ISLANDS, 1940-41, 20o on 1o to 60o on 60o Surcharges (2-6; Facit 4-8).** Singles of each, tied by "Thorshavn 13.8.43" double-circle datestamps on registered cover to Chicago Ill., censored tape at sides, New York transit and Chicago arrival backstamps, Very Fine, despite the philatelic use, this is a scarce cover with the complete set of the 1940-41 Surcharge issue, catalogued simply as used singles \$507.50, Facit SK 3,600 E. 200-300

FRANCE



213

- 213 ★ **1849, 25c Blue on Yellowish (6b; Yvert 4a).** Original gum, lightly hinged, large to full margins all around, intense shade on fresh paper, truly minute pinpoint spot of yellowish gum in right margin (not mentioned on certificate)

STILL VERY FINE AND SCARCE ORIGINAL-GUM EXAMPLE OF THE 25-CENTIMES IN THE DARK BLUE SHADE.

Signed A. Brun. With 2020 Roumet certificate. Scott \$6,250.00. Yvert €9,000 E. 2,000-3,000



- 214 E **1850s-70s Essay Group.** Eleven essays of the issued designs in various colors, plus undenominated stationery essay, incl. mostly 1853 Napoleon "Empire France" and 1863 Napoleon Issues, plus a couple others, mostly large margins, fresh and Very Fine group (Photo Ex/Website PDF) E. 500-750
- 215 ★ **1863-1870, 1c-80c "Rothschild" Imperforate Re-Issues (29b-36b; Yvert 25c-32b).** Complete set of eight values, each with original gum, either lightly hinged or small h.r., mostly large margins except 20c and 40c close on one side, 30c sheet margin at right, all except 4c, 10c and 30c with toned spots, otherwise Very Fine appearance, these stamps were made exclusively for the famous banker and financier for use on his correspondence, Scott \$2,660.00, Yvert €5,240 (Photo Ex/Website PDF) E. 500-750
- 216 ★田 **1870, 80c Rose on Pinkish (48; Yvert 49).** Block of four, full original gum, lightly hinged, large to full margins, vibrant color, Very Fine and handsome, Yvert €3,500 E. 750-1,000
- 217 ★ **1876, 15c Gray Lilac on Grayish, Type II (80; Yvert 77).** Bottom right corner selva single, original gum, lightly hinged, wonderfully bright and fresh, minute toned spot on gum, still Very Fine, signed A. Brun, Scott \$675.00, Yvert €1,200 E. 200-300
- 218 ★ **1900-29, 1c-20fr Type Blanc (109-132; Yvert 107-123, 143-145, 206-208, 233, 240).** Mostly lightly hinged, few h.r., missing 7½c (No. 114, catalogues \$0.60) which was released later, 10c and 25c with both Types (116a, 119a), No. 116 and 120 with millesime selva, wonderfully fresh, well-centered overall, Fine-Very Fine, No. 119a and 126 signed A. Brun, Scott \$1,765.00, Yvert €2,742 (Photo Ex/Website PDF) E. 500-750
- 219 ★★ **1925, 20fr Philatelic Exhibition Souvenir Sheet (226; Yvert Bloc 1).** Mint N.H., bold color, small spot on gum, otherwise Very Fine, Scott \$3,750.00, Yvert €5,500 E. 500-750



- 220 P **1945, 100fr Roosevelt “Aide a la France” Large Die Proofs, Unissued Air Post.** Five large die proofs, die sunk on cards measuring approx. 177 x 217mm, colors incl. Black, Brown, Blue, Green and Magenta, each signed “L. Verron” who was commissioned to produce this stamp which was never issued, Very Fine and scarce group(Photo Ex/Website PDF) E. 500-750
- 221 ★★ **1949, 25fr Baudot, Error “1848” Instead of “1845” (627 var; Yvert 846A).** Mint N.H. top right corner selvage single, perfect centering, Extremely Fine Gem, the error was discovered before the stamps were distributed to post offices, only a small number exist, Yvert €4,350 E. 750-1,000
- 222 ★ **1917-19, 2c+3c to 5fr+5fr War Orphans Semi-Postal (B3-B10; Yvert 148-155).** Lightly hinged or minor h.r., unusually well-centered, fresh colors, 50c with minor toned spot, Very Fine, Scott \$2,521.00, Yvert €3,260(Photo Ex/Website PDF) E. 400-500
- 223 **France Comprehensive Collection.** To 1980 in four Lindner hingeless albums, classic stamps mainly used, with higher-cataloguing stamps, some duplication including four of the 5fr Napoleon, from the later 19th Century there is more unused, and the 20th Century is all unused and with a high degree of completion, including souvenir sheets, Semi-Postals complete, Air Post lacking only the Ile de France set, other useful Back-of-Book, sprinkled throughout are varieties, Specimens, imperforate pairs, and more, early issues in somewhat mixed quality, though there are several attractive four-margins examples, much of the 20th Century Fine-Very Fine(Website Highlights PDF) E. 4,000-5,000
- 224 **France Small Balance.** On homemade pages, with 1853 Napoleon “Empire Franc” and 1863-70 Issues used singles, seven covers incl. Balloon Montes datelined Dec. 31, 1870 on “Gazette des Absents”, plus a few better unused singles such as Nos. 76 and 79 (possibly reperfed, signed Brun), 137, B11 (Mint N.H.) and J24 (possibly regummed, signed Brun), and some others, mostly Fine-Very Fine(Website PDF) E. 750-1,000
- 225 ☒ **Alsace & Lorraine Postal History Exhibition Collection, 1925-1939.** Over 100 covers or cards on neatly written-up exhibition pages, excellent variety, with cancels, railways, money letters, registered, airmail including a Zeppelin flight, rural post offices, parcel post and more, Fine-Very Fine, a nice basis on which to expand, ex Stanley Luft(Website PDF) E. 300-400

FRENCH OFFICES IN CHINA



226



227



228EX

- 226 ★ **1904-05, 4c Claret on Bluish (47A; Yvert 64A).** Lightly hinged, precise centering, deep rich color, Extremely Fine, a pristine example of this key stamp of the set, signed A. Brun, Scott \$975.00, Yvert €1,000 E. 300-400
- 227 ★ **Canton, 1901, 5c Green on Greenish (2A; Yvert 4).** H.r., fresh color, well-centered, Very Fine, the scarce key stamp of the Canton issues, signed A. Brun and others, Scott \$600.00, Yvert €650 E. 200-300
- 228 ★ **Canton, 1903-04, 1c-5fr Overprints (15-30; Yvert 17-32).** Mostly lightly hinged, couple with minor h.r., 50c with selvage at right, fresh colors, Fine-Very Fine, 50c signed A. Brun, Scott \$787.50, Yvert €920(Photo Ex/Website PDF) E. 200-300



229



230



231

- 229 **Hoi Hao, 1901, 15c Blue (6; Yvert 7).** Tied on small piece by neat 1902 double-circle datestamp, bold color, Very Fine, only 450 printed, signed A. Brun, Scott \$800.00, Yvert €900 E. 200-300
- 230 ★ **Hoi Hao, 1901, 1fr Bronze Green on Straw (14; Yvert 14).** H.r., warm color, well-centered, Very Fine, signed A. Brun, Scott \$800.00, Yvert €1,000 E. 200-300
- 231 ★ **Hoi Hao, 1901, 5fr Red Lilac on Lavender (15; Yvert 15).** H.r., excellent centering, fresh color, Very Fine and scarce, signed A. Brun, Scott \$800.00, Yvert €1,000..... E. 200-300



232EX



233EX



234

- 232 ★ **Hoi Hao, 1903-04, 1c-5fr Overprints (16-31; Yvert 16-31).** Lightly hinged or h.r., fresh colors overall, Fine-Very Fine, 5fr signed A. Brun, Scott \$625.50, Yvert €660.....(Photo Ex/Website PDF) E. 200-300
- 233 ★ **Mongtzeu, 1903-04, 1c-5fr Navigation & Commerce (1-15; Yvert 1-16).** Lightly hinged or h.r., wonderfully fresh colors, well-centered overall, Fine-Very Fine, a scarce complete set, 25c, both 50c and 5fr signed A. Brun, 1fr signed Marquet, Scott \$1,814.00, Yvert €2,010.....(Photo Ex/Website PDF) E. 500-750
- 234 ★ **Mongtzeu, 1903, 50c Carmine on Rose (11; Yvert 12).** Horizontal pair with selvage at top, barely hinged (if at all), bright color, well-centered, Very Fine and choice pair, signed A. Brun, catalogued as singles, Scott \$880.00, Yvert €1,030 E. 200-300

FRENCH COLONIES



235EX



236



237



238EX

- 235 ★ **ANJOUAN, 1892-1907, 1c-1fr Navigation & Commerce (1-19; Yvert 1-19).** Mostly lightly hinged, couple with small h.r., wonderfully fresh, Very Fine, a surprisingly scarce set, Scott \$631.00, Yvert €675.....(Photo Ex/Website PDF) E. 200-300
- 236 **BENIN, 1892, 75c on 15c Blue, Red Surcharge (18; Yvert 16).** Fresh color, neat 1893 circular datestamp, Very Fine and scarce, signed A. Brun, Scott \$600.00, Yvert €700 E. 200-300
- 237 (★) **BENIN, 1892, 75c on 15c Blue, Black Surcharge (19; Yvert 17).** Unused (no gum), fresh color, particularly well-centered, Very Fine, an exceptionally rare unused stamp with only 100 printed and only a tiny fraction still in existence, many of which were used, signed Roumet, Scott \$3,500.00, Yvert €4,300 E. 750-1,000
- 238 ★ **CAMEROUN, 1915, 1c-2fr "Corps Expeditionnaire, Franco-Anglais, Cameroun" Overprints (101-115; Yvert 38-52).** Complete except for the 10c rarity, each with colonial gum as always, exceptionally fresh overall with bright colors, Very Fine, each value signed A. Brun, Scott \$2,605.00, Yvert €2,885(Photo Ex/Website PDF) E. 750-1,000



239



240



241

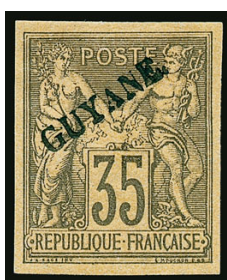


242

- 239 ★ **DAHOMÉY, 1912, 10c on 50c Brown, Name in Red (40; Yvert 41).** Lightly hinged, bright and fresh, Very Fine, the key stamp to the colony and scarce with only 450 overprinted, signed J.F. Brun, Scott \$1,125.00, Yvert €1,250 E. 400-500
- 240 ★ **DAHOMÉY, 1912, 10c on 50c Brown, Name in Red (40; Yvert 41).** Minor h.r., fresh colors, Very Fine, the key stamp to the colony and scarce with only 450 overprinted, signed Miro, Scott \$1,125.00, Yvert €1,250 E. 400-500
- 241 ★ **DIEGO-SUAREZ, 1892, 60c Black, Postage Due (J12; Yvert TT12).** Bottom right corner sheet margin, original gum, h.r., bold color and crisp impression, Extremely Fine Gem, a remarkable example of this scarce stamp of which only 150 were printed, signed A. Brun, Scott \$1,200.00, Yvert €1,250 E. 400-500
- 242 ★ **FRENCH GUIANA, 1886, 5c on 30c Brown on Yellow (9; Yvert 7).** Original gum, h.r., large even margins all around, warm shade, Very Fine, it is believed only 300 were produced, and this is one of the very few that still retains its original gum, signed A. Brun, catalogue value as no gum, Scott \$1,500.00, Yvert €1,700..... E. 400-500



243



244



245

- 243 ★ **FRENCH GUIANA, 1892, 2c Green on Greenish (12; Yvert 11).** Original gum, lightly hinged, large margins, strong color on fresh paper, Very Fine and rare, original gum examples are exceptionally scarce, signed A. Brun, catalogue values as no gum, Scott \$850.00, Yvert €1,000..... E. 300-400
- 244 ★ **FRENCH GUIANA, 1892, 35c Black on Orange (14; Yvert 12).** Original gum, h.r., large margins all around, deep rich color on fresh paper, sharp impression, Very Fine and choice, a rare stamp, particularly with original gum, signed A. Brun, catalogue values as with no gum, Scott \$2,850.00, Yvert €3,500 E. 1,000-1,500
- 245 **FRENCH MOROCCO, 1903, 5c and 10c Postage Dues, with "P.P." Handstamp (24-25; Yvert 18-19).** Singles of each, affixed to small piece, fresh colors, Very Fine and scarce, only 150 of 5c and 300 of 10c were printed, these were only used on Oct. 10, 1903 with the boxed "P.P." serving as a cancel, each signed A. Brun, Scott \$4,000.00, Yvert €3,500 E. 750-1,000



246



248



249



250EX

- 246 **FRENCH SUDAN, 1894, 15c on 75c Carmine on Rose (1; Yvert 1).** Tied in small piece by light double-circle datestamp, bold color, well-centered, Very Fine and surprisingly scarce stamp, Scott \$2,300.00, Yvert €2,500 E. 750-1,000



247

- 247 ★ **GABON, 1889, 15c on 30c Black (12; Yvert 12).** Original gum, lightly hinged (mostly in margin), huge margins including **sheet margin at right**, intense shade and impression
EXTREMELY FINE GEM. EASILY ONE OF THE FINEST ORIGINAL-GUM EXAMPLES OF THE 1889 15-CENTIMES ON 30-CENTIMES SURCHARGE.
250 were printed, but most were used, leaving only a tiny number of unused copies available today. This example is clearly among the very finest.
With 1951 Miro certificate. Scott \$5,000.00. Yvert €6,000 E. 1,500-2,000
- 248 **GABON, 1889, 15c Black on Rose (14; Yvert 14).** Large balanced margins, neat Libreville May 21, 1889 double-circle datestamp, Very Fine and choice, signed A. Brun, Scott \$1,200.00, Yvert €1,300 E. 400-500
- 249 ★ **GABON, 1889, 25c Black on Green (15; Yvert 15).** Original gum, h.r., large to full margins, strong impression, Very Fine, signed A. Brun, Scott \$1,200.00, Yvert €1,400 ...
..... E. 300-400
- 250 ★ **GABON, 1910, 1c-5fr Pictorials with "Congo Français" (33-48; Yvert 33-48).** Mostly lightly hinged, couple minor h.r., well-centered overall, fresh colors, 5fr with couple minor toned perf tips, otherwise Very Fine, scarce to find without the typical tropicalized original gum, 2fr and 5fr each signed A. Brun, Scott \$1,167.00, Yvert €1,150.....
.....(Photo Ex/Website PDF) E. 300-400



251



252



253EX

- 251 ★ **GADELOUPE, 1903, 40c on 1fr Bronze Green on Straw, Black Overprint (Yvert 54e).** Yvert Ty. y, h.r., precise centering, fresh and Very Fine, scarce surcharge in Black, signed A. Brun, Yvert €950 E. 300-400
- 252 ★ **IVORY COAST, 1903, 50c Lilac, Parcel Post (Q3; Yvert CP4A).** Lightly hinged, large to full margins all around, fresh color, Very Fine and choice, an exceptionally scarce Parcel Post stamp with **only 75 printed**, signed A. Brun, Scott \$3,300.00, Yvert €4,000 E. 750-1,000
- 253 ★ **IVORY COAST, 1905, 2fr on 1fr to 8fr on 1fr Parcel Post (Q34-Q36; Yvert CP20-CP22).** 2fr and 4fr lightly hinged, 8fr minor h.r., large balanced margins, 4fr with **plate no. 3** in left sheet margin, fresh and Very Fine, 8fr signed A. Brun, Scott \$1,180.00, Yvert €1,470 (Photo Ex/Website PDF) E. 400-500



254EX



255



256EX

- 254 ★ **MADAGASCAR, 1891, 5c-5fr Typeset Issue (8-13; Yvert 8-13).** 5c-15c original gum, 5c and 15c with sheet margin at top and appear Mint N.H. (hinged in margin only), 10c h.r. with sheet margin at bottom, 25c-5fr without gum as normal, fresh colors, 5fr with minute thin spot in left margin only, Very Fine, a scarce set to find without serious faults due to the fragile paper, original gum examples are particularly scarce, 15c signed Miro, 1fr signed A. Brun, 5fr signed J.F. Brun, Scott \$4,145.00, Yvert €5,000 (Photo Ex/Website PDF) E. 1,000-1,500
- 255 ★ **MARTINIQUE, 1903, 5fr on 60c Brown on Buff, Parcel Post, Inverted Surcharge (Q1a; Yvert 60a).** Minor h.r., large balanced margins, deep rich color, Very Fine and choice, signed Marquet and A. Brun, Scott \$875.00, Yvert €900 E. 200-300

NEW CALEDONIA

- 256 ★ **1881-83, 5c on 40c to 25c on 75c Surcharges (2-5; Yvert 2-5).** Original gum, h.r., large margins all around, No. 5 with bottom right sheet margin, bold colors, No. 3 with slight toned spot on gum (catalogues \$40.00), Very Fine, each signed A. Brun, Scott \$1,165.00, Yvert €1,440 (Photo Ex/Website PDF) E. 400-500



257

- 257 **1892, 10c on 1fr Bronze Green on Straw, Imperforate (34; Yvert 35).** Large balanced margins all around, lovely rich color, neat double-circle datestamp

VERY FINE AND CHOICE. A RARE AND DESIRABLE USED EXAMPLE OF THIS RARITY OF WHICH ONLY 100 WERE SURCHARGED.

This is the first used example we have offered since keeping computerized records. Signed A. Brun and others. Scott \$4,500.00. Yvert €5,800 E. 1,500-2,000



258



259



260EX

- 258 ★ **1903, 75c Violet on Orange, Double Overprint in Black and Red (79a; Yvert 79a).** With selvage at bottom, lightly hinged, wonderfully fresh colors, Very Fine, a scarce error, signed A. Brun, Scott \$500.00, Yvert €780 E. 200-300
- 259 ★ **1903, 1fr Bronze Green on Straw, Double Overprint in Blue and Red (80a; Yvert 80b).** Minor h.r., excellent centering, bold colors, Very Fine and choice, signed A. Brun, Scott \$525.00, Yvert €750 E. 200-300
- 260 ★ **1903, 5c-2fr Postage Due Overprints (J1-J8; Yvert TT8-TT15).** Lightly hinged or h.r., mostly large margins incl. 5c, 60c and 1fr with sheet margin at bottom, bright and fresh, Very Fine, a scarce set in this condition, 10c and 30c signed Pavaille, 60c signed Champion, 2fr signed A. Brun, Scott \$1,724.00, Yvert €2,148 (Photo Ex/Website PDF) E. 400-500



261



262



263



264

- 261 **NOSSI-BE, 1889, 25c on 40c Red on Straw (1; Yvert 1).** Large balanced margins all around, deep color, well-struck blue Nossi-Be Oct. 20, 1889 double-circle datestamp, Very Fine and choice, a handsome example of this scarce stamp, signed A. Brun, Scott \$1,100.00, Yvert €1,500 E. 400-500
- 262 **NOSSI-BE, 1889, 15c on 20c Red on Green (7; Yvert 4).** Bold colors, tied on small piece by well-struck blue Nossi-Be Jul. 28, 1889 double-circle datestamp, Very Fine, a scarce stamp with only 150 printed, signed A. Brun, Scott \$1,100.00, Yvert €1,500. E. 400-500
- 263 **NOSSI-BE, 1889, 25c on 40c Red on Straw (9; Yvert 6).** Precise centering, strong rich colors, neat blue Nossi-Be double-circle datestamp, Very Fine, only 150 printed, signed Thier and A. Brun, Scott \$1,100.00, Yvert €1,000..... E. 300-400
- 264 ★ **NOSSI-BE, 1890, 25c on 1fr Bronze Green on Straw (18; Yvert 18).** Original gum, h.r., uncommonly well-centered, rich color, Very Fine and choice, scarce with only 200 printed, signed A. Diena and Champion, Scott \$1,000.00, Yvert €1,100..... E. 300-400

OBOCK



265EX



266EX

- 265 ★ **1892, 1c-1fr Overprints (1-11; Yvert 1-11).** Original gum, lightly hinged or h.r., except 25c used, wonderfully fresh colors, 1c with toned perfs (catalogues \$45.00), otherwise Very Fine and difficult set to acquire, 1c, 4c, 15c, 40c-1fr each signed A. Brun, 10c signed Champion, 35c signed Roumet, 1fr with 1952 Miro certificate, Scott \$2,613.00, Yvert €2,990(Photo Ex/Website PDF) E. 1,000-1,500
- 266 ★ **1892, 4c-1fr Overprints (12-20; Yvert 12-20).** Original gum, lightly hinged or h.r., far better centering than usual, fresh colors, Very Fine, a choice set, 10c, 20c, 75c and 1fr signed A. Brun, Scott \$665.00, Yvert €781(Photo Ex/Website PDF) E. 200-300



267



269EX



268EX

- 267 ★ **1892, 5fr on 1fr Bronze Green on Straw (31; Yvert 31).** Original gum, lightly hinged, exceptionally well-centered, deep colors, Extremely Fine, a scarce stamp in this choice condition, signed A. Brun and with 1952 Miro certificate, Scott \$775.00, Yvert €900..... E. 200-300
- 268 ★ **1894, 1c-50fr Pictorials (46-64; Yvert 47-64).** Original gum, lightly hinged or minor h.r., each with large margins all around, 4c with sheet margin at top, exceptionally fresh colors, 30c with minor pen number on reverse, Very Fine, a choice set of this attractive Obock series, 2fr signed A. Brun, Scott \$2,389.75, Yvert €2,670..... (Photo Ex/Website PDF) E. 750-1,000
- 269 ★ **1892, 1c-5fr Postage Due (J1 var, J2-J18; Yvert TT1a, TT2-TT18).** Complete set of eighteen, 5c is Reimpression (see footnote, Yvert TT1a) which is Mint N.H., original gum, lightly hinged or h.r., each with large margins incl. 3c with plate no. 2 sheet margin at right and 1fr with sheet margin at left, wonderfully fresh overall, Very Fine, a rare set of this desirable Postage Due series, No. J2 signed Champion, J3-J4 signed A. Brun, 1fr-5fr signed A. Brun, few other values signed A. Brun, 1c Reimpression with 1966 A. Brun certificate, Scott \$2,883.00, Yvert €3,551..... (Photo Ex/Website PDF) E. 1,000-1,500



270



271EX

- 270 ★ **REUNION, 1885, 5c on 40c Orange (3; Yvert 3).** Horizontal pair, original gum, lightly hinged, large margins to clear at bottom, bright color, Very Fine, signed A. Brun, catalogue as singles, Scott \$900.00, Yvert €1,000..... E. 200-300
- 271 ★ **REUNION, 1891, 30c-1fr "Reunion" Overprints (11-16; Yvert 11-12, 13B-16B).** Original gum, lightly hinged or minor h.r., 80c Mint N.H., except 40c unused (no gum), large to full margins incl. 30c with sheet margin at top and 1fr with top left corner sheet margin, fresh colors, Very Fine, 40c, 80c and 75c signed A. Brun, Scott \$1,287.50, Yvert €1,510..... (Photo Ex/Website PDF) E. 300-400

ST. PIERRE & MIQUELON



272

- 272 ★ 1885, 25c on 1fr Bronze Green on Straw (8; Yvert 3). Original gum, h.r., large to full margins all around, bold color

VERY FINE. A REMARKABLE ORIGINAL-GUM EXAMPLE OF THIS RARE ST. PIERRE & MIQUELON STAMP.

Most recorded examples are found without gum and even smaller margins than the example offered here. Signed A. Brun. Due to the disparity in catalogue values between Scott and Yvert, we presume Scott is for no gum. Scott \$2,700.00. Yvert €4,000
..... E. 1,500-2,000



273



274



275EX



276EX

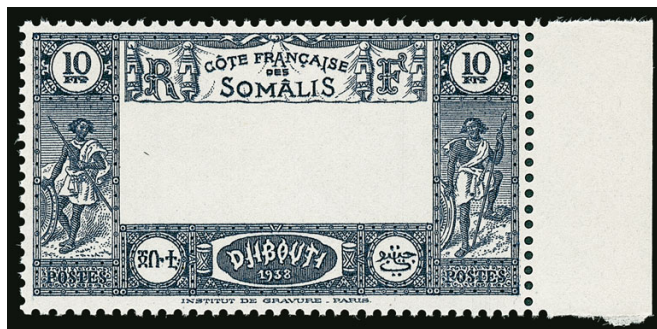
- 273 ★ 1885, 5c on 4c Claret on Lavender (10; Yvert 4). Original gum, lightly hinged, precise centering, fresh and Very Fine, signed A. Brun, Scott \$550.00, Yvert €700 .. E. 200-300
- 274 ★ 1891, 15c on 35c Black on Orange (16; Yvert 13). Original gum, h.r., precise centering with wide margins, bold color, Extremely Fine, a choice example of this scarce stamp, signed Champion and A. Brun, Scott \$725.00, Yvert €800 E. 200-300
- 275 ★ 1891, 1c-1fr "St. Pierre M-on" Overprints (19-35; Yvert 18-34). Complete set of seventeen, original gum, mostly lightly hinged, few h.r. incl. 35c, wonderfully well-centered overall, Fine-Very Fine, 30c-35c and 75c-1fr signed A. Brun, 40c signed Miro, Scott \$1,471.00, Yvert €1,870(Photo Ex/Website PDF) E. 400-500
- 276 ★ 1892, 10c-5fr Postage Due Overprints (52-59; Yvert 51-58). Original gum, lightly hinged or h.r., huge to large margins all around incl. 20c with sheet margin at top, exceptionally fresh overall, Very Fine-Extremely Fine, 40c-5fr signed A. Brun, Scott \$1,325.00, Yvert €1,455.....(Photo Ex/Website PDF) E. 400-500



- 277 ★ **SENEGAL, 1887, 5c on 30c Brown on Bister, Ty. "b" Surcharge (7; Yvert 2b).** Original gum, h.r., wonderfully well-centered, fresh and Very Fine, signed A. Brun, Scott \$1,500.00, Yvert €1,700..... E. 400-500

SOMALI COAST

- 278 ★ **1894, 1fr on 5fr Carmine (4; Yvert 4).** Bottom right corner sheet margins, original gum, barely hinged (if at all) except in sheet margin at top right, wonderfully fresh, Extremely Fine, a choice stamp, signed A. Brun, Scott 625.00, Yvert €840..... E. 200-300
- 279 ★ **1894, 1fr on 5fr Carmine (5; Yvert 5).** Original gum, h.r., large balanced margins, rich color, Very Fine, a rarely offered stamp, signed A. Brun, Scott \$1,900.00, Yvert €2,300 . E. 750-1,000
- 280 ★ **1902, 40c on 2fr Gray Brown & Rose (26; Yvert 25).** Lightly hinged, large margins all around, bold colors, Very Fine, signed A. Brun, Scott \$525.00, Yvert €800... E. 200-300
- 281 ★ **1902, 75c on 5fr Rose & Blue (27; Yvert 26).** H.r., large margins, bright colors on fresh paper, Very Fine, signed Pavoille and Bernichon, Scott \$525.00, Yvert €750 E. 200-300
- 282 ★ **1902, 5c on 75c Gray Lilac & Orange (27B; Yvert 34).** H.r., large balanced margins all around, deep rich colors, Extremely Fine, a choice example of this rare stamp of which only 436 were printed, many of which are used, signed A. Brun and with 1952 Miro certificate, Scott \$1,500.00, Yvert €1,900..... E. 500-750



283



284



285

- 283 ★★ **1938-40, 10fr Pictorial, Center Omitted (177 var; Yvert 168a).** Mint N.H. with selvage at right, well-centered, deep color, Extremely Fine, a very visual error with center omitted, Yvert €650 E. 200-300
- 284 ★ **SYRIA, 1920, 100p on 5fr Dark Blue & Buff, Black Fleuron Overprint (72; Yvert 56).** Barely hinged, uncommonly well-centered with wide margins, bold color, intense impression on bright paper, Very Fine and choice, this is the rarest of the 1920 Fleuron overprints, seldom offered in this choice condition, signed A. Brun, Scott \$2,000.00, Yvert €3,200 E. 750-1,000
- 285 ★ **SYRIA, 1920, 100p on 5fr Dark Blue & Buff, Red Fleuron Overprint (81; Yvert 56B).** Lightly hinged, near perfect centering, bold colors on bright white paper, Extremely Fine, a choice example of this top value with Red Fleuron, signed Miro, Scott \$1,650.00, Yvert €2,800 E. 500-750



286

- 286 ★ **TAHITI, 1882, 25c on 35c Dark Violet on Orange (1; Yvert 1).** Original gum, h.r., large balanced margins, fresh color, Extremely Fine, signed Champion, E. Diena and A. Brun, Scott \$425.00, Yvert €650 E. 200-300

- 287 ★ **TAHITI, 1882, 25c on 40c Vermilion on Straw, Inverted Surcharge (1Be; Yvert 2a).** Large part original gum, h.r., large balanced margins, bright color on fresh paper
VERY FINE AND CHOICE. A RARE EXAMPLE OF THIS 1882 25-CENTIMES WITH INVERTED SURCHARGE.
Only 50 examples of the 40c were surcharged, and that includes both the normal and inverted surcharge positions.
Signed Champion and Miro. Scott \$3,900.00. Yvert €6,800 E. 1,500-2,000



287



288EX

BALANCE OF AN OLD-TIME FRENCH COLONIES COLLECTION

- 288 ★ **French Colonies Remarkable Balance of an Old-Time Collection.** Neatly mounted on homemade pages covering a wide array of areas from Anjouan thru Zanzibar, focused primarily on classic material from 19th century thru around 1915, predominately mint throughout but we do notice the occasional used example as well, what sets this collection apart from most is the overall condition which is far superior to what is normally expected in a balance lot, most stamps were carefully selected for their margins, centering and overall freshness, we notice numerous sets and singles which catalogue between \$100.00-\$800.00, some more, nearly all better material and high values signed A. Brun or others, as to be expected with any collection balance, we do notice the occasional toned spot here and there

VERY FINE. A REMARKABLE FRENCH COLONIES BALANCE COLLECTION — A PERFECT SUPPLEMENT FOR ANY COLLECTION OR A GREAT FOUNDATION FROM WHICH TO BUILD UPON.

Our rough catalogue value of the collection easily exceeds \$85,000.00.....
(Photo Ex/Website PDF) E. 15,000-20,000



288EX



289EX

- 289 ★ **GERMAN EAST AFRICA, 1893, 2pes-25pes Overprints, with Additional “Worthlos” handstamp (1 var-5 var; Michel 1-5 footnote).** Without gum as issued, fresh colors, Very Fine set, only one sheet was found in the archive of the Printing House in Berlin, with 1998 Steuer certificate, Michel €3,500.....
.....(Photo Ex/Website PDF) E. 500-750

- 290 S **GERMAN SOUTH-WEST AFRICA, 1901 3pf-5m Kaiser Yachts, with “Ultramar” Overprint (13 var-25 var; Michel 11 var-23 var).** Most with no gum, a few with small part original gum (typical, as most of these were removed from post office books), Fine-Very Fine, scarce specimen overprints from the Portuguese Colonies archives
.....(Photo Ex/Website PDF) E. 400-500



290EX

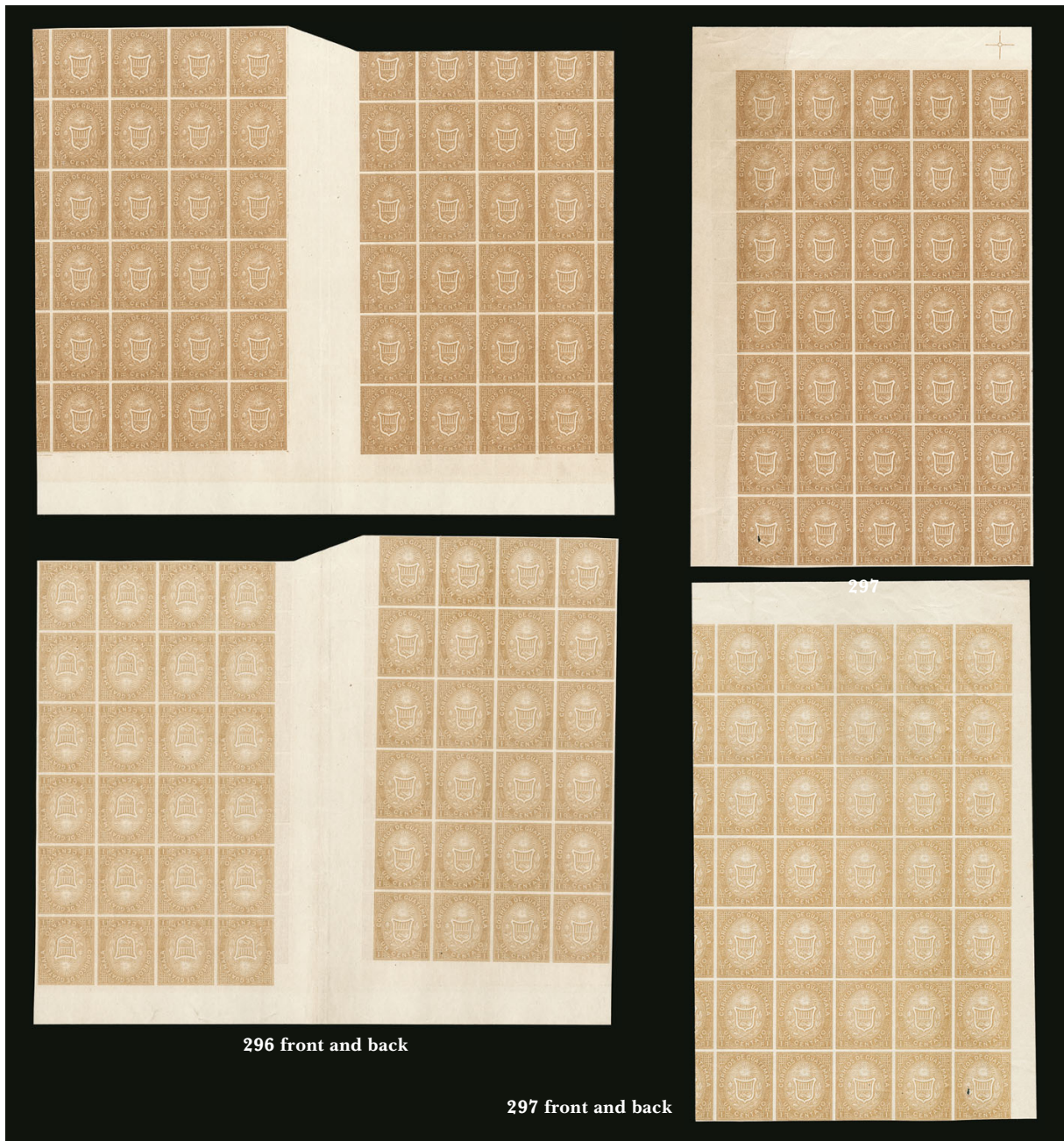
- 291 **Germany Collection.** On album pages, some German States that are mostly used and 19th Century German proper including unused, but the real value of the collection is in the 20th Century unused, many complete sets, with Republic, Third Reich, early post-war including Berlin and DDR, occupation issues, plebiscites, colonies and more, mixed condition on the early issue in mixed quality, 20th Century largely Fine-Very Fine
.....(Website Video) E. 1,000-1,500
- 292 ☒ **Germany Covers.** Over 80 mostly 20th Century commercial, pair 60pf Miners with Network watermark (Scott 137) on postcard, airmail covers, better early post-war uses, and more, Fine-Very Fine(Website Highlights PDF) E. 200-300
- 293 ☒ **GERMANY, World War II Occupation of Alsace & Lorraine Postal History Collection.** Over 50 covers or cards, mostly from 1941, with various Occupation stamps tied by boxed emergency cancels from a wide variety of towns, Fine-Very Fine
.....(Website PDF) E. 200-300
- 294 ☒ **GERMANY, Alsace & Lorraine World War II Feldpost Correspondence.** About 130 covers with letters from an Alsatian soldier in the German army from 1942-45, who was sentenced to death and shot in Slovakia in 1945 (last letter dated 1-30-45), in a letter from 8-40-44 he hopes for the liberation of Alsace, covers with various Feldpost and censor markings, also a 1955 obituary notice from the family who exhumed the deceased soldier in Czechoslovakia and buried him in Alsace, an interesting lot from both a philatelic and historical perspective(Website Highlights PDF) E. 200-300



295

- 295 ☒ **GERMANY, Offices in Turkey, 1884 1pi on 20pf Ultramarine, Black Surcharge (3; Michel 3d).** Tied by “Kaiserl. Deutsch. P.A. Constantinopel 10 8 88” circular date-stamp on cover to New York (receiving backstamp), cover slightly reduced at bottom, fresh and Very Fine, this cancel was temporarily used at the summer residence of the German Embassy in Therapia, only one other cover and a few pieces of postal stationery are recorded with this cancel E. 200-300

GUATEMALA



296 front and back

297 front and back

- 296 (★) 田 1871, 1c Ocher, Imperforate, Printed on Both Sides (1b). Interpanneau gutter block of 44 with sheet margin at bottom comprising a block of 24 from the left pane and block of 20 from the right pane, with large portions of adjoining stamps at left, top of right pane and at right, without gum, reverse orientation printed **as interpanneau gutter tête-bêche blocks of 24**, previously folded thru gutter

VERY FINE INTERPANNEAU GUTTER BLOCK OF THE IMPERFORATE 1871 ONE-CENT PRINTED ON BOTH SIDES WITH TÊTE-BÊCHE ORIENTATION. A RECENTLY DISCOVERED MULTIPLE.

Scott value \$5,940.00 as singles with no premium for block or printing orientation..... E. 1,500-2,000

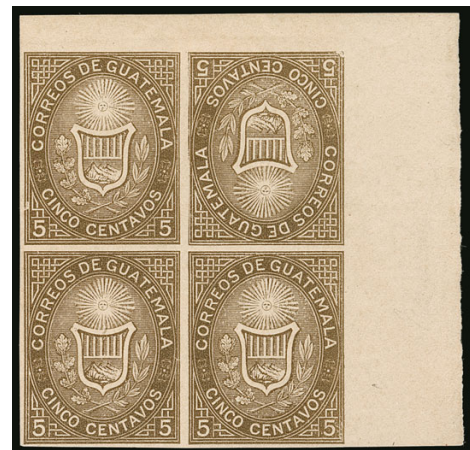
- 297 (★) 田 1871, 1c Ocher, Imperforate, Printed on Both Sides (1b). Top left corner margin block of 35 with guide mark in top margin, without gum, reverse printing in same orientation, rich color, some slight creasing affecting left vertical row and Pos. 2 and 7, bottom left stamp with small hole, otherwise Very Fine and impressive multiple, Scott value \$4,725.00 as singles E. 1,000-1,500



298 front and back

- 298 (★) 1871, 1c Ocher, Imperforate, Printed on Both Sides (1b). Bottom right corner margin block of 35, without gum, reverse printing with inverted orientation to front, bold color, few minor bends affecting first and fourth vertical rows, otherwise Very Fine and handsome multiple of this variety, Scott value \$4,725.00 as singles..... E. 1,000-1,500

- 299 ★ 1871, 5c Light Bister Brown, Imperforate, Tête-Bêche (2c). Top right corner margin block of four, Pos. 9-10/19-20, original gum, top pair paper h.r., bottom pair Mint N.H., top right stamp inverted and showing the distinctive dot in second "R" of "Correos", strong color, Very Fine, a choice example of this rarely encountered tête-bêche error, Scott value \$3,550.00 as tête-bêche pair and pair E. 1,000-1,500



299



300

- 300 ★ 1871, 5c Light Bister Brown, Imperforate, Tête-Bêche (2c). Top right corner margin block of four, Pos. 9-10/19-20, original gum, h.r., top right stamp inverted and showing the distinctive dot in second "R" of "Correos", insignificant corner crease in right margin only, Very Fine, a rare tête-bêche error block, ex "Santa Fe", signed E. Diena, Scott value \$3,550.00 as tête-bêche pair and pair E. 1,000-1,500



301



302

- 301 ★ 1871, 10c Blue, Types I-II (3a, 3c). Block of six, Pos. 83-85/93-95, original gum, Pos. 83-84 and 94 h.r., other three **Mint N.H.**, Pos. 95 Ty. II showing the distinctive narrow "0" at bottom left, others Ty. I, bold color, Pos. 94 with minor thin, otherwise Very Fine and scarce se-tenant block, in the sheet of 150, Ty. I stamps are found on the first 94 stamps, Ty. II on the remaining 55 with the exception of Pos. 149 which is also Ty. I..... E. 400-500
- 302 ★ 1871, 10c Blue, Types I-II (3a, 3c). Two blocks of four, original gum, h.r., first block top pair Ty. I (horizontal crease) and bottom pair Ty. II emanating from ninth row, second block Pos. 84-85/94-95 showing Ty. II in Pos. 95, others Ty. I, Very Fine and scarce pair of se-tenant blocks, in the sheet of 150, Ty. I stamps are found on the first 94 stamps, Ty. II on the remaining 55 with the exception of Pos. 149 which is also Ty. I..... E. 500-750



303

- 303 (★) 1871, 20c Blue, Error of Color (4c). With sheet margin at left, other sides ample to clear, unused (without gum), fresh color, Very Fine, an elusive and rare imperforate color error, ex "Santa Fe", Scott \$1,750.00 E. 500-750

- 304 (★) 1871, 20c Blue, Error of Color (4c). Unused (without gum), full to ample margins all around, rich shade, Very Fine example of this rarely encountered imperforate error of color, Scott \$1,750.00 E. 500-750



304



305

- 305 ★★田 1871, 20c Blue, Error of Color (4c). Mint N.H. top right corner sheet-margin block of four with traces of adjoining stamps at left and bottom, Pos. 9-10/19-20, bold shade on bright paper

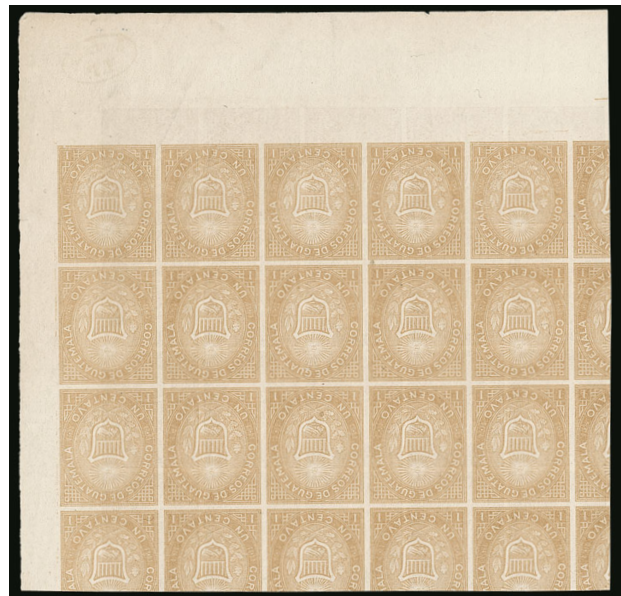
EXTREMELY FINE. A REMARKABLE MINT NEVER-HINGED CORNER SHEET-MARGIN BLOCK OF THE 20-CENTAVOS COLOR ERROR. MULTIPLES OF ANY SIZE ARE RARELY ENCOUNTERED. A SHOWPIECE OF GUATEMALAN PHILATELY.

The 20c Error of Color was originally considered color trials or proofs when they were first reported back in the late 19th century. Although, they are now considered with certainty to have been printed at the same time as the other values of this issue, invalidating that theory of these errors as proofs. Goodman states "*rare in pairs or blocks*".

Each stamp with expert's handstamp. Scott value \$7,000.00 as singles with no premium for positional block..... E. 3,000-4,000



306EX



- 306 ★田 1871, 1c-20c Imperforate Balance Group (1a, 1b, 2a-4a). 8 multiples, three No. 1a incl. original gum bottom right corner margin block of fifteen, unused (no gum) interpanneau block of sixteen and unused (no gum) top right corner margin block of 30 with "Controle T.P." handstamp, two No. 1b with top right and bottom right corner margin blocks of 20, the former with inverted orientation on reverse and the latter with normal, both with "Control T.P." handstamps, 5c-20c as original gum blocks of fifteen, **10c se-tenant Ty. I and II block** from Pos. 84-88/94-98/104-108, 20c with sheet margin at left, couple with minor flaws, Very Fine imperforate group of the 1871 Issue, Scott value \$7,240.00 as singles and pairs.....(Photo Ex/Website PDF) E. 2,000-3,000

- 307 ★ **1881, 2c Brown & Green, Center Inverted (22a).**
Original gum, minor h.r., wonderfully rich colors,
fresh and Very Fine, ex Col. Green, Scott \$725.00
..... E. 300-400



307



308

- 308 ★ **1881, 2c Brown & Green, Center Inverted (22a).**
Original gum, h.r., bold colors, Very Fine, a scarce
and collectible invert, Scott \$725.00 E. 300-400

- 309 ★ **1881, 20c Yellow & Green, Center Inverted (25a).**
Original gum, uncharacteristically well-centered,
wide margins, fresh color, Very Fine and choice
example of this scarce inverted center, Scott
\$825.00..... E. 400-500



309

- 310 **Guatemala 19th Century Accumulation.** On old lot cards, stockcards, album pages, and a stockcard, with representation from just about all 19th Century issues, unused and used, a few proofs, and one cover (a scarce use of the 1886 25c on registered cover to the U.S.), First Issue includes some imperforate pairs and blocks, mixed condition, useful specialist's material.....(Website PDF) E. 500-750
- 311 ☒ **HUNGARY - Austria Used in Hungary Collection.** 37 covers or cards and 60 off-cover stamps. 1850s-1870s, excellent diverse range, covers include 1858 15kr tied by Dubicza circular datestamp to Budapest, 1863 10kr tied by "Pest/Recommandirt" on registered cover, better off-cover cancels such as Dolni Miholjac, Margita, Verebely, Fegyvernek, Nyir Bathor, Szine, Teth, Tovarnik, and more, both on and off cover item chosen for their clear and complete (or nearly so) cancels, stamps themselves in usual mixed condition(Website PDF) E. 400-500

- 312 ☒ **HUNGARY, WWI Military Postal History Collection.** 24 mostly unfranked cards, most with “Tabori Postai Levelezolap” (Camp Postal Postcard) inscription, includes a few Red Cross and Feldpost, range of cancels including KUK Feldpost, variety of censor and auxiliary markings, including handstamps of military units, plus another seven postcards from WWII, Fine-Very Fine, usages from Hungary are not common.....(Website PDF) E. 300-400
- 313 ☒ **HUNGARY, Postal History Small Group.** Eleven covers from 1903-1970s, five are first day covers with **imperforate** stamps, incl. Nos. 1158 (tete-beche pair, imperforate between), 1189, 2514, B310a and B311 (total catalogue \$660.00 as used 1158 and others unused), few interesting uses which incl. original auction descriptions, Fine-Very Fine....(Website PDF) E. 200-300

- 314 ★★ **IRAN, 1956-57, 50d Brown & Olive Brown, Inverted Center (1059Ab).** Mint N.H., fresh colors, pencil pos. 45 on reverse, Very Fine and scarce, only 100 examples were printed, with 2002 A.P.S. certificate, Scott \$3,750.00.... E. 1,000-1,500



314



315EX

- 315 ★★ **ITALIAN EAST AFRICA, 1941 10c on 5c - 101 on 51 “British Occupation” Unissued Set (Sassone 1-9).** Mint N.H., bright colors, Very Fine, these were printed in Mogadishu but never issued by the British authorities, most were destroyed, with 1953 A. Diena certificate for the set and 1953 Bolaffi certificate for the top value, Sassone €5,000(Photo Ex/Website PDF) E. 750-1,000

- 316 **ITALY, Collection.** On album pages, includes States, with some high cataloguing stamps, though condition is mixed as usual, Italy proper contains a few better unused early stamps and later complete sets, with a nice run of Air Post issues, other Back-of-Book, a little San Marino and even a bit of Liechtenstein (with both Zeppelin sets), much of the 20th Century is Fine-Very Fine(Website PDF) E. 500-750



- 317 ★★田 **JAPAN, 1935, 1½ Rose Carmine, Miniature Sheet of Twenty (222a).** Mint N.H., well-centered and fresh, just the tiniest hint of a corner bend at top left, Very Fine, Scott as hinged \$700.00 E. 300-400
- 318 ★ **JAPAN, Mostly Unused Lot.** Many dozens of singles and sets, includes Nos. 145a, 201 (two), 229, 492 corner block of four, C9-C13, etc., some Mint N.H., Fine-Very Fine (Website Highlights PDF) E. 300-400
- 319 S **KIAUCHAU, 1901, 3pf-5m Kaiser Yachts, with “Specimen” Overprint (10S-22S; Michel 5SP-17SP).** Mint N.H., uncommonly fresh, with strong colors throughout, Very Fine, each signed Bothe BPP, Scott \$2,100.00, Michel €2,600..... (Photo Ex/Website PDF) E. 500-750
- 320 S **KIAUCHAU, 1901, 3pf-5m Kaiser Yachts, with “Specimen” Overprint (10S-22S; Michel 5SP-17SP).** Original gum, each with minor h.r., well-centered and fresh throughout, 25pf with light crease, otherwise a Very Fine set, each signed Bothe BPP and with his 1983 certificate, Scott \$1,100.00, Michel €1,300 (Photo Ex/Website PDF) E. 300-400
- 321 ★ **KOREA, Lot.** 1946-1970s, mostly unused, better items include three 1951 300wn on 50wn with “closed 3” surcharge, Nos. 187C, 262, and more, many Mint N.H., Fine-Very Fine (Website Highlights PDF) E. 200-300
- 322 ★★ **MANCHUKUO, 1937, Complete Booklet of Ten Panes of 2f Light Green (86a).** Unexploded booklet with original bend, fresh and Very Fine, Scott as ten panes \$600.00 E. 300-400



323EX

- 323 ★ **MARIANA ISLANDS, 1899-1900, 3pf-50pf 48 Degree and 56 Degree Overprints (11-16; 11a-16a).** Original gum, first printing with some h.r., 50pf with slightly toned gum, also includes a Mint N.H. corner block of 25pf Second printing, 50pf of second printing with small thin (cat. \$65.00), Fine-Very Fine, most of the First Issue signed, 5pf with R.P.S. certificate, Scott \$11,220.00, Michel €13,110
(Photo Ex/Website PDF) E. 1,500-2,000

- 324 **MEXICO, Classic Group.** Ten items, nine of which are **on the original Caspary lot cards from 1958**, mostly used from the 1856-61 Issues, including a bisect cover, range of district overprints and cancels, most with large to huge margins, Very Fine-Extremely Fine group.....(Website PDF) E. 500-750

- 325 **MONGOLIA, 1943, 60m Green (82).** Light purple cancel, strong color, Very Fine, the key rarity of Mongolia, Scott \$3,000.00..... E. 750-1,000



325

- 326 **PORTUGAL AND COLONIES, Collection.** To 1930s on album pages, early used stamps in mixed quality, but does contain some Very Fine examples, later medium-priced stamps including unused complete sets.....(Website PDF) E. 750-1,000



327

- 327 ★ **SAAR, 1920, 2pf Gray (19; Michel A31).** Small h.r., exceptional centering, bold color, Very Fine and choice, signed A. Brun, Scott \$900.00, Michel €1,100..... E. 300-400

- 328 **EL SALVADOR, 1879 Issue Specialized Collection.** About 350 stamps, all five denominations with duplication, mostly unused or used singles, a few multiples, including unused and cancelled panes of 25 of the 1c, range of shades and cancels, majority Fine-Very Fine.....(Website PDF) E. 500-750



329EX

- 329 ★★ **SOMALIA, 1921, 1b-10a Elephant and Lion, with “Somalia Italiana” Overprint** (Sassone 23A-23G). Mint N.H. with selvage at right or left, wonderfully bright colors

FINE-VERY FINE. A FRESH AND HANDSOME SET OF THE 1921 OVERPRINTS. ONLY 50 SETS ARE KNOWN TO HAVE SURVIVED.

This series was produced at the order of the Minister of the Colonies in January 1921. Two months later it was determined the wrong monetary unit (“Anna”) was included on the top five values and so the issue was ordered to be destroyed. 50 of each value survived destruction. Sassone notes “50 sets are known, some of which are defective.”

With 1987 E. Diena certificate. Sassone €57,000 (Photo Ex/Website PDF) E. 5,000-7,500



330

- 330 田 **SPAIN, 1850, 5r Red (3; Edifil 3).** Block of four with portions of spider cancels, large to full margins including **sheet margin** at top, slight nick at the bottom of the left margin, beautiful rich color and deeply etched impression, slight paper wrinkle in left margin, top left stamp with faint bend, Very Fine appearance, ex Caspary (original 1958 Caspary lot card accompanies), Scott \$3,750.00 E. 500-750

- 331 **SPAIN AND COLONIES, Collection.** On album pages, 19th Century mostly used, with some better stamps, condition is slightly mixed on these, various 20th Century including unused sets, and some Cuba, Philippines, and Puerto Rico (Website PDF) E. 400-500

- 332 **THAILAND, 1899, 4a Black & Green, 10a Carmine & Green (73-74).** Neat Korat 1899 circular datestamps, fresh colors, Very Fine and scarce pair of these high values, Scott \$1,200.00 E. 400-500



332

WORLDWIDE BALANCES AND ACCUMULATIONS

- 333 **British Commonwealth Desirable Holding.** Dozens of better items on auction lot cards, stockpages, or stockcards, mostly unused, with singles, sets and small groups, including some specialized material, many popular 20th Century high values and sets, a few high cataloguing classic used stamps, a few with small faults, but most Fine-Very Fine, the scan on our website will show just how impressive and saleable it is(Website PDF) E. 3,000-4,000
- 334 **British Commonwealth Collection.** On a couple hundred album pages, mostly unused, loaded with medium-priced singles and sets, includes Malaya, Middle East, America, Pacific Islands, Ireland, British Offices Abroad, and others, vast majority Fine-Very Fine, a highly saleable lot(Website Video) E. 3,000-4,000
- 335 **Worldwide Eclectic Holding.** Many dozens of stamps and covers on stockcards, very diverse, with pre-stamp, classic stamps, early 20th Century unused sets, better post-war Germany (though some are stuck down as noted below), Canada revenues, a few China, and more, includes some reprints and a few questionable items, mixed condition including some of the mint stamps partially stuck to the stockcards, but an interesting and varied group(Website PDF) E. 1,000-1,500
- 336 **Worldwide Classic Stamps.** From an old-time collection formed in the 1940s and 1950s, over 60 including three on cover, selected for superior quality, includes Cape of Good Hope triangles, Spain and Colonies, various Europe, a few South America, and more, there are probably a few small faults, imperforate stamps usually with full to large margins around, majority with Very Fine appearance, invites careful scrutiny(Website PDF) E. 750-1,000
- 337 **Worldwide Balance.** On album pages, mostly independent Asia and Middle East, with Egypt, Thailand, Iran, Korea, Liberia, and a few others including a useful selection of Greece, somewhat mixed quality, much Fine-Very Fine(Website PDF) E. 500-750
- 338 **Worldwide Balance of Estate.** Much is centered around Airmails, with unused stamps and flown covers, miscellaneous other covers including United States, Brazil used collection of 1866-78 issues, and more, mixed condition(Website Video) E. 500-750
- 339 **Worldwide Small Balance of Better Items.** Few still on auction lot cards, incl. better singles such as Great Britain Penny Black (2), Australia No. 57, France No. 1 (2), Canada No. 47 and 50c Bluenose, Faroe Islands No. 1 on cover (with Nielsen certificate), plus a couple others, mostly Fine-Very Fine(Website Video) E. 500-750
- 340 **Worldwide Balance.** DDR collection, Germany and other covers, various other stamps including United States, mixed condition(Website Video) E. 200-300

WORLDWIDE COVER BALANCES

- 341 ☒ **British Commonwealth Covers.** Over 150 mostly 20th Century commercial, better include Queensland to U.S. with Consular corner card, 1929 Bahrain airmail/surface cover, few better India, Aden, Bermuda Zeppelin, and more, most Fine-Very Fine(Website Highlights PDF) E. 300-400
- 342 ☒ **Europe Covers.** Over 150 mostly 20th Century commercial uses, five late 1930s addressed to the President of the United States, Turkey 1932 100k Maroon on airmail cover to the U.S., other airmail uses from the 1930s, and more, largely Fine-Very Fine ..(Website Highlights PDF) E. 400-500
- 343 ☒ **Latin America Covers.** Over 90 mostly 20th Century, several airmail including Brazil Varig, Mexico, and Uruguay Zeppelin postcard, mainly Fine-Very Fine(Website Highlights PDF) E. 200-300
- 344 ☒ **Worldwide Cover Assortment.** Over 125 mostly 20th Century commercial uses, mostly Asia (including China) and Middle East (with several Egypt), better include Saudi Arabia with scarce 5g Pin-Perf 6½ and Iran 1949 registered cover to U.S. correctly paying the 6r rate, mainly Fine-Very Fine(Website Highlights PDF) E. 300-400
- 345 ☒ **Worldwide Flight Cover Assortment.** Over 40 covers, mixture of United States, Newfoundland (with 1931 \$1.00 cover) and worldwide covers, incl. first flights, rocket mail, commemorative flights, and more, Fine-Very Fine(Website PDF) E. 300-400

END OF SALE — THANK YOU

NEVER MISS OUT AGAIN

REGISTER WITH THE MOST DETAILED WANT LIST IN PHILATELY

Whether you collect Caroline Island covers, used Great Britain or British Africa, you never have to miss out again. Register at our website, and receive email notifications when something matching your interests is part of an upcoming auction. You can also see what we have sold in the past in your area of interest. Just follow the steps below.

Step 1. Register for an account at our website.

You will be sent an email with a link to activate the account. This ensures notifications are received.

Note: You will also log in here once you've created your account.

Step 2. Go to the My Searches tab and select New Search

This will take you to the Power Search page, where you can create your searches.

Note: Once you've created some searches, you can review them and run them from this page.

There is also a short video tutorial at the bottom of this page showing how to create your want list.

Step 3. Create your search

Select your search criteria on this page, following the steps below.

Note: you can skip steps if you want to create a broader list

4. If you want a specific country then select it under the Issue/Country field.

Note: you can go right to this step after selecting Area if you are looking for a specific country.

5. Looking for just Penny Blacks? Use the Catalogue # field to restrict your search to a specific stamp (by Scott no.)

6. Use the symbol field to narrow your list to used only, covers only, etc.

8. Name and save your search. It will then appear on your My Searches page.

1. Select the general Area. There are five to choose from.

2. If you want a broad criteria such as all British Commonwealth then use the Sub Area field.

3. If you want a slightly more specific area such as British Africa, then use the General field.

7. Use the Key Word to pick up on any word in descriptions

Use the Help button for ideas about creating lists and for a video tutorial.

Live and Absentee Internet Bidding at Siegel

**ALL INTERNET BIDDING IS NOW HANDLED DIRECTLY FROM THE SIEGEL WEBSITE
SALES ARE NO LONGER LISTED ON STAMP AUCTION NETWORK**

REGISTERED BIDDERS MAY LEAVE BIDS IN ADVANCE OF THE SALE
AND BID LIVE DURING THE AUCTION

DOWNLOAD THE SIEGEL APP FROM THE APPLE OR GOOGLE PLAY STORES

This step-by-step guide will instruct you how to register and use the bidding interface.

Start by following the simple steps to become a registered internet bidder.

Once you have been approved for bidding, you can leave bids in advance of the sale,
listen to the auction and place bids live with the click of a mouse.

Registering with Siegel Auction Galleries

To bid, you must be registered and approved by Siegel.

To decide what you need to do, choose the description below that best fits you.



**I've already registered with Siegel and
have been approved by Siegel for internet bidding**

Internet bidding works by allowing registered bidders to observe and place bids, either before the sale or in real-time during the auction.

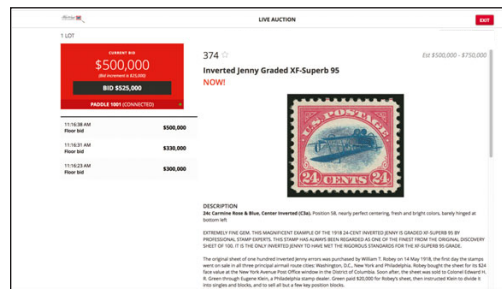
Live Internet Bidding will work with any browser on both PC and Mac operating systems, or with our app..

Before bidding by internet for the first time, we recommend observing an auction in progress. This will help you develop a feel for the sale tempo and bidding interface.

Log in and participate in the auction at bid.siegelauctions.com

When you're logged on as an internet bidder, the bidding interface shows a photo and description of the lot, the current bid (and your bidding status), options for placing competitive bids and buttons with bid increments.

- After you click on a bid amount, the auctioneer is immediately notified of your bid.
- Retracting a bid is not acceptable, so please bid carefully.
- You can track prior realizations from the bidding screen.



I'm a Siegel client, but I'm not registered to bid live
Go to bid.siegelauctions.com and click on **Login** at the top. Then click on the link for **Sign Up Now**. We will match your new signup to your existing account.

I want to become a Siegel client and bid in auctions
Go to bid.siegelauctions.com and click on **Login** at the top. Then click on the link for **Sign Up Now**. You will need to register and provide trade and banking references.

"System Down" or "Lost Connection" events do occasionally happen.

If you have any problems with Live Internet Bidding please call 212-753-6421 for immediate assistance.

BIDS

Use this form to submit absentee bids
or to confirm telephone bids

Sale 1229

DECEMBER 14, 2020

PADDLE #

1

Please provide the following information:

NAME

ADDRESS

CITY/STATE/ZIP

PHONE MOBILE

EMAIL

2

Have you purchased from us in the past 5 years? ☐ Yes (please go to Section 3)
☐ No (references required below)

STAMP FIRM PHONE

STAMP FIRM PHONE

Please submit references at least **2 business days** before the sale. Bids from new clients will not be executed if satisfactory references are not received in time to be contacted.

3

- Enter the lot number and your corresponding maximum bid in the space below
- Use whole dollar amounts and bid according to the increments (see back of form)
- Bids do not include the **18% Buyer's Premium**, taxes, duty or shipping charges
- Absentee bids will advance at one increment over the next highest competing bid
- "Plus", "Break Tie" or "Buy" bids will not be executed
- Indicate any "Or" bids between lot number/bid entries and bracket your choices
- If you wish to limit the total amount of your bids, follow the instructions below

Lot #	Bid \$	Lot #	Bid \$	Lot #	Bid \$

☐ **Limit Bids:** Check this box if you wish to limit the total hammer price of your bids (excluding 18% Buyer's Premium, taxes, duty and shipping costs). Your bids will be executed until your bidding limit has been reached. The total amount you wish to bid is \$

4

By signing this form, you agree to all of the Conditions of Sale printed in the sale catalogue (printed and digital), including but not limited to a) payment in the manner demanded by the Siegel firm, and b) payment of the 18% Buyer's Premium, any sales tax or customs duty, shipping costs, late charges and

other prescribed charges. You agree that your bids will be executed as a courtesy by Siegel, but you waive the right to make any claim against Siegel or its employees arising from these bids or your participation in the sale. You agree to honor all bids as submitted, regardless of any errors or omissions.

SIGNED DATE

Mail the signed form to Siegel Bid Department, 6 West 48th Street, 9th Floor, New York, NY 10036
or email to stamps@siegelauctions.com
or fax to 212-753-6429

Additional Bids

Sale 1229

DECEMBER 14, 2020

PADDLE #

Lot #	Bid \$	Lot #	Bid \$	Lot #	Bid \$

Shipping & Insurance

We will be pleased to arrange for shipping and transit insurance for purchases in this sale, except for lots marked or announced as "floor sale only." To expedite billing and delivery to hundreds of buyers in each sale, we use standard charges for postage and insurance under our policy. These charges are based on the package weight and mailing requirements, according to the schedule shown here. Our standard charges do not include a fee for our services, and they may be slightly more or less than the actual postage or Fedex fee. We ask all buyers to remit the invoiced amount for shipping and insurance.

Transit insurance is provided in all cases, except when the buyer has furnished us with documentation that insurance is effective under the buyer's own policy.

There will be no added insurance charge for shipments of less than \$75,000 value. Shipments valued in excess of \$75,000 may require supplemental insurance and/or special courier service, the estimated cost of which will be furnished to the buyer prior to shipment. If the buyer refuses to pay the estimated charges or furnish proof of self-insured coverage, the buyer will be responsible for picking up the lots at our office and any resulting sales tax.

Standard Shipping Charges

Weight Class	Shipping Method	Charge
Up to 2 lbs.	Fedex Envelope	\$20
Over 2 lbs.	Fedex Box	\$35 - \$50*
Outside US	Fedex	\$50 - \$100**
Bulky Lots	Fedex Ground or Express	By weight

* Up to \$75,000 value and up to 5 lbs; additional charge may apply to packages exceeding limits

** Buyers outside United States are liable for any applicable customs duty and clearance charges. An accurate declaration of contents and value will be made on all packages and import/export documents. **Siegel may refuse to ship lots to certain countries with a high risk factor.**

2/2015

Bidding Increments

The auctioneer may regulate the bidding at his discretion. However, to assist absentee bidders in establishing their maximum bids, the increments shown here will be used in most cases. We recommend that written bids conform to these increments—bids that do not will be reduced accordingly.

Bid	Increment	Bid	Increment
Up to \$200	\$10	\$7,000-20,000	\$500
\$200-500	\$25	\$20,000-30,000	\$1,000
\$500-1,000	\$50	\$30,000-70,000	\$2,500
\$1,000-3,000	\$100	\$70,000-140,000	\$5,000
\$3,000-7,000	\$250	\$140,000-300,000	\$10,000