

THE SCARSDALE COLLECTION



PART ELEVEN—SALE 1243
WEDNESDAY, OCTOBER 20, 2021

I N T E R N A T I O N A L

Robert A. Siegel

IN ASSOCIATION WITH CHARLES F. SHREVE

THE SCARSDALE COLLECTION

PART ELEVEN—SALE 1243
WEDNESDAY, OCTOBER 20, 2021
AT 10:30 A.M. (LOTS 501-643)
AND 1:30 P.M. (LOTS 644-781)

British North America

Offered at unreserved public auction by

I N T E R N A T I O N A L

IN ASSOCIATION WITH CHARLES F. SHREVE

6 WEST 48TH STREET, 9TH FLOOR
NEW YORK, NEW YORK 10036

Phone (212) 753-6421

Email: stamps@siegelauctions.com
siegelauctions.com

PRE-SALE EXHIBITION

Monday and Tuesday, October 18-19 — 10:00 a.m. to 4:00 p.m.
or by appointment (please call 212-753-6421)

Lots in this sale will be sold subject to an 18% buyer's premium



INTERNATIONAL
Robert A. Siegel
 IN ASSOCIATION WITH CHARLES F. SHREVE

6 WEST 48TH STREET, 9TH FLOOR, NEW YORK, N.Y. 10036
 Phone (212) 753-6421 • Fax (212) 753-6429 • Email: stamps@siegelauctions.com
siegelauctions.com



Scott R. Trepel
 President
 strepel
 @siegelauctions.com



John P. Zuckerman
 Senior Vice President
 jzuckerman
 @siegelauctions.com



Corey Long
 Senior Vice President
 clong
 @siegelauctions.com

Siegel International
 Dallas (214) 754-5991



Charles F. Shreve
 Director, Siegel International
 charles
 @siegelauctions.com



Samantha Aragon
 VP, Financial
 samantha
 @siegelauctions.com



Gina Cashia
 VP, Operations
 gina
 @siegelauctions.com



Andrea Moreno
 Operations
 andrea
 @siegelauctions.com



Andrew Titley
 VP, Siegel International
 andrew
 @siegelauctions.com



Chris Anderson
 International Specialist
 chris
 @siegelauctions.com

Scott R. Trepel Principal Auctioneer (licensed by NYC Dept. of Consumer Affairs, #795952)

Information for Bidders

Bidding

The following means are available for placing bids:

- 1) **PUBLIC ATTENDANCE AT AUCTION:** This auction will be open for in-person bidding, subject to certain conditions and measures for the health of clients and staff. Please call for instructions.
- 2) **Live Internet Bidding:** Instructions for participating as a Live Internet Bidder are provided on the page opposite.
- 3) **Phone Bidding:** Bidders can be connected to the sale by phone and bid through a member of staff. Requests for phone bidding are subject to approval (please contact our office at least 24 hours before the sale). A signed Bid Form is required.
- 4) **Absentee Bids.** All bids received in advance of the sale, either by mail, fax, phone, e-mail or internet, are Absentee Bids, which instruct the auctioneer to bid up to a specific amount on one or more lots in the sale. Absentee Bids sent by phone, fax or email should arrive at least one hour prior to the start of the sale session. Bids entered through Live Internet Bidding will be visible to the auctioneer during the sale. Written bids should be entered legibly on the Bid Form in the sale catalogue. Email and internet bids should be carefully typed and double-checked. All new bidders must provide references. We recommend calling or e-mailing to confirm that Absentee Bids sent by mail, fax or email have been received and entered.

Presale Viewing by Appointment

To protect the health of our clients and staff, presale viewing will be arranged by appointment only and with mandatory protective measures. To make an appointment and receive instructions for pre-sale viewing, please contact us at (212) 753-6421 or by email. We reserve the right to refuse, cancel or postpone a request or appointment for medical reasons.

Expert Certification

Individual items offered without a certificate dated within the past five years may be purchased subject to independent certification of genuineness and our description. **Please refer to the Conditions of Sale and Grading Terms for policies governing certification.**

Shipping and Delivery

Procedures and charges for shipping lots are printed on the back of the Bid Form. **Bidders are responsible for all prescribed shipping charges and any applicable sales tax or customs duties.**

Price Realized

Prices realized are sent with each invoice. Bidders with email will receive a Bid Results report after the sale. Session results are posted immediately to **siegelauctions.com**

Live and Absentee Internet Bidding at Siegel

**ALL INTERNET BIDDING IS NOW HANDLED DIRECTLY FROM THE SIEGEL WEBSITE
SALES ARE NO LONGER LISTED ON STAMP AUCTION NETWORK**

**REGISTERED BIDDERS MAY LEAVE BIDS IN ADVANCE OF THE SALE
AND BID LIVE DURING THE AUCTION**

DOWNLOAD THE SIEGEL APP FROM THE APPLE OR GOOGLE PLAY STORES

This step-by-step guide will instruct you how to register and use the bidding interface.

Start by following the simple steps to become a registered internet bidder.

Once you have been approved for bidding, you can leave bids in advance of the sale, listen to the auction and place bids live with the click of a mouse.

Registering with Siegel Auction Galleries

To bid, you must be registered and approved by Siegel.

To decide what you need to do, choose the description below that best fits you.



**I've already registered with Siegel and
have been approved by Siegel for internet bidding**

Internet bidding works by allowing registered bidders to observe and place bids, either before the sale or in real-time during the auction.

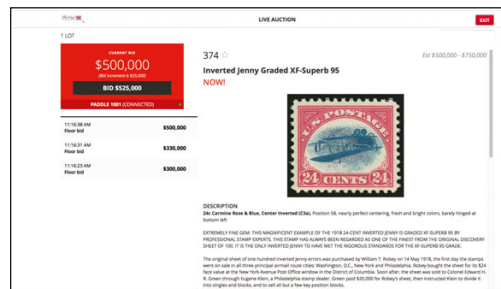
Live Internet Bidding will work with any browser on both PC and Mac operating systems, or with our app..

Before bidding by internet for the first time, we recommend observing an auction in progress. This will help you develop a feel for the sale tempo and bidding interface.

Log in and participate in the auction at bid.siegelauctions.com

When you're logged on as an internet bidder, the bidding interface shows a photo and description of the lot, the current bid (and your bidding status), options for placing competitive bids and buttons with bid increments.

- After you click on a bid amount, the auctioneer is immediately notified of your bid.
- Retracting a bid is not acceptable, so please bid carefully.
- You can track prior realizations from the bidding screen.



I'm a Siegel client, but I'm not registered to bid live
Go to bid.siegelauctions.com and click on **Login** at the top. Then click on the link for **Sign Up Now**. We will match your new signup to your existing account.

I want to become a Siegel client and bid in auctions
Go to bid.siegelauctions.com and click on **Login** at the top. Then click on the link for **Sign Up Now**. You will need to register and provide trade and banking references.

"System Down" or "Lost Connection" events do occasionally happen.

If you have any problems with Live Internet Bidding please call 212-753-6421 for immediate assistance.

Conditions of Sale (please read carefully before bidding)

THE PROPERTY IN THIS CATALOGUE WILL BE OFFERED AT PUBLIC AUCTION BY ROBERT A. SIEGEL AUCTION GALLERIES, INC. ("GALLERIES") ON BEHALF OF VARIOUS CONSIGNORS AND ITSELF OR AFFILIATED COMPANIES. BY BIDDING ON ANY LOT, WHETHER DIRECTLY OR THROUGH A THIRD PARTY, IN PERSON, BY TELEPHONE, FACSIMILE, INTERNET OR BY ANY OTHER MEANS, THE BIDDER ACKNOWLEDGES AND AGREES TO ALL OF THE FOLLOWING CONDITIONS OF SALE.

1. The highest bidder acknowledged by the auctioneer shall be the buyer. The term "final bid" means the last bid acknowledged by the auctioneer, which is normally the highest bid offered. **The purchase price payable by the buyer will be the sum of the final bid and a commission of 18% of the final bid ("buyer's premium"), together with any sales tax, use tax or customs duties due on the sale.**

2. The auctioneer has the right to reject any bid, to advance the bidding at his discretion and, in the event of a dispute, to determine the successful bidder, to continue the bidding or to reoffer and resell the lot in dispute. The Galleries' record of the final sale shall be conclusive.

3. All bids are per numbered lot in the catalogue unless otherwise announced by the auctioneer at the time of sale. The right is reserved to group two or more lots, to withdraw any lot or lots from the sale, or to act on behalf of the seller. The Galleries will execute bidding instructions on behalf of clients, but will not be responsible for the failure to execute such bids or for any errors in the execution of such bids.

4. **Lots with numbers followed by the symbol ° are offered subject to a confidential minimum bid ("reserve"), below which the lot will not be sold. The absence of the symbol ° means that the lot is offered without a reserve. If there is no reserve, the auctioneer has sole discretion to establish a minimum opening bid and may refuse an offer of less than half of the published estimate. Any lot that does not reach its reserve or opening bid requested by the auctioneer will be announced as "passed" and excluded from the prices realized lists after the sale. The Galleries may have a direct or indirect ownership interest in any or all lots in the sale resulting from an advance of monies or goods-in-trade or a guarantee of minimum net proceeds made by the Galleries to the seller.**

5. Subject to the exclusions listed in 5(A), the Galleries will accept the return of lots which have been misidentified or which have obvious faults that were present when the lot was in the Galleries' custody, but not so noted in the lot description. **All disputed lots must be received by the Galleries intact with the original packing material within 5 days of delivery to the buyer but no later than 30 days from the sale date.** (5A) EXCLUSIONS: The following lots may not be returned for any reason, or may not be returned for the reasons stated: i) lots containing 5 or more items; ii) lots from buyers who registered for the pre-sale exhibition or received lots by postal viewing, thereby having had the opportunity to inspect them before the sale; iii) any lot described with "faults," "defects" or a specific fault may not be returned because of any secondary fault; iv) photographed lots may not be returned because of centering, margins, short/nibbed perforations or other factors shown in the illustrations; v) the color of the item does not match the color reproduction in the sale catalogue or website listing; vi) the description contains inaccurate information about the quantity known or reported; or vii) a certification service grades a stamp lower than the grade stated in the description or on an accompanying certificate.

6. Successful bidders, unless they have established credit with the Galleries prior to the sale, must make payment in full before the lots will be delivered. Buyers not known to the Galleries must make payment in full within 3 days from the date of sale. **The Galleries retains the right to demand a cash deposit from anyone prior to bidder registration and/or to demand payment at the time the lot is knocked down to the highest bidder, for any reason whatsoever.** In the event that any buyer refuses or fails to make payment in cash for any lot at the time it is knocked down to him, the auctioneer reserves the right to reoffer the lot immediately for sale to the highest bidder. **Credit cards (Visa, Mastercard and Discover only) can be accepted as payment but will be subject to a 3% non-refundable Convenience Fee, which will be added to the total of the entire invoice (including hammer price, buyer's premium, shipping and transit insurance charges and any applicable taxes). The buyer waives the right to dispute all credit card charges.**

7. If the purchase price has not been paid within the time limit specified above, nor lots taken up within 7 days from the date of sale, the lots will be resold by whatever means deemed appropriate by the Galleries, and any loss incurred from resale will be charged to the defaulting buyer. **Any account more than 30 days in arrears will be subject to a late payment charge of 1½% per month as long as the account remains in arrears. Any expenses incurred in securing payment from delinquent accounts will be charged to the defaulter.** A fee of \$250.00 per check will be charged for each check returned for insufficient funds.

8. All lots are sold as genuine. **Any lot accompanied by a certificate issued by The Philatelic Foundation, British Philatelic Association, Royal Philatelic Society of London or any other authority recognized by the A.I.E.P. in a specific area of expertise, and dated within 5 years of the sale date, is sold "as is" and in accordance with the description on the certificate. Such lots may not be returned for any reason, including but not limited to a contrary certificate of opinion.** Buyers who wish to obtain a certificate for any item that does not have a certificate (dated as above) may do so, provided that the following conditions are met: (i) the purchase price must be paid in full, (ii) the item must be submitted to an acceptable expertizing committee with a properly executed application form within 21 days of the sale, (iii) a copy of the application form must be given to the Galleries, (iv) the Galleries retains the right to resubmit the item for reconsideration, without time limit or other restrictions, for the purpose of obtaining a satisfactory opinion, (v) lots submitted for certification will be considered cleared 90 days from the date of sale, whether or not a certificate has been issued, unless the Galleries issues written approval of a further extension of return privileges, and (vi) in the event the lot is determined to be misidentified or misdescribed, pursuant to 5 and 5(A) of these Conditions, the Galleries will issue a refund to the buyer for the full purchase price and actual certification fees up to \$800.00, but the reimbursement for certificate fees (and related costs) shall not exceed 10% of the hammer price of the lot.

9. Until paid for in full, all lots remain the property of the Galleries on behalf of the seller.

10. Agents executing bids on behalf of clients will be held responsible for all purchases made on behalf of clients unless otherwise arranged prior to the sale.

11. The buyer assumes all risk for delivery of purchased lots and agrees to pay for prescribed shipping costs. **Buyers who receive lots in the U.S. are obligated to pay whatever sales tax or compensating use tax might be due, at any time, and buyers outside the U.S. are responsible for all customs duties.**

12. **The bidder consents that any action or proceeding against it may be commenced and maintained in any court within the State of New York or in the United States District Court for the Southern District of New York, that the courts of the State of New York and United States District Court for the Southern District of New York shall have jurisdiction with respect to the subject matter hereof and the person of the bidder. The bidder agrees not to assert any defense to any action or proceeding initiated by Galleries based upon improper venue or inconvenient forum. The bidder agrees that any action brought by the bidder shall be commenced and maintained only in a Federal Court in the United States District Court for the Southern District of New York or the State Court in the county in which Galleries has its principal place of business in New York. The bidder agrees not to use a public conflict resolution service and not to use any form of social media to publish comments or information about the Galleries and its employees which might harm the Galleries' reputation or business. These Conditions of Sale shall be governed by and construed in accordance with the substantive laws of the State of New York, and shall constitute an agreement that shall be binding on the parties, and their respective heirs, administrators, distributees, successors and assignees.**

SCOTT R. TREPEL, Principal Auctioneer
Auctioneer's License No. 795952

N.Y.C. Department of Consumer Affairs
80 Lafayette Street, New York, N.Y. 10013
Telephone (212) 577-0111

Revised 5/2018

Grades, Abbreviations and Values Used in Descriptions

Grades and Centering

Our descriptions contain detailed information and observations about each item's condition. We have also assigned grades to stamps and covers, which reflect our subjective assessment. For stamps, the margin width, centering and gum are described and graded according to generally-accepted standards (an approximate correlation to numeric grades is provided at right). Although we believe our grades are accurate, they are not always exactly aligned with third-party grading terms or standards for all issues. **A lot may not be returned because a certification service grades a stamp lower than the grade stated in the description. Information from the P.S.E. Stamp Market Quarterly and P.S.E. Population ReportSM is the most current available, but lots may not be returned due to errors or changes in statistics or data.**

Extremely Fine Gem (90-100): The term “Gem” describes condition that is the finest possible for the issue. This term is equivalent to “Superb” used by grading services.







Extremely Fine (80-90): Exceptionally large/wide margins or near perfect centering.

Very Fine (70-85): Normal-size margins for the issue and well-centered with the design a bit closer to one side. “Very Fine and choice” applies to stamps that have desirable traits such as rich color, sharp impression, freshness or clarity of cancel.

Fine (60-70): Smaller than usual margins or noticeably off center. Pre-1890 issues may have the design touched in places.

Very Good (below 60): Attractive appearance, but margins or perforations cut into the design.

Guide to Gum Condition

Gum Categories:	MINT N.H.	ORIGINAL GUM (O.G.)				NO GUM
	 Mint Never Hinged <i>Free from any disturbance</i>	 Lightly Hinged <i>Faint impression of a removed hinge over a small area</i>	 Hinge Mark or Remnant <i>Prominent hinged spot with part or all of the hinge remaining</i>	 Part o.g. <i>Approximately half or more of the gum intact</i>	 Small part o.g. <i>Approximately less than half of the gum intact</i>	 No gum <i>Only if issued with gum</i>
Catalogue Symbol:	★ ★	★	★	★	★	(★)
PRE-1890 ISSUES	<i>Pre-1890 stamps in these categories trade at a premium over Scott value</i>			Scott Value for “O.G.”		Scott “No Gum” Values thru No. 218
1890-1935 ISSUES	Scott “Never Hinged” Values for Nos. 219-771	Scott Value for “O.G.” (Actual value will be affected by the degree of hinging)		Disturbed Original Gum: Gum showing noticeable effects of humidity, climate or hinging over more than half of the gum. The significance of gum disturbance in valuing a stamp in any of the Original Gum categories depends on the degree of disturbance, the rarity and normal gum condition of the issue and other variables affecting quality. For example, stamps issued in tropical climates are expected to have some		
1935 TO DATE	Scott Value for “Unused”					

Covers

Minor nicks, short edge tears, flap tears and slight reduction at one side are normal conditions for 19th century envelopes. Folded letters should be expected to have at least one file fold. Light cleaning of covers and small mends along the edges are accepted forms of conservation. Unusual covers may have a common stamp with a slight crease or tiny tear. **These flaws exist in virtually all 19th century covers and are not always described. They are not grounds for return.**

Catalogue Values and Estimates

For our International auctions, the number range in the right-hand column (e.g. E. 1,000-1,500) is our valuation in U.S. dollars. Our estimates tend to be conservative, as the vast majority of lots sell in the estimate range or above. These are not start prices, and if there is a reserve on a lot the reserve will never exceed the low end of the estimate range. We have quoted the Scott Catalogue value (if applicable) at the end of the description, along with any other appropriate catalogue values such as Stanley Gibbons (SG), Michel, Yvert, Unitrade, etc.).

Because of certain pricing inconsistencies in the *Scott Catalogue*—for example, blocks that have no gum, the absence of premiums for Mint N.H. items, etc.—we cannot guarantee the accuracy of values quoted for multiples, specialized items and collection lots. We generally try to be conservative, but buyers may not return a lot because of a discrepancy in catalogue value due to Scott pricing inconsistencies.

Symbols and Abbreviations (see chart above for gum symbols)

⊞	Block	E	Essay	pmk.	Postmark	No.	Scott Catalogue Number
⊞	Cover	P	Proof	cds	Circular Datestamp	hs	Handstamp
FC	Fancy Cancel	TC	Trial Color Proof	var.	Variety	ms.	Manuscript



British North America

Welcome to the eleventh sale in the series of Scarsdale Collection auctions. This exciting, unreserved, auction is devoted to the popularly collected stamps of Canada and the Maritime Provinces. As with each previous Scarsdale auction, the overall quality of the stamps in this sale is simply breathtaking.

Mint and used examples were collected concurrently, and each stamp was carefully selected by the owner and his dealer agent, Alan E. Cohen, for its exceptional beauty and quality. This extraordinary care in selecting a stamp for inclusion in the collection was applied regardless of the value. As you peruse the pages of the catalogue it will become apparent that many of the stamps are among the finest available, and several are the finest in existence.

Experienced collectors will appreciate the great rarity of these issues in such outstanding condition. In actuality, many stamps of British North America are far more challenging to acquire in premium condition than their counterparts in United States philately. But unlike collecting United States stamps, one can come very close to filling every space in ones album, which the Scarsdale Collection came close to achieving.

Adding to the allure of the stamps in the collection is their provenance. The list reads like a Who's Who of major past collectors and sales: Ferrary, Dale-Lichtenstein, Pratt, Dr. Chang, "Crossings", Gross, Dr. Dauer, "Highlands", to name just a few. Of course, all of the stamps in the Scarsdale Collection are accompanied by recognized and respected certificates of authenticity and condition (often with multiple certificates).

Even if you currently do not collect the stamps of British North America, we highly recommend the Scarsdale Collection to you as an exciting opportunity to begin a new and challenging collecting area. And a great way to start would be to acquire the "balance" lots offered in the auction (lots 642, 643, 780 and 781). On such a solid foundation one could build a collection of great stature.

—CHARLES F. SHREVE



501

MORNING SESSION (LOTS 501-643)
WEDNESDAY, OCTOBER 20, 2021, AT 10:30 A.M.

THE SCARSDALE COLLECTION — PART ELEVEN
BRITISH NORTH AMERICA

CANADA

1851 3-PENCE ON LAID PAPER
ONE OF THE FINEST UNUSED EXAMPLES KNOWN

501 (★) **1851, 3p Red, Laid Paper (1; SG 1).** Unused (no gum), large balanced margins all around, exceptionally fresh color, razor-sharp impression on bright paper clearly showing prominent laid lines

EXTREMELY FINE GEM. THIS IS EASILY ONE OF THE FINEST EXISTING UNUSED EXAMPLES OF THE 1851 3-PENCE BEAVER ON LAID PAPER - COMBINING LARGE MARGINS, BRIGHT COLOR AND IN COMPLETELY SOUND CONDITION.

The first Pence Issues of Canada were printed by the New York firm of Rawdon, Wright, Hatch & Edson, the same firm that printed the New York Postmaster's Provisional and United States 5c and 10c 1847 Issue. The Pence issues show the same fine quality of engraving that distinguishes the U.S. 1847 Issue. The stamps were printed early in 1851 (3p issued April 23), at the same time that RWH&E's contract for providing United States stamps was coming to an end. The 3p design was executed by Sandford Fleming and engraved by Alfred Jones.

Of interesting note, despite the notoriety of the 12p Black, the 3p Red is far rarer in unused condition with no more than 20 unused believed to exist. Of those, nearly all have tight to touching margins and/or plagued with a myriad of faults. This example is one of the rare exceptions having both large margins and in completely sound condition. A quick review of other major offerings - such as the Dale-Lichtenstein Collection - reveals that even the most advanced collections are without an unused example in this choice quality.

Census no. 1-UNC-05. Ex Cloutier and Gross. With 1992 Greene Foundation and 2010 P.F. certificates. Scott \$35,000.00. SG £38,000. Unitrade C\$60,000.00.. E. 20,000-30,000





502

1851 6-PENCE ON LAID PAPER

AN INCOMPARABLE UNUSED EXAMPLE OF THIS RARITY
GRADED XF-SUPERB 95 BY THE PHILATELIC FOUNDATION

- 502 (★) **1851, 6p Slate Violet, Laid Paper (2; SG 2).** Unused (no gum), four impressively large and balanced margins, wonderfully rich color enhanced by the sharp and detailed impression on crisp paper clearly showing the distinctive laid lines

EXTREMELY FINE GEM. AN ASTOUNDING UNUSED EXAMPLE OF THE 1851 6-PENCE ON LAID PAPER WHICH IS GRADED XF-SUPERB 95 BY THE PHILATELIC FOUNDATION — A TESTIMENT TO ITS PHENOMENAL OVERALL QUALITY. THIS IS ARGUABLY THE FINEST IN EXISTENCE.

The 1851 6p Prince Albert issue on laid paper is one of Canada's rarest and most difficult stamps to obtain in unused condition. Very few unused examples exist, with completely sound examples of even greater rarity. Nearly all we are aware of have either uneven or touching margins or are affected by faults which often plague this thin laid paper.

Census no. 2-UNC-03. Ex "Guilford" and Dr. Dauer. With 1986 Greene Foundation and 2014 P.F. certificates (XF-Superb 95). Scott \$30,000.00. SG £50,000.00. Untrade C\$60,000.00 E. 30,000-40,000





503

1851 12-PENCE BLACK ON LAID PAPER

A STUNNING ORIGINAL-GUM EXAMPLE
OF THIS WORLD-CLASS RARITY

503 ★ **1851, 12p Black, Laid Paper (3; SG 4).** Pristine original gum, very lightly hinged, large and even margins all around, strong color, superbly detailed impression on crisp paper

EXTREMELY FINE GEM. A TRULY STUNNING ORIGINAL-GUM EXAMPLE OF THE 1851 12-PENCE BLACK ON LAID PAPER. ONE OF THE MOST CELEBRATED AND DESIRABLE CLASSIC STAMPS OF BRITISH NORTH AMERICA AND AN ICONIC WORLD RARITY. A SUPERB GEM IN ALL REGARDS - LARGE MARGINS, EXCEPTIONALLY FRESH ORIGINAL GUM AND SOUND CONDITION.

The first Pence Issues of Canada were printed by the New York firm of Rawdon, Wright, Hatch & Edson, the same firm that printed the New York Postmaster's Provisional and United States 5c and 10c 1847 Issue. The Pence issues, and particularly the 12-pence, show the same fine quality of engraving that distinguishes the U.S. 1847 Issue. The original die was engraved by Alfred Jones and is based upon the Chalon portrait, which was also used on the stamps of Queensland, Tasmania, Bahamas and New Zealand, among other British colonies. The stamps were printed early in 1851 (12p issued June 14), at the same time that RWH&E's contract for providing United States stamps was coming to an end.

A total of 50,000 stamps were printed from 250 sheets of 200 subjects (two panes of 100). Only 1,450 were sold with the balance being destroyed. Our census, available on our website at <https://siegelauctions.com/census/canada/scott/3>, records a total of seventeen original gum singles plus four pairs.

Census no. 3-OG-05. Ex Melat and Gross. With 1981 Holcombe, 1986 E. Diena and 2009 P.F. certificates. Scott \$175,000.00. SG £200,000. Unitrade C\$300,000.00
..... E. 150,000-200,000





504

1851 12-PENCE BLACK ON LAID PAPER

A SUPERB USED EXAMPLE
OF THIS ICONIC CLASSIC RARITY
ONE OF THE FINEST IN EXISTENCE

504 **1851, 12p Black, Laid Paper (3; SG 4).** Large margins all around, intense shade, superbly detailed impression indicative of an early printing, neat strike of a light target cancel

EXTREMELY FINE. AN EXCEPTIONAL USED EXAMPLE OF THE CANADA 12-PENCE BLACK ON LAID PAPER. AN ICONIC CANADIAN RARITY — AND THAT OF THE ENTIRE BRITISH COMMONWEALTH AND CLASSIC PHILATELY AS A WHOLE. THE REMARKABLE STAMP OFFERED HERE EASILY RANKS AS ONE OF THE FINEST USED EXAMPLES.

The first Pence Issues of Canada were printed by the New York firm of Rawdon, Wright, Hatch & Edson, the same firm that printed the New York Postmaster's Provisional and United States 5c and 10c 1847 Issue. The Pence issues, and particularly the 12-pence, show the same fine quality of engraving that distinguishes the U.S. 1847 Issue. The original die was engraved by Alfred Jones and is based upon the Chalon portrait, which was also used on the stamps of Queensland, Tasmania, Bahamas and New Zealand, among other British colonies. The stamps were printed early in 1851 (12p issued June 14), at the same time that RWH&E's contract for providing United States stamps was coming to an end.

A total of 50,000 stamps were printed from 250 sheets of 200 subjects (two panes of 100). Only 1,450 were sold with the balance being destroyed. Our census, available on our website at <https://siegelauctions.com/census/canada/scott/3>, records a total of 36 used singles, two pairs and four covers. Of the singles, less than one-third are sound with four margins, with few equating to the size of the margins and light cancel of the example offered here.

Census no. 3-CAN-18. Ex Lees-Jones, Amundsen, "Malibu" and Collier. With 1950 R.P.S., 1986 Holcombe, and 2006 Greene Foundation certificates. Scott \$135,000.00. SG £100,000. Unitrade C\$180,000.00 E. 75,000-100,000





505

- 505 **1851, 3p Orange Vermilion, Laid Paper (1a; SG 1a).** Huge to full margins, lovely bright color, neatly struck target cancel, Very Fine and choice, with 2008 P.F. certificate, Scott \$1,000.00, SG £1,100, Unitrade C\$1,600.00 E. 500-750

- 506 **1851, 6p Slate Violet, Laid Paper (2; SG 2).** Four large margins including small portion of adjoining frameline at bottom, bold color and crisp impression on fresh paper, target cancel, Extremely Fine, with 1976 B.P.A., 1981 Greene Foundation, and 2008 P.F. certificates, Scott \$1,500.00, SG £1,300, Unitrade C\$2,000.00 E. 750-1,000



506



507

- 507 ★ **1852, 3p Orange Red (4; SG 5; Unitrade 4ii).** Original gum, lightly hinged, large to ample margins all around, bright color, strong impression on fresh paper

VERY FINE. A CHOICE ORIGINAL-GUM EXAMPLE OF THE 3-PENCE BEAVER IN THE ORANGE-RED SHADE. SELDOM FOUND IN THIS PREMIUM CONDITION.

With 2008 P.F. certificate. Scott \$1,500.00. SG £2,750. Unitrade C\$4,000.00. E. 1,000-1,500

- 508 **1852-55, 3p Orange Red, Thin Paper (4d; SG 7).** Huge to large margins all around, wonderfully rich color, bold impression on fresh paper, lightly struck target cancels, Extremely Fine, ex Dr. Tang, with 2007 P.F. certificate (XF 90), Scott \$225.00, SG £275, Unitrade C\$300.00 E. 200-300



508

- 509 **1855, 6p Slate Gray, Wove Paper (5; SG 9).** Four large balanced margins, lovely warm shade, uncommonly sharp impression, lightly struck "21" numeral cancel of Montreal, Extremely Fine, a particularly handsome example, ex "Crossings", with 1951 R.P.S. and 2006 Greene Foundation certificates, Scott \$1,150.00, SG £1,100, Unitrade C\$1,600.00..... E. 750-1,000



509



510

- 510 (★) **1855, 6p Greenish Gray, Wove Paper (5b; SG 10).** Unused (no gum), large to ample margins all around, fresh color and bold impression

VERY FINE UNUSED EXAMPLE OF THE 6-PENCE ON WOVE PAPER IN THE GREENISH GRAY SHADE. IT IS ESTIMATED THAT NO MORE THAN A DOZEN UNUSED COPIES STILL EXIST, LIKELY FAR FEWER.

Of the unused examples we have been able to locate in major named sales, nearly all have either faults to varying degrees and/or margins touching the design. Ex Dr. Buss. With 2014 P.S.E. and 2015 P.F. certificates. Scott \$23,000.00. SG £45,000. Unitrade C\$40,000.00..... E. 7,500-10,000



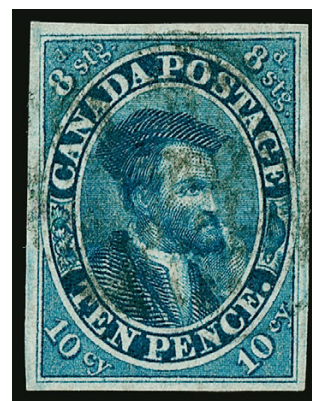
511

- 511 ★ **1855, 10p Blue (7; SG 15).** Original gum, relatively lightly hinged, four large to ample margins, deep rich color, highly detailed impression on bright paper

VERY FINE. A REMARKABLY CHOICE ORIGINAL-GUM EXAMPLE OF THE 1857 10-PENCE CARITER. RARELY ENCOUNTERED IN SOUND ORIGINAL-GUM CONDITION WITH FULL MARGINS.

Ex "Trillium" and "Fordwater". With 1985 B.P.A. (as SG 20B which has since changed) and 2013 P.F. certificates. Scott \$12,000.00. SG £14,000. Unitrade C\$32,000.00 E. 7,500-10,000

- 512 **1855, 10p Blue (7; SG 15).** Large even margins all around, deep rich color and sharp impression, relatively light cancel, Very Fine and choice, a surprisingly challenging stamp to find sound with four margins and lightly cancelled, with 1959 R.P.S. and 2008 P.F. certificates, Scott \$1,600.00, SG £1,800, Unitrade C\$2,400.00 E. 750-1,000



512



513

- 513 ★ **1857, ½p Rose (8; SG 17).** Original gum, lightly hinged, large margins all around, intense color and impression, Extremely Fine, another surprisingly challenging stamp to find with both original gum and in choice condition, ex "Fordwater", with 2013 Greene Foundation certificate, Scott \$1,100.00, SG £1,000, Unitrade C\$2,800.00 E. 750-1,000

- 514 **1857, ½p Rose (8; SG 17).** Mostly large margins all around, gorgeous rich shade, strong impression, light grid cancel, Extremely Fine and choice, with 2008 P.F. certificate, Scott \$700.00, SG £600, Unitrade C\$1,000.00..... E. 400-500



514



515

- 515 ★ **1857, 7½p Green (9; SG 12).** Large part original gum (which covers over half the stamp), full balanced margins all around, deep rich shade with a superbly detailed impression
VERY FINE ORIGINAL-GUM EXAMPLE OF THE 7½-PENCE GREEN VICTORIA. A CONDITION RARITY WITH FULL MARGINS AND ANY REMAINING ORIGINAL GUM.
While still very scarce, unused (no gum) examples are more obtainable. We have found few others, with original gum, that are sound with four margins.
Ex "Trillium". With 2006 Brandon and 2011 P.F. certificates. Scott \$10,000.00. SG £13,000. Unitrade C\$24,000.00..... E. 5,000-7,500

- 516 **1857, 7½p Green (9; SG 12).** Huge to large margins all around including part of adjoining frameline at top, intense color and impression on fresh paper, beautifully struck "27" numeral cancel of Ottawa
EXTREMELY FINE GEM. A MAGNIFICENT USED EXAMPLE OF THE 7½-PENCE GREEN AND EASILY ONE OF THE FINEST WE HAVE ENCOUNTERED.
The 7½p is notorious for having very tight to touching margins. To find an example with margins this size, neatly cancelled and with the overall freshness this stamp exudes is quite remarkable.
Ex "Loch" and "Crossings". With 2008 Greene Foundation certificate. Scott \$3,500.00. SG £2,500. Unitrade C\$5,000.00..... E. 2,000-3,000



516

1857 6-PENCE REDDISH PURPLE ON VERY THICK SOFT WOVE PAPER
AN IMMENSELY RARE COMPLETELY SOUND UNUSED EXAMPLE



517

517 (★) **1857, 6p Reddish Purple, Very Thick Soft Wove Paper (10; SG 23).** Unused (no gum), large to huge margins all around, wonderfully rich color in this distinctive shade found on this stamp, razor-sharp impression on uncommonly bright paper

EXTREMELY FINE GEM EXAMPLE OF THE 6-PENCE REDDISH PURPLE, SCOTT NO. 10. THIS IS THE FINEST UNUSED EXAMPLE WE HAVE ENCOUNTERED. LESS THAN A DOZEN ARE BELIEVED TO EXIST.

Of the less than twelve in private hands, virtually all are no gum and most have faults to some degree (some quite extensive and/or repaired).

Ex Dale-Lichtenstein, "Guilford" and Dr. Dauer. With 1993 and 2014 P.F. certificates. Scott \$22,500.00. SG £48,000. Unitrade C\$40,000.00 E. 20,000-30,000



518

- 518 **1857, 6p Reddish Purple, Very Thick Soft Wove Paper (10; SG 23).** Mostly huge to large margins all around, extraordinarily rich color with proof-like impression on uncommonly bright and fresh paper, neat numeral target cancel

EXTREMELY FINE USED EXAMPLE OF THE 1857 6-PENCE ON VERY THICK SOFT WOVE PAPER. ONE OF THE MOST DIFFICULT PENCE ISSUES TO FIND IN SUCH CHOICE QUALITY, ESPECIALLY WITH SUCH AN EXCEPTIONAL IMPRESSION.

Ex Dr. Tang. Signed Bloch. With 1974 P.F. (photocopy) and 2004 Greene Foundation certificates. Scott \$6,750.00. SG £4,000. Unitrade C\$9,000.00 E. 4,000-5,000

1858-59 PERFORATED PENCE ISSUE



519

- 519 **1858, ½p Rose, Perf 12 (11; SG 25).** Exceptional centering with wide margins for this notoriously tightly spaced stamp with perfs clear of design on all sides, warm shade and strong impression, Extremely Fine, a Gem example of a stamp which is rarely found in this premium quality, ex Collier, with 1999 Greene Foundation and 2009 P.F. certificates (VF-XF 85; a ridiculously conservative grade for this, in our opinion), Scott \$1,500.00, SG £1,000, Unitrade C\$2,500.00 E. 1,000-1,500

- 520 **1858, 3p Red, Perf 12 (12; SG 26).** Bold color, well-centered for this notoriously tightly spaced issue, clear strike of "21" numeral target cancel of Montreal, Very Fine, a choice example of this challenging stamp, with 2009 Sismondo certificate, Scott \$1,400.00, SG £375, Unitrade C\$1,600.00..... E. 500-750



520

1859 6-PENCE BROWN VIOLET, PERFORATED 12

AN ENORMOUSLY RARE ORIGINAL-GUM EXAMPLE
ONE OF CANADA'S MOST CHALLENGING STAMPS TO ACQUIRE



521

- 521 ★ **1859, 6p Brown Violet (13; SG 27).** Large part original gum (virtually full), minor h.r., exceptionally bold color and a razor-sharp impression on bright paper, well-centered for this tightly spaced issue

FINE AND RARE ORIGINAL-GUM EXAMPLE OF THE 1859 6-PENCE PRINCE ALBERT FROM CANADA'S FIRST PERFORATED ISSUE.

The first perforated series of Canada invariably comes with perforations touching on at least one side due to the very narrow spacing between stamps. The values given in Scott take this into account with the footnote stating "values are for examples with perfs touching the design". Those possessing original gum are extremely rare, evidenced by Unitrade valuing those with gum at a 150% premium.

Ex Gross. Signed Bloch. With 1978 R.P.S. (with selvage which no longer accompanies) and 2009 P.F. certificates. Scott \$25,000.00. SG £18,000. Unitrade C\$25,000.00
..... E. 10,000-15,000

1859 PERFORATED CENTS ISSUE



522

- 522 (★) **1859, 1c Rose (14; SG 29).** Unused (no gum), excellent centering, rich shade on bright paper, Extremely Fine, with 2014 Greene Foundation certificate, Scott \$325.00, SG £425, Unitrade C\$600.00 E. 200-300



523

- 523 ★ **1859, 5c Orange Red (15; SG 32; Unitrade 15ii).** Original gum, small h.r., exceptionally well-centered for this notoriously off-centered issue with perfs clear of the design all around, bold shade on fresh paper

EXTREMELY FINE GEM. A REMARKABLE EXAMPLE OF THE 5-CENT BEAVER IN THIS HAND-SOME SHADE. EASILY THE FINEST WE HAVE ENCOUNTERED.

Ex "Fordwater". With 2013 Greene Foundation certificate. Scott \$575.00. SG £450. Unitrade C\$1,875.00..... E. 1,500-2,000

1859 10-CENT BLACK BROWN, PERFORATED $11\frac{3}{4}$

THE FINEST ORIGINAL-GUM EXAMPLE IN EXISTENCE
 LIKELY LESS THAN A HALF-DOZEN EXIST



524

524 ★ **1859, 10c Black Brown (16; SG 33).** Large part original gum (due to presence of a hinge), exceptionally deep rich color distinctive of the first printing, with proof-like impression on bright paper, uncommonly well-centered for this issue with design just touching at top

EXTREMELY FINE. EASILY THE FINEST EXISTING ORIGINAL-GUM EXAMPLE OF THE 1859 10-CENT PRINCE ALBERT IN THE BLACK BROWN SHADE. ONE OF THE RAREST ORIGINAL-GUM STAMPS OF CANADA WITH LESS THAN HALF A DOZEN THOUGHT TO STILL EXIST.

The stamp offered here combines the trifecta of perfection that a fastidious stamp collector seeks - original gum, well-centered and sound condition. A careful review of major named Canada sales will quickly show just how rare an original-gum example in this condition truly is. Most eventually never acquire an example, while others settle for a used copy (scarce in its own right) or trial color.

Ex Dr. Dauer. Signed Bloch. With 1983 (as "unused, OG") and 2014 P.F. certificates. Scott \$25,000.00. SG £18,000. Untrade C\$50,000.00 E. 30,000-40,000

- 525 **1859, 10c Black Brown (16; SG 33).** Exceptionally deep and rich color in this distinctive shade, uncommonly well-centered with perfs clear of design on all sides which is rarely encountered, clear "21" four-ring numeral cancel of Montreal

EXTREMELY FINE. AN EXCEPTIONALLY RARE COMPLETELY SOUND AND WELL-CENTERED USED EXAMPLE OF THE 1859 10-CENT BLACK BROWN FROM THE FIRST PRINTING. EASILY ONE OF THE FINEST IN EXISTENCE.

Ex "Crossings". With 2007 Greene Foundation certificate. Scott \$6,500.00. SG £2,500. Unitrade C\$9,000.00 E. 4,000-5,000



525



526

- 526 ★ **1859, 10c Brown, Perf 11¼ (17b; SG 36).** Original gum, relatively lightly hinged, impressively well-centered with only the bottom frameline just touching the perfs, deep rich shade and strong impression on fresh paper

EXTREMELY FINE. A HIGHLY DESIRABLE ORIGINAL-GUM EXAMPLE OF THE 10-CENT BROWN PRINCE ALBERT. EASILY ONE OF THE FINEST THAT EXISTS.

Ex Dr. Dauer. With 1986 Greene Foundation and 2014 P.F. certificates. Scott \$1,500.00. SG £1,500. Unitrade C\$4,000.00 E. 2,000-3,000

- 527 ★ **1859, 12½c Yellow Green (18; SG 40).** Original gum, h.r., excellent centering for this difficult and tightly spaced issue, deep rich shade on bright paper

EXTREMELY FINE. A PRISTINE ORIGINAL-GUM EXAMPLE OF THE 12½-CENT PERFORATED QUEEN VICTORIA. RARELY ENCOUNTERED IN THIS SUPERB CONDITION.

Ex Firth, Kanee, Julian Smith, Dr. Morris and Gross. With 1986 Greene Foundation and 2009 P.F. certificates. Scott \$850.00. SG £1,200. Unitrade C\$3,125.00 E. 1,500-2,000



527



528

- 528 ★ **1859, 17c Blue (19; SG 42).** Original gum, very lightly hinged, wonderfully precise centering with wide and balanced margins, incredibly bold color with a superbly detailed impression which mimics a proof in intensity

EXTREMELY FINE GEM. ARGUABLY THE FINEST ORIGINAL-GUM EXAMPLE OF THE 17-CENT BLUE PERFORATED CARTIER IN UNRIVALED CONDITION.

The 1859 Perforated Issue is one of the most challenging issues to find such well-centered due to the tight spacing of stamps. Examples of any value which combine the overall centering and freshness this stamp possesses are rarely encountered.

Ex Dr. Tang. Signed A. Diena, E. Diena and Holcombe. With 1994 B.P.A. and 2009 P.F. certificates. Scott \$1,250.00. SG £1,600. Unitrade C\$4,500.00 E. 2,000-3,000



529



530



531

- 529 **1859, 17c Blue, Perf 12 (19; SG 42).** Well-centered, deep rich color with intense impression, faint strike of "37" numeral cancel of Quebec City, Very Fine, with 2009 Sismondo certificate, Scott \$200.00, SG £95, Unitrade C\$300.00 E. 200-300
- 530 ★ **1864, 2c Rose (20; SG 44).** Original gum, lightly hinged, impressively well-centered with framelines clear of perfs on all sides, fresh color, Extremely Fine, rarely encountered in this pristine quality, ex "Fordwater", with 2013 Greene Foundation certificate, Scott \$675.00, SG £600, Unitrade C\$2,000.00 E. 1,000-1,500
- 531 **1864, 2c Deep Claret Rose (20a; SG 44).** Stunning centering with margins clear of perfs on all sides which is rarely encountered, lovely rich color on bright paper, neatly struck part Ottawa duplex cancel, couple shortish perfs at right, Very Fine and choice, rare in this condition, ex "Crossings", with 2004 Greene Foundation and 2010 Sismondo certificates, Scott \$350.00, SG £170, Unitrade C\$500.00 E. 200-300

1868-76 LARGE QUEEN ISSUE

- 532 ★ 1873, ½p Black, Perf 11½ x 12, Line Above “P” of “Postage” (Unitrade 21aii). Original gum, well-centered, bold color, Extremely Fine, ex Roberts and “Calgary”, with 2018 P.F. certificate, Unitrade C\$500.00 E. 200-300



532



533

- 533 ★ 1868, 1c Brown Red (22; SG 55). Original gum, h.r., precise centering with uncommonly wide margins, deep rich shade and a sharp impression

EXTREMELY FINE GEM. A SUPERB ORIGINAL-GUM EXAMPLE OF THE ONE-CENT BROWN RED LARGE QUEEN WHICH HAS BEEN GRADED XF-SUPERB 95 BY THE PHILATELIC FOUNDATION.

Ex Dr. Dauer. With 1981 Greene Foundation and 2014 P.F. certificates (XF-Superb 95). Scott \$800.00. SG £550. Unitrade C\$2,000.00..... E. 1,500-2,000

- 534 ★ 1869, 1c Yellow Orange (23; SG 56a). Original gum, lightly hinged, vibrant color on fresh paper, exceptionally well-centered with wide margins

EXTREMELY FINE GEM. A MARVELOUS EXAMPLE OF THE ONE-CENT YELLOW ORANGE LARGE QUEEN. A SUPERB EXAMPLE WHICH IS GRADED XF-SUPERB 95 BY THE PHILATELIC FOUNDATION.

Ex Jansen, Brigham and “Calgary”. With 2018 P.F. certificate (XF-Superb 95). Scott \$1,750.00. SG £1,100. Unitrade C\$4,000.00 E. 2,000-3,000



534



535

- 535 ★ 1868, 2c Green, Thin Paper (24b; SG 48). Original gum, lightly hinged, excellent centering with wide margins, deep rich shade, strong impression on fresh thin paper, Extremely Fine, with 2010 P.F. certificate, Scott \$950.00, SG £850, Unitrade C\$2,800.00..... E. 750-1,000



536

- 536 ★ **1868, 3c Red, Thin Paper (25b; SG 49).** Original gum, relatively lightly hinged, wonderfully bright shade on crisp paper, exceptionally well-centered with wide margins

EXTREMELY FINE GEM EXAMPLE OF THE 3-CENT RED LARGE QUEEN ON THIN PAPER. A TRUE CONDITION RARITY AND LIKELY ONE OF THE FINEST KNOWN.

Ex Chapin and Gross. With 2009 P.F. certificate. Scott \$2,500.00. SG £1,600. Unitrade C\$6,500.00 E. 2,000-3,000

- 537 ★ **1875, 5c Olive Green (26; SG 63).** Part original gum (covering around half the stamp), outstanding centering with particularly wide margins, deep shade and strong impression

EXTREMELY FINE GEM. ONE OF THE FINEST CENTERED EXAMPLES OF THE 5-CENT OLIVE GREEN LARGE QUEEN.

Ex Schneider and Dr. Dauer. With 1980 P.F. (harshly stating "traces of gum", which is not correct) and 2014 P.F. certificates. Scott \$2,000.00. SG £850. Unitrade C\$5,000.00 E. 1,500-2,000



537



538

- 538 **1875, 5c Olive Green, Perf 11¼ x 12 (Unitrade 26iv; SG 63).** Impressive centering with wide Jumbo margins, deep rich color on bright paper, neat grid cancel, Extremely Fine Gem, a superb used single which would be hard to improve upon, with 2001 Greene Foundation certificate, SG £85, Unitrade C\$270.00..... E. 300-400

- 539 ★ **1868, 6c Dark Brown (27; SG 59).** Plate 1 with distinctive dot below bottom left scroll, original gum, lightly hinged, well-centered, deep rich shade, intense impression on crisp paper, Very Fine, a scarce stamp in this quality with full original gum, ex Roberts, with 1987 and 2007 Greene Foundation certificates, Scott \$2,750.00, SG £1,400, Unitrade C\$6,000.00..... E. 1,000-1,500



539

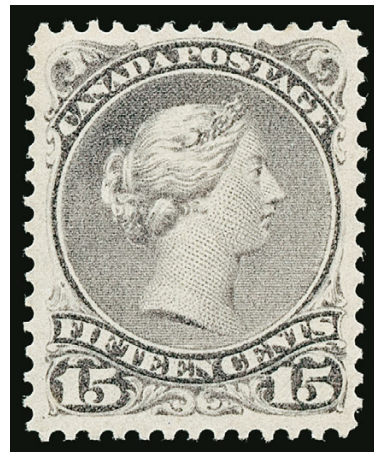
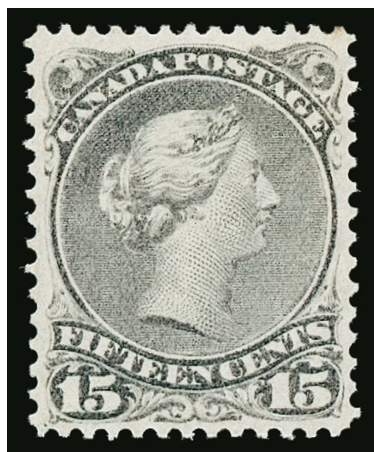


540

- 540 ★ **1868, 12½c Milky Blue (28; SG 60c; Unitrade 28i).** Original gum, lightly hinged, exceptional centering with uncommonly wide margins, lovely color of this distinctive shade

EXTREMELY FINE. A GEM ORIGINAL-GUM EXAMPLE OF THE 12½-CENT LARGE QUEEN IN THE MILKY BLUE SHADE. EASILY ONE OF THE FINEST THAT EXISTS.

Ex Dr. Tang. With 2000 P.F. certificate. Scott \$1,200.00 (as Blue shade). SG £1,000. Unitrade C\$3,000.00..... E. 1,500-2,000



541

- 541 ★ **1868-76, 15c Gray Violet, 15c Slate Gray (29-30; SG 70).** No. 29 Mint N.H., No. 30 original gum, lightly hinged, each wonderfully well-centered with Gray Violet in particularly choice condition, bold colors, Extremely Fine, No. 29 with 2010 Greene Foundation and No. 30 with 2016 Greene Foundation (as mid-1880's printing) certificates, Scott \$180.00, SG £150, Unitrade C\$720.00..... E. 300-400

1868 ONE-CENT RED ON LAID PAPER
 THE FINEST OF THE TWO OR THREE RECORDED
 ORIGINAL-GUM EXAMPLES



542

542 ★ **1868, 1c Brown Red, Laid Paper (31; SG 55a).** Original gum, lovely rich color, strong impression, noticeable laid lines

FINE AND ENORMOUSLY RARE ORIGINAL-GUM EXAMPLE OF THE 1868 ONE-CENT LARGE QUEEN ON LAID PAPER. THIS IS THE FINEST OF THE TWO OR THREE THAT EXIST. ONE OF THE KEY STAMPS FOR THE LARGE QUEEN COLLECTOR AND A MAJOR CANADIAN RARITY.

The Unitrade catalogue notes “fewer than 10 unused copies” of the 1c are recorded. Nearly all are without gum and have faults to some degree. Power Search reveals this is the only original-gum example we have ever offered.

Ex Dale-Lichtenstein (Lot 697 and featured on the color plate), Julian Smith, “Lindemann”, Brigham and “Calgary”. With 1971 and 2018 P.F. certificates. Scott \$45,000.00. SG £25,000. Unitrade C\$82,500.00 E. 30,000-40,000



543

- 543 **1868, 1c Brown Red, Laid Paper (31; SG 55a).** Marvelous centering with wide margins, the design clear of perfs on all sides, deep rich color and strong impression on clear laid paper, grid cancel

EXTREMELY FINE. THIS IS ONE OF THE FINEST USED ONE-CENT LAID PAPER EXAMPLES WE HAVE ENCOUNTERED. EXCEPTIONALLY RARE IN THIS CHOICE CONDITION.

Ex Engel, Chapin, Gross, and "Fordwater". With 1958 P.F. and 2013 Greene Foundation certificates. Scott \$8,000.00. SG £4,000. Unitrade C\$12,500.00 E. 5,000-7,500

1870-97 SMALL QUEEN ISSUE



544

- 544 ★★ **1882, 1/2c Black (34; SG 101).** Mint N.H., enormous Jumbo margins, exceptionally well-centered, deep shade, Extremely Fine Gem, a truly remarkable example which would be nearly impossible to improve upon, with 2009 P.F. certificate, Scott \$45.00, SG £22 as hinged, Unitrade C\$75.00 E. 200-300

- 545 ★★ **1870, 1c Yellow (35; SG 75).** Mint N.H. with part imprint selvage at top (hinged in ungummed selvage only), vibrant shade on fresh paper, exceptionally well-centered, Extremely Fine Gem, a stunning example, with 2002 Greene Foundation and 2007 P.F. certificates (XF 90 which we feel is severely under-graded), Scott \$100.00, SG £50 as hinged, Unitrade C\$180.00 E. 300-400



545



546



547



548

- 546 ★★ **1870, 2c Green, Ottawa Printing (36; SG 103; Unitrade 36i).** Mint N.H., precise centering with wide margins, deep rich color on fresh paper, Extremely Fine Gem, scarce in this superb condition, with 2008 Sismondo certificate, Scott \$170.00, SG £75 as hinged, Unitrade C\$300.00 E. 200-300
- 547 ★★ **1873, 3c Orange Red (37; SG 105).** Mint N.H., perfectly centered with impressively wide and balanced margins, vivid color and strong impression on bright paper, Extremely Fine Gem, a superb example which the certificate notes as from the "1880's printing", ex "Fordwater" and "Calgary", with 2013 Greene Foundation certificate, Scott \$350.00, SG £55 as hinged, Unitrade C\$750.00 E. 500-750
- 548 ★ **1876, 5c Slate Green (38; SG 85).** Original gum, lightly hinged, particularly well-centered, intensely rich color and strong impression, Extremely Fine, an elusive stamp in this premium condition, ex Dr. Dauer, with 1994 and 2014 P.F. certificates, Scott \$800.00, SG £425, Unitrade C\$1,000.00 E. 500-750



549



550



551

- 549 ★★ **1872, 6c Yellow Brown (39; SG 98).** Mint N.H., intense shade and impression, well-centered, Very Fine and choice, ex "Calgary", with 2001 Greene Foundation and 2018 P.F. certificates, Scott \$1,350.00, SG £550 as hinged, Unitrade C\$2,400.00 E. 1,000-1,500
- 550 ★ **1877, 10c Dull Rose Lilac (40; SG 87).** Original gum, beautiful shade on bright paper, especially well-centered with balanced margins, Extremely Fine, ex Roberts and "Calgary", with 2018 P.F. certificate, Scott \$1,600.00, SG £700, Unitrade C\$1,700.00 E. 750-1,000
- 551 ★★ **1888, 3c Bright Vermilion (41; SG 105).** Mint N.H., well-centered with wide margins, wonderfully bright shade, sharp impression on bright paper, Very Fine and choice, with 2011 Sismondo certificate, Scott \$135.00, SG £55 as hinged, Unitrade C\$270.00 E. 200-300



552



553



554

- 552 ★★ **1889, 5c Gray (42; SG 106).** Mint N.H., precise centering with particularly wide margins, bold color and sharp impression on fresh paper, Extremely Fine, seldom encountered in this superb quality, with 2011 Sismondo certificate, Scott \$500.00, SG £110 as hinged, Unitrade C\$900.00 E. 500-750
- 553 ★ **1889, 6c Red Brown (43; SG 107).** Original gum, lightly hinged, flawless centering within absolutely huge margins, lovely shade, sharp impression on fresh paper, Extremely Fine Gem, one of the finest examples we have encountered, ex "Crossings", with 2009 Greene Foundation certificate, Scott \$225.00, SG £50, Unitrade C\$300.00..... E. 200-300
- 554 ★★ **1893, 8c Violet Black (44; SG 117).** Mint N.H., precise centering, intense shade and sharp impression, Extremely Fine, with 2014 P.F. certificate, Scott \$550.00, SG £180 as hinged, Unitrade C\$1,400.00 E. 500-750



555



556



557

- 555 ★★ **1897, 10c Dull Rose (45a; SG 110).** Mint N.H., excellent centering, brilliant color in this Dull Rose shade, Very Fine and choice, with 2010 P.F. certificate, Scott \$1,200.00, SG £275 as hinged, Unitrade C\$2,400.00 E. 750-1,000
- 556 ★★ **1893, 20c Vermilion (46; SG 115).** Mint N.H., outstanding centering with uncommonly wide margins, brilliant color, sharp impression on bright paper, Extremely Fine Gem, a difficult stamp to improve upon in this superb quality, with 2009 Sismondo certificate, Scott \$1,000.00, SG £250 as hinged, Unitrade C\$2,400.00..... E. 1,000-1,500
- 557 ★★ **1893, 50c Blue (47; SG 116).** Mint N.H., excellent centering with wide margins, deep rich color on bright paper, Extremely Fine, this sought-after high value is rarely encountered so choice, ex "Crossings", with 1994 Greene Foundation certificate, Scott \$1,000.00, SG £275 as hinged, Unitrade C\$2,400.00 E. 1,000-1,500

1897 JUBILEE ISSUE



558

- 558 **1897, ½c-50c Jubilee (50-60).** Remarkable group of eleven different values, each individually selected for their exceptional centering with wide margins, quite a few with impressive Jumbo margins, bold colors overall, neatly cancelled, Extremely Fine, a Gem group which would be a challenge to duplicate, ½c with 2003 and 2014 P.F., 6c with 2012 P.F., 10c with 2014 P.F. (XF-Superb 95), 15c with 2006 P.F. and 2014 P.S.A.G. (95 Jumbo), 50c with 2009 Greene Foundation and 2014 P.S.A.G. (98 Jumbo) certificates, Scott \$1,115.50, Unitrade C\$1,496.50(Photo Ex/Website PDF) E. 750-1,000



559



560

- 559 ★★ **1897, ½c Jubilee (50).** Mint N.H., exceptional centering with well-balanced margins, intense shade and crisp impression, Extremely Fine Gem, with 2013 P.F. certificate, Scott \$275.00, Unitrade C\$420.00 E. 200-300
- 560 ★★ **1897, 1c Jubilee (51).** Mint N.H., precise centering with Jumbo margins, incredibly vibrant color, an Extremely Fine Gem in every regard, with 2010 Greene Foundation certificate, Scott \$75.00, Unitrade C\$120.00..... E. 150-200



561



562

- 561 ★★ **1897, 2c and 3c Jubilee (52-53).** Mint N.H., both exceptionally well-centered with wide margins, bold colors, fresh and Extremely Fine, surprisingly scarce in this choice condition, 2c with 2011 P.F. certificate, Scott \$167.50, Unitrade C\$270.00 E. 200-300
- 562 ★★ **1897, 5c Jubilee (54).** Mint N.H., excellent centering, deep rich color with a proof-like impression on crisp paper, Extremely Fine, with 2014 P.F. certificate (XF 90), Scott \$170.00, Unitrade C\$300.00 E. 150-200



563



564

- 563 ★★ **1897, 6c Jubilee (55).** Mint N.H., uncharacteristically well-centered, deep rich color with razor-sharp impression, Extremely Fine, the 6c Jubilee is surprisingly scarce to find this well-centered, with 2013 Greene Foundation certificate, Scott \$575.00, Unitrade C\$900.00..... E. 500-750
- 564 ★★ **1897, 8c Jubilee (56).** Mint N.H., outstanding centering with particularly wide margins, deep intense shade on bright paper, Extremely Fine Gem, a truly remarkable example in every way, with 2007 P.F. certificate (XF-Superb 95), Scott \$300.00, Unitrade C\$600.00..... E. 400-500



565



566

- 565 ★★ **1897, 10c Jubilee (57).** Mint N.H., impressively well-centered with wide margins, deep rich shade and detailed impression, Extremely Fine Gem, a stellar quality example, ex Gross, with 2009 P.F. certificate, Scott \$400.00, Unitrade C\$750.00 E. 400-500
- 566 ★★ **1897, 15c Jubilee (58).** Mint N.H., marvelous centering with wide margins, rich color in an impressively deep shade, Extremely Fine Gem, with 2014 P.F. certificate (XF-Superb 95), Scott \$675.00, Unitrade C\$1,200.00 E. 500-750



567



568

- 567 ★★ **1897, 20c Deep Vermilion, Jubilee (Unitrade 59i).** Mint N.H., perfectly centered with wide margins, absolutely dazzling shade, intensely sharp impression on bright paper, Extremely Fine Gem, a gorgeous stamp that would be nearly impossible to improve upon, with 2007 Sismondo certificate (Gem 100), Scott \$650.00 (as normal shade), Unitrade C\$1,350.00 E. 1,000-1,500
- 568 ★★ **1897, 50c Jubilee (60).** Mint N.H., outstanding centering with particularly wide margins, deep rich shade on bright paper, Extremely Fine Gem, an impressive example with outstanding overall eye-appeal, with 2013 P.F. certificate (XF-Superb 95), Scott \$775.00, Unitrade C\$1,500.00 E. 750-1,000



569

- 569 ★★ **1897, \$1.00 Jubilee (61).** Mint N.H., especially well-centered with wide margins, deep rich color and a highly detailed impression, Extremely Fine, a highly select quality never-hinged One Dollar Jubilee which would be difficult to improve upon, with 2007 P.F. certificate (XF 90), Scott \$2,750.00, Unitrade C\$3,000.00..... E. 1,500-2,000

- 570 **1897, \$1.00 Jubilee (61).** Wide margins with exceptional centering, uncommonly rich color on bright paper, light circular date-stamp, Extremely Fine, a Gem used example in choice quality, with 2010 P.F. certificate, Scott \$650.00, Unitrade C\$1,000.00.... E. 400-500



570



571

- 571 ★ **1897, \$2.00 Jubilee (62).** Original gum, lightly hinged, impressively well-centered with wide margins, deeply rich color, Extremely Fine Gem, ex Dr. Killien, with 2016 P.F. certificate (XF-Superb 95), Scott \$1,300.00, Unitrade C\$2,000.00 E. 1,000-1,500

- 572 **1897, \$2.00 Jubilee (62).** Precise centering within wide margins, deep intense shade and sharp impression, neat circular datestamp, Extremely Fine and handsome example, scarce in this premium condition, with 2007 Greene Foundation certificate, Scott \$550.00, Unitrade C\$600.00..... E. 400-500



572

- 573 ★★ 1897, \$3.00 Jubilee (63). Mint N.H., extraordinarily well-centered with wide margins, intense shade on bright paper

EXTREMELY FINE. AN IMPRESSIVE MINT NEVER-HINGED EXAMPLE OF THE 3-DOLLAR JUBILEE.

With 2010 Greene Foundation certificate.
 Scott \$3,750.00. Unitrade C\$6,000.00.....
 E. 2,000-3,000



573



574

- 574 1897, \$3.00 Jubilee (63). Intense shade and sharp impression, choice centering with wide margins, neat wavy line machine cancel, Extremely Fine, with 2008 P.F. certificate (XF 90), Scott \$1,000.00, Unitrade C\$1,600.00 E. 500-750

- 575 ★★ 1897, \$4.00 Jubilee (64). Mint N.H., wonderfully well-centered, wide margins, deep intense shade on bright paper

EXTREMELY FINE. A STUNNING MINT NEVER-HINGED EXAMPLE OF THE 4-DOLLAR JUBILEE.

With 2012 Greene Foundation certificate.
 Scott \$3,750.00. Unitrade C\$6,000.00.....
 E. 2,000-3,000



575



576

- 576 1897, \$4.00 Jubilee (64). With part imprint selvage at top, neatly complimented by violet town cancel at bottom left, perfect centering with particularly wide margins, deep rich color on bright paper

EXTREMELY FINE GEM. A TRULY SUPERB USED EXAMPLE OF THE \$4.00 JUBILEE. EASILY THE FINEST WE HAVE OFFERED IN OUR AUCTIONS AND GRADED SUPERB 98 BY THE PHILATELIC FOUNDATION.

With 2009 P.F. certificate (Superb 98). Scott \$1,000.00. Unitrade C\$1,600.00
 E. 2,000-3,000



577



578

- 577 ★ **1897, \$5.00 Jubilee (65).** Original gum, lightly hinged, outstanding centering, rich luxuriant color and a well-incised impression, Extremely Fine, an especially choice example of this sought after \$5.00 Jubilee, with 2002 P.F. certificate, Scott \$1,300.00, Unitrade C\$2,000.00..... E. 750-1,000
- 578 **1897, \$5.00 Jubilee (65).** Precise centering with wide margins, deep rich shade, uncommonly light cancel at bottom left, Extremely Fine, a choice example of this popular Jubilee high value, with 2006 Greene Foundation certificate, Scott \$1,000.00, Unitrade C\$1,600.00 E. 750-1,000

1897-1902 MAPLE LEAF AND NUMERAL ISSUES



579

- 579 ★★ **1897, 1/2c-3c Maple Leaf (66-69).** Mint N.H., each example is extraordinarily well-centered with exceptionally wide margins, wonderfully fresh colors, Extremely Fine Gems, 3c with 2010 P.F. certificate (XF-Superb 95), Scott \$502.50, Unitrade C\$900.00 E. 400-500



580



581



582

- 580 ★★ **1897, 5c Dark Blue on Bluish Paper Maple Leaf (70).** Mint N.H., excellent centering, deep intense color and strong impression, Extremely Fine, with 2003 Greene Foundation certificate, Scott \$500.00, Unitrade C\$750.00 E. 300-400
- 581 ★★ **1897, 6c Brown Maple Leaf (71).** Mint N.H., wonderfully choice centering with uncommonly wide margins, deep color, Extremely Fine Gem, a striking example, ex "Crossings", with 1994 Greene Foundation and 2010 Sismondo certificates (XF-Superb 95), Scott \$350.00, Unitrade C\$600.00 E. 400-500
- 582 ★★ **1897, 8c Orange Maple Leaf (72).** Mint N.H., impeccably centered with Jumbo margins, vibrant shade on bright white paper, Extremely Fine Gem, easily one of the finest examples we have encountered in this pristine condition, ex "Crossings", with 1992 Greene Foundation and 2010 Sismondo certificates (XF-Superb 95), Scott \$850.00, Unitrade C\$1,350.00 E. 750-1,000



- 583 ★★ 1898, 10c Brown Violet, Horizontal Wove Paper Maple Leaf (Unitrade 73ii). Mint N.H., outstanding centering with Jumbo margins, deep luxuriant color and a strong impression on fresh paper, Extremely Fine Gem, a remarkable example of this high value Maple Leaf, with 2010 Greene Foundation certificate, Scott \$1,500.00 (as normal No. 73), Unitrade C\$2,400.00 E. 1,000-1,500
- 584 ★★ 1898, ½c Black, 2c Purple, 2c Carmine Numerals (74, 76-77). Mint N.H., each with precise centering with uncommonly wide margins, wonderfully fresh colors on bright paper, Extremely Fine Gems, each with 2007 or 2011 P.F. certificates (XF-Superb 95), Scott \$215.00, Unitrade C\$570.00..... E. 300-400
- 585 ★★ 1898, 1c Gray Green (75). Mint N.H. top right corner selva single, perfect centering with exceptional Jumbo margins, deep rich shade on bright paper, Extremely Fine Gem in all regards, an absolutely stunning example, Scott \$100.00, Unitrade C\$240.00..... E. 200-300
- 586 ★★ 1898, 3c Carmine (78). Mint N.H., excellent centering with wide margins, bright and fresh color, Extremely Fine Gem, a beautiful example, with 2006 P.F. certificate (XF-Superb 95), Scott \$220.00, Unitrade C\$450.00..... E. 200-300
- 587 ★★ 1899, 5c Blue on Bluish Paper (79). Mint N.H., outstanding centering, uncharacteristically wide margins, intensely rich shade and strong impression, Extremely Fine Gem, with 2014 P.F. certificate, Scott \$500.00, Unitrade C\$1,050.00 E. 400-500
- 588 ★★ 1898, 6c Brown (80). Mint N.H., precise centering with particularly wide margins, deep intense shade with a well-incised impression on fresh paper, Extremely Fine Gem, ex Dr. Dauer, with 2014 P.F. certificate, Scott \$400.00, Unitrade C\$900.00 E. 400-500



589

- 589 ★★ **1902, 7c Olive Green (81).** Mint N.H., extraordinarily well-centered with wonderfully wide margins, lovely vibrant color on bright paper, Extremely Fine Gem, with 2011 P.F. certificate (XF-Superb 95), Scott \$280.00, Unitrade C\$900.00..... E. 300-400

- 590 ★★ **1898, 8c Orange (82).** Mint N.H., incredibly well-centered with lavishly wide margins, remarkably bright and fresh color, Extremely Fine Gem, an exceptional example of this stamp, with 2012 P.F. certificate, Scott \$700.00, Unitrade C\$1,800.00 E. 500-750



590



591

- 591 ★★ **1898, 10c Brown Violet (83).** Mint N.H., marvelously well-centered, exceptionally wide margins, rich color and a crisp impression, Extremely Fine Gem, an incredibly challenging stamp to find in this pristine condition, ex "Crossings", with 1992 P.S.E. and 2010 Sismondo certificates (XF-Superb 95), Scott \$900.00, Unitrade C\$2,250.00..... E. 1,000-1,500

- 592 ★★ **1900, 20c Olive Green (84).** Mint N.H., remarkably well-centered with particularly wide margins, gorgeous rich color on bright paper
EXTREMELY FINE. A SUPERB MINT NEVER-HINGED EXAMPLE OF THE 20-CENT OLIVE GREEN NUMERAL.
With 2008 P.F. certificate (XF 90). Scott \$1,300.00. Unitrade C\$3,000.00..... E. 1,000-1,500



592



1898 MAP AND 1903-08 KING EDWARD VII

- 593 ★★ **1898, 2c Imperial Penny Postage (85-86, Unitrade 85i).** Three Mint N.H. examples, No. 86 with selvage at right, wonderfully bright and fresh colors, spectacular centering on each, Extremely Fine Gems, finding comparable examples to these would be surprisingly difficult, No. 85i with 2008 P.F. certificate (XF-Superb 95), No. 86 with 2012 P.F. certificate, Scott \$300.00 (as normal), Unitrade C\$540.00 E. 300-400
- 594 ★★ **1899, 2c on 3c Carmine (87-88).** Both types, Mint N.H., wonderfully choice centering with wide margins, fresh colors with No. 87 a particularly rich shade, Extremely Fine Gems, No. 87 with 2017 Greene Foundation and No. 88 with 2010 Sismondo certificates (XF-Superb 95), Scott \$127.50, Unitrade C\$240.00 E. 150-200
- 595 ★★ **1903, 1c Green, 2c Carmine (89-90).** Mint N.H., each exceptionally well-centered with Jumbo margins, wonderfully bright and fresh, Extremely Fine Gems, 1c ex "Crossings" and with 2008 Greene Foundation certificate, 2c with 2008 Sismondo certificate (XF-Superb 95), Scott \$250.00, Unitrade C\$560.00 E. 300-400
- 596 ★★ **1903, 5c Blue on Blue (91).** Mint N.H., outstanding centering within truly Jumbo margins, rich color on deeply blued paper, Extremely Fine Gem, with 2008 P.F. certificate, Scott \$500.00, Unitrade C\$1,225.00 E. 400-500
- 597 ★★ **1903, 7c Greenish Bister (92b; Unitrade 92i).** Mint N.H., wonderfully well-centered, rich color on bright paper, Extremely Fine, with 2008 P.F. certificate (XF 90), Scott \$650.00, Unitrade C\$2,100.00 E. 500-750



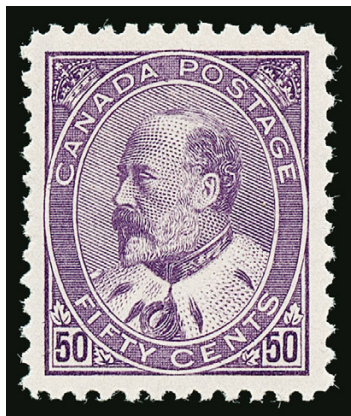
598

- 598 ★★ **1903, 10c Brown Lilac (93).** Mint N.H., marvelously well-centered with particularly wide margins, lovely rich color and a well-defined impression on fresh paper, Extremely Fine Gem, a rare stamp in this stellar quality, ex "Crossings", with 1991 Greene Foundation and 2010 Sismondo certificates (XF-Superb 95), Scott \$1,000.00, Unitrade C\$2,800.00.....
..... E. 1,000-1,500

- 599 ★★ **1904, 20c Deep Olive Green (94a; Unitrade 94i).** Mint N.H., particularly wide margins with excellent centering, deep rich color in this darker shade, Very Fine and choice, with 2015 Greene Foundation certificate as a block of four from which this originates, Scott \$2,100.00, Unitrade C\$4,725.00
..... E. 1,000-1,500



599



600

- 600 ★★ **1908, 50c Purple (95).** Mint N.H., precise centering with wide and balanced margins, outstanding depth of color which is wonderfully rich, razor-sharp impression on bright paper

EXTREMELY FINE GEM. EASILY ONE OF THE FINEST EXAMPLES OF THE 50-CENT KING EDWARD VII OBTAINABLE. AN ESPECIALLY CHALLENGING STAMP TO FIND IN THIS SUPERB QUALITY.

Ex Lewis. With 1991 Greene Foundation and 2014 P.F. certificates (XF-Superb 95). Scott \$2,100.00. Unitrade C\$5,250.00..... E. 3,000-4,000

- 601 **1908, 50c Purple (95).** Exceptionally rich color on bright paper, precise centering with uncommonly wide margins, Extremely Fine Gem, a choice used example, with 2014 P.F. certificate (XF-Superb 95), Scott \$175.00, Unitrade C\$200.00..... E. 200-300



601

1908 QUEBEC TRICENTENARY



602EX

- 602 1908, ½c-20c Tercentenary (96-103). Choice centering throughout, bright colors, neat cancels, Very Fine-Extremely Fine, a highly select used set, 10c with 2008 P.F. (XF 90) and 20c with 2014 P.F. certificates, Scott \$694.00, Unitrade C\$1,021.00 (Photo Ex/Website PDF) E. 400-500



603

- 603 ★★ 1908, ½c-2c Tercentenary (96-98). Mint N.H., each is with precise centering with wide margins, bold colors, Extremely Fine Gems, 1c with 2007 P.F. certificate (XF 90), Scott \$194.00, Unitrade C\$405.00 E. 200-300



604



605



606

- 604 ★★ 1908, 5c Tercentenary (99). Mint N.H., stunning centering with impressively wide margins, bold color and a deeply etched impression, Extremely Fine Gem in every regard, with 2014 Greene Foundation certificate, Scott \$210.00, Unitrade C\$450.00 E. 300-400
- 605 ★★ 1908, 7c Tercentenary (100). Mint N.H., absolutely flawless centering with Jumbo margins, lovely rich color and a bold impression on fresh paper, Extremely Fine Gem, easily one of the finest examples we have encountered, with 2009 Sismondo certificate (Superb 98), Scott \$350.00, Unitrade C\$600.00 E. 400-500
- 606 ★★ 1908, 10c Tercentenary (101). Mint N.H., precise centering with wide margins, deep rich color on bright paper, Extremely Fine, with 2008 P.F. certificate (XF 90), Scott \$500.00, Unitrade C\$900.00 E. 400-500



- 607 ★★ **1908, 15c Tercentenary (102).** Mint N.H., flawless centering with uncommonly wide margins, wonderfully fresh color on bright paper, Extremely Fine Gem, a stunning example of this stamp, with 2009 P.F. certificate (XF-Superb 95), Scott \$550.00, Unitrade C\$1,050.00 E. 750-1,000
- 608 ★★ **1908, 20c Tercentenary (103).** Mint N.H., wonderfully choice centering with wide margins, deep rich color and crisp impression, Extremely Fine, a Gem example of this challenging high value, ex Dr. Tang, with 2004 Greene Foundation certificate, Scott \$625.00, Unitrade C\$1,200.00 E. 750-1,000

1911-25 ADMIRALS

- 609 ★★ **1911-23, 1c-3c Admirals (104e-109).** Mint N.H., 1c Yellow Green shade (104e), exceptional group of six singles, each chosen individually for their outstanding centering with wide and Jumbo margins, brilliant colors, Extremely Fine Gems, a surprisingly challenging group in this superb quality, 104e and 106 with 2014 and 2007 Greene Foundation certificates, 105, 107-109 each with 2007-2011 P.F. certificates (105 and 109 graded XF-Superb 95), Scott \$362.50, Unitrade C\$750.00(Photo Ex/Website PDF) E. 400-500
- 610 ★★ **1925, 4c Yellow Ocher, Dry Printing (110d).** Mint N.H., flawless centering, wonderfully wide margins, lovely rich color, Extremely Fine Gem, with 2012 P.F. certificate (XF-Superb 95), Scott \$130.00, Unitrade C\$240.00 E. 150-200
- 611 ★★ **1912, 5c Dark Blue (111).** Mint N.H., magnificent centering with particularly wide margins, deep luxuriant color and superb impression on bright white paper, Extremely Fine Gem, rarely encountered in this quality, with 2008 P.F. certificate (XF-Superb 95), Scott \$450.00, Unitrade C\$900.00 E. 500-750
- 612 ★★ **1924, 5c Violet, Thin Paper (112a).** Mint N.H., perfectly centered with wide margins, beautiful intense shade, sharp impression on distinctively thin paper, Extremely Fine Gem, a stamp for the perfectionist, with 2007 P.F. certificate (Superb 98), Scott \$87.50, Unitrade C\$150.00 E. 300-400
- 613 ★★ **1912, 7c Yellow Ocher (113).** Mint N.H., particularly wide margins, excellent centering, bold color, Extremely Fine, with 2008 P.F. certificate (XF 90), Scott \$130.00, Unitrade C\$240.00 E. 150-200



- 614 ★★ **1924-25, 7c Red Brown, 8c Blue (114-115).** Mint N.H., each with exceptional centering, 8c Blue with particularly Jumbo margins, bold colors, Extremely Fine Gems, 8c ex "Crossings", 8c with 1992 Greene Foundation and 2009 P.F. certificates, Scott \$147.50, Unitrade C\$285.00 E. 200-300
- 615 ★★ **1912, 10c Deep Brown Purple (116).** Mint N.H., impressively centering with impressively wide margins, deep rich shade on fresh paper, Extremely Fine Gem, the 10c Admiral is surprisingly rare to find in such choice Mint N.H. condition, ex "Crossings", with 1997 Greene Foundation and 2009 P.F. certificates (XF-Superb 95), Scott \$700.00, Unitrade C\$1,200.00 E. 750-1,000
- 616 ★★ **1922-25, 10c Light Blue (Wet Printing), 10c Bister Brown (Dry Printing) (117ii-118).** Mint N.H., both examples with impressive centering and wide margins, deep rich colors on fresh paper, Extremely Fine Gems, No. 117ii with 2008 P.F. certificate (XF-Superb 95), No. 118 with 2017 Greene Foundation certificate, Scott \$215.00, Unitrade C\$420.00 E. 200-300
- 617 ★★ **1925, 20c Olive Green, Dry Printing, Retouched Vertical Line in Upper Right Spandrel (Unitrade 119iv).** Mint N.H., flawlessly centered with Jumbo margins, lovely deep shade on bright paper, Extremely Fine Gem, an exceptional example of this variety, with 2017 Greene Foundation certificate, Scott as normal \$275.00, Unitrade C\$540.00 E. 400-500
- 618 ★★ **1925, 50c Brown Black, Dry Printing (120).** Mint N.H., impeccably well-centered, wide and balanced Jumbo margins, fantastic color on bright paper, Extremely Fine Gem, easily one of the finest examples of this stamp we have encountered, ex "Crossings", with 1992 Greene Foundation and 2009 P.F. certificates (Superb 98 Jumbo), Scott \$200.00, Unitrade C\$420.00 E. 500-750
- 619 ★★ **1923, \$1.00 Orange, Dry Printing (122).** Mint N.H., precise centering with remarkably wide margins, absolutely brilliant color on bright paper, Extremely Fine Gem, with 2009 P.F. certificate (XF-Superb 95), Scott \$215.00, Unitrade C\$360.00 E. 200-300
- 620 ★★ **1912-31 Admiral Coils and Imperforates (123-134, 136-138, 184).** Sixteen Mint N.H. singles beautifully mounted on album page, each example painstakingly sourced individually either through dealer stocks or auctions for their exceptional centering and overall freshness, Extremely Fine Gems, collectors of high quality Canadian Admirals will appreciate the difficulty and time which it takes assemble these coils and imperforates in this choice quality, accompanied by six certificates incl. Nos. 123 (2008 Sismondo XF 90), 124 (2011 Sismondo XF-Superb 95), 127 (2011 Sismondo Superb 98), 130 (2011 Sismondo XF-Superb 95), 132 (2007 P.F. Superb 98) and 133 (2009 Sismondo Superb 98), Scott \$1,423.50, Unitrade C\$2,473.50 (Website PDF) E. 1,000-1,500



621EX



622EX



623

- 621 ★★ **1926, 2c on 3c Carmine (139-140).** Both types of surcharge, Mint N.H., No. 140 with selvage at left, impressively well-centered with wide margins, No. 139 exceptionally so, bold colors, Extremely Fine Gems, No. 139 with 2012 P.F. certificate (Superb 98), Scott \$137.50, Unitrade C\$300.00.....(Photo Ex/Website PDF) E. 150-200
- 622 ★★ **1928-29, 1c-20c Scroll Issue (149-157).** Mint N.H., exceptional centering throughout, bright and fresh colors, Extremely Fine, a choice group, 20c with 2013 P.F. certificate (XF-Superb 95), Scott \$405.00, Unitrade C\$580.00...(Photo Ex/Website PDF) E. 300-400
- 623 ★★ **1929, 50c Bluenose (158).** Mint N.H. with plate "Ottawa No. A-2" selvage at top, remarkably choice centering with wide margins, intense shade and impression on fresh paper, Extremely Fine Gem, with 2009 P.F. certificate (XF-Superb 95), Scott \$425.00, Unitrade C\$700.00 E. 300-400



624



625



626

- 624 ★★ **1929, \$1.00 Parliament (159).** Mint N.H., outstanding centering, wonderfully rich color, crisp impression on fresh paper, Extremely Fine Gem, ex Roberts, with 2007 Greene Foundation certificate, Scott \$575.00, Unitrade C\$900.00..... E. 300-400
- 625 ★★ **1930, 50c Grand Pre (176).** Mint N.H., perfect centering, deep rich color on bright paper, Extremely Fine Gem, a challenging stamp this choice, with 2009 P.F. certificate, Scott \$350.00, Unitrade C\$600.00 E. 200-300
- 626 ★★ **1930, \$1.00 Mt. Cavell (177).** Mint N.H., Jumbo margins with exceptional centering, beautiful rich color on bright white paper, an Extremely Fine Gem in every regard, ex "Crossings", with 1993 Greene Foundation and 2009 P.F. certificates (XF-Superb 95 Jumbo), Scott \$350.00, Unitrade C\$600.00 E. 300-400

BACK-OF-BOOK ISSUES



627



628

- 627 ★★ **1875, 2c Orange, Registration (F1).** Mint N.H., wide and balanced margins, excellent centering not typically associated with this issue, vibrant color, Extremely Fine, seldom encountered this choice, with 2013 P.F. certificate, Scott \$240.00, Unitrade C\$450.00 E. 300-400
- 628 ★★ **1876, 5c Green, Re-Entry (Unitrade F2i var).** Mint N.H., plate II, position 83, showing visible re-entry on second “A” of “Canada”, “S” of “Registered” and “R” of “Letter”, wonderful centering, fresh color, Very Fine and choice, a scarce re-entry in lovely Mint N.H. condition, with 2019 Greene Foundation certificate, Scott as normal \$290.00, Unitrade C\$600.00 without premium for re-entry E. 300-400



629

- 629 ★★ **1876, 8c Blue Registration (F3).** Mint N.H. top left corner selva single, with “EIGHT” imprint in the top selva, incredibly well-centered, stunning proof-like color and impression on fresh paper

EXTREMELY FINE GEM. AN INCOMPARABLE STAMP THAT IS REGARDED AS THE FINEST NEVER-HINGED NO. F3 IN EXISTENCE.

The vast majority of the 8c Registration stamps are poorly centered, have faults, or have various gum maladies. The stamp offered here is the polar opposite. With its flawless centering, beautiful color as fresh as the day it was printed, and pristine original gum that has never been hinged, makes it likely the finest attainable copy. Being a corner selva example adds even more to the stamp's outstanding eye appeal.

Ex “Crossings” and “Calgary”. With 1996 Greene Foundation and 2018 P.F. certificates. Scott \$2,000.00. Unitrade C\$5,400.00 E. 5,000-7,500



- 630 **1876, 8c Blue Registration (F3).** Wonderful centering with particularly wide margins, deep rich shade on bright paper, neat 1877 circular datestamps, Extremely Fine, with 2016 Greene Foundation certificate, Scott \$350.00, Unitrade C\$450.00 E. 200-300
- 631 ★★ **1915-16, 1c-2c War Tax Issues (MR1-MR2, MR3, MR5).** Four pristine Mint N.H. singles, excellent centering, bold colors, Extremely Fine, No. MR3 with 2014 Greene Foundation and MR5 with 2015 P.F. certificates, Scott \$375.00, Unitrade C\$660.00(Photo Ex/Website PDF) E. 300-400
- 632 ★★ **1915, 5c-50c “War Tax” Overprints (Unitrade MR2B-MR2D).** Mint N.H., well-centered, bold colors on fresh paper, Very Fine and choice, a beautiful trio of these scarce overprints, seldom encountered in this choice condition as well-centered and in Mint N.H. condition, ex “Fordwater”, each with 2013 Greene Foundation certificate, Unitrade C\$4,320.00(Photo Ex/Website PDF) E. 1,000-1,500
- 633 **1915, 5c-50c “War Tax” Overprints (Unitrade MR2B-MR2D).** Rich colors, well-centered overall, unusually light cancels, Very Fine and attractive trio of these collectible War Tax stamps, 5c with 2014 P.F. and 50c with 2018 P.F. certificates, Unitrade C\$700.00(Photo Ex/Website PDF) E. 200-300



634

- 634 ★★ **1916, 2c + 1c Brown, Die I (MR4a).** Mint N.H., stunningly well-centered with uncommonly wide margins, deep rich color on fresh paper
- EXTREMELY FINE GEM EXAMPLE OF THE 2-CENT WAR TAX FROM DIE I. THE KEY WAR TAX ADMIRAL STAMP IN THE FINEST CONDITION ATTAINABLE.
- With 2017 Greene Foundation certificate. Scott \$1,900.00. Unitrade C\$4,050.00 E. 1,500-2,000

- 635 ★★ **1916, 2c+1c Carmine Coil, War Tax (MR6).** Mint N.H., exceptional centering with wide margins, intense shade and impression, Extremely Fine Gem, a challenging coil to find in pristine Mint N.H. condition and this well-centered, with 2014 P.F. certificate (XF-Superb 95), Scott \$400.00, Unitrade C\$600.00 E. 300-400

- 636 ★★ **1916, 2c+1c Brown Coil, War Tax Pair (MR7).** Mint N.H., exceedingly wide margins, choice centering, intense color, Extremely Fine Gem, ex Dr. Killien, with 2016 P.F. certificate, Scott \$225.00, Unitrade C\$420.00, Scott erroneously prices a pair at virtually the same price as two singles E. 200-300



636



637

- 637 ★★ **1879, Yellow Brown, Officially Sealed (OX1).** Mint N.H., uncharacteristically well-centered, rich color

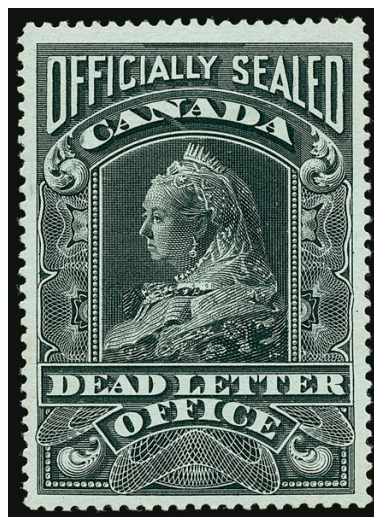
VERY FINE EXAMPLE OF THE 1879 BROWN OFFICIALLY SEALED STAMP IN PRISTINE MINT NEVER-HINGED CONDITION. A CONDITION RARITY AND LIKELY THE FINEST AVAILABLE.

Unitrade states "*VF-NH copies of OX1 are EXTREMELY rare (if they exist).*" This example is "living proof" that an example does exist, leaving us to believe this is likely the finest example attainable. Scott catalogue notes a 25-30% premium for Very Fine examples.

Ex "Calgary". With 2000 and 2018 Greene Foundation certificates. Scott \$2,750.00. Unitrade C\$3,750.00 E. 2,000-3,000



638



639

- 638 **1879, Yellow Brown, Officially Sealed (OX1).** Uncharacteristically well-centered, wonderfully rich color, lightly cancelled, Extremely Fine, a choice used example, the vast majority of which are poorly centered and/or heavily creased due to the nature of its use, with 2013 P.F. certificate (XF 90), Scott \$150.00, Unitrade C\$250.00 E. 200-300
- 639 ★ **1902, Black on Bluish Paper, Officially Sealed (OX2).** Original gum, h.r., well-centered, crisp impression on fresh paper, Very Fine, a choice example of this scarce stamp, with 2018 P.F. certificate, Scott \$700.00, Unitrade C\$800.00 E. 300-400



640



641

- 640 ★★ **1907, Black, Officially Sealed (OX3).** Mint N.H., well-centered, strong shade, Very Fine and choice, not an easy stamp to find in this premium never-hinged condition, ex "Calgary", with 2000 Greene Foundation and 2018 P.F. certificates, Scott \$325.00, Unitrade C\$600.00 E. 200-300
- 641 ★★ **1913, Dark Brown Post Office Seal (OX4).** Mint N.H., uncharacteristically well-centered, strong color with an intense impression on fresh paper, Very Fine and choice, with 2020 P.F. certificate, Scott \$350.00, Unitrade C\$600.00 E. 200-300

SCARSDALE MINT AND USED COLLECTION BALANCES OF CANADA

- 642 ★★ **The Scarsdale Canada Mint Never-Hinged Collection Balance.** Neatly mounted on Scott album pages, begins with No. 135 then predominately complete with few exceptions from 1930s-70s, Back-of-Book with Air Post, Air Post Special Delivery and Official, Special Delivery, Postage Due and Officials all complete, each stamp meticulously selected over the course of years for their Mint N.H. condition, overall freshness and precise centering, six certificates accompany, Extremely Fine throughout, a fantastic head-start to someone looking to collect Gem-quality Canada or a seasoned collector seeking to fill in those "cheaper" spaces, the catalogue value alone for pre-1950s material exceeds \$4,900.00.....
.....(Website PDF) E. 2,000-3,000
- 643 **The Scarsdale Canada Used Collection Balance.** Beautifully mounted in hingeless mounts in a Scott album, begins with 1859 Cents Issue with Nos. 14-15, 17-18, nice range of Large and Small Queens, complete 1897-98 Leaf Issue and most Numerals, predominately complete from 1912 Admirals to about 1970, Back-of-Book with complete Air Posts, Special Delivery, Postage Due and Officials, eight certificates accompany, the catalogue value to 1950 at about \$3,900.00, what sets this collection apart from other "normal" collections is the overall high level of quality, the same level of determination was used by this collector to obtain Gem quality examples, regardless of value, so each stamp was meticulously collected individually and mimics the quality offered in the single lots presented in this sale, mostly Very Fine-Extremely Fine.....
.....(Website PDF) E. 1,500-2,000

END OF MORNING SESSION

AFTERNOON SESSION (LOTS 644-881)
WEDNESDAY, OCTOBER 20, 2021, AT 1:30 P.M.

BRITISH COLUMBIA AND VANCOUVER ISLAND

1865 5-CENT ROSE IMPERFORATE

A SPECTACULAR QUALITY USED EXAMPLE OF THIS RARITY
WITHOUT QUESTION THE FINEST IN EXISTENCE



644

644 **1865, 5c Rose (3, SG 11).** Large balanced margins all around, exceptionally fresh color, razor-sharp impression on fresh paper, beautifully contrasting blue “35” barred numeral cancel of Victoria

EXTREMELY FINE GEM. THIS IS WIDELY REGARDED AS THE FINEST USED EXAMPLE OF THE 5-CENT ROSE IMPERFORATE OF VANCOUVER ISLAND, SCOTT 5. ONE OF THE KEY RARITIES OF BRITISH COLUMBIA & VANCOUVER ISLAND WHICH IS RARELY ENCOUNTERED IN SUCH CHOICE CONDITION.

Examples in any condition - whether unused or used - are exceptionally rare. To find one with full margins, completely sound, neatly cancelled and with the overall freshness this stamp exudes is exceptional. This would make a key item for any Gem quality B.N.A. collection.

Ex Caspary, “Provenance”, “November”, and “Highlands”. Signed Bloch. With 1997 Brandon and 2019 Greene Foundation certificates. Scott \$11,000.00. SG £11,000. Unitrade C\$15,000.00..... E. 10,000-15,000



645



647



648

- 645 ★ **1860, 2½p Dull Rose, Perf 14 (2; SG 3).** Original gum, lightly hinged, exceptionally fresh color with a sharp impression on fresh paper, Very Fine, sound original-gum examples such as this are surprisingly rare, signed Calves, with 2008 P.F. certificate, Scott \$450.00, SG £425, Unitrade C\$1,000.00 E. 500-750



646

- 646 ★ **1865, 10c Blue, Imperforate (4; SG 12).** Original gum, minor h.r., large to full margins all around, deep rich shade on bright paper
 VERY FINE AND CHOICE. A RARE SOUND ORIGINAL-GUM EXAMPLE OF THE 10-CENT BLUE IMPERFORATE.
 With 1977 Brandon and 2008 P.F. certificates. Scott \$5,000.00. SG £2,000. Unitrade C\$7,500.00 E. 3,000-4,000
- 647 **1865, 10c Blue, Imperforate (4; SG 12).** Huge to large margins, rich blue color and detailed impression on fresh paper, neatly struck blue "Paid" oval cancel, Extremely Fine, a particularly choice example of this scarce stamp, with 2014 P.F. certificate, Scott \$1,100.00, SG £900, Unitrade C\$1,500.00 E. 1,000-1,500
- 648 (★) **1865, 5c Rose, Perf 14 (5; SG 13).** Unused (no gum), impressively rich shade with a sharp impression on bright paper, well-centered for this notoriously tightly spaced issue, Very Fine, with 2014 P.F. certificate, Scott \$500.00, SG £350, Unitrade C\$500.00..... E. 200-300



649



650



651



652

- 649 ★ **1865, 3p Pale Blue (7a; SG 22).** Original gum, lightly hinged, impressively well-centered with particularly wide margins, lovely pastel shade on bright paper, Extremely Fine, rarely encountered so choice, with 2004 B.P.A. and 2011 P.F. (as Scott No. 7 but with "Pale Blue" as shade) certificates, Scott \$175.00, SG £120, Unitrade C\$600.00..... E. 200-300
- 650 ★ **1867, 2c on 3c Brown, Perf 14 (8; SG 28).** Original gum, lightly hinged, precise centering which is rarely encountered on this surcharge issue, intensely rich shade, Extremely Fine, a superb example, with 2011 P.F. certificate, Scott \$160.00, SG £170, Unitrade C\$200.00 E. 200-300
- 651 **1867, 2c on 3c Brown, Perf 14 (8; SG 28).** Remarkably well-centered for this horrendously difficult issue, lovely blue "Paid" oval cancel, Extremely Fine, with 2003 A.P.S. certificate, Scott \$150.00, SG £140, Unitrade C\$150.00 E. 150-200
- 652 **1869, 5c on 3p Bright Rose, Perf 14 (9; SG 29).** Truly exceptional centering, rarely encountered on this issue especially with perfs clear of design on all sides, lovely rich shade on bright paper, neat "35" barred numeral cancel, Extremely Fine Gem, a stamp that would be nearly impossible to improve upon, signed Holcombe, with 2003 A.P.S. certificate, Scott \$250.00, SG £160, Unitrade C\$300.00 E. 400-500



653



654



655

- 653 ★ **1867, 10c on 3p Lilac Rose, Perf 14 (10; SG 30).** Original gum, lightly hinged, uncharacteristically rich color, sharp impression on fresh paper, Fine and especially scarce in sound original gum condition, with 2008 P.F. certificate, Scott \$2,000.00, SG £1,400, Unitrade C\$3,600.00..... E. 1,000-1,500
- 654 ★ **1867, 25c on 3p Orange, Perf 14 (11; SG 31).** Original gum, h.r., radiant shade on bright paper, fresh and Fine, ex Dr. Dauer, with 2014 P.F. certificate, Scott \$400.00, SG £250, Unitrade C\$600.00 E. 300-400
- 655 ★ **1867-69, 50c on 3p Violet, Perf 14 (12; SG 32).** Original gum, minor h.r., bright shade, fresh and Fine, ex "Fordwater", with 2013 Greene Foundation certificate, Scott \$900.00, SG £650, Unitrade C\$1,800.00 E. 400-500



656

- 656 ★ **1867-69, \$1.00 on 3p Green, Perf 14 (13; SG 33).**
Original gum, mild h.r., truly spectacular centering, exceptionally rich color

EXTREMELY FINE. A GEM ORIGINAL-GUM EXAMPLE OF THE PERF 14 ONE-DOLLAR SURCHARGE. EASILY ONE OF THE FINEST AVAILABLE.

With 2008 P.F. certificate. Scott \$2,000.00. SG £1,100.
Unitrade C\$3,000.00 E. 1,500-2,000

- 657 ★ **1869, 5c on 3p Bright Red, Perf 12½ (14; SG 23).**
Original gum, small h.r., uncharacteristically well-centered for this issue, deep rich color on bright paper, Very Fine, a choice example which is seldom encountered in this quality, ex Lilly, Chapin, and Gross, with 2009 P.F. certificate, Scott \$2,250.00, SG £1,600, Unitrade C\$4,000.00 E. 1,000-1,500



657



658

- 658 **1869, 5c on 3p Bright Red, Perf 12½ (14; SG 23).**
Uncommonly well-centered, vibrant color on bright paper, partial strike of blue Wells, Fargo & Co., San Francisco oval cancel, Very Fine and choice, a beautiful example, especially so with the Wells, Fargo & Co. cancel, with 1977 Brandon and 2008 P.F. certificates, Scott \$1,300.00, SG £1,200, Unitrade C\$1,800.00 E. 750-1,000

- 659 ★ **1869, 10c on 3p Lilac Rose, Perf 12½ (15; SG 24).**
Original gum, minor h.r., impressively well-centered which is rarely encountered on this issue, lovely rich color on fresh paper, Very Fine and choice, a superb example of this scarce stamp, ex Chapin and Gross, with 2009 P.F. certificate, Scott \$1,300.00, SG £900, Unitrade C\$2,400.00 E. 750-1,000



659



660



661



662

- 660 ★ **1867-69, 25c on 3p Orange, Perf. 12½ (16; SG 25).** Original gum, lightly hinged, vibrant color on bright white paper, Very Fine, ex "Fordwater", with 2013 Greene Foundation certificate, Scott \$1,100.00, SG £600, Unitrade C\$1,500.00 E. 750-1,000
- 661 **1867-69, 25c on 3p Orange, Perf. 12½ (16; SG 25).** Well-centered, wonderfully rich color, clear strike of "8" barred numeral cancel of Clinton, Very Fine, a particularly scarce cancel to find as according to Wellburn, only one sheet of 240 was sent to the Clinton Post Office, ex Wallace, with 2014 Greene Foundation certificate, Scott \$800.00, SG £600, Unitrade C\$750.00 E. 400-500
- 662 ★ **1867-69, 50c on 3p Violet, Perf. 12½ (17; SG 26).** With selvage at right (few separated perfs), original gum, lightly hinged, intensely rich color, well-centered for this issue, Very Fine, a handsome original gum example, with 2009 Sismondo certificate, Scott \$1,600.00, SG £850, Unitrade C\$2,400.00 E. 750-1,000



663



664



665

- 663 **1867-69, 50c on 3p Violet, Perf. 12½ (17; SG 26).** Delightfully well-centered seldom encountered on this issue, warm shade on bright paper, clear strike of "1" barred numeral cancel of New Westminster, Extremely Fine, scarce in this condition, even more so with the New Westminster cancel, ex Wallace, with 2014 Greene Foundation certificate, Scott \$1,000.00, SG £700, Unitrade C\$1,000.00 E. 500-750
- 664 ★ **1867-69, \$1.00 on 3p Green, Perf. 12½ (18; SG 27).** Original gum, lightly hinged, spectacular centering which is rarely encountered on this issue, strong color on bright paper, Extremely Fine, a condition rarity, ex Chapin and Gross, with 2009 P.F. certificate, Scott \$2,500.00, SG £1,300, Unitrade C\$3,600.00 E. 1,000-1,500
- 665 **1867-69, \$1.00 on 3p Green, Perf. 12½ (18; SG 27).** Lovely fresh color on bright paper, relatively well-centered, clear strike of "10" barred cancel of William's Creek, Very Fine and quite scarce, especially with the William's Creek cancel which Wellburn states only two sheets of 240 were sent (only a portion actually sold), ex Collier, with 2000 Greene Foundation and 2009 P.F. certificates, Scott \$1,750.00, SG £1,400, Unitrade C\$2,200.00 E. 750-1,000

NEW BRUNSWICK



666

- 666 ★ **1851, 3p Red (1; SG 1).** Part original gum, mostly large to full margins all around, exceptionally rich color, razor-sharp impression on lovely blued paper, some red offset on reverse

VERY FINE. A RARE PART ORIGINAL-GUM EXAMPLE OF THE 1851 3-PENCE RED FIRST ISSUE OF NEW BRUNSWICK.

Ex Koh and Gross. With 1981 E. Diena and 2009 P.F. certificates. Scott \$5,500.00. SG £4,000. Unitrade C\$10,000.00..... E. 3,000-4,000



667



668

- 667 **1851, 3p Red (1; SG 1).** Mostly large to full margins, bright and fresh color, neatly struck oval grid cancel, Very Fine and choice, a lovely example, with 2002 A.P.S. certificate, Scott \$575.00, SG £425, Unitrade C\$700.00..... E. 300-400

- 668 **1851, 6p Olive Yellow (2; SG 4).** Exceptionally large margins all around, uncommonly large for this issue, vibrant shade, proof-like impression on lightly blued paper, Extremely Fine Gem, an impressive example, with 2007 P.F. certificate, Scott \$1,200.00, SG £800, Unitrade C\$1,600.00..... E. 1,000-1,500



669

669 ★ **1851, 6p Orange Yellow (2a; SG 3).** Original gum, large balanced margins all around, exceptionally vibrant color, intense impression on lightly blued paper

EXTREMELY FINE GEM. A TRULY MAGNIFICENT ORIGINAL-GUM EXAMPLE OF THE 1851 6-PENCE ORANGE YELLOW. EASILY RANKING AS ONE OF THE FINEST IN EXISTENCE. AN AMAZING NEW BRUNSWICK CLASSIC RARITY.

Collectors of Gem quality B.N.A. will appreciate the difficulty in finding an example with large margins, original gum, completely sound and with the overall freshness this stamp possesses.

Ex Dale-Lichtenstein, Chapin, and Gross. With 1970 R.P.S. and 2009 P.F. certificates. Scott \$7,500.00. SG £5,000. Unitrade C\$15,000.00 E. 7,500-10,000

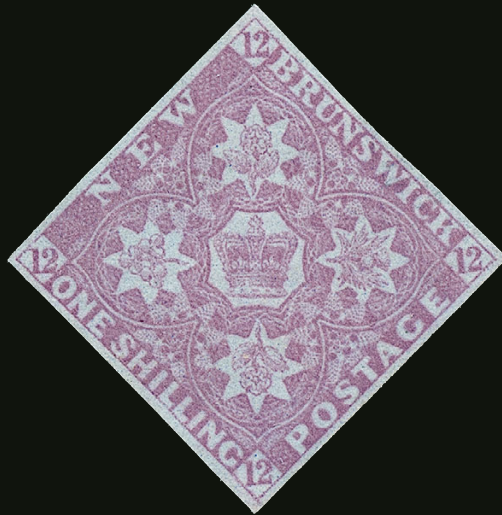


670

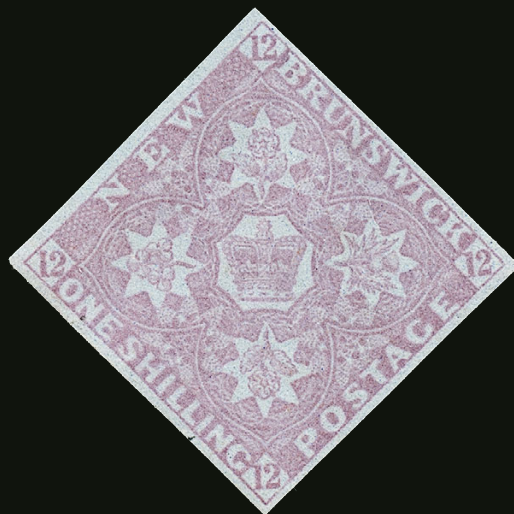
670 **1851, 6p Mustard Yellow (2d; SG 2b).** Impressively huge margins, intensely rich color in this distinctive shade, crisp strike of oval grid cancel

EXTREMELY FINE GEM. EASILY THE FINEST EXAMPLE OF THE 1851 6-PENCE IN MUSTARD YELLOW SHADE THAT WE HAVE ENCOUNTERED. A SUPERB STAMP IN EVERY REGARD.

With 1997 P.S.E. and 2007 P.F. certificates. Scott \$1,400.00. SG £1,500. Unitrade C\$1,800.00 E. 1,500-2,000



671



672

1851 ONE-SHILLING BRIGHT RED VIOLET

AN INCOMPARABLE ORIGINAL-GUM EXAMPLE IN GEM CONDITION

- 671 ★ **1851, 1sh Bright Red Violet (3; SG 5).** Original gum, relatively lightly hinged, large balanced margins, dazzling color in the truest shade possible, razor-sharp impression on wonderfully fresh paper

EXTREMELY FINE EXAMPLE OF THE 1851 ONE-SHILLING BRIGHT RED VIOLET. ONE OF THE FINEST EXISTING EXAMPLES OF THIS CLASSIC NEW BRUNSWICK RARITY. THE EPITOME OF GEM QUALITY.

After a careful review of major named sales containing British North America, many of the examples offered are without gum. Those that have original gum, do not match the overall quality of the example offered here, as they either have faults or margins touching.

Ex Cole, Chapin, and Gross. With 1988 and 2009 P.F. certificates. Scott \$30,000.00. SG £22,000. Unitrade C\$60,000.00..... E. 30,000-40,000

1851 ONE-SHILLING DULL VIOLET

A MAGNIFICENT QUALITY ORIGINAL-GUM EXAMPLE

- 672 ★ **1851, 1sh Dull Violet (4; SG 6).** Original gum, minor h.r., large to full margins all around, sumptuous color in the true Dull Violet shade, proof-like impression on immaculate paper

EXTREMELY FINE GEM. AN INCOMPARABLE ORIGINAL-GUM EXAMPLE OF THE 1851 ONE-SHILLING IN THE DULL VIOLET SHADE. EASILY THE FINEST IN EXISTENCE. ONE OF THE HIGHLIGHTS OF THE SCARSDALE COLLECTION DESTINED FOR A COLLECTION OF THE FINEST QUALITY.

Despite the similarity in catalogue values for original gum examples between the Bright Red Violet (Scott 3; SG 5) and Dull Violet (4; SG 6), such as the stamp offered here, the Dull Violet is excruciatingly more difficult to acquire, especially so in such Gem quality. After a careful review of some of the finest collections of New Brunswick formed, the Dull Violet is noticeably missing from most collections or is collected as with no gum or even used.

Ex Chapin and Gross. Signed A. Diena. With 2009 P.F. certificate. Scott \$35,000.00. SG £25,000. Unitrade C\$70,000.00..... E. 30,000-40,000



673

- 673 **1851, 1sh Bright Red Violet (3; SG 5).** Large to full margins all around, gorgeous rich color, razor-sharp impression on lightly blued paper, neat grid of dots cancel
- EXTREMELY FINE EXAMPLE OF THE 1851 ONE-SHILLING BRIGHT RED VIOLET. RARE IN SUCH SUPERB CONDITION.
- With 1980 Behr, 1997 B.P.A., and 2010 P.F. certificates. Scott \$6,250.00. SG £4,500. Unitrade C\$8,000.00..... E. 3,000-4,000



674

- 674 **1851, 1sh Dull Violet (4; SG 6).** Large to ample margins all around, strong color in this distinctive shade, crisp and detailed impression on fresh paper, beautifully struck blue "8" in oval grid cancel of Chatham and partial circular datestamp
- VERY FINE AND CHOICE. AN EXTREMELY RARE USED EXAMPLE OF THE 1851 ONE-SHILLING DULL VIOLET.
- The 1sh Dull Violet is surprisingly rare in such premium condition. Many we have encountered either are cut into the design, pen cancelled or with faults.
- Ex "Malibu" and Collier. With 1962 Grobe, 1998 B.P.A., and 2006 Greene Foundation certificates. Scott \$7,500.00. SG £5,000. Unitrade C\$10,000.00 E. 4,000-5,000



675EX

- 675 ★ **1860-63, 1c-17c Pictorial Cents Issues (6-11; SG 7/19).** Original gum except 2c unused (no gum), 1c and 12½c with side selvage, 1c with part imprint, 1c, 5c and 12½c **Mint N.H.**, wonderfully well-centered overall, the 2c with exceptionally wide margins, 17c with adhesions on gum, Very Fine-Extremely Fine, 1c with 2009 P.F. and 12½c with 2012 Sismondo certificates, Scott \$480.00, Unitrade C\$870.00.....(Photo Ex/Website PDF) E. 300-400



676EX

- 676 **1860-63, 1c-17c Pictorial Cents Issue (6-11; SG 7/19).** Impressively well-centered overall, each acquired individually over the course of years for their overall superb quality, incl. additional 2c in the Deep Orange shade (posthumous cancel), fresh colors, Very Fine-Extremely Fine, 2c (Scott 7) with 2007 P.F., 2c (Scott 7b) with 2000 Greene Foundation, 5c with 1999 P.F., 10c with 2000 A.P.S. and 17c with 2003 A.P.S. certificates, Scott \$265.00, Unitrade C\$345.00.....(Photo Ex/Website PDF) E. 500-750

NEWFOUNDLAND

- 677 ★★ **1857, 1p Brown Violet (1; SG 1).** Mint N.H., four large margins, deep rich shade and a well-incised impression on fresh paper, Extremely Fine, a pristine Mint N.H. example, with 2009 P.F. certificate, Scott \$300.00, SG £160 as hinged, Unitrade C\$480.00..... E. 200-300



677

1857 2-PENCE SCARLET VERMILION
ONE OF THE FINEST QUALITY UNUSED EXAMPLES EXTANT
WITH AN IMPECCABLE PROVENANCE



678

678 (★) **1857, 2p Scarlet Vermilion (2; SG 2).** Unused (no gum), impressively large margins to ample at top left, gorgeous vivid color and a highly detailed impression on fresh paper

EXTREMELY FINE. A REMARKABLE UNUSED EXAMPLE OF THE 1857 2-PENCE SCARLET VERMILION. RARELY FOUND WITH SUCH LARGE MARGINS IN COMPLETELY SOUND CONDITION. EASILY ONE OF THE FINEST KNOWN.

Power Search reveals only three other unused examples we have offered. This includes one no gum single with tight margins and two original gum copies with faults — highlighting the extreme difficulty in finding Gem quality examples. Our census, available at our website at <https://siegelauctions.com/census/newfoundland/scott/2>, records seventeen unused, four with original gum and thirteen without. Of those, only five are sound, with only two in comparable condition.

Census no. 2-UNC-03. Ex Dale-Lichtenstein, du Pont, Dr. Chan, and Dr. Dauer. Signed Bloch. With 1995 B.P.A. and 2014 P.F. certificates. Scott \$17,500.00. SG £25,000. Unitrade C\$25,000.00..... E. 10,000-15,000

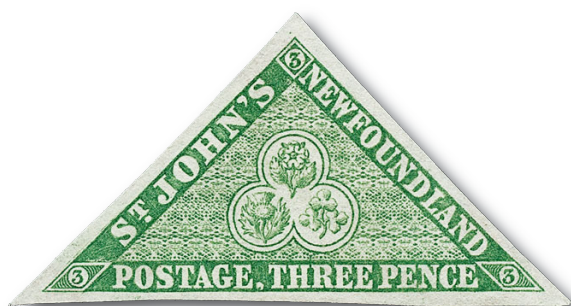


679

679 **1857, 2p Scarlet Vermilion (2; SG 2).** Large to ample margins all around showing the full outer frameline on all four sides, neat grid cancel, intense color with a sharp impression

VERY FINE AND CHOICE EXAMPLE OF THE 1857 2-PENCE SCARLET VERMILION WITH FAR LARGER MARGINS THAN TYPICALLY ENCOUNTERED.

A review of Power Search reveals the last used example of similar quality we have offered was over 25 years ago. Ex Ferrary, Chapin, and Collier. With 1967 B.P.A. and 2009 P.F. certificates. Scott \$7,000.00. SG £6,500. Unitrade C\$12,000.00 E. 4,000-5,000



680



681

680 (★) **1857, 3p Green (3; SG 3).** Unused (no gum), impressively large margins on each side, fresh color and detailed impression on crisp paper, Extremely Fine Gem, scarce in this premium quality, with 2017 Greene Foundation certificate, Scott \$800.00, SG £2,000, Unitrade C\$1,200.00 E. 400-500

681 **1857, 3p Green (3; SG 3).** Mostly large to ample margins, deep rich shade and strong impression, Very Fine, a surprisingly challenging stamp, ex "Highlands", with 2019 Greene Foundation certificate, Scott \$575.00, SG £425, Unitrade C\$800.00... E. 300-400

1857 4-PENCE SCARLET VERMILION
A GEM UNUSED EXAMPLE OF THIS RARITY
ONE OF THE FINEST AVAILABLE



682

682 (★) **1857, 4p Scarlet Vermilion (4; SG 4).** Unused (no gum), exceptionally large margins all around which are rarely found on this stamp, dazzling color with a proof-like impression on bright paper

EXTREMELY FINE GEM. A TRULY SUPERIOR UNUSED EXAMPLE OF THE 4-PENCE SCARLET VERMILION. A MAJOR NEWFOUNDLAND RARITY, ESPECIALLY AS A GEM SOUND EXAMPLE, QUALIFYING IT AS ONE OF THE FINEST KNOWN.

The vast majority of unused examples are plagued with faults and/or have small to touching margins. This stamp is an exception to the norm and is highlighted by the fact that this is only the second unused example we have offered in over 20 years. Our census, available at our website at <https://siegelauctions.com/census/newfoundland/scott/4>, records sixteen unused, three with original gum and thirteen without.

Census no. 4-UNC-05. Ex Jephcott, Caspary, and "Highlands". Signed W.H. Colson. with 2018 Greene Foundation certificate. Scott \$12,500.00. SG £15,000. Unitrade C\$15,000.00 E. 7,500-10,000

- 683 **1857, 4p Scarlet Vermilion (4; SG 4).** Large even margins all around, brilliant color on crisp white paper, neat grid cancel

VERY FINE AND CHOICE. A HIGHLY DESIRABLE USED EXAMPLE OF THE 1857 4-PENCE SCARLET VERMILION.

Ex Collier. With 1967 B.P.A. and 2009 P.F. certificates. Scott \$4,250.00. SG £3,500. Unitrade C\$7,000.00 E. 2,000-3,000



683



684

- 684 ★ **1857, 5p Brown Violet (5; SG 5).** Original gum, lightly hinged, huge to large margins all around including sheet margin at top, remarkably fresh color and a sharp detailed impression, Extremely Fine Gem, a delightful example, with 2008 P.F. certificate, Scott \$325.00, SG £350, Unitrade C\$450.00 E. 200-300

- 685 **1857, 5p Brown Violet (5; SG 5).** Large margins on all four sides, spectacular color on bright paper, neat barred oval cancel, Extremely Fine, a true Gem used example which is far more difficult to acquire than unused, ex "Highlands", with 2019 Greene Foundation certificate, Scott \$600.00, SG £500, Unitrade C\$600.00 E. 500-750



685

1857 6-PENCE SCARLET VERMILION

A TRULY REMARKABLE QUALITY UNUSED EXAMPLE



686

- 686 (★) **1857, 6p Scarlet Vermilion (6; SG 6).** Unused (no gum), marvelously large margins to full at top left, margins the size of which are very rarely seen, exceptionally fresh color, a crisp and proof-like impression on particularly bright paper

EXTREMELY FINE GEM. WITHOUT QUESTION, THIS IS ONE OF THE FINEST UNUSED EXAMPLES OF THE SIX-PENCE SCARLET VERMILION IN EXISTENCE. THE OVERALL FRESHNESS AND SHEER SIZE OF THE MARGINS ARE INCOMPARABLE TO NEARLY ALL THE OTHERS WE HAVE ENCOUNTERED.

Any collector of Newfoundland is well aware of the difficulty in finding a large-margined 6p Scarlet Vermilion. After careful review of other major named sales, we had great difficulty in finding others that compare to the one offered here. Our Power Search reveals only two other unused examples (with and without gum), each with very tight margins to touching. Our census, available at our website at <https://siegelauctions.com/census/newfoundland/scott/6>, records eleven unused, two with original gum and nine without. Of those, only six are sound with no others compare to the margins this stamp possesses.

Census no. 6-UNC-03. Ex Gross. With 1997 B.P.A. and 2009 P.F. certificates. Scott \$27,500.00. SG £28,000. Unitrade C\$30,000.00 E. 15,000-20,000



687

687 **1857, 6p Scarlet Vermilion (6; SG 6).** Large margins all around, strong color and sharp impression, net grid cancel

VERY FINE AND CHOICE USED EXAMPLE OF THE 6-PENCE SCARLET VERMILION. SCARCE IN THIS PREMIUM CONDITION.

Ex Dr. Buss. With 2007 Greene Foundation, 2014 P.S.E., and 2015 P.F. certificates. Scott \$5,000.00. SG £4,750. Unitrade C\$7,000.00..... E. 2,000-3,000



688

688 (★) **1857, 6½p Scarlet Vermilion (7; SG 7).** Unused (no gum), huge margins all around, brilliantly rich color and sharp impression on bright paper

EXTREMELY FINE GEM. AN IMPRESSIVELY SUPERB UNUSED EXAMPLE OF THE 6½-PENCE SCARLET VERMILION OF THE FIRST ISSUE. A RARE STAMP OF NEWFOUNDLAND IN THIS PRISTINE QUALITY.

The 6½p is notorious for tight and/or touching margins. Those that do have margins are often plagued by the myriad of faults associated with this issue. This stamp is one of the rare exceptions.

Ex "Crossings" and Gross. Signed Bloch. With 1968 Friedl, 1992 Greene Foundation, and 2009 P.F. certificates. Scott \$5,000.00. SG £4,500. Unitrade C\$6,000.00... E. 3,000-4,000



689

- 689 **1857, 6½p Scarlet Vermilion (7; SG 7).** Impressively large margins on all four sides, deep rich color and a razor-sharp impression on fresh paper, neat segmented cancel

EXTREMELY FINE. A SUPERB USED EXAMPLE OF THE 6½-PENCE SCARLET VERMILION. EASILY ONE OF THE FINEST IN EXISTENCE.

True Gem quality used examples are seldom encountered and are far scarcer than their unused counterparts. According to Power Search, the last example we offered was over 25 years ago.

Ex "Vaduz", Dale-Lichtenstein, and "Highlands". With 1979 B.P.A. and 2019 Greene Foundation certificates. Scott \$4,000.00. SG £4,750. Unitrade C\$5,500.00 E. 2,000-3,000

- 690 ★★ **1857, 8p Scarlet Vermilion (8; SG 8).** Mint N.H., huge margins on all four sides, deep color and wonderfully sharp impression, Extremely Fine Gem, a handsome example and scarce in Mint N.H. condition, with 2007 P.F. certificate, Scott \$900.00, SG £400 as hinged, Unitrade C\$1,500.00 E. 500-750



690



691

- 691 **1857, 8p Scarlet Vermilion (8; SG 8).** Mostly huge margins all around, intense shade and exceptionally sharp impression on bright paper, light barred oval cancel, Extremely Fine Gem, a handsome example in superb quality, with 2009 P.F. certificate, Scott \$475.00, SG £950, Unitrade C\$800.00 E. 300-400

1857 ONE-SHILLING SCARLET VERMILION

A LOVELY ORIGINAL-GUM EXAMPLE OF THIS CLASSIC RARITY
BELIEVED TO BE ONE OF THE FINEST IN EXISTENCE



692

692 ★ **1857, 1sh Scarlet Vermilion (9; SG 9).** Original gum, h.r.'s, full to ample margins all around, amazingly fresh color with a proof-like impression

VERY FINE. A REMARKABLE ORIGINAL-GUM ONE-SHILLING SCARLET VERMILION, SCOTT NO. 9. THERE ARE ONLY A FEW FOUR-MARGINED, ORIGINAL GUM AND SOUND EXAMPLES IN EXISTENCE. AN EXCEPTIONAL NEWFOUNDLAND RARITY OF THE HIGHEST MAGNITUDE WHICH IS MISSING FROM EVEN THE MOST ADVANCED COLLECTIONS.

Our exhaustive search of numerous well-known Newfoundland collections came up with very few examples that have any trace of original gum - most are unused examples without gum, are tightly margined and/or have faults. This stamp would be a major addition to any serious Newfoundland collection. Our census, available at our website at <https://siegel-auctions.com/census/newfoundland/scott/9>, records 29 unused, ten with original gum. Of those with gum, only five are sound and only one other has large margins.

Census no. 9-OG-04. Ex Ferrary, Chapin, and Gross. Signed Bloch. With 1974 B.P.A. and 2009 P.F. certificates. Scott \$42,500.00. SG £27,000. Unitrade C\$80,000.00 E. 30,000-40,000



693

693 **1857, 1sh Scarlet Vermilion (9; SG 9).** Full margins all around, intensely rich color and a well-incised impression, light grid cancel

VERY FINE. A RARE USED EXAMPLE OF THE ONE-SHILLING SCARLET VERMILION WITH LARGER MARGINS THAN TYPICALLY ENCOUNTERED.

The One-Shilling value of the 1857 Series is notorious for having little or no margins around. In addition, most have faults to some degree. The copy offered here is one of the few four-margin sound examples available.

With 2010 P.F. certificate. Scott \$9,000.00. SG £9,000. Unitrade C\$15,000.00
..... E. 5,000-7,500



694



695

694 ★ **1860, 2p Orange (11; SG 10).** Part original gum, enormous margins all around including sheet margin at top, brilliantly rich color, Extremely Fine Gem, with 1992 P.F. and 2010 Sismondo certificates (XF-Superb 95), Scott \$500.00, SG £600, Unitrade C\$1,200.00.....
..... E. 400-500

695 **1860, 2p Orange, Watermarked (Unitrade 11i; SG 10).** Exceptionally large margins all around, clearly showing "WIS" of "Stacey Wise 1858" watermark, lovely rich color on fresh paper, relatively light grid cancel, Extremely Fine, a Gem quality used example, even rarer with the Watermark, easily one of the finest examples of this collectible variety, ex Boulders, with 1995 P.S.E. and 2007 P.F. certificates, Scott \$525.00 as normal, SG £700 as normal, Unitrade C\$750.00 E. 750-1,000

- 696 ★ **1860, 4p Orange (12; SG 12).** Original gum, lightly hinged, impressively large margins on all four sides, brilliant color with a detailed impression on fresh paper

EXTREMELY FINE AND RARE ORIGINAL-GUM EXAMPLE OF THE 1860 4-PENCE ORANGE, ESPECIALLY SCARCE AND DESIRABLE WITH SUCH LARGE MARGINS.

With 2011 Greene Foundation certificate. Scott \$5,500.00. SG £4,500. Unitrade C\$8,000.00.....
..... E. 3,000-4,000



696



697

- 697 **1860, 4p Orange (12; SG 12).** Large margins all around, bright fresh shade and a sharp impression, neat grid cancel, Extremely Fine and handsome used example, with 2014 P.F. certificate, Scott \$1,350.00, SG £1,100, Unitrade C\$1,800.00 E. 750-1,000

- 698 ★ **1860, 6p Orange (13; SG 14).** Original gum, h.r., full to ample margins, vibrant shade with strong impression on bright paper

VERY FINE. A RARELY OFFERED SOUND FOUR-MARGINED ORIGINAL-GUM EXAMPLE OF THE 1860 6-PENCE ORANGE, SCOTT NO. 13.

Attesting to its rarity, our Power Search reveals only one other example of this caliber. Examples that are completely sound, four margins and with original gum are rarely offered.

Ex Chapin and Gross. With 1977 and 2009 P.F. certificates. Scott \$5,250.00. SG £5,000. Unitrade C\$10,000.00 E. 4,000-5,000



698



699

- 699 **1860, 6p Orange (13; SG 14).** Unusually large and balanced margins, neat grid cancel, rich shade and with a particularly sharp impression, Extremely Fine, a lovely example of this stamp, with 1983 E. Dena and 2008 Greene Foundation certificates, Scott \$1,100.00, SG £800, Unitrade C\$1,600.00 E. 500-750



700

- 700 **1860, 1sh Orange, Watermarked (Unitrade 15ii; SG 15).** Impressively large margins which are rarely encountered on this value in particular, clearly showing top portion of “W” of “Stacey Wise 1858” watermark, exceptionally fresh color and sharp impression, unobtrusive grid cancel

EXTREMELY FINE. A SUPERB USED EXAMPLE OF THE ONE-SHILLING ORANGE SHOWING THE PAPERMAKER'S WATERMARK. EASILY ONE OF THE FINEST USED EXAMPLES MADE RARER BY THIS COLLECTIBLE VARIETY.

Very few of the 1,000 printed show the papermaker's watermark. The 1sh value in particular of the 1860 Issue is notorious for having small or no margins. A review of our Power Search reveals this is one of the largest margined examples of any 1sh we have offered in over 25 years.

Ex “Highlands”. With 2018 Greene Foundation certificate (as normal No. 15). Scott \$12,000.00 as normal. SG £11,000 as normal. Unitrade C\$18,000.00 E. 7,500-10,000



701



702

- 701 (★) **1861-62, 1p Violet Brown, Watermarked (Unitrade 15Aii).** Unused (no gum), large balanced margins all around, deep rich color with a highly detailed impression, clearly showing the “185” of “Stacey Wise 1858” watermark, Extremely Fine, a rarely encountered variety, especially in this choice condition, ex “Crossings” and “Highlands”, with 1994 and 2019 Greene Foundation certificates, Unitrade C\$400.00 E. 300-400

- 702 **1861, 1p Violet Brown (15A; SG 16).** Wonderfully large and balanced margins, deep rich shade, cancelled solely by transit/auxiliary boxed cancels, Extremely Fine, a remarkable example with great eye-appeal, ex Boulders, with 1996 Greene Foundation and 2007 P.F. certificates, Scott \$250.00, SG £450, Unitrade C\$300.00 E. 300-400



703

- 703 ★ **1861, 1p Reddish Brown (16; SG 16a).** Original gum, small h.r., wonderfully large margins, especially so at top, deep rich shade and an exceptional impression on fresh paper

EXTREMELY FINE. A HIGHLY SOUGHT-AFTER SOUND ORIGINAL-GUM EXMAPLE OF THE ONE-PENNY REDDISH BROWN ERROR OF COLOR. AN OFTEN MISIDENTIFIED NEWFOUNDLAND RARITY OF THE HIGHEST MAGNITUDE.

The 1861 1p Reddish Brown was prepared for use but never issued. It was printed in this Reddish Brown shade in error as it was meant for the 5p stamp instead. According to Pratt, only four sheets (480 stamps) were printed with only a small number known to have survived.

Examples which have survived are often found with margins touching on at least one side and/or suffer gum issues (or have been completely removed). Our census, available at our website at <https://siegelauctions.com/census/newfoundland/scott/16>, records 29 unused, only eighteen with original gum.

Census no. 16-OG-17. With 2010 Greene Foundation certificate. Scott \$13,000.00. SG £8,500. Unitrade C\$32,000.00..... E. 7,500-10,000



704



705

- 704 ★★ **1861-62, 2p Rose (17; SG 17).** Mint N.H., enormous margins all around including large sheet margin at top, wonderfully bright color and highly detailed impression on fresh paper, Extremely Fine Gem, an example of true "perfection" in every regard which would be exceptionally difficult to improve upon, ex "Crossings", with 2006 Greene Foundation (as a strip of three from which this originates) and 2010 Sismondo certificates (Gem 100), Scott \$500.00, SG £300 as hinged, Unitrade C\$800.00..... E. 500-750

- 705 **1861-62, 5p Reddish Brown, 5p Chocolate Brown (19, 19b; SG 19-19a).** Both examples with four large balanced margins, wonderfully fresh colors which clearly show the difference in shades accurately, intense impressions, Extremely Fine examples, a beautiful pair in differing shades, ex Boulders, No. 19 with 2001 A.P.S. and 2007 P.F., and No. 19b with 1997 P.S.E. and 2007 P.F. certificates, Scott \$202.50, SG £525, Unitrade C\$300.00 E. 400-500



706



707



708



709

- 706 **1861, 8p Rose (22; SG 22).** Huge to large margins on all four sides, warm shade with a razor-sharp impression, relatively light grid cancel, Extremely Fine Gem, a superb example, especially rare used in this condition, ex Boulders, with 1996 P.S.E. and 2007 P.F. certificates, Scott \$300.00, SG £650, Unitrade C\$375.00..... E. 500-750
- 707 **1861, 1sh Rose (23; SG 23).** Huge margins all around, beautiful rich shade with an uncommonly sharp impression, neat grid cancel, Extremely Fine Gem, a superb example and quite rare in this premium used quality, with 2010 P.F. certificate (XF-Superb 95), Scott \$250.00, SG £300, Unitrade C\$160.00..... E. 200-300
- 708 **1865, 2c Green on Thin Yellowish Paper (24a; SG 25).** With complete “American Bank Note Co. New York” captured imprint at top, exceptionally choice centering which is quite scarce unto itself, unobtrusive circular cancel, Extremely Fine Gem, a striking and stunning example, ex Boulders, with 2003 A.P.S. certificate, catalogued without premium for imprint, Scott \$70.00, SG £110, Unitrade C\$100.00..... E. 300-400
- 709 (★) **1865, 5c Brown (25; SG 26).** Unused (regummed), impressively well-centered for this notoriously difficult stamp, deep rich color and a crisp impression, Extremely Fine Gem, one of the finest centered examples we have encountered, with 2016 Greene Foundation certificate, Scott \$600.00, SG £600, Unitrade C\$800.00 E. 300-400



710



711



712

- 710 **1865, 5c Brown (25; SG 26).** Uncharacteristically well-centered with particularly wide margins, bold color and sharp impression, neatly cancelled, Extremely Fine Gem, easily one of the finest used examples we have encountered of this notoriously difficult stamp, ex Boulders, with 2000 Greene Foundation and 2007 P.F. certificates, Scott \$450.00, SG £180, Unitrade C\$600.00..... E. 500-750
- 711 ★ **1868, 5c Black (26; SG 27).** Original gum, wonderfully well-centered with wide margins, strong shade on fresh paper, Extremely Fine, with 2016 Greene Foundation certificate, Scott \$375.00, SG £375, Unitrade C\$1,200.00 E. 300-400
- 712 **1868, 5c Black (26; SG 27).** Precisely centered with wide margins, bold color, light cork cancel, Extremely Fine Gem, a surprisingly challenging stamp to find this well-centered and in used condition, ex Boulders, with 1997 P.S.E. and 2007 P.F. certificates, Scott \$275.00, SG £110, Unitrade C\$400.00..... E. 200-300



- 713 ★★ **1865, 10c Black on Thin Yellowish Paper (27a; SG 27).** Mint N.H., extraordinarily well centered for this, proof-like color and impression on pristine white paper, Extremely Fine, an impossibly difficult stamp to find in this choice Mint Never-Hinged quality, ex "Crossings" and Dr. Killien, with 2010 Greene Foundation certificate, Scott \$1,275.00, Unitrade C\$1,800.00, SG £375..... E. 1,000-1,500
- 714 ★★ **1865-94, 12c Pale Red Brown, 12c Brown on White (28-29; SG 33, 61).** Mint N.H., each beautifully centered, wonderful rich colors which show the distinctive shades, Extremely Fine, No. 28 with 2008 P.F. and No. 29 with 2007 P.F. certificates, Scott \$390.00, SG £150, Unitrade C\$660.00 E. 300-400
- 715 **1865-94, 12c Pale Red Brown, 12c Pale Red Brown on Thin Yellowish Paper, 12c Brown on White (28, 28a, 29; SG 28, 33).** Three Gem used examples in the two different shades and paper types, exceptionally well-centered and far superior than what is typically encountered, bold colors, each Extremely Fine, a rare trio in this pristine quality, No. 28 and 28a ex Boulders, No. 28 with 2003 A.P.S. and No. 28a with 2001 Greene Foundation certificates, Scott \$292.50, SG £246, Unitrade C\$370.00(Photo Ex/Website PDF) E. 300-400
- 716 ★★ **1865, 13c Orange (30; SG 29).** Mint N.H., well-centered, vibrant fresh color on crisp paper, Very Fine, not an easy stamp to find in this Mint N.H. condition, ex "Crossings", with 1992 Greene Foundation and 2010 Sismondo certificates, Scott \$650.00, SG £120, Unitrade C\$900.00 E. 400-500
- 717 **1865, 13c Orange (30; SG 29).** Impressive centering with particularly wide margins, vibrant color on bright paper, grid cancel, Extremely Fine Gem, a superb quality example which is rarely encountered this choice, ex Boulders, with 1996 P.S.E. and 2007 P.F. certificates, Scott \$115.00, SG £140, Unitrade C\$150.00 E. 200-300
- 718 ★★ **1868, 1c Violet (32; SG 34).** Mint N.H., uncharacteristically precise centering with wide margins, exceptional color and razor-sharp impression on pristine paper, Extremely Fine Gem, a superb Mint N.H. example of this challenging stamp, easily one of the finest available examples, with 2007 P.F. certificate, Scott \$200.00, SG £75, Unitrade C\$600.00 E. 400-500
- 719 ★★ **1871, 1c Brown Lilac, Re-engraved (32A; SG 35).** Mint N.H., remarkably well-centered for this exceptionally difficult stamp, lovely crisp shade on pristine paper, Extremely Fine, an example which would be nearly impossible to improve upon and in a condition which is just superb - well-centered, exceptionally fresh and in Mint N.H. condition, ex "Crossings", with 2008 Sismondo and 2009 Greene Foundation certificates, Scott \$400.00, SG £130, Unitrade C\$1,080.00 ... E. 500-750



- 720 **1868-71, 1c Violet, 1c Brown Lilac (32-32A; SG 34-35).** Each with near perfect centering, wonderfully rich colors showing the clear difference in shades and impressions, lightly cancelled, Extremely Fine Gems, scarce this choice, No. 32 ex Boulders and with 2002 A.P.S. certificate, Scott \$135.00, SG £130, Unitrade C\$180.00...**(Photo Ex/Website PDF)** E. 200-300
- 721 ★ **1870, 3c Vermilion (33; SG 36).** Original gum, lightly hinged, wonderfully well-centered, bright shade on crisp paper, small owner's backstamp, Very Fine, a choice original-gum example, ex "Crossings", with 1994 Greene Foundation and 2010 Sismondo certificates, Scott \$425.00, SG £300, Unitrade C\$650.00..... E. 200-300
- 722 **1870, 3c Vermilion (33; SG 36).** Uncharacteristically well-centered for this difficult issue, lovely rich color on bright paper, lightly cancelled, Extremely Fine Gem, a superb used example and rare in this exceptional quality, ex Boulders, with 2001 Greene Foundation and 2007 P.F. certificates, Scott \$190.00, SG £100, Unitrade C\$250.00..... E. 200-300
- 723 ★★ **1877, 1c Brown Lilac, Rouletted (37; SG 40).** Mint N.H., remarkably fresh, with deep rich color on bright white paper, well-centered, Very Fine and choice, an impossible stamp to obtain in this premium Mint Never-Hinged condition, ex Dr. Killien, with photocopy of 2006 Greene Foundation (for a block) and 2016 P.F. certificates, Scott \$425.00, SG £120, Unitrade C\$800.00 E. 300-400
- 724 ★★ **1879, 2c Green, Rouletted (38; SG 41).** Mint N.H., well-centered with uncommonly wide margins, deep rich color, sharp impression on fresh paper, Extremely Fine and choice, especially scarce and desirable in this condition, with 2008 Sismondo certificate, Scott \$700.00, SG £170, Unitrade C\$1,200.00 E. 500-750
- 725 ★ **1877, 3c Blue, Rouletted (39; SG 42).** Original gum, impressively large margins all around, exceptionally deep rich color on bright paper, Extremely Fine Gem, easily one of the largest margined and best centered examples of this scarce stamp we have encountered, ex "Crossings", with 1994 Greene Foundation certificate, Scott \$425.00, SG £325, Unitrade C\$600.00 E. 400-500
- 726 ★★ **1876, 5c Blue, Rouletted (40; SG 43).** Mint N.H. with selva at right, uncommonly well-centered with wide margins, wonderfully rich color on pristine white paper, Extremely Fine Gem, exceedingly rare in this stunning Mint N.H. condition, with 2007 P.F. certificate, Scott \$700.00, SG £200, Unitrade C\$1,200.00..... E. 750-1,000
- 727 ★★ **1880-96, 1c Edward, Prince of Wales (41-45).** Mint N.H. group of five examples, exceptionally well-centered throughout, bold colors showing the subtle but clear differences between the Brown and later Green shades, No. 42 with couple minute gum skips, Extremely Fine, a remarkable group, No. 41 ex "Crossings" and with 1994 Greene Foundation and 2010 Sismondo (XF-Superb 95), No. 42 with 2014 Greene Foundation, and No. 43 with 2008 P.F. certificates, Scott \$730.00, Unitrade C\$1,700.00.....**(Photo Ex/Website PDF)** E. 500-750



728



729EX



730

- 728 ★★ 1880-96, 2c Deep Yellow Green and Green (Unitrade 46i-47). Both Mint N.H., impressively well-centered, wonderfully fresh colors and strong impressions, Extremely Fine, a scarce pair showing the differences in shades, No. 46i with 2010 Sismondo certificate, Scott \$425.00 (as normal shade), Unitrade C\$1,240.00 E. 400-500
- 729 ★★ 1887, 2c Red Orange, 2c Orange (48, 48b). Mint N.H., well-centered, Orange shade with particularly wide margins, fresh and Very Fine duo, Scott \$180.00, Unitrade C\$360.00...
.....(Photo Ex/Website PDF) E. 150-200
- 730 ★★ 1880, 3c Deep Blue (49b; SG 47). Mint N.H., choice centering, rich dark shade, intense impression on fresh paper, Very Fine and choice, with 2007 P.F. certificate, Scott \$200.00, SG £150, Unitrade C\$480.00..... E. 200-300



731



732



733



- 731 ★★ 1887, 3c Umber Brown, 3c Brown (51-51a; SG 52). Both Mint N.H., both impressively well-centered with wide margins, lovely rich colors which show the subtle difference in shades, Extremely Fine Gems, No. 51 ex Dr. Killien and with 2016 P.F. certificate, No. 51a with 2010 P.F. certificate, Scott \$365.00, Unitrade C\$720.00 E. 400-500
- 732 ★ 1880, 5c Pale Blue (53; SG 48). Original gum, lightly hinged, exceptionally well-centered amid wide margins, attractive color, Extremely Fine, ex Dr. Killien, with photocopy of 2006 P.F. certificate for a block, Scott \$425.00, SG £350, Unitrade C\$600.00. E. 300-400
- 733 ★★ 1880, 5c Bright Blue (55; SG 59a). Mint N.H., well-centered with Jumbo margins, strong color and sharp impression, Extremely Fine, a massive example, with 2007 Greene Foundation certificate, Scott \$160.00, SG £80, Unitrade C\$300.00..... E. 200-300



- 734 ★★ 1887-96, ½c Newfoundland Dog Group (56-58; SG 49, 59, 62). Three select Mint N.H. singles, exceptionally well-centered, wonderfully fresh colors on each example, Extremely Fine Gems, a pristine selection of these three attractive stamps, Scott \$230.00, SG £92, Unitrade C\$480.00..... E. 200-300
- 735 ★★ 1887, 10c Black (59; SG 54). Mint N.H., wonderful centering with particularly wide margins, deep rich shade, Extremely Fine Gem, a most difficult stamp to find in this select quality, with 2008 P.F. certificate, Scott \$300.00, SG £75, Unitrade C\$600.00..... E. 300-400
- 736 ★★ 1897, 1c-60c Cabot's Discovery (61-74; SG 66-79). Mint N.H., exceptional set of these fourteen values, painstakingly chosen individually over the course of years to assemble a truly Gem set, bright and fresh colors, Extremely Fine, easily the finest complete set we have encountered, No. 66 with 2007 P.F. (XF-Superb 95), No. 67 with 2007 Sismondo (XF-Superb 95 Jumbo), No. 69 with 2007 Sismondo (Superb 98), No. 72 with 2009 P.F., and No. 73 with photocopy of 1997 Greene Foundation (as a block, ex "Crossings"), Scott \$662.50, SG £325, Unitrade C\$995.00.....(Photo Ex/Website PDF) E. 500-750
- 737 ★★ 1897, 1c on 3c Gray Lilac, Ty. I (75; SG 80). Mint N.H., uncharacteristically precise centering with wide margins, warm shade on fresh paper, Extremely Fine Gem, with 2014 Greene Foundation certificate, Scott \$190.00, SG £80, Unitrade C\$375.00..... E. 200-300
- 738 ★★ 1897, 1c on 3c Gray Lilac, Ty. II (76; SG 81). Mint N.H., deep rich color, well-centered, Very Fine, a surprisingly challenging stamp, especially in Mint N.H. condition, with 2016 Greene Foundation certificate, Scott \$625.00, SG £170, Unitrade C\$1,200.00 E. 300-400
- 739 1897, 1c on 3c Gray Lilac, Se-Tenant Types I-II (75-76; SG 80-81). Two superb used examples, each particularly well-centered with Jumbo margins, deep rich shades, lightly cancelled, Extremely Fine Gems in particularly choice condition, No. 76 with 2009 Sismondo certificate, Scott \$275.00, SG £160, Unitrade C\$375.00 E. 200-300
- 740 ★ 1897, 1c on 3c Gray Lilac, Ty. III (77; SG 82). Original gum, small h.r., well-centered with particularly wide margins, rich color, Very Fine and quite scarce in this condition, with 1994 Greene Foundation certificate, Scott \$825.00, SG £600, Unitrade C\$1,250.00 E. 400-500



741



742EX



743EX

- 741 1897, 3c on 1c Gray Lilac, Ty. III (77; SG 82). Uncommonly well-centered with wide margins, fresh color, lightly cancelled, Very Fine and choice, with 2007 Greene Foundation certificate, Scott \$700.00, SG £500, Unitrade C\$1,000.00 E. 400-500
- 742 ★★ 1910, 1c-15c Tercentenary of Newfoundland (87-97; SG 95-105, 108). Mint N.H. set of all twelve values plus No. 88a (SG 107), exceptionally well-centered overall, bright and fresh colors, each stamp meticulously selected over the course of years to form this impressive set, Extremely Fine, easily the finest set we have encountered, which would be painstaking to recreate, 4c with 2008 Sismondo (XF-Superb 95), 6c with 2016 P.F., 8c and 12c with 2014 Greene Foundation, and 9c and 10c with 2009 Greene Foundation certificates, Scott \$1,228.00, SG £487, Unitrade C\$2,757.00.....(Photo Ex/Website PDF) E. 750-1,000
- 743 ★★ 1911, 6c-15c Tercentenary of Newfoundland, Perf 14 (98-103; SG 111-116). Mint N.H. set of six values, impeccable centering with each item individually selected for their overall superb quality traits, fresh and Extremely Fine set, a finer set would be exceptionally challenging to assemble, 8c with 2008 P.F. (XF-Superb 95), 9c with 2008 P.F. (XF 90), 10c with 2011 P.F. (XF-Superb 95 XQ), 12c with 2009 Sismondo, and 15c with 2019 P.F. certificates, Scott \$805.00, SG £300, Unitrade C\$1,450.00(Photo Ex/Website PDF) E. 500-750



744



745

- 744 ★★ 1920, 3c on 15c Scarlet, Type I Surcharge (128; SG 145). Mint N.H., wonderfully well-centered, bright color on fresh paper, Extremely Fine, Scott \$350.00, SG £250, Unitrade C\$600.00 E. 200-300
- 745 1920, 3c on 15c Scarlet, Type I Surcharge (128; SG 145). Choice centering with wide margins, bright shade, neat Sept. 19, 1920 circular datestamp, Extremely Fine, with 2008 Sismondo certificate, Scott \$240.00, SG £275, Unitrade C\$350.00 E. 150-200

NEWFOUNDLAND AIR POST ISSUES

1919 THREE-CENT "HAWKER" AIR POST

A GEM QUALITY LIGHTLY-HINGED EXAMPLE



746

746 ★ **1919, 3c Red Brown, Hawker Air Post (C1; SG 142).** Manuscript initials "J.A.R." on reverse, original gum, lightly hinged, wonderfully well-centered since nearly all other examples are centered towards the top, rich color on especially fresh paper

VERY FINE AND CHOICE ORIGINAL-GUM EXAMPLE OF THE FAMOUS NEWFOUNDLAND 1919 HAWKER AIR POST, SCOTT NO. C1. NO MORE THAN 87 UNUSED CAN EXIST AND A HIGHLY SOUGHT-AFTER AIR POST STAMP OF THE WORLD.

This flight famously ended with a controlled crash landing in the ocean after about 13 hours of flying. Postmaster J. A. Robinson of St. John's overprinted 200 stamps for the special flight. No more than 87 unused stamps can still exist, though the actual number of surviving copies is probably quite lower. In addition to these, 95 were used and 18 were defective and subsequently destroyed.

With 2008 P.F. certificate. Scott \$25,000.00. SG £22,000. Unitrade C\$40,000.00.....
..... E. 10,000-15,000

- 747 ★★ 1919, \$1.00 on 50c Scarlet, Air Post (C2; SG 143). Mint N.H., exceptional centering with wide margins, vibrant and fresh color on bright paper, Extremely Fine Gem, a superb example, with 2014 Greene Foundation certificate, Scott \$325.00, SG £130, Unitrade C\$600.00..... E. 200-300



747



748

- 748 ★★ 1919, \$1.00 on 15c Scarlet, Air Post, Without Comma After "Post" (C2a; SG 143a). Mint N.H., impressively well-centered with wide margins, brilliant color on bright paper, Extremely Fine, with 2007 P.F. certificate, Scott \$350.00, SG £160, Unitrade C\$700.00..... E. 200-300

- 749 ★★ 1919, \$1.00 on 50c Scarlet, Air Post (C3; SG 148). Mint N.H., remarkably well-centered, wide margins, intense color, Extremely Fine, Scott \$240.00, SG £150, Unitrade C\$400.00 E. 150-200



749



750

1927 "DE PINEDO" AIR POST

AN INCOMPARABLE QUALITY ORIGINAL-GUM EXAMPLE
OF THIS SOUGHT-AFTER AIR POST RARITY

750 ★ **1927, 60c Black, De Pinedo Air Post (C4; SG 163).** Original gum, lightly hinged, wonderfully well-centered, intense shade and razor-sharp impression

EXTREMELY FINE ORIGINAL-GUM EXAMPLE OF THE 1927 DE PINEDO AIR POST STAMP OF NEWFOUNDLAND. ONE OF THE KEY AIR POST RARITIES OF WHICH ONLY 33 UNUSED EXAMPLES ARE POSSIBLE OF THE 300 PRINTED.

Francesco de Pinedo was an Italian aristocrat who first served in the Italian military, and flew aerial reconnaissance missions in World War I. In 1924 he transferred to the newly-formed independent Italian Air Force. He soon requested a leave of absence, and flew 35,000 miles to Australia and the Far East before flying back. On his return he was appointed lieutenant colonel by Benito Mussolini for his achievement for Italian aviation.

In 1927 De Pinedo embarked on his next venture, with the backing of Mussolini and Italo Balbo, the minister of Italian aviation: a double crossing of the Atlantic Ocean. He selected a Savoia-Marchetti S.55 catamaran flying boat, named *Santa Maria* in honor of Columbus. He first flew down the west coast of Africa before crossing to Rio de Janeiro, where bad weather forced them down. After some time in South America, they headed north, landing in New Orleans on March 29. In early April they landed near Roosevelt Dam in Arizona, where a spectator threw a match into the water, igniting gasoline on the surface which consumed the plane in flames.

A substitute plane was shipped from Italy to New York. The ever-fastidious De Pinedo returned to New Orleans to restart his flight, going to Chicago, Montreal and Trepassy, Newfoundland, which was the final stop before recrossing the Atlantic.

De Pinedo departed Newfoundland for the Azores on May 30, 1927. Strong headwinds caused the *Santa Maria II* to run out of fuel and land in the ocean 200 miles short of the Azores. Towed by passing ships to the Azores, they refueled and then backtracked to the point of their ocean landing to resume their trip, traveling to Lisbon, Barcelona and finally Rome, where Mussolini promoted him to General. In 1933, De Pinedo was killed on takeoff when attempting a non-stop 6,000-mile flight from New York to Baghdad.

This stamp was issued for use on mail carried aboard the De Pinedo return flight to Europe. A total of 300 stamps were overprinted for this special flight. Of those, four were damaged and destroyed. 66 copies were presented to de Pinedo and government officials with between 225-255 used on covers. It is believed that only 33 unused are possible. Attesting to its rarity, the last unused example we offered was 25 years ago in the Passano Collection (Sale 778).

Ex Gross. With 1968 B.P.A. and 2009 P.F. certificates. Scott \$45,000.00. SG £42,000. Unitrade C\$70,000.00..... E. 30,000-40,000

1927 "DE PINEDO" AIR POST
A SELECT QUALITY USED EXAMPLE



751

751 **1927, 60c Black, De Pinedo Air Post (C4; SG 163).** Impressive centering, bold color on fresh paper, usual machine cancel

EXTREMELY FINE. A SUPERB USED EXAMPLE OF THIS CELEBRATED AND DESIRABLE NEWFOUNDLAND DE PINEDO AIR POST RARITY. ITS THOUGHT THAT OF THE 300 PRINTED, ONLY 75-100 STILL EXIST USED OR ON COVER.

This stamp was issued for use on mail carried aboard the De Pinedo return flight to Europe. A total of 300 stamps were overprinted for this special flight. Of those, four were damaged and destroyed. 66 copies were presented to de Pinedo and government officials with between 225-255 used on covers.

Ex "Crossings". With 1957 P.F., 1993 Greene Foundation and 2010 P.F. certificates. Scott \$17,500.00. SG £13,000. Unitrade C\$25,000.00 E. 7,500-10,000



752

- 752 ★★ **1930, 50c on 36c Olive Green, Columbia Air Post (C5; SG 191).** Mint N.H., position 2, exceptional centering, deep intense color and a superbly detailed impression

EXTREMELY FINE. A PRISTINE MINT NEVER-HINGED EXAMPLE OF THE 1930 COLUMBIA AIR POST STAMP. ONE OF THE FINEST RECORDED AND AWARDED A GRADE OF XF-90 BY THE PHILATELIC FOUNDATION.

The Newfoundland government overprinted 300 copies of the 36c "Caribou" issue for use on this flight. Only 100 were actually used: 65 from St. John's and 35 from Harbour Grace. After flying 2,650 miles, the plane was forced down at Tresco Island, off the coast of England. The "Columbia" was able to finish the flight, landing at Croydon Airport on October 13.

Signed Sanabria and Roumet. With 1994 Holcombe and 2008 P.F. certificates (XF 90). Scott \$13,000.00. SG £6,000 (as hinged). Unitrade C\$24,000.00 E. 7,500-10,000



753

- 753 **1930, 50c on 36c Olive Green, Columbia Air Post (C5; SG 191).** Excellent centering, deep rich color on bright paper, lightly struck Harbour Grace circular datestamp

VERY FINE AND CHOICE. A RARE USED EXAMPLE OF THE 1930 50-CENT COLUMBIA AIR POST STAMP, SCOTT NO. C5. A NEWFOUNDLAND RARITY WITH ONLY 35 PIECES OF MAIL WITH THIS SPECIALLY SURCHARGED STAMP WERE CARRIED ON THIS FLIGHT FROM HARBOUR GRACE.

The Newfoundland government overprinted 300 copies of the 36c "Caribou" issue for use on this flight. Only 100 were actually used: 65 from St. John's and 35 from Harbour Grace. After flying 2,650 miles, the plane was forced down at Tresco Island, off the coast of England. The "Columbia" was able to finish the flight, landing at Croydon Airport on October 13.

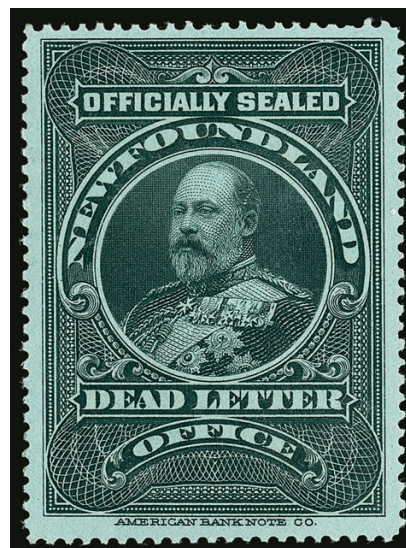
With 1995 Greene Foundation certificate. Scott \$9,000.00. SG £6,000. Unitrade C\$12,000.00..... E. 4,000-5,000



754



755



756

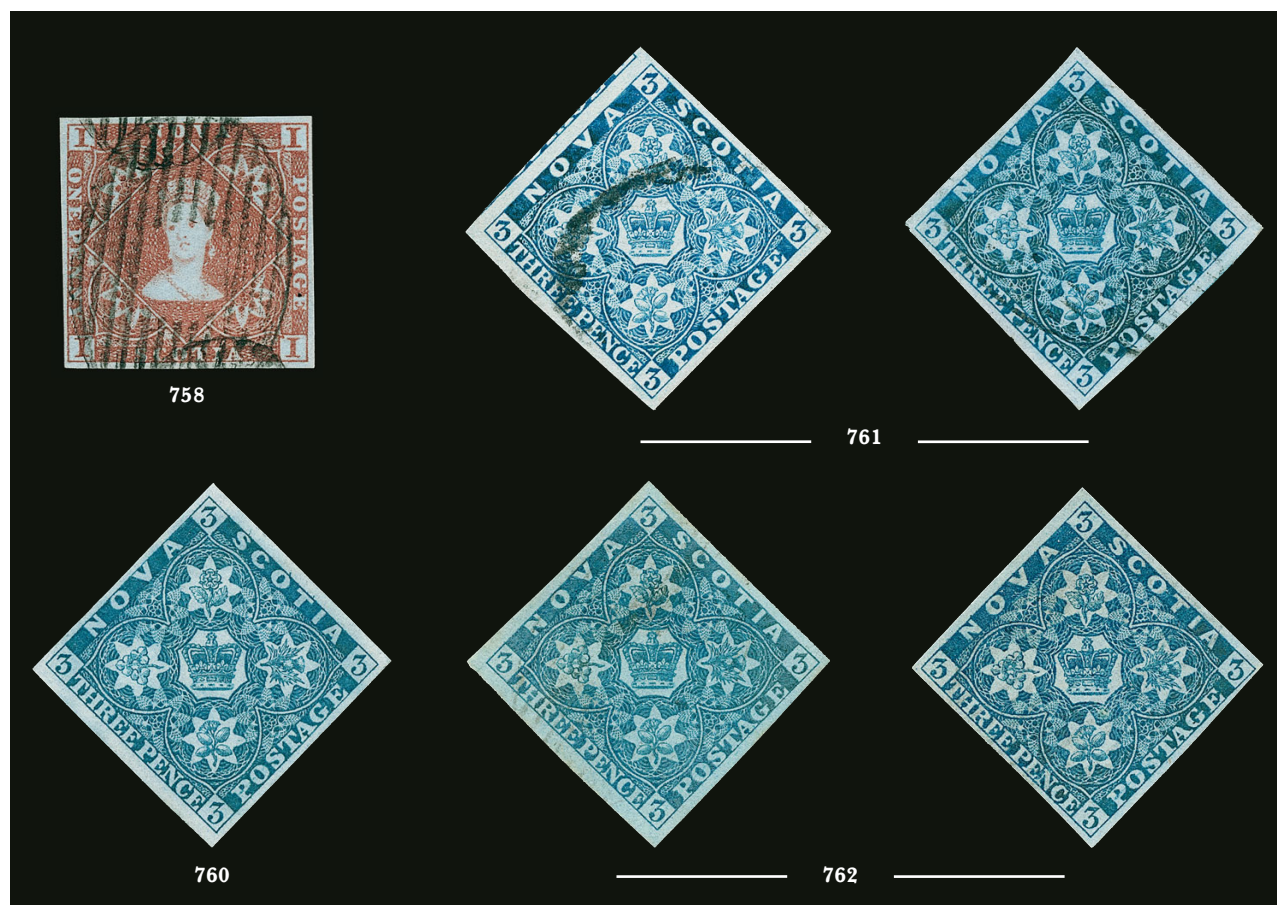
- 754 ★★ **1932, \$1.50 on \$1.00 Blue, DO-X Air Post (C12; SG 221).** Mint N.H., uncharacteristically precise centering with wide margins, bright and fresh, Extremely Fine Gem, a superb example which is surprisingly challenging in this quality, with 2011 P.F. certificate (XF-Superb 95 XQ), Scott \$350.00, SG £250 (as hinged), Unitrade C\$800.00..... E. 300-400
- 755 ★★ **1933, \$4.50 Balbo Air Post (C18; SG 235).** Mint N.H., particularly well-centered, bright color with an intense impression, Extremely Fine, with 2007 P.F. certificate, Scott \$450.00, SG £275 (as hinged), Unitrade C\$900.00..... E. 300-400
- 756 ★ **1905, Black on Blue, Post Office Seal (OX1).** Original gum, very lightly hinged, truly precise centering with wide margins, intense impression on strongly blued paper, Extremely Fine Gem, a superb example of this scarce stamp, with 2018 Greene Foundation certificate, Scott \$750.00, Unitrade C\$1,000.00 E. 500-750

NOVA SCOTIA



757

- 757 ★ **1853, 1p Red Brown (1; SG 1).** Original gum, h.r., mostly large to full margins all around, deep rich color, intense impression on fresh blued paper
- EXTREMELY FINE GEM. A STUNNING ORIGINAL-GUM EXAMPLE OF THE 1853 ONE-PENNY RED BROWN, SCOTT NO. 1. RARELY ENCOUNTERED SO CHOICE.
- Ex Caspary. With 2008 P.F. certificate. Scott \$2,500.00. SG £3,000. Unitrade C\$6,000.00 E. 2,000-3,000



758 **1853, 1p Red Brown (1; SG 1).** Large to full margins, deep rich color, neat barred oval cancels, Very Fine and choice, with 1979 Greene Foundation certificate, Scott \$500.00, SG £475, Unitrade C\$700.00..... E. 200-300

759 ★ **1857, 3p Pale Blue (2b; SG 4).** Original gum, lightly hinged, impressively large and balanced margins, wonderfully strong color, amazing proof-like impression on fresh paper

EXTREMELY FINE. A GEM ORIGINAL-GUM EXAMPLE OF THE 1857 3-PENCE IN PALE BLUE SHADE. RARE IN THIS SUPERB CONDITION.

Ex "Fordwater". With photocopy of 2003 Brandon (as pair from which this originates) and 2013 P.F. certificates. Scott \$1,750.00. SG £1,000. Unitrade C\$3,200.00 E. 1,500-2,000



759

760 ★ **1851, 3p Dark Blue (3; SG 2).** Large part original gum, exceptionally large margins all around, strong rich color and intense impression on fresh paper, Extremely Fine, a handsome example in superb condition, ex Chapin and Gross, with 2009 P.F. certificate, Scott \$2,250.00, SG £1,300, Unitrade C\$4,400.00..... E. 1,000-1,500

761 **1851, 3p Bright Blue, 3p Dark Blue (2-3; SG 2-3).** Each with large margins, No. 2 particularly huge with part of adjoining stamp on one side, wonderfully fresh colors, Extremely Fine pair, No. 2 with 1991 Greene Foundation and No. 3 with 1995 P.S.E. certificate, Scott \$525.00, SG £320, Unitrade C\$700.00..... E. 300-400

762 **1851, 3p Bright Blue, 3p Dark Blue (2-3; SG 2-3).** Large balanced margins, fresh colors, Very Fine and choice, No. 2 with 1996 P.S.E. and No. 3 with 2001 Greene Foundation certificate, Scott \$525.00, SG £320, Unitrade C\$700.00 E. 200-300



763

- 763 ★ **1851, 6p Yellow Green (4; SG 5).** Original gum, relatively lightly hinged, uncharacteristically large margins all around, exceptional color with a razor-sharp impression on fresh paper

EXTREMELY FINE GEM. AN ABSOLUTELY SUPERB ORIGINAL-GUM EXAMPLE OF THE 1851 6-PENCE YELLOW GREEN. EXTRAORDINARILY RARE IN THIS STUNNING QUALITY.

Most examples we have encountered have part or traces of original gum, or no gum at all. Finding one with full original gum in this high level of quality is notably rare.

With 1986 R.P.S. and 2009 Sismondo certificates. Scott \$5,500.00. SG £4,750. Unitrade C\$15,000.00..... E. 4,000-5,000



764

- 764 **1851, 6p Yellow Green (4; SG 5).** Mostly large margins to clear at bottom, lovely fresh color, lightly struck oval grid cancel, Very Fine, with 2007 Greene Foundation certificate, Scott \$825.00, SG £550, Unitrade C\$1,200.00 E. 300-400



765

- 765 (★) **1857, 6p Dark Green (5; SG 6).** Unused (no gum), large to ample margins all around, luxurious deep color in this distinctive shade, highly detailed impression on fresh paper, certificate notes a “tiny black mark in “G” of Postage” which is absolutely trivial and only seen under high magnification

VERY FINE. THE 1857 6-PENCE DARK GREEN IS ONE OF THE RAREST STAMPS TO FIND IN UNUSED CONDITION WITH VERY FEW THOUGHT TO EXIST, ESPECIALLY IN CHOICE CONDITION.

Ex “Cornwallis” and Mayer. With 1974 Robson Lowe (not noting mark) and 2007 Greene Foundation certificates. Scott \$10,000.00. SG £10,000. Unitrade C\$12,500.00..... E. 3,000-4,000



766

- 766 **1857, 6p Dark Green (5; SG 6).** Exceptionally large and balanced margins, deep rich color in this distinctive shade, uncommonly light oval grid cancel

EXTREMELY FINE GEM. A PRISTINE AND SUPERB EXAMPLE OF THE 6-PENCE DARK GREEN. RARELY SEEN THIS CHOICE.

With 1992 and 2007 P.F. certificates. Scott \$2,250.00. SG £1,000. Unitrade C\$3,000.00... E. 2,000-3,000

1857 ONE-SHILLING REDDISH VIOLET

THE FINEST QUALITY ORIGINAL-GUM EXAMPLE IN EXISTENCE
AN INCREDIBLE CONDITION RARITY



767

767 ★ **1857, 1sh Deep Purple (6b; SG 7c).** Part original gum, magnificent large balanced margins, stunning color with a proof-like impression on fresh paper

EXTREMELY FINE GEM. THIS IS, WITHOUT QUESTION, THE FINEST ONE-SHILLING DEEP PURPLE WITH ANY ORIGINAL GUM IN EXISTENCE. ONE OF THE HIGHLIGHTS OF THE SCARSDALE COLLECTION BOASTING AN EXCEPTIONAL IMPRESSION, LARGE MARGINS AND AN OVERALL FRESHNESS RARELY ENCOUNTERED ON THESE EARLY NOVA SCOTIA STAMPS.

Ex Ferrary and Burrus. With 1962 A. Diena and 2006 Sismondo certificates. Scott \$25,000.00. SG £18,000. Unitrade C\$65,000.00 E. 20,000-30,000

768

1857, 1sh Reddish Purple (6; SG 8). Large to full margins all around, especially rich color on bright paper, light oval grid cancel

EXTREMELY FINE. A LOVELY USED EXAMPLE OF THE 1857 ONE-SHILLING REDDISH PURPLE. TRULY RARE SCARCE IN SUCH EXCEPTIONAL CONDITION.

Ex Ferrary. With 1994 Brandon and 2007 P.F. certificates. Scott \$5,000.00. SG £3,500. Unitrade C\$7,000.00 E. 2,000-3,000



768



769

769 (★) **1851, 1sh Cold Violet (7; SG 7).** Unused (no gum), full margins all around, luxurious color in this distinctive true shade, uncommonly sharp impression on bright paper

EXTREMELY FINE GEM EXAMPLE OF THE ICONIC 1851 ONE-SHILLING COLD VIOLET. THIS IS EASILY ONE OF THE FINEST UNUSED EXAMPLES IN EXISTENCE, OF WHICH LESS THAN A DOZEN ARE THOUGHT TO EXIST. A MAJOR RARITY IN TRUE GEM QUALITY.

Ex Moody, Lilly, Kanai, and Cole. With 1968 R.P.S., 1988 Greene Foundation and 2011 P.F. certificates. Scott \$25,000.00. SG £25,000. Unitrade C\$35,000.00 .. E. 10,000-15,000



770

- 770 **1851, 1sh Cold Violet (7; SG 7).** Huge to large margins on all four sides, exceptionally fresh color in this distinctive Cold Violet shade, razor-sharp impression
EXTREMELY FINE. A SUPERB USED EXAMPLE OF THE 1851 ONE-SHILLING COLD VIOLET, SCOTT NO. 7. EXTRAORDINARILY RARE IN THIS CHOICE CONDITION.
With 1949 R.P.S. and 2008 P.F. certificates. Scott \$6,000.00. SG £5,500. Unitrade C\$9,000.00 E. 4,000-5,000



771EX



772

- 771 **1860-63, 1c-12½c Pictorial Cents Issue (8-13; SG 9/29).** 1c and 8½c on White Paper, each individually chosen, mostly at public auction, for their exceptional centering, the 1c a superb Jumbo, 12½c with strong vertical plate guideline at left, uncommonly fresh colors, Extremely Fine, a Gem quality set of this popular issue, 1c with 2003 A.P.S., 2c with 1998 P.S.E. and 2007 P.F., 8½c with 1997 P.S.E. and 2007 P.F., 10c with 1998 P.S.E. and 2007 P.F., and 12½c with 2004 Greene Foundation certificates, Scott \$103.50, Unitrade C\$135.00(Photo Ex/Website PDF) E. 500-750

PRINCE EDWARD ISLAND

- 772 ★ **1861, 2p Dull Rose (1; SG 1).** Original gum, h.r., deep rich shade, fresh and Fine, with 2016 P.F. certificate, Scott \$1,100.00, SG £500, Unitrade C\$700.00 E. 300-400

- 773 ★ **1861, 3p Blue (2; SG 3).** Original gum, lightly hinged, truly spectacular centering for this historically difficult stamp with uncommonly wide margins, bold shade on bright white paper

EXTREMELY FINE GEM. A SUPERB ORIGINAL-GUM EXAMPLE OF THE 1861 3-PENCE BLUE FIRST ISSUE OF PRINCE EDWARD ISLAND. A RARITY IN THIS PRISTINE CONDITION.

Ex Dr. Dauer. With 1992 Greene Foundation and 2014 P.F. certificates. Scott \$2,250.00. SG £1,100. Unitrade C\$4,000.00 E. 2,000-3,000



773



774

- 774 ★ **1861, 6p Yellow Green (3; SG 4).** Original gum, h.r., impressively well-centered for this notoriously off-centered issue, with wonderfully wide margins, bright shade and sharp impression

EXTREMELY FINE ORIGINAL-GUM EXAMPLE OF THE 1861 6-PENCE YELLOW GREEN FIRST ISSUE. RARELY ENCOUNTERED THIS CHOICE.

Ex "Crossings" and Dr. Dauer. With 1996 Greene Foundation and 2014 P.F. certificates. Scott \$2,750.00. SG £1,700. Unitrade C\$5,500.00 E. 2,000-3,000



775



776



777

- 775 ★★ **1862, 9p Mauve (8; SG 19).** Mint N.H. top right corner sheet selvage single, excellent centering, bold color and intense impression, Extremely Fine, with 2011 P.F. certificate, Scott \$140.00, SG £120, Unitrade C\$300.00 E. 150-200

- 776 ★★ **1870, 4 1/2p Brown (10; SG 32).** Mint N.H., near perfect centering, incredibly fresh color, razor-sharp impression on bright paper, Extremely Fine Gem, a beautiful example in superb condition, with 2013 P.F. certificate, Scott \$200.00, SG £75, Unitrade C\$300.00 .. E. 200-300

- 777 **1870, 4 1/2p Brown (10; SG 32).** Stunning centering, rich color on bright white paper, very lightly cancelled, Extremely Fine Gem, a surprisingly rare stamp in this superb quality, it would be challenging to find a superior example, ex Boulders, with 2000 and 2007 P.F. certificates, Scott \$75.00, SG £85, Unitrade C\$100.00 E. 200-300



778

- 778 ★★ **1872, 3c Rose, Perf 12½-13, Dot Between “Prince Edward” (Unitrade 13diii).** Mint N.H., well-centered with uncommon Jumbo margins, deep rich shade, Very Fine, a choice example of this scarce variety, with 2007 Sismondo certificate (VF 80), Unitrade C\$160.00..... E. 200-300

- 779 **1872, 12c Violet (16; SG 42).** Excellent centering with absolutely Jumbo margins, rich color on brilliant white paper, very lightly cancelled, Extremely Fine Gem, in far superior condition to most, ex Boulders, with 1996 P.S.E. and 2007 P.F. certificates, Scott \$30.00, SG £85, Unitrade C\$40.00 E. 150-200



779

SCARSDALE UNUSED AND USED BALANCES OF CANADIAN PROVINCES

- 780 ★★ **The Scarsdale Unused Balance of Canadian Provinces.** Neatly mounted on Scott pages, majority of value focused around Newfoundland, few earlier better items but mostly centered around the late 19th and 20th century with key 1920s-30s sets, spot check shows nearly all is Mint N.H., Back-of-Book with Air Posts and Postage Dues, little Nova Scotia and Prince Edward Island, thirteen certificates accompany, the Scott value exceeds \$5,800.00, Very Fine-Extremely Fine, a beautiful and highly desirable collection balance, the collector had an especially sharp eye for pristine quality with a focus on freshness and precise centering, often buying even low value stamps individually to create a magnificent set.....(Website PDF) E. 2,000-3,000
- 781 **The Scarsdale Used Balance of Canadian Provinces.** Neatly mounted on Scott album pages, most of the value in Newfoundland with strong focus on late 19th and 20th century sets Air Posts incl. Nos. C3 and C12, plus Postage Dues, other Provinces with few scattered better items, twelve certificates accompany, the Scott value exceeds \$4,600.00, Very Fine-Extremely Fine, a solid used balance which would be ideal from which to build upon as many of these examples were specifically chosen for their Gem quality with attention even focused on low-value stamps(Website PDF) E. 1,500-2,000

END OF SALE — THANK YOU



BIDS

Use this form to submit absentee bids
or to confirm telephone bids

Sale 1243

October 20, 2021

PADDLE #

1

Please provide the following information:

NAME

ADDRESS

CITY/STATE/ZIP

PHONE MOBILE

EMAIL

2

Have you purchased from us in the past 5 years? ☐ Yes (please go to Section 3)
☐ No (references required below)

STAMP FIRM PHONE

STAMP FIRM PHONE

Please submit references at least **2 business days** before the sale. Bids from new clients will not be executed if satisfactory references are not received in time to be contacted.

3

- Enter the lot number and your corresponding maximum bid in the space below
- Use whole dollar amounts and bid according to the increments (see back of form)
- Bids do not include the **18% Buyer's Premium**, taxes, duty or shipping charges
- Absentee bids will advance at one increment over the next highest competing bid
- "Plus", "Break Tie" or "Buy" bids will not be executed
- Indicate any "Or" bids between lot number/bid entries and bracket your choices
- If you wish to limit the total amount of your bids, follow the instructions below

Lot #	Bid \$	Lot #	Bid \$	Lot #	Bid \$

☐ **Limit Bids:** Check this box if you wish to limit the total hammer price of your bids (excluding 18% Buyer's Premium, taxes, duty and shipping costs). Your bids will be executed until your bidding limit has been reached. The total amount you wish to bid is \$

4

By signing this form, you agree to all of the Conditions of Sale printed in the sale catalogue (printed and digital), including but not limited to a) payment in the manner demanded by the Siegel firm, and b) payment of the 18% Buyer's Premium, any sales tax or customs duty, shipping costs, late charges and

other prescribed charges. You agree that your bids will be executed as a courtesy by Siegel, but you waive the right to make any claim against Siegel or its employees arising from these bids or your participation in the sale. You agree to honor all bids as submitted, regardless of any errors or omissions.

SIGNED DATE

Mail the signed form to Siegel Bid Department, 6 West 48th St., 9th Floor, New York, NY 10036
or email to stamps@siegelauctions.com

Additional Bids

Sale 1243

October 20, 2021

PADDLE #

Lot #	Bid \$	Lot #	Bid \$	Lot #	Bid \$

Shipping & Insurance

We will be pleased to arrange for shipping and transit insurance for purchases in this sale, except for lots marked or announced as "floor sale only." To expedite billing and delivery to hundreds of buyers in each sale, we use standard charges for postage and insurance under our policy. These charges are based on the package weight and mailing requirements, according to the schedule shown here. Our standard charges do not include a fee for our services, and they may be slightly more or less than the actual postage or Fedex fee. We ask all buyers to remit the invoiced amount for shipping and insurance.

Transit insurance is provided in all cases, except when the buyer has furnished us with documentation that insurance is effective under the buyer's own policy.

There will be no added insurance charge for shipments of less than \$75,000 value. Shipments valued in excess of \$75,000 may require supplemental insurance and/or special courier service, the estimated cost of which will be furnished to the buyer prior to shipment. If the buyer refuses to pay the estimated charges or furnish proof of self-insured coverage, the buyer will be responsible for picking up the lots at our office and any resulting sales tax.

Bidding Increments

The auctioneer may regulate the bidding at his discretion. However, to assist absentee bidders in establishing their maximum bids, the increments shown here will be used in most cases. We recommend that written bids conform to these increments—bids that do not will be reduced accordingly.

Standard Shipping Charges

Weight Class	Shipping Method	Charge
Up to 2 lbs.	Fedex Envelope	\$25
Over 2 lbs.	Fedex Box	\$35 - \$50*
Outside US	Fedex	\$50 - \$100**
Bulky Lots	Fedex Ground or Express	By weight
Value under \$500	Priority Mail Env	\$10.00
hammer	Priority Mail Box	\$25 - \$35

* Up to \$75,000 value and up to 5 lbs; additional charge may apply to packages exceeding limits

** Buyers outside United States are liable for any applicable customs duty and clearance charges. An accurate declaration of contents and value will be made on all packages and import/export documents. **Siegel may refuse to ship lots to certain countries with a high risk factor.**

2/2021

Bid	Increment	Bid	Increment
Up to \$200	\$10	\$20,000-30,000	\$1,000
\$200-500	\$25	\$30,000-70,000	\$2,500
\$500-1,000	\$50	\$70,000-140,000	\$5,000
\$1,000-3,000	\$100	\$140,000-500,000	\$10,000
\$3,000-7,000	\$250	\$500,000-\$1m	\$25,000
\$7,000-20,000	\$500	Above \$1m	Discretionary