



THE HOPE COLLECTION

UNITED STATES NEWSPAPERS & PERIODICALS ISSUES

OFFERED ON BEHALF OF THE COLLECTOR AT UNRESERVED AUCTION

SALE 1249

TUESDAY, MARCH 1, 2022, AT 10:30 A.M. (LOTS 1-141)

Attendance is now permitted for fully vaccinated individuals and for unvaccinated individuals who follow all guidelines to prevent the spread of COVID-19



All lots sold subject to **18% buyer's premium** and applicable sales tax or customs duty

Please carefully read the **Conditions of Sale** before bidding

Presale viewing by appointment only, subject to COVID-19 rules

Robert A. Siegel

AUCTION GALLERIES, INC.

6 WEST 48TH STREET, 9TH FLOOR, NEW YORK, N.Y. 10036

Phone (212) 753-6421 • Email: stamps@siegelauctions.com

Catalogues, internet bidding, resources, archives and the Siegel Encyclopedia at
siegelauctions.com



Robert A. Siegel

AUCTION GALLERIES, INC.

6 WEST 48TH STREET, 9TH FLOOR, NEW YORK, N.Y. 10036

Phone (212) 753-6421 • Email: stamps@siegelauctions.com

siegelauctions.com



Scott R. Trepel
President
strepel@siegelauctions.com



John P. Zuckerman
Senior Vice President
jzuckerman@siegelauctions.com



Corey Long
Senior Vice President
clong@siegelauctions.com

Siegel International
Dallas (214) 754-5991



Charles F. Shreve
Director, Siegel International
charles@siegelauctions.com



Samantha Aragon
VP, Financial
samantha@siegelauctions.com



Gina Cashia
VP, Operations
gina@siegelauctions.com



Andrea Moreno
Operations
andrea@siegelauctions.com



Andrew Titley
VP, Siegel International
andrew@siegelauctions.com



Chris Anderson
International Specialist
chris@siegelauctions.com

Scott R. Trepel Principal Auctioneer (licensed by NYC Dept. of Consumer Affairs, #795952)

Information for Bidders

Bidding

The following means are available for placing bids:

- 1) **Public Attendance:** Attendance is now permitted for fully vaccinated individuals and for unvaccinated individuals who follow all guidelines to prevent the spread of COVID-19. Live bidding will also be facilitated by mail, email, phone or internet.
- 2) **Live Internet Bidding:** Instructions for participating as a Live Internet Bidder are provided on the page opposite.
- 3) **Phone Bidding:** Bidders can be connected to the sale by phone and bid through a member of staff. Requests for phone bidding are subject to approval (please contact our office at least 24 hours before the sale). A signed Bid Form is required.
- 4) **Absentee Bids:** All bids received in advance of the sale, either by mail, fax, phone, email or internet, are Absentee Bids, which instruct the auctioneer to bid up to a specific amount on one or more lots in the sale. Absentee Bids sent by phone, fax or email should arrive at least one hour prior to the start of the sale session. Bids entered through Live Internet Bidding will be visible to the auctioneer during the sale. Written bids should be entered legibly on the Bid Form in the sale catalogue. Email and internet bids should be carefully typed and double-checked. All new bidders must provide references.

Presale Viewing by Appointment Only

To prevent the spread of COVID-19, presale viewing will be permitted for fully vaccinated individuals or for unvaccinated individuals who agree to follow all protective measures. To make an appointment and receive instructions, please contact us at (212) 753-6421 or by email. We reserve the right to refuse, cancel or postpone a request or appointment.

Expert Certification

Individual items offered without a PF or PSE certificate dated within the past 5 years may be purchased subject to certification of genuineness and our description. **Please refer to the Conditions of Sale and Grading Terms for policies governing certification.**

Shipping and Delivery

Procedures and charges for shipping lots are printed on the back of the Bid Form. **Bidders are responsible for all prescribed shipping charges and any applicable sales tax or customs duties.**

Price Realized

Prices realized are sent with each invoice. Bidders with email will receive a Bid Results report after the sale. Session results are posted immediately to siegelauctions.com

Live and Absentee Internet Bidding at Siegel

**ALL INTERNET BIDDING IS NOW HANDLED DIRECTLY FROM THE SIEGEL WEBSITE
SALES ARE NO LONGER LISTED ON STAMP AUCTION NETWORK**

**REGISTERED BIDDERS MAY LEAVE BIDS IN ADVANCE OF THE SALE
AND BID LIVE DURING THE AUCTION**

DOWNLOAD THE SIEGEL APP FROM THE APPLE OR GOOGLE PLAY STORES

This step-by-step guide will instruct you how to register and use the bidding interface.

Start by following the simple steps to become a registered internet bidder.

Once you have been approved for bidding, you can leave bids in advance of the sale, listen to the auction and place bids live with the click of a mouse.

Registering with Siegel Auction Galleries

To bid, you must be registered and approved by Siegel.

To decide what you need to do, choose the description below that best fits you.



**I've already registered with Siegel and
have been approved by Siegel for internet bidding**

Internet bidding works by allowing registered bidders to observe and place bids, either before the sale or in real-time during the auction.

Live Internet Bidding will work with any browser on both PC and Mac operating systems, or with our app..

Before bidding by internet for the first time, we recommend observing an auction in progress. This will help you develop a feel for the sale tempo and bidding interface.

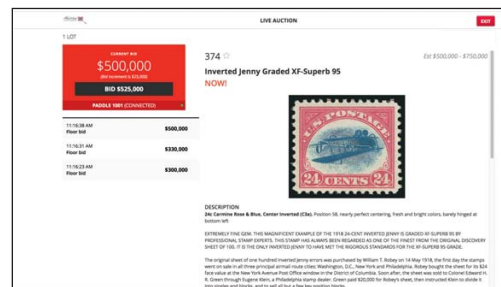
I'm a Siegel client, but I'm not registered to bid live

Go to bid.siegelauctions.com and click on **Login** at the top. Then click on the link for **Sign Up Now**. We will match your new signup to your existing account.

Log in and participate in the auction at bid.siegelauctions.com

When you're logged on as an internet bidder, the bidding interface shows a photo and description of the lot, the current bid (and your bidding status), options for placing competitive bids and buttons with bid increments.

- After you click on a bid amount, the auctioneer is immediately notified of your bid.
- Retracting a bid is not acceptable, so please bid carefully.
- You can track prior realizations from the bidding screen.



I want to become a Siegel client and bid in auctions

Go to bid.siegelauctions.com and click on **Login** at the top. Then click on the link for **Sign Up Now**. You will need to register and provide trade and banking references.

"System Down" or "Lost Connection" events do occasionally happen.

If you have any problems with Live Internet Bidding please call 212-753-6421 for immediate assistance.

Conditions of Sale (please read carefully before bidding)

THE PROPERTY IN THIS CATALOGUE WILL BE OFFERED AT PUBLIC AUCTION BY ROBERT A. SIEGEL AUCTION GALLERIES, INC. ("GALLERIES") ON BEHALF OF VARIOUS CONSIGNORS AND ITSELF OR AFFILIATED COMPANIES. BY BIDDING ON ANY LOT, WHETHER DIRECTLY OR THROUGH A THIRD PARTY, IN PERSON, BY TELEPHONE, FACSIMILE, INTERNET OR BY ANY OTHER MEANS, THE BIDDER ACKNOWLEDGES AND AGREES TO ALL OF THE FOLLOWING CONDITIONS OF SALE.

1. The highest bidder acknowledged by the auctioneer shall be the buyer. The term "final bid" means the last bid acknowledged by the auctioneer, which is normally the highest bid offered. **The purchase price payable by the buyer will be the sum of the final bid and a commission of 18% of the final bid ("buyer's premium"), together with any sales tax, use tax or customs duties due on the sale.**

2. The auctioneer has the right to reject any bid, to advance the bidding at his discretion and, in the event of a dispute, to determine the successful bidder, to continue the bidding or to reoffer and resell the lot in dispute. The Galleries' record of the final sale shall be conclusive.

3. All bids are per numbered lot in the catalogue unless otherwise announced by the auctioneer at the time of sale. The right is reserved to group two or more lots, to withdraw any lot or lots from the sale, or to act on behalf of the seller. The Galleries will execute bidding instructions on behalf of clients, but will not be responsible for the failure to execute such bids or for any errors in the execution of such bids.

4. **Lots with numbers followed by the symbol ° are offered subject to a confidential minimum bid ("reserve"), below which the lot will not be sold. The absence of the symbol ° means that the lot is offered without a reserve. If there is no reserve, the auctioneer has sole discretion to establish a minimum opening bid and may refuse an offer of less than half of the published estimate. Any lot that does not reach its reserve or opening bid requested by the auctioneer will be announced as "passed" and excluded from the prices realized lists after the sale. The Galleries may have a direct or indirect ownership interest in any or all lots in the sale resulting from an advance of monies or goods-in-trade or a guarantee of minimum net proceeds made by the Galleries to the seller.**

5. Subject to the exclusions listed in 5(A), the Galleries will accept the return of lots which, subject to the Galleries' sole judgment, have been misidentified or which have obvious faults that were present when the lot was in the Galleries' custody, but not so noted in the lot description. **All disputed lots must be received by the Galleries intact with the original packing material within 5 days of delivery to the buyer but no later than 30 days from the sale date. (5A) EXCLUSIONS:** The following lots may not be returned for any reason, or may not be returned for the reasons stated: (i) lots containing 5 or more items; (ii) lots from buyers who registered for the pre-sale exhibition or received lots by postal viewing, thereby having had the opportunity to inspect them before the sale; (iii) any lot described with "faults," "defects" or a specific fault may not be returned because of any secondary fault; (iv) photographed lots may not be returned because of centering, margins, short/nibbed perforations or other factors shown in the photos; (v) the color of the item does not match the color photo in the sale catalogue or website listing; (vi) the description contains inaccurate information about the quantity known or reported; or (vii) a certification service grades a stamp lower than the grade stated in the description or on an accompanying certificate.

6. Successful bidders, unless they have established credit with the Galleries prior to the sale, must make full payment in cleared funds before the lots will be delivered. Buyers not known to the Galleries must make payment in full within 3 days from the date of sale. **The Galleries retains the right to demand a cash deposit from anyone prior to bidder registration and/or to demand payment at the time the lot is knocked down, for any reason whatsoever.** In the event that any buyer refuses or fails to make payment in cash for any lot at the time it is knocked down to him, the auctioneer reserves the right to reoffer the lot immediately for sale to the highest bidder. **Credit cards (Visa, Mastercard and Discover only) can be accepted as payment, but will be subject to a 3% non-refundable Convenience Fee, which will be added to the total of the entire invoice (including hammer price, buyer's premium, shipping and transit insurance charges and any applicable taxes). The buyer waives the right to dispute all credit card charges.**

7. If the purchase price has not been paid within the time limit specified above, nor lots taken up within 7 days from the date of sale, the lots may be resold by whatever means deemed appropriate by the Galleries, and any loss incurred from resale will be charged to the defaulting buyer, and/or the Galleries may seek any other remedy prescribed by law to enforce payment. **Any account more than 30 days in arrears will be subject to a late payment charge of 1½% per month as long as the account remains in arrears. Any expenses incurred in securing payment from delinquent accounts will be charged to the defaulter.** A fee of \$250.00 will be charged for a check returned for insufficient funds.

8. All lots are sold as genuine. **Any lot accompanied by a certificate issued by The Philatelic Foundation or by Professional Stamp Experts within 5 years of the sale date is sold "as is" and in accordance with the description on the certificate. Such lots may not be returned for any reason, including but not limited to a contrary certificate of opinion or change in grade.** Buyers may request a certificate for a lot containing not more than one item, which does not have a P.F. or P.S.E. certificate (dated as above), provided that the following conditions are met: (i) the purchase price must be paid in full, (ii) if submitted by the buyer, the lot must be submitted to an acceptable expertizing service with a properly executed application form within 21 days of the sale, (iii) a copy of the application form must be given to the Galleries, (iv) the Galleries retains the right to resubmit the item for reconsideration, without time limit or other restrictions, for the purpose of obtaining a satisfactory opinion, (v) lots submitted for certification will be considered cleared 90 days from the date of sale, whether or not a certificate has been issued, unless the Galleries issues written approval of a further extension of return privileges, and (vi) in the event the lot is determined to be misidentified or misdescribed, pursuant to 5 and 5(A) of these Conditions, the Galleries will issue a refund to the buyer for the full purchase price and actual certification fees, but the reimbursement for certificate fees (and related costs) shall not exceed 10% of the hammer price of the lot. **Changes to a grade by the same certification service or a different grade from another certification service are not grounds for returning a lot.**

9. Until paid for in full, all lots remain the property of the Galleries on behalf of the seller.

10. Agents executing bids on behalf of clients may also be held responsible for all purchases made on behalf of clients, unless otherwise arranged prior to the sale.

11. **The buyer assumes all risk for delivery of purchased lots and agrees to pay for prescribed shipping costs. Buyers who receive lots in the U.S. are obligated to pay whatever sales tax or compensating use tax might be due, at any time, and buyers outside the U.S. are responsible for all customs duties.**

12. **The bidder consents that any action or proceeding against it may be commenced and maintained in any court within the State of New York or in the United States District Court for the Southern District of New York, that the courts of the State of New York and United States District Court for the Southern District of New York shall have jurisdiction with respect to the subject matter hereof and the person of the bidder. The bidder agrees not to assert any defense to any action or proceeding initiated by Galleries based upon improper venue or inconvenient forum. The bidder agrees that any action brought by the bidder shall be commenced and maintained only in a Federal Court in the United States District Court for the Southern District of New York or the State Court in the county in which Galleries has its principal place of business in New York. The bidder agrees not to use a public conflict resolution service and not to use any form of social media to publish comments or information about the Galleries and its employees which might harm the Galleries' reputation or business. These Conditions of Sale shall be governed by and construed in accordance with the substantive laws of the State of New York, and shall constitute an agreement that shall be binding on the parties, and their respective heirs, administrators, distributees, successors and assignees.**

SCOTT R. TREPEL, Principal Auctioneer (NYC License No. 795952)
N.Y.C. Department of Consumer Affairs
80 Lafayette Street, New York, N.Y. 10013
Telephone (212) 577-0111

Revised 9/2018

Grades, Abbreviations and Values Used in Descriptions

Grades and Centering

Our descriptions contain detailed information and observations about each item's condition. We have also assigned grades to stamps and covers, which reflect our subjective assessment. For stamps, the margin width, centering and gum are described and graded according to generally-accepted standards (an approximate correlation to numeric grades is provided at right). Although we believe our grades are accurate, they are not always exactly aligned with third-party grading terms or standards for all issues. **A lot may not be returned because a certification service grades a stamp lower than the grade stated in the description. Information from the P.S.E. Stamp Market Quarterly and P.S.E. Population ReportSM is the most current available, but lots may not be returned due to errors or changes in statistics or data.**

Extremely Fine Gem (90-100): The term "Gem" describes condition that is the finest possible for the issue. This term is equivalent to "Superb" used by grading services.

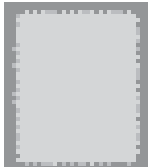
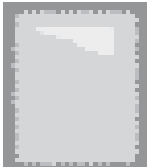
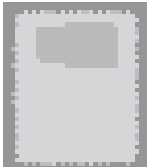
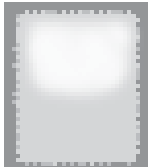
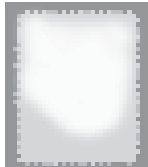
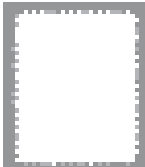
Extremely Fine (80-90): Exceptionally large/wide margins or near perfect centering.

Very Fine (70-85): Normal-size margins for the issue and well-centered with the design a bit closer to one side. "Very Fine and choice" applies to stamps that have desirable traits such as rich color, sharp impression, freshness or clarity of cancel.

Fine (60-70): Smaller than usual margins or noticeably off center. Pre-1890 issues may have the design touched in places.

Very Good (below 60): Attractive appearance, but margins or perforations cut into the design.

Guide to Gum Condition

Gum Categories:	MINT N.H.	ORIGINAL GUM (O.G.)				NO GUM
	 Mint Never Hinged <i>Free from any disturbance</i>	 Lightly Hinged <i>Faint impression of a removed hinge over a small area</i>	 Hinge Mark or Remnant <i>Prominent hinged spot with part or all of the hinge remaining</i>	 Part o.g. <i>Approximately half or more of the gum intact</i>	 Small part o.g. <i>Approximately less than half of the gum intact</i>	 No gum <i>Only if issued with gum</i>
Catalogue Symbol:	★ ★	★	★	★	★	(★)
PRE-1890 ISSUES	<i>Pre-1890 stamps in these categories trade at a premium over Scott value</i>			Scott Value for “O.G.”		Scott “No Gum” Values thru No. 218
1890-1935 ISSUES	Scott “Never Hinged” Values for Nos. 219-771	Scott Value for “O.G.” (Actual value will be affected by the degree of hinging)		Disturbed Original Gum: Gum showing noticeable effects of humidity, climate or hinging over more than half of the gum. The significance of gum disturbance in valuing a stamp in any of the Original Gum categories depends on the degree of disturbance, the rarity and normal gum condition of the issue and other variables affecting quality. For example, stamps issued in tropical climates are expected to have some		
1935 TO DATE	Scott Value for “Unused”					

Covers

Minor nicks, short edge tears, flap tears and slight reduction at one side are normal conditions for 19th century envelopes. Folded letters should be expected to have at least one file fold. Light cleaning of covers and small mends along the edges are accepted forms of conservation. Unusual covers may have a common stamp with a slight crease or tiny tear. **These flaws exist in virtually all 19th century covers and are not always described. They are not grounds for return.**

Catalogue Values and Estimates

Unless otherwise noted, the currently available *Scott Catalogue* values are quoted in dollars with a decimal point. Other catalogues are often used for foreign countries or specialized areas and are referred to by their common name: *Stanley Gibbons* (SG), *Dietz*, *American Air Mail Catalogue* (AAMC), *Michel*, *Zumstein*, *Facit*, etc. Estimates are indicated with an "E." and reflect our conservative valuation in dollars. Reserves will never exceed the low end of the estimate range; they will sometimes exceed Scott Catalogue value for stamps in Extremely Fine condition.

Because of certain pricing inconsistencies in the *Scott Catalogue*—for example, blocks that have no gum, the absence of premiums for Mint N.H. items, etc.—we cannot guarantee the accuracy of values quoted for multiples, specialized items and collection lots. We generally try to be conservative, but buyers may not return a lot because of a discrepancy in catalogue value due to Scott pricing inconsistencies.

Symbols and Abbreviations (see chart above for gum symbols)

⊞	Block	E	Essay	pmk.	Postmark	No.	Scott Catalogue Number
⊞	Cover	P	Proof	cds	Circular Datestamp	hs	Handstamp
FC	Fancy Cancel	TC	Trial Color Proof	var.	Variety	ms.	Manuscript

Revised 1/2012



INTRODUCTION

THERE WERE TWO MOTIVATING FACTORS BEHIND THE NEWSPAPERS AND PERIODICALS issues of 1865 and 1875 to 1897. One was the government's desire to compete with private companies that provided local distribution and bulk transportation of newspapers and other publications. The other was a concern that revenues were being lost due to the lack of accountability when post offices collected postage on bulk shipments of newspapers and publications.

The Act of Congress of March 3, 1863, gave the Postmaster General authority to use mail route agents on board trains and steamboats to handle packages of newspapers and periodicals at competitive rates. To increase this part of the Post Office's business, a set of three stamps was created for publishers to use on bundles of papers handed over to post offices or route agents. The 5¢, 10¢ and 25¢ stamps were made large, so that the colors and denominations would be easily visible to mail agents who received large packages with the stamps stuck on top. The 1865 Issue was printed by the National Bank Note Company from typographic plates which embossed the paper and left a solid colored border. The stamps were reprinted by Continental in 1875, using the original National plates. The 25¢ 1865 Newspaper stamp is the first stamp of any kind to depict Abraham Lincoln, predating the 1866 15¢ regular issue, Scott 77.

The use of stamps on newspapers and periodicals was discontinued in November 1869 with no reason given. From 1869 until December 31, 1874, postage on bulk mailings was collected in money. Beginning January 1, 1875, a new set of stamps was distributed to post offices for use in collecting postage on bulk mailings of second-class matter.

The new stamps were not intended to be sold to the public. The regulations specifically stated (in caps) "Under no circumstances whatever are they to be furnished to the public, or sold or loaned to other postmasters." The stamps were a means to hold postmasters accountable for second-class postage collected from publishers. By reconciling stamps received, sold and on hand, the POD Auditor's office could keep tabs on postmasters.

When a publisher paid for a bulk shipment of newspapers or periodicals, he was given a payment receipt. The postal clerk was then required to affix the corresponding denomination of Newspapers and Periodicals stamp to the stub in the post office receipt book and cancel it. When the postmaster filed his returns to the POD Auditor, the receipt book with the cancelled stamps was included.

The 1875 Issue was designed and printed by the Continental Bank Note Company. The designs were a significant departure for the Post Office Department, and are considered by many to be the most extraordinary U.S. postage engravings ever produced. Instead of Founding Fathers or modes of transportation, the Newspaper stamps depicted goddesses and female allegorical figures, including a Native American woman strolling on a forest trail. The irregular and high values, including a \$1.92 denomination, were necessary to show receipt of payments from publishers in increments conforming to bulk postage charges.

The Hope collection of Newspapers and Periodicals issues contains nearly all of the different Scott-listed issues, including the extremely rare 1875 Special Printings and 1894 Unwatermarked Bureau high values. Also included are rare or unique trial color proofs and die essays.

Apart from its completeness, the extraordinary feature of the Hope collection is the uniformly superb quality of the stamps. As anyone may observe by surveying the Siegel firm's auction listings online with Power Search™, these issues are extremely rare in sound, centered condition. The vast majority were perforated with little regard for alignment, and from there the circumstances of handling, even in the hands of collectors, were detrimental. The collector who painstakingly acquired each stamp in this collection, one by one, is to be congratulated on his achievement.

—SCOTT R. TREPEL

MORNING SESSION (LOTS 1-141)
TUESDAY, MARCH 1, 2022, AT 10:30 A.M.

THE HOPE COLLECTION OF UNITED STATES
NEWSPAPERS AND PERIODICALS ISSUES

1865 NATIONAL BANK NOTE COMPANY ISSUE
DIE PROOFS



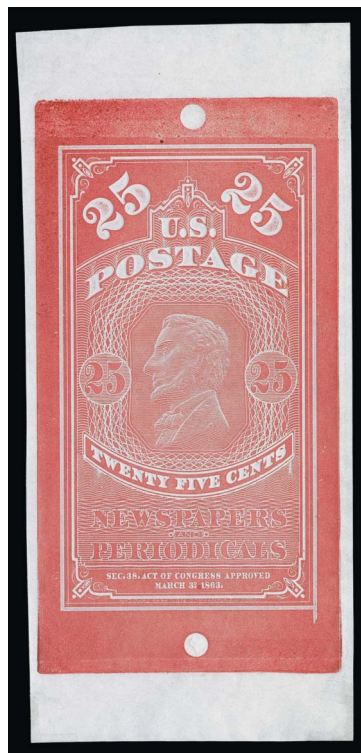
1

- 1 TC **5c 1865 Newspaper Issue, Large Die Trial Color Proofs on Thin Hard Wove (PR1TC1a).** Three, in Deep Reddish Brown, Dark Orange and Green, first 75 x 152mm, other two approximately 65 x 143mm, gorgeous colors, each showing the full-size uncleared die and the die abrasion at top caused by mounting and dismounting the die on the press with screws, fresh in every respect

VERY FINE. EACH OF THESE COLORS FOR THE 1865 5-CENT NEWSPAPER ISSUE TRIAL COLOR PROOFS IS UNIQUE. AN OUTSTANDING TRIO OF PROOFS FROM THE FIRST NEWSPAPER ISSUE.

The Scott Catalogue incorrectly lists these trial color die proofs on India paper, and only in these three colors plus Bright Red (which is priced at 20% the value of the others). The Kotanchik collection contained these three proofs plus three other colors that are not listed in Scott. Each is believed to be unique.

Ex Kotanchik. With 2006 P.F. certificates..... 9,000.00



2

- 2 TC **25c Carmine, 1865 Newspaper Issue, Large Die Trial Color Proof on Thin Hard Wove (PR3TC1b).** 68 x 149mm, gorgeous color, showing full-size uncleared die and mounting holes for attaching to the press, bright and fresh

VERY FINE. A UNIQUE COLOR FOR THE 25-CENT 1865 NEWSPAPER ISSUE TRIAL COLOR PROOFS.

Ex Kotanchik. With 2006 P.F. certificate 2,500.00



3—ALL

- 3 P **5c-25c 1865 Newspaper Issue, Hybrid Large Die Proofs on India (PR2P1-PR4P1).** Cut to size and mounted on 146 x 226mm pages from a presentation album, brilliant colors, some minor toning along the edges of the cards, Very Fine, ex Kotanchik 1,800.00

1865 ISSUE PLATE PROOFS

- 4 TC **5c-25c 1865 Newspaper Issue, Trial Color Plate Proofs on Thick Cream Wove (PR2TC5-PR4TC5).** Complete set of twelve **top imprint and plate number strips of three** in all four listed colors — Black, Lake, Blue Green and Blue — large margins, two 25c with small faults in selvage

VERY FINE. A REMARKABLE SET OF TRIAL COLOR PLATE PROOFS WITH IMPRINT AND PLATE NUMBERS FOR THE FIRST LARGE-FORMAT NEWSPAPER STAMPS.

Ex Kotanchik and Curtis. Scott value as singles without premium for the positions is \$3,060.00 and does not convey the rarity or desirability of these imprint and plate number strips.....
(Photo Ex/Website PDF) E. 3,000-4,000



4EX



5EX

- 5 TC **5c Black, Blue Green, 1865 Newspaper Issue, Trial Color Plate Proofs on Thick Cream Wove (PR4TC5).** Two imprint and plate no. 38 blocks of six, Black bottom plate block and Blue Green top plate block, large margins, fresh and Very Fine, ex Schwenk, Scott value as singles without premium for the positions is \$1,020.00, which does not convey the rarity or desirability of these imprint and plate number blocks.....
(Photo Ex/Website PDF) E. 1,000-1,500

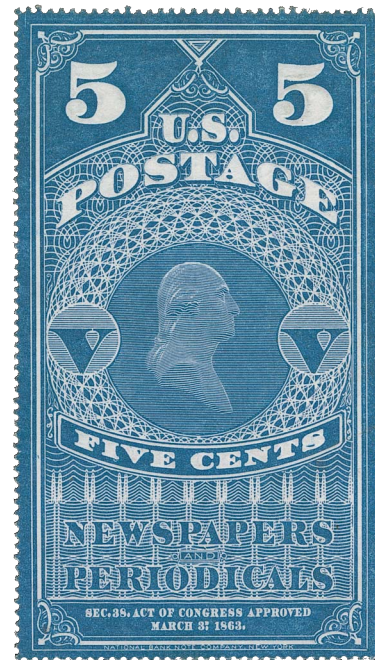


6

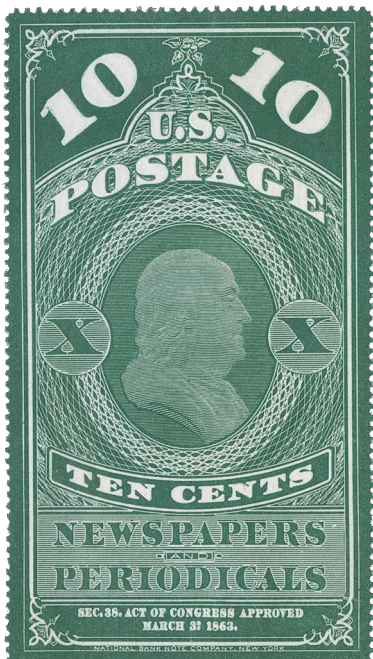
1865 ISSUE STAMPS

- 6 ★ **5c Dark Blue, Colored Border, 1865 Issue (PR1).** Without gum as issued, gorgeous centering and margins, intense shade, minor pencil markings on back not mentioned on certificate, Extremely Fine, with 2014 P.F. certificate (XF 90 XQ), the "XQ" denotes "Extraordinary Quality" 750.00

- 7 ★ **5c Dark Blue, Colored Border, 1865 Issue (PR1).** Without gum as issued, fresh color which is distinctly lighter than the previous lot, well-centered, Very Fine and choice, ex Weisman and Floyd, with 1991 P.S.E. certificate as Dark Blue No. PR1, with 1991 P.F. certificate as "Light Blue" but catalogued as PR1 (the 1991 Scott Catalogue did have a listing for No. PR1a "Light Blue"), Scott value as PR1 Dark Blue 750.00



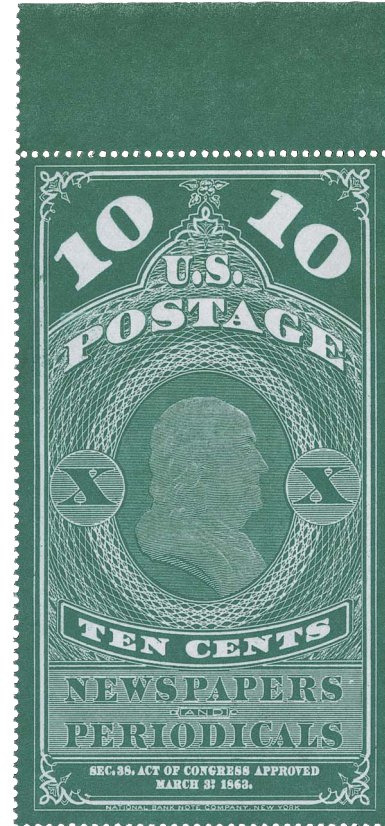
7



8

- 8 ★ **10c Blue Green, Colored Border, 1865 Issue (PR2).** Without gum as issued, outstanding centering and margins, Extremely Fine, with 2003 P.F. certificate 300.00

- 9 ★ **10c Blue Green, Colored Border, 1865 Issue (PR2).** Without gum as issued, selvage at top, wonderful depth of color, well-centered, Very Fine and choice, with 2010 P.S.E. certificate 300.00



9



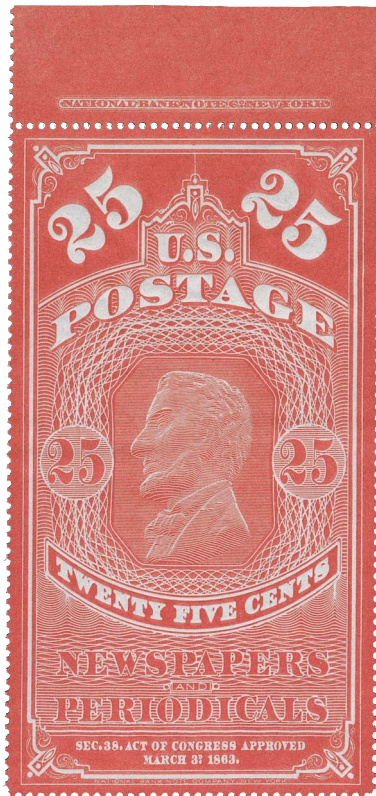
10

- 10 **10c Blue Green, Colored Border, 1865 Issue (PR2).** Strong color, blue “P” brushstroke cancel, typical faults including a couple small tears and trimmed perfs at bottom right

FINE APPEARING AND RARE USED EXAMPLE OF THE 10-CENT 1865 NEWSPAPER ISSUE. THIS EXAMPLE HAS BETTER APPEARANCE THAN NORMALLY ENCOUNTERED.

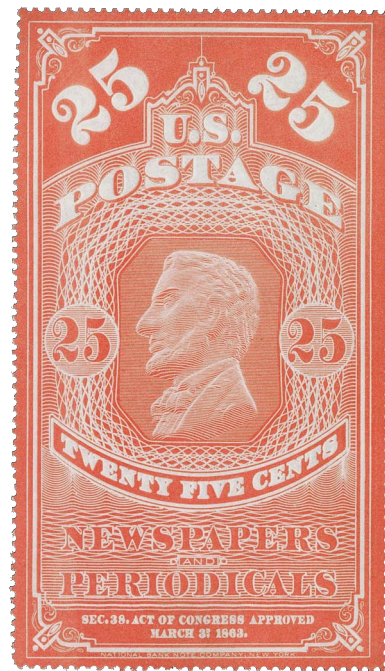
The few genuinely used examples of this issue we have offered all have faults to varying degrees. Only one other listed in Power Search (ex “Golden Oak”) has comparable appearance to this example.

Ex Braceland, Collier and Curtis. With 2005 P.F. certificate..... 2,000.00



11

- 11 ★ **25c Carmine Red, Colored Border, 1865 Issue (PR3a).** Without gum as issued, with **top imprint selvage**, fiery color in the distinctive Carmine Red shade, choice centering and margins, Extremely Fine, a premium example of this issue, ex Floyd, with 2001 P.F. certificate 475.00



12

- 12 ★ **25c Orange Red, Colored Border, 1865 Issue (PR3).** Without gum as issued, brilliant color, attractive centering and margins, fresh and Very Fine, with 2004 P.S.E. and 2011 P.F. certificates 400.00



13

- 13 ★ **5c Light Blue, White Border, 1865 Issue (PR4).** Without gum as issued, with **top selvage**, rich color, Very Fine and choice, ex Floyd, with 2001 P.F. certificate 850.00

1875 CONTINENTAL BANK NOTE COMPANY SPECIAL PRINTING



14

14 ★ **5c-25c Newspaper, 1875 Special Printing, Imperforate (PR5 var-PR7 var).** Without gum as issued, each with top sheet margin, huge margins other sides, brilliant colors

EXTREMELY FINE. A RARE AND DESIRABLE SET OF THE 1875 CONTINENTAL BANK NOTE COMPANY SPECIAL PRINTING OF THE FIRST NEWSPAPER ISSUE.

According to the Scott Catalogue, the Continental Bank Note Co. made a second special printing from new plates, which did not have the colored border. They exist both perforated and imperforate, and were not regularly issued.

Each with 2006 P.S.E. certificate. 3,250.00



- 15 ★ **5c Dull Blue, 1875 Reprint (PR5).** Without gum as issued, essentially perfect centering with wide margins, deep rich color on crisp white paper, Extremely Fine Gem, a superb stamp, with 2007 P.F. certificate (XF-Superb 95)..... 225.00
- 16 ★ **5c Dull Blue, 1875 Reprint (PR5).** Without gum as issued, bright shade, beautifully balanced margins, Extremely Fine, ex Floyd, with 2001 P.F. certificate..... 225.00
- 17 ★ **10c Dark Bluish Green, 1875 Reprint (PR6).** Without gum as issued, outstanding centering and margins, deep rich color, Extremely Fine, ex Floyd, with 1999 P.F. certificate.... 250.00
- 18 ★ **10c Dark Bluish Green, 1875 Reprint (PR6).** Without gum as issued, deep rich color, wide margins and well-centered, Very Fine and choice 250.00
- 19 ★ **25c Dark Carmine, 1875 Reprint (PR7).** Without gum as issued, gorgeous color, choice centering and margins, Extremely Fine, with 2002 P.F. and 2005 P.S.E. certificates (XF 90; SMQ \$475.00) 300.00
- 20 ★ **25c Dark Carmine Red, 1875 Reprint (PR7 var).** Without gum as issued, brilliant color, Very Fine, ex Floyd, with 1998 P.F. certificate..... 300.00
- 21 ★ **5c Dark Blue, White Border, 1881 Reprint (PR8).** Without gum as issued, deep rich color, attractive centering and margins, fresh and Very Fine, with 2007 P.F. certificate (VF 80) 700.00

1875 CONTINENTAL BANK NOTE COMPANY DIE PROOFS



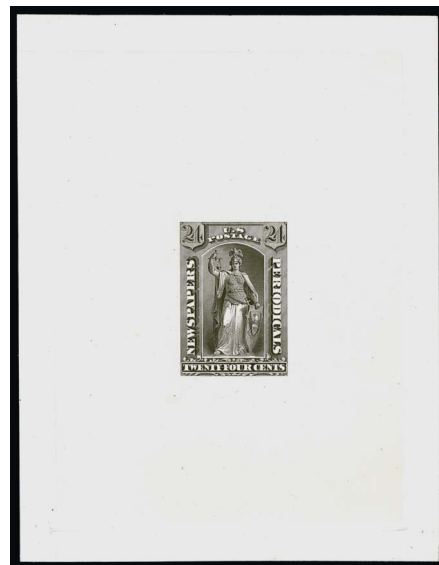
22EX

- 22 TC **12c 1875 Issue, Large Die Trial Color Proofs on India (PR16TC1a).** Seven of the eight Scott-listed colors, missing only the Brown Rose, printed on India paper and die sunk on cards, six cards are approximately 115 x 170mm, the Black cut down to just outside the die sinkage area, brilliant colors throughout

VERY FINE. A LIKELY UNIQUE SET OF LARGE DIE TRIAL COLOR PROOFS FOR THE 12-CENT 1875 NEWSPAPER ISSUE.

Each example of nearly all of these colors is believed to be unique. The National Postal Museum reportedly has a second example in Green. Scott value of \$600.00 each seems very conservative for this level of rarity.(Photo Ex/Website PDF) 4,200.00

- 23 TC **24c 1875 Issue, Large Die Trial Color Proofs on India (PR17TC1a).** Three, in the Scott-listed Green and Black as well as unlisted Sepia, printed on approximately 80 x 115mm India paper and die sunk on slightly larger cards, brilliant colors, fresh and Very Fine trio, each of these is believed unique, Scott value of \$600.00 each is quite modest for such rarity.....(Photo Ex/Website PDF) 1,800.00



23EX



24EX

- 24 TC **36c 1875 Issue, Large Die Trial Color Proofs on India (PR18TC1a).** Three, in each of the Scott-listed colors, printed on India paper and die sunk on card, Sepia 115 x 166mm, Black 93 x 123mm and Green 114 x 169mm, gorgeous colors, fresh and Very Fine trio, each of these is believed unique, with 2010 P.F. certificates, Scott value of \$600.00 each is quite modest for such rarity.....
(Photo Ex/Website PDF) 1,800.00



25EX

- 25 TC **48c 1875 Issue, Large Die Trial Color Proofs on India (PR19TC1a).** Three, in each of the Scott-listed colors, printed on India paper and die sunk on card, Sepia 114 x 156mm, Black 100 x 125mm and Green 114 x 156mm, beautiful colors, fresh and Very Fine trio, each of these is believed unique, Scott value of \$600.00 each is quite modest for such rarity.....
(Photo Ex/Website PDF) 1,800.00



26EX

- 26 TC **\$1.92 1875 Issue, Large Die Trial Color Proofs on India (PR24TC1a).** Two, in both of the Scott-listed colors, printed on India paper and die sunk on card, Orange Brown 115 x 168mm, Green 113 x 168mm, fresh colors, Very Fine pair of trial color proofs, each is believed unique, Scott value of \$600.00 each is quite modest for such rarity.....
(Photo Ex/Website PDF) 1,200.00



27EX

- 27 TC **\$3.00 1875 Issue, Large Die Trial Color Proofs on India (PR25TC1a).** Six of the nine Scott-listed colors, printed on India paper and die sunk on cards, five cards are approximately 114 x 166mm, the Light Ultramarine on slightly smaller 83 x 106mm card, brilliant colors throughout

VERY FINE. A LIKELY UNIQUE SET OF LARGE DIE TRIAL COLOR PROOFS FOR THE \$3.00 1875 NEWSPAPER ISSUE.

Each example of nearly all of these colors is believed to be unique. The National Postal Museum reportedly has a second example in Sepia. Scott value of \$600.00 each seems very conservative for this level of rarity.(Photo Ex/Website PDF) 3,600.00



28EX

- 28 TC **\$6.00 1875 Issue, Large Die Trial Color Proofs on India (PR26TC1a).** Ten total proofs, including nine of the eleven Scott-listed colors plus unlisted Dark Brown, missing only the Light Blue and Dark Carmine, printed on India paper and die sunk on cards, nine cards are approximately 114 x 168mm, the Black on smaller 69 x 77mm card, gorgeous colors throughout

VERY FINE. A LIKELY UNIQUE SET OF LARGE DIE TRIAL COLOR PROOFS FOR THE \$6.00 1875 NEWSPAPER ISSUE.

Each example of nearly all of these colors is believed to be unique. The National Postal Museum reportedly has second examples in Dull Orange and Dark Violet. Scott value of \$600.00 each seems very conservative for this level of rarity.(Photo Ex/Website PDF) 6,000.00



29EX

- 29 TC **\$9.00 1875 Issue, Large Die Trial Color Proofs on India (PR27TC1a).** Six of the eleven Scott-listed colors, printed on India paper and die sunk on cards, three cards are approximately 114 x 168mm, three others are cut down to approximately 74 x 76mm (one of these is India mounted on card and not die sunk), bright colors throughout

VERY FINE. A LIKELY UNIQUE SET OF LARGE DIE TRIAL COLOR PROOFS FOR THE \$9.00 1875 NEWSPAPER ISSUE.

Each example of nearly all of these colors is believed to be unique. The National Postal Museum reportedly has second examples in Scarlet and Black. Scott value of \$600.00 each seems very conservative for this level of rarity....(Photo Ex/Website PDF) 3,600.00

- 30 TC **\$9.00 Violet Black, 1875 Issue, Large Die Trial Color Proof on India (PR27TC1a).** Printed on India paper and die sunk on 120 x 166mm card, pencil "Color-Orange" at bottom indicating the approved color, Very Fine and rare, reportedly one of two known 600.00



30



31

- 31 TC **\$12.00 Orange Brown, 1875 Issue, Large Die Trial Color Proof on India (PR28TC1a).** Printed on India paper and die sunk on 104 x 169mm card, rich color, Very Fine and rare, reportedly the only known example in this color (three colors are listed in Scott)..... 600.00

1875 CONTINENTAL BANK NOTE COMPANY PLATE PROOFS



32EX

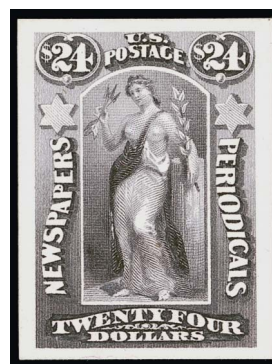
- 32 TC **12c-\$9.00 1875 Issue, Trial Color Plate Proofs (PR16TC3-PR27TC3).** Outstanding mounted collection of 18 blocks of four plus a block of eight with part imprint, including Nos. PR16TC3 (four blocks, different colors), PR17TC3-PR23TC3 in Black, PR24TC3 (three blocks, different colors), PR25TC3 (two blocks, different colors), PR26TC3 (five blocks in different colors plus a part imprint block of eight), PR27TC3 (six blocks, different colors)

VERY FINE. A FRESH AND BEAUTIFUL COLLECTION OF TRIAL COLOR PLATE PROOF BLOCKS OF THE 1875 NEWSPAPER ISSUE.

Scott value as singles.(Photo Ex/Website PDF) 4,060.00



33EX



34EX

- 33 P **2c-24c 1875 Issue, Plate and Trial Color Proofs (PR9TC3, PR16TC3, PR17P3).** Mounted on album pages, including No. PR9TC3 pair in Sepia and block of four in Black, PR16TC3 with ten different colors, each of the aforementioned trial color proofs are either printed on card or card backed (listed in Scott only on India), finally No. PR17P3 imprint pair, fresh and Very Fine group.....(Photo Ex/Website PDF) 590.00
- 34 P **2c-\$60.00 1875-85 Issues, Plate Proofs on Card (PR9P4-PR89P4).** Complete sets mounted on album pages, large margins essentially throughout, beautiful colors, Very Fine-Extremely Fine.....(Photo Ex/Website PDF) 798.00

1875 CONTINENTAL BANK NOTE COMPANY ISSUED STAMPS



35

- 35 ★ **3c Black, 1875 Issue (PR10).** Original gum, lightly hinged, choice centering and margins, fresh and Extremely Fine, with 1992 P.F. and 2008 P.S.E. certificates..... 300.00



36

- 36 ★ **4c Black, 1875 Issue (PR11).** Original gum, well-centered, Very Fine and choice, with 2002 P.F. certificate..... 300.00



37

- 37 ★ **8c Black, 1875 Issue (PR13).** Original gum, small h.r., intense shade, wide margins, fresh and Extremely Fine, despite its modest catalogue value this issue is scarce with original gum, ex "Vineyard", with 1998 P.F. certificate 350.00



38

- 38 ★ **12c Rose, 1875 Issue (PR16).** Original gum, lightly hinged, outstanding centering with wide and well-balanced margins, brilliant color

EXTREMELY FINE ORIGINAL-GUM EXAMPLE OF THE 12-CENT 1875 NEWSPAPER ISSUE, GRADED XF 90. THIS IS THE HIGHEST GRADED EXAMPLE IN THE P.S.E. POPULATION REPORT.

With 2002 P.F. and 2008 P.S.E. certificates (OGph, XF 90; SMQ \$1,300.00). This is the highest grade awarded to an original-gum example of Scott PR16 and it is shared by no others..... 800.00

Post Office at _____

Amount brought forward.....\$ 4 99

No. 57 Date: *Jan 22, 1875*
 Name of Publication or News Agent: *Weekly Register*

9 pounds, at 2 cents per pound, amounting to\$ 18
 pounds, at 3 cents per pound, amounting to\$ 18

(HERE AFFIX

No. 58 Date: *Jan 23, 1875*
 Name of Publication or News Agent: *Weekly Register*

14 pounds, at 2 cents per pound, amounting to\$ 28
 pounds, at 3 cents per pound, amounting to\$ 28

Amount carried forward.....\$ 5 43

39

12c Rose, 1875 Issue (PR16). Horizontal pair and single, used with **4c and 6c Black, 1875 Issue (PR11-PR12)**, cancelled by manuscript "X" on Jan. 1, 1875 and Jan. 23, 1875 dated Post Office Department receipts for nine and fourteen pounds of the *Weekly Register* newspaper, each receipt represents half a page from a ledger book, stamps with some slight perf tip toning, still Very Fine, unlike with regular postage issues, rarely do we see evidence of how these beautiful stamps were actually used E. 500-750

39



40

- 40 ★ **24c Rose, 1875 Issue (PR17).** Original gum, lightly hinged, brilliant color, choice centering, Extremely Fine, a beautiful stamp, with 2004 P.F. certificate 850.00

- 41 ★ **36c Rose, 1875 Issue (PR18).** Original gum, bright color, well-balanced margins, Very Fine and choice, with 2003 P.F. certificate..... 850.00



41



42

- 42 ★ **48c Rose, 1875 Issue (PR19).** Original gum, brilliant color, well-proportioned margins with long and full perforations all around

EXTREMELY FINE ORIGINAL-GUM EXAMPLE OF THE 36-CENT CONTINENTAL BANK NOTE COMPANY NEWS-PAPER ISSUE.

Ex "Vineyard". With 1995 P.F. certificate ... 1,250.00

- 43 ★ **60c Rose, 1875 Issue (PR20).** Original gum, lightly hinged, bright color, balanced margins, Very Fine, with 2002 P.F. certificate..... 1,250.00



43



44

- 44 ★ **72c Rose, 1875 Issue (PR21).** Original gum, lightly hinged, unusually wide margins, brilliant color, Very Fine and choice, ex Ballman, with 1998 P.F. certificate 1,500.00

- 45 ★ **84c Rose, 1875 Issue (PR22).** Original gum, lightly hinged, detailed impression on bright white paper, perfectly centered with balanced margins

EXTREMELY FINE GEM ORIGINAL-GUM EXAMPLE OF THE 84-CENT 1875 CONTINENTAL NEWSPAPER ISSUE.

Ex McNall and from our 2003 Rarities sale. With 2003 P.F. certificate..... 1,850.00



45

- 46 ★ **96c Rose, 1875 Issue (PR23).** Original gum, lightly hinged, vibrant color and detailed impression

VERY FINE. THE 96-CENT 1875 CONTINENTAL NEWSPAPER ISSUE IS VERY RARE IN SOUND ORIGINAL-GUM CONDITION.

This is only the second PR23 with original gum we have offered in decades. The other was in our 2004 sale of the "Vineyard" collection. The stamp offered here was acquired in our 2016 sale of the Grant Inman collection.

Ex Inman. With 2000 and 2016 P.F. certificates.
..... 2,000.00



46



47

- 47 ★ **\$1.92 Dark Brown, 1875 Issue (PR24).** Original gum, deep rich color on fresh white paper, Very Fine and choice, scarce with such wide margins, ex Drucker, with 2002 P.F. certificate..... 1,750.00

- 48 ★ **\$3.00 Vermilion, 1875 Issue (PR25).** Large part original gum which thinly covers more than half the back, brilliant color, outstanding centering and margins

EXTREMELY FINE GEM EXAMPLE OF THE \$3.00 1875 CONTINENTAL NEWSPAPER ISSUE, WITH LARGE PART ORIGINAL GUM. THIS IS ONE OF THE MOST DIFFICULT DENOMINATIONS OF THE SERIES TO OBTAIN IN CHOICE CENTERED CONDITON.

With 1999 P.F. certificate stating "part o.g." Scott value as original gum. 2,500.00



48



49

- 49 ★ **\$6.00 Ultramarine, 1875 Issue (PR26).** Original gum, bright color and detailed impression, attractive centering and margins

EXTREMELY FINE. A BEAUTIFUL ORIGINAL-GUM EXAMPLE OF THE \$6.00 1875 CONTINENTAL NEWSPAPER ISSUE. THIS IS ONE OF THE SCARCEST NEWSPAPER STAMPS TO FIND IN SOUND, CENTERED, ORIGINAL-GUM CONDITION.

Sound, centered, original-gum examples of high-denomination Newspapers & Periodicals stamps printed by the Continental Bank Note Co. are incredibly rare. A search of several collections containing superb offerings of these issues, such as Lutwak, Cole, Lyons, Floyd and Lessin, has failed to find its equal. We have offered only one in comparable condition, which is ex Drucker and Inman.

Ex "Vineyard". With 1988 and 2002 P.F. certificates..... 4,000.00

- 50 ★ **\$9.00 Yellow, 1875 Issue (PR27).** Original gum, fiery color, choice centering and margins

EXTREMELY FINE. A BEAUTIFUL ORIGINAL-GUM EXAMPLE OF THE \$9.00 1875 NEWSPAPER ISSUE.

Sound, original-gum and centered examples of high-denomination Newspapers & Periodicals stamps, particularly of the First Issue, are incredibly rare. Only a handful of PR27s exist in this quality.

With 2002 P.F. certificate 4,500.00



50



51

- 51 ★ **\$24.00 Dark Gray Violet, 1875 Issue (PR29).** Original gum, lightly hinged, dark color, well-centered on bright white paper

EXTREMELY FINE. A BEAUTIFUL ORIGINAL-GUM EXAMPLE OF THE \$24.00 1875 CONTINENTAL NEWSPAPER ISSUE. RARELY SEEN IN THIS CHOICE CONDITION.

Ex Lutwak and Drucker. With 1981 and 2002 P.F. certificates. 4,750.00

- 52 ★ **\$36.00 Brown Rose, 1875 Issue (PR30).** Original gum, deep shade on crisp paper, beautifully centered
EXTREMELY FINE. AN EXCEEDINGLY RARE SOUND, ORIGINAL GUM, CENTERED EXAMPLE OF THE \$36.00 1875 NEWSPAPER ISSUE.

The 1875 \$36.00 Continental Newspapers & Periodicals issue is very rare in centered original-gum condition. We have offered only two other comparable examples since this stamp was sold in our 2002 sale of the Drucker collection — one in our 2004 “Vineyard” sale and one in our 2016 sale of the Inman collection. Every other stamp either has a fault or only Fine centering.

Ex Drucker. With 1986 and 2002 P.F. certificate.
..... 5,000.00



52



53

- 53 ★ **\$48.00 Red Brown, 1875 Issue (PR31).** Original gum, lightly hinged, rich color and detailed impression, choice centering with unusually wide margins

EXTREMELY FINE. A SUPERB SOUND AND WIDE-MARGINED ORIGINAL-GUM EXAMPLE OF THE \$48.00 1875 NEWSPAPER ISSUE. AN EXCEEDINGLY RARE STAMP IN SUCH CHOICE QUALITY.

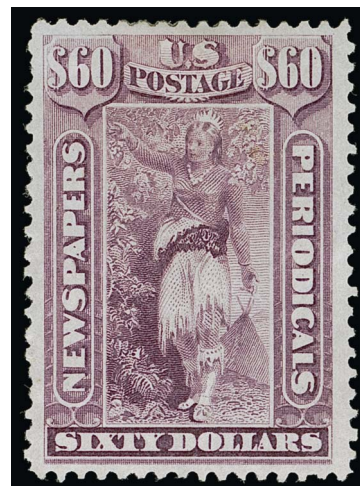
The high-value 1875 Issue stamps are among the most difficult of all Newspapers & Periodicals to obtain in sound original-gum condition with any degree of choice centering. This example of the \$48.00 is particularly striking with wider margins than any others we have offered.

With 2000 P.S.E. and 2001 P.F. certificates... 7,000.00

- 54 ★ **\$60.00 Violet, 1875 Issue (PR32).** Original gum, bright color and proof-like impression, well-centered with wide margins

EXTREMELY FINE. AN OUTSTANDING ORIGINAL-GUM EXAMPLE OF THE \$60.00 1875 CONTINENTAL NEWSPAPER ISSUE. VERY RARE IN THIS SUPERB QUALITY.

Ex Drucker. With 1983 and 2002 P.F. certificates...
..... 6,500.00



54

1875 CONTINENTAL BANK NOTE COMPANY SPECIAL PRINTING



55

- 55 ★ **2c Gray Black, 1875 Special Printing (PR33).**
Without gum as issued, wide margins, intense shade on bright white paper, Very Fine and choice, with 1992 P.F. and P.S.E. certificates, with 2001 P.F. certificate..... 700.00



56

- 56 ★ **3c Gray Black, 1875 Special Printing (PR34).**
Without gum as issued, excellent centering with wide margins, bright and fresh, Very Fine and choice, ex Floyd, with 1990 and 2001 P.F. certificates..... 700.00



57

- 57 ★ **4c Gray Black, 1875 Special Printing (PR35).**
Without gum as issued, choice centering on bright white paper, fresh and Extremely Fine, with 2007 P.F. certificate (XF 90)..... 700.00



58

- 58 ★ **4c Gray Black, 1875 Special Printing (PR35).**
Without gum as issued, intense shade and sharp proof-like impression on bright paper, well-centered with wide margins, Extremely Fine, ex Drucker, with 1986 and 2008 P.F. certificates..... 700.00

- 59 ★ **6c Gray Black, 1875 Special Printing (PR36).**
Without gum as issued, extra wide margins and
well-centered, intense shade on crisp paper,
Extremely Fine, with 1985 and 2001 P.F. certi-
ficates..... 900.00



59



60

- 60 ★ **8c Gray Black, 1875 Special Printing (PR37).**
Without gum as issued, outstanding centering with
balanced margins, bright shade, Extremely Fine, a
lovely stamp, with 2001 P.F. certificate..... 975.00

- 61 ★ **9c Gray Black, 1875 Special Printing (PR38).**
Without gum as issued, crisp impression, outstand-
ing centering
EXTREMELY FINE EXAMPLE OF THE 9-CENT 1875
CONTINENTAL NEWSPAPER SPECIAL PRINTING.
Ex "Silver Lake". With 1995 P.S.E. and 2006 P.F.
certificates (XF 90) 1,050.00



61



62

- 62 ★ **10c Gray Black, 1875 Special Printing (PR39).**
Without gum as issued, almost perfectly centered with Jumbo margins all around, crisp impression on bright paper

EXTREMELY FINE GEM. AN EXCEPTIONAL JUMBO-MARGINED EXAMPLE OF THE 10-CENT 1875 CONTINENTAL NEWSPAPER SPECIAL PRINTING, GRADED XF-SUPERB 95 JUMBO BY P.S.E — THE HIGHEST GRADE AWARDED AND PROBABLY THE FINEST EXAMPLE EXTANT.

Ex "Beverly Hills" and from our 2002 Rarities sale. 1981 P.F. certificate no longer accompanies. With 2004 and 2009 P.S.E. certificates (XF-Superb 95 Jumbo; SMQ \$3,850.00). This is the highest grade awarded and it is shared by no others. The next highest grade is a single example at XF 90.
..... 1,400.00

- 63 ★ **12c Pale Rose, 1875 Special Printing (PR40).**
Without gum as issued, incredibly well-centered with full intact perforations, fresh color and sharp impression

EXTREMELY FINE GEM. EASILY ONE OF THE FINEST QUALITY NEWSPAPER SPECIAL PRINTINGS TO HAVE SURVIVED AND A GREAT CONDITION RARITY.

Small red backstamp. With 2008 P.S.E. certificate (XF-Superb 95; \$4,050.00). Only one other shares this grade with just two higher (both at 95J).
..... 1,500.00



63



64

- 64 ★ **24c Pale Rose, 1875 Special Printing (PR41).**
Without gum as issued, bright color and detailed impression

VERY FINE AND CHOICE EXAMPLE OF THE 24-CENT 1875 CONTINENTAL NEWSPAPER SPECIAL PRINTING.

Only 411 sold. With 2001 P.F. certificate.... 2,100.00

- 65 ★ **36c Pale Rose, 1875 Special Printing (PR42).**
Without gum as issued, well-centered with wide margins, pretty pastel shade, full perforations not often seen on this issue

EXTREMELY FINE EXAMPLE OF THE 36-CENT 1875 CONTINENTAL NEWSPAPER SPECIAL PRINTING.

Only 330 sold. With 2001 P.F. and 2008 P.S.E. certificates..... 2,800.00



65



66

- 66 ★ **48c Pale Rose, 1875 Special Printing (PR43).**
Without gum as issued, choice centering with balanced margins, brilliant color on bright white paper, long and full perforations all around

EXTREMELY FINE EXAMPLE OF THE 36-CENT 1875 CONTINENTAL NEWSPAPER SPECIAL PRINTING.

Only 330 sold. Ex Cole. With 2001 and 2007 P.F. certificates (XF 90)..... 3,750.00

- 67 ★ **60c Pale Rose, 1875 Special Printing (PR44).**
Without gum as issued, beautifully centered with balanced margins, bright color, couple slightly nibbed perfs at right not mentioned on any certificate

EXTREMELY FINE APPEARING EXAMPLE OF THE 60-CENT 1875 CONTINENTAL NEWSPAPER SPECIAL PRINTING.

Only 222 were sold, most of which are off-center and/or have small faults. Ex Engel, Hillmer, Greenblatt and Weisman. With clear 1990 P.S.E., 1958 and 2002 P.F. certificates 4,750.00



67



68

- 68 ★ **72c Pale Rose, 1875 Special Printing (PR45).** Without gum as issued, attractive centering with wide margins top and bottom, fresh color on crisp paper

VERY FINE EXAMPLE OF THE SCARCE 72-CENT 1875 CONTINENTAL NEWSPAPER SPECIAL PRINTING.

Only 174 were sold. Ex Drucker. Signed in pencil on back. With 1987 and 2002 P.F. certificates.... 4,500.00

- 69 ★ **84c Pale Rose, 1875 Special Printing (PR46).** Without gum as issued, radiant color on bright paper

VERY FINE. A FRESH AND ATTRACTIVE SOUND EXAMPLE OF THE 84-CENT 1875 CONTINENTAL NEWSPAPER SPECIAL PRINTING.

Only 164 were sold and many of the examples we have offered have a fault. Ex Lessin. With 1975 and 2002 P.F. certificates..... 5,750.00



69

- 70 ★ **96c Pale Rose, 1875 Special Printing (PR47).** Without gum as issued, **stitch watermark** at bottom, radiant color on bright paper, choice margins and centering — far better than normally encountered on this difficult issue

VERY FINE AND CHOICE. A RARE SOUND AND CENTERED EXAMPLE OF THE 96-CENT 1875 CONTINENTAL NEWSPAPER SPECIAL PRINTING.

Only 141 sold. A Power Search review shows that most examples we have offered are either off-center or have small faults. The example offered here is a notable exception.

Ex Engel. With 1960, 1992 and 2002 P.F. certificates..... 10,000.00



70



71

- 71 ★ **\$1.92 Dark Brown, 1875 Special Printing (PR48).** Without gum as issued, deep rich color on bright paper, wide margins and choice centering

EXTREMELY FINE. A GORGEOUS SOUND AND CENTERED EXAMPLE OF THE RARE \$1.92 1875 CONTINENTAL NEWSPAPER SPECIAL PRINTING. ONLY 41 WERE SOLD.

The \$1.92 value of the 1875 Continental Newspaper Special Printing marks the start of the rarities of the set. We have offered only about a dozen unduplicated examples in all of our Rarities sales going back to 1964 and in our regular auctions since 1994. This example, in sound condition and with choice centering, ranks among the few finest examples known.

Ex Lutwak, Greenblatt and Weisman. With 1976, 1998 and 2014 P.F. certificates.
 22,500.00



\$3.00 1875 NEWSPAPER SPECIAL PRINTING, SCOTT PR49
ONE OF SIX RECORDED EXAMPLES

72 ★ **\$3.00 Vermilion, 1875 Special Printing (PR49).** Without gum as issued, vivid color, attractive margins and centering, completely sound

VERY FINE. AN EXTREMELY RARE EXAMPLE OF THE \$3.00 1875 CONTINENTAL NEWSPAPER SPECIAL PRINTING. ONLY 20 WERE SOLD, AND ONLY SIX ARE CONTAINED IN OUR CENSUS.

According to sale records of the 1875 Newspaper Special Printings, 20 of the \$3.00 were sold and delivered. On July 16, 1884, the Special Printings were withdrawn from sale, and the remaining supply was destroyed.

Our census of PR49, available at <https://siegelauctions.com/census/us/scott/PR49>, contains six examples, all with similar centering, which one would expect since they probably came from one sheet. Three are certified with a fault.

Census no. PR49-UNC-02. Ex Engel, McNall, Weisman and Ballman. With 1992 P.S.E. certificate. With 1960, 1992, 2002 and 2011 P.F. certificates..... 45,000.00

CENSUS OF \$3.00 1875 NEWSPAPER SPECIAL PRINTING (SCOTT PR49)



Census No. PR49-UNC-01
Sale History RAS 4/19/1979
Certification Inman, RAS 6/21/2016
PFC 36482 "Genuine, some
tiny spots at bottom"
PFC 225878 "Genuine"



Census No. PR49-UNC-02
Sale History Engel, Corinphila 5/29/1975
Certification McNall, Superior 10/26/1992
Weisman, SPG 5/8/1998
PFC 12302 "Genuine"
PFC 259917 "Genuine"
PFC 391909 "Genuine"
PFC 494701 "Genuine"
Lot 72 in this sale



Census No. PR49-UNC-03
Sale History RAS 1974 Rarities
Certification RAS 10/22/1974
Petersen, RAS 4/29/2021
PFC 45162 "Genuine,
reperfed top and bottom,
small corner crease"
PFC 461710 "Genuine,
reperfed top and bottom,
small corner perf crease TR"



Census No. PR49-UNC-04
Sale History PFC 227322 "Genuine, small
Certification central thin spot"
PSE 17258 "Genuine"
PSE 1121320 "Genuine"
PFC 455207 "Genuine, small
central thin spot just below
Victory's Belt"



Census No. PR49-UNC-05
Sale History RAS 5/12/1992
Certification PFC 10205 "Genuine"
PFC 260657 "Genuine"



Census No. PR49-UNC-06
Sale History Schedler, RAS 9/10/1975
Certification RAS 1990 Rarities
RAS 10/24/1990
PFC 51576 "Genuine"
PFC 227322 "Genuine, small
thin spot"



\$6.00 1875 NEWSPAPER SPECIAL PRINTING, SCOTT PR50
ONE OF SEVEN RECORDED EXAMPLES

73 ★ \$6.00 Ultramarine, 1875 Special Printing (PR50). Without gum as issued, choice centering and wide margins, fresh and bright color

VERY FINE. THIS IS THE FINEST EXAMPLE OF THE \$6.00 AMERICAN BANK NOTE COMPANY NEWSPAPER SPECIAL PRINTING IN OUR RECORDS. ONLY FOURTEEN WERE SOLD, AND ONLY SEVEN HAVE BEEN CERTIFIED AS GENUINE. ONE OF THE RAREST STAMPS IN UNITED STATES PHILATELY.

According to sale records of the 1875 Newspaper Special Printings, 14 of the \$6.00 were sold and delivered. On July 16, 1884, the Special Printings were withdrawn from sale, and the remaining supply was destroyed.

Our census of Scott PR50, available at <https://siegelauctions.com/census/us/scott/PR50>, contains only seven examples. Six are certified by The Philatelic Foundation and two by P.S.E.

Census no. PR50-UNC-01. Ex Wingate and from our 2003 Rarities sale. With 2003 and 2018 P.F. certificates..... 80,000.00

CENSUS OF \$6.00 1875 NEWSPAPER SPECIAL PRINTING (SCOTT PR50)



Census No. PR50-UNC-01
Sale History RAS 2003 Rarities
 Wingate, RAS 4/11/2018
 PFC 393820 "Genuine"
 PFC 552906 "Genuine"
Certification Lot 73 in this sale



Census No. PR50-UNC-02
Sale History SR 12/18/2020
 Przybyl, RAS 11/9/2021
 PFC 29342 "Genuine"
 PFC 476374 "Genuine,
 reperfed at bottom"



Census No. PR50-UNC-03
Sale History Engel, Corinphila 5/29/1975
 McNall, Superior 10/26/1992
 Weisman, SPG 5/8/1998
 Inman, RAS 6/21/2016
 RAS 2017 Rarities
 PFC 259918 "Genuine"



Census No. PR50-UNC-04
Sale History RAS 4/19/1979
 PFC 189694 "Genuine"
 PFC 548368 "Genuine"



Census No. PR50-UNC-05
Sale History Schwenk, RAS 9/18/2014
 PSE (2003) "Genuine"
Certification



Census No. PR50-UNC-06
Sale History RAS 3/1/2017
 PFC 86844 "Genuine"
 PFC 542092 "Genuine"



Census No. PR50-UNC-07
Sale History Petersen, RAS 4/29/2021
 PSE 1121321 "Genuine"
 PFC 574814 "Genuine"

1879 AMERICAN BANK NOTE COMPANY ISSUE



74EX



75EX

- 74 P 1c-\$60.00 1879-85 Issues, Plate Proofs (PR78P3, PR79P4, PR81P3, PR83P3). Four blocks of four, three are India paper proofs and one card proof, No. PR81P3 with **top imprint and plate no. 482**, full to large margins, Very Fine group.....(Photo Ex/Website PDF) 465.00
- 75 S 12c-96c 1879 Issue, "Specimen" Ovpt. Ty. D (PR63S-D to PR70S-D). Original gum, rich colors, most with decent centering and margins, just one is touched on one side, fresh and Fine-Very Fine set.....(Photo Ex/Website PDF) 600.00



76



77



78

- 76 ★★ 2c Black, 1879 Issue (PR57). Mint N.H., exceptionally choice centering with wide margins, intense shade, Extremely Fine Gem, a superb stamp, ex DePriest, with 2001 P.F. certificate, Scott value as hinged 75.00
- 77 ★ 4c Black, 1879 Issue (PR59). Original gum, precise centering, intense shade, Extremely Fine..... 85.00
- 78 ★ 8c Black, 1879 Issue (PR61). Original gum, well-centered, fresh and Extremely Fine 135.00



79



80

- 79 ★ **10c Black, 1879 Issue (PR62).** Original gum, lightly hinged, intense shade, beautifully centered, Extremely Fine Gem, with 2000 P.F. certificate 135.00
- 80 ★ **12c Red, 1879 Issue (PR63).** Original gum, single hinge mark at top, bright color, fresh and Very Fine, with 2001 P.S.E. certificate 500.00



81

- 81 ★★ **36c Red, 1879 Issue (PR65).** Mint N.H., beautifully balanced margins and choice centering, marvelous fresh color

EXTREMELY FINE. AN EXCEPTIONALLY RARE MINT NEVER-HINGED EXAMPLE OF THE 36-CENT 1879 NEWSPAPER ISSUE WITH OUTSTANDING CENTERING.

The 36c 1879 American Bank Note Co. issue is very rare in Mint N.H. condition. Power Search contains only one other Mint N.H. example of Scott PR65 offered in our sales since 1994, and while it too is a beautiful stamp (ex "Silver Lake"), it is not as well-centered as the stamp offered here. In fact, this XF 90 example is the only graded Mint N.H. stamp in both the P.F. online records and the P.S.E. Population Report.

With 1993 and 2006 P.F. certificates (XF 90). A hinged P.F. XF 90 graded example of this issue realized \$4,000 hammer in our Sale 1206 in 2019. Scott value as hinged. ... 1,000.00



82

- 82 ★ **48c Red, 1879 Issue (PR66).** Original gum, single hinge mark at top, huge margins on three sides and well clear at top, rich color, Very Fine, with 2002 P.F. certificate..... 1,000.00

- 83 ★ **72c Red, 1879 Issue (PR68).** Original gum, lightly hinged, rich color and proof-like impression, outstanding centering with wide and well-proportioned margins

EXTREMELY FINE GEM ORIGINAL-GUM EXAMPLE OF THIS SCARCE NEWSPAPER ISSUE.

Ex "Vineyard" and Inman. With 1991, 2004 and 2016 P.F. certificates (XF 90). This is the highest grade awarded by the P.F. to this issue, with only one equal. By way of comparison, the highest grade in the P.S.E. Population Report for Scott PR68 is Fine 70 — and that is for a NG/RG/D-POG example (meaning not lightly hinged like this stamp)..... 1,500.00



83



84

- 84 ★ **84c Red, 1879 Issue (PR69).** Original gum, small h.r., intense shade and proof-like impression, choice centering and margins

EXTREMELY FINE ORIGINAL-GUM EXAMPLE OF THE 84-CENT 1879 AMERICAN BANK NOTE CO. NEWSPAPER ISSUE.

With 2008 P.S.E. certificate (OGh, XF 90; SMQ \$2,500.00). This is the highest grade awarded to a hinged example of this issue (one Mint N.H. also grades XF 90)..... 1,250.00

- 85 ★ **96c Red, 1879 Issue (PR70).** Original gum, attractive centering and margins, deep rich color, Very Fine, with 2001 P.F. certificate..... 1,250.00



85

- 86 ★ **\$1.92 Brown, 1879 Issue (PR71).** Original gum, lightly hinged, deep shade, excellent centering with well-balanced margins, Extremely Fine, with 2000 P.F. certificate 550.00



86

- 87 ★ **\$3.00 Red Vermilion, 1879 Issue (PR72).** Original gum, lightly hinged, choice centering and margins, vibrant color on fresh paper, Extremely Fine, a lovely stamp, with 2002 P.F. certificate..... 625.00



87

- 88 ★ **\$6.00 Blue, 1879 Issue (PR73).** Original gum, lightly hinged, vibrant color, nicely balanced margins, Extremely Fine, with 2000 P.S.E. certificate 1,050.00



88



89

- 89 ★ **\$9.00 Orange, 1879 Issue (PR74).** Original gum, lightly hinged, vibrant color, gorgeous centering with balanced margins, long and full perforations

EXTREMELY FINE GEM. A STUNNING ORIGINAL-GUM EXAMPLE OF THE \$9.00 1879 NEWSPAPER ISSUE.

With 2012 P.S.E. certificate (OGph, XF-Superb 95; SMQ \$2,300.00). This is the highest grade awarded and it is shared by only one other. 800.00

- 90 ★★ **\$12.00 Yellow Green, 1879 Issue (PR75).** Mint N.H., wide margins and choice centering, deep rich color

EXTREMELY FINE. A REMARKABLY RARE MINT NEVER-HINGED EXAMPLE OF THE \$12.00 1879 AMERICAN BANK NOTE COMPANY NEWSPAPER ISSUE. THIS MAY WELL BE THE FINEST IN EXISTENCE.

Power Search lists only two other singles in Mint N.H. condition, plus a strip of four with two faulty stamps and only Fine centering. The online records of The Philatelic Foundation contain only four singles. The P.S.E. Population Report contains no graded Mint N.H. examples of Scott PR75. The stamp offered here is clearly superior to the few other Mint N.H. examples, by virtue of margin size and balance.

Ex Inman. With 1985, 2007 and 2016 P.F. certificates (XF 90) 850.00



90



91

- 91 ★ **\$24.00 Dark Violet, 1879 Issue (PR76).** Original gum, deep rich color on bright paper, beautifully balanced margins, Extremely Fine, with 1997 P.F. and 2007 P.S.E. certificates (OGh, XF 90; SMQ \$1,400.00), this is the highest grade awarded and it is shared by only two others. 800.00

- 92 ★ **\$36.00 Indian Red, 1879 Issue (PR77).** Original gum, lightly hinged, deep rich color, wide margins and choice centering, Extremely Fine, with 2000 P.F. certificate..... 850.00



92



93

- 93 ★ **\$48.00 Yellow Brown, 1879 Issue (PR78).** Original gum, deep rich color, choice centering with balanced margins top-to-bottom and side-to-side, Very Fine and choice, with 1990 P.S.E. certificate... 900.00

- 94 ★ **\$48.00 Yellow Brown, 1879 Issue (PR78).** Original gum, lightly hinged, rich color, well-balanced margins, Extremely Fine, with 2000 P.F. certificate..... 900.00



94



95

- 95 ★ **\$60.00 Purple, 1879 Issue (PR79).** Original gum, lightly hinged, almost perfectly centered, deep shade and proof-like impression
 EXTREMELY FINE GEM. THE \$60.00 1879 ISSUE IS RARELY FOUND IN THIS CHOICE LIGHTLY HINGED CONDITION.
 With 2001 P.F. certificate 850.00

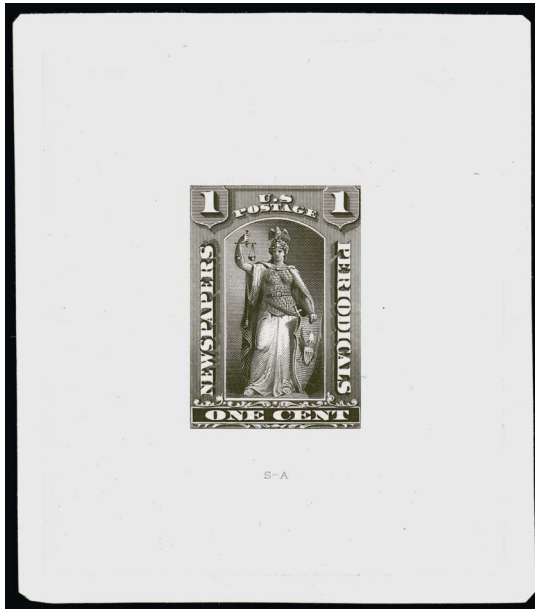
1883 AMERICAN BANK NOTE COMPANY SPECIAL PRINTING



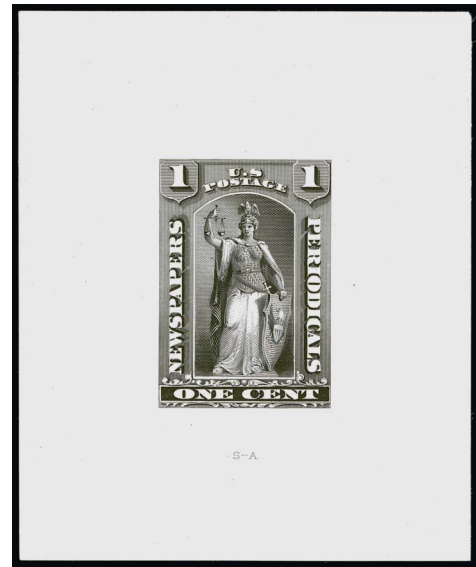
96

- 96 ★ **2c Intense Black, 1883 Special Printing (PR80).** Without gum as issued, intense shade and crisp impression, choice centering with margins which are nicely balanced top-to-bottom and side-to-side
 EXTREMELY FINE. A BEAUTIFUL WIDE-MARGINED EXAMPLE OF THE 2-CENT 1883 NEWSPAPER SPECIAL PRINTING.
 Ex Floyd. With 2000 P.F. certificate 1,750.00

1885 AMERICAN BANK NOTE COMPANY ISSUE ESSAYS

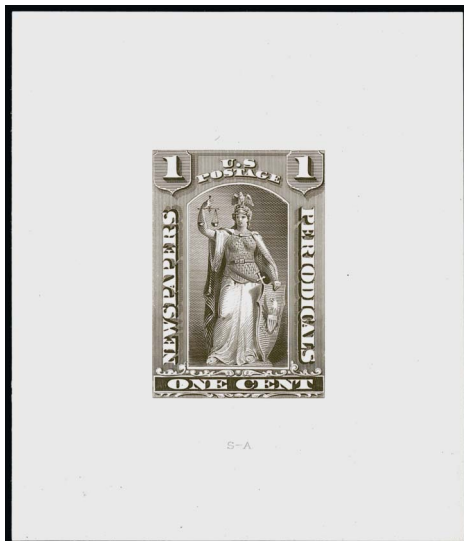


97

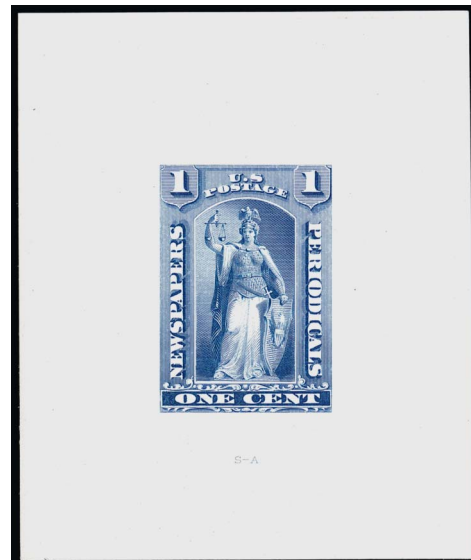


98

- 97 E **1c Black, 1885 American Bank Note Co. Issue, Die Essay on India (PR81-E1a).** Die sunk on 73 x 84mm card, sized just outside the die sinkage area, "S-A" imprint at bottom, fresh and Very Fine, a scarce die essay, with 2010 P.F. certificate, this essay and the examples in the following three lots depict the design of the 12c-96c 1885 Issue, but with the 1c denomination 1,000.00
- 98 E **1c Black, 1885 American Bank Note Co. Issue, Die Essay on White Ivory Paper (PR81-E1b).** 65 x 78mm, "S-A" imprint at bottom, Very Fine and scarce, with 2010 P.F. certificate..... 600.00



99



100

- 99 E **1c Black Brown, 1885 American Bank Note Co. Issue, Die Essay on White Ivory Paper (PR81-E1b).** 65 x 75mm, "S-A" imprint at bottom, Very Fine and scarce, with 2010 P.F. certificate 600.00
- 100 E **1c Blue, 1885 American Bank Note Co. Issue, Die Essay on White Ivory Paper (PR81-E1b).** 65 x 78mm, "S-A" imprint at bottom, Very Fine and scarce, with 2010 P.F. certificate 600.00

1885 AMERICAN BANK NOTE COMPANY ISSUE STAMPS



101



102



103

- 101 ★ **1c Intense Black, 1885 Issue (PR81 var).** Original gum, accompanying certificate states Mint N.H. but we detect light hinging, well-centered on bright white paper, Extremely Fine, a beautiful stamp in this elusive shade, with 2001 P.F. certificate stating Mint N.H. 95.00
- 102 ★ **12c Carmine, 1885 Issue (PR82).** Original gum, single hinge mark at top, vivid color, wide and balanced margins, Extremely Fine, with 2001 P.F. certificate 200.00
- 103 ★★ **24c Carmine, 1885 Issue (PR83).** Mint N.H., brilliant color, choice centering with wide margins, Extremely Fine Gem, a beautiful stamp and very rare in Mint N.H. condition with such superb centering, we have offered only one somewhat comparable example in thirty years, in our 2004 sale of the "Vineyard" collection, though that stamp was not quite as well centered as this example, ex "Silver Lake", with 1997 P.F. certificate..... 500.00



104



105



106

- 104 ★ **36c Carmine, 1885 Issue (PR84).** Original gum, single hinge mark at top, vivid color, Very Fine and choice, with 2000 P.F. certificate 350.00
- 105 ★ **48c Carmine, 1885 Issue (PR85).** Original gum, deep rich color, beautifully centered with balanced margins, Extremely Fine, with 2002 P.F. certificate 425.00
- 106 ★ **60c Carmine, 1885 Issue (PR86).** Original gum, vivid color, wide margins, Very Fine and choice, with 2001 P.S.E. certificate..... 600.00

- 107 ★ **60c Carmine, 1885 Issue (PR86).** Horizontal pair with full **top imprint selvage**, original gum, exceptionally well-centered, beautiful color, Very Fine and choice, ex Schwenk, with 2006 and 2014 P.F. certificates, Scott value for two singles without premium for the imprint..... 1,200.00



107



108



109



110

- 108 ★ **72c Carmine, 1885 Issue (PR87).** Original gum, lightly hinged, choice balanced margins, rich color, Extremely Fine, with 2001 P.F. and 2008 P.S.E. certificates (XF 90; SMQ \$1,150.00), this is the highest grade awarded and it is shared by only one other 600.00
- 109 ★ **84c Carmine, 1885 Issue (PR88).** Original gum, vivid color, well-centered, Very Fine and choice, with 2001 P.S.E. certificate 900.00
- 110 ★★ **96c Carmine, 1885 Issue (PR89).** Mint N.H., gorgeous color on fresh paper, wide margins and outstanding centering
EXTREMELY FINE MINT NEVER-HINGED EXAMPLE OF THE 96-CENT 1885 NEWSPAPER ISSUE WITH WIDE MARGINS AND CHOICE CENTERING.
With 2000 P.F. certificate..... 1,750.00

1894 UNWATERMARKED BUREAU ISSUE



111

- 111 ★ **1c Intense Black, 1894 Issue (PR90).** Original gum, lightly hinged, wide margins and choice centering, Extremely Fine, with 2001 P.F. and 2007 P.S.E. certificates 400.00

- 112 ★ **2c Intense Black, 1894 Issue (PR91).** Original gum, lightly hinged, intense shade and clear impression, wide and balanced margins, Extremely Fine, with 2001 P.F. certificate..... 450.00



112



113

- 113 ★ **4c Intense Black, 1894 Issue (PR92).** Original gum, lightly hinged, proof-like impression and choice centering, Extremely Fine Gem, with 2002 P.F. certificate 550.00

- 114 ★ **10c Intense Black, 1894 Issue (PR94).** Original gum, lightly hinged with pencil Scott number, sharp impression on bright paper, attractive centering and margins, Very Fine and choice, with 2001 P.F. certificate..... 1,300.00



114



115

- 115 ★ **12c Pink, 1894 Issue (PR95).** Original gum, lightly hinged, with **part imprint bottom selvage**, vivid color, a few perf separations in selvage, Very Fine and attractive, with 1998 P.S.E. certificate..... 2,400.00

- 116 ★ **24c Pink, 1894 Issue (PR96).** Original gum, lightly hinged, brilliant color and beautiful centering

EXTREMELY FINE ORIGINAL-GUM EXAMPLE OF THE 1894 24-CENT UNWATERMARKED BUREAU NEWSPAPER ISSUE.

The 1894 Bureau printing was made from the old plates of the American and Continental Bank Note Companies. The plates were re-entered, and there are also other differences in the printings, including the paper and gum. This issue was not in service for very long before the new plates were ready for the Bureau-produced issue of 1895. The high-denomination 1894 issues are rare and often plagued with poor centering and faults. This sound and centered example is a wonderful exception.

With 2001 P.F. certificate 3,750.00



116



117

117 ★★田 24c Pink, 1894 Issue (PR96). Block of four with **bottom imprint selvage**, original gum, we conservatively described this as lightly hinged in two previous offerings but the P.F. certificate obtained after it last sold states **Mint N.H.**, brilliant color, right stamps with a small natural gum crease, bottom stamps trivial natural inclusions

FINE. AN EXTREMELY RARE MINT NEVER-HINGED IMPRINT BLOCK OF FOUR OF THE 1894 24-CENT UNWATERMARKED BUREAU NEWSPAPER ISSUE.

As this marvelous position multiple shows, the 1894 Bureau printing was made from the old plates of the American and Continental Bank Note Companies. The plates were re-entered, and there are also other differences in the printings, including the paper and gum. This issue was not in service for very long before the new plates were ready for the Bureau-produced issue of 1895.

Ex "Whitpain" and Schwenk. With 2014 P.F. certificate stating Mint N.H. Scott value as four Mint N.H. singles without premium for the imprint. 30,000.00



118

- 118 ★ **60c Pink, 1894 Issue (PR98).** Original gum, h.r., radiant color, better centering than normally seen on this difficult issue, small thin spot

VERY FINE APPEARANCE. AN EXTREMELY RARE ORIGINAL-GUM EXAMPLE OF THE 60-CENT 1894 UNWATERMARKED BUREAU NEWSPAPER ISSUE — ONE OF THE RAREST OF ALL NEWSPAPER STAMPS. ONLY 19 UNUSED EXAMPLES ARE AVAILABLE TO COLLECTORS.

Our census of PR98, available at <https://siegelauctions.com/census/us/scott/PR98>, contains 20 unused and 6 used examples, including one unused and one used in the Miller collection owned by The New York Public Library. Of the unused examples available to collectors, only three are confirmed as sound. The three sound copies include one straight edge at top, and all three have perfs in on one side. Centering on examples with faults also tends to be poor. The example offered here, with superior centering and a small fault, is highly desirable.

Census no. PR98-OG-02. Ex Schwenk. With 1991 and 2014 P.F. certificates... 40,000.00



\$6.00 PALE BLUE, 1894 ISSUE, SCOTT PR101
ONE OF THREE AVAILABLE SOUND EXAMPLES WITH ORIGINAL GUM

119 ★ \$6.00 Pale Blue, 1894 Issue (PR101). Original gum, lightly hinged, radiant color, completely sound

VERY FINE. AN INCREDIBLY RARE SOUND ORIGINAL-GUM EXAMPLE OF THE \$6.00 1894 UNWATERMARKED BUREAU ISSUE. ONLY 13 UNUSED EXAMPLES ARE AVAILABLE TO COLLECTORS, INCLUDING SIX WITH GUM. THIS IS ONE OF THREE AVAILABLE SOUND EXAMPLES WITH ORIGINAL GUM. A PHENOMENAL RARITY.

Our census of PR101, available at <https://siegelauctions.com/census/us/scott/PR101>, contains 14 unused and two used examples, including one in the Miller collection owned by The New York Public Library. Of these, only six have original gum. Three original-gum examples have faults, including a repair, reperforating and thins. Only three original-gum stamps are sound — the ex-Inman copy (Sale 1131, lot 2597, census no. 03), the ex-Petersen copy (Sale 1234, lot 526, census no. 12) and the ex-Cole copy, the example offered here (census no. 04). Four stamps without gum are also reported to be sound, but one has a straight edge.

Census no. PR101-OG-04. Ex Cole and from our 1990 Rarities sale. With 1988, 2002 and 2011 P.F. certificates..... 50,000.00

1895 BUREAU ISSUE ESSAYS



120EX



121

- 120 P **1c-10c 1895 Issue, Large Die Proofs on India (PR102P1-PR105P1).** Four values printed on India and die sunk on approximately 152 x 201mm cards, fresh and Very Fine.....
(Photo Ex/Website PDF) 500.00

Lots 121-123 are extremely rare progressive die essays produced by the Bureau of Engraving and Printing

- 121 E **(25c) Black, 1895 Bureau of Engraving and Printing Issue, Die Essay on India (PR106-E1).** Die sunk on 83 x 103mm card, intense shade, Very Fine, this extremely rare vignette-only essay used a transfer of the Continental Bank Note Co. 72c vignette, which has the same basic design but significant differences from the vignette ultimately used by the Bureau of Engraving and Printing for the PR106 issue, Power Search did not locate another example, with 2010 P.F. certificate 3,000.00



122



123

- 122 E **25c Deep Red, 1895 Bureau of Engraving and Printing Issue, Die Essay on India (PR106-E2).** Die sunk on 66 x 91mm card, vivid color, absolutely fresh and Very Fine, an extremely rare Newspaper essay (or progressive trial color proof), this is the issued design but missing various lines and areas of shading, Power Search did not locate another example, with 2010 P.F. certificate..... 3,000.00
- 123 E **\$20.00 Black, 1895 Bureau of Engraving and Printing Issue, Die Essay on India (PR111-E1).** Die sunk on 84 x 95mm card, sized to just outside the die sinkage area, intense shade, Very Fine, a beautiful and extremely rare Newspaper essay (or progressive trial color proof), this is the issued design but missing significant portions including "Twenty Dollars" at bottom, Power Search did not locate another example, with 2004 P.F. certificate 1,250.00

1895 UNWATERMARKED BUREAU ISSUE STAMPS



124



125

- 124 ★ **1c, 2c Black, 1895 Unwatermarked Issue (PR102-PR103).** Original gum, 1c barely hinged and Extremely Fine, 2c lightly hinged and Very Fine and choice, with 2001 and 2003 P.F. certificates respectively 460.00
- 125 ★★ **5c Black, 1895 Unwatermarked Issue (PR104).** Mint N.H. with **top part imprint selvage**, intense color and impression on bright white paper, Extremely Fine, with 2001 P.F. certificate for an imprint and plate number strip of three 650.00



126



127



128

- 126 ★ **5c Black, 1895 Unwatermarked Issue (PR104).** Original gum, lightly hinged, with **top part imprint selvage**, intense shade, wide margins and near perfect centering, Extremely Fine Gem, with 2004 P.F. certificate 300.00
- 127 ★ **10c Black, 1895 Unwatermarked Issue (PR105).** Original gum, deep shade, gorgeous balanced margins, Extremely Fine Gem, a superb stamp, with 2006 P.S.E. certificate (OGph, XF-Superb 95; SMQ \$1,850.00), this is the highest grade awarded and it is shared by no others 600.00
- 128 ★ **25c Carmine, 1895 Unwatermarked Issue (PR106).** Original gum, wide margins and bright color, fresh and Very Fine, ex Lessin, with 1989 P.F. certificate 750.00



129

- 129 ★ **50c Carmine, 1895 Unwatermarked Issue (PR107).** Original gum, brilliant color, choice centering with wide margins

EXTREMELY FINE ORIGINAL-GUM EXAMPLE OF THE 50-CENT 1895 UNWATERMARKED BUREAU NEWSPAPER ISSUE.

Ex Lessin. With 1987 P.F. certificate. 2,750.00

- 130 ★ **\$2.00 Scarlet, 1895 Unwatermarked Issue (PR108).** Original gum, vivid color and intense impression, gorgeous centering with balanced margins

EXTREMELY FINE ORIGINAL-GUM EXAMPLE OF THE \$2.00 1895 UNWATERMARKED BUREAU ISSUE.

With 2008 P.S.E. certificate 2,250.00



130



131

- 131 ★ **\$5.00 Ultramarine, 1895 Unwatermarked Issue (PR109).** Original gum, lightly hinged, beautiful powder blue shade on bright paper, wide margins and choice centering

EXTREMELY FINE ORIGINAL-GUM EXAMPLE OF THE \$5.00 1895 NEWSPAPER ISSUE. THIS IS ONE OF THE RAREST REGULAR-ISSUE NEWSPAPER STAMPS IN SOUND, CENTERED, ORIGINAL-GUM CONDITION.

From our 2002 Rarities sale. With 2002 P.F. certificate 2,100.00



132

- 132 ★ **\$10.00 Green, 1895 Unwatermarked Issue (PR110).** Original gum, lightly hinged, rich color, well-balanced and wide margins, long and full perforations

EXTREMELY FINE. POSSIBLY THE FINEST ORIGINAL-GUM EXAMPLE OF THE \$10.00 1895 UNWATERMARKED BUREAU ISSUE IN EXISTENCE.

A Power Search review shows we have never offered a Mint N.H. example of Scott PR110 since keeping computerized records. None are contained in the online records of The Philatelic Foundation. It may not exist as a Mint N.H. stamp. Most hinged examples tend to have faults or are off-center. The stamp offered here, in lightly hinged condition with gum covering the entire back of the stamp, and with such choice centering, is truly remarkable.

Ex Inman. With 1989, 2004 and 2016 P.F. certificates (XF 90 XQ). The "XQ" denotes "Extraordinary Quality". This is one of only two examples in the P.F. online records at this grade. By way of comparison, the P.S.E. Population Report contains no graded examples of this issue in the "og" category..... 2,500.00



133

- 133 ★ **\$20.00 Slate, 1895 Unwatermarked Issue (PR111).** Original gum, deep rich color and proof-like impression, outstanding centering with especially wide margins

EXTREMELY FINE GEM. A SUPERB ORIGINAL-GUM EXAMPLE OF THE \$20.00 1895 UNWATERMARKED NEWSPAPER ISSUE.

No examples of Scott PR111 have been certified by The Philatelic Foundation in Mint N.H. condition and the Scott Catalogue has removed the Mint N.H. price. Therefore, collectors of Gem stamps seeking this issue would be wise to consider this superb hinged example, which has the widest margins and finest centering of any listed in Power Search.

With 2001 P.F. certificate..... 3,250.00



134

- 134 ★ **\$50.00 Dull Rose, 1895 Unwatermarked Issue (PR112).** Original gum, radiant color and detailed impression on bright paper, choice margins and centering

EXTREMELY FINE. A BEAUTIFUL ORIGINAL-GUM EXAMPLE OF THE \$50.00 1895 UNWATERMARKED BUREAU ISSUE.

Ex Weisman. With 1992 P.F. certificate and 2008 P.S.E. certificates 2,750.00



135

- 135 ★ **\$100.00 Purple, 1895 Unwatermarked Issue (PR113).** Original gum, incredibly deep rich color on bright paper, wide margins and well-centered

EXTREMELY FINE. A SUPERB ORIGINAL-GUM EXAMPLE OF THE \$100.00 1895 UNWATERMARKED BUREAU ISSUE.

A Review of Power Search and the online records of The Philatelic Foundation did not find any in Mint N.H. condition, and the Scott Catalogue appropriately removed its price for Mint N.H. This is one of the finest we have ever encountered and has margins and centering similar to the example we offered in our 2016 sale of the Inman collection.

With 1990 and 2003 P.F. certificates 3,500.00

1895 WATERMARKED BUREAU ISSUE



- 136 ★★ **1c-\$100.00 1895 Watermarked Issue (PR114-PR125).** Complete set plus three extras (1c, 2c, 5c), original gum, the vast majority Mint N.H., just about three previously hinged, deep rich colors, chosen for choice centering and fresh condition, Extremely Fine set, two certificates accompany including P.S.E. XF-Superb 95 grade for No. PR117 (Photo Ex/Website PDF) 797.50
- 137 ★★ **10c, \$20.00 Black, 1895 Watermarked Issue (PR117, PR123).** Two Mint N.H. top imprint, plate no. and arrow strips of four, 10c plate no. 105, \$20.00 plate no. 139, both with choice centering, fresh and Extremely Fine, Scott value as singles without premium for the positions (Photo Ex) 550.00
- 138 ★★ **\$2.00 Scarlet, 1895 Watermarked Issue (PR120).** Mint N.H., brilliant color, beautifully balanced margins, Extremely Fine Gem, with 2004 P.F. certificate for a block of six (bottom right stamp) 75.00
- 139 ★★ **\$50.00 Dull Rose, 1895 Watermarked Issue (PR124).** Mint N.H., fiery color on bright white paper, beautifully centered, Extremely Fine, with 2002 P.F. certificate 170.00
- 140 ★★ **\$100.00 Purple, 1895 Watermarked Issue (PR125).** Mint N.H., deep rich color and proof-like impression, excellent centering with Jumbo margins, Extremely Fine, with 2007 P.S.E. certificate (XF 90 Jumbo; SMQ \$450.00) 150.00
- 141 ★★ **\$100.00 Purple, 1895 Watermarked Issue (PR125).** Mint N.H., bright color, well-centered with wide margins, Extremely Fine 150.00

END OF SALE — THANK YOU

Live and Absentee Internet Bidding at Siegel

**ALL INTERNET BIDDING IS NOW HANDLED DIRECTLY FROM THE SIEGEL WEBSITE
SALES ARE NO LONGER LISTED ON STAMP AUCTION NETWORK**

**REGISTERED BIDDERS MAY LEAVE BIDS IN ADVANCE OF THE SALE
AND BID LIVE DURING THE AUCTION**

DOWNLOAD THE SIEGEL APP FROM THE APPLE OR GOOGLE PLAY STORES

This step-by-step guide will instruct you how to register and use the bidding interface.

Start by following the simple steps to become a registered internet bidder.

Once you have been approved for bidding, you can leave bids in advance of the sale, listen to the auction and place bids live with the click of a mouse.

Registering with Siegel Auction Galleries

To bid, you must be registered and approved by Siegel.

To decide what you need to do, choose the description below that best fits you.



**I've already registered with Siegel and
have been approved by Siegel for internet bidding**

Internet bidding works by allowing registered bidders to observe and place bids, either before the sale or in real-time during the auction.

Live Internet Bidding will work with any browser on both PC and Mac operating systems, or with our app..

Before bidding by internet for the first time, we recommend observing an auction in progress. This will help you develop a feel for the sale tempo and bidding interface.

I'm a Siegel client, but I'm not registered to bid live

Go to bid.siegelauctions.com and click on **Login** at the top. Then click on the link for **Sign Up Now**. We will match your new signup to your existing account.

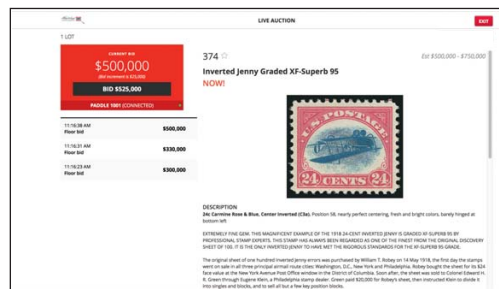
Log in and participate in the auction at bid.siegelauctions.com

When you're logged on as an internet bidder, the bidding interface shows a photo and description of the lot, the current bid (and your bidding status), options for placing competitive bids and buttons with bid increments.

- After you click on a bid amount, the auctioneer is immediately notified of your bid.
- Retracting a bid is not acceptable, so please bid carefully.
- You can track prior realizations from the bidding screen.

I want to become a Siegel client and bid in auctions

Go to bid.siegelauctions.com and click on **Login** at the top. Then click on the link for **Sign Up Now**. You will need to register and provide trade and banking references.



"System Down" or "Lost Connection" events do occasionally happen.

If you have any problems with Live Internet Bidding please call 212-753-6421 for immediate assistance.



BIDS

Use this form to submit absentee bids
or to confirm telephone bids

Sale 1249

March 1, 2022

PADDLE #

1

Please provide the following information:

NAME

ADDRESS

CITY/STATE/ZIP

PHONE MOBILE

EMAIL

2

Have you purchased from us in the past 5 years? ☐ Yes (please go to Section 3)
☐ No (references required below)

STAMP FIRM PHONE

STAMP FIRM PHONE

Please submit references at least **2 business days** before the sale. Bids from new clients will not be executed if satisfactory references are not received in time to be contacted.

3

- Enter the lot number and your corresponding maximum bid in the space below
- Use whole dollar amounts and bid according to the increments (see back of form)
- Bids do not include the **18% Buyer's Premium**, taxes, duty or shipping charges
- Absentee bids will advance at one increment over the next highest competing bid
- "Plus", "Break Tie" or "Buy" bids will not be executed
- Indicate any "Or" bids between lot number/bid entries and bracket your choices
- If you wish to limit the total amount of your bids, follow the instructions below

Lot #	Bid \$	Lot #	Bid \$	Lot #	Bid \$

☐ **Limit Bids:** Check this box if you wish to limit the total hammer price of your bids (excluding 18% Buyer's Premium, taxes, duty and shipping costs). Your bids will be executed until your bidding limit has been reached. The total amount you wish to bid is \$

4

By signing this form, you agree to all of the Conditions of Sale printed in the sale catalogue (printed and digital), including but not limited to a) payment in the manner demanded by the Siegel firm, and b) payment of the 18% Buyer's Premium, any sales tax or customs duty, shipping costs, late charges and

other prescribed charges. You agree that your bids will be executed as a courtesy by Siegel, but you waive the right to make any claim against Siegel or its employees arising from these bids or your participation in the sale. You agree to honor all bids as submitted, regardless of any errors or omissions.

SIGNED DATE

Mail the signed form to Siegel Bid Department, 6 West 48th St., 9th Floor, New York, NY 10036
or email to stamps@siegelauctions.com

Additional Bids

Sale 1249

March 1, 2022

PADDLE #

Lot #	Bid \$	Lot #	Bid \$	Lot #	Bid \$

Shipping & Insurance

We will be pleased to arrange for shipping and transit insurance for purchases in this sale, except for lots marked or announced as "floor sale only." To expedite billing and delivery to hundreds of buyers in each sale, we use standard charges for postage and insurance under our policy. These charges are based on the package weight and mailing requirements, according to the schedule shown here. Our standard charges do not include a fee for our services, and they may be slightly more or less than the actual postage or Fedex fee. We ask all buyers to remit the invoiced amount for shipping and insurance.

Transit insurance is provided in all cases, except when the buyer has furnished us with documentation that insurance is effective under the buyer's own policy.

There will be no added insurance charge for shipments of less than \$75,000 value. Shipments valued in excess of \$75,000 may require supplemental insurance and/or special courier service, the estimated cost of which will be furnished to the buyer prior to shipment. If the buyer refuses to pay the estimated charges or furnish proof of self-insured coverage, the buyer will be responsible for picking up the lots at our office and any resulting sales tax.

Bidding Increments

The auctioneer may regulate the bidding at his discretion. However, to assist absentee bidders in establishing their maximum bids, the increments shown here will be used in most cases. We recommend that written bids conform to these increments—bids that do not will be reduced accordingly.

Standard Shipping Charges

Weight Class	Shipping Method	Charge
Up to 2 lbs.	Fedex Envelope	\$25
Over 2 lbs.	Fedex Box	\$35 - \$50*
Outside US	Fedex	\$50 - \$100**
Bulky Lots	Fedex Ground or Express	By weight
Value under \$500	Priority Mail Env	\$10.00
hammer	Priority Mail Box	\$25 - \$35

* Up to \$75,000 value and up to 5 lbs; additional charge may apply to packages exceeding limits

** Buyers outside United States are liable for any applicable customs duty and clearance charges. An accurate declaration of contents and value will be made on all packages and import/export documents. **Siegel may refuse to ship lots to certain countries with a high risk factor.**

2/2021

Bid	Increment	Bid	Increment
Up to \$200	\$10	\$20,000-30,000	\$1,000
\$200-500	\$25	\$30,000-70,000	\$2,500
\$500-1,000	\$50	\$70,000-140,000	\$5,000
\$1,000-3,000	\$100	\$140,000-500,000	\$10,000
\$3,000-7,000	\$250	\$500,000-\$1m	\$25,000
\$7,000-20,000	\$500	Above \$1m	Discretionary