



## **The Great Point Collection of United States Stamps**



**Sale 1256 | Wednesday, June 8, 2022**

**SIEGEL AUCTION GALLERIES**

*Robert A. Siegel*



## The Great Point Collection of United States Stamps



### SALE 1256

Offered at unreserved public auction on behalf of the collector's heirs

**WEDNESDAY JUNE 8, 2022**

Session One	10:30 a.m.	lots 2001-2102	Scott 1 to 166
Session Two	1:30 p.m.	lots 2103-2292	Scott 167 to Groups

Attendance is now permitted for fully vaccinated individuals and for unvaccinated individuals who follow all guidelines to prevent the spread of COVID-19

All lots sold subject to 18% buyer's premium and applicable sales tax or customs duty

Please carefully read the Conditions of Sale before bidding

Presale viewing by appointment only, subject to COVID-19 rules

## ROBERT A. SIEGEL AUCTION GALLERIES, INC.

6 West 48th Street, 9th Floor, New York, N.Y. 10036

Phone (212) 753-6421 • Email: [stamps@siegelauctions.com](mailto:stamps@siegelauctions.com)

Catalogues, internet bidding, resources, archives and the Siegel Encyclopedia at  
[siegelauctions.com](http://siegelauctions.com)





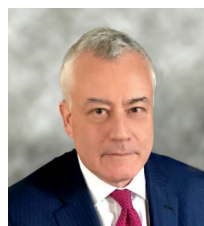
*Robert A. Siegel*

AUCTION GALLERIES, INC.

6 WEST 48TH STREET, 9TH FLOOR, NEW YORK, N.Y. 10036

Phone (212) 753-6421 • Email: [stamps@siegelauctions.com](mailto:stamps@siegelauctions.com)

[siegelauctions.com](http://siegelauctions.com)



Scott R. Trepel  
President  
strepel  
@siegelauctions.com



John P. Zuckerman  
Senior Vice President  
jzuckerman  
@siegelauctions.com



Corey Long  
Senior Vice President  
clong  
@siegelauctions.com



Samantha Aragon  
VP, Financial  
samantha  
@siegelauctions.com



Gina Cashia  
VP, Operations  
gina  
@siegelauctions.com



Andrea Moreno  
Operations  
andrea  
@siegelauctions.com

Siegel International  
Dallas (214) 754-5991



Charles F. Shreve  
Director, Siegel International  
charles  
@siegelauctions.com



Andrew Titley  
VP, Siegel International  
andrew  
@siegelauctions.com



Chris Anderson  
International Specialist  
chris  
@siegelauctions.com

Scott R. Trepel Principal Auctioneer (licensed by NYC Dept. of Consumer Affairs, #795952)

## Information for Bidders

### Bidding

The following means are available for placing bids:

- 1) **Public Attendance:** Attendance is now permitted for fully vaccinated individuals and for unvaccinated individuals who follow all guidelines to prevent the spread of COVID-19. Live bidding will also be facilitated by mail, email, phone or internet.
- 2) **Live Internet Bidding:** Instructions for participating as a Live Internet Bidder are provided on the page opposite.
- 3) **Phone Bidding:** Bidders can be connected to the sale by phone and bid through a member of staff. Requests for phone bidding are subject to approval (please contact our office at least 24 hours before the sale). A signed Bid Form is required.
- 4) **Absentee Bids:** All bids received in advance of the sale, either by mail, fax, phone, email or internet, are Absentee Bids, which instruct the auctioneer to bid up to a specific amount on one or more lots in the sale. Absentee Bids sent by phone, fax or email should arrive at least one hour prior to the start of the sale session. Bids entered through Live Internet Bidding will be visible to the auctioneer during the sale. Written bids should be entered legibly on the Bid Form in the sale catalogue. Email and internet bids should be carefully typed and double-checked. All new bidders must provide references.

### Presale Viewing by Appointment Only

To prevent the spread of COVID-19, presale viewing will be permitted for fully vaccinated individuals or for unvaccinated individuals who agree to follow all protective measures. To make an appointment and receive instructions, please contact us at (212) 753-6421 or by email. We reserve the right to refuse, cancel or postpone a request or appointment.

### Expert Certification

Individual items offered without a PF or PSE certificate dated within the past 5 years may be purchased subject to certification of genuineness and our description. **Please refer to the Conditions of Sale and Grading Terms for policies governing certification.**

### Shipping and Delivery

Procedures and charges for shipping lots are printed on the back of the Bid Form. **Bidders are responsible for all prescribed shipping charges and any applicable sales tax or customs duties.**

### Price Realized

Prices realized are sent with each invoice. Bidders with email will receive a Bid Results report after the sale. Session results are posted immediately to [siegelauctions.com](http://siegelauctions.com)

**If you have any problems with Live Internet Bidding please call 212-753-6421 for immediate assistance.**



## Conditions of Sale (please read carefully before bidding)

**THE PROPERTY IN THIS CATALOGUE WILL BE OFFERED AT PUBLIC AUCTION BY ROBERT A. SIEGEL AUCTION GALLERIES, INC. ("GALLERIES") ON BEHALF OF VARIOUS CONSIGNORS AND ITSELF OR AFFILIATED COMPANIES. BY BIDDING ON ANY LOT, WHETHER DIRECTLY OR THROUGH A THIRD PARTY, IN PERSON, BY TELEPHONE, FACSIMILE, INTERNET OR BY ANY OTHER MEANS, THE BIDDER ACKNOWLEDGES AND AGREES TO ALL OF THE FOLLOWING CONDITIONS OF SALE.**

1. The highest bidder acknowledged by the auctioneer shall be the buyer. The term "final bid" means the last bid acknowledged by the auctioneer, which is normally the highest bid offered. **The purchase price payable by the buyer will be the sum of the final bid and a commission of 18% of the final bid ("buyer's premium"), together with any sales tax, use tax or customs duties due on the sale.**

2. The auctioneer has the right to reject any bid, to advance the bidding at his discretion and, in the event of a dispute, to determine the successful bidder, to continue the bidding or to reoffer and resell the lot in dispute. The Galleries' record of the final sale shall be conclusive.

3. All bids are per numbered lot in the catalogue unless otherwise announced by the auctioneer at the time of sale. The right is reserved to group two or more lots, to withdraw any lot or lots from the sale, or to act on behalf of the seller. The Galleries will execute bidding instructions on behalf of clients, but will not be responsible for the failure to execute such bids or for any errors in the execution of such bids.

4. **Lots with numbers followed by the symbol ° are offered subject to a confidential minimum bid ("reserve"), below which the lot will not be sold. The absence of the symbol ° means that the lot is offered without a reserve. If there is no reserve, the auctioneer has sole discretion to establish a minimum opening bid and may refuse an offer of less than half of the published estimate. Any lot that does not reach its reserve or opening bid requested by the auctioneer will be announced as "passed" and excluded from the prices realized lists after the sale. The Galleries may have a direct or indirect ownership interest in any or all lots in the sale resulting from an advance of monies or goods-in-trade or a guarantee of minimum net proceeds made by the Galleries to the seller.**

5. Subject to the exclusions listed in 5(A), the Galleries will accept the return of lots which, subject to the Galleries' sole judgment, have been misidentified or which have obvious faults that were present when the lot was in the Galleries' custody, but not so noted in the lot description. **All disputed lots must be received by the Galleries intact with the original packing material within 5 days of delivery to the buyer but no later than 30 days from the sale date. (5A) EXCLUSIONS:** The following lots may not be returned for any reason, or may not be returned for the reasons stated: (i) lots containing 5 or more items; (ii) lots from buyers who registered for the pre-sale exhibition or received lots by postal viewing, thereby having had the opportunity to inspect them before the sale; (iii) any lot described with "faults," "defects" or a specific fault may not be returned because of any secondary fault; (iv) photographed lots may not be returned because of centering, margins, short/nibbed perforations or other factors shown in the photos; (v) the color of the item does not match the color photo in the sale catalogue or website listing; (vi) the description contains inaccurate information about the quantity known or reported; or (vii) a certification service grades a stamp lower than the grade stated in the description or on an accompanying certificate.

6. Successful bidders, unless they have established credit with the Galleries prior to the sale, must make full payment in cleared funds before the lots will be delivered. Buyers not known to the Galleries must make payment in full within 3 days from the date of sale. **The Galleries retains the right to demand a cash deposit from anyone prior to bidder registration and/or to demand payment at the time the lot is knocked down, for any reason whatsoever.** In the event that any buyer refuses or fails to make payment in cash for any lot at the time it is knocked down to him, the auctioneer reserves the right to reoffer the lot immediately for sale to the highest bidder. **Credit cards (Visa, Mastercard and Discover only) can be accepted as payment, but will be subject to a 3% non-refundable Convenience Fee, which will be added to the total of the entire invoice (including hammer price, buyer's premium, shipping and transit insurance charges and any applicable taxes). The buyer waives the right to dispute all credit card charges.**

7. If the purchase price has not been paid within the time limit specified above, nor lots taken up within 7 days from the date of sale, the lots may be resold by whatever means deemed appropriate by the Galleries, and any loss incurred from resale will be charged to the defaulting buyer, and/or the Galleries may seek any other remedy prescribed by law to enforce payment. **Any account more than 30 days in arrears will be subject to a late payment charge of 1½% per month as long as the account remains in arrears. Any expenses incurred in securing payment from delinquent accounts will be charged to the defaulter.** A fee of \$250.00 will be charged for a check returned for insufficient funds.

8. All lots are sold as genuine. **Any lot accompanied by a certificate issued by The Philatelic Foundation or by Professional Stamp Experts within 5 years of the sale date is sold "as is" and in accordance with the description on the certificate. Such lots may not be returned for any reason, including but not limited to a contrary certificate of opinion or change in grade.** Buyers may request a certificate for a lot containing not more than one item, which does not have a P.F. or P.S.E. certificate (dated as above), provided that the following conditions are met: (i) the purchase price must be paid in full, (ii) if submitted by the buyer, the lot must be submitted to an acceptable expertizing service with a properly executed application form within 21 days of the sale, (iii) a copy of the application form must be given to the Galleries, (iv) the Galleries retains the right to resubmit the item for reconsideration, without time limit or other restrictions, for the purpose of obtaining a satisfactory opinion, (v) lots submitted for certification will be considered cleared 90 days from the date of sale, whether or not a certificate has been issued, unless the Galleries issues written approval of a further extension of return privileges, and (vi) in the event the lot is determined to be misidentified or misdescribed, pursuant to 5 and 5(A) of these Conditions, the Galleries will issue a refund to the buyer for the full purchase price and actual certification fees, but the reimbursement for certificate fees (and related costs) shall not exceed 10% of the hammer price of the lot. **Changes to a grade by the same certification service or a different grade from another certification service are not grounds for returning a lot.**

9. Until paid for in full, all lots remain the property of the Galleries on behalf of the seller.

10. Agents executing bids on behalf of clients may also be held responsible for all purchases made on behalf of clients, unless otherwise arranged prior to the sale.

11. **The buyer assumes all risk for delivery of purchased lots and agrees to pay for prescribed shipping costs. Buyers who receive lots in the U.S. are obligated to pay whatever sales tax or compensating use tax might be due, at any time, and buyers outside the U.S. are responsible for all customs duties.**

12. **The bidder consents that any action or proceeding against it may be commenced and maintained in any court within the State of New York or in the United States District Court for the Southern District of New York, that the courts of the State of New York and United States District Court for the Southern District of New York shall have jurisdiction with respect to the subject matter hereof and the person of the bidder. The bidder agrees not to assert any defense to any action or proceeding initiated by Galleries based upon improper venue or inconvenient forum. The bidder agrees that any action brought by the bidder shall be commenced and maintained only in a Federal Court in the United States District Court for the Southern District of New York or the State Court in the county in which Galleries has its principal place of business in New York. The bidder agrees not to use a public conflict resolution service and not to use any form of social media to publish comments or information about the Galleries and its employees which might harm the Galleries' reputation or business. These Conditions of Sale shall be governed by and construed in accordance with the substantive laws of the State of New York, and shall constitute an agreement that shall be binding on the parties, and their respective heirs, administrators, distributees, successors and assignees.**

SCOTT R. TREPEL, Principal Auctioneer (NYC License No. 795952)  
N.Y.C. Department of Consumer Affairs  
80 Lafayette Street, New York, N.Y. 10013  
Telephone (212) 577-0111

Revised 9/2018

# Grades, Abbreviations and Values Used in Descriptions

## Grades and Centering

Our descriptions contain detailed information and observations about each item's condition. We have also assigned grades to stamps and covers, which reflect our subjective assessment. For stamps, the margin width, centering and gum are described and graded according to generally-accepted standards (an approximate correlation to numeric grades is provided at right). Although we believe our grades are accurate, they are not always exactly aligned with third-party grading terms or standards for all issues. **A lot may not be returned because a certification service grades a stamp lower than the grade stated in the description. Information from the P.S.E. Stamp Market Quarterly and P.S.E. Population Report<sup>SM</sup> is the most current available, but lots may not be returned due to errors or changes in statistics or data.**

**Extremely Fine Gem (90-100):** The term “Gem” describes condition that is the finest possible for the issue. This term is equivalent to “Superb” used by grading services.

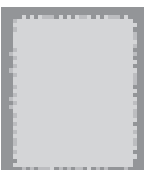

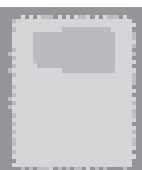
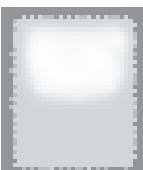
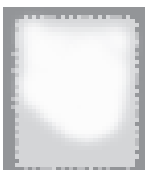
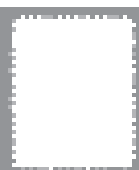
**Extremely Fine (80-90):** Exceptionally large/wide margins or near perfect centering.

**Very Fine (70-85):** Normal-size margins for the issue and well-centered with the design a bit closer to one side. “Very Fine and choice” applies to stamps that have desirable traits such as rich color, sharp impression, freshness or clarity of cancel.

**Fine (60-70):** Smaller than usual margins or noticeably off center. Pre-1890 issues may have the design touched in places.

**Very Good (below 60):** Attractive appearance, but margins or perforations cut into the design.

## Guide to Gum Condition

Gum Categories:	MINT N.H.		ORIGINAL GUM (O.G.)			NO GUM
						
	<b>Mint Never Hinged</b> <i>Free from any disturbance</i>	<b>Lightly Hinged</b> <i>Faint impression of a removed hinge over a small area</i>	<b>Hinge Mark or Remnant</b> <i>Prominent hinged spot with part or all of the hinge remaining</i>	<b>Part o.g.</b> <i>Approximately half or more of the gum intact</i>	<b>Small part o.g.</b> <i>Approximately less than half of the gum intact</i>	<b>No gum</b> <i>Only if issued with gum</i>
Catalogue Symbol:	★ ★	★	★	★	★	(★)
PRE-1890 ISSUES	<i>Pre-1890 stamps in these categories trade at a premium over Scott value</i>			Scott Value for “O.G.”		Scott “No Gum” Values thru No. 218
1890-1935 ISSUES	Scott “Never Hinged” Values for Nos. 219-771	Scott Value for “O.G.” (Actual value will be affected by the degree of hinging)		<b>Disturbed Original Gum:</b> Gum showing noticeable effects of humidity, climate or hinging over more than half of the gum. The significance of gum disturbance in valuing a stamp in any of the Original Gum categories depends on the degree of disturbance, the rarity and normal gum condition of the issue and other variables affecting quality. For example, stamps issued in tropical climates are expected to have some		
1935 TO DATE	Scott Value for “Unused”					

## Covers

Minor nicks, short edge tears, flap tears and slight reduction at one side are normal conditions for 19th century envelopes. Folded letters should be expected to have at least one file fold. Light cleaning of covers and small mends along the edges are accepted forms of conservation. Unusual covers may have a common stamp with a slight crease or tiny tear. **These flaws exist in virtually all 19th century covers and are not always described. They are not grounds for return.**

## Catalogue Values and Estimates

Unless otherwise noted, the currently available *Scott Catalogue* values are quoted in dollars with a decimal point. Other catalogues are often used for foreign countries or specialized areas and are referred to by their common name: *Stanley Gibbons* (SG), *Dietz*, *American Air Mail Catalogue* (AAMC), *Michel*, *Zumstein*, *Facit*, etc. Estimates are indicated with an “E.” and reflect our conservative valuation in dollars. Reserves will never exceed the low end of the estimate range; they will sometimes exceed Scott Catalogue value for stamps in Extremely Fine condition.

Because of certain pricing inconsistencies in the *Scott Catalogue*—for example, blocks that have no gum, the absence of premiums for Mint N.H. items, etc.—we cannot guarantee the accuracy of values quoted for multiples, specialized items and collection lots. We generally try to be conservative, but buyers may not return a lot because of a discrepancy in catalogue value due to Scott pricing inconsistencies.

## Symbols and Abbreviations (see chart above for gum symbols)

⊞	Block	E	Essay	pmk.	Postmark	No.	Scott Catalogue Number
⊞	Cover	P	Proof	cds	Circular Datestamp	hs	Handstamp
FC	Fancy Cancel	TC	Trial Color Proof	var.	Variety	ms.	Manuscript

Revised 1/2012



# Highlights of the plate blocks and cut squares



2145



2179



2158



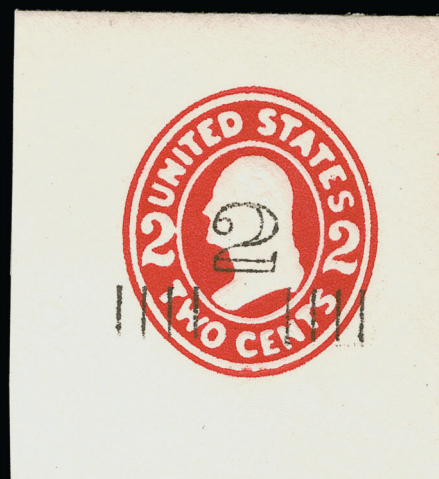
2258



2270



2273



2277



SESSION ONE (LOTS 2001-2102)  
WEDNESDAY, JUNE 8, 2022, AT 10:30 A.M.

THE GREAT POINT COLLECTION OF  
UNITED STATES STAMPS

1847 ISSUE AND 1875 REPRODUCTIONS



2001

- 2001 ★ **5c Red Brown (1).** Original gum, large even margins, dark shade and intermediate impression

EXTREMELY FINE ORIGINAL-GUM EXAMPLE OF THE 5-CENT 1847 ISSUE.

Ex Hall. With 1995 and 2015 P.F. certificates..... 6,000.00

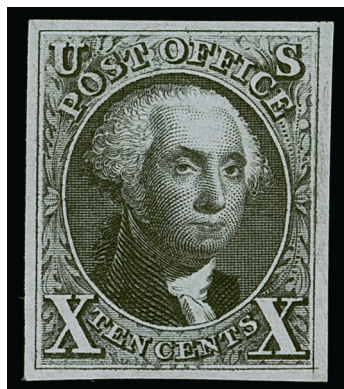
- 2002 ★ **5c Red Brown, Reproduction (3).** Without gum as issued, huge margins, detailed impression

EXTREMELY FINE GEM. A MAGNIFICENT EXAMPLE OF THE 1875 BUREAU OF ENGRAVING & PRINTING REPRODUCTION OF THE 5-CENT 1847 ISSUE, GRADED XF-SUPERB 95 BY P.S.E.

Ex Floyd. With 1990 P.F. and 2008 P.S.E. certificates (XF-Superb 95; SMQ \$2,000.00) ..... 900.00



2002



2003

- 2003 ★ **10c Black, Reproduction (4).** Without gum as issued, large even margins, detailed impression, fresh and Extremely Fine, with 2002 P.F. certificate ..... 1,150.00



## 1851-57 ISSUES



2004



2005

- 2004 ★ **1c Blue, Ty. II (7).** Position 6R2 from the top row of Plate 2, original gum, lightly hinged, deep rich color, large margins including trace of adjoining stamp at bottom, Extremely Fine, a beautiful original-gum example of the 1c 1851 Type II, with 2013 P.S.A.G. and 2016 P.F. certificates (VF-XF 85) ..... 1,000.00
- 2005 ★ **1c Blue, Ty. IV (9).** Recut once at top and bottom, original gum, full margins to barely touched at upper right, rich color, Very Fine and attractive, with 1999 P.F. certificate .... 750.00



2006

- 2006 ★★ **3c Dull Red, Ty. I (11). Mint N.H.,** enormous margins all around including part of five adjoining stamps, brilliant color and detailed impression  
EXTREMELY FINE GEM. A SUPERB MINT NEVER-HINGED EXAMPLE OF THE 1851 3-CENT DULL RED, GRADED SUPERB 98 BY P.S.E.  
Although the 3c 1851 is by no means a rare stamp, there are very few examples in Mint Never-Hinged condition.  
With 2011 P.S.E. certificate (Superb 98; unpriced in SMQ as Mint N.H., SMQ \$2,550.00 as hinged). One other shares this grade and two have graded higher. Scott value \$250.00 as hinged..... E. 3,000-4,000

ONE-CENT BLUE, TYPE I, SCOTT 18  
MINT NEVER-HINGED, GRADED XF-SUPERB 95



2007

2007 ★★ **1c Blue, Ty. I (18).** Plate 12, C Relief, **Mint N.H.**, radiant color and crisp impression, choice centering for this difficult issue with the type characteristics clearly visible

EXTREMELY FINE GEM. THIS IS QUITE PROBABLY THE FINEST MINT NEVER-HINGED EXAMPLE OF THE 1857 PERFORATED ONE-CENT TYPE I, WHICH COMES ONLY FROM PLATE 12. THIS MAGNIFICENT STAMP IS GRADED XF-SUPERB 95 BY P.S.E. — THIS IS THE ONLY GRADED MINT NEVER-HINGED STAMP IN THE P.S.E. POPULATION REPORT, AND THIS IS THE HIGHEST GRADE AWARDED IN ANY CATEGORY.

The defining characteristic of Type I is that the entire design is printed, including the scrolls and plumes at bottom. Among the plates used to print imperforate stamps, only one position out of 1,000 can claim that honor (Position 7R1E, Scott No. 5). Type I perforated stamps are only known from certain positions on Plate 12. Due to the narrow spacing between perforations and difficulties of production, this issue is usually found with part of the design cut off by the perforations. The wide margins of this stamp leave the Type I characteristics around the perimeter almost completely intact.

Ex “Hanover”. With 2007 P.S.E. certificate (XF-Superb 95; unpriced in SMQ in Mint N.H. condition. The highest price in SMQ is for a hinged 90, which is not even remotely relevant.). The highest grade awarded in any category is 95 (eight used plus this N.H. example). We have offered only a half-dozen other Mint N.H. examples since keeping computerized records, and probably none would grade higher than 75 or 80. Scott value \$2,100.00 as hinged ..... E. 7,500-10,000



ONE-CENT BLUE, TYPE II, SCOTT 20  
TOP ROW OF PLATE 11



2008

2008 ★ **1c Blue, Ty. II (20). Top row of Plate 11, T Relief**, original gum, lightly hinged, perfectly centered with wide margins all around, deep rich color and proof-like impression

EXTREMELY FINE GEM. AN EXTRAORDINARY 1857 PERFORATED ONE-CENT STAMP WITH IMMENSE MARGIN WIDTH. SUPERB IN EVERY RESPECT AND WITHOUT QUESTION ONE OF THE FINEST EXAMPLES OF A TYPE II PLATE 11 STAMP IN EXISTENCE.

According to Neinken, Toppan Carpenter produced Plates 11 and 12 in November 1860 to replace plates that had become too worn for use. In laying down the new plates, Toppan Carpenter evidently abandoned the six-relief transfer roll and used two different three-relief rolls. With recent scholarship revising some of the old accepted concepts about 1851-57 plate production, we will go no further in explaining the mechanics of Plate 11, from which this stamp was printed.

Some of the unusual features of Type II stamps from the top row of Plate 11 are seen in this example. The strong horizontal and vertical guidelines and guide dots are visible at the upper right. The enormous margins show the complete T Relief (Type II) characteristics. This relief was used to enter only the top row (20 subjects), and the Neinken book (p. 467) notes, "The design of the T relief was a perfect example of Type II, and in this respect, none of the plates furnished finer examples of this type than those from the top row of Plate 11. They are quite scarce, as the plate was only in use slightly over six months. In addition, each sheet of 200 stamps only furnished 20 of these scarce top row Type II stamps."

Ex "Scarsdale" and "Hanover". With 2002 P.F. certificate. The Scott Catalogue premium for an unused Type II stamp from Plate 11 is insufficient, in our opinion. .... 1,700.00

- 2009 ★ **1c Blue, Ty. IIIa (22).** Plate 12, B Relief, one of the positions with a break in the bottom line and very faint line or possibly a small break in top line, original gum, lightly hinged, well-centered with balanced margins, bright shade, Extremely Fine, a rare 1c 1857 Issue plate variety from the last plate produced for this regular-issue design, ex Hillmer, with 1994 P.F. certificate as No. 22 but incorrectly identifying this as Plate 11, A Relief..... 2,400.00



2009



2010

- 2010 ★ **3c Rose, Ty. I (25).** Original gum, lightly hinged, deep rich color and detailed impression, well-balanced margins for this exceedingly difficult issue with outer framelines visible on all sides

VERY FINE ORIGINAL-GUM EXAMPLE OF THE 3-CENT TYPE I 1857 ISSUE.

With 1998 P.F. certificate ..... 2,750.00

- 2011 ★ **3c Dull Red, Ty. III (26).** Original gum, brilliant color, unusually choice centering, Extremely Fine, with 2006 P.F. certificate (XF-Superb 95) ..... 65.00



2011

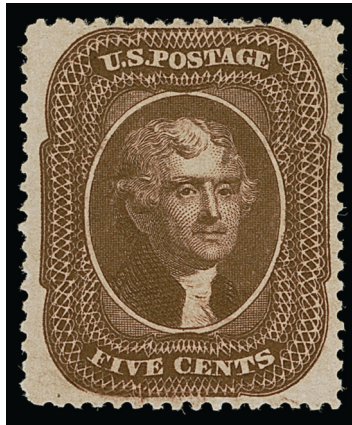


2012

- 2012 ★ **5c Orange Brown, Ty. II (30).** Original gum, lightly hinged, beautiful vibrant color, well-centered with wide margins, Very Fine and choice, scarce in this condition, with 2003 P.F. certificate..... 1,200.00



5-CENT BROWN, TYPE II, SCOTT 30A  
GRADED XF-SUPERB 95



2013

2013 ★ **5c Brown, Ty. II (30A).** Original gum, lightly hinged, deep shade and proof-like impression, gorgeous centering for this difficult issue

EXTREMELY FINE GEM. A SUPERB LIGHTLY HINGED EXAMPLE OF THE 5-CENT TYPE II 1860 ISSUE. THIS STAMP IS GRADED XF-SUPERB 95 — ONLY ONE HAS GRADED HIGHER AND ONLY ONE SHARES THIS DESIRABLE GRADE.

Unlike its Orange Brown counterpart, the 5c Type II in Brown was not on hand in post offices when the 1861 demonetization order took effect. Therefore, original-gum examples of Scott 30A are far scarcer than Scott 30. The narrow spacing between subjects on the plate, as well as Toppan Carpenter's imprecise perforating, leaves collectors with very few well-centered original-gum examples.

With 1996 P.F. and 2005 and 2016 P.S.E. certificates (OGph, XF-Superb 95; SMQ \$11,500.00). Only one unused stamp in any gum condition has graded higher — a single original gum example at 95J last sold by us in 2007. One other shares this grade — it brought \$12,500 hammer in our 2018 Rarities sale. .... 2,250.00

- 2014 ★ **10c Green, Ty. V (35).** Original gum, rich color, wide margins, Very Fine, with 1990 P.F. certificate 210.00

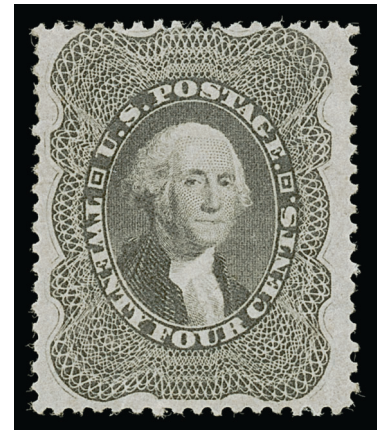


2014



2015

- 2015 ★ **12c Black, Plate 3 (36B).** Original gum, lightly hinged, intense shade and impression on bright paper, better centering than normally seen, fresh and Very Fine, with 1983 and 1999 P.F. certificates ..... 725.00



2016

- 2016 ★ **24c Gray Lilac (37).** Original gum, lightly hinged, crisp shade and impression, fresh and Very Fine, with 2000 P.F. certificate..... 1,450.00



2017

- 2017 ★ **30c Orange (38).** Original gum, radiant color, wide margins, Very Fine, with 1999 P.F. certificate ..... 1,900.00



2018

- 2018 ★ **90c Blue (39).** Original gum, rich color, wide margins  
VERY FINE AND CHOICE ORIGINAL-GUM EXAMPLE OF  
THE 90-CENT 1860 ISSUE.  
With 2000 and 2005 P.F. certificates (VF 80).. 3,000.00





2019

## 1875 REPRINT OF 1857-60 ISSUE

- 2019 ★ **1c Bright Blue, Reprint (40).** Without gum as issued, pretty shade, short perf at left center, otherwise Very Fine ..... 600.00

- 2020 ★ **3c Scarlet, Reprint (41).** Without gum as issued, radiant color

VERY FINE AND CHOICE. A BEAUTIFUL AND REMARKABLY FRESH EXAMPLE OF THE 3-CENT 1857 REPRINT.

The Continental Bank Note Company made a new plate for the 3c 1857 Reprint, consisting of 100 subjects. 10,000 stamps were printed (100 impressions). 479 of the 3c were sold, and the remaining 9,521 were destroyed on July 23, 1884, by order of the Postmaster General.

With 2002 P.F. and 2014 P.S.E. certificates (VF 80; SMQ \$4,250.00) ..... 2,850.00



2020



2021

- 2021 ★ **5c Orange Brown, Reprint (42).** Without gum as issued, radiant color, fresh and Very Fine, only 878 sold, ex Hall, with 1974, 1998 and 2015 P.F. certificates..... 1,200.00

- 2022 ★ **10c Blue Green, Reprint (43).** Without gum as issued, deep rich color on bright paper, Fine, only 516 sold, with 1997 A.P.S. and 2014 P.S.E. certificates .. 2,500.00



2022



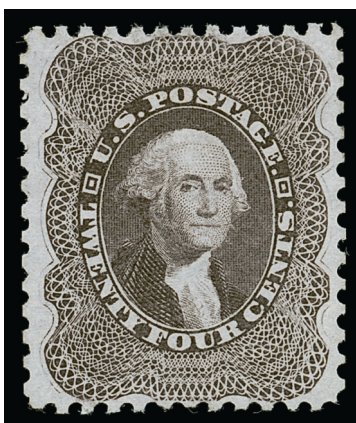
2023

2023 ★ **12c Greenish Black, Reprint (44).** Without gum as issued, intense shade and detailed impression on bright paper, choice centering for this difficult issue

EXTREMELY FINE. A MARVELOUS EXAMPLE OF THE 12-CENT 1857 REPRINT, IN THE FINEST CONDITION ATTAINABLE.

The narrow spaces between stamps on the 12c 1857 Reprint plate allowed almost no room for large 12-gauge perforations, and the Reprints were generally perforated into parts of the design. Only 489 were sold, and examples such as this, with the framelines complete on all four sides, are extremely rare.

Ex "Hanover". With 2002 P.F. and 2005 P.S.E. certificates (XF 90; SMQ \$8,500.00). Only one has graded higher (at 90J) and only three others share this grade. .... 2,750.00



2024

2024 ★ **24c Blackish Violet, Reprint (45).** Without gum as issued, intense shade and impression on bright paper, almost perfectly centered

EXTREMELY FINE. A GORGEOUS EXAMPLE OF THE 24-CENT 1860 REPRINT. THIS IS ONE OF THE FINEST WE HAVE EVER ENCOUNTERED.

The Continental Bank Note Company reprinted the 24c stamp from the original plate of 200 subjects. 10,000 were printed (50 impressions). Only 479 were sold; the remaining 9,521 were destroyed on July 23, 1884, by order of the Postmaster General. Due to the narrow spacing between subjects, many have perforations touching the design at either top or bottom. The example offered here is one of the finest.

Ex "Hanover". With 1992 and 2004 P.F. certificates. .... 3,000.00





2025

- 2025 ★ **30c Yellow Orange, Reprint (46).** Without gum as issued, intense shade and detailed impression, choice centering for this narrowly spaced issue

EXTREMELY FINE GEM. A BEAUTIFUL EXAMPLE OF THE 30-CENT 1860 REPRINT. THIS IS ONE OF THE MOST DIFFICULT VALUES TO OBTAIN WITH SUCH CHOICE CENTERING. THIS IS ONE OF THE FINEST WE HAVE EVER OFFERED.

The Continental Bank Note Company reprinted the 30c stamp from the original plate of 200 subjects. 10,000 were printed (50 impressions). Only 480 were sold; the remaining 9,520 were destroyed on July 23, 1884, by order of the Postmaster General.

Ex "Hanover". With 1972, 1989 and 2005 P.F. certificates ..... 3,000.00



2026

- 2026 ★ **90c Deep Blue, Reprint (47).** Without gum as issued, deep shade and detailed impression, choice centering and margins

VERY FINE AND CHOICE EXAMPLE OF THE 90-CENT 1857 REPRINT.

The Continental Bank Note Company reprinted the 90c stamp from the original plate of 200 subjects. 10,000 were printed (50 impressions). Only 454 were sold; the remaining 9,546 were destroyed on July 23, 1884, by order of the Postmaster General.

With 1979 and 2017 P.F. certificates ..... 3,600.00

## 1861-66 ISSUE

- 2027 ★ **3c Brown Rose, First Design (56).** Original gum, lightly hinged, deep rich color, Very Fine and choice, with 1982 and 2004 P.F. certificates ..... 550.00



2027



2028

- 2028 ★ **3c Pink (64).** Original gum, vivid color, natural vertical gum crease as often with original-gum examples of the 3c Pink, Fine appearance, scarce, with 2001 P.S.E. certificate ..... 14,000.00



2029

- 2029 ★ **3c Lake (66).** Original gum, bright color and detailed impression, Fine and scarce, with 1985 and 2010 P.F. certificates ..... 2,000.00

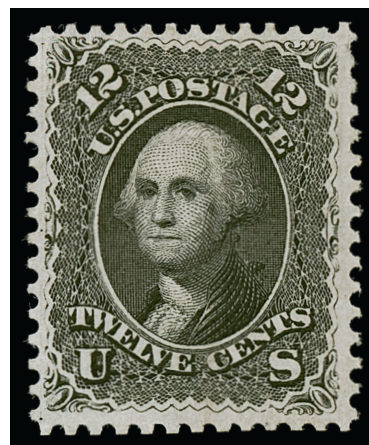




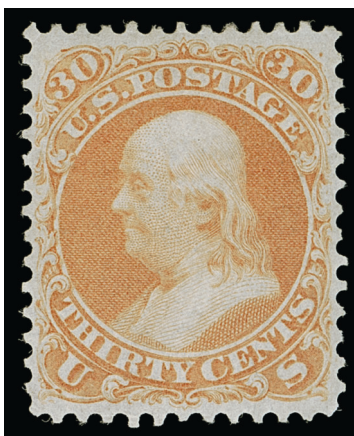
2030

- 2030 ★ **10c Green (68).** Original gum, pretty color, wide margins, fresh and Very Fine, with 1999 P.F. certificate..... 950.00

- 2031 ★ **12c Black (69).** Original gum, intense shade and detailed impression, Very Fine, with 2000 P.F. certificate..... 1,700.00



2031



2032

- 2032 ★ **30c Orange (71).** Original gum, essentially perfect centering, vivid color in the bright early shade

EXTREMELY FINE GEM. AMONG THE FINEST ORIGINAL-GUM EXAMPLES OF THE 30-CENT 1861 ISSUE IN EXISTENCE. THE BRIGHT ORANGE SHADE IS EXTREMELY RARE IN ANY ORIGINAL-GUM CONDITION.

The narrowly spaced 30c 1861 plate left very little room for the 12-gauge perforations between stamps. Consequently, examples with wide margins at sides are extremely rare — this fact is acknowledged in the Scott Catalogue footnote to No. 71. The stamp offered here is one of the few known original-gum examples in a higher grade. Furthermore, the shade is typical of the earliest 1861 printing, distinguished by its brightness and yellow glow. We have seen very few original-gum examples of the early shade, and this is without question one of the finest we have handled. As another indicator of how difficult this issue is to obtain in such choice condition, only three have graded higher than an 80 in the P.S.E.'s Population Report (at 85, 90 and 90J).

With 2004 and 2005 P.F. certificates ..... 2,600.00

90-CENT BLUE, SCOTT 72  
GRADED XF 90



2033

2033 ★ **90c Blue (72).** Original gum, lightly hinged, rich color and proof-like impression, unusually choice centering

EXTREMELY FINE ORIGINAL-GUM EXAMPLE OF THE 90-CENT 1861 ISSUE, GRADED XF 90 BY P.S.E. — ONLY ONE GRADES HIGHER AND NONE SHARE THIS DESIRABLE GRADE.

We have encountered perhaps a half-dozen sound 90c 1861 stamps with original gum and Very Fine or Extremely Fine centering. The multiples that were broken to furnish singles were generally off center.

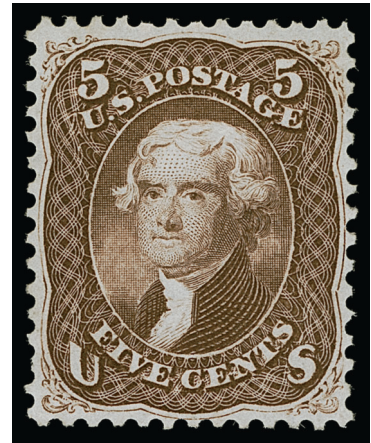
With 2009 P.S.E. certificate (OGph, XF 90; SMQ \$7,500.00). Only one grades higher (at 95) and none share this grade. .... 3,000.00



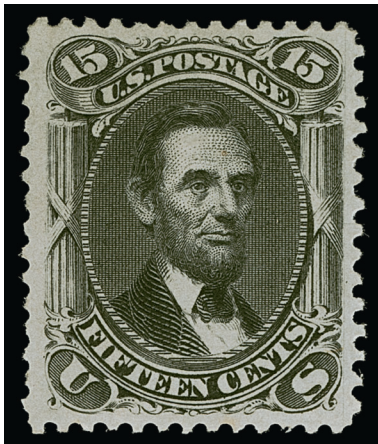
2034

- 2034 ★ **2c Black (73).** Original gum, lightly hinged, detailed impression, Fine, with 1988 P.S.E. certificate... 350.00

- 2035 ★ **5c Brown (76).** Original gum, warm color on bright paper, beautifully centered with balanced margins  
VERY FINE AND CHOICE ORIGINAL-GUM EXAMPLE OF THE 1863 5-CENT BROWN, SCOTT 76.  
Ex Petersen. With 2004 P.S.E. certificate .... 1,400.00



2035



2036

- 2036 ★ **15c Black (77).** Original gum, intense shade and proof-like impression, unusually wide margins for this difficult issue  
EXTREMELY FINE ORIGINAL-GUM EXAMPLE OF THE 1866 15-CENT LINCOLN. SCARCE IN SUCH CHOICE CONDITION.  
Ex Hall. With 1990 and 2015 P.F. certificates.....  
..... 5,000.00



1867-68 GRILLED ISSUE

3-CENT ROSE, C GRILL, SCOTT 83  
GRADED XF 90



2037

- 2037 ★ **3c Rose, C. Grill (83).** Original gum, lightly hinged, clearly defined grill, brilliant color on bright paper, choice centering with well-balanced margins
- EXTREMELY FINE. A FRESH AND BEAUTIFULLY CENTERED ORIGINAL-GUM EXAMPLE OF THE 1867 3-CENT C GRILL.
- The 3c is the only regularly issued denomination that comes with the distinctive C Grill, with the grill points facing up instead of down. The few high-grade original-gum examples owe their existence to the division of blocks of four.
- With 1986, 2003 P.F. and 2017 P.S.E. certificates (XF 90; SMQ \$13,500.00) ..... 5,500.00



2038

- 2038 ★ **1c Blue, E. Grill (86).** Original gum, lightly hinged, bright color and proof-like impression on fresh paper, wide and beautifully balanced margins

EXTREMELY FINE. THE 1868 ONE-CENT E GRILL IS FAR SCARCER THAN ITS F GRILL COUNTERPART, PARTICULARLY IN ORIGINAL-GUM CONDITION.

Some time ago we observed that the 1c E Grill appeared at auction very infrequently, in any form. After analyzing the early 1868 regular-production grills (Z, D, E and F), we concluded that grilling of the 1c 1861 issue with the E (and Z) Grill must have been short-lived, occurring sometime around February 28, 1868. Later grilling of 1c stamps was probably done with the F Grill. Relatively little of the 1c E Grill supply appears to have reached the philatelic market, as evidenced by the stamp's scarcity.

With 1990 and 2017 P.F. and 1991 P.S.E. certificates..... 3,000.00



2039

- 2039 ★ **3c Rose, E. Grill (88).** Original gum, clearly defined grill, brilliant color

EXTREMELY FINE ORIGINAL-GUM EXAMPLE OF THE 1868 3-CENT E GRILL. A VERY RARE STAMP WITH SUCH CHOICE CENTERING.

With 2001 and 2009 P.S.E. certificates (OGph, XF 90; SMQ \$2,650.00). Only two grade higher (at 95) and four others share this desirable grade. This is the finer of two P.S.E. graded examples with original gum we have offered (the other is graded 70)..... 950.00

10-CENT GREEN, E GRILL, SCOTT 89, WITH DOUBLE TRANSFER  
GRADED XF 90



2040

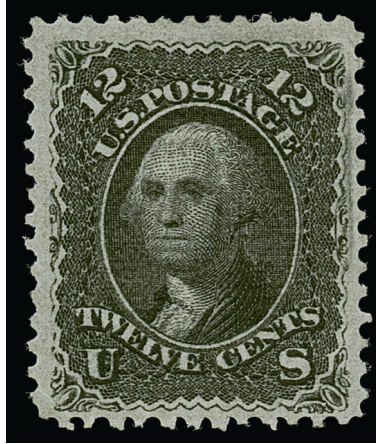
2040 ★ **10c Green, E. Grill, “TAG” Double Transfer (89 var).** Original gum, lightly hinged, warm shade, unusually wide and balanced margins

EXTREMELY FINE. A WONDERFUL ORIGINAL-GUM EXAMPLE OF THE 1868 10-CENT E GRILL. THIS STAMP IS GRADED XF 90 BY P.S.E. — THIS IS THE HIGHEST GRADE AND THE ONLY TO ACHIEVE IT.

A Power Search review shows how difficult it is to find this issue in sound, centered original-gum condition. Most have one margin significantly larger than the others, or are poorly centered.

Ex “Hanover”. With 1997 P.F. and 2011 P.S.E. certificates (OGph, XF 90; SMQ \$13,500.00). This is the highest grade awarded to an original-gum example and the only stamp to achieve it. Scott value with no premium for the double transfer, which is listed but unpriced ..... 5,000.00





2041

- 2041 ★ **12c Black, E. Grill (90).** Original gum, lightly hinged, extra wide margins and well-centered, detailed impression and intense shade

VERY FINE AND CHOICE LIGHTLY HINGED EXAMPLE OF THE 1868 12-CENT E GRILL. A BEAUTIFUL STAMP IN EVERY RESPECT.

As collectors who have been searching for a superb original-gum copy of the 12c E Grill can attest, it is rarely seen in choice condition. One reason is that there have been far fewer multiples of the 12c E Grill than other grilled issues, and, therefore, fewer singles from broken blocks. No blocks were offered in sales of great classic collections such as Crocker, Caspary, Eno, Lilly, Moody, West or Ishikawa. The Zoellner block was broken into Fine-Very Fine singles. The singles in most of the important U.S. collections offered during the past 30 years have been unsatisfactory in one way or another.

Ex Chapin. With 2000 P.F. certificate..... 4,750.00



2042



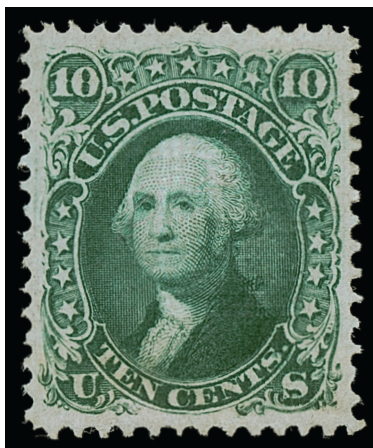
2043



2044

- 2042 ★ **1c Blue, F. Grill (92).** Original gum, lightly hinged, intense shade, clear grill, fresh and Fine, with 2000 P.F. certificate ..... 2,800.00
- 2043 ★ **2c Black, F. Grill (93).** Original gum, lightly hinged, beautifully balanced margins, intense shade on fresh paper, Extremely Fine, with 2000 P.F. certificate..... 450.00
- 2044 ★ **3c Red, F. Grill (94).** Original gum, lightly hinged, unusually well-centered, bright and fresh, Extremely Fine, ex Wingate and Przybyl, with 1999 P.F. certificate ..... 350.00

10-CENT YELLOW GREEN, F GRILL, SCOTT 96  
GRADED XF-SUPERB 95



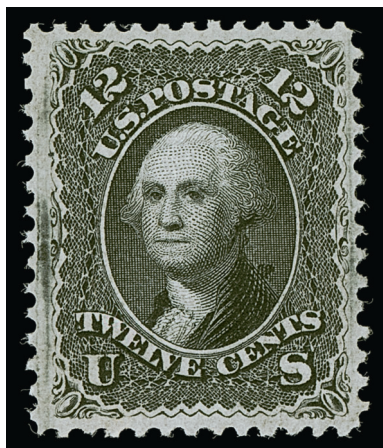
2045

2045 ★ **10c Yellow Green, F. Grill (96).** Original gum, lightly hinged, well-defined grill, rich color, crisp impression, gorgeous centering with wide and balanced margins

EXTREMELY FINE GEM. THIS IS WITHOUT QUESTION ONE OF THE FINEST ORIGINAL-GUM EXAMPLES OF THE 1868 10-CENT F GRILL. A SURPRISINGLY DIFFICULT ISSUE TO OBTAIN IN SUCH SUPERB CONDITION.

Over the years several multiples have been broken to feed collector demand for singles, so the overall number of original-gum copies is relatively high. However, virtually all original-gum copies seem to have at least one margin that is larger than the others. The stamp offered here, perfectly centered with four wide and balanced margins, is a true condition rarity.

Ex "Hanover". With 2005 and 2006 P.F. certificates, the latter graded (XF-Superb 95). By way of comparison, the highest grade in P.S.E.'s Population Report is 70. ... 2,500.00



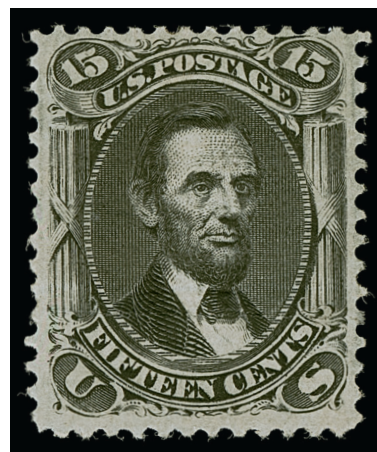
2046

- 2046 ★ **12c Black, F. Grill (97).** Original gum, lightly hinged, clearly defined grill points, beautifully centered with wide and balanced margins, intense shade and impression

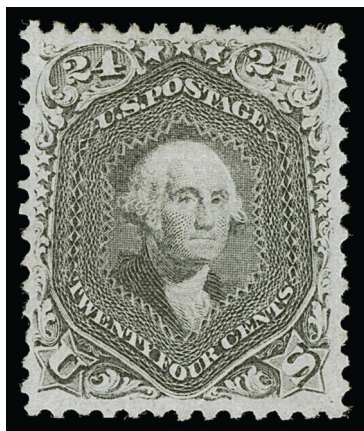
EXTREMELY FINE ORIGINAL-GUM EXAMPLE OF THE 1868 12-CENT F GRILL.

Ex Caspary and Drucker. With 1987 and 2002 P.F. certificates. With 2002 and 2008 P.S.E. certificates (OGph, XF 90; SMQ \$8,500.00). Only four grade higher (all at 95)..... 2,800.00

- 2047 ★ **15c Black, F. Grill (98).** Disturbed original gum, clear grill, intense shade and impression, three horizontal creases at bottom, Very Fine appearance, with 1990 P.S.E. certificate ..... 4,250.00



2047



2048

- 2048 ★ **24c Gray Lilac, F. Grill (99).** Original gum, lightly hinged, clearly defined grill, rich color and crisp impression

VERY FINE. A SCARCE ORIGINAL-GUM EXAMPLE OF THE 1868 24-CENT F GRILL.

With 2005 and 2012 P.F. certificates (VF 80) ..... 8,500.00





2049

2049 ★ **30c Orange, F. Grill (100).** Original gum, vivid color, well-centered for this very difficult issue

VERY FINE. A FRESH AND CHOICE ORIGINAL-GUM EXAMPLE OF THE 1868 30-CENT F GRILL.

This stamp is infrequently found with original gum and a Power Search review of examples we have sold reveals that when it is found, more often than not it has faults, poor centering or both. The P.S.E. Population Report also bears this out as only two Scott 100s are graded with original gum — at 50 and this stamp at 80.

Ex Geisler. With 2021 P.S.E. certificate (OGph, VF 80; SMQ \$10,500.00)..... 9,000.00



2050

2050 ★ **90c Blue, F. Grill (101).** Original gum, small h.r., clearly defined grill, rich color, light horizontal crease at top, small toned spot at bottom left

FINE APPEARANCE. A RARE ORIGINAL-GUM EXAMPLE OF THE 1868 90-CENT F GRILL.

We have offered approximately a dozen original-gum examples since keeping computerized records, and most either have faults or are off-center.

With 2014 P.S.E. certificate ..... 14,500.00

# 1875 RE-ISSUE OF 1861-66 ISSUE



2051

2051 (★) **1c Blue, Re-Issue (102).** Unused (regummed), bright color and paper, well-balanced margins, Extremely Fine, purple backstamp, with 1992 P.F. certificate as original gum ..... 350.00

2052 ★ **2c Black, Re-Issue (103).** Original gum, detailed impression, well-balanced margins

VERY FINE AND CHOICE ORIGINAL-GUM EXAMPLE OF THE 2-CENT BLACK JACK RE-ISSUE.

Only 979 were sold. With 2002 P.F. and 2008 P.S.E. certificates (OGph, VF 80; SMQ \$3,800.00) ..... 3,500.00



2052



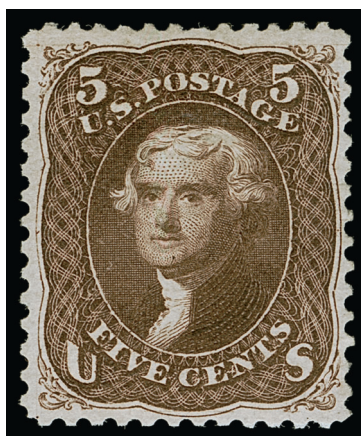
2053

2053 ★ **3c Brown Red, Re-Issue (104).** Original gum, lightly hinged, deep rich color and proof-like impression

VERY FINE AND CHOICE. A BEAUTIFUL ORIGINAL-GUM EXAMPLE OF THE 3-CENT 1861 RE-ISSUE.

The 3c Re-Issue was printed from the original plate, which contained 200 subjects in two panes. 10,000 stamps were printed (50 impressions). Only 465 of the 3c were sold; the remaining 9,535 were destroyed on July 16, 1884. The 3c is one of the three most difficult stamps in the set to obtain in choice original-gum condition (the others are the 24c and 30c).

With 1997 P.F. certificate ..... 3,750.00



2054

- 2054 ★ **5c Brown, Re-Issue (105).** Original gum, deep rich color on bright paper  
 VERY FINE AND CHOICE ORIGINAL-GUM EXAMPLE OF THE 5-CENT 1861 RE-ISSUE.  
 The 5c Re-Issue was printed from a new plate of 100 subjects, compared to the original plate of 200 in two panes. The Re-Issue plate can be identified by a notch at bottom. 10,000 stamps were printed (100 impressions). Only 672 of the 5c were sold; the remaining 9,328 were destroyed on July 16, 1884.  
 Small blue backstamp. With 1980 and 2006 P.F. certificates (VF 80) ..... 2,500.00

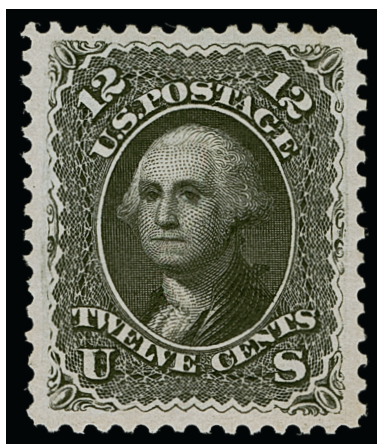


2055

- 2055 ★L **10c Green, Re-Issue (106).** Original gum, rich color on bright paper, wide margins  
 VERY FINE AND CHOICE ORIGINAL-GUM EXAMPLE OF THE 10-CENT 1861 RE-ISSUE.  
 The 10c Re-Issue was printed from a new plate of 100 subjects, compared to the original plate of 200 in two panes. 10,000 stamps were printed and only 451 were sold.  
 With 1996 P.F. certificate..... 2,900.00



12-CENT BLACK, 1861 RE-ISSUE, SCOTT 107  
GRADED XF-SUPERB 95



2056

- 2056 ★ **12c Black, Re-Issue (107).** Original gum, choice centering, wide margins, strong shade and highly detailed impression  
EXTREMELY FINE GEM. AN OUTSTANDING ORIGINAL-GUM EXAMPLE OF THE 12-CENT 1861 RE-ISSUE, WHICH HAS BEEN AWARDED THE GRADE OF XF-SUPERB 95 BY P.S.E.  
With 1998 P.F. and 2007 P.S.E. certificates (OGph, XF-Superb 95; SMQ \$12,500.00).  
Only five grade higher (highest is 98)..... 3,500.00

- 2057 ★ **15c Black, Re-Issue (108).** Original gum, intense shade and detailed impression on bright paper, well-balanced margins

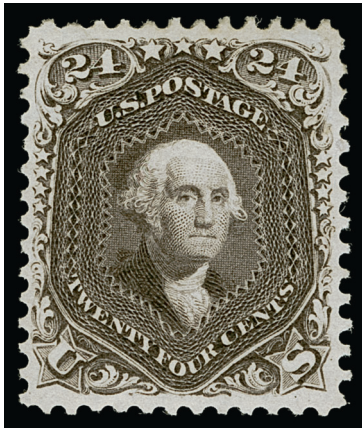
VERY FINE ORIGINAL-GUM EXAMPLE OF THE 15-CENT 1866 RE-ISSUE.

The 15c Re-Issue was printed from the original plate of 200 subjects. 10,000 stamps were printed (50 impressions). Only 397 of the 15c were sold; the remaining 9,603 were destroyed on July 16, 1884.

With 1996 P.F. certificate ..... 4,500.00



2057



2058

- 2058 ★ **24c Deep Violet, Re-Issue (109).** Original gum, lightly hinged, deep rich color and detailed impression on bright paper, unusually choice centering with balanced margins

EXTREMELY FINE GEM. A BEAUTIFUL ORIGINAL-GUM EXAMPLE OF THE 24-CENT 1861 RE-ISSUE. THIS IS ONE OF THE MOST DIFFICULT DENOMINATIONS TO OBTAIN IN SUCH CHOICE CONDITION.

The 24c Re-Issue was printed from the original plate of 200 subjects. A total of 10,000 were printed (50 impressions). Only 346 of the 24c were sold; the remaining 9,654 were destroyed on July 16, 1884.

Ex Golin, Gorham and "Hanover". With 1985, 1999 and 2007 P.F. certificates (XF 90) ..... 6,000.00

- 2059 ★ **30c Brownish Orange, Re-Issue (110).** Part original gum, rich color, well-balanced margins, very faint crease not noted on certificate and probably natural

VERY FINE APPEARING EXAMPLE OF THE 30-CENT 1861 RE-ISSUE.

The 30c Re-Issue was printed from the original plate of 200 subjects. 10,000 stamps were printed (50 impressions). Only 346 of the 30c were sold; the remaining 9,654 were destroyed on July 16, 1884.

With 1984 P.F. certificate ..... 5,750.00



2059

90-CENT BLUE, 1861 RE-ISSUE, SCOTT 111  
GRADED VF-XF 85



2060

2060 ★ **90c Blue, Re-Issue (111).** Original gum, deep rich color on bright crisp paper, unusually choice centering

EXTREMELY FINE. AN OUTSTANDING ORIGINAL-GUM EXAMPLE OF THE 90-CENT 1861 RE-ISSUE.

The 90c Re-Issue was printed from the original plate of 200 subjects. 10,000 stamps were printed (50 impressions). Only 317 of the 90c were sold; the remaining 9,683 were destroyed on July 16, 1884. The example offered here, with original gum, sound and well-centered, is a great rarity.

With 1973, 1991, 2006 and 2013 P.F. certificates (latter grading VF-XF 85). By way of comparison, only one grades higher in the P.S.E. Population Report (at 90)..... 7,000.00



## 1869 PICTORIAL ISSUE



2061



2062



2063

- 2061 ★ **1c Buff (112).** Original gum, small h.r., radiant color, clearly defined grill, fresh and Very Fine, with 1994 P.F. certificate ..... 575.00
- 2062 ★ **2c Brown (113).** Slightly disturbed original gum, crisp impression, Very Fine ..... 500.00
- 2063 ★ **6c Ultramarine (115).** Original gum, h.r., brilliant color, and paper, fresh and Fine, with 1999 P.F. certificate..... 2,500.00



2064

- 2064 ★ **10c Yellow (116).** Original gum, vivid color, fresh and Very Fine, ex “Concord”, with 1983 P.F. certificate ..... 1,850.00

- 2065 (★) **12c Green (117).** Unused (no gum), deep rich color, choice centering, two light creases, Very Fine appearance ..... 725.00



2065



2066

- 2066 ★ **15c Brown & Blue, Ty. I (118).** Original gum, unusually precise centering, even more remarkable are the magnificent color and clarity of impression of the frame and vignette, the paper is fresh and bright

VERY FINE AND CHOICE ORIGINAL-GUM EXAMPLE OF THE SCARCE TYPE I 15-CENT 1869 PICTORIAL ISSUE. ONE OF THE MOST ATTRACTIVE WE HAVE HANDLED IN YEARS.

The 15c Type I comes from the first 1869 printing; in May 1869 the 15c went to press using the second frame plate, which produced Type II. In a condition census, both Type I and II would show similar numbers known in the top tier of original-gum condition. However, Type I is generally a rarer stamp and carries a much higher Scott Catalogue value. Very few of this quality are listed in Power Search. For graded, only two are graded higher than an 80 in the P.S.E. Population Report (at 85 and 95).

Ex "European Connoisseur". With 2015 P.F. certificate ..... 9,000.00



2067

- 2067 ★ **15c Brown & Blue, Ty. II (119).** Original gum, nearly perfect centering with wide margins all around, deep shades of Brown and Blue, fresh and bright

EXTREMELY FINE GEM. ONE OF THE FEW 15-CENT TYPE II 1869 PICTORIAL STAMPS IN EXISTENCE WITH ORIGINAL GUM, SUPERB CENTERING AND FRESHNESS.

Even though the supply of Type II stamps (Scott 119) is more plentiful than its Type I counterpart (Scott 118), we have found that it is at least as difficult, if not more so, to find in such superb condition. This Type II is both centered and lightly hinged, and the vignette is nicely aligned to the frame, something that perfectionists will appreciate.

Ex Wingate. With 1999 and 2020 P.F. certificates (XF 90). By way of comparison, P.S.E. has only graded two at 90, which is the highest grade awarded in this gum category.....  
..... 2,750.00



2068

- 2068 ★ **24c Green & Violet (120).** Original gum, lightly hinged, attractively centered, bright and fresh colors

VERY FINE. THE 24-CENT 1869 PICTORIAL ISSUE IS SELDOM ENCOUNTERED IN SOUND ORIGINAL-GUM CONDITION WITH THE CENTERING AND FRESHNESS PRESENTED BY THIS EXAMPLE.

The 24c 1869 Pictorial is found in original gum condition more often than some of its bicolor brothers of the issue, such as Scott 118 and 122. However, it is very elusive in sound and centered original-gum condition — qualities possessed by this choice example.

Ex “European Connoisseur”. With 2015 P.F. certificate ..... 7,500.00



2069

- 2069 ★ **30c Ultramarine & Carmine (121).** Slightly disturbed original gum, rich colors, thin spot at center not noted on certificates, Very Fine appearance, with 2021 P.S.A.G. certificate .  
..... 4,000.00z



1875 RE-ISSUE OF 1869 PICTORIAL ISSUE



2070

- 2070 ★ **1c Buff, Re-Issue (123).** Accompanying certificate notes part original gum which covers the entire back of the stamp, bright color, Very Fine, with 1983 P.F. certificate..... 525.00

- 2071 ★ **2c Brown, Re-Issue (124).** Part original gum, detailed impression, Very Fine, with 1988 P.F. certificate ..... 600.00



2071



2072

- 2072 ★ **3c Blue, Re-Issue (125).** Part original gum, rich color and detailed impression

VERY FINE AND CHOICE. A WELL-CENTERED EXAMPLE OF THE 3-CENT 1869 PICTORIAL RE-ISSUE WITH PART ORIGINAL GUM.

Original sales figures show that among the 1869 Pictorial Re-Issues, the 3c and 90c stamps accounted for the smallest number of units sold (1,406 and 1,356, respectively). Overall, the 1869s were popular with stamp collectors, far outselling the 1851-60 and 1861-66 Re-Issue sets. However, the 90c stamp's high denomination and the availability of ordinary 3c stamps limited demand. Today, both are rare, and handling over the years has not been kind to many of the surviving examples.

with 1994 P.F. certificate..... 5,000.00

- 2073 ★ **6c Blue, Re-Issue (126).** Part original gum, rich color on bright paper, Very Fine, with 1986 P.F. certificate ..... 1,900.00



2073

- 2074 (★) **10c Yellow, Re-Issue (127).** Unused (traces of original gum), vibrant color, few small faults, Very Fine appearance, with 1993 P.F. certificate, Scott value as no gum ..... 750.00



2074



2075

- 2075 ★ **12c Green, Re-Issue (128).** Original gum, rich color, detailed impression, Fine, with 1994 P.F. certificate...  
..... 2,000.00

- 2076 ★ **15c Brown & Blue, Re-Issue (129).** Large part original gum, rich colors, Very Fine and attractive, purple backstamp, with 1976 P.F. certificate as original gum..... 1,300.00



2076



2077

- 2077 ★ **24c Green & Violet, Re-Issue (130).** Part original gum, rich colors and proof-like impressions, well-balanced margins, Very Fine, with 1974 P.F. certificate ..... 2,000.00



2078

- 2078 ★ **30c Ultramarine & Carmine, Re-Issue (131).** Original gum, rich colors and detailed impressions on bright paper, Very Fine and choice, an attractive example of this issue, with 1993 P.F. certificate ..... 2,250.00

- 2079 (★) **90c Carmine & Black, Re-Issue (132).** Unused (no gum), detailed impressions, reperfed at bottom, Very Fine appearance, with 1991 P.F. certificate not noting reperfering ..... 1,750.00



2079



2080

- 2080 ★ **1c Buff, 1880 Re-Issue (133).** Original gum, single hinge mark, pretty shade, Very Fine, with 1990 P.S.E. certificate ..... 350.00



1870-71 NATIONAL BANK NOTE COMPANY ISSUE

- 2081 ★ **1c Ultramarine, H. Grill (134).** Original gum, clearly defined grill, brilliant color on bright paper, well-balanced margins

EXTREMELY FINE ORIGINAL-GUM EXAMPLE OF THE 1870 ONE-CENT NATIONAL BANK NOTE COMPANY GRILLED ISSUE.

With 1991 P.F. certificate ..... 2,000.00

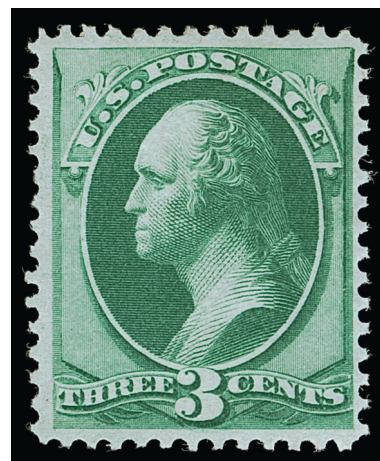


2081



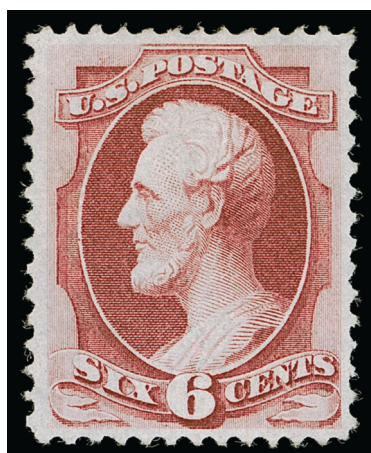
2082

- 2082 ★ **3c Green, H. Grill (136).** Original gum, lightly hinged, fresh and Very Fine, with 1993 P.F. certificate as both block and single..... 575.00



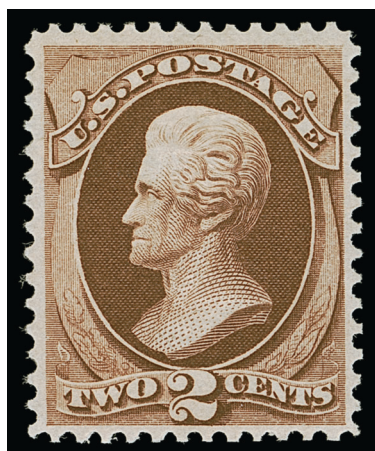
2083

- 2083 ★ **3c Green, H. Grill (136).** Original gum, barely hinged, clear grill, rich color, Very Fine..... 575.00



2084

- 2084 (★) **6c Carmine, H. Grill (137).** Unused (no gum), rich color, well-balanced margins, Very Fine, with 1989 and 2004 P.F. certificates ..... 1,750.00



2085

- 2085 ★ **2c Red Brown, I. Grill (135A).** Original gum, lightly hinged, clearly defined grill, well-balanced margins, Very Fine and choice example of the 2c I Grill, with 2005 P.F. certificate not specifying the grill type ..... 2,000.00



2086



2087



2088

- 2086 ★ **2c Red Brown (146).** Original gum, lightly hinged, pretty shade, Very Fine and choice, with 1992 P.F. certificate ..... 325.00
- 2087 ★ **6c Carmine (148).** Original gum, bright color, wide margins, horizontal crease at top not noted on certificate, Very Fine appearance, with copy of 1990 P.F. certificate for block of four ..... 900.00
- 2088 ★ **7c Vermilion (149).** Original gum, lightly hinged, radiant color, fresh and Very Fine, with 2002 P.F. certificate ..... 900.00

- 2089 ★ **10c Brown (150).** Original gum, lightly hinged, bright shade, well-balanced margins

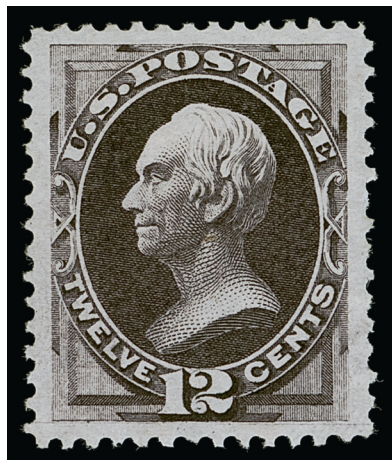
EXTREMELY FINE. A BEAUTIFUL ORIGINAL-GUM EXAMPLE OF THE 1870 10-CENT NATIONAL BANK NOTE COMPANY UNGRILLED ISSUE, GRADED XF 90 BY THE P.F.

With 1999 P.S.E. and 2000 and 2009 P.F. certificates (XF 90). By way of comparison, P.S.E. has graded only one higher (at 90J) and two at this grade. .... 2,000.00



2089





2090

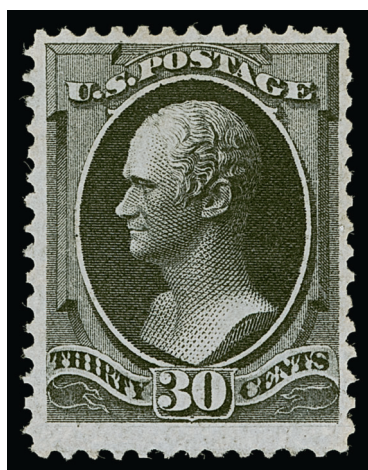


2091



2092

- 2090 (★) **12c Dull Violet (151)**. Unused (no gum), deep rich color, Jumbo margins, nibbed perf at right, still Extremely Fine, with 1998 P.F. certificate ..... 1,050.00
- 2091 ★ **15c Bright Orange (152)**. Original gum, brilliant color, Very Fine, with 1992 P.F. certificate ..... 3,500.00
- 2092 ★ **24c Purple (153)**. Original gum, pretty shade, well-balanced margins, Very Fine and choice, with 1997 P.F. certificate ..... 1,700.00



2093

- 2093 (★) **30c Black (154)**. Unused (no gum), intense shade, reperfed at right, Very Fine appearance, with 1984 P.F. certificate as sound ..... 2,600.00

- 2094 ★ **90c Carmine (155)**. Original gum, lightly hinged, rich color, small thin spot at top right not noted on certificate, Very Fine appearance, with 1996 P.F. certificate ..... 5,000.00



2094



## 1873 CONTINENTAL BANK NOTE COMPANY ISSUE



2095



2096

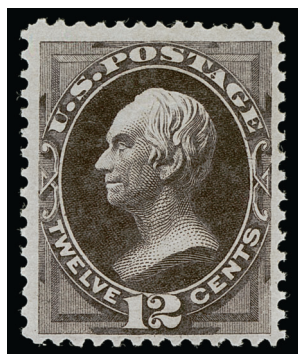


2097



2098

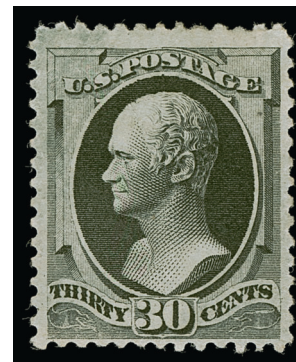
- 2095 ★ **3c Green (158).** Original gum, lightly hinged, deep rich color and proof-like impression, well-proportioned margins, Extremely Fine, with copy of 1989 P.F. certificate for block ..... 110.00
- 2096 ★ **6c Dull Pink (159).** Original gum, radiant color, extra wide margin at right, Very Fine, with 1980 P.F. certificate ..... 375.00
- 2097 ★ **7c Orange Vermilion (160).** Original gum, lightly hinged, brilliant color, Very Fine, with 1994 P.F. certificate..... 1,000.00
- 2098 ★ **10c Brown (161).** Original gum, h.r., bright shade, fresh and Very Fine, with 1996 P.F. certificate..... 800.00



2099



2100



2101



2102

- 2099 ★ **12c Blackish Violet (162).** Original gum, deep rich color, fresh and Fine, with 1994 P.F. certificate ..... 2,200.00
- 2100 ★ **15c Yellow Orange (163).** Original gum, vivid color, fresh and Fine, ex Hall, with 1995 and 2015 P.F. certificates ..... 1,900.00
- 2101 ★ **30c Gray Black (165).** Original gum, crisp impression, trivial natural inclusion at upper right not noted on certificate, Fine, with 1993 P.F. certificate..... 3,750.00
- 2102 ★ **90c Rose Carmine (166).** Original gum, small h.r. at bottom, radiant color, reperfed at right, Very Fine appearance, with 1993 P.F. certificate not noting reperfering..... 2,100.00

END OF SESSION ONE

SESSION TWO (LOTS 2103-2292)  
WEDNESDAY, JUNE 8, 2022, AT 1:30 P.M.

1875 CONTINENTAL BANK NOTE COMPANY SPECIAL PRINTING



2103

- 2103 ★ **1c Ultramarine, Special Printing (167).** Without gum as issued, rich color and detailed impression on bright paper, scissors-separated as almost always but with perfs intact on three sides, choice centering

EXTREMELY FINE. A BEAUTIFUL AND RARE SOUND EXAMPLE OF THE ONE-CENT 1875 CONTINENTAL BANK NOTE COMPANY SPECIAL PRINTING.

Our census of Scott 167 contains 49 examples, including one in the Miller collection owned by The New York Public Library, leaving 48 available to collectors. Of these, fewer than ten have perforations all around.

Census no. 167-UNC-29. Ex Wingate. With 1948 P.F. certificate..... 14,000.00



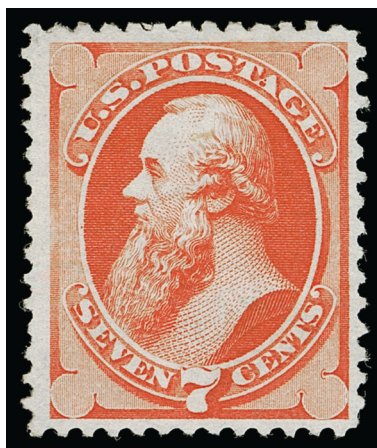
2104

- 2104 ★ **2c Dark Brown, Special Printing (168).** Without gum as issued, deep rich color, **full perforations all around**

VERY FINE. A RARE EXAMPLE OF THE 1875 2-CENT CONTINENTAL BANK NOTE SPECIAL PRINTING WITH PERFORATIONS ALL AROUND.

Our census of Scott 168 contains 62 examples. Many have perfs scissors-trimmed on at least one side and many have perforations into the design. The example offered here, without obvious scissors cutting, is a condition rarity.

Census no. 168-UNC-03. With 1985 and 2005 P.F. certificates. .... 6,000.00



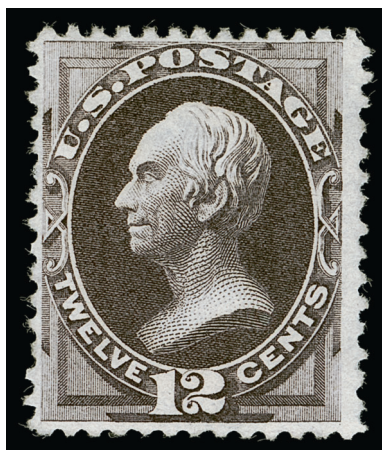
2105

- 2105 ★ **7c Reddish Vermilion, Special Printing (171).** Without gum as issued, **full perforations all around without the usual scissors-separation**, well-centered with nicely balanced margins, brilliant color

VERY FINE. A CHOICE EXAMPLE OF THE 1875 7-CENT CONTINENTAL BANK NOTE COMPANY SPECIAL PRINTING WITH FULL PERFORATIONS ALL AROUND.

Our census of Scott 171 contains 76 examples, including one in the Miller collection owned by The New York Public Library, leaving 75 available to collectors. Most stamps were scissors-separated, affecting the perforations on at least one side.

Census no. 171-UNC-30. Ex Przybyl. With 1978 and 2018 P.F. certificates (F-VF 75). ..... 4,000.00



2106

- 2106 ★ **12c Dark Violet, Special Printing (173).** Without gum as issued, deep rich color on bright paper, **full perforations all around without the usual scissors-separation**

A FINE AND ATTRACTIVE EXAMPLE OF THE 12-CENT 1875 CONTINENTAL BANK NOTE COMPANY SPECIAL PRINTING WITH INTACT PERFORATIONS ALL AROUND.

Our census of Scott 173 contains 73 examples, including one in the Miller collection owned by The New York Public Library, leaving 72 available to collectors. Many are scissors-separated on at least one side, either cutting into the perforations or causing straight edge. The example offered here, with full perforations all around and not showing any evidence of scissors-separation, is a rarity.

Census no. 173-UNC-13. With 1986 P.F. certificate..... 5,500.00





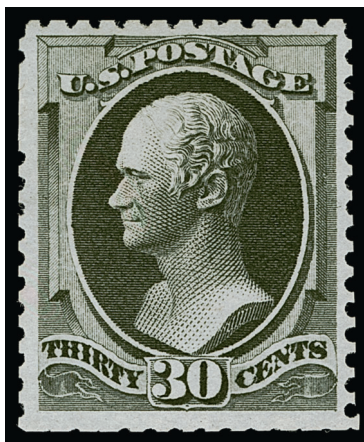
2107

- 2107 ★ **24c Dull Purple, Special Printing (175).** Without gum as issued, **full perforations all around without the usual scissors-separation**, rich color on bright paper

A FINE EXAMPLE OF THE 24-CENT 1875 CONTINENTAL BANK NOTE COMPANY SPECIAL PRINTING WITH COMPLETE PERFORATIONS ON ALL FOUR SIDES.

Our census of Scott 175 contains approximately 110 examples. Few show complete perfs as seen on the stamp offered here.

Census no. 175-UNC-97. With 1969 and 1997 P.F. certificate ..... 3,500.00



2108

- 2108 ★ **30c Greenish Black, Special Printing (176).** Without gum as issued, scissors-separated perfs as usual with complete perfs on three sides and partially complete at bottom, intense shade and impression, outstanding centering with balanced margins

EXTREMELY FINE CENTERING. A GORGEOUS EXAMPLE OF THE 30-CENT 1875 CONTINENTAL BANK NOTE COMPANY SPECIAL PRINTING.

Our census of Scott 176 contains 50 examples, including one in the Miller collection owned by The New York Public Library. Of these, fewer than ten have perforations on all four sides. This example, with nearly full perforations and choice centering is very desirable.

Census no. 176-UNC-50. With 2009 P.S.E. certificate (VG 50). The numerical grade of this stamp is absurdly over-affected by the scissors-separation..... 12,000.00

1875 CONTINENTAL AND  
1879-80 AMERICAN BANK NOTE COMPANY ISSUES



2109

- 2109 ★ **2c Vermilion (178).** Original gum, barely hinged, brilliant color, Very Fine ..... 325.00

- 2110 ★ **5c Blue (179).** Original gum, lightly hinged, deep rich color and proof-like impression, well-balanced margins, Extremely Fine, with 1996 P.F. certificate ..... 700.00



2110



2111

- 2111 ★ **5c Blue (185).** Original gum, lightly hinged, deep shade, fresh and Very Fine, with 1984 P.F. certificate ..... 500.00

- 2112 ★ **6c Pink (186).** Original gum, brilliant color, couple perf tip creases at top, otherwise Fine, with 1996 P.F. certificate ..... 900.00



2112



- 2113 ★ **10c Brown, Without Secret Mark (187).** Original gum, pretty color and nice impression

VERY FINE ORIGINAL-GUM EXAMPLE OF THE 10-CENT 1879 AMERICAN BANK NOTE ISSUE WITHOUT SECRET MARK.

With 1989 P.F. certificate ..... 3,000.00



2113



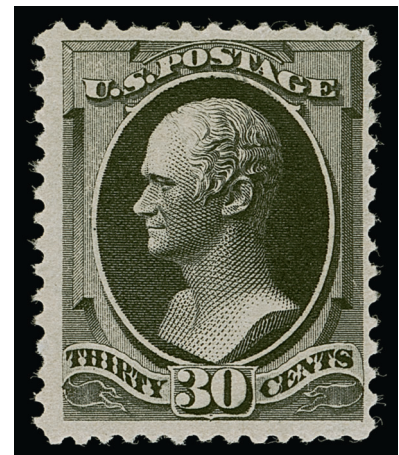
2114

- 2114 ★ **10c Brown, With Secret Mark (188).** Original gum, barely hinged, deep rich color and proof-like impression, well-proportioned margins

EXTREMELY FINE. A BEAUTIFUL ORIGINAL-GUM EXAMPLE OF THE 1879 10-CENT AMERICAN BANK NOTE COMPANY ISSUE WITH SECRET MARK. VERY DIFFICULT TO FIND IN THIS QUALITY.

With 2005 and 2006 P.F. certificates (XF 90). By way of comparison, P.S.E. has graded only two hinged and two Mint N.H. higher (90J for hinged, 95 for NH)..... 1,800.00

- 2115 ★ **30c Full Black (190).** Original gum, single hinge mark, intense shade and impression, fresh and Fine, with 1995 P.F. certificate ..... 850.00



2115



2116

- 2116 ★ **90c Carmine (191).** Original gum, brilliant color, wide and balanced margins

EXTREMELY FINE ORIGINAL-GUM EXAMPLE OF THE 90-CENT 1879 AMERICAN BANK NOTE ISSUE, GRADED XF 90 BY P.S.E.

With 1981 P.F. and 2013 P.S.E. certificates (OGH, XF 90; SMQ \$4,750.00). Only three grade higher (at 95) and two share this desirable grade. .... 2,100.00



## 1880-83 AMERICAN BANK NOTE COMPANY SPECIAL PRINTING



2117

- 2117 ★ **7c Scarlet Vermilion, Special Printing (196).** Without gum as issued, brilliant color

VERY FINE EXAMPLE OF THE 7-CENT 1880 AMERICAN BANK NOTE COMPANY SPECIAL PRINTING.

Our census of Scott 196 contains approximately 86 examples. The centering of this stamp is above average.

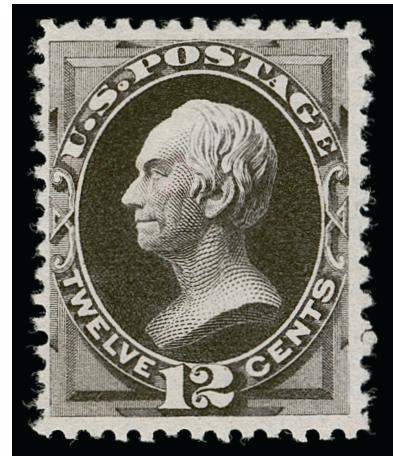
Census no. 196-UNC-42. With 1973 and 1997 P.F. certificates ..... 6,750.00

- 2118 ★ **12c Blackish Purple, Special Printing (198).** Without gum as issued, intense shade and impression

A FINE AND SOUND EXAMPLE OF THE 1880 12-CENT AMERICAN BANK NOTE COMPANY SPECIAL PRINTING.

Our census of Scott 198 contains 64 examples. Of these, at least one-third have flaws. Many have poor centering.

Census no. 198-UNC-55. With 1972 and 1992 P.F. certificates. Two backstamps including one showing thru at center. .... 9,500.00



2118



2119

- 2119 ★ **15c Orange, Special Printing (199).** Without gum as issued, vivid color, three wide margins

FINE AND RARE SOUND EXAMPLE OF THE 15-CENT 1880 AMERICAN BANK NOTE COMPANY SPECIAL PRINTING. ONLY 37 ARE AVAILABLE TO COLLECTORS.

Our census of Scott 199 contains 38 examples, including one in the Miller collection owned by The New York Public Library, leaving 37 available to collectors. Of these, only 12 are confirmed as sound, at least 11 have faults and 14 need to be reexamined according to current methods and standards. This sound example is very desirable.

Census no. 199-UNC-29. Ex Colonel Green and Wingate. With 1948 P.F. and 1997 P.S.E. certificates ..... 30,000.00



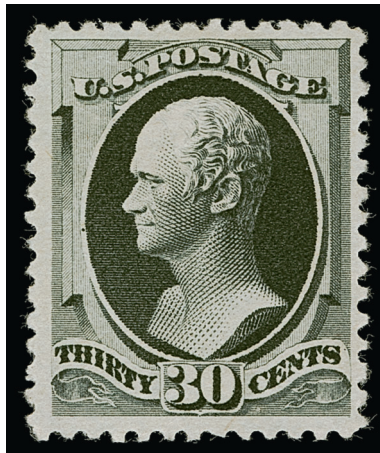
2120

- 2120 ★ **24c Dark Violet, Special Printing (200).** Without gum as issued, rich color on bright paper, long and full perforations

FINE EXAMPLE OF THE 1880 24-CENT AMERICAN BANK NOTE COMPANY SPECIAL PRINTING.

Our census of Scott 200 contains 68 examples, about a third of which have thins or small faults.

Census no. 200-UNC-68. With 2002 P.F. certificate. .... 9,000.00



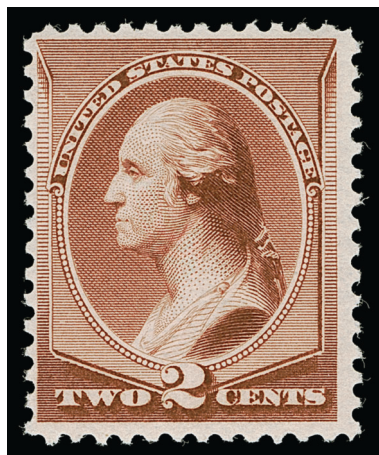
2121

- 2121 ★ **30c Greenish Black, Special Printing (201).** Without gum as issued, intense shade, better centering than normally seen

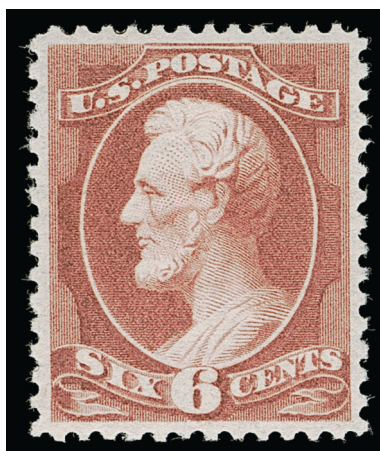
VERY FINE AND CHOICE. A RARE SOUND AND CENTERED EXAMPLE OF THE 1880 30-CENT AMERICAN BANK NOTE COMPANY SPECIAL PRINTING.

Our census of Scott 201 contains 46 examples, including one in the Miller collection owned by The New York Public Library, leaving 45 available to collectors. Only approximately 11 are confirmed as sound and only seven of those are well-centered. Another 16 need to be reexamined for condition, but only a handful of these have better than Fine centering.

Census no. 201-UNC-28. With 1989 P.F. and 1990 and 2006 P.S.E. certificates.. 22,500.00



2122



2123



2124

- 2122 ★★ **2c Pale Red Brown, Special Printing (211B).** Mint N.H., rich color on bright paper, fresh and Fine, with 1988 P.F. certificate ..... 1,000.00
- 2123 ★ **6c Rose (208).** Original gum, barely hinged, brilliant color on bright paper, well-balanced margins, Extremely Fine, a beautiful stamp, with 1998 P.F. certificate ..... 825.00
- 2124 ★★ **4c Blue Green (211).** Mint N.H., intense shade and impression, Very Fine, with 1991 P.F. certificate..... 800.00

## COLUMBIAN ISSUE



2125

- 2125 ★ **4c Columbian, Error of Color (233a).** Original gum, wonderful deep shade of the error color

A FINE AND FRESH ORIGINAL-GUM EXAMPLE OF THE COLUMBIAN COLOR ERROR IN THE DEEPER OF THE TWO KNOWN SHADES.

The 4c Columbian color error was caused by the use of a wrong batch of ink, and spectrographic analysis has shown that the blue inks of the 4c error and 1c Columbian have the same components. Stamps from at least three panes reached collectors, and the few cancelled examples indicate that stamps used by the public came from at least one additional pane. It is likely that a number of full sheets were printed using the wrong ink, and most of the stamps have simply been lost to philately.

With 1968 P.F. and 1999 certificates..... 17,500.00





2126

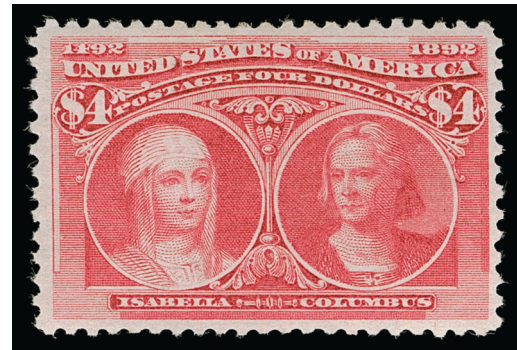


2127

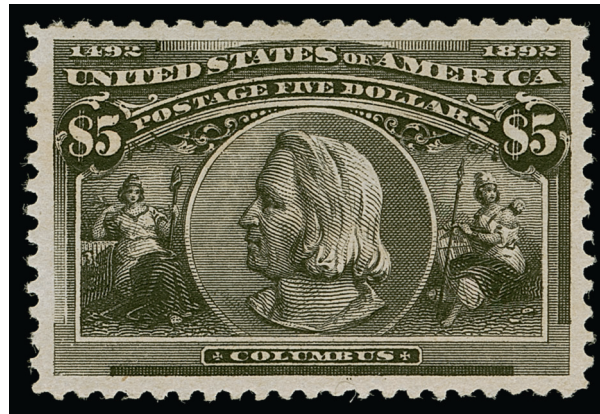
2126 ★ **50c Slate Blue, Columbian (240).** Original gum, lightly hinged, deep rich color, wide and balanced margins, Extremely Fine..... 450.00

2127 ★ **\$3.00 Yellow Green, Columbian (243).** Original gum with some natural gum creases not noted on certificate, rich color, well-balanced margins, Extremely Fine, with 1987 P.F. certificate.. 1,500.00

2128 (★) **\$4.00 Crimson Lake, Columbian (244).** Unused (regummed), radiant color, expertly reperfed, Very Fine appearance, with 1988 P.F. certificate as sound and original gum, Scott value as no gum ..... 1,000.00



2128



2129

2129 ★ **\$5.00 Black, Columbian (245).** Original gum, intense shade and proof-like impression, well-balanced margins

EXTREMELY FINE ORIGINAL-GUM EXAMPLE OF THE \$5.00 COLUMBIAN ISSUE.

With 1989 P.F. certificate..... 2,400.00

1894-98 BUREAU ISSUE



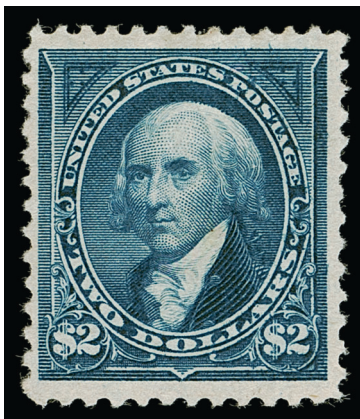
2130

2130 ★ **\$1.00 Black (261).** Original gum, lightly hinged, intense shade and impression, Very Fine, with 1991 P.F. certificate..... 1,000.00

2131 ★ **\$1.00 Black, Ty. II (261A).** Original gum, intense shade and impression, well-proportioned margins  
EXTREMELY FINE ORIGINAL-GUM EXAMPLE OF THE 1894 \$1.00 TYPE II.  
The unwatermarked Bureau issue is difficult to obtain with such choice centering ..... 2,100.00



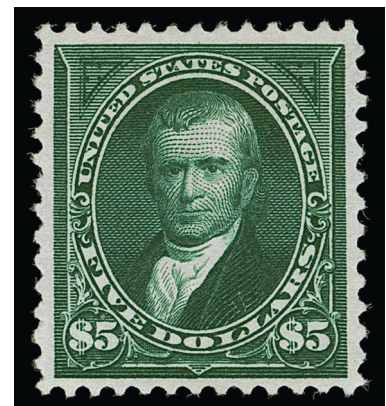
2131



2132

2132 ★ **\$2.00 Bright Blue (262).** Original gum, lightly hinged, bright shade, wide margins, Very Fine, with copy of 1988 P.F. certificate for block and 1990 P.S.E. certificate as single ..... 2,750.00

2133 ★ **\$5.00 Dark Green (263).** Original gum, pretty color on bright paper, three wide margins  
VERY FINE ORIGINAL-GUM EXAMPLE OF THE 1894 \$5.00 UNWATERMARKED BUREAU ISSUE.  
With 1989 P.F. certificate..... 4,000.00



2133





2134



2135



2136

- 2134 ★ **\$1.00 Black, Ty. I (276).** Original gum, intense shade and impression, Very Fine, with 1979 P.F. certificate... 600.00
- 2135 ★ **\$1.00 Black, Ty. II (276A).** Original gum, deep shade, Fine..... 1,250.00
- 2136 ★ **\$2.00 Bright Blue (277).** Original gum, lightly hinged, brilliant color, Very Fine..... 900.00
- 2137 ★ **\$5.00 Dark Green (278).** Original gum, lightly hinged, rich color on bright paper, Fine, with copy of 1985 P.F. certificate for block..... 2,000.00



2137

## TRANS-MISSISSIPPI ISSUE



2138

- 2138 ★ **\$1.00 Black, Trans-Mississippi (292).** Original gum, lightly hinged, detailed impression, well-balanced margins, Extremely Fine..... 1,500.00

- 2139 ★ **\$2.00 Orange Brown, Trans-Mississippi (293).** Original gum, pretty color, Fine, with 1990 P.F. certificate..... 1,900.00



2139



PAN-AMERICAN ISSUE



2140

2140 ★ **1c Green & Black, Pan-American, Center Inverted (294a).** Original gum, lightly hinged, deep rich colors, choice centering for this difficult issue

VERY FINE. A BEAUTIFUL SOUND ORIGINAL-GUM EXAMPLE OF THE ONE-CENT PAN-AMERICAN INVERT.

According to Johl, the 1c Pan-American Inverts were found in at least four different post offices around the country soon after release of the issue in May 1901, including Bessemer Ala., Richmond Va., Utica N.Y. and Connecticut.

With 2004 P.F. certificate ..... 12,500.00



2141

2141 ★★田 **2c Carmine & Black, Pan-American (295).** Mint N.H. top imprint and plate no. 1122 block of six with plate printers' initials at upper left, rich colors, choice centering, few trivial natural gum skips, Extremely Fine and attractive plate block..... 500.00

2142 ★★田 **4c Deep Red Brown & Black, Pan-American (296).** Mint N.H. top imprint and plate no. 1145 block of six, string of plate printers' initials at top, rich color, Very Fine, a fresh plate block, ex Byers...  
..... 3,250.00



2142



- 2143 ★★田 5c Ultramarine & Black, Pan-American (297). Mint N.H. top imprint and plate no. 1140 block of six, brilliant color, fresh and Fine, with 2006 P.S.E. certificate ..... 3,600.00



2143



2144

- 2144 ★田 8c Brown Violet & Black, Pan-American (298). Top imprint and plate no. 1150 block of six, original gum, lightly hinged, rich colors, tiny crease at top right at edge of selvage, Very Fine, an attractive top position plate block... ..... 3,800.00

- 2145 ★田 10c Yellow Brown & Black, Pan-American (299). Bottom imprint and plate no. 1151 block of six, three stamps Mint N.H., positions 2, 3 and 4 lightly hinged, pretty colors VERY FINE. AN ATTRACTIVE ORIGINAL-GUM IMPRINT AND PLATE NUMBER BLOCK OF SIX OF THE 10-CENT PAN-AMERICAN ISSUE.  
With 2001 P.F. certificate ..... 6,000.00



2145

## 1902-08 ISSUE



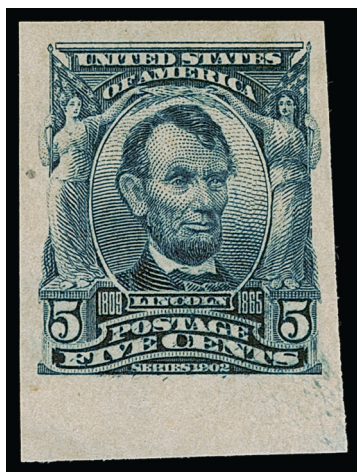
2146

- 2146 ★ **\$2.00 Dark Blue (312).** Original gum, lightly hinged, rich color, fresh and Very Fine, with 1990 P.F. certificate..... 825.00



2147

- 2147 ★ **\$5.00 Dark Green (313).** Original gum, detailed impression, reperfed, Very Fine appearance..... 2,100.00



2148

- 2148 ★ **5c Blue, Imperforate (315).** Original gum, h.r., large to huge margins including **bottom sheet margin**, rich color, Extremely Fine..... 350.00

- 2149 ★ **5c Blue, Imperforate, U.S. Automatic Vending Co. Ty. I (315).** With **top sheet margin**, original gum, rich color, Extremely Fine, with 1988 P.F. certificate..... 1,100.00



2149



5-CENT BLUE, VERTICAL COIL, SCOTT 317



2150

2150 ★ **5c Blue, Coil (317).** Pair, lightly hinged, deep rich color and proof-like impression, unusually choice centering with wide and balanced margins

EXTREMELY FINE. A MAGNIFICENT SUPERBLY CENTERED PAIR OF THE 1908 5-CENT VERTICAL COIL, SCOTT 317.

The 5c 1908 Coil stamps, which were stripped by hand, are almost always strongly centered to one side. This pair is better centered than most.

Ex Whitman. With 1987, 1995 and 2009 P.F. certificates ..... 15,000.00

ONE-CENT BLUE GREEN, HORIZONTAL COIL, SCOTT 318  
GRADED XF 90



2151

2151 ★ **1c Blue Green, Coil (318).** Pair, original gum, lightly hinged, rich color and proof-like impression, beautiful centering with wide and balanced margins

EXTREMELY FINE GEM. A SUPERB PAIR OF THE ONE-CENT 1908 HORIZONTAL COIL, SCOTT 318.

With 1988, 2002 and 2014 P.F. certificates (XF 90 XQ). The "XQ" denotes "Extraordinary Quality". By way of comparison, the highest grade in the P.S.E. Population Report for a pair is VF-XF 85 (three examples). One other shares this grade at the P.F., recently offered in our John B. Field sale..... 9,500.00



2152

2152 ★ **1c Blue Green, Coil (318).** Lightly hinged, deep rich color, choice centering with well-balanced margins

EXTREMELY FINE. A BEAUTIFUL EXAMPLE OF THE 1908 ONE-CENT HORIZONTAL COIL, SCOTT 318.

Ex “Hanover” and Myerson. With 2005 P.S.E. certificate for pair and 2016 P.F. certificate (VF-XF 85) — we think this meets every criteria for XF 90 grade..... 4,500.00



2153

2153 ★ **2c Carmine, Coil (322).** Pair, lightly hinged, brilliant color

FRESH AND VERY FINE PAIR OF THE 2-CENT 1908 HORIZONTAL COIL.

Issued on July 31, 1908, and intended only to be used by private vending machine companies, Scott 322 is only known with the Die II widened line at lower left.

Ex “Vineyard” and Hoffman. With 1983, 1995 and 2008 P.F. certificates..... 17,500.00



2-CENT CARMINE, HORIZONTAL COIL, SCOTT 322  
GRADED VF-XF 85



2154

2154 ★ **2c Carmine, Coil (322).** Original gum, single light hinge mark, brilliant color, unusually choice centering

EXTREMELY FINE EXAMPLE OF THE RARE 1908 2-CENT HORIZONTAL COIL, SCOTT 322.

Issued on July 31, 1908, and intended only to be used by private vending machine companies, Scott 322 is only known with the Die II widened line at lower left.

With 2004 and 2011 P.F. certificates (VF-XF 85) ..... 7,000.00

## LOUISIANA PURCHASE ISSUE

- 2155 ★★ 1c Green, Louisiana Purchase (323). Mint N.H. wide top imprint and plate no. 2139 block of six, deep rich color, Very Fine and choice Mint N.H. plate block ..... 600.00



2155



2156

- 2156 ★★田 2c Carmine, Louisiana Purchase (324). Mint N.H. bottom imprint and plate no. 2082 block of six, brilliant color, fresh and Very Fine, with 1999 P.F. certificate ..... 600.00

- 2157 ★田 zimprint and plate no. 2069 block of six, stamps Mint N.H., h.r. in gummed selvage, radiant color, Very Fine, Scott value as hinged ..... 400.00



2157





2158

2158 ★★田 3c Violet, Louisiana Purchase (325). Mint N.H. wide top imprint and plate no. 2102 block of six, intense shade and proof-like impression, unusually choice centering

EXTREMELY FINE MINT NEVER-HINGED WIDE TOP POSITION PLATE BLOCK OF THE 3-CENT LOUISIANA PURCHASE ISSUE.

With 2002 P.F. certificate.....  
..... 1,750.00

2159 ★★田 5c Dark Blue, Louisiana Purchase (326). Mint N.H. full top imprint and plate no. 2099 block of six, deep rich color, Very Fine and attractive plate block .....

..... 1,850.00



2159



2160

2160 ★★田 10c Red Brown, Louisiana Purchase (327). Mint N.H. full top imprint and plate no. 2108 block of six, two plate printer's initials in left selvage, pretty color, well-balanced margins

EXTREMELY FINE MINT NEVER-HINGED TOP PLATE BLOCK OF THE 10-CENT LOUISIANA PURCHASE ISSUE.

With 1998 P.F. certificate .....

..... 4,000.00



## JAMESTOWN ISSUE



2161



2162

2161 ★田 2c Carmine, Jamestown (329). Top imprint and plate no. 3658 block of six, original gum, lightly hinged, brilliant color, Very Fine, with 2004 P.S.E. certificate ..... 650.00

2162 ★★田 5c Blue, Jamestown (330). Mint N.H. top imprint and plate no. 3554 block of six, rich color on bright paper, natural perf disc indent on lower left stamp, Fine-Very Fine never-hinged plate block, with 2004 P.S.E. certificate..... 6,000.00

## 1908-12 ISSUES



2163



2164



2165

- 2163 ★★ 4c Orange Brown, Coil (350). Mint N.H. pair, rich color on bright paper, top stamp with tiny spot on gum, Very Fine, with 1981 P.F. certificate ..... 900.00
- 2164 ★ 5c Blue, Coil (351). Pair, original gum, lightly hinged, rich color, Fine ..... 400.00
- 2165 ★ 1c Green, Coil (352). Guide line pair, original gum, rich color, Very Fine, with 1990 P.F. certificate..... 825.00



2166



2167



2168

- 2166 ★★ **4c Orange Brown, Coil (354).** Mint N.H., pretty color, well-balanced margins, Extremely Fine, with copy of 1989 P.F. certificate for pair ..... 425.00
- 2167 ★ **5c Blue, Coil (355).** Pair, original gum, rich color, few perf separations sensibly reinforced, still Very Fine, with 1981 P.F. certificate for strip of four not noting perfs ..... 525.00
- 2168 ★★ **5c Blue, Coil (355).** Mint N.H., rich color on bright paper, choice centering with well-balanced margins, Extremely Fine, with 1986 P.F. certificate for pair ..... 450.00



2169

- 2169 ★ **10c Yellow, Coil (356).** Pair, original gum, radiant color  
 VERY FINE ORIGINAL-GUM PAIR OF THE 1909 10-CENT HORIZONTAL COIL, SCOTT 356.  
 According to Johl (Volume 1, page 181), only 10,000 of the 10c Washington coil stamp were issued. They were made especially for a New York firm to send out advertising samples, similar to the 3c Orangeburg coil. Only a few rolls were sold to the firm, and the remaining rolls were distributed to some of the large post offices across the country. Dealers acquired several rolls, but because most contemporary collectors did not collect coils, many were used and destroyed.  
 With 1955 and 1992 P.F. certificates..... 8,000.00



2170

- 2170 ★ **10c Yellow, Coil (356).** Original gum, h.r., vibrant color, horizontal crease at top outside of the design, Fine appearance, pencil note on back by Molesworth ..... 3,500.00



BLUISH PAPER



2171

- 2171 ★★ **3c Deep Violet, Bluish (359).** Mint N.H., rich color on deeply blued paper, fresh and Fine, we have offered perhaps eight in Mint N.H. condition since keeping computerized records, with 1991 P.F. certificate ..... 4,000.00



4-CENT ORANGE BROWN ON BLuish PAPER, SCOTT 360  
GRADED XF 90



2172

2172 ★ **4c Orange Brown, Bluish (360).** Lightly hinged, intense shade on nicely blued paper, unusually choice centering for this difficult issue

EXTREMELY FINE GEM. A STUNNING ORIGINAL-GUM EXAMPLE OF THE 4-CENT BLuish PAPER, GRADED XF 90 BY THE PHILATELIC FOUNDATION.

The June 1910 Third Assistant Postmaster General's report states that 4,400 (eleven sheets) of the 4c were printed on Bluish Paper. It is believed that none of the 4c and 8c Bluish Paper stamps were distributed to post offices, and that all of the examples in collectors' hands reached the market through the Travers-Steinmetz exchange and the 1914 National Museum trades to H. F. Colman (12 copies) and Nassau Stamp Company (65 copies).

Of the many examples of this major 20th Century rarity we have offered, only a small number have centering that can be compared to this stamp.

Ex Myerson. With 1982, 2004 and 2005 P.F. certificates (XF 90). The highest grade awarded by either P.F. or P.S.E. — P.S.E. has graded only one at this grade with none higher, while the P.F. shows three with none higher. .... 27,500.00



2173

- 2173 ★ **5c Blue, Bluish (361).** Original gum, rich color on deeply blued paper  
 VERY FINE AND CHOICE ORIGINAL-GUM EXAMPLE OF THE 5-CENT ON BLUISH PAPER.  
 With 1987 P.F. certificate..... 5,750.00



2174

- 2174 ★ **6c Red Orange, Bluish (362).** Original gum, h.r., vibrant color, Very Fine, with 1967 and 1992 P.F. certificates ..... 1,250.00

8-CENT OLIVE GREEN ON BLuish PAPER, SCOTT 363



2175

2175 ★ **8c Olive Green, Bluish (363).** Original gum, lightly hinged, rich color on nicely blued paper

FRESH AND VERY FINE SOUND ORIGINAL-GUM EXAMPLE OF THE RARE 8-CENT ON BLuish PAPER.

The June 1910 Third Assistant Postmaster General's report states that 4,000 (ten sheets) of the 8c were printed on Bluish Paper. It is believed that none of the 4c and 8c Bluish Paper stamps were distributed to post offices, and that all of the examples in collectors' hands reached the market through the Travers-Steinmetz exchange and the 1914 National Museum trades to H. F. Colman (12 copies) and Nassau Stamp Company (65 copies).

With 1973 and 2002 P.F. certificates..... 30,000.00



- 2176 ★ **10c Yellow, Bluish (364).** Original gum, intense shade on deeply blued paper, Very Fine, with 1987 P.F. certificate..... 1,600.00



2176



2177

- 2177 ★ **13c Bluish Green, Bluish (365).** Original gum, lightly hinged, deep rich color and proof-like impression, unusually choice centering
- EXTREMELY FINE. AN ATTRACTIVE ORIGINAL-GUM EXAMPLE OF THE 13-CENT ON BLUISH PAPER.
- Signed in pencil. With 1968 P.F. certificate . 2,600.00

- 2178 ★ **15c Pale Ultramarine, Bluish (366).** Original gum, lightly hinged, rich color, well-proportioned margins, Very Fine and choice, with 1973 P.F. certificate ..... 1,300.00



2178



2179

2179 ★★田 2c Lincoln, Bluish (369). Mint N.H. left imprint, plate no. 4976 and small solid star block of six with long string of plate printers' initials, rich color on deeply blued paper with characteristic intense watermark, choice centering and margins

EXTREMELY FINE. A BEAUTIFUL MINT NEVER-HINGED PLATE BLOCK OF THE 2-CENT LINCOLN ON BLUISH PAPER.

Scarce in Mint N.H. condition with such choice condition ..... 4,250.00



2180

2180 ★田 2c Carmine, Lincoln, Bluish (369). Wide top imprint, plate no. 4977 and small solid star block of six, original gum, lightly hinged, rich color, choice centering, Extremely Fine..... 2,750.00



## 1912-23 ISSUES



2181



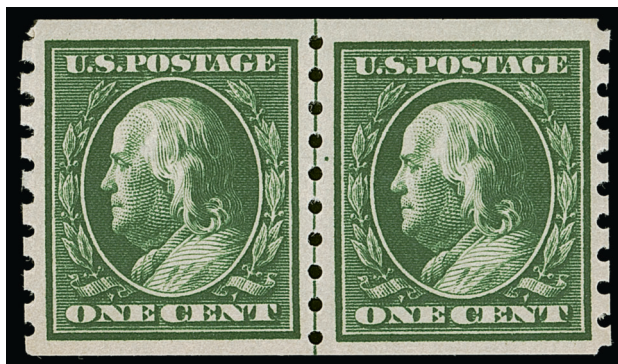
2182

- 2181 ★ **1c Green, Coil (387).** Pair with 3mm spacing, original gum, lightly hinged, radiant color, Very Fine, with 1993 P.F. certificate ..... 475.00
- 2182 ★ **2c Carmine, Coil (388).** Original gum, lightly hinged, brilliant color, fresh and Fine, with 1990 and 1991 P.F. certificates, the former as a strip of four ..... 1,500.00

- 2183 ★ **2c Carmine, Coil (388).** Pair with 3mm spacing, original gum, brilliant color
- FRESH AND FINE ORIGINAL-GUM  
EXAMPLE OF THE SCARCE 1910  
2-CENT HORIZONTAL COIL, SCOTT  
388.
- Right stamp light pencil on gum.  
With 1970 P.F. certificate.....  
..... 4,000.00



2183



2184



2185

- 2184 ★★ **1c Green, Coil (392).** Mint N.H. guide line pair, rich color, Very Fine, with 1976 A.P.S. certificate..... 400.00
- 2185 ★ **3c Deep Violet, Coil (394).** Pair, original gum, single hinge mark, rich color, well-balanced margins, Extremely Fine ..... 150.00



PANAMA-PACIFIC ISSUE



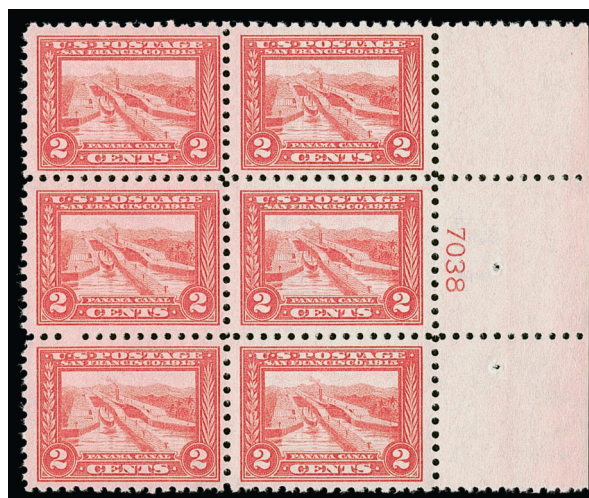
2186



2187

- 2186 ★★田 2c Carmine, Panama-Pacific (398). Mint N.H. right plate no. 6313 block of six, bright color, Very Fine and choice, with 2009 P.S.E. certificate ..... 625.00
- 2187 ★田 5c Blue, Panama-Pacific (399). Bottom plate no. 6133 block of six with full selvage, top center stamp h.r., others Mint N.H., rich color, slight discoloration in bottom right selvage, still Fine-Very Fine, ex Spalding and Byers..... 1,900.00

- 2188 ★田 2c Carmine, Panama-Pacific, Perf 10 (402). Right plate no. 7038 block of six, lightly hinged, brilliant color, fresh, left three Fine, right three Very Fine-Extremely Fine, ex Byers..... 1,200.00



2188



2189

- 2189 ★ 10c Orange, Panama-Pacific, Perf 10 (404). Original gum, lightly hinged, vibrant color, Very Fine, with 1978 P.F. certificate. 675.00





2190



2191

- 2190 ★ **50c Violet (421).** Original gum, lightly hinged, pretty pastel shade, Very Fine and choice ..... 350.00
- 2191 ★ **3c Violet, Coil (445).** Pair, original gum, rich color, Very Fine, with 1991 P.F. certificate ..... 500.00

- 2192 ★ **2c Red, Ty. I, Coil (449).** Pair, original gum, top stamp h.r., bottom stamp Mint N.H. with pencil notation, some perf separations

FINE PAIR OF THE 2-CENT TYPE I ROTARY COIL, SCOTT 449.

With 1979 P.F. and 2014 P.S.E. certificates. Scott value as hinged singles..... 5,000.00



2192



2193

- 2193 ★ **2c Red, Ty. I, Coil (449).** Original gum, lightly hinged, radiant color

VERY FINE ORIGINAL-GUM EXAMPLE OF THE 2-CENT TYPE I ROTARY COIL, SCOTT 449.

Signed Sloane. With 1979 and 1992 P.F. certificates .. 2,500.00





- 2194 ★★ **2c Carmine Rose, Ty. I, Coil (453).** Mint N.H., brilliant color, Very Fine and choice, with 1991 P.F. certificate ..... 625.00
- 2195 ★★ **2c Carmine Rose, Ty. I, Coil (453).** Mint N.H., radiant color, Very Fine, with 1990 P.F. certificate for strip of three ..... 300.00
- 2196 ★★ **2c Red, Ty. II, Coil (454).** Mint N.H. pair, brilliant color, Very Fine and choice, with copy of 1990 P.F. certificate for strip of four ..... 360.00
- 2197 ★★ **2c Carmine, Ty. I, Imperforate Coil (459).** Mint N.H. pair, brilliant color, Very Fine and choice, with 1991 P.F. certificate ..... 875.00
- 2198 ★★ **2c Carmine, Ty. I, Imperforate Coil (459).** Mint N.H., radiant color, wide margins, Very Fine and choice, with 1991 P.F. certificate for pair ..... 400.00
- 2199 ★田 **5c Carmine, Error (467).** Double error in block of twelve, errors Mint N.H., four 2c stamps at corners h.r., brilliant color, Fine-Very Fine, you could end up with two decent Mint N.H. strips, Scott value as hinged ..... 1,750.00
- 2200 ★ **50c Light Violet (477).** Original gum, radiant color, Very Fine, with 1991 P.F. certificate .. 850.00



- 2201 ★ **2c Carmine, Ty. II, Coil (491).**  
Pair, original gum, lightly hinged,  
brilliant color

A FINE ORIGINAL-GUM PAIR OF  
THE 2-CENT ROTARY TYPE II HORI-  
ZONTAL COIL, SCOTT 491.

Unlike most other issues, the hori-  
zontal coil is actually scarcer than  
the vertical coil. It was in produc-  
tion for only a short period of time  
before being replaced by the Type  
III, Scott 492.

With 1993 P.F. certificate.....  
..... 5,750.00



2201



2202

- 2202 ★ **2c Carmine, Ty. II, Coil (491).** Original gum, lightly  
hinged, radiant color

VERY FINE AND CHOICE ORIGINAL-GUM EXAMPLE OF  
THE 2-CENT ROTARY TYPE II HORIZONTAL COIL,  
SCOTT 491.

With 1994 P.F. certificate..... 2,500.00



2203



2205

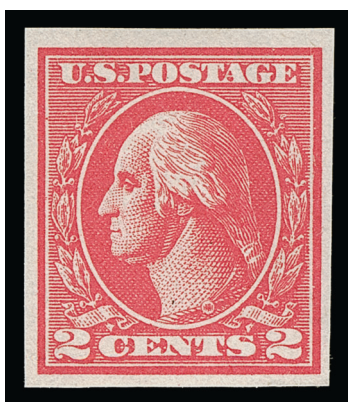
- 2203 ★★ **2c Deep Rose, Ty. Ia (500).** Mint  
N.H., brilliant color, fresh and Fine  
..... 570.00

- 2204 ★田 **5c Rose, Error (505).** Double error  
in block of twelve, errors Mint  
N.H., bright color, some telescoped  
perfs, still Very Fine..... 1,200.00

- 2205 ★★ **2c Carmine (519).** Mint N.H., rich  
color, fresh and Fine..... 900.00



2204



2206

2206 ★★ **2c Carmine, Ty. VII, Imperforate (534B).** Mint N.H., full margins to ample, radiant color

A FINE MINT NEVER-HINGED EXAMPLE OF THE 2-CENT TYPE VII IMPERFORATE ISSUE.

With copy of 1990 P.F. certificate for block..... 3,750.00



2207

2207 ★★ **2c Carmine Rose, Ty. II, Rotary Perf 11 x 10 (539).** Mint N.H., brilliant color on fresh paper

FINE AND RARE MINT NEVER-HINGED EXAMPLE OF THE 1919 2-CENT TYPE II ROTARY PRESS WASTE ISSUE, SCOTT 539.

With 1993 P.F. certificate..... 4,250.00



## 1922 AND LATER ISSUES



- 2208 ★★田 5c Dark Blue (557). Mint N.H. left plate no. 14933 block of six, pretty shade, vertical crease in selvage only, Fine..... 375.00
- 2209 ★★田 8c Olive Green (560). Mint N.H. right plate no. 16451 block of six, pretty pastel color, Fine ..... 850.00
- 2210 ★★田 25c Yellow Green (568). Mint N.H. bottom plate no. 17444 block of six, rich color, natural gum skips and bends, Very Fine..... 425.00
- 2211 ★田 30c Olive Brown (569). Top plate no. 14436 block of six, original gum, lightly hinged, deep rich color, few expertly reinforced perf separations, Very Fine ..... 500.00
- 2212 ★田 50c Lilac (570). Top plate no. 17480 and "F" block of six, original gum, lightly hinged, few sensibly reinforced perf separations in selvage, Fine-Very Fine ..... 550.00

- 2213 ★★田 \$1.00 Violet Black (571). Mint N.H. top plate no. 18682 and "F" block of six, rich color, few creases or natural paperfolds at top of selvage, Very Fine..... 525.00

2213







2214

2214 ★田 \$2.00 Deep Blue (572). Bottom plate no. 14306 block of six, rich color, choice centering, few natural gum bends, Extremely Fine ..... 700.00



2215

2215 ★★田 \$5.00 Carmine & Blue (573). Mint N.H. top arrow and double plate nos. 14326/14327 block of eight, brilliant color, well-balanced margins  
EXTREMELY FINE MINT NEVER-HINGED PLATE BLOCK OF EIGHT OF THE \$5.00 1922 ISSUE.  
With 1998 P.F. certificate..... 2,600.00





2216



2217

- 2216 ★★田 **10c Orange, Perf 10 (591)**. Mint N.H. bottom left plate no. 18533 block of four, vibrant color, well-balanced margins, Very Fine ..... 750.00
- 2217 ★★田 **5c Dark Blue & Black, Norse-American (621)**. Mint N.H. top arrow and plate nos. 16928/16961 block of eight, rich colors, fresh and Very Fine, with 2006 P.F. certificate ..... 700.00

- 2218 ★★田 **2c Carmine, Ty. II (634A)**. Mint N.H. bottom left plate no. 19747 block of four, rich color and detailed impression, well-balanced margins

VERY FINE AND CHOICE MINT NEVER-HINGED  
 PLATE BOCK OF THE 1928 2-CENT CARMINE TYPE II,  
 SCOTT 634A.

With 1996 P.F. certificate ..... 3,000.00



2218



2219EX

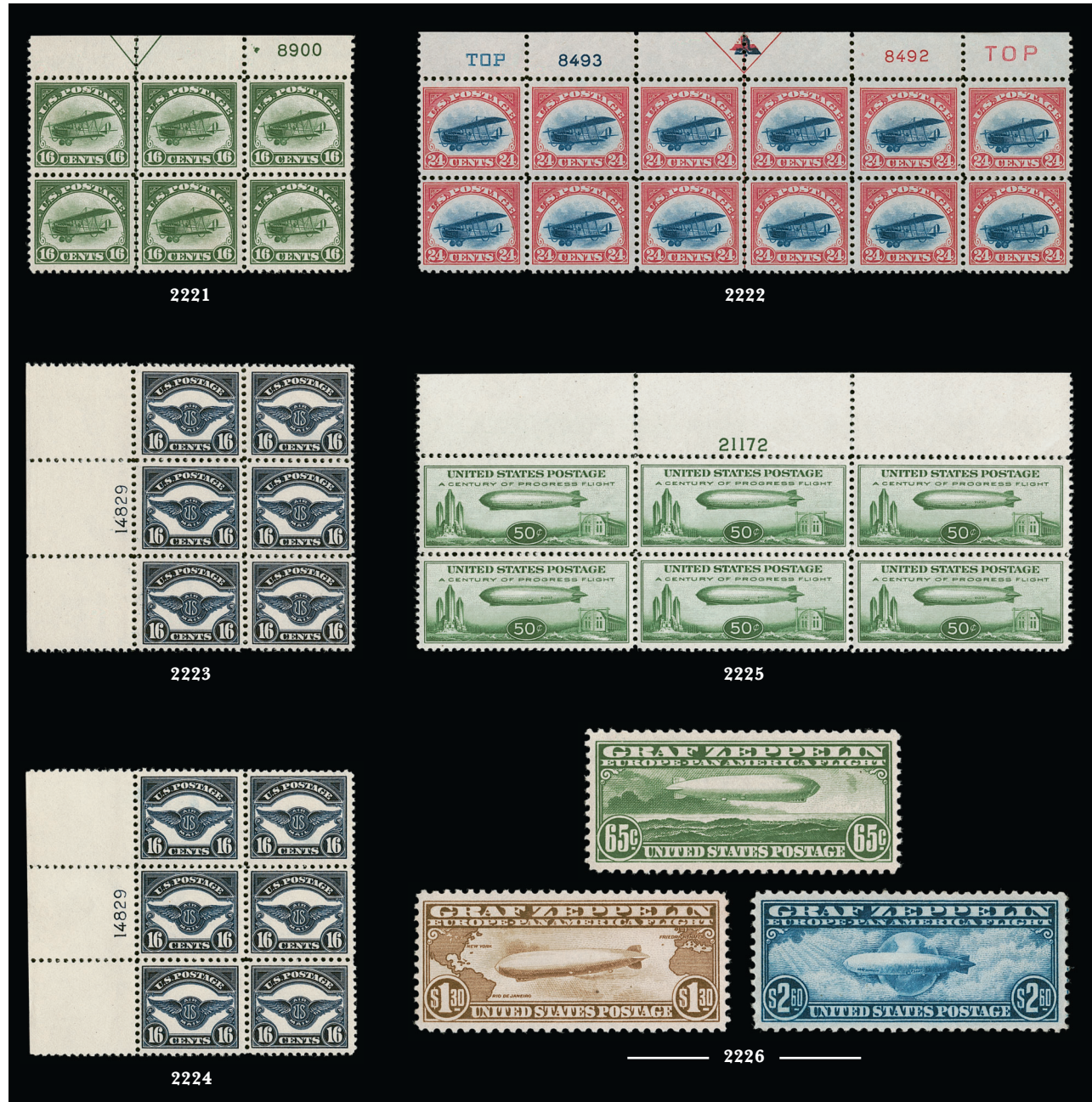


2220

- 2219 ★田 **1c-10c Kans., Nebr. Overprints (658-679)**. Set of plate blocks of four, original gum, few such as 6c Kans. and 7c and 8c Nebr. Mint N.H., the 10c Kans. Mint N.H. but with thin in selvage so counted as hinged, overall fresh and Fine-Very Fine set .....(Photo Ex/Website PDF) 7,225.00
- 2220 ★★ **8c Olive Green, Nebr. Ovpt. (677)**. Mint N.H. top right corner plate no. 18192 block of four, pretty shade, fresh and Very Fine ..... 550.00



## AIR POST



- 2221 ★★田 **16c Green, 1918 Air Post (C2).** Mint N.H. top plate no. 8900 and arrow block of six, pretty color, Very Fine ..... 1,350.00
- 2222 ★田 **24c Carmine Rose & Blue, 1918 Air Post (C3).** Top arrow, double plate no. 8492/8493 and double "Top" block of twelve, original gum, lightly hinged, bright colors, top left stamp natural gum skip, few natural inclusions, Very Fine ..... 1,250.00
- 2223 ★★田 **16c Dark Blue, 1923 Air Post (C5).** Mint N.H. left plate no. 14829 block of six, rich color, Very Fine and choice, with 2001 P.F. certificate ..... 2,000.00
- 2224 ★★田 **16c Dark Blue, 1923 Air Post (C5).** Mint N.H. left plate no. 14829 block of six, fresh and Fine ..... 2,000.00
- 2225 ★★田 **50c Chicago Zeppelin (C18).** Mint N.H. top plate no. 21172 block of six, choice centering, rich color, usual natural gum bends not mentioned on certificate, Extremely Fine, with 2006 P.F. certificate ..... 600.00
- 2226 ★★ **65c-\$2.60 Graf Zeppelin (C13-C15).** Mint N.H., rich colors, \$1.30 with light natural gum crease, \$2.60 with usual natural gum bends, Fine-Very Fine set ..... 1,675.00



## SPECIAL DELIVERY AND POSTAGE DUE



- 2227 ★ **10c Blue, Special Delivery (E1).** Original gum, rich color, well-balanced margins, light vertical crease at left near perfs, Extremely Fine appearance ..... 550.00
- 2228 ★ **10c Blue, Special Delivery (E2).** Original gum, lightly hinged, deep rich color, Very Fine ..... 500.00
- 2229 ★ **10c Blue, Special Delivery (E4).** Original gum, lightly hinged, rich color on bright paper, Very Fine ..... 850.00
- 2230 ★★ **10c Blue, Special Delivery (E5).** Mint N.H., intense shade on bright paper, wide margins, Very Fine, with 1989 P.F. certificate ..... 475.00
- 2231 ★ **2c Brown (J2).** Original gum, lightly hinged, brilliant color, Very Fine and choice, with 1992 P.F. certificate ..... 425.00
- 2232 ★★ **3c Brown (J3).** Mint N.H., brilliant color, small mark at center, Very Fine ..... 280.00
- 2233 ★ **5c Brown (J4).** Original gum, lightly hinged, bright shade and crisp impression, unusual overinked impression, exceptionally wide margins, few tiny natural inclusions, Extremely Fine, a huge stamp, with 1990 P.F. certificate ..... 800.00
- 2234 ★ **10c Brown (J5).** Original gum, bright shade, well-balanced margins, fresh and Extremely Fine, with 1992 P.F. certificate ..... 900.00
- 2235 ★ **30c Brown (J6).** Original gum, lightly hinged, detailed impression, Very Fine, with 1985 P.F. certificate ..... 400.00
- 2236 ★ **50c Brown (J7).** Original gum, lightly hinged, pretty shade, Very Fine, with 1992 P.F. certificate ..... 650.00



2237

2237 ★ **2c Deep Brown, Special Printing (J9).** Original gum, lightly hinged, choice centering, bright color and detailed impression on crisp paper

EXTREMELY FINE GEM. EASILY ONE OF THE FINEST EXAMPLES OF THE RARE 2-CENT POSTAGE DUE SPECIAL PRINTING IN EXISTENCE.

The reported sale figures for the 1c, 2c and 3c Postage Due Special Printings probably include orders filled with regular stamps. The 2c is one of the rarest of the set, especially in this superb original-gum condition.

Ex Petersen. With 1971 A.P.S. and 2005 P.F. certificates..... 15,000.00



2238

2238 ★ **10c Deep Brown, Special Printing (J12).** Original gum, lightly hinged, extraordinarily well-centered, classic Special Printing shade and fine impression

VERY FINE. REMARKABLY CHOICE QUALITY FOR THIS POSTAGE DUE RARITY.

Only 174 sold. Ex Przybyl. With 1995 P.S.E. and 2005 and 2011 P.F. certificates..... 6,750.00



2239

2239 ★ **30c Deep Brown, Special Printing (J13).** Original gum, intense shade and detailed impression, unusually choice centering with well-proportioned margins

EXTREMELY FINE GEM. THIS IS WITHOUT QUESTION ONE OF THE FINEST, IF NOT THE FINEST, EXAMPLE OF THE 30-CENT POSTAGE DUE SPECIAL PRINTING.

It has been estimated that no more than 179 examples of the 30c Postage Due Special Printing reached the public. The vast majority of these with original gum are faulty. This superb example, with its superior centering and remarkable freshness is a true condition rarity.

Ex "Hanover". With 2011 P.S.E. certificate (OGh, XF 90; SMQ \$15,000.00). This is the only graded example of this issue. A Power Search review found perhaps one or two others that compare favorably to this stamp. .... 7,000.00



2240

2240 ★ **50c Deep Brown, Special Printing (J14).** Original gum, lightly hinged, essentially perfect centering, deep shade and sharp impression on bright white paper

EXTREMELY FINE GEM. WONDERFULLY CHOICE CONDITION FOR THE RARE 50-CENT POSTAGE DUE SPECIAL PRINTING.

It has been estimated that no more than 179 examples of the 50c Postage Due Special Printing reached the public.

Ex "Vineyard". With 1965, 1999 and 2020 P.F. certificates ..... 7,000.00





2241



2242



2243

- 2241 ★★ **3c Red Brown (J17).** Mint N.H., crisp impression, bright color, fresh and Very Fine, with 1983 P.F. certificate..... 2,500.00
- 2242 ★ **5c Red Brown (J18).** Original gum, detailed impression, Very Fine, with 1990 P.F. certificate..... 550.00
- 2243 ★ **10c Red Brown (J19).** Original gum, lightly hinged, radiant color, well-balanced margins, Extremely Fine, with 1993 P.F. certificate..... 550.00



2244



2245



2246

- 2244 ★ **50c Red Brown (J21).** Original gum, lightly hinged, bright shade, fresh and Fine, with 1994 P.F. certificate..... 1,800.00
- 2245 ★ **30c Bright Claret (J27).** Original gum, lightly hinged, warm shade, Very Fine and choice, with 1987 P.F. certificate ..... 575.00
- 2246 ★ **50c Bright Claret (J28).** Original gum, lightly hinged, bright shade, well-proportioned margins, Extremely Fine, with 1992 P.F. certificate ..... 625.00





2247



2248



2249

- 2247 ★ **1c Vermilion (J29).** Original gum, lightly hinged, rich color on bright paper, fresh and Fine, ex Petersen, with 1997 P.F. certificate ..... 2,350.00
- 2248 ★ **2c Vermilion (J30).** Original gum, pretty shade, fresh and Very Fine, with 1997 P.F. certificate..... 775.00
- 2249 ★ **5c Deep Claret (J34).** Original gum, deep rich color and detailed impression, well-balanced margins, Extremely Fine, with 2001 P.F. certificate ..... 300.00



2250



2251



2252

- 2250 ★★ **10c Deep Claret (J35).** Mint N.H., intense shade and impression on bright paper, Very Fine and choice, with 2006 P.F. certificate (VF-XF 85) ..... 1,000.00
- 2251 ★ **30c Deep Claret (J36).** Original gum, lightly hinged, detailed impression, fresh and Very Fine, with 1991 P.F. certificate with selvage..... 550.00
- 2252 ★ **30c Deep Claret (J43).** Original gum, deep rich color and detailed impression, well-balanced margins, Extremely Fine ..... 600.00



2253



2254



2255

- 2253 ★ **3c Deep Claret (J47).** Original gum, intense shade, fresh and Very Fine, with 1995 P.F. certificate..... 625.00
- 2254 ★ **50c Deep Claret (J50).** Original gum, lightly hinged, rich color and detailed impression on bright paper, Fine, with 1998 P.F. certificate..... 1,100.00
- 2255 ★ **3c Carmine Lake (J54).** Original gum, lightly hinged, radiant color, three wide margins, Very Fine, with 1982 P.F. certificate..... 1,050.00

- 2256 ★ **50c Carmine Lake (J58).** Original gum, radiant color, choice centering for this difficult issue  
 VERY FINE AND CHOICE. THE 1914 50-CENT POSTAGE DUE WITH ORIGINAL GUM IS ONE OF THE RAREST OF ALL POSTAGE DUE STAMPS.  
 Scott No. J58 has the highest catalogue value of any regularly issued Postage Due stamp. Only the 1c-3c Special Printings, Scott Nos. J8-J10, catalogue higher. This stamp is the key to any meaningful collection of the Postage Due issues.  
 Ex Myerson. With 1980 and 2015 P.F. certificates (VF 80) ..... 11,500.00



2256



2257

- 2257 ★ **1c Rose (J59).** Vivid color, well-centered  
 VERY FINE AND CHOICE EXAMPLE OF THE 1916 ONE-CENT PERF 10 UNWATERMARKED POSTAGE DUE ISSUE.  
 The Postage Due stamps on unwatermarked paper were perforated with 10-gauge pins for a brief time. Well-centered original-gum examples are exceedingly rare.  
 Ex Hall. With 1992 P.F. certificate ..... 4,000.00

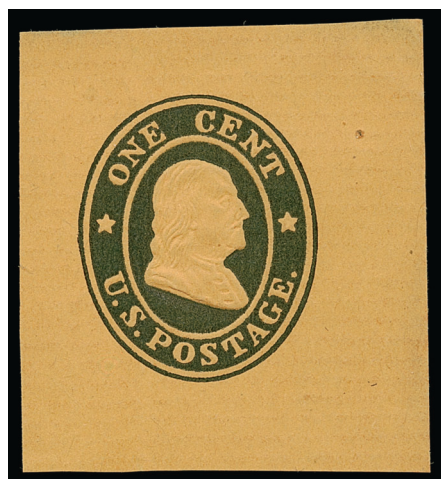


POSTAL STATIONERY

- 2258 ★ **3c Red on Buff, Die 3, Cut Square (U6; UPSS 9).** Unused, 37 x 38mm, bright color, fresh and Very Fine example of this rare Nesbitt die, which is nearly unattainable as an entire (only one unused example is recorded) ..... 3,750.00



2258



2259

- 2259 ★ **1c Blue on Orange Horizontally Laid, Die 12, Full Corner (W22; UPSS 40).** Unused, 36 x 39mm, fresh and Very Fine, scarce, with 2000 P.F. certificate ..... 3,000.00

- 2260 ★ **6c Red on White, Die 10, Full Corner (U30; UPSS 62).** Unused, 33 x 36mm, Very Fine and scarce, fewer than five mint entires are recorded and full corners are also very elusive ..... 1,800.00

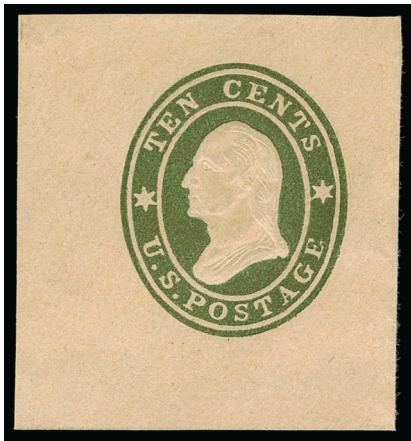


2260



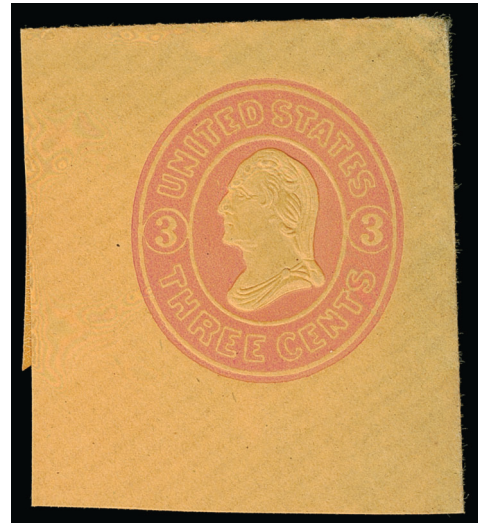
2261

- 2261 ★ **10c Green on White, Die 11, Cut Square (U32; UPSS 64).** Unused, 31 x 34mm, rich color, Very Fine and scarce, fewer than ten U32 unused entires exist and several of those have age spots or soiling, with 1999 P.F. certificate ..... 1,250.00



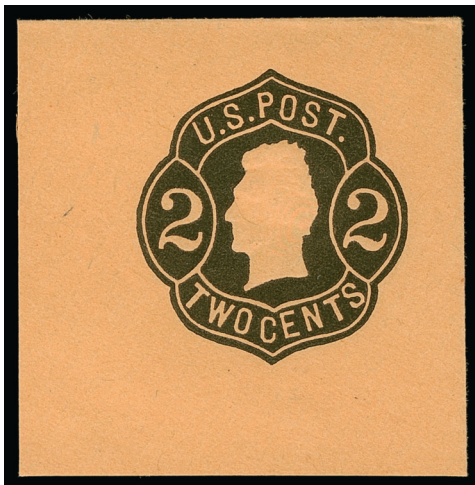
2262

- 2262 ★ **10c Green on Buff, Die 11, Full Corner (U33; UPSS 65).** Unused, 34 x 37mm, rich color, Very Fine, with 1999 P.F. certificate..... 1,250.00



2263

- 2263 ★ **3c Pink on Orange, Die 15, Full Corner (U37).** Unused, 37 x 44mm, bright color, some slight soiling at far right not noted on certificate, Very Fine, ex Curtis as an entire, with 2007 P.F. certificate as an entire (size 10) ..... 2,750.00



2264

- 2264 ★ **2c Black on Orange, Die 2, Full Corner (U49; UPSS 107).** Unused, 40 x 40mm, detailed impression, Very Fine, scarce, the UPSS Catalog reports no more than 15 entires recorded with many showing stains, soiling or other flaws, ex Curtis as an entire, with 1985 P.F. certificate as entire .. 1,750.00



2265

- 2265 ★ **1c Dark Blue on Cream, Die 46, Cut Square (U110; UPSS 256).** Unused, 32 x 35mm, with top flap, Very Fine, scarce, no full entires are known ..... 1,000.00





2266



2267



2268

- 2266 ★ **2c Brown on Cream, Die 48, Cut Square (U124; UPSS 298).** Unused, 33 x 36mm, bright color, Very Fine, rare, no full entires are known ..... 1,000.00
- 2267 ★ **2c Vermilion on Manila wrapper, Die 48, Cut Square (W127; UPSS 302).** Unused, 33 x 36mm, bight and fresh, Very Fine, the UPSS catalogue states there may be as many as ten unused examples known (and one used) with "some in poor condition" ..... 2,500.00
- 2268 ★ **2c Vermilion on White, Die 55, Cut Square (U156; UPSS 356).** Unused, 40 x 38mm, bright color, Very Fine and scarce cut square, UPSS Catalog reports only two mint entires exist, with 1996 P.F. certificate..... 1,250.00



2269



2270



2271

- 2269 ★ **2c Red on White, Die 78, Cut Square (U247; UPSS 752).** Unused, 35 x 39mm, bright color, Very Fine, scarce example of 2c Red on White with round "O" in "Two", fewer than ten mint entires are recorded..... 1,500.00
- 2270 ★ **2c Red on Amber, Die 78, Full Corner (U248; UPSS 753).** Unused, 43 x 43mm, brilliant color, Very Fine, scarce, ex "Scarsdale" as an entire, with 2000 P.F. certificate as entire, the 2012 UPSS Catalogue records only six unused entires including two with Wells, Fargo franks, this full corner reduces that number by one..... 2,500.00
- 2271 ★ **2c Brown on Blue, Die 82, Full Corner (U290; UPSS 857).** Unused, 36 x 38mm, vivid color on deep blue paper, Very Fine, a scarce issue with less than 15 entires reported, with 1996 P.F. certificate ..... 850.00



2272

- 2272 ★ **1c Blue on Blue, Die 83, Full Corner (U299; UPSS 893).** 36 x 45mm, clear watermark 12 which distinguishes this from UPSS 894, beautiful complementary color and paper, strong embossing slightly breaks the paper in Franklin's head

VERY FINE. A RARE FULL CORNER OF THE ONE-CENT BLUE ON BLUE ISSUE, SCOTT U299.

The 2018 UPSS catalogue reports five or fewer entires exist, though this is significantly higher than all reported numbers we have heard before. In addition, the Porter Venn census records two full corners, two cut squares and an entire with "Specimen".

Ex Cole, Dr. Summers, "Scarsdale" and Cook. With 2000 and 2013 P.F. certificates not noting the trivial paper breakage from the die impression ..... 10,000.00



2273

- 2273 ★ **2c Green on Blue, Die 87, Cut Square (U308; UPSS 920).** Unused, 32 x 38mm, rich color, two light creases

VERY FINE APPEARANCE. THIS IS ONE OF ONLY TWO UNUSED EXAMPLES OF THE DIE 87 2-CENT GREEN ON BLUE ISSUE — BOTH CUT SQUARES. NO UNUSED ENTIRES ARE KNOWN. A GREAT RARITY OF POSTAL STATIONERY COLLECTING.

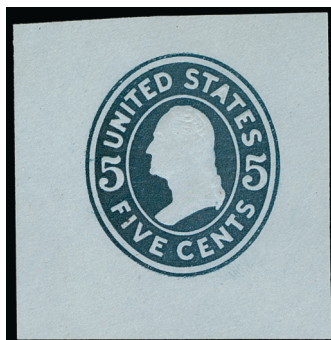
The 2018 UPSS catalogue reports no unused entires and two used entires. The Porter Venn census records two unused cut squares — the example offered here and the example that is ex Floyd and "Saddleback" and was last offered in our 2013 sale of the "Scarsdale" Collection. There are also two used cut squares recorded.

With 2000 P.F. certificate ..... 12,500.00





2274



2275



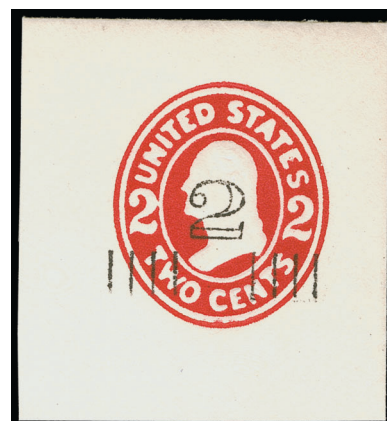
2276

- 2274 ★ **5c Columbian, Slate Brown Error of Color (U350a, UPSS 1176A).** Unused, 47 x 46mm, bright color, Very Fine and choice, with 1988 P.F. certificate ..... 700.00
- 2275 ★ **5c Blue on Blue, Die 126(B), Error of Paper, Cut Square (U418c; UPSS 2004).** Unused, 41 x 42mm, rich colors, Very Fine and very rare, this is only known as a cut square or full corner, we have offered only one other example since keeping computerized records (in our 2007 "Saddleback" sale), with 2001 P.F. certificate ..... 3,000.00
- 2276 ★ **2c on 1c Green on White, Die 127(A), Surcharge Ty. 3, Full Corner (U452; UPSS 2817).** Unused, 42 x 42mm, rich color, Very Fine and choice, very scarce, with 2015 P.F. certificate ..... 1,750.00

- 2277 ★ **2c on 2c Carmine on Blue, Die 118(C), Surcharge Ty. 3, Full Corner (U453; UPSS 2812).** Unused, 44 x 48mm, rich color

VERY FINE AND CHOICE. THIS IS ONE OF THE RAREST OF ALL SURCHARGED ISSUES.

With 1998 P.F. certificate. This is the first we have offered since keeping computerized issues — none was offered in our "Saddleback", "Scarsdale" or other name sales since 1994..... 3,500.00



2277



2278

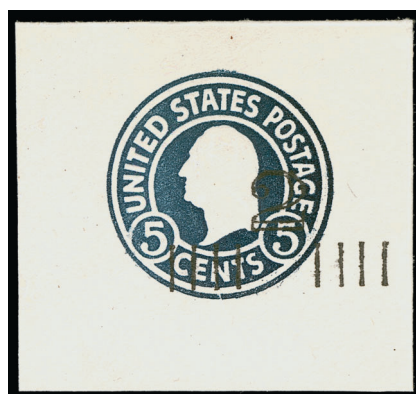


2279

- 2278 ★ **2c on 2c Carmine on Blue, Die 120(E), Surcharge Ty. 3, Full Corner (U453B; UPSS 2815).** Unused, 46 x 47mm, rich color, Very Fine and choice, scarce ..... 1,250.00
- 2279 ★ **2c on 2c Carmine on Oriental Buff, Die 120(E), Surcharge Ty. 3, Full Corner (U453C; UPSS 2814).** Unused, 63 x 62mm, huge margins all around, diagonal crease at bottom left far from the design and not mentioned on accompanying certificate, Very Fine, with 1996 P.S.E. certificate ..... 1,400.00



2280



2281



2282

- 2280 ★ **2c on 4c Chocolate on Amber, Die 108, Surcharge Ty. 3, Cut Square (U463).** Unused, 40 x 43mm, rich color, Very Fine, with 1993 P.F. certificate ..... 750.00
- 2281 ★ **2c on 2c Blue on White, Die 149, Surcharge Ty. 3, Full Corner (U464; UPSS 2913).** Unused, 47 x 44mm, Very Fine and choice, exceedingly scarce, with 1999 P.F. certificate ..... 850.00
- 2282 ★ **2c on 1c Green on white, Die 1, Surcharge Ty. 4, Cut Square (U465).** Unused, 45 x 42mm, bright color, Very Fine, scarce, with 1995 P.F. certificate..... 900.00



2283



2284



2285

- 2283 ★ **1½c on 1c Blue on White, Die 83, Surcharge Ty. 9, Full Corner (U507; UPSS 3182).** Unused, 43 x 43mm, bright color, Very Fine, scarce, it is reported that only 26 were surcharged, with 1998 P.F. certificate ..... 1,750.00
- 2284 ★ **1½c on 1c Green on White, Die 106, Surcharge Ty. 9, Cut Square (U508A).** Unused, 39 x 39mm, rich color and clear surcharge, Very Fine, a rare issue with only 18 believed to have been surcharged, with 1998 P.F. certificate..... 2,750.00
- 2285 ★ **3c Black on White, Post Office Official, Die PD5, Cut Square (UO8; UPSS PD42).** Unused, 40 x 40mm, bright shade, Very Fine and choice, ex Inman, with 2000 P.F. certificate ..... 1,750.00



## BALANCE LOTS

- 2286 ★ **Collection Balance, 1857-1932.** Album pages of unused stamps, including Nos. 24, 63, 65, 114, 145, 147, 156, 157, 182, 205, 212-218, 219-229, 230-239, 241, 242, 246-260, 264-275, 279-284, 285-291, 294-299, 300-311, 323-330, 331-342, 369, 374-382, 414-420, 422, 423, 424-440, 460, 461, 468-476, 477-480, 506-518, 523, 524, 533, 545-547, 551-573, 595, 630, 634A, 658-679, nice group of coils including some with certificates, few Mint N.H., a very few unused or regummed, few with small faults but overall fresh and Fine-Very Fine, 30 with certificates, Scott value in excess of .....**(Website PDF)** 35,000.00
- 2287 ★★ **Collection, 1932-2020.** Six Schaubek and two Scott albums containing a comprehensive collection of mostly Mint N.H. stamps, virtually complete from Scott 727 forward except for rarities, includes National Parks, Presidentials to \$5.00 and many others, also includes a nice group of souvenir sheets with Recalled Legends of the West, an excellent opportunity for someone looking to acquire a virtually complete collection of these later issues ...  
..... E. 750-1,000
- 2288 ★ **Back-of-Book Balance.** Album pages of unused stamps, including Air Pos virtually complete to 1991 except for the three Zepps including Nos. C1-C6 and C18, Special Delivery includes Nos. E3, E6-E23, F1, strength in Postage Dues including Nos. J1, J20, J24-J26, J33, J40-J42, J44-J46, J48-J49, J52-J53, J55-J57, J60-end, Parcel Post and Parcel Post Postage Dues complete, several Mint N.H., overall Fine-Very Fine with a few Extremely Fine, six with certificates, Scott value approximately \$8,000.00 .....**(Website PDF)** E. 3,000-4,000
- 2289 ★ **Postal Stationery Collection, 1853-1984.** Two Palo albums with slip covers of unused cut squares with a few full corners, a fantastic collection with high quality, many better items including Nos. U4, U11-U21, U23-U24, U28-U29, U38-U45, W51, U58-U73, U89, U90, U98, U106, U133, U135, U169, U195-U212, U226, U241, U243-U246, U249, U271, U273, U274, U276, U285, U566A, U476-U479, U486, U488, U492, U502-U506, also Air Post, Officials such as Nos. UO22, UO27-UO29, UO32-UO35, UO38-UO43, UO45, UO60, UO68, UO69, several other better, overall fresh and Fine-Very Fine, an excellent opportunity to acquire a substantial start to a collection of these issues, about a dozen with P.F. certificates, Scott value approximately ..... 40,000.00
- 2290 ★田 **Plate Blocks Balance.** Two Palo albums with slip covers of plate blocks, includes Nos. 367, 368, 370, 371 (2), 372, 548-550, 5512-556, 558-559, 561-567, 581-590, 614-619, 620-621, 622-623, 647-648, 692-701, 704-715, National parks perforated and imperf, Presidentials to \$5.00, stops in 1955 and includes No. 1053, many Mint N.H., overall fresh and Fine-Very Fine with a few Extremely Fine, a nice group ..... E. 2,000-3,000
- 2291 ★★田 **Modern Plate Blocks Collection.** Five Palo albums with slip covers of mostly Mint N.H. plate blocks, starting in 1956 and going thru about 1995, all attractively arranged, fresh and Very Fine group, an excellent opportunity for someone to fill in these later issues in an attractive set of albums ..... E. 300-400
- 2292 ★田 **Back-of-Book Plate Blocks.** Palo album pages of mostly Air Post and Special Delivery plate blocks, including Nos. C4, C7-C9, C10, C12, C16, C20-C22, Special Delivery includes No. E13, few Mint N.H., Fine-Very Fine, an attractive group ..... E. 300-400

END OF SALE — THANK YOU

# Grading Index to Sale 1256

Bold text means highest grade awarded



2002



2006



2007



2011



2013



2033



2040



2045



2056

Grade	Scott	Lot	Year/Service/Grade
98	11	2006	2011 PSE 98 NH
95	3	2002	2008 PSE 95 NGAI
<b>95</b>	<b>18</b>	<b>2007</b>	<b>2007 PSE 95 NH</b>
95	26	2011	2006 PF 95 OGph
95	30A	2013	2016 PSE 95 OGph
95	96	2045	2006 PF 95 OGph
95	107	2056	2007 PSE 95 OGph
90XQ	318	2151	2014 PF 90XQ OGph
90	44	2023	2005 PSE 90 NGAI
90	72	2033	2009 PSE 90 OGph
90	83	2037	2017 PSE 90 OGph
90	88	2039	2009 PSE 90 OGph
<b>90</b>	<b>89</b>	<b>2040</b>	<b>2011 PSE 90 OGph</b>
90	97	2046	2008 PSE 90 OGph
90	109	2058	2007 PF 90 OGph
90	119	2067	2020 PF 90 OGph
90	150	2089	2009 PF 90 OGph
90	188	2114	2006 PF 90 OGph
90	191	2116	2013 PSE 90 OGh
90	360	2172	2005 PF 90 OGph
90	J13	2239	2011 PSE 90 OGh
85	7	2004	2016 PF 85 OGph
85	111	2060	2013 PF 85 OG
85	318	2152	2016 PF 85 OGph
85	322	2154	2011 PF 85 OGph
85	J35	2250	2006 PF 85 NH
80	39	2018	2005 PF 80 OGph
80	41	2020	2014 PSE 80 NGAI
80	99	2048	2012 PF 80 OG
80	100	2049	2021 PSE 80 OGph
80	103	2052	2008 PSE 80 OGph
80	105	2054	2006 PF 80 OGph
80	J58	2256	2015 PF 80 OGph
75	171	2105	2018 PF 75 NGAI
50	176	2108	2009 PSE 50 NGAI





# BIDS

Use this form to submit absentee bids  
or to confirm telephone bids

# Sale 1256

June 8, 2022

PADDLE #

# 1

Please provide the following information:

NAME .....

ADDRESS .....

CITY/STATE/ZIP .....

PHONE ..... MOBILE .....

EMAIL .....

# 2

Have you purchased from us in the past 5 years? ☐ Yes (please go to Section 3)  
☐ No (references required below)

STAMP FIRM ..... PHONE .....

STAMP FIRM ..... PHONE .....

Please submit references at least **2 business days** before the sale. Bids from new clients will not be executed if satisfactory references are not received in time to be contacted.

# 3

- Enter the lot number and your corresponding maximum bid in the space below
- Use whole dollar amounts and bid according to the increments (see back of form)
- Bids do not include the **18% Buyer's Premium**, taxes, duty or shipping charges
- Absentee bids will advance at one increment over the next highest competing bid
- "Plus", "Break Tie" or "Buy" bids will not be executed
- Indicate any "Or" bids between lot number/bid entries and bracket your choices
- If you wish to limit the total amount of your bids, follow the instructions below

Lot #	Bid \$	Lot #	Bid \$	Lot #	Bid \$

☐ **Limit Bids:** Check this box if you wish to limit the total hammer price of your bids (excluding 18% Buyer's Premium, taxes, duty and shipping costs). Your bids will be executed until your bidding limit has been reached. The total amount you wish to bid is \$ .....

# 4

By signing this form, you agree to all of the Conditions of Sale printed in the sale catalogue (printed and digital), including but not limited to a) payment in the manner demanded by the Siegel firm, and b) payment of the 18% Buyer's Premium, any sales tax or customs duty, shipping costs, late charges and

other prescribed charges. You agree that your bids will be executed as a courtesy by Siegel, but you waive the right to make any claim against Siegel or its employees arising from these bids or your participation in the sale. You agree to honor all bids as submitted, regardless of any errors or omissions.

SIGNED ..... DATE .....

Mail the signed form to Siegel Bid Department, 6 West 48th St., 9th Floor, New York, NY 10036  
or email to [stamps@siegelauctions.com](mailto:stamps@siegelauctions.com)



# Additional Bids

# Sale 1256

June 8, 2022

PADDLE #

Lot #	Bid \$	Lot #	Bid \$	Lot #	Bid \$

## Shipping & Insurance

We will be pleased to arrange for shipping and transit insurance for purchases in this sale, except for lots marked or announced as "floor sale only." To expedite billing and delivery to hundreds of buyers in each sale, we use standard charges for postage and insurance under our policy. These charges are based on the package weight and mailing requirements, according to the schedule shown here. Our standard charges do not include a fee for our services, and they may be slightly more or less than the actual postage or Fedex fee. We ask all buyers to remit the invoiced amount for shipping and insurance.

Transit insurance is provided in all cases, except when the buyer has furnished us with documentation that insurance is effective under the buyer's own policy.

There will be no added insurance charge for shipments of less than \$75,000 value. Shipments valued in excess of \$75,000 may require supplemental insurance and/or special courier service, the estimated cost of which will be furnished to the buyer prior to shipment. If the buyer refuses to pay the estimated charges or furnish proof of self-insured coverage, the buyer will be responsible for picking up the lots at our office and any resulting sales tax.

### Standard Shipping Charges

Weight Class	Shipping Method	Charge
Up to 2 lbs.	Fedex Envelope	\$25
Over 2 lbs.	Fedex Box	\$35 - \$50*
Outside US	Fedex	\$50 - \$100**
Bulky Lots	Fedex Ground or Express	By weight
Value under \$500	Priority Mail Env	\$10.00
hammer	Priority Mail Box	\$25 - \$35

\* Up to \$75,000 value and up to 5 lbs; additional charge may apply to packages exceeding limits

\*\* Buyers outside United States are liable for any applicable customs duty and clearance charges. An accurate declaration of contents and value will be made on all packages and import/export documents. **Siegel may refuse to ship lots to certain countries with a high risk factor.**

2/2021

## Bidding Increments

The auctioneer may regulate the bidding at his discretion. However, to assist absentee bidders in establishing their maximum bids, the increments shown here will be used in most cases. We recommend that written bids conform to these increments—bids that do not will be reduced accordingly.

Bid	Increment	Bid	Increment
Up to \$200	\$10	\$20,000-30,000	\$1,000
\$200-500	\$25	\$30,000-70,000	\$2,500
\$500-1,000	\$50	\$70,000-140,000	\$5,000
\$1,000-3,000	\$100	\$140,000-500,000	\$10,000
\$3,000-7,000	\$250	\$500,000-\$1m	\$25,000
\$7,000-20,000	\$500	Above \$1m	Discretionary