

THE RICHIE PRAGER COLLECTION OF UNITED STATES HUNTING PERMIT STAMPS



SALE 1258 – TUESDAY, JUNE 14, 2022

Robert A. Siegel
AUCTION GALLERIES, INC.

THE RICHIE PRAGER COLLECTION OF UNITED STATES HUNTING PERMIT STAMPS



Sale 1258

Tuesday, June 14, 2022, at 1:30 p.m.

Hunting Permit Prints.....	3001-3028
Remarques and Artists' Signatures	3029-3057
Proofs	3058-3094
Panes and Souvenir Sheets	3095-3141
Graded Stamps.....	3142-3152
Errors and Varieties	3153-3167
Licenses and Covers	3168-3170A
Junior Duck Stamps.....	3171-3184
State Hunting Permits	3185-3218

Attendance permitted for fully vaccinated individuals and for unvaccinated individuals who follow all guidelines to prevent the spread of COVID-19

Live bidding will also be facilitated by telephone or internet

Presale viewing by appointment

Robert A. Siegel
AUCTION GALLERIES, INC.

6 West 48th Street, 9th Floor, New York, NY 10036
Phone (212) 753-6421 Email: stamps@siegelauctions.com

**Catalogues, internet bidding, resources, archives and the Siegel Encyclopedia at
siegelauctions.com**



Robert A. Siegel

AUCTION GALLERIES, INC.

6 WEST 48TH STREET, 9TH FLOOR, NEW YORK, N.Y. 10036

Phone (212) 753-6421 • Email: stamps@siegelauctions.com
siegelauctions.com



Scott R. Trepel
President
strepel
@siegelauctions.com



John P. Zuckerman
Senior Vice President
jzuckerman
@siegelauctions.com



Corey Long
Senior Vice President
clong
@siegelauctions.com

Siegel International
Dallas (214) 754-5991



Charles F. Shreve
Director, Siegel International
charles
@siegelauctions.com



Samantha Aragon
VP, Financial
samantha
@siegelauctions.com



Gina Cashia
VP, Operations
gina
@siegelauctions.com



Andrea Moreno
Operations
andrea
@siegelauctions.com



Andrew Titley
VP, Siegel International
andrew
@siegelauctions.com



Chris Anderson
International Specialist
chris
@siegelauctions.com

Scott R. Trepel Principal Auctioneer (licensed by NYC Dept. of Consumer Affairs, #795952)

Information for Bidders

Bidding

The following means are available for placing bids:

- 1) **Public Attendance:** Attendance is now permitted for fully vaccinated individuals and for unvaccinated individuals who follow all guidelines to prevent the spread of COVID-19. Live bidding will also be facilitated by mail, email, phone or internet.
- 2) **Live Internet Bidding:** Instructions for participating as a Live Internet Bidder are provided on the page opposite.
- 3) **Phone Bidding:** Bidders can be connected to the sale by phone and bid through a member of staff. Requests for phone bidding are subject to approval (please contact our office at least 24 hours before the sale). A signed Bid Form is required.
- 4) **Absentee Bids:** All bids received in advance of the sale, either by mail, fax, phone, email or internet, are Absentee Bids, which instruct the auctioneer to bid up to a specific amount on one or more lots in the sale. Absentee Bids sent by phone, fax or email should arrive at least one hour prior to the start of the sale session. Bids entered through Live Internet Bidding will be visible to the auctioneer during the sale. Written bids should be entered legibly on the Bid Form in the sale catalogue. Email and internet bids should be carefully typed and double-checked. All new bidders must provide references.

Presale Viewing by Appointment Only

To prevent the spread of COVID-19, presale viewing will be permitted for fully vaccinated individuals or for unvaccinated individuals who agree to follow all protective measures. To make an appointment and receive instructions, please contact us at (212) 753-6421 or by email. We reserve the right to refuse, cancel or postpone a request or appointment.

Expert Certification

Individual items offered without a PF or PSE certificate dated within the past 5 years may be purchased subject to certification of genuineness and our description. **Please refer to the Conditions of Sale and Grading Terms for policies governing certification.**

Shipping and Delivery

Procedures and charges for shipping lots are printed on the back of the Bid Form. **Bidders are responsible for all prescribed shipping charges and any applicable sales tax or customs duties.**

Price Realized

Prices realized are sent with each invoice. Bidders with email will receive a Bid Results report after the sale. Session results are posted immediately to siegelauctions.com

Live and Absentee Internet Bidding at Siegel

**ALL INTERNET BIDDING IS NOW HANDLED DIRECTLY FROM THE SIEGEL WEBSITE
SALES ARE NO LONGER LISTED ON STAMP AUCTION NETWORK**

**REGISTERED BIDDERS MAY LEAVE BIDS IN ADVANCE OF THE SALE
AND BID LIVE DURING THE AUCTION**

DOWNLOAD THE SIEGEL APP FROM THE APPLE OR GOOGLE PLAY STORES

This step-by-step guide will instruct you how to register and use the bidding interface.

Start by following the simple steps to become a registered internet bidder.

Once you have been approved for bidding, you can leave bids in advance of the sale, listen to the auction and place bids live with the click of a mouse.

Registering with Siegel Auction Galleries

To bid, you must be registered and approved by Siegel.

To decide what you need to do, choose the description below that best fits you.



**I've already registered with Siegel and
have been approved by Siegel for internet bidding**

Internet bidding works by allowing registered bidders to observe and place bids, either before the sale or in real-time during the auction.

Live Internet Bidding will work with any browser on both PC and Mac operating systems, or with our app..

Before bidding by internet for the first time, we recommend observing an auction in progress. This will help you develop a feel for the sale tempo and bidding interface.

I'm a Siegel client, but I'm not registered to bid live

Go to bid.siegelauctions.com and click on **Login** at the top. Then click on the link for **Sign Up Now**. We will match your new signup to your existing account.

Log in and participate in the auction at bid.siegelauctions.com

When you're logged on as an internet bidder, the bidding interface shows a photo and description of the lot, the current bid (and your bidding status), options for placing competitive bids and buttons with bid increments.

- After you click on a bid amount, the auctioneer is immediately notified of your bid.
- Retracting a bid is not acceptable, so please bid carefully.
- You can track prior realizations from the bidding screen.



I want to become a Siegel client and bid in auctions

Go to bid.siegelauctions.com and click on **Login** at the top. Then click on the link for **Sign Up Now**. You will need to register and provide trade and banking references.

"System Down" or "Lost Connection" events do occasionally happen.

If you have any problems with Live Internet Bidding please call 212-753-6421 for immediate assistance.

Conditions of Sale (please read carefully before bidding)

THE PROPERTY IN THIS CATALOGUE WILL BE OFFERED AT PUBLIC AUCTION BY ROBERT A. SIEGEL AUCTION GALLERIES, INC. ("GALLERIES") ON BEHALF OF VARIOUS CONSIGNORS AND ITSELF OR AFFILIATED COMPANIES. BY BIDDING ON ANY LOT, WHETHER DIRECTLY OR THROUGH A THIRD PARTY, IN PERSON, BY TELEPHONE, FACSIMILE, INTERNET OR BY ANY OTHER MEANS, THE BIDDER ACKNOWLEDGES AND AGREES TO ALL OF THE FOLLOWING CONDITIONS OF SALE.

1. The highest bidder acknowledged by the auctioneer shall be the buyer. The term "final bid" means the last bid acknowledged by the auctioneer, which is normally the highest bid offered. **The purchase price payable by the buyer will be the sum of the final bid and a commission of 18% of the final bid ("buyer's premium"), together with any sales tax, use tax or customs duties due on the sale.**

2. The auctioneer has the right to reject any bid, to advance the bidding at his discretion and, in the event of a dispute, to determine the successful bidder, to continue the bidding or to reoffer and resell the lot in dispute. The Galleries' record of the final sale shall be conclusive.

3. All bids are per numbered lot in the catalogue unless otherwise announced by the auctioneer at the time of sale. The right is reserved to group two or more lots, to withdraw any lot or lots from the sale, or to act on behalf of the seller. The Galleries will execute bidding instructions on behalf of clients, but will not be responsible for the failure to execute such bids or for any errors in the execution of such bids.

4. **Lots with numbers followed by the symbol ° are offered subject to a confidential minimum bid ("reserve"), below which the lot will not be sold. The absence of the symbol ° means that the lot is offered without a reserve. If there is no reserve, the auctioneer has sole discretion to establish a minimum opening bid and may refuse an offer of less than half of the published estimate. Any lot that does not reach its reserve or opening bid requested by the auctioneer will be announced as "passed" and excluded from the prices realized lists after the sale. The Galleries may have a direct or indirect ownership interest in any or all lots in the sale resulting from an advance of monies or goods-in-trade or a guarantee of minimum net proceeds made by the Galleries to the seller.**

5. Subject to the exclusions listed in 5(A), the Galleries will accept the return of lots which, subject to the Galleries' sole judgment, have been misidentified or which have obvious faults that were present when the lot was in the Galleries' custody, but not so noted in the lot description. **All disputed lots must be received by the Galleries intact with the original packing material within 5 days of delivery to the buyer but no later than 30 days from the sale date. (5A) EXCLUSIONS:** The following lots may not be returned for any reason, or may not be returned for the reasons stated: (i) lots containing 5 or more items; (ii) lots from buyers who registered for the pre-sale exhibition or received lots by postal viewing, thereby having had the opportunity to inspect them before the sale; (iii) any lot described with "faults," "defects" or a specific fault may not be returned because of any secondary fault; (iv) photographed lots may not be returned because of centering, margins, short/nibbed perforations or other factors shown in the photos; (v) the color of the item does not match the color photo in the sale catalogue or website listing; (vi) the description contains inaccurate information about the quantity known or reported; or (vii) a certification service grades a stamp lower than the grade stated in the description or on an accompanying certificate.

6. Successful bidders, unless they have established credit with the Galleries prior to the sale, must make full payment in cleared funds before the lots will be delivered. Buyers not known to the Galleries must make payment in full within 3 days from the date of sale. **The Galleries retains the right to demand a cash deposit from anyone prior to bidder registration and/or to demand payment at the time the lot is knocked down, for any reason whatsoever.** In the event that any buyer refuses or fails to make payment in cash for any lot at the time it is knocked down to him, the auctioneer reserves the right to reoffer the lot immediately for sale to the highest bidder. **Credit cards (Visa, Mastercard and Discover only) can be accepted as payment, but will be subject to a 3% non-refundable Convenience Fee, which will be added to the total of the entire invoice (including hammer price, buyer's premium, shipping and transit insurance charges and any applicable taxes). The buyer waives the right to dispute all credit card charges.**

7. If the purchase price has not been paid within the time limit specified above, nor lots taken up within 7 days from the date of sale, the lots may be resold by whatever means deemed appropriate by the Galleries, and any loss incurred from resale will be charged to the defaulting buyer, and/or the Galleries may seek any other remedy prescribed by law to enforce payment. **Any account more than 30 days in arrears will be subject to a late payment charge of 1½% per month as long as the account remains in arrears. Any expenses incurred in securing payment from delinquent accounts will be charged to the defaulter.** A fee of \$250.00 will be charged for a check returned for insufficient funds.

8. All lots are sold as genuine. **Any lot accompanied by a certificate issued by The Philatelic Foundation or by Professional Stamp Experts within 5 years of the sale date is sold "as is" and in accordance with the description on the certificate. Such lots may not be returned for any reason, including but not limited to a contrary certificate of opinion or change in grade.** Buyers may request a certificate for a lot containing not more than one item, which does not have a P.F. or P.S.E. certificate (dated as above), provided that the following conditions are met: (i) the purchase price must be paid in full, (ii) if submitted by the buyer, the lot must be submitted to an acceptable expertizing service with a properly executed application form within 21 days of the sale, (iii) a copy of the application form must be given to the Galleries, (iv) the Galleries retains the right to resubmit the item for reconsideration, without time limit or other restrictions, for the purpose of obtaining a satisfactory opinion, (v) lots submitted for certification will be considered cleared 90 days from the date of sale, whether or not a certificate has been issued, unless the Galleries issues written approval of a further extension of return privileges, and (vi) in the event the lot is determined to be misidentified or misdescribed, pursuant to 5 and 5(A) of these Conditions, the Galleries will issue a refund to the buyer for the full purchase price and actual certification fees, but the reimbursement for certificate fees (and related costs) shall not exceed 10% of the hammer price of the lot. **Changes to a grade by the same certification service or a different grade from another certification service are not grounds for returning a lot.**

9. Until paid for in full, all lots remain the property of the Galleries on behalf of the seller.

10. Agents executing bids on behalf of clients may also be held responsible for all purchases made on behalf of clients, unless otherwise arranged prior to the sale.

11. **The buyer assumes all risk for delivery of purchased lots and agrees to pay for prescribed shipping costs. Buyers who receive lots in the U.S. are obligated to pay whatever sales tax or compensating use tax might be due, at any time, and buyers outside the U.S. are responsible for all customs duties.**

12. **The bidder consents that any action or proceeding against it may be commenced and maintained in any court within the State of New York or in the United States District Court for the Southern District of New York, that the courts of the State of New York and United States District Court for the Southern District of New York shall have jurisdiction with respect to the subject matter hereof and the person of the bidder. The bidder agrees not to assert any defense to any action or proceeding initiated by Galleries based upon improper venue or inconvenient forum. The bidder agrees that any action brought by the bidder shall be commenced and maintained only in a Federal Court in the United States District Court for the Southern District of New York or the State Court in the county in which Galleries has its principal place of business in New York. The bidder agrees not to use a public conflict resolution service and not to use any form of social media to publish comments or information about the Galleries and its employees which might harm the Galleries' reputation or business. These Conditions of Sale shall be governed by and construed in accordance with the substantive laws of the State of New York, and shall constitute an agreement that shall be binding on the parties, and their respective heirs, administrators, distributees, successors and assignees.**

SCOTT R. TREPEL, Principal Auctioneer (NYC License No. 795952)
N.Y.C. Department of Consumer Affairs
80 Lafayette Street, New York, N.Y. 10013
Telephone (212) 577-0111

Revised 9/2018

Grades, Abbreviations and Values Used in Descriptions

Grades and Centering

Our descriptions contain detailed information and observations about each item's condition. We have also assigned grades to stamps and covers, which reflect our subjective assessment. For stamps, the margin width, centering and gum are described and graded according to generally-accepted standards (an approximate correlation to numeric grades is provided at right). Although we believe our grades are accurate, they are not always exactly aligned with third-party grading terms or standards for all issues. **A lot may not be returned because a certification service grades a stamp lower than the grade stated in the description. Information from the P.S.E. Stamp Market Quarterly and P.S.E. Population ReportSM is the most current available, but lots may not be returned due to errors or changes in statistics or data.**

Extremely Fine Gem (90-100): The term “Gem” describes condition that is the finest possible for the issue. This term is equivalent to “Superb” used by grading services.







Extremely Fine (80-90): Exceptionally large/wide margins or near perfect centering.

Very Fine (70-85): Normal-size margins for the issue and well-centered with the design a bit closer to one side. “Very Fine and choice” applies to stamps that have desirable traits such as rich color, sharp impression, freshness or clarity of cancel.

Fine (60-70): Smaller than usual margins or noticeably off center. Pre-1890 issues may have the design touched in places.

Very Good (below 60): Attractive appearance, but margins or perforations cut into the design.

Guide to Gum Condition

Gum Categories:	MINT N.H.	ORIGINAL GUM (O.G.)				NO GUM
	 Mint Never Hinged <i>Free from any disturbance</i>	 Lightly Hinged <i>Faint impression of a removed hinge over a small area</i>	 Hinge Mark or Remnant <i>Prominent hinged spot with part or all of the hinge remaining</i>	 Part o.g. <i>Approximately half or more of the gum intact</i>	 Small part o.g. <i>Approximately less than half of the gum intact</i>	 No gum <i>Only if issued with gum</i>
Catalogue Symbol:	★ ★	★	★	★	★	(★)
PRE-1890 ISSUES	<i>Pre-1890 stamps in these categories trade at a premium over Scott value</i>			Scott Value for “O.G.”		Scott “No Gum” Values thru No. 218
1890-1935 ISSUES	Scott “Never Hinged” Values for Nos. 219-771	Scott Value for “O.G.” (Actual value will be affected by the degree of hinging)		Disturbed Original Gum: Gum showing noticeable effects of humidity, climate or hinging over more than half of the gum. The significance of gum disturbance in valuing a stamp in any of the Original Gum categories depends on the degree of disturbance, the rarity and normal gum condition of the issue and other variables affecting quality. For example, stamps issued in tropical climates are expected to have some		
1935 TO DATE	Scott Value for “Unused”					

Covers

Minor nicks, short edge tears, flap tears and slight reduction at one side are normal conditions for 19th century envelopes. Folded letters should be expected to have at least one file fold. Light cleaning of covers and small mends along the edges are accepted forms of conservation. Unusual covers may have a common stamp with a slight crease or tiny tear. **These flaws exist in virtually all 19th century covers and are not always described. They are not grounds for return.**

Catalogue Values and Estimates

Unless otherwise noted, the currently available *Scott Catalogue* values are quoted in dollars with a decimal point. Other catalogues are often used for foreign countries or specialized areas and are referred to by their common name: *Stanley Gibbons* (SG), *Dietz*, *American Air Mail Catalogue* (AAMC), *Michel*, *Zumstein*, *Facit*, etc. Estimates are indicated with an “E.” and reflect our conservative valuation in dollars. Reserves will never exceed the low end of the estimate range; they will sometimes exceed Scott Catalogue value for stamps in Extremely Fine condition.

Because of certain pricing inconsistencies in the *Scott Catalogue*—for example, blocks that have no gum, the absence of premiums for Mint N.H. items, etc.—we cannot guarantee the accuracy of values quoted for multiples, specialized items and collection lots. We generally try to be conservative, but buyers may not return a lot because of a discrepancy in catalogue value due to Scott pricing inconsistencies.

Symbols and Abbreviations (see chart above for gum symbols)

⊞	Block	E	Essay	pmk.	Postmark	No.	Scott Catalogue Number
⊞	Cover	P	Proof	cds	Circular Datestamp	hs	Handstamp
FC	Fancy Cancel	TC	Trial Color Proof	var.	Variety	ms.	Manuscript

THE RICHIE PRAGER COLLECTION OF UNITED STATES HUNTING PERMIT STAMPS



Richie Prager was born into a household of conservationists well before the current social awareness. His father was a marine biologist for the EPA and his mother was the local town planner. Richie's mother was also a stamp collector who engaged Richie into the hobby at a young age. Her best advice was to focus on a stamp series that interested him. This advice came at the same time at which Richie had to buy his first Duck Stamp to hunt waterfowl in Southern Rhode Island where he grew up. At first glance of the 1976-77 Duck Stamp (RW43), Richie knew then and there he found his passion.

The Federal Duck Stamp Program is arguably the most successful and impactful conservation program in the United States, if not the world. The program hosts an annual art competition, the only U.S. Government sponsored art competition. The winning artwork's image is used for the annual Migratory Bird Hunting and Conservation Stamp. Commonly known as the Federal Duck Stamp, the revenue stamp is required for waterfowl hunting and provides access to many Federal conservation lands. The Federal program has been running uninterrupted since 1934 and has raised more than one billion dollars and procured over six million acres of conservation land across all fifty U.S. states. The U.S. Federal Program is one of several programs across State, Municipality, Indian Reservation, and Military levels as well as other game revenue and foreign government revenue programs whose mission is related to conservation.

Over the last 45 years, Richie has amassed a comprehensive collection inclusive of many sheets, proofs, plate blocks, plate number series, errors, and single stamps; many of which are considered rarities. Many years ago, Richie took interest in the winning artists of the Federal contest. The affinity to the artists led to collecting many artist signed stamps, prints and the original winning artwork itself. In fact, this past March, the Bruce Museum in Greenwich, Connecticut, announced that Richie donated 68 original artworks related to the Federal program.

At this point Richie has turned his interest in collaborating with The Bruce Museum to take the collection on the road to help educate viewers on the conservation efforts of the U.S. Duck Stamp program with hopes of generating more conservation dollars. This auction includes many of the jewels of Richie's stamp and print collection. The proceeds of the auction are partially earmarked to help with the education mission as well as Richie's determination to treasure hunt for original winning artwork not yet with the Bruce Museum.

AFTERNOON SESSION (LOTS 3001-3128)
TUESDAY, JUNE 14, 2022, AT 1:30 P.M.

THE RICHIE PRAGER COLLECTION OF
UNITED STATES HUNTING PERMIT STAMPS

HUNTING PERMIT PRINTS



3001

3001 **1934, Mallards Dropping In, First Edition (RW1).** Etching, design size 216 x 149mm on 270 x 213mm paper, pencil manuscript "Design for first Federal 'Duck Stamp' - 1934" and **signed Ding Darling**, exceptionally fresh

EXTREMELY FINE AND BEAUTIFUL SIGNED PRINT OF THE FIRST FEDERAL HUNTING PERMIT ISSUE DESIGN.

There were actually two editions of this print, as the plate was re-surfaced several years after it was initially created and additional prints were made (second edition, or second state). This is from the first edition. Both editions are very scarce. In fact, the often quoted number of 300 total printed may well be overstated. A letter from Darling in the the William Webster collection stated that fewer than 100 first edition prints were made before the plate wore out (see waterfowlstamp-sandmore.com for a full commentary on the 1934 prints).

Stearns and Fink value \$6,000.00..... E. 1,500-2,000

3002 **1934, Mallards Dropping In, First Edition (RW1).** Etching, design size 216 x 149mm, mounted and framed with RW1 stamp below, pencil manuscript "Design for first Federal 'Duck Stamp' - 1934" and **signed Ding Darling**

VERY FINE. A FRESH AND HIGH-QUALITY SIGNED PRINT OF THE FIRST FEDERAL HUNTING PERMIT ISSUE DESIGN.

There were actually two editions of this print, as the plate was re-surfaced several years after it was initially created and additional prints were made (second edition, or second state). This is from the first edition. Both editions are very scarce. In fact, the often quoted number of 300 total printed may well be overstated. A letter from Darling in the the William Webster collection stated that fewer than 100 first edition prints were made before the plate wore out (see waterfowlstampsandmore.com for a full commentary on the 1934 prints).

Stearns and Fink value \$6,000.00.....
..... E. 1,000-1,500



3002



3003

3003 **1935, Canvasbacks Taking to Flight (RW2).** Etching, **signed Frank W. Benson** in pencil at bottom left, image area 125 x 75mm, mounted and framed with **signed** stamp below, beautiful and fresh (scan shows some reflection)

VERY FINE AND RARE SIGNED PRINT OF THE SECOND FEDERAL HUNTING PERMIT ISSUE DESIGN.

This was produced as an unnumbered edition of 100 and is the rarest design-different Duck Stamp print. We have offered only a handful of examples over the years, and all but one had condition problems.

Stearns and Fink value \$9,500.00..... E. 3,000-4,000



3004



3005



3006

- 3004 **1936, Canada Geese in Flight, or "Coming In" (RW3).** Etching, signed **Richard E. Bishop** in pencil with "Federal Duck Stamp Design" in pencil at bottom left, "Richard E. Bishop C" copyright notation at bottom of image which is 205 x 125mm, paper size 250 x 186mm, fresh and Very Fine, Stearns and Fink value \$1,800.00..... E. 400-500
- 3005 **1937, Scaup Ducks Taking to Flight (RW4).** Print with printed copyright notice at top left and "Edition limited to 260 Proofs", signed **J D Knap** in pencil with "Federal Duck Stamp - 1937" in pencil at bottom left, image area 218 x 145mm, paper size 280 x 212mm, prior mounting adherences in margins, otherwise Very Fine and scarce, the artist would later suffer a stroke and would then use block printing, Stearns and Fink value \$3,000.00 E. 300-400
- 3006 **1938, Pintail Drake and Hen Alighting (RW5).** Etching, signed **Roland Clark** in pencil with "Duck Stamp Design 1938" in pencil at bottom left and "Eagle" at bottom right, image area 275 x 175mm, paper size 365 x 268mm, small repair in bottom left margin and some prior mounting thinning in left margin, neither is particularly noticeable from the front, still Very Fine and rare, possibly 300 issued, Stearns and Fink value \$3,800.00 E. 400-500



3007

3007

1940, Black Mallards, First Edition (RW7). Lithograph, signed **F. L. Jaques** in pencil with "Federal Duck Stamp Design 1940" in pencil at bottom left, image area 276 x 218mm, paper size 341 x 300mm, bright and pristine

EXTREMELY FINE. THE FINER OF ONLY TWO FIRST EDITION PRINTS OF THE 1940 FRANCIS LEE JAQUES FEDERAL DUCK STAMP DESIGN WE HAVE OFFERED. ONLY APPROXIMATELY 30 WERE PRODUCED, MAKING THIS ONE OF THE RAREST DUCK PRINTS.

The 1940 first and second edition prints are extremely rare, with approximately 30 of each produced. The first edition is of course the most desirable as the earliest edition. There were a total of three editions, each represented in the Prager collection. The differences between the three are found in the top wing of the right duck, where it meets the body.

This is one of only two examples we have offered since keeping computerized records. The other was part of the William Webster collection (Sale 1121, lot 2063). It was also fresh but had a rectangular cut-out at the bottom.

Stearns and Fink value \$15,000.00 E. 5,000-7,500



3008

3008

1940, Black Mallards, Second Edition (RW7). Lithograph, signed **F. L. Jaques** in pencil with "Federal Duck Stamp Design 1940" in pencil at bottom left, image area 276 x 218mm, paper size 303 x 272mm, faint outline outside design

VERY FINE AND VERY RARE SECOND EDITION PRINT OF THE 1940 FRANCIS LEE JAQUES FEDERAL DUCK STAMP DESIGN. ONLY APPROXIMATELY 30 WERE PRODUCED,

The 1940 first and second edition prints are extremely rare, with approximately 30 of each produced. There were a total of three editions. The differences between the three are found in the top wing of the right duck, where it meets the body.

Stearns and Fink value \$8,000.00 E. 3,000-4,000



3009

1940, Black Mallards, Third Edition (RW7). Lithograph, signed **F. L. Jaques** in pencil, image area 276 x 215mm, paper size 403 x 270mm, some very faint yellowing along top edge from prior mounting, Very Fine, approximately 200 were produced, the differences between the three editions of the 1940 prints are found in the top wing of the right duck, where it meets the body, Stearns and Fink value \$4,000.00..... E. 400-500

3009

3010

1941, Family of Ruddy Ducks, First and Second Editions (RW8). Etchings, first edition with ducks swimming right to left (mirror of the issued design and the second edition print), signed **E. R. Kalmbach** in pencil with "Duck Stamp Design, 1941" in pencil at bottom left, image area 223 x 166mm, paper size 318 x 265mm, second edition with ducks swimming left to right as on the stamp, image area 229 x 181mm, signed **E. R. Kalmbach** in pencil at bottom right and "Migratory Bird Hunting Stamp 1941-42" in pencil at bottom left, bright and fresh

VERY FINE PAIR OF PRINTS. THE FIRST EDITION 1941 FEDERAL HUNTING PERMIT PRINT, WITH DUCKS SWIMMING RIGHT TO LEFT, IS EXTREMELY RARE.

It is reported that approximately 100 of each edition were printed, but we suspect the first edition is much rarer than that information indicates.

Combined Stearns and Fink value \$6,500.00.....
.....(Photo Ex) E. 1,500-2,000



3010EX



3011



3012

3011

1942, American Widgeon, First Edition (RW9). Etching, signed **A. Lassell Ripley** in pencil with "American Widgeon" in pencil at bottom left, image area 215 x 150mm, 23mm margins all around, bright and fresh, Very Fine, Stearns and Fink value \$1,800.00 E. 400-500

3012

1943, Wood Ducks, Second Edition (RW10). First state of the second edition etching without "II", signed **Walter E. Bohl** in pencil with "Federal Duck Stamp Design - 1943" in pencil at bottom left, image area 173 x 125mm, mounted and framed with stamp below (scan shows reflection from the glass), Very Fine, both the first edition and the second edition (first state) of this print are very scarce, Stearns and Fink value \$750.00 E. 400-500



3013

- 3013 **1945, Shoveller Ducks in Flight (RW12).** Print, signed **Owen J. Gromme** in pencil with "Federal Duck Stamp Design 1945" in pencil at bottom left and "10" print no. at far bottom left, image area 178 x 128mm on paper measuring 250 x 198mm, printed "Copyright 1945 by The F. H. Bresler Co., Milwaukee" at top left, absolutely pristine

EXTREMELY FINE EXAMPLE OF THE 1945 FEDERAL DUCK STAMP PRINT AND RARE IN A SIZE SHOWING THE NUMBER.

The Stearns and Fink album notes that this print is "possibly" numbered but that the numbering could be cut away or covered. The examples in this sale with "9" and "10" (of 250) and another example with "146" from the William Webster collection demonstrate that they were numbered. This is noted by Stearns and Fink as the second most difficult print to obtain.

Stearns and Fink value \$7,000.00. E. 3,000-4,000



3014

- 3014 **1945, Shoveller Ducks in Flight (RW12).** Print, signed **Owen J. Gromme** in pencil with "Federal Duck Stamp Design 1945" in pencil at bottom left and "9" print no. at far bottom left, image area 178 x 128mm on paper measuring 250 x 200mm, printed "Copyright 1945 by The F.H. Bresler Co., Milwaukee" at top left, some mounting tape remnants on back at top

EXTREMELY FINE EXAMPLE OF THE 1945 FEDERAL DUCK STAMP PRINT AND RARE IN A SIZE SHOWING THE NUMBER.

The Stearns and Fink album notes that this print is "possibly" numbered but that the numbering could be cut away or covered. The examples in this sale with "9" and "10" (of 250) and another example with "146" from the William Webster collection demonstrates that they were numbered. This is noted by Stearns and Fink as the second most difficult print to obtain.

Stearns and Fink value \$7,000.00. E. 3,000-4,000



- 3015 **1946, Redhead Ducks, First Edition (RW13).** Lithograph, **signed Bob Hines** in pencil at bottom with "1946", also "Redheads" and A-76 number at bottom left, design size 278 x 205mm, 23mm margins all around, Extremely Fine, only approximately 300 were issued, Stearns and Fink value \$1,800.00, accompanied by an artist signed RW13 stamp E. 400-500
- 3016 **1947, Snow Geese, First Edition (RW14).** Print, **signed Jack Murray 1947** in pencil with "From Beyond the North Wind" in pencil at bottom left, image area 290 x 205mm, paper size 375 x 290mm, some minor mounting adherence along edges on back at bottom left outside the design, Very Fine and scarce, only 300 were issued and no further editions were printed, Stearns and Fink value \$2,700.00 E. 400-500
- 3017 **1948, Buffleheads in Flight, First Edition (RW15).** Lithograph, **signed Maynard Reece** in pencil with "Duck Stamp Design - 1948" in pencil at bottom left, image area 234 x 171mm, paper size 306 x 280mm, pristine and Extremely Fine, scarce with only 200 printed, Stearns and Fink value \$2,000.00 E. 500-750
- 3018 **1950, Trumpeter Swans in Flight, First Edition (RW17).** Print, **signed Walter A. Weber** at bottom right with "Duck Stamp Design 1950" at bottom left, both in pen, design size 178 x 127mm on 256 x 201mm paper, printed "Copyright 1950 Walter A. Weber" at top left, fresh and Very Fine, while this was reportedly printed in a quantity of 500, only approximately 250 were signed and the balance was lost, Stearns and Fink value \$1,900.00 E. 500-750
- 3019 **1951, Gadwall Ducks, First Edition (RW18).** Lithograph, **signed Maynard Reece** in pencil with "Duck Stamp Design - 1951" at bottom left, design size 232 x 170mm on 286 x 220mm paper, Extremely Fine, only 250 of the first edition were printed (the second edition prints have a "2nd" notation), Stearns and Fink Value \$2,000.00 E. 750-1,000



3020

- 3020 **1952, Harlequin Ducks, First Edition (RW19).** Lithograph, signed **John H. Dick** in pen at bottom right and "Duck Stamp Design 1952" at bottom left, image size 238 x 182mm, the edges of the paper with some adherences from prior mounting but well clear of design, Very Fine and rare, it is not known with certainty how many of the first edition were printed (the artist estimated only 250), Stearns and Fink value \$2,700.00 E. 400-500



3021

- 3021 **1959, Labrador Carrying Mallard Drake, First Edition (RW26).** Lithograph, signed **Maynard Reece** in pencil at bottom right and "Duck Stamp Design — 1959 1st Edition" in pencil at bottom left, image size 231 x 168mm, matted and framed with stamp below (scan shows reflection from glass), absolutely pristine without a hint of aging or spotting
VERY FINE EXAMPLE OF THE FIRST EDITION 1959 LABRADOR RETRIEVER DUCK STAMP PRINT — ARGUABLY THE MOST BEAUTIFUL AND CERTAINLY THE MOST POPULAR DESIGN OF THE DUCK STAMP SERIES.

The Labrador retriever depicted on the 1959 issue was named King Buck and was a national champion dog. This is the only Duck Stamp issue to depict a dog as its central theme. Four editions of this print were issued, the first three differentiated mainly by the reeds to the left of the duck in King Buck's mouth. The First edition is the most desirable though all editions are in high demand due to the popularity of the design.

Stearns and Fink value \$6,000.00 E. 2,000-3,000



3022EX



3023



3024

- 3022 **1948, 1951, 1959, 1969, 1971 Duck Stamp Prints, Maynard Reece Limited Edition (RW15, RW18, RW26, RW36, RW38).** Five prints from the Limited Edition set released by artist Maynard Reece, each numbered 23/125, all **remarqued and signed** and also accompanied by a signed stamp, in original folders and box, Extremely Fine, as the only five-time winner of the competition Reece is by far the most prolific artist in the history of the Federal Duck Stamp program.....**(Photo Ex)** E. 500-750
- 3023 **1970, Ross' Geese, First Edition Remarqued (RW37).** Multicolored lithograph, **signed Edward J. Bierly** in pencil with "221/300 Ross' Geese" in pencil at left, image area 250 x 175mm, matted and with unused stamp below, neat pair of ducks pencil remarque next to Bierly's signature, Extremely Fine, only 300 First editions were remarqued, Stearns and Fink value \$3,750.00..... E. 500-750
- 3024 **1971, Cinnamon Teal, First Edition (RW38).** Hand-colored lithograph, **signed Maynard Reece** in pencil with "600/950 Duck Stamp Design - 1971 - 1st Ed." in pencil at left, image area 230 x 165mm, neatly matted with signed unused stamp below, bright and fresh, Extremely Fine, this issue represents the fifth and final win for the illustrious Maynard Reece, this is one of the most beautiful duck prints ever produced and is a fitting tribute to Reece, Stearns and Fink value \$5,200.00 E. 1,500-2,000



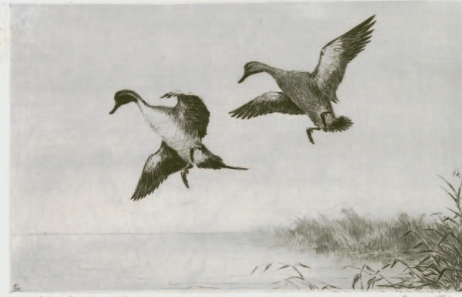
3025



3026



3027EX



3028EX

- 3025 **1973, Steller's Eiders, First Edition Remarqued (RW40).** Multicolored print, **signed Lee LeBlanc** in pencil with no. "516/1000", lovely pencil remarque at bottom, full size with large margins in original folder, fresh and Extremely Fine, Stearns and Fink value \$2,800.00..... E. 400-500
- 3026 **1975, Canvasback Decoy, First Edition Remarqued (RW42).** Multicolored print, **signed James P. Fisher** in pencil and numbered "640/3150" with additional signature and unused signed stamp, beautiful pencil remarque of ducks skipping on water, full size with large margins in original folder, Extremely Fine, this is the first and only Duck Stamp design to depict a decoy, subsequent rules required a living waterfowl as the primary design, Stearns and Fink value \$1,600.00..... E. 400-500
- 3027 **1980, Mallards, Artist Proof Edition Remarqued (RW47).** Multicolored print, **signed Richard Plasschaert** with "119/250 Artist Proof" in pencil, also with beautiful **multicolor painted remarque initialed by the artist**, full size and in original folder, Extremely Fine and rare, the regular edition of this print was numbered 1-12,950 (an example is included in this lot, numbered 26), this artist's edition was not sold according to the Stearns and Fink book (and is also unpriced), we are not aware if the others from the artist's edition have the painted remarque but this is certainly a beautiful and rare print.....**(Photo Ex)** E. 750-1,000
- 3028 **1938-2014 Hunting Permits, Artist Prints (RW5/RW81).** Extensive group of approximately 59 prints, earliest are from the years 1938, 1940 (two, both third edition), 1944 (third edition), 1949 (second edition) and 1966 (second edition), from 1972 through 2014 the collection is complete except missing one (1973, offered as an individual lot), the 1982 print is the special Artist Proof, of which 400 were made and they were not offered for sale, many prints are accompanied by signed stamps and later prints show a good mix of companion piece editions and some executive editions, fresh condition throughout, Very Fine collection, see our attached website PDF for a complete list of years, editions and Stearns and Fink values, which total more than \$37,000.00**(Photo Ex)** E. 4,000-5,000

REMARQUES AND ARTISTS' SIGNATURES



3029EX

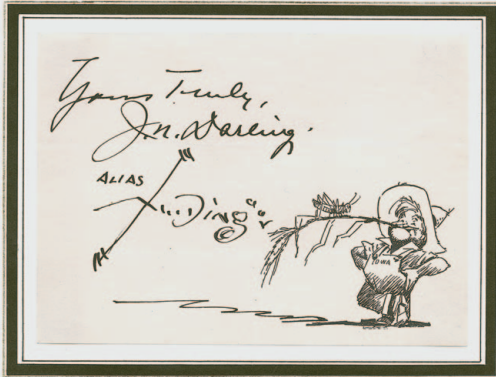
3029 **\$1.00-\$25.00 1934-2015 Hunting Permits, Remarqued (RW1-RW82).** 82 stamps each with corner sheet selvage and in black mount on a separate page, each one drawn by Ron Jenkins (the artist for the 1965 issue, RW32) and signed, each page also has a colorful hand-drawn design by Ron Jenkins and signed by him, all remarques and pages are colorful and intricate, each stamp also has notation of either "In tribute to" or "In recognition of" and the name of the artist of the stamp

VERY FINE. A COMPLETE SET OF CORNER-MARGIN SINGLES OF THE FIRST 82 HUNTING PERMIT ISSUES WITH REMARQUES AND ALSO ON BEAUTIFULLY ILLUSTRATED PAGES. THIS IS A RARE OPPORTUNITY TO ACQUIRE A COMPLETE REMARQUED SET OF RW1 THRU RW82.

The collection is housed in two deluxe leather Godden albums with slipcases. There is also a frontispiece with a name and "I hope you enjoy the remarques on your pages. It was fun for me when I have the chance to work on so many different subjects. Thanks for the opportunity, I truly enjoyed it." and signed "Ron Jenkins, Artist RW32". See our website PDF for a complete scan.....

.....(Photo Ex/Website PDF) E. 7,500-10,000

It was only fitting that Alvin R. Meissner of the Bureau of Engraving and Printing should design the very first of the annual series of duck stamps from an original drawing by Jay M. "Ding" Darling, who was head of the Bureau of Biological Survey, one of the predecessor agencies of the Fish and Wildlife Service.



Vignette engraved by Carl T. Ault, frame lettering & numerals by Frank Lamasure, Plates: 129199-129202 Quantity sold: 635,001

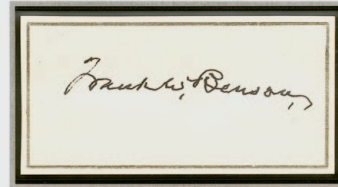


Issue of 1935



Canvasback Ducks

Designed by Alvin R. Meissner from an original drawing by Frank W. Benson



Vignette engraved by Carl T. Ault, frame lettering & numerals by Donald R. McLeod Plates: 131980-83 Quantity sold: 448,204



3030EX

3030 ★★ **\$1.00-\$7.50 1934-1986 Hunting Permits, Accompanied by Artist Signatures (RW1-RW53).** Beautiful leather Godden album with a separate page for each stamp, RW1 is on two pages and includes a Mint N.H. single and form 3333 signed but without a stamp and second page with **original signed drawing of a farmer by Ding Darling**, each subsequent issue is on a **page with beautiful hand drawing mirroring the design on the stamp and also with a gold bordered card with each artist's signature**, each page also gives information on the engravers, plates used and quantity sold, the drawings on the pages are unsigned, also includes a page with a certificate of purchase from 1959 stamp printed by National Wildlife Federation

VERY FINE. A PHENOMENAL COLLECTION OF THE FIRST 53 FEDERAL HUNTING PERMIT ISSUES, ACCOMPANIED BY SIGNATURES OF THE ARTISTS AND EACH ON A PAGE WITH A LOVELY DRAWING MIRRORING THE THEME OF THE STAMP. SURELY THIS IS A UNIQUE HOLDING AND WAY OF DISPLAYING THESE ISSUES. TRULY REMARKABLE.

Scott value of \$6,281.00 for just the stamps in Mint N.H. condition does not take into account the original Ding Darling signed drawing, the RW1 form 3333, the artist's signatures on gold bordered cards or the original drawings on each album page.
.....(Photo Ex/Website PDF) E. 7,500-10,000



3031EX

- 3031 ★ **1934-2012 Hunting Permits, Complete Plate Number Collection (RW1-RW79).** Three deluxe leather Godden albums with slipcovers, containing plate number singles thru 2012, **complete for all plate numbers**, some top positions with the "F" and RW1 plate 129200 has both with and without F top positions, the rotary press printings have a page for each plate with all four corner positions represented, for some reason five positions after RW37 are missing and would no doubt be easy to acquire, **each page with a hand-drawn design and initialed "KM"**, stamps are in sealed black mounts but we assume most are Mint N.H., there may be a few small imperfections (we noticed a natural paper crease on an RW1)

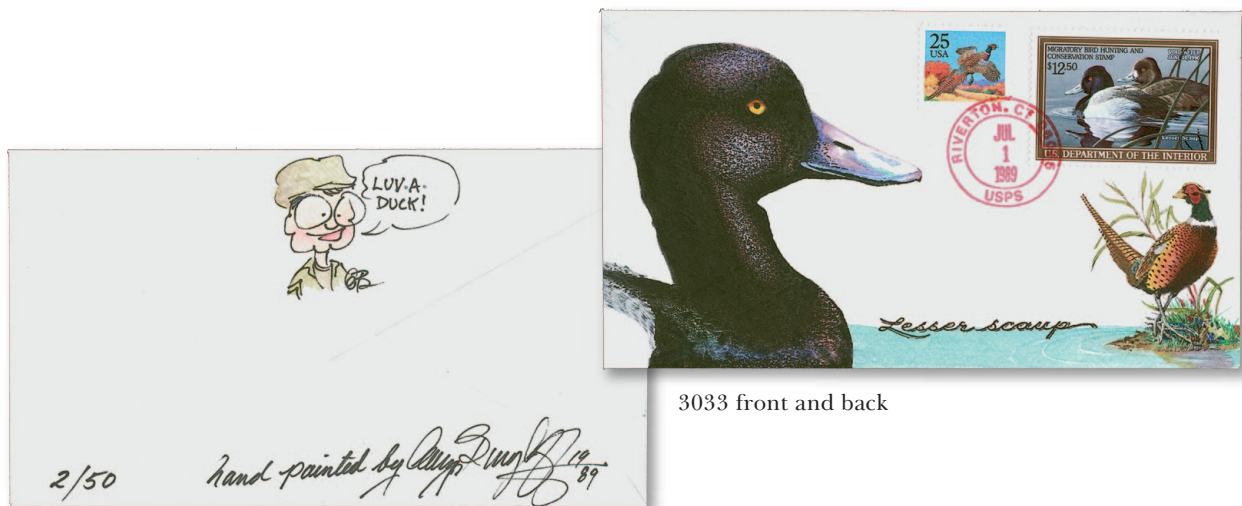
FINE-VERY FINE. AN EXTREMELY RARE COLLECTION OF FEDERAL HUNTING PERMIT PLATE NUMBERS IN THREE GODDEN ALBUMS, REPRESENTING EVERY PLATE USED FOR THESE ISSUES AND TOP AND BOTTOM POSITIONS FOR THE FLAT PLATE ISSUES AND ALL FOUR CORNERS FOR THE ROTARY PRESS ISSUES — ON HAND-DRAWN ILLUSTRATED PAGES. TRULY A UNIQUE COLLECTION.

If all stamps are Mint N.H., then Scott value as singles without premiums for the plate numbers would be \$41,494.00. The value in this collection is only partly in the stamps. The Godden albums, the hand-drawn pages and the plate numbers from every plate and almost every position combine to make this a spectacular and unique collection.....
(Photo Ex/Website PDF) E. 15,000-20,000



3032EX

- 3032 ★★ **\$1.00-\$25.00 1944-2018 Hunting Permits, Remarked (RW11/RW86).** Attractive group of Hunting Permits and a few regular issues depicting water fowl, with wonderful drawings in selvage or over the design of the stamps, including two of RW11 signed by Ron Jenkins (artist of RW32), RW67 with four items signed by artist Adam Grimm and with his artwork in selvage, RW81 with beautiful drawing of bird in flight on block of four with one stamp colored over and signed by artist Grimm, block of four and single of RW82 and also RW82A with drawings and signed by artist Jennifer Miller, RW83 block of four and single and RW83A with drawings and signed by artist Hautman (also pair signed by the artist), next is group of RW85 including block of four and single with drawings and signed by the artist and also similar of RW85b souvenir sheet and RW85A sheet of one, next group is of RW86 including block of four and single with central artwork (unsigned) and RW86A also with artwork and initialed by the artist, among the regular U.S. stamps are a block of ten of No. 1362 signed by Maynard Reece and with small drawing in selvage, similar block of 25 with central drawing and signed by Les Kouba, No. 2092 block of ten with drawing and signed by Les Kouba, last is No. 1757 large multiple with drawing and signed by James Fisher (Photo Ex/Website PDF) E. 3,000-4,000



3033 front and back

- 3033 ☒ **\$12.50 1989 Hunting Permit (RW56).** Used with 25c Pheasant and tied together by magenta "Riverton Ct. USPS Jul. 1, 1989" double-circle datestamp on **hand-illustrated duck and pheasant design cover by M*A*S*H actor Gary Burghoff**, back with painted caricature of his "Radar" O'Reilly character saying "Luv A Duck!" and his signature, numbered 2/50, Very Fine, a wonderful cover from this actor, who is also a respected wildlife artist and stamp collector E. 300-400
- 3034 **Hand-Drawn Hunting Permit Pages.** Two leather Godden albums with slipcovers, with ruled pages for each issue from RW1 thru RW70 (1934-2003), **each page has a remarkable hand-drawing in pencil with beautifully scripted title at top**, many initialed "D.C.", no stamps are included, an excellent opportunity for the specialist who wants to form their own collection on pages with waterfowl-themed artwork....*Not illustrated* E. 500-750

- 3035 (★) **\$1.00 Blue, 1934 Hunting Permit (RW1).** Unused (no gum), **signed Ding Darling**, just a hint of light toning or soiling above left duck, still Very Fine, scarce and desirable signed by Ding Darling, who created this iconic design in about an hour..... E. 1,500-2,000



3035



3036

- 3036 ★ **\$1.00 Blue, 1934 Hunting Permit (RW1).** Original gum, small piece out at top right has been expertly restored, **signed JN "Ding" Darling**, Very Fine appearance, scarce signed by Ding Darling, who created this iconic design in about an hour..... E. 1,000-1,500

- 3037 ★★ **Ding Darling.** Small group of items related to J.N. "Ding" Darling and early wildlife conservation efforts, including signature *JN Darling* on cinderella with "Help Restore our Wildlife" slogan, also National Wildlife Federation conservation stamp album from 1938-1939 (the year Darling was president), few other collateral items relating to Darling, Fine-Very Fine and interesting group
(Photo Ex/Website PDF) E. 500-750



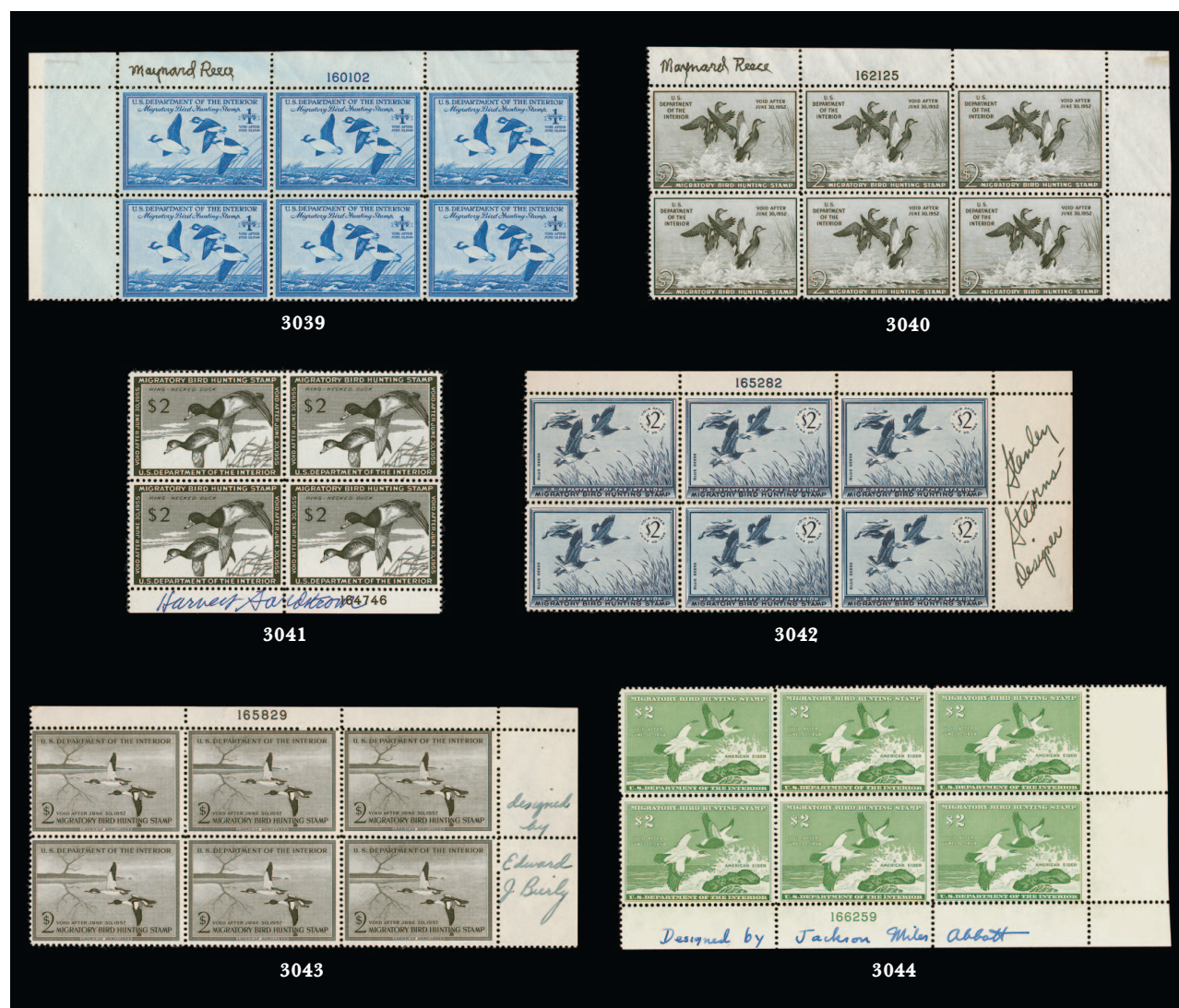
3037EX



3038 with detail of selvage

- 3038 ★★ **\$1.00 Rose Lake, 1935 Hunting Permit (RW2).** Mint N.H. with top plate no. F 131980 selvage, signed in selvage in pencil by actor **Gary Burghoff** ("Radar" O'Reilly from M*A*S*H), Very Fine, with 2018 James Spence certificate, Scott value with no premium for the signature 750.00





- 3039 ★★田 \$1.00 Bright Blue, 1948 Hunting Permit (RW15). Mint N.H. top left plate no. 160102 block of six, typical selvage width for the top position plate blocks, **signed by Maynard Reece** in the selvage, Very Fine, scarce signed by the artist, Scott value as normal plate block..... 400.00
- 3040 ★★田 \$2.00 Gray Black, 1951 Hunting Permit (RW18). Mint N.H. top right plate no. 162125 block of six, typical selvage width for top positions, **signed by artist Maynard Reece** in selvage, usual natural gum skips and bends, Very Fine, Scott value with no premium for the signature..... 550.00
- 3041 ★★田 \$2.00 Black, 1954 Hunting Permit (RW21). Mint N.H. block of four with bottom plate no. 164746 selvage, **signed by artist Harvey Sandstrom** in selvage, Very Fine and choice, Scott value as singles without premium for the signature 340.00
- 3042 ★★田 \$2.00 Dark Blue, 1955 Hunting Permit (RW22). Mint N.H. top right plate no. 165282 block of six, typical selvage width for this issue, **signed by artist Stanley Stearns**, Very Fine and choice, Scott value with no premium for the signature 575.00
- 3043 ★★田 \$2.00 Black, 1956 Hunting Permit (RW23). Mint N.H. top right plate no. 165829 block of six, rich shade, typical selvage width for this issue, **signed by artist Edward J. Bierly**, top center stamp two small toned spots on back, Fine-Very Fine, scarce signed by the artist, Scott value with no premium for the signature 575.00
- 3044 ★★田 \$2.00 Emerald, 1957 Hunting Permit (RW24). Mint N.H. bottom right plate no. 166259 block of six, typical selvage width for this issue, bright color, **signed by artist Jackson Miles Abbott**, top center stamp few toned spots on back, Very Fine, scarce signed by the artist, Scott value with no premium for the signature 575.00



- 3045 ★★田 \$2.00 Black, 1958 Hunting Permit (RW25). Mint N.H. top right plate no. 166755 block of six, typical selvage width for the issue, detailed impression, **signed by artist Les Kouba**, Very Fine and choice, Scott value with no premium for the signature 525.00
- 3046 ★★田 \$3.00 1959 Hunting Permit (RW26). Mint N.H. top left plate no. 167120 block of four, rich colors, **signed by artist Maynard Reece**, Very Fine and choice, rare and desirable plate block of this very popular issue signed by the artist, who was the most prolific winner in the competition's history, Scott value with no premium for the signature 550.00
- 3047 ★★田 \$3.00 1960 Hunting Permit (RW27). Mint N.H. bottom left plate no. 167503 block of four, intense colors, **signed by artist John A. Ruthven**, Very Fine and choice, Scott value with no premium for the signature 425.00
- 3048 ★★田 \$3.00 1961 Hunting Permit (RW28). Mint N.H. bottom right plate no. 167768 block of four, **signed by artist Edward A. Morris**, Very Fine and choice, Scott value with no premium for the signature 450.00
- 3049 ★★田 \$3.00 1962 Hunting Permit (RW29). Mint N.H. top right plate no. 168073 block of four, rich colors, **signed by artist Edward A. Morris**, Very Fine, Scott value with no premium for the signature 500.00
- 3050 ★★田 \$3.00 1963 Hunting Permit (RW30). Mint N.H. top right plate no. 168273 block of four, **signed by artist Edward J. Bierly**, Very Fine and choice, Scott value with no premium for the signature. 450.00



- 3051 ★★田 **\$3.00 1964 Hunting Permit (RW31).** Mint N.H. block of four with top left plate no. 168629, **signed by artist Stanley Stearns**, Very Fine and choice, the plate number for RW31 was put into the wrong place, resulting in many plate block collectors buying this as a block of four, as opposed to the correct block of six format, Scott value as singles with no premium for the signature..... 400.00
- 3052 ★★田 **\$3.00 1965 Hunting Permit (RW32).** Mint N.H. bottom right plate no. 168791 block of four, **signed by artist Ron Jenkins**, fresh and Very Fine, Scott value with no premium for the signature..... 450.00
- 3053 ★田 **\$3.00 1966 Hunting Permit (RW33).** Two artist-signed items, bottom right plate no. 169063 block of four, deep rich colors, **signed by artist Stanley Stearns**, bottom right stamp small adherence on gum, top left stamp toned spot on gum, still Very Fine, scarce signed by the artist, also signed single with disturbed original gum, Very Fine, Scott value as Mint N.H. plate block with no premium for the signature.....(Photo Ex) 500.00
- 3054 ★★田 **\$3.00 1967 Hunting Permit (RW34).** Mint N.H. bottom left plate no. 169457 block of four, rich colors, **signed by artist Les Kouba**, Very Fine and choice, Scott value with no premium for the signature..... 550.00
- 3055 ★★田 **\$3.00 1968 Hunting Permit (RW35).** Mint N.H. top right plate no. 170436 block of four, **signed by artist Claremont G. Pritchard**, Very Fine and choice, Scott value with no premium for the signature..... 300.00
- 3056 ★★田 **Artist Signed Plate Blocks.** 45 items total, including 40 Mint N.H. plate blocks and three singles, singles of Nos. RW11 (signed by engravers), RW54 and RW83, also includes signed RW85b souvenir sheet of four and RW85A sheet of one, virtually all Mint N.H., most with signatures in selvage but a few are on the stamps, overall fresh and Fine-Very Fine, a fantastic group which would be difficult to assemble, spreadsheet accompanies, Scott value with no premium for the artist signatures.....(Website PDF) 5,860.00
- 3057 ★★田 **Modern Hunting Permits Plate Blocks Balance.** Nice group of Mint N.H. plate blocks mostly on dealer pages, including Nos. RW41-RW46, RW48-RW58, RW61-RW62, some other issues up to RW85, also few RW85b souvenir sheets, few other odds and ends, Fine-Very Fine, Scott value approximately.....Not illustrated 4,000.00

1934-1958 SMALL DIE PROOFS ON WOVE

The 25 proofs in lot 3058 will be offered as one unit with a starting bid of \$125,000.
 If the group fails to meet the minimum bid, then they will be offered individually as lots 3059-3083.
 Larger illustrations are shown on the following pages.



3058

3058 P **1934-58 Hunting Permits, Small Die Proofs on Wove (RW1P2-RW25P2).** Complete set of all 25 Scott-listed Federal Hunting Permit small die proofs on wove, offered together as a single lot if the bidding reaches the low estimate of \$125,000, and if the estimate is not met each individual proof will be offered on its own immediately following this lot, each approximately 51 x 36mm, absolutely gorgeous colors throughout, exceptional condition with only one proof with a minor wrinkle (RW11P2)

EXTREMELY FINE GROUP. AN EXCEPTIONALLY RARE OPPORTUNITY TO ACQUIRE A COMPLETE SET OF THE 1934-58 FEDERAL HUNTING PERMIT ISSUES, SMALL DIE PROOFS ON WOVE.

The Federal Hunting Permit small die proofs on wove are listed in Scott for the 1934 thru 1958 Issues (RW1P2-RW25P2). It is believed that only one to three of each exist and a group was part of the Jeanette Rudy collection, which was gifted to the National Postal Museum. Therefore, it would be extremely difficult to duplicate this set.

Each proof accompanied by a beautiful full-page colored remarque by famed wildlife artist Ron Jenkins (the artist for the 1965 issue, RW32), with central mounts for the proofs (see the linked PDFs after each of the following single-proof lots). Each with 2008 P.F. certificate. Scott value as individual proofs(Website PDF) 210,500.00



3059

3059 P **\$1.00 Blue, 1934 Hunting Permit, Small Die Proof on Wove (RW1P2).** 52 x 36mm, gorgeous impression and color on fresh wove paper

EXTREMELY FINE AND EXCEPTIONALLY RARE SMALL DIE PROOF OF THE 1934 FIRST FEDERAL HUNTING PERMIT ISSUE, SCOTT RW1.

Accompanied by a beautiful full-page colored remarque by famed wildlife artist Ron Jenkins (the artist for the 1965 issue, RW32), depicting ducks in similar orientations — with central mount for the proof (see linked PDF). With 2008 P.F. certificate.....
.....(Photo/Website PDF) 22,500.00

3060 P **\$1.00 Rose Lake, 1935 Hunting Permit, Small Die Proof on Wove (RW2P2).** 52 x 36mm, vivid color and beautiful impression

EXTREMELY FINE AND RARE SMALL DIE PROOF OF THE 1935 FEDERAL HUNTING PERMIT ISSUE, SCOTT RW2.

Accompanied by a beautiful full-page colored remarque by famed wildlife artist Ron Jenkins (the artist for the 1965 issue, RW32), with central mount for the proof (see linked PDF). With 2008 P.F. certificate.
.....(Photo/Website PDF) 12,500.00



3060



3061

3061 P **\$1.00 Brown Black, 1936 Hunting Permit, Small Die Proof on Wove (RW3P2).** 52 x 36mm, intense shade and detailed impression

EXTREMELY FINE AND RARE SMALL DIE PROOF OF THE 1936 FEDERAL HUNTING PERMIT ISSUE, SCOTT RW3.

Accompanied by a beautiful full-page colored remarque by famed wildlife artist Ron Jenkins (the artist for the 1965 issue, RW32), with central mount for the proof (see linked PDF). With 2008 P.F. certificate.....
.....(Photo/Website PDF) 8,500.00

3062 P **\$1.00 Light Green, 1937 Hunting Permit, Small Die Proof on Wove (RW4P2).** 52 x 36mm, gorgeous color and detailed impression

EXTREMELY FINE AND RARE SMALL DIE PROOF OF THE 1937 FEDERAL HUNTING PERMIT ISSUE, SCOTT RW4.

Accompanied by a beautiful full-page colored remarque by famed wildlife artist Ron Jenkins (the artist for the 1965 issue, RW32), with central mount for the proof (see linked PDF). With 2008 P.F. certificate.
.....(Photo/Website PDF) 8,500.00



3062



3063

3063 P **\$1.00 Light Violet, 1938 Hunting Permit, Small Die Proof on Wove (RW5P2).** 52 x 36mm, glowing color and beautiful

EXTREMELY FINE AND RARE SMALL DIE PROOF OF THE 1938 FEDERAL HUNTING PERMIT ISSUE, SCOTT RW5.

Accompanied by a beautiful full-page colored remarque by famed wildlife artist Ron Jenkins (the artist for the 1965 issue, RW32), with central mount for the proof (see linked PDF). With 2008 P.F. certificate.
.....(Photo/Website PDF) 8,500.00

- 3064 P **\$1.00 Chocolate, 1939 Hunting Permit, Small Die Proof on Wove (RW6P2).** 52 x 36mm, deep rich color and detailed impression

EXTREMELY FINE AND RARE SMALL DIE PROOF OF THE 1939 FEDERAL HUNTING PERMIT ISSUE, SCOTT RW6.

Accompanied by a beautiful full-page colored remarque by famed wildlife artist Ron Jenkins (the artist for the 1965 issue, RW32), with central mount for the proof (see linked PDF). With 2008 P.F. certificate.....
(Photo/Website PDF) 7,500.00



3064



3065

- 3065 P **\$1.00 Sepia, 1940 Hunting Permit, Small Die Proof on Wove (RW7P2).** 51 x 36mm, rich color and lovely impression

EXTREMELY FINE AND RARE SMALL DIE PROOF OF THE 1940 FEDERAL HUNTING PERMIT ISSUE, SCOTT RW7.

Accompanied by a beautiful full-page colored remarque by famed wildlife artist Ron Jenkins (the artist for the 1965 issue, RW32), with central mount for the proof (see linked PDF). With 2008 P.F. certificate.....
(Photo/Website PDF) 7,500.00

- 3066 P **\$1.00 Brown Carmine, 1941 Hunting Permit, Small Die Proof on Wove (RW8P2).** 51 x 36mm, vivid color and detailed impression

EXTREMELY FINE AND RARE SMALL DIE PROOF OF THE 1941 FEDERAL HUNTING PERMIT ISSUE, SCOTT RW8.

Accompanied by a beautiful full-page colored remarque by famed wildlife artist Ron Jenkins (the artist for the 1965 issue, RW32), with central mount for the proof (see linked PDF). With 2008 P.F. certificate.....
(Photo/Website PDF) 7,500.00



3066



3067

- 3067 P **\$1.00 Violet Brown, 1942 Hunting Permit, Small Die Proof on Wove (RW9P2).** 51 x 36mm, deep rich color and crisp impression

EXTREMELY FINE AND RARE SMALL DIE PROOF OF THE 1942 FEDERAL HUNTING PERMIT ISSUE, SCOTT RW9.

Accompanied by a beautiful full-page colored remarque by famed wildlife artist Ron Jenkins (the artist for the 1965 issue, RW32), with central mount for the proof (see linked PDF). With 2008 P.F. certificate.....
(Photo/Website PDF) 7,500.00



3068

- 3068 P **\$1.00 Deep Rose, 1943 Hunting Permit, Small Die Proof on Wove (RW10P2).** 51 x 36mm, vivid color and gorgeous impression

EXTREMELY FINE AND RARE SMALL DIE PROOF OF THE 1943 FEDERAL HUNTING PERMIT ISSUE, SCOTT RW10.

Accompanied by a beautiful full-page colored remarque by famed wildlife artist Ron Jenkins (the artist for the 1965 issue, RW32), with central mount for the proof (see linked PDF). With 2008 P.F. certificate.....
(Photo/Website PDF) 7,500.00



3069

3069 P **\$1.00 Red Orange, 1944 Hunting Permit, Small Die Proof on Wove (RW11P2).** 51 x 36mm, vivid color, minor paper wrinkle at top right

EXTREMELY FINE APPEARING AND RARE SMALL DIE PROOF OF THE 1944 FEDERAL HUNTING PERMIT ISSUE, SCOTT RW11.

Accompanied by a beautiful full-page colored remarque by famed wildlife artist Ron Jenkins (the artist for the 1965 issue, RW32), with central mount for the proof (see linked PDF). With 2008 P.F. certificate.....
.....(Photo/Website PDF) 7,500.00

3070 P **\$1.00 Black, 1945 Hunting Permit, Small Die Proof on Wove (RW12P2).** 51 x 36mm, intense shade and crisp impression

EXTREMELY FINE AND RARE SMALL DIE PROOF OF THE 1945 FEDERAL HUNTING PERMIT ISSUE, SCOTT RW12.

Accompanied by a beautiful full-page colored remarque by famed wildlife artist Ron Jenkins (the artist for the 1965 issue, RW32), with central mount for the proof (see linked PDF). With 2008 P.F. certificate.
.....(Photo/Website PDF) 7,500.00



3070



3071

3071 P **\$1.00 Red Brown, 1946 Hunting Permit, Small Die Proof on Wove (RW13P2).** 51 x 36mm, glowing color and beautiful impression

EXTREMELY FINE AND RARE SMALL DIE PROOF OF THE 1946 FEDERAL HUNTING PERMIT ISSUE, SCOTT RW13.

Accompanied by a beautiful full-page colored remarque by famed wildlife artist Ron Jenkins (the artist for the 1965 issue, RW32), with central mount for the proof (see linked PDF). With 2008 P.F. certificate.....
.....(Photo/Website PDF) 7,500.00

3072 P **\$1.00 Black, 1947 Hunting Permit, Small Die Proof on Wove (RW14P2).** 52 x 36mm, intense shade on fresh wove paper

EXTREMELY FINE AND RARE SMALL DIE PROOF OF THE 1947 FEDERAL HUNTING PERMIT ISSUE, SCOTT RW14.

Accompanied by a beautiful full-page colored remarque by famed wildlife artist Ron Jenkins (the artist for the 1965 issue, RW32), with central mount for the proof (see linked PDF). With 2008 P.F. certificate.....
.....(Photo/Website PDF) 7,500.00



3072



3073

3073 P **\$1.00 Bright Blue, 1948 Hunting Permit, Small Die Proof on Wove (RW15P2).** 51 x 36mm, deep rich color and beautiful impression

EXTREMELY FINE AND RARE SMALL DIE PROOF OF THE 1948 FEDERAL HUNTING PERMIT ISSUE, SCOTT RW15.

Accompanied by a beautiful full-page colored remarque by famed wildlife artist Ron Jenkins (the artist for the 1965 issue, RW32), with central mount for the proof (see linked PDF). With 2008 P.F. certificate.....
.....(Photo/Website PDF) 7,500.00

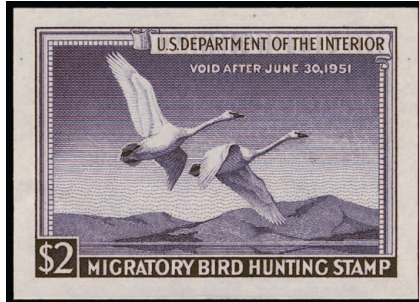
- 3074 P **\$2.00 Bright Green, 1949 Hunting Permit, Small Die Proof on Wove (RW16P2).** 51 x 36mm, gorgeous color and detailed impression

EXTREMELY FINE AND RARE SMALL DIE PROOF OF THE 1949 FEDERAL HUNTING PERMIT ISSUE, SCOTT RW16.

Accompanied by a beautiful full-page colored remarque by famed wildlife artist Ron Jenkins (the artist for the 1965 issue, RW32), with central mount for the proof (see linked PDF). With 2008 P.F. certificate.....
(Photo/Website PDF) 7,500.00



3074



3075

- 3075 P **\$2.00 Violet, 1950 Hunting Permit, Small Die Proof on Wove (RW17P2).** 51 x 36mm, vivid color and detailed impression

EXTREMELY FINE AND RARE SMALL DIE PROOF OF THE 1950 FEDERAL HUNTING PERMIT ISSUE, SCOTT RW17.

Accompanied by a beautiful full-page colored remarque by famed wildlife artist Ron Jenkins (the artist for the 1965 issue, RW32), with central mount for the proof (see linked PDF). With 2008 P.F. certificate.....
(Photo/Website PDF) 7,500.00

- 3076 P **\$2.00 Gray Black, 1951 Hunting Permit, Small Die Proof on Wove (RW18P2).** 51 x 36mm, intense shade on fresh wove paper

EXTREMELY FINE AND RARE SMALL DIE PROOF OF THE 1951 FEDERAL HUNTING PERMIT ISSUE, SCOTT RW18.

Accompanied by a beautiful full-page colored remarque by famed wildlife artist Ron Jenkins (the artist for the 1965 issue, RW32), with central mount for the proof (see linked PDF). With 2008 P.F. certificate.
(Photo/Website PDF) 7,500.00



3076



3077

- 3077 P **\$2.00 Deep Ultramarine, 1952 Hunting Permit, Small Die Proof on Wove (RW19P2).** 51 x 36mm, intense shade on fresh wove paper

EXTREMELY FINE AND RARE SMALL DIE PROOF OF THE 1952 FEDERAL HUNTING PERMIT ISSUE, SCOTT RW19.

Accompanied by a beautiful full-page colored remarque by famed wildlife artist Ron Jenkins (the artist for the 1965 issue, RW32), with central mount for the proof (see linked PDF). With 2008 P.F. certificate.....
(Photo/Website PDF) 7,500.00

- 3078 P **\$2.00 Deep Brown Rose, 1953 Hunting Permit, Small Die Proof on Wove (RW20P2).** 52 x 36mm, deep rich color and detailed impression

EXTREMELY FINE AND RARE SMALL DIE PROOF OF THE 1953 FEDERAL HUNTING PERMIT ISSUE, SCOTT RW20.

Accompanied by a beautiful full-page colored remarque by famed wildlife artist Ron Jenkins (the artist for the 1965 issue, RW32), with central mount for the proof (see linked PDF). With 2008 P.F. certificate.
(Photo/Website PDF) 7,500.00



3078



3079

3079 P

\$2.00 Black, 1954 Hunting Permit, Small Die Proof on Wove (RW21P2). 52 x 36mm, intense shade on fresh wove paper

EXTREMELY FINE AND RARE SMALL DIE PROOF OF THE 1954 FEDERAL HUNTING PERMIT ISSUE, SCOTT RW21.

Accompanied by a beautiful full-page colored remarque by famed wildlife artist Ron Jenkins (the artist for the 1965 issue, RW32), with central mount for the proof (see linked PDF). With 2008 P.F. certificate.....
(Photo/Website PDF) 7,500.00

3080 P

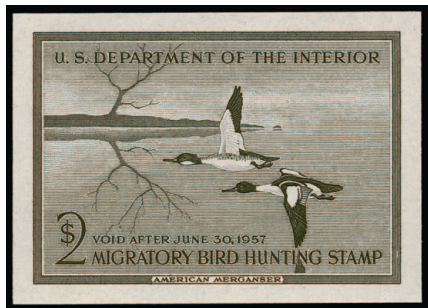
\$2.00 Dark Blue, 1955 Hunting Permit, Small Die Proof on Wove (RW22P2). 51 x 36mm, beautiful deep shade on fresh wove paper

EXTREMELY FINE AND RARE SMALL DIE PROOF OF THE 1955 FEDERAL HUNTING PERMIT ISSUE, SCOTT RW22.

Accompanied by a beautiful full-page colored remarque by famed wildlife artist Ron Jenkins (the artist for the 1965 issue, RW32), with central mount for the proof (see linked PDF). With 2008 P.F. certificate.....
(Photo/Website PDF) 7,500.00



3080



3081

3081 P

\$2.00 Black, 1956 Hunting Permit, Small Die Proof on Wove (RW23P2). 51 x 36mm, intense shade and beautiful impression

EXTREMELY FINE AND RARE SMALL DIE PROOF OF THE 1956 FEDERAL HUNTING PERMIT ISSUE, SCOTT RW23.

Accompanied by a beautiful full-page colored remarque by famed wildlife artist Ron Jenkins (the artist for the 1965 issue, RW32), with central mount for the proof (see linked PDF). With 2008 P.F. certificate.....
(Photo/Website PDF) 7,500.00

3082 P

\$2.00 Emerald, 1957 Hunting Permit, Small Die Proof on Wove (RW24P2). 51 x 36mm, glowing color in the distinct Emerald, detailed impression

EXTREMELY FINE AND RARE SMALL DIE PROOF OF THE 1957 FEDERAL HUNTING PERMIT ISSUE, SCOTT RW24.

Accompanied by a beautiful full-page colored remarque by famed wildlife artist Ron Jenkins (the artist for the 1965 issue, RW32), with central mount for the proof (see linked PDF). With 2008 P.F. certificate.....
(Photo/Website PDF) 7,500.00



3082



3083

3083 P

\$2.00 Black, 1958 Hunting Permit, Small Die Proof on Wove (RW25P2). 51 x 36mm, intense shade on fresh wove paper

EXTREMELY FINE AND RARE SMALL DIE PROOF OF THE 1958 FEDERAL HUNTING PERMIT ISSUE, SCOTT RW25.

Accompanied by a beautiful full-page colored remarque by famed wildlife artist Ron Jenkins (the artist for the 1965 issue, RW32), with central mount for the proof (see linked PDF). With 2008 P.F. certificate.....
(Photo/Website PDF) 7,500.00

OTHER PROOFS



3084

- 3084 E **\$1.00 1934 Hunting Permit, Photo Essays (RW1-E).** Two different essays, first 80 x 62mm with a distinctly different frame design than the issued stamp, including the “One Dollar” circle located at center as well as “One Dollar” reading up and down at sides, wording at bottom is also configured differently than the issued stamp, second essay 88 x 63mm, close to the issued design but the “1” in circles in the corners are wider than on the issued stamp, Extremely Fine and very rare with only a handful of sets reportedly known, these came from the estate of the engraver, Alvin Meissner, who died in 1981 E. 1,500-2,000

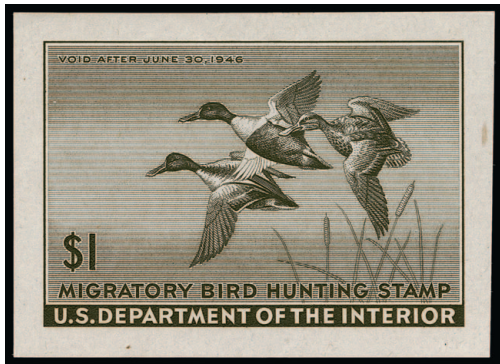


3085

- 3085 P **\$1.00 Deep Rose, 1943 Hunting Permit, Large Die Proof on Wove (RW10P1).** 90 x 75mm wove paper die sunk on 203 x 150mm card, vivid color and gorgeous impression, three tiny punch holes thru the \$1.00 denomination, back with blue handstamped “Engraver’s Stock Proof Authorized by.” and manuscript initials, also with blue number 776786A, three-hole punch on edge of card where it was once kept in a binder.

EXTREMELY FINE AND RARE LARGE DIE PROOF OF THE 1943 FEDERAL HUNTING PERMIT ISSUE, SCOTT RW10.

Federal Hunting Permit proofs are extremely rare in any form and for any issue. This is the only large die proof we have offered for RW10. In fact, outside of this sale we have offered only two other large die proofs for any issue since at least 1993. 7,500.00



3086

3086 P **\$1.00 Black, 1945 Hunting Permit, Large Die Proof on Wove (RW12P1).** Appears at first glance to be a small die proof, but its 53 x 38mm dimensions are larger than any of the small die proofs in this sale so we believe it is more likely a cut-down large die proof (both types of proofs were printed on wove paper), intense shade and detailed impression, small natural straw inclusion in right margin

VERY FINE AND RARE DIE PROOF OF THE 1945 FEDERAL HUNTING PERMIT ISSUE, SCOTT RW12.

Federal Hunting Permit proofs are extremely rare in any form and for any issue. We have offered only one other example of RW12 as a large die proof — a trial color proof in Blue which realized \$18,000 hammer in our 2016 sale of the William Webster collection.

Accompanied by a 1954 invoice from Clarence Brazier calling this a small die proof and stating it is one of two known. While we feel this is more likely a large die proof, it is really immaterial as both are rarities and Scott value is the same. 7,500.00



3087

3087 P **\$1.00 Red Brown, 1946 Hunting Permit, Large Die Proof on Wove (RW13P1).** 90 x 78mm wove paper die sunk on 202 x 151mm card, deep rich color and beautiful impression, small "C" punch hole in right of design has been affixed back into place, back with magenta handstamped "Engraver's Stock Proof Authorized by." with initials, also with blue number 891801A.

EXTREMELY FINE AND RARE LARGE DIE PROOF OF THE 1946 FEDERAL HUNTING PERMIT ISSUE, SCOTT RW13.

Federal Hunting Permit proofs are extremely rare in any form and for any issue. This and the cut-down example in the following lot are the only large die proofs we have offered for RW13. In fact, outside of this sale we have offered only two other large die proofs for any issue since at least 1993. 7,500.00

3088 P **\$1.00 Red Brown, 1946 Hunting Permit, Large Die Proof on Wove (RW13P1).** 73 x 48mm, deep rich color and detailed impression

VERY FINE AND RARE LARGE DIE PROOF OF THE 1946 FEDERAL HUNTING PERMIT ISSUE, SCOTT RW13.

Federal Hunting Permit proofs are extremely rare in any form and for any issue. This and the full-size example in the previous lot are the only large die proofs we have offered for RW13. In fact, outside of this sale we have offered only two other large die proofs for any issue since at least 1993..... 7,500.00



3088



3089

3089 P **\$2.00 Deep Ultramarine, 1952 Hunting Permit, Large Die Proof on Wove (RW19P1).** 88 x 77mm wove paper die sunk on 204 x 151mm card, vivid color and detailed impression, small "C" punch indentation at left of design, back with purple handstamped "Engraver's Stock Proof Authorized by." with initials, also with blue number 80557B.

EXTREMELY FINE AND RARE LARGE DIE PROOF OF THE 1952 FEDERAL HUNTING PERMIT ISSUE, SCOTT RW19.

Federal Hunting Permit proofs are extremely rare in any form and for any issue. This is the only example we have offered of RW19P1. In fact, outside of this sale we have offered only two other large die proofs for any issue since at least 1993. 7,500.00



3090

3090 P **\$3.00 1959 Hunting Permit, Plate Proof on Stamp Paper (RW26P5).** Disturbed original gum as with all the examples of the stamp paper proofs we have encountered, large margins, gorgeous fresh colors

EXTREMELY FINE AND RARE PLATE PROOF OF THE 1959 FEDERAL HUNTING PERMIT ISSUE, SCOTT RW26 — DEPICTING THE ICONIC BLACK LABRADOR RETRIEVER “KING BUCK” — THE ONLY DOG EVER FEATURED ON A FEDERAL DUCK STAMP.

The Federal Hunting Permit plate proofs on gummed stamp paper are listed in Scott beginning with this 1959 Issue, and continue through 1983. While they catalogue less than the earlier small die proofs, they are just as elusive and the examples offered in this sale are the only we have offered.

Accompanied by a beautiful full-page colored remarque by famed wildlife artist Ron Jenkins (the artist for the 1965 issue, RW32), with central mount for the proof (see linked PDF). With 2008 P.F. certificate.....(Photo/Website PDF) 3,000.00



3091

3091 P **\$3.00 1969 Hunting Permit, Plate Proof on Stamp Paper (RW36P5).** Slightly disturbed original gum as with all the examples of the stamp paper proofs we have encountered, large margins, vivid colors

EXTREMELY FINE AND RARE PLATE PROOF OF THE 1969 FEDERAL HUNTING PERMIT ISSUE, SCOTT RW36.

The Federal Hunting Permit plate proofs on gummed stamp paper are listed in Scott beginning with the 1959 Issue, and continue through 1983. While they catalogue less than the earlier small die proofs, they are just as elusive and the examples offered in this sale are the only we have offered.

Accompanied by a beautiful full-page colored remarque by famed wildlife artist Ron Jenkins (the artist for the 1965 issue, RW32), with central mount for the proof (see linked PDF). With 2008 P.F. certificate.....(Photo/Website PDF) 3,000.00

- 3092 P **\$3.00 1971 Hunting Permit, Plate Proof on Stamp Paper (RW38P5).** Original gum which is just barely disturbed, large margins, vivid colors

EXTREMELY FINE AND RARE PLATE PROOF OF THE 1971 FEDERAL HUNTING PERMIT ISSUE, SCOTT RW38.

The Federal Hunting Permit plate proofs on gummed stamp paper are listed in Scott beginning with the 1959 Issue, and continue through 1983. While they catalogue less than the earlier small die proofs, they are just as elusive and the examples offered in this sale are the only we have offered.

Accompanied by a beautiful full-page colored remarque by famed wildlife artist Ron Jenkins (the artist for the 1965 issue, RW32), with central mount for the proof (see linked PDF). With 2008 P.F. certificate.
.....(Photo/Website PDF) 3,000.00



3092

- 3093 P **\$5.00 1972 Hunting Permit, Plate Proof on Stamp Paper (RW39P5).** Slightly disturbed original gum as with all the examples of the stamp paper proofs we have encountered, large margins, vivid colors

EXTREMELY FINE AND RARE PLATE PROOF OF THE 1972 FEDERAL HUNTING PERMIT ISSUE, SCOTT RW39.

The Federal Hunting Permit plate proofs on gummed stamp paper are listed in Scott beginning with the 1959 Issue, and continue through 1983. While they catalogue less than the earlier small die proofs, they are just as elusive and the examples offered in this sale are the only we have offered.

Accompanied by a beautiful full-page colored remarque by famed wildlife artist Ron Jenkins (the artist for the 1965 issue, RW32), with central mount for the proof (see linked PDF). With 2008 P.F. certificate.
.....(Photo/Website PDF) 3,000.00



3093

- 3094 P **\$7.50 1983 Hunting Permit, Plate Proof on Stamp Paper (RW50P5).** Slightly disturbed original gum as with all the examples of the stamp paper proofs we have encountered, large margins, vivid colors

EXTREMELY FINE AND RARE PLATE PROOF OF THE 1983 FEDERAL HUNTING PERMIT ISSUE, SCOTT RW39 — THE LAST ISSUE WITH LISTED PROOFS.

The Federal Hunting Permit plate proofs on gummed stamp paper are listed in Scott beginning with the 1959 Issue, and continue through this 1983 issue. While they catalogue less than the earlier small die proofs, they are just as elusive and the examples offered in this sale are the only we have offered.

Accompanied by a beautiful full-page colored remarque by famed wildlife artist Ron Jenkins (the artist for the 1965 issue, RW32), with central mount for the proof (see linked PDF). With 2008 P.F. certificate.
.....(Photo/Website PDF) 3,000.00



3094

PANES AND SOUVENIR SHEETS



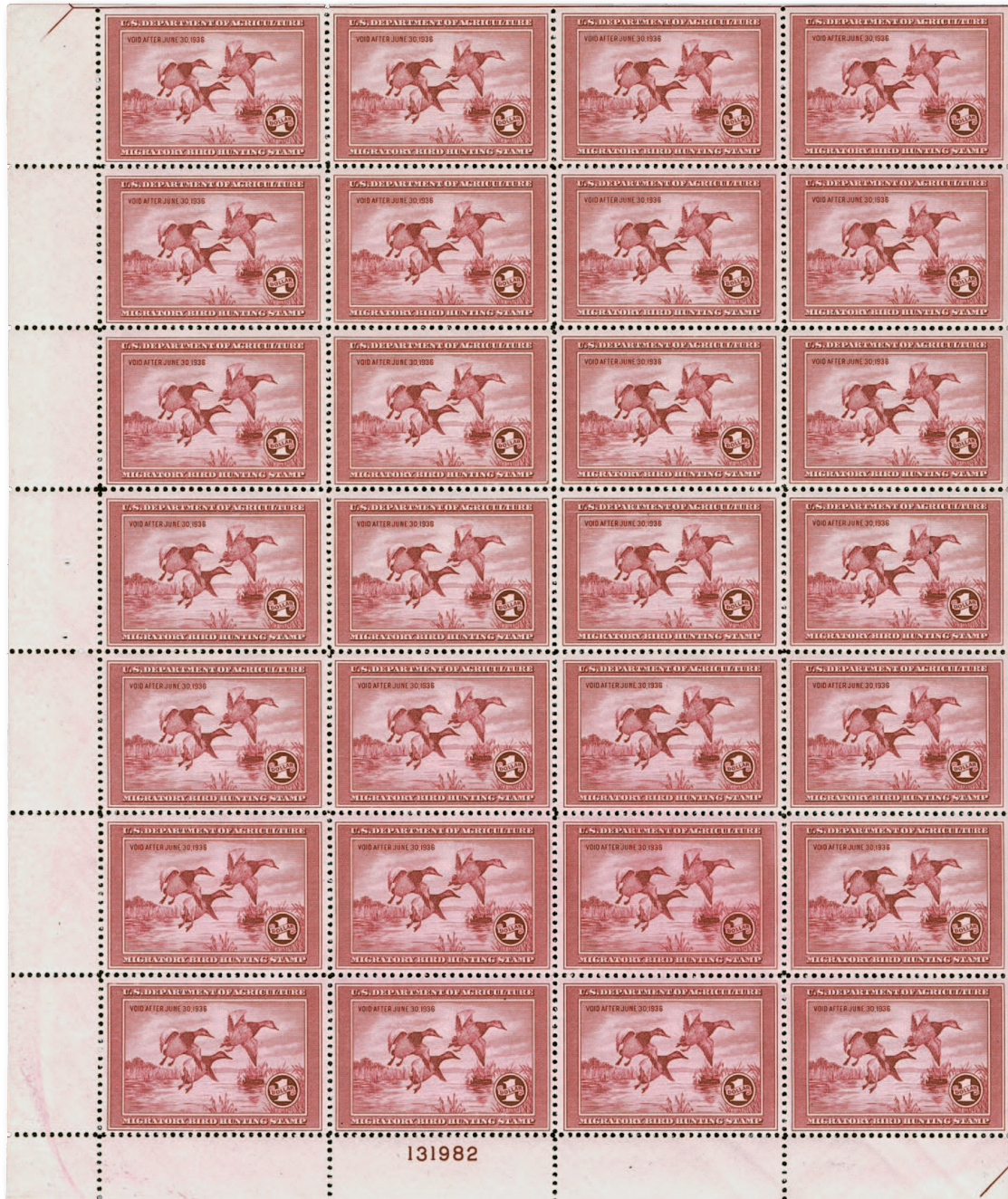
3095 ★★田 \$1.00 Blue, 1934 Hunting Permit (RW1). Complete Mint N.H. pane of 28 with plate no. 129200 at bottom and selvage at right, deep rich color, usual natural gum skips, few minor perf separations at top mentioned for accuracy but this is a beautifully intact pane

VERY FINE. AN INCALCULABLY RARE INTACT MINT NEVER-HINGED PANE OF THE FIRST FEDERAL HUNTING PERMIT ISSUE, SCOTT RW1. THE "HOLY GRAIL" OF HUNTING PERMIT MULTIPLES — VERY FEW ARE KNOWN.

Nos. RW1 thru RW12 were issued in panes of 28. Selvage is found at either top or bottom and on one side; nine stamps have a natural straight edge on one side, and one has a natural straight edge on two sides. Plate numbers are found at either top or bottom, though we have never offered a multiple from the top position larger than a block of six.

The first Hunting Permit stamp went on sale to the public on August 24, 1934. Multiples were not allowed to be sold, until the last two weeks the stamps were on sale, from June 15 thru June 30, 1935. RW2 was placed on sale July 1, 1935. This short period when they were allowed to be sold as unused multiples accounts for their rarity as plate blocks or in panes. This is the first intact pane with selvage on two sides — as issued — that we have offered since keeping computerized records. We have offered two without selvage on one side, but one was separated into two pieces (ex Webster) and another was affixed to a card (ex Frelinghuysen). We are aware of only one other fully intact pane.

Scott value as plate block of six and 22 singles, which does not adequately convey the rarity of this intact pane..... 31,550.00



3096

3096 ★★田 \$1.00 Rose Lake, 1935 Hunting Permit (RW2). Complete Mint N.H. pane of 28 with plate no. 131982 at bottom and selva at left, extra large natural straight edge margin at top capturing complete guideline and half arrow, deep rich color and proof-like impression, usual light natural gum bends

VERY FINE-EXTREMELY FINE. A RARE COMPLETE PANE OF 28 OF THE 1935 SECOND FEDERAL DUCK STAMP ISSUE.

Designed by Frank Weston Benson, this issue shows Canvasback Ducks taking flight. These ducks are a diving species which are highly migratory in the United States. We have offered only one other complete pane of RW2, in our William Webster auction in 2016.

Scott value as plate block and singles does not adequately convey the rarity of this pane.
 29,000.00



3097

3097 ★★田 \$1.00 Brown Black, 1936 Hunting Permit (RW3). Complete Mint N.H. pane of 28 with plate no. 134317 at top and selvage at right, unusually wide top selvage with light gripper marks near top edge, deep rich color, usual light natural gum skips and bends

VERY FINE-EXTREMELY FINE. AN EXTREMELY RARE MINT NEVER-HINGED PANE OF 28 OF THE THIRD FEDERAL HUNTING PERMIT ISSUE, SCOTT RW3. THIS IS THE FIRST WE HAVE OFFERED SINCE KEEPING COMPUTERIZED RECORDS.

The largest multiple we have offered since 1994 and in all of our Rarities sales is a block of sixteen, without plate number. This full pane was missing from the William Webster collection. The example offered here, with wide top plate number selvage and superior centering, is truly remarkable.

Scott value as plate block of six and 22 singles does come close to conveying the rarity of this pane. 10,650.00



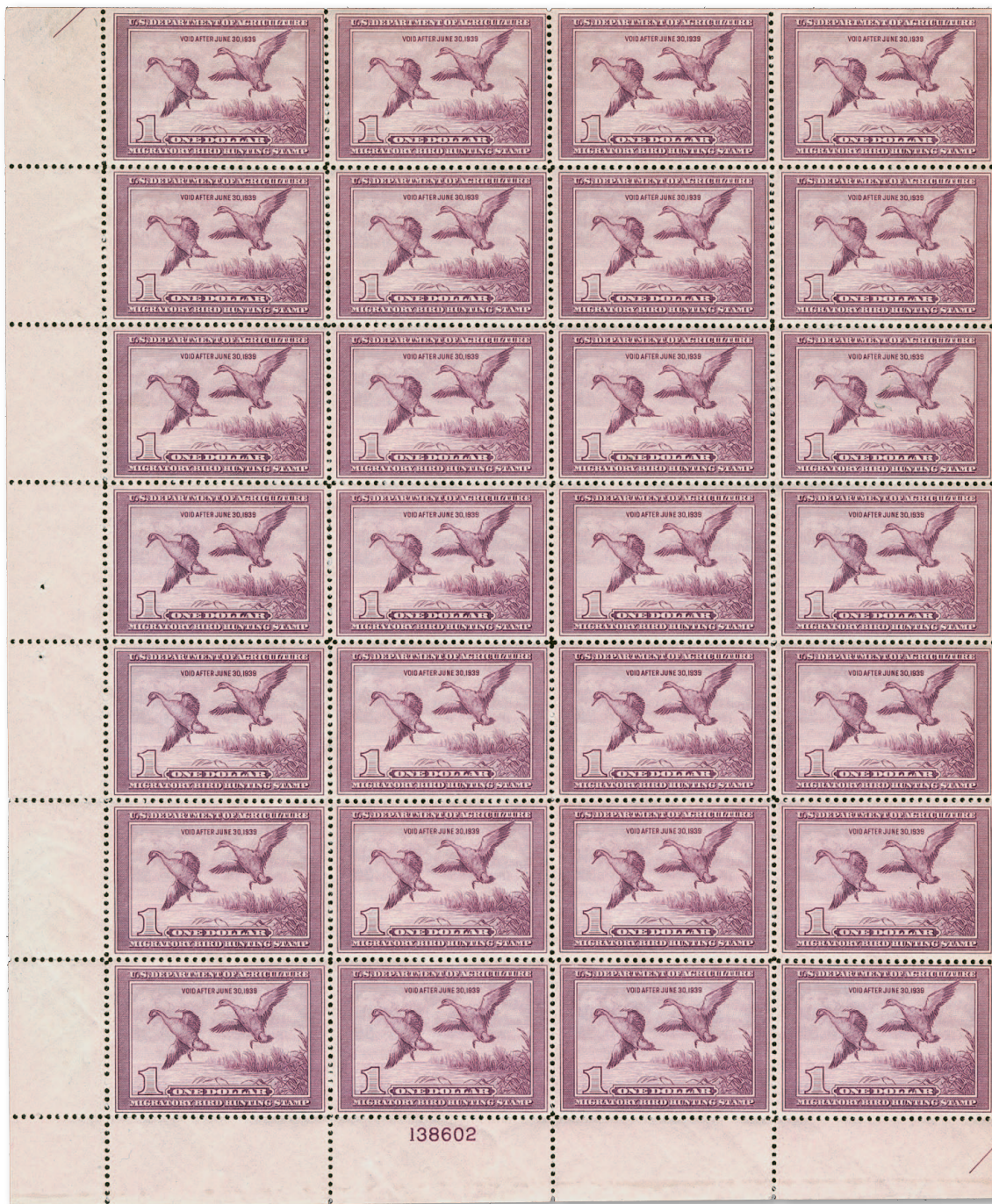
3098

3098 ★★田 \$1.00 Light Green, 1937 Hunting Permit (RW4). Complete Mint N.H. pane of 28 with plate no. F 136267 at top and selvage at right, unusually wide top selvage, pretty color, choice centering throughout, usual light natural gum skips and bends, one bend causes light natural gum crease in Position 8, few minor perf separations mostly confined to outer edges of selvage

VERY FINE-EXTREMELY FINE. A RARE MINT NEVER-HINGED INTACT PANE OF 28 OF THE FOURTH FEDERAL HUNTING PERMIT ISSUE, SCOTT RW4.

The William Webster collection was lacking very few complete panes, but it did lack panes of RW3 and RW4. We have offered only one other intact pane since 1994 and in all of our Rarities sales.

Scott value as plate block of six and singles does not adequately convey the rarity of this complete pane. 9,850.00



3099

3099 ★★田 \$1.00 Light Violet, 1938 Hunting Permit (RW5). Complete Mint N.H. pane of 28 with plate no. 138602 at bottom and selvage at left, deep rich color, natural gum skips and bends, natural paper wrinkle affects three stamps at right, few trivial perf separations

VERY FINE-EXTREMELY FINE. A RARE INTACT PANE OF 28 OF THE 1938 \$1.00 HUNTING PERMIT, SCOTT RW5.

We have offered only one other intact pane, in the William Webster collection, since keeping computerized records. Scott value as plate block of six and singles again does not convey the rarity of the intact pane. 13,800.00



3100 ★★田 \$1.00 Chocolate, 1939 Hunting Permit (RW6). Complete Mint N.H. pane of 28 with plate no. F 141428 at top and selvage at right, intense shade and impression, well-balanced margins throughout, natural paper wrinkle affects a few stamps away from the plate block

VERY FINE-EXTREMELY FINE. A RARE INTACT MINT NEVER-HINGED PANE OF 28 OF THE \$1.00 1939 HUNTING PERMIT ISSUE, SCOTT RW6.

We have offered only one other since keeping computerized records. The William Webster collection was lacking this pane. Scott value as plate block of six and singles, which does not convey the rarity of the intact pane..... 8,000.00



3101

3101 ★★田 **\$1.00 Sepia, 1940 Hunting Permit (RW7)**. Complete Mint N.H. pane of 28 with plate no. 143776 at top and selvage at left, crisp impression, slight natural paper wrinkle at far right well away from plate block

VERY FINE AND CHOICE MINT NEVER-HINGED PANE OF 28 OF THE \$1.00 1940 HUNTING PERMIT ISSUE, SCOTT RW7.

We have offered only two other panes since keeping computerized records. Scott value as plate block of six and singles, which does not convey the rarity of the intact pane. ... 8,000.00



3102

3102 ★★田 \$1.00 Brown Carmine, 1941 Hunting Permit (RW8). Complete Mint N.H. pane of 28 with plate no. 146282 at bottom and selvage at right, nicely centered throughout

VERY FINE-EXTREMELY FINE. A SCARCE AND DESIRABLE MINT NEVER-HINGED PANE OF 28 OF THE \$1.00 1941 HUNTING PERMIT ISSUE, SCOTT RW8.

We have offered three others since keeping computerized records. This is one of the finest we have encountered. Scott value as plate block of six and singles, which does not convey the rarity of the intact pane..... 7,450.00



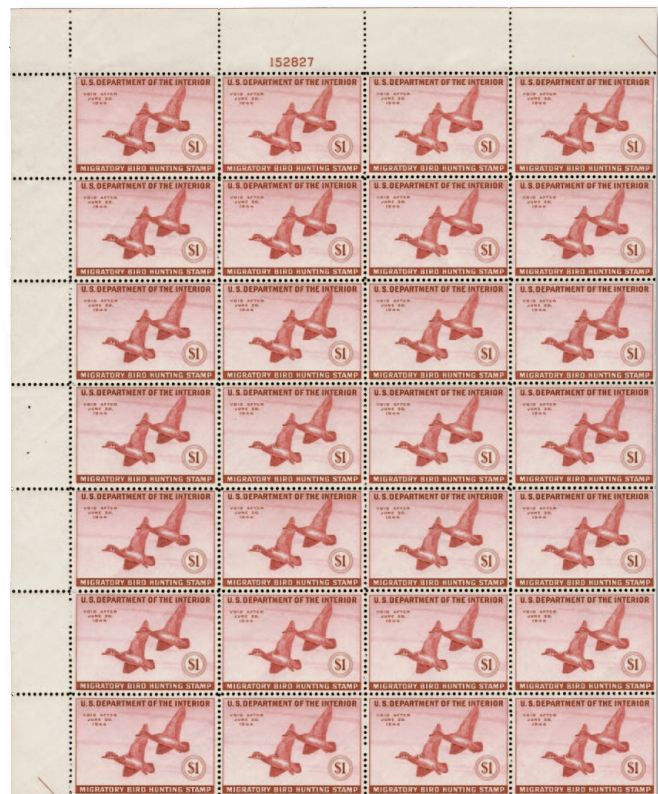
3103

3103 ★★田 \$1.00 Violet Brown, 1942 Hunting Permit (RW9). Complete Mint N.H. pane of 28 with plate no. 149600 at bottom and selvage at left, deep rich color, few natural gum skips at right not affecting plate block

VERY FINE MINT NEVER-HINGED PANE OF 28 OF THE \$1.00 1942 HUNTING PERMIT ISSUE, SCOTT RW9.

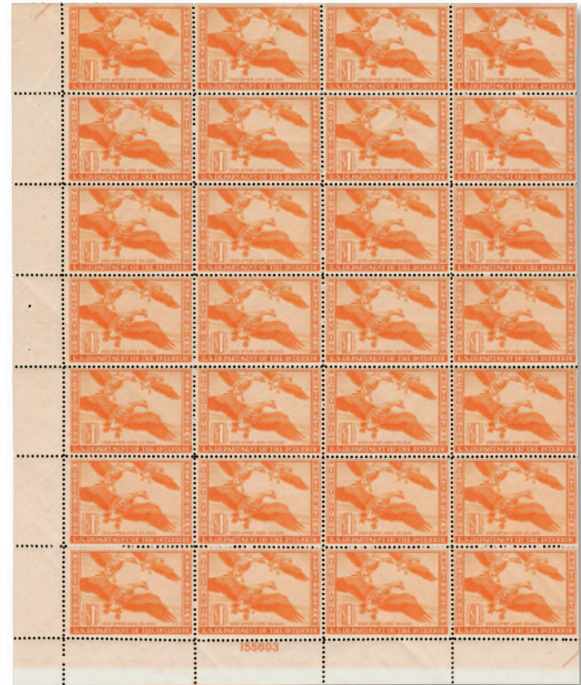
Scott value as plate block of six and singles, which does not convey the rarity of the intact pane. 7,450.00

3104 ★★田 \$1.00 Deep Rose, 1943 Hunting Permit (RW10). Complete Mint N.H. pane of 28 with plate no. 152827 at top and selvage at left, deep rich color, slight natural short gum at top, tear at edge of selvage above plate no., Very Fine-Extremely Fine, Scott value as plate block of six and singles....
..... 3,340.00



3104

- 3105 ★★田 **\$1.00 Red Orange, 1944 Hunting Permit (RW11).** Complete Mint N.H. pane of 28 with plate no. 155603 at bottom and selvage at left, radiant color, few natural gum bends get a bit heavy in places, Very Fine-Extremely Fine and attractive, Scott value as plate block of six and singles .. 3,500.00



3105



3106



3107



3108

- 3106 ★★田 **\$1.00 Black, 1945 Hunting Permit (RW12).** Complete Mint N.H. pane of 28 with plate no. F 157248 at top and selvage at right, bright shade, few natural gum skips mostly in top row, usual natural gum bends, Extremely Fine and attractive, Scott value as plate block of six and singles 2,800.00
- 3107 ★★田 **\$1.00 Red Brown, 1946 Hunting Permit (RW13).** Complete Mint N.H. pane of 28 with top right plate no. 158456 and selvage on all sides, **plate no. 47510 on back of selvage** next to Position 24, **gummed on stamp side** at right in selvage and partway into right column of stamps, few small adherences at bottom causing tiny thin spot in bottom left stamp, few perf separations, Very Fine, very unusual with gumming on the front of the stamp, this is the first federal Hunting Permit issue with perforations on all sides, beginning in 1946 a message began to be printed on the back of Duck Stamps telling hunters to sign their stamp, RW13-RW17 contain the plate number in this one position in the upper right pane of the plate from the offset plate used to print the message, Scott value as plate block of six and singles 1,410.00
- 3108 ★田 **\$1.00 Black, 1947 Hunting Permit (RW14).** Complete pane of 28 with bottom left plate no. 159461 and selvage on all sides, typical narrow selvage as always found on this issue, mostly Mint N.H. except adherences affect a few stamps in plate block, still Very Fine, a scarce full pane, Scott value as Mint N.H. 1,550.00



3109



3110



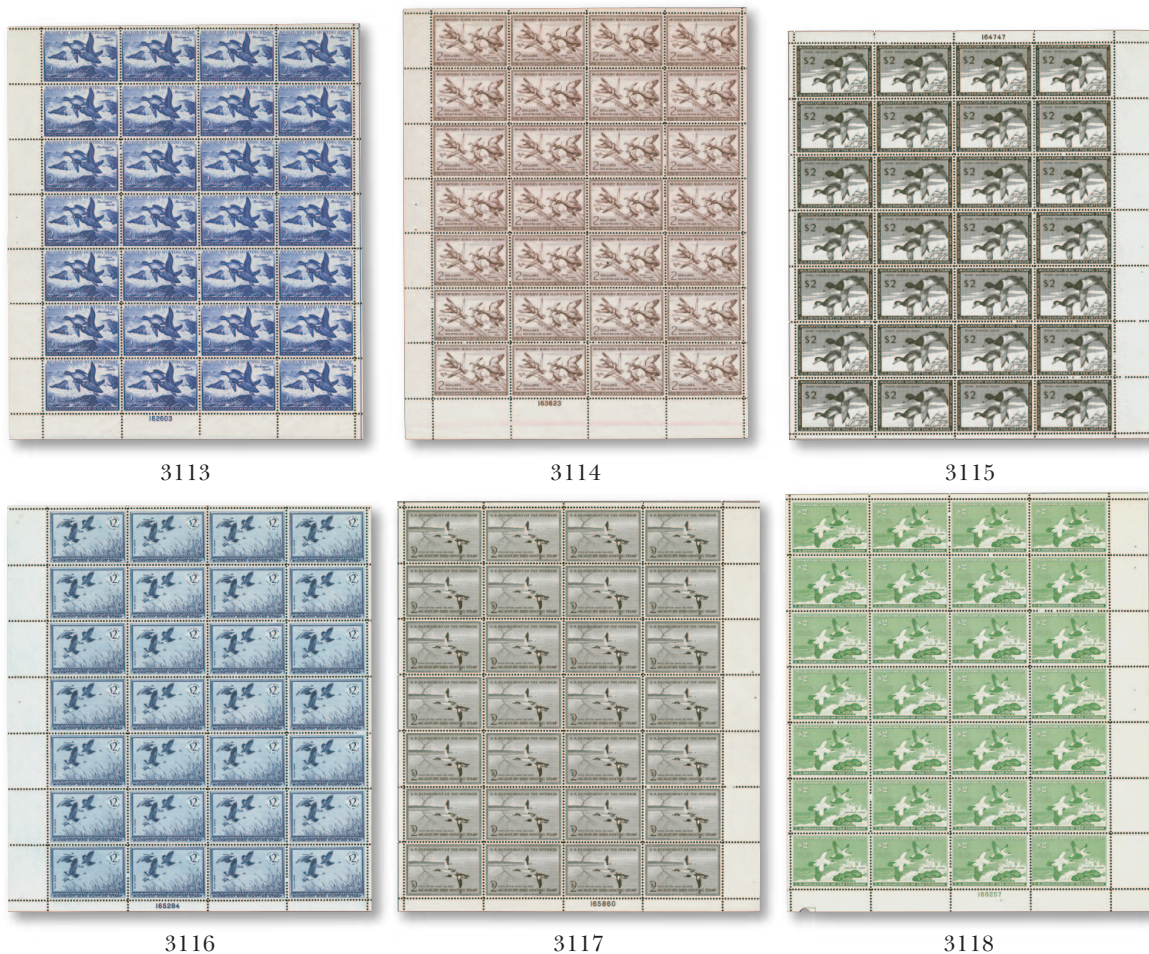
3111

- 3109 ★★田 **\$1.00 Bright Blue, 1948 Hunting Permit (RW15).** Complete Mint N.H. pane of 28 with bottom left plate no. 160101 and selvage on all sides, crisp impression, some natural gum skips, three stamps at left natural paper wrinkle, Very Fine and attractive, Scott value as plate block of six and singles..... 1,720.00
- 3110 ★★田 **\$2.00 Bright Green, 1949 Hunting Permit (RW16).** Complete Mint N.H. pane of 28 with top left plate no. 160792 and selvage on all sides, typical selvage width for this issue, bright color, well-balanced margins, few small natural gum skips, Very Fine-Extremely Fine, Scott value as plate block of six and singles..... 1,965.00
- 3111 ★★田 **\$2.00 Violet, 1950 Hunting Permit (RW17).** Complete Mint N.H. pane of 28 with top left plate no. 161536 and selvage on all sides, deep rich color, well-balanced margins, few tiny natural gum skips, fresh and Very Fine-Extremely Fine, Scott value as plate block of six and singles..... 2,530.00



3112

- 3112 ★★田 **\$2.00 Gray Black, 1951 Hunting Permit (RW18).** Complete Mint N.H. pane of 28 with bottom left plate no. 162128 and selvage on all sides, bright shade, choice centering throughout, usual light natural gum skips and bends, Very Fine-Extremely Fine, a rare pane, we have offered only one other since keeping computerized records, Scott value as plate block of six and singles..... 2,530.00



- 3113 ★★田 \$2.00 Deep Ultramarine, 1952 Hunting Permit (RW19). Complete Mint N.H. pane of 28 with bottom left plate no. 162603 and selvage on all sides, deep rich color and detailed impression, natural gum bends, few small natural gum skips, Very Fine, Scott value as plate block of six and singles..... 2,530.00
- 3114 ★★田 \$2.00 Deep Brown Rose, 1953 Hunting Permit (RW20). Complete Mint N.H. pane of 28 with bottom left plate no. 163623 and selvage on all sides, bright color, well-balanced margins, usual natural gum skips and bends, fresh and Very Fine-Extremely Fine, surprisingly rare, we have offered only one other since keeping computerized records, Scott value as plate block of six and singles..... 2,530.00
- 3115 ★★田 \$2.00 Black, 1954 Hunting Permit (RW21). Complete Mint N.H. pane of 28 with top right plate no. 164747 and selvage on all sides, typical narrow plate number selvage — all plate blocks we have ever offered have this width of selvage — crisp impression, gorgeous centering throughout, Extremely Fine Gem, a superb and rare pane, this is the first issue with the inscription on back printed on top of the gum, this was the only pane after RW6 missing from the William Webster collection and this is the first we have offered since keeping computerized records, Scott value as plate block of six and singles 2,420.00
- 3116 ★★田 \$2.00 Dark Blue, 1955 Hunting Permit (RW22). Complete Mint N.H. pane of 28 with bottom left plate no. 165284 and selvage on all sides, bright color, unusually choice centering, typical narrow selvage — all plate blocks we have ever offered have this width of selvage — Extremely Fine, a beautiful pane, Scott value as plate block of six and singles 2,445.00
- 3117 ★★田 \$2.00 Black, 1956 Hunting Permit (RW23). Complete Mint N.H. pane of 28 with bottom right plate no. 165860 and selvage on all sides, typical plate number selvage width — all plate blocks we have ever offered have this selvage width — bright shade, beautiful centering, Extremely Fine pane, Scott value as plate block of six and singles..... 2,445.00
- 3118 ★★田 \$2.00 Emerald, 1957 Hunting Permit (RW24). Complete Mint N.H. pane of 28 with bottom right plate no. 166257 and selvage on all sides, radiant color, typical width for plate number selvage — all plate blocks we have ever offered have selvage around this width — gorgeous centering throughout, small circle out of selvage at lower left seems to coincide with a printed box in that corner, Extremely Fine, a beautiful pane, Scott value as plate block of six and singles.... 2,445.00



3119

3121

3122

- 3119 ★★田 **\$2.00 Black, 1958 Hunting Permit (RW25).** Complete Mint N.H. pane of 28 with top left plate no. 166755 and selva on all sides, detailed impression, well-balanced margins, Very Fine-Extremely Fine, Scott value as plate block of six and singles 2,445.00



3120

- 3120 ★★田 **\$3.00 1959 Hunting Permit (RW26).** Complete Mint N.H. pane of 30 with bottom left plate no. 167120 and selva on all sides, rich colors, choice centering throughout

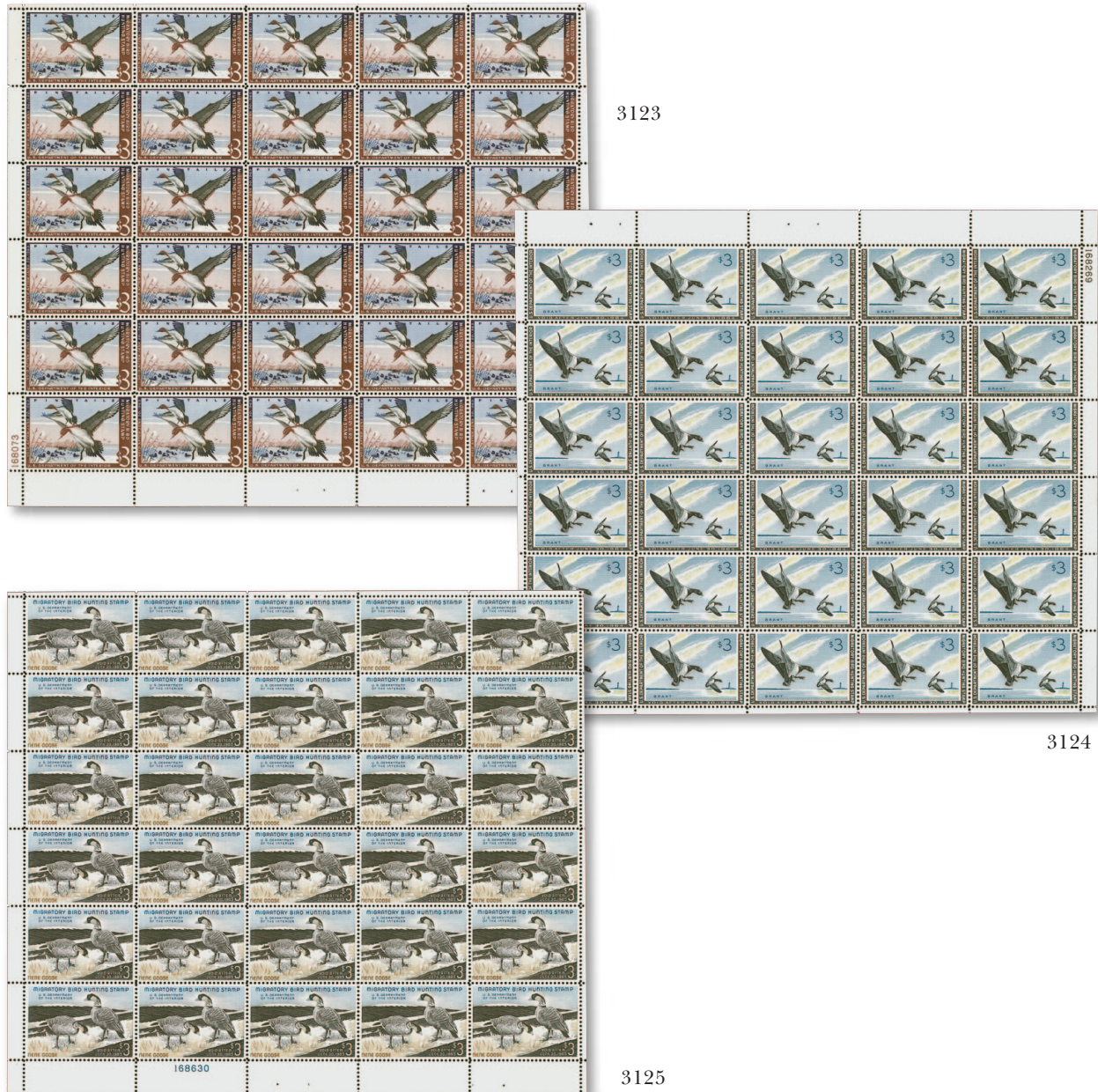
FRESH AND VERY FINE COMPLETE PANE OF 30 OF THE \$3.00 1959 HUNTING PERMIT, SCOTT RW26.

This issue is one of many firsts for the federal Hunting Permits. It was the first \$3.00 denomination, the first produced on a rotary printing press, the first produced using more than one color, the first to depict a subject other than waterfowl and the first to have a slogan. This remains one of the most popular designs of the entire program.

Scott value as plate block of four and singles 3,930.00

- 3121 ★★田 **\$3.00 1960 Hunting Permit (RW27).** Complete Mint N.H. pane of 30 with top left plate no. 167498 and selva on all sides, bright colors, choice centering, fresh and Very Fine-Extremely Fine, Scott value as plate block of four and singles 2,895.00

- 3122 ★★田 **\$3.00 1961 Hunting Permit (RW28).** Complete Mint N.H. pane of 30 with top right plate no. 167768 and selva on all sides, bright colors, beautiful centering, Very Fine-Extremely Fine, Scott value as plate block of four and singles 2,920.00



3123 ★★田 **\$3.00 1962 Hunting Permit (RW29)**. Complete Mint N.H. pane of 30 with bottom left plate no. 168073 and selvage on all sides, rich colors, gorgeous centering, Extremely Fine, Scott value as plate block of four and singles..... 3,360.00

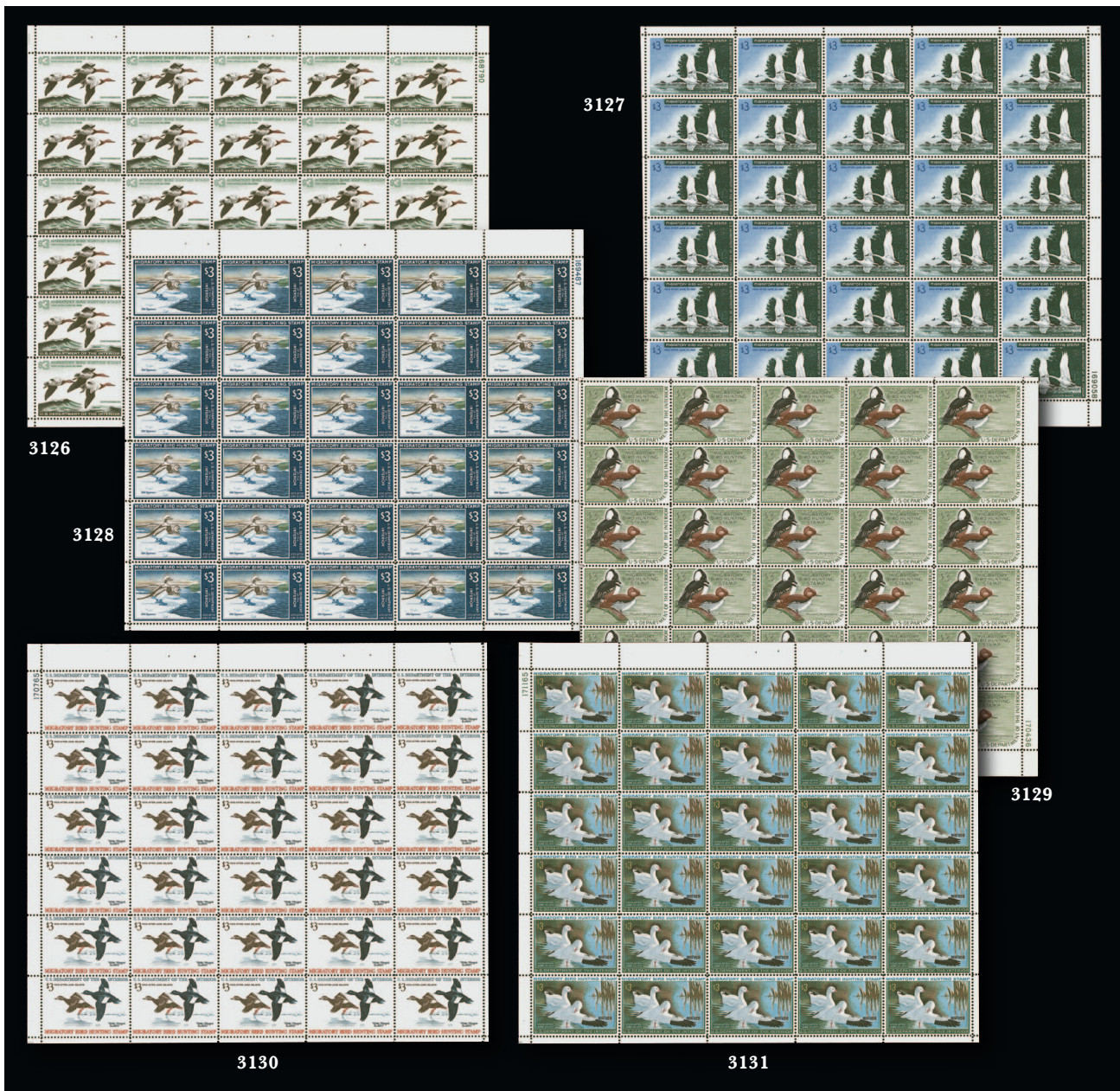
3124 ★★田 **\$3.00 1963 Hunting Permit (RW30)**. Complete Mint N.H. pane of 30 with top right plate no. 168269 and selvage on all sides, bright colors, fresh and Very Fine-Extremely Fine, Scott value as plate block of four and singles..... 3,050.00

3125 ★★田 **\$3.00 1964 Hunting Permit (RW31)**. Complete Mint N.H. pane of 30 with bottom left plate no. 168630 and selvage on all sides, rich colors, balanced margins

VERY FINE-EXTREMELY FINE. A RARE COMPLETE PANE OF 30 OF THE \$3.00 1964 HUNTING PERMIT, SCOTT RW31.

Beginning in 1959 Hunting Permit stamps were printed by rotary press and plate blocks could therefore be collected as corner blocks of four. This 1964 issue had the plate number mistakenly entered above the second stamp from the top or bottom left. Collectors assumed a plate block of four was still the correct format and many sheets were broken in this manner before the realization that the correct format for this issue is a block of six. We have offered only one other pane since keeping computerized records, which was signed and had toning so was not as pristine as the example offered here.

Scott value as plate block of six and singles..... 4,350.00



- 3126 ★★田 \$3.00 1965 Hunting Permit (RW32). Complete Mint N.H. pane of 30 with top right plate no. 168790 and selvage on all sides, rich colors, Very Fine and attractive, Scott value as plate block of four and singles 3,050.00
- 3127 ★★田 \$3.00 1966 Hunting Permit (RW33). Complete Mint N.H. pane of 30 with bottom right plate no. 169058 and selvage on all sides, deep rich colors on bright paper, beautiful centering throughout, Very Fine-Extremely Fine, Scott value as plate block of four and singles..... 3,100.00
- 3128 ★★田 \$3.00 1967 Hunting Permit (RW34). Complete Mint N.H. pane of 30 with top right plate no. 169487 and selvage on all sides, rich colors on bright paper, Extremely Fine, a beautiful pane, Scott value as plate block of four and singles 3,150.00
- 3129 ★★田 \$3.00 1968 Hunting Permit (RW35). Complete Mint N.H. pane of 30 with bottom right plate no. 170436 and selvage on all sides, rich colors, fresh and Very Fine-Extremely Fine, Scott value as plate block of four and singles 1,990.00
- 3130 ★★田 \$3.00 1969 Hunting Permit (RW36). Complete Mint N.H. pane of 30 with top left plate no. 170765 and selvage on all sides, rich colors, small bit of extra printing ink in selvage at upper right, Very Fine-Extremely Fine pane, Scott value as plate block of four and singles..... 1,965.00
- 3131 ★★田 \$3.00 1970 Hunting Permit (RW37). Complete Mint N.H. pane of 30 with top left plate no. 171165 and selvage on all sides, lovely colors on bright paper, choice centering, Very Fine-Extremely Fine, Scott value as plate block of four and singles..... 1,970.00



- 3132 ★★田 **\$3.00 1971 Hunting Permit (RW38)**. Complete Mint N.H. pane of 30 with top right plate no. 171586 and selvage on all sides, pretty colors, well-balanced margins, fresh and Very Fine-Extremely Fine pane, Scott value as plate block of four and singles..... 1,285.00
- 3133 ★★田 **\$5.00 1972 Hunting Permit (RW39)**. Complete Mint N.H. pane of 30 with bottom left plate no. 171864 and selvage on all sides, deep rich colors, fresh and Very Fine-Extremely Fine, Scott value as plate block of four and singles..... 905.00
- 3134 ★★田 **\$15.00 2005 Hunting Permit (RW72)**. Mint N.H. **cross gutter block of 16**, each of the four panes contributes a plate no. S 11111 block of four, bright and fresh colors, Extremely Fine and rare, reportedly only 100 full sheets were released, this format with blocks of four is easily displayable on a page..... E. 1,000-1,500
- 3135 ★★ **\$15.00 2005 Hunting Permit, Souvenir Sheet, Artist Signed in Black (RW72b)**. Mint N.H., well-centered for this, Extremely Fine, 1,000 sheets were printed and sold for \$20.00 each, nearly all are artist signed with approximately 750 in black, 150 in blue and 100 in gold, footnote in Scott states "most examples are in the grade of F-VF" 1,950.00
- 3136 ★★ **\$15.00 2005 Hunting Permit, Souvenir Sheet, Artist Signed in Blue (RW72b)**. Mint N.H., attractive centering, fresh and Very Fine, much rarer signed in blue than in black, 1,000 sheets were printed and sold for \$20.00 each, nearly all are artist signed with approximately 750 in black, 150 in blue and 100 in gold, footnote in Scott states "most examples are in the grade of F-VF" 2,500.00
- 3137 ★★ **\$15.00 2005 Hunting Permit, Souvenir Sheet, Artist Signed in Gold (RW72b)**. Mint N.H., unusually well-centered for this, Extremely Fine and much rarer signed in gold than in black, 1,000 sheets were printed and sold for \$20.00 each, nearly all are artist signed with approximately 750 in black, 150 in blue and 100 in gold, footnote in Scott states "most examples are in the grade of F-VF" 3,000.00



3138

3138 ★★ **\$15.00 2005 Hunting Permit, Souvenir Sheet, Unsigned by Artist (RW72d).** Mint N.H., bright and fresh colors

VERY FINE AND EXTREMELY RARE UNSIGNED SOUVENIR SHEET OF THE 2005 HUNTING PERMIT ISSUE.

1,000 sheets were printed and sold for \$20.00 each. Nearly all are artist signed with approximately 750 in black, 150 in blue and 100 in gold. This unsigned version is vastly rarer than the any of the signed colors — despite this fact Scott prices this only \$250.00 higher than the gold signature (with 100 signed)..... 3,250.00

3139 ★★ **2006-2011 Hunting Permits, Souvenir Sheets, Artist Signed and Unsigned (RW73b-RW76b, RW78c).** Artist signed sheets for the years 2006-2009, including three of RW75b, missing RW76b, finally No. RW78c is the unsigned error(Website PDF) 680.00



3140

3140 ★★田 **\$15.00 2006 Hunting Permit (RW73).** Complete sheet of four panes, Mint N.H., rich colors, faint crease at top left of little consequence, Very Fine and choice, a rare complete sheet, Scott value as plate blocks and singles 2,160.00

3141 ★★田 **\$5.00-\$25.00 1973-2021 Hunting Permits (RW40-RW88).** Complete set of Mint N.H. full panes of 30 (or panes of 20 for RW67 and later), fresh colors, many outstanding centered stamps present

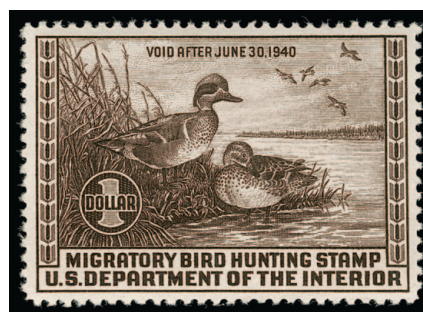
VERY FINE-EXTREMELY FINE. A DESIRABLE "COLLECTOR'S SET" OF COMPLETE PANES OF THE 1973-2021 HUNTING PERMITS.

An excellent opportunity to acquire a complete run of panes of these issues. Scott value as plate blocks and singles.....*Not illustrated* 34,132.50

GRADED STAMPS



3142



3143

- 3142 ★★ **\$1.00 1936 Hunting Permit (RW3).** Mint N.H., detailed impression, wide and balanced margins, Extremely Fine Gem, ex Myerson, with 2019 P.S.A.G. certificate with top plate number selva (Superb 98, selva accompanies)..... 325.00
- 3143 ★★ **\$1.00 1939 Hunting Permit (RW6).** Mint N.H., rich color and detailed impression, choice centering, Extremely Fine Gem, ex Myerson, with 2021 P.S.E. certificate (XF-Superb 95; SMQ \$750.00)..... 250.00



3144



3145

- 3144 ★★ **\$1.00 1941 Hunting Permit (RW8).** Mint N.H., perfectly centered with wide margins, fresh color and paper, Extremely Fine Gem, ex Myerson, with 2008 P.S.E. certificate (Superb 98; SMQ \$1,050.00), only two grade higher..... 210.00
- 3145 ★★ **\$1.00 1942 Hunting Permit (RW9).** Mint N.H., rich color, choice centering with wide and balanced margins, Extremely Fine Gem, ex Myerson, with 2008 P.S.E. certificate (XF-Superb 95; SMQ \$725.00)..... 225.00



3146



3147

- 3146 ★★ **\$1.00 1947 Hunting Permit (RW14).** Mint N.H., detailed impression on bright paper, beautiful centering, Extremely Fine Gem, ex Myerson, with 2007 P.S.E. certificate (Superb 98; SMQ \$425.00), only four grade higher..... 55.00
- 3147 ★★ **\$3.00 1960 Hunting Permit (RW27).** Mint N.H., with top selva, crisp impressions, gorgeous centering, Extremely Fine Gem, ex Myerson, with 2015 P.S.A.G. certificate (Gem 100)..... 95.00

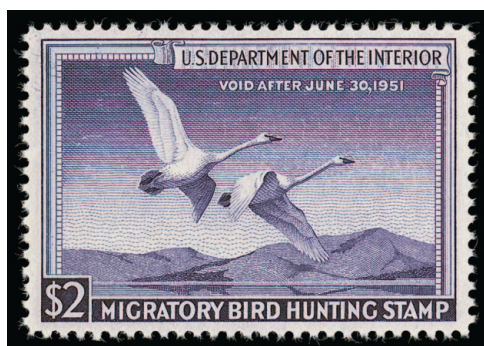


3148

- 3149 ★★ **\$3.00 1971 Hunting Permit (RW38).** Mint N.H., mathematically perfect centering, brilliant colors, Extremely Fine Gem, with 2005 P.S.E. certificate (Gem 100; SMQ \$300.00), the highest grade awarded 42.50



3149



3150EX

- 3150 ★★ **1946-54 Hunting Permits, Graded XF-Superb 95 and 95 Jumbo.** Five Mint N.H. stamps, four graded 95 including Nos. RW13, RW18, RW19 and RW21, also No. RW17 graded 95 Jumbo, Extremely Fine Gems, with 2005-2013 P.S.E. certificates, total SMQ value approximately \$1,200.00.... (Photo Ex) 405.00



3151EX



3152EX

- 3151 ★★ **1955-2000 Hunting Permits, Graded Superb 98 and Superb 98 Jumbo.** 29 Mint N.H. stamps, including Superb 98 Nos. RW22-RW26, RW29, RW32, RW34, RW37, RW41, RW43-RW46, RW49-RW50, RW52-RW53, RW55-RW59, RW62, RW64-RW67, Superb 98 Jumbo of No. RW51, No. RW25 with 2019 P.S.A.G. certificate, others with P.S.E. certificates between 2004 and 2019 with most after 2007, Extremely Fine Gems, total SMQ value approximately \$6,000.00 (Photo Ex) 1,278.00
- 3152 ★★ **1970-2014 Hunting Permits, Graded Gem 100.** 19 Mint N.H. stamps, each with P.S.E. certificate issued between 2004 and 2014, including Nos. RW40, RW47, RW54, RW60, RW61, RW63, RW68-RW77, RW79-RW81, Extremely Fine Gem group, perfection for these later Duck Stamps, total SMQ value approximately \$4,200.00 (Photo Ex) 505.00

ERRORS AND VARIETIES



3153

3153 (★) **\$1.00 Blue, 1934 Hunting Permit, Vertical Pair Imperforate Horizontally (RW1b).** Left selvage block of eight containing four error pairs, unused, gummed on the front, back without gum, deep rich color, light creasing and top pair with a couple small stain spots, top left stamp shallow thin spot

VERY FINE APPEARANCE. THIS IS THE UNIQUE BLOCK BEARING FOUR ERROR PAIRS OF THE 1934 FIRST HUNTING PERMIT ISSUE IMPERFORATE HORIZONTALLY. A MAGNIFICENT SHOWPIECE AND ONE OF THE HIGHLIGHTS OF THE PRAGER COLLECTION.

Specialists have searched for evidence of the origins of the 1934 Hunting Permit imperforate horizontally error, Scott RW1b (offered here), and the RW1 fully imperforate error. It is believed that only one pane of 28 imperforate horizontally was ever released, either through an official channel or as an internal release of discarded product, which would be extremely unusual for the Bureau of Engraving & Printing. The pane was broken up, yielding this left selvage block of eight, other vertical pairs and at least one strip of three. Pairs are known fully imperforate, but they all have narrow side margins and are now considered to be examples of the imperforate horizontally error with the vertical perforations trimmed off. There are no recorded horizontal imperforate pairs, which adds further credence to this theory.

This block of eight is the largest multiple in existence, as well as the largest remaining piece showing the original configuration of the error pane — perforated vertically and imperforate horizontally. It is the most iconic Federal Hunting Permit stamp error and one of the greatest 20th century philatelic errors. On the occasion of this offering, we wish to propose a theoretical connection between this error and the well-known part-imperforate errors of the National Parks issue — the 1c, 2c, 3c, 4c, 5c and 7c imperforate horizontally or vertically, with gum (not to be confused with the Farleys). The National Parks stamps and First Federal Duck Stamp were printed at the Bureau almost concurrently in mid-1934. The National Parks errors are believed to originate from one pane of each, and none have been traced to a post office. We think this is too much for pure coincidence.

Illustrated in *The Duck Stamp Story* on p. 107. Ex Rudy. With 1979 P.F. certificate... E. 30,000-40,000



3154EX front and back

- 3154 ★★ **\$1.00- \$2.00 1946-50 Hunting Permits (RW13-RW17).** Mint N.H. singles from Position 24 on the upper right pane, all with right selvage showing “**PL. 47510**” printed on the reverse, Fine-Very Fine, offset plate no. 47510 was used to print the waterfowl hunting message on the backs of the stamps, a footnote in Scott prices “plate blocks of six with side and bottom selvage” at \$550.00 each for Nos. RW13-RW15, and \$2,500.00 each for RW17, plate number singles are unpriced.....(Photo Ex/Website PDF) E. 500-750



3155 front and back

- 3155 **\$2.00 Dark Blue, 1955 Hunting Permit, Back Inscription Inverted (RW22a).** Used stamp with blue ink at upper left, called an “ink smear” on accompanying certificate, offset of inscription on front and small inconsequential scuff at left not mentioned on certificate

FINE AND EXTREMELY RARE EXAMPLE OF THE 1955 HUNTING PERMIT STAMP, INSCRIPTION INVERTED ERROR. THIS IS REPORTED TO BE THE ONLY USED EXAMPLE KNOWN.

The inscriptions printed on the back of Federal Hunting Permit stamps, warning hunters to sign their stamps, began with the 1946 Issue (RW13) and continued until the self-adhesive stamps of the late 1990's. The Scott Specialized Catalogue states that starting in 1954 (RW21), the inscription was printed on top of the gum, but on this example from the 1955 Issue that is clearly not the case. This is the only used example of RW22a according to the Datz catalogue.

With 2009 P.F. certificate and specifically priced in Scott as used. 4,500.00



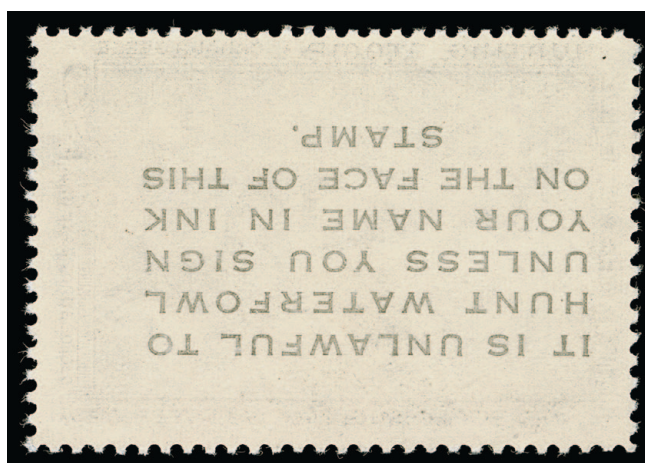
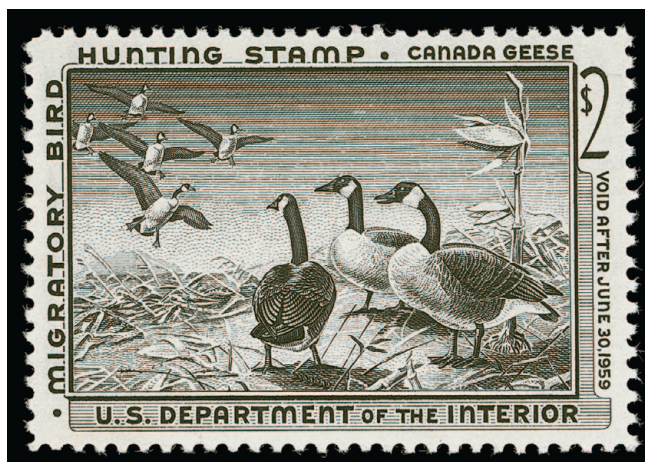
3156 front and back

- 3156 ★ **\$2.00 Emerald, 1957 Hunting Permit, Back Inscription Inverted (RW24a).** Original gum, lightly hinged, bright color, few perfs at lower left with small stain

VERY FINE APPEARANCE. AN EXTREMELY RARE EXAMPLE OF THE \$2.00 1957 HUNTING PERMIT WITH THE BACK INSCRIPTION INVERTED.

The inscriptions printed on the back of Federal Hunting Permit stamps, warning hunters to sign their stamps, began with the 1946 Issue (RW13) and continued until the self-adhesive stamps of the late 1990's. Only four Hunting Permit issues are listed with back inscription inverted: RW22a (two unused and one used known — the used offered in the previous lot), RW24a (6-8 known according to Datz, offered here), RW25a (one known, offered in the following lot) and RW26a (two known, one offered in lot 3158).

With 2007 P.S.E. certificate (F-VF 75; the error unpriced in SMQ)..... 7,500.00



3157 front and back

3157 ★★ **\$2.00 Black, 1958 Hunting Permit, Back Inscription Inverted (RW25a).** Mint N.H., choice centering, intense shade on bright white paper

EXTREMELY FINE. THIS IS THE UNIQUE EXAMPLE OF THE 1958 HUNTING PERMIT STAMP WITH BACK INSCRIPTION INVERTED. A WONDERFUL DUCK STAMP RARITY.

The inscriptions printed on the back of Federal Hunting Permit stamps, warning hunters to sign their stamps, began with the 1946 Issue (RW13) and continued until the self-adhesive stamps of the late 1990's. Only four Hunting Permit issues are listed with back inscription inverted: RW22a (two unused and one used known — the used example offered in lot 3155), RW24a (6-8 known according to Datz, one offered in previous lot), RW25a (one known, **the stamp offered here**) and RW26a (two known, one offered in the following lot).

With 2009 P.S.E. certificate. Unpriced in Scott. By way of comparison, the RW26a error, with two recorded examples, is priced at \$15,000.00..... E. 7,500-10,000



3158 front and back

3158 ★★ **\$3.00 1959 Hunting Permit, Back Inscription Inverted (RW26a).** Mint N.H. with right selvage, choice margins and centering, bright and fresh in every respect

EXTREMELY FINE. ONE OF TWO RECORDED UNUSED EXAMPLES OF THE 1959 HUNTING PERMIT STAMP, INSCRIPTION INVERTED ERROR.

The inscriptions printed on the back of Federal Hunting Permit stamps, warning hunters to sign their stamps, began with the 1946 Issue (RW13) and continued until the self-adhesive stamps of the late 1990's. Only four Hunting Permit issues are listed with back inscription inverted: RW22a (two unused and one used known — the used example offered in the lot 3155), RW24a (6-8 known according to Datz, one offered in lot 3156), RW25a (one known, offered in the previous lot) and RW26a (two unused known, offered here). The Datz catalogue states there are only two reported examples of Scott RW26a, but Scott also lists this used, so that example may be a third.

With 2008 P.S.E. certificate (VF-XF 85; the error unpriced in SMQ)..... 15,000.00



3159 front and back

- 3159 ★ **\$3.00 1962 Hunting Permit, Back Inscription Omitted (RW29a).** Original gum, accompanying P.F. certificate states Mint N.H. but we detect the faintest hinging at bottom (irrelevant as this is unique), brilliant colors and well-centered

VERY FINE. THE UNIQUE EXAMPLE OF THE 1962 HUNTING PERMIT ISSUE WITH BACK INSCRIPTION OMITTED.

In the whole history of the Federal Hunting Permit program, the back inscription omitted error only occurred during five years — 1962 (the example offered here), 1968 (offered in the following lot), 1974 (technically not omitted but printed on front due to a foldover), 1990 and 2003. For the two later years (1990 and 2003), Datz records 150 and 12 examples respectively. The greatest rarities of this variety are this unique example from 1962 and the also unique 1968 and 1974 errors.

With 1995 P.F. certificate as Mint N.H. Also with 2013 A.P.S. certificate stating slightly disturbed original gum which is nonsense. Listed but unpriced in Scott. ... E. 5,000-7,500



3160 front and back

- 3160 ★ **\$3.00 1968 Hunting Permit, Back Inscription Omitted (RW35a).** With bottom right corner **plate no. 170443 selvage**, original gum somewhat harshly called "slightly disturbed" on accompanying certificates, again irrelevant as this is unique, brilliant colors

VERY FINE. THE UNIQUE EXAMPLE OF THE 1968 HUNTING PERMIT ISSUE WITH BACK INSCRIPTION OMITTED.

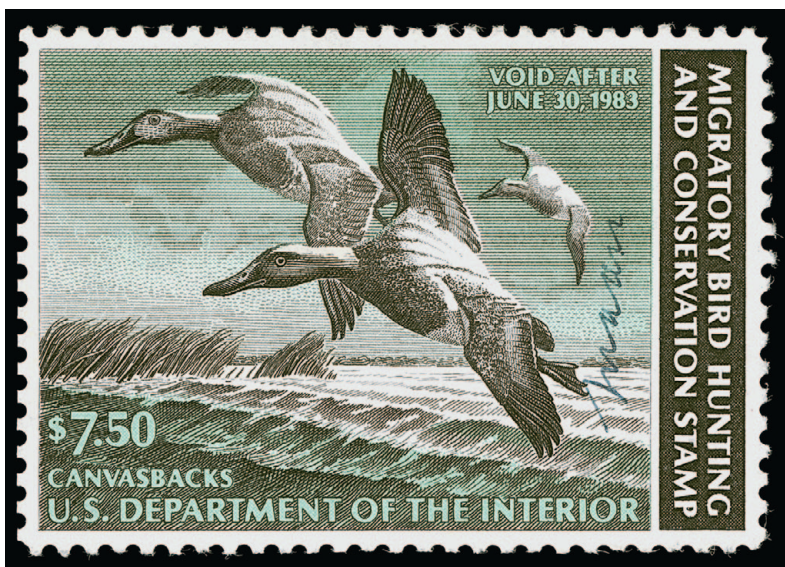
In the whole history of the Federal Hunting Permit program, the back inscription omitted error only occurred during five years — 1962 (offered in the previous lot), 1968 (offered here), 1974 (technically not omitted but printed on front due to a foldover), 1990 and 2003. For the two later years (1990 and 2003), Datz records 150 and 12 examples respectively. The greatest rarities of this variety are this unique example from 1968 and the also unique 1962 and 1974 errors.

With 2013 A.P.S. and 2003 P.F. certificates. Listed but unpriced in Scott. . E. 5,000-7,500



3161

- 3161 ★★ **\$7.50 1981 Hunting Permit (RW48).** Mint N.H., with dramatic **color shift**, the duck images far out of registration, also **signed** by the artist John S. Wilson, Very Fine and dramatic color shift, accompanied by normal for comparison E. 300-400

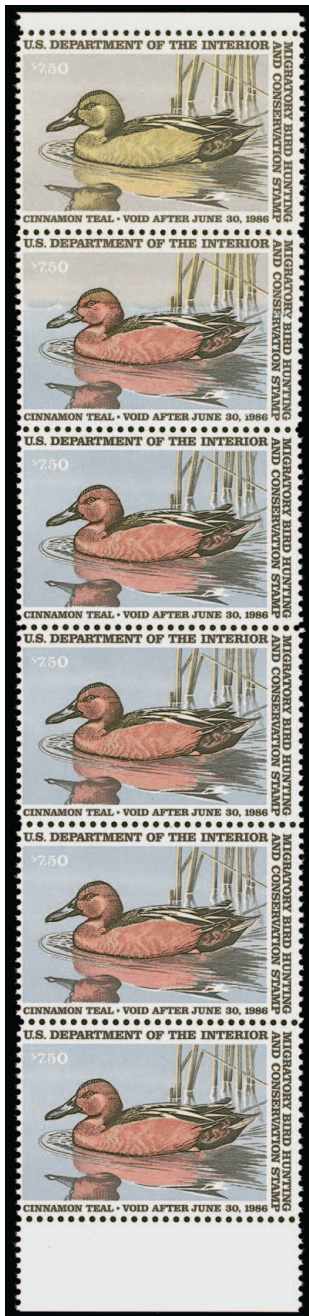


3162

- 3162 **\$7.50 1982 Hunting Permit, Orange and Violet Omitted (RW49a).** Used with **signature** of artist (David A.) "Mass" at right, well-centered

VERY FINE AND EXTREMELY RARE EXAMPLE OF THE 1982 HUNTING PERMIT ISSUE WITH ORANGE AND VIOLET COLORS OMITTED. THIS IS THE ONLY USED EXAMPLE IN THE PHILATELIC FOUNDATION RECORDS.

The Datz book states five examples are known. This is the only used stamp listed in The Philatelic Foundation records. With 1996 P.F. certificate. Scott value as unused.....
..... 10,000.00



3163

3163 ★★ **\$7.50 1985 Hunting Permit, Light Blue Lithographed Omitted (RW52a).** Vertical strip of five with selvage at top and bottom, top stamp completely lacking Light Blue, second stamp partly lacking Light Blue, bottom four stamps are normal, top stamp shows the Cinnamon Teal duck in yellow orange

VERY FINE. ONE OF ONLY FIVE RECORDED EXAMPLES OF THE LIGHT BLUE OMITTED ERROR ON RW52, WHICH ALL COME FROM THE SAME DISCOVERY SHEET. ONE OF THE GREATEST RARITIES OF HUNTING PERMIT COLLECTING.

According to the Scott Catalogue, the omitted color on No. RW52a coincides with a double paper splice affecting the top row of five stamps from the sheet and the top third of the stamps in the second row. There is also a color changeling of the brownish red ducks and their reflections in the water to yellow and yellow orange, respectively, on the error stamps (the Cinnamon Teal variety). The error currently exists as three vertical strips of six (top stamps the error) and a plate block of twelve (plate number at bottom left, top stamps the error).

With copy of 2006 P.F. certificate for the discovery sheet. ... 20,000.00



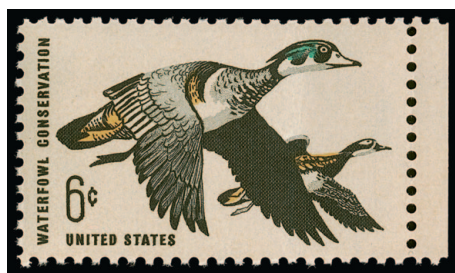
3164

- 3164 ★★ **\$7.50 1986 Hunting Permit, Black Engraved Omitted (RW53a).** Mint N.H., rich colors, Very Fine example of this distinctive color-missing error, approximately 60 are believed to exist, accompanied by normal stamp for comparison 1,450.00



3165

- 3165 ★★ **\$15.00 1993 Hunting Permit, Black Engraved Omitted (RW60a).** Mint N.H., bright colors, fresh and Very Fine example of this scarce error, normal stamp accompanies for comparison 1,750.00



3166

- 3166 ★★ **6c Waterfowl Conservation, Red & Dark Blue Omitted (1362b).** Mint N.H. with selvage at right, vertical crease, Very Fine..... 350.00

- 3167 ★ **Duck Stamp Varieties, Freaks, Oddities and Errors.** More than 30 items mounted in an album, both Federal Duck Stamps and some regular U.S. postage depicting ducks, variety of material including lots of color shifts, wild misperfs, double perfs, offset, gutter snipe, imperforate between (2484f), pre-printing paper folds, reverse printing in black instead of grey, plate and printing varieties, inscription omitted (R57a, Scott value \$300.00), others, Very Fine and fascinating group, see our website PDF for a complete scan..... (Website PDF) E. 750-1,000

FEDERAL LICENSES AND COVERS



3168

3168

\$1.00 Blue, 1934 Hunting Permit (RW1). Affixed to Form 3333, clear strike of purple “Washington D.C. Aug. 24, 1934” cancel, “W.M. Mooney” at bottom, signed on back by owner

VERY FINE. AUGUST 24, 1934, WAS THE FIRST DAY THE RW1 HUNTING PERMIT STAMP WAS AVAILABLE FOR PUBLIC PURCHASE. FEWER THAN FIVE EXAMPLES ON FORM 3333 ARE RECORDED WITH THIS DATE.

The earliest dated examples of Form 3333 with RW1 are from August 22, 1934 — two days before public release. Only a small handful of these uses are known. They come from a group of RW1s purchased by artist J.N. “Ding” Darling, ahead of the public release date. Some of these were affixed to form 3333. This August 24 use is also extremely rare, with fewer than five known. E. 4,000-5,000



3169



3170

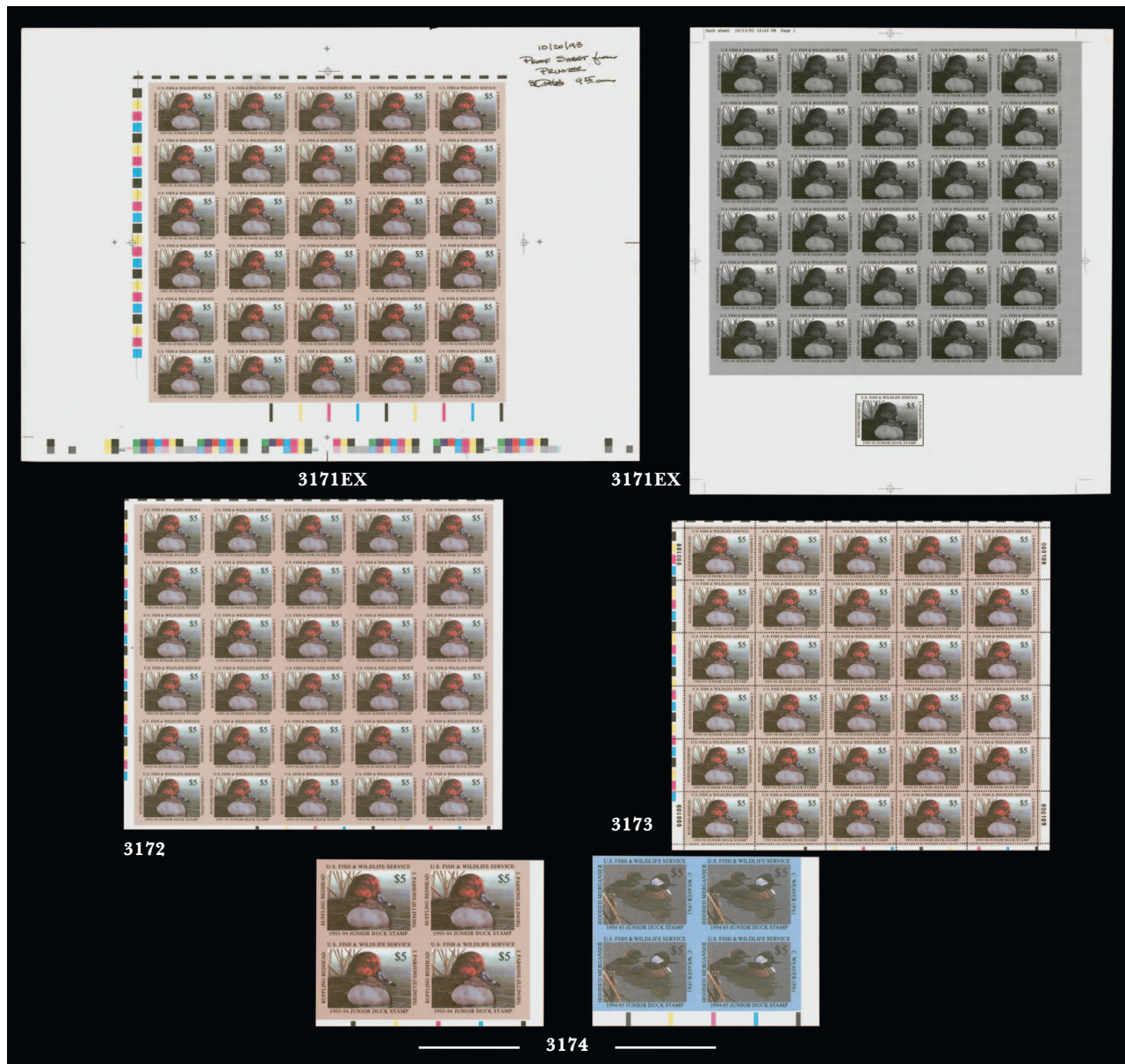
- 3169 ☒ **\$1.00 Blue, 1934 Hunting Permit (RW1).** Used with 3c Mt. Rainier (742) and tied together by "Newark N.J. Aug. 27 12:30 PM" circular datestamp on cover addressed to A.C. Roessler with illustrated "Hunting Permit 1 First Day Cover" purple cachet, Very Fine and unusual, the first day RW1 was available for public sale was Aug. 24, 1934, the first digit of the month in the datestamp is not perfectly clear but must be an Aug. 27 date E. 500-750
- 3170 ☒ **\$1.00 Rose Lake, 1935 Hunting Permit (RW2).** Used with 3c Nicolet's Landing (739) and tied by "Washington D.C. Jul. 2, 1935 3:30 PM" duplex datestamp on Roessler cover addressed to Robert Roe, "The Girl Stamp Dealer" in East Orange N.J., with illustrated "Hunting Permit 1 First Day Cover" black cachet, some slight soiling not affecting the stamps, Very Fine and unusual, the first day RW2 was available for sale was July 1, 1935, making this a second day philatelic use E. 500-750



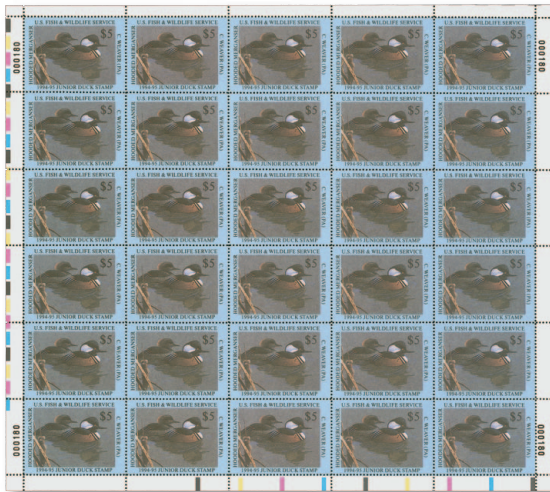
3170A

- 3170A ☒ **\$1.00 Brown Black, 1936 Hunting Permit (RW3).** Tied by "Newark N.J. Jul. 1, 1936" circular datestamp on 1c postal card addressed to Roessler in East Orange N.J., Very Fine, after previous attempts with RW1 and RW2, demonstrated in the two prior lots in this sale, Roessler finally succeeded in making a Federal Hunting Permit stamp **First Day cover** with the RW3 offered here E. 1,000-1,500

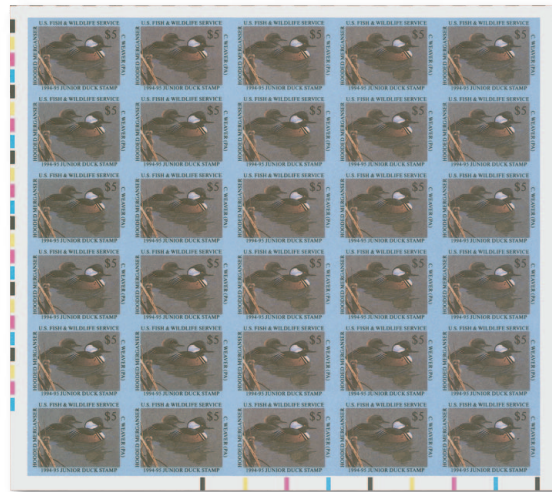
JUNIOR DUCK STAMPS



- 3171 **\$5.00 1993 Junior Duck Stamp, Production Material.** Fascinating group of four items enclosed in glass panels, first is 228 x 165mm design of the redhead duck marked "2nd Proof" and signed in margin with "Final", next is a photo negative of the sheet of 30 without any of the border inscriptions, normal stamp image at bottom of negative, next is a black and white full sheet with all inscriptions normal, finally an **imperforate** stamp proof sheet, with manuscript "10/20/93 Proof Sheet from Printer 955 am" and signed, lacking plate numbers, some minor wrinkling on the last, Very Fine and wonderful group of production items for the first Junior Duck stamp.....(Photo Ex) E. 1,500-2,000
- 3172 (★)田 **\$5.00 1993 Junior Duck Stamp, Imperforate (JDS1 var).** Full sheet of 30, lacking any perforations, also lacking plate numbers — normally this comes with plate numbers in each corner — without gum, Very Fine and very unusual, Scott notes these are believed to be printer's waste, Scott value as normal singles 3,000.00
- 3173 ★★田 **\$5.00 1993 Artist Signed Junior Duck Stamp (JDS1).** Mint N.H. full sheet of 30 with four plate no. blocks of four in corners, Very Fine and choice, Scott value with no premium for the plate blocks 3,000.00
- 3174 (★)田 **\$5.00 1993-1994 Junior Duck Stamp, Imperforate (JDS1 var, JDS2 var).** Mint N.H. blocks of four, without gum, rich colors, Very Fine, Scott notes these are believed to be printer's waste, Scott value as normal singles..... 1,000.00



3175



3176

- 3175 ★★ 田 \$5.00 1994 Junior Duck Stamp (JDS2). Mint N.H. full sheet of 30, with four plate no. blocks of four in corners, rich colors, fresh and Extremely Fine, Scott value as singles with no premium for the plate blocks..... 4,500.00
- 3176 (★) 田 \$5.00 1994 Junior Duck Stamp, Imperforate (JDS2 var). Full sheet of 30, lacking any perforations, also lacking plate numbers — normally this comes with plate numbers in each corner — without gum, Very Fine and very unusual, Scott notes these are believed to be printer's waste, Scott value as normal singles 4,500.00



3177

- 3177 ★★ 田 \$5.00 1995 Junior Duck Stamp (JDS3). Mint N.H. full sheet of 30, with four plate no. blocks of four in corners, rich colors
VERY FINE AND CHOICE. A RARE COMPLETE SHEET OF 30 OF THE 1995 JUNIOR DUCK STAMP ISSUE.
Scott value as singles with no premium for the plate blocks..... 12,750.00



3178

3178 ★★田 \$5.00 1996 Junior Duck Stamp (JDS4). Mint N.H. full sheet of 30, with four plate no. blocks of four in corners, rich colors

VERY FINE AND CHOICE. A RARE COMPLETE SHEET OF 30 OF THE 1996 JUNIOR DUCK STAMP ISSUE.

The artist — Clark Weaver of Pennsylvania — also won the competition for the 1994 Junior Duck Stamp design. Scott value as singles with no premium for the plate blocks. 15,000.00



3179

3179 ★★田 \$5.00 1997 Junior Duck Stamp (JDS5). Mint N.H. full sheet of 30, with four plate no. blocks of four in corners, rich colors

VERY FINE AND CHOICE. A RARE COMPLETE SHEET OF 30 OF THE 1997 JUNIOR DUCK STAMP ISSUE.

Scott value as singles with no premium for the plate blocks. 15,000.00



3180

3180 ★★田 \$5.00 1998 Junior Duck Stamp (JDS6). Mint N.H. full sheet of 30, with four plate no. blocks of four in corners, rich colors

VERY FINE AND CHOICE. A RARE COMPLETE SHEET OF 30 OF THE 1997 JUNIOR DUCK STAMP ISSUE.

Scott value as singles with no premium for the plate blocks..... 16,500.00

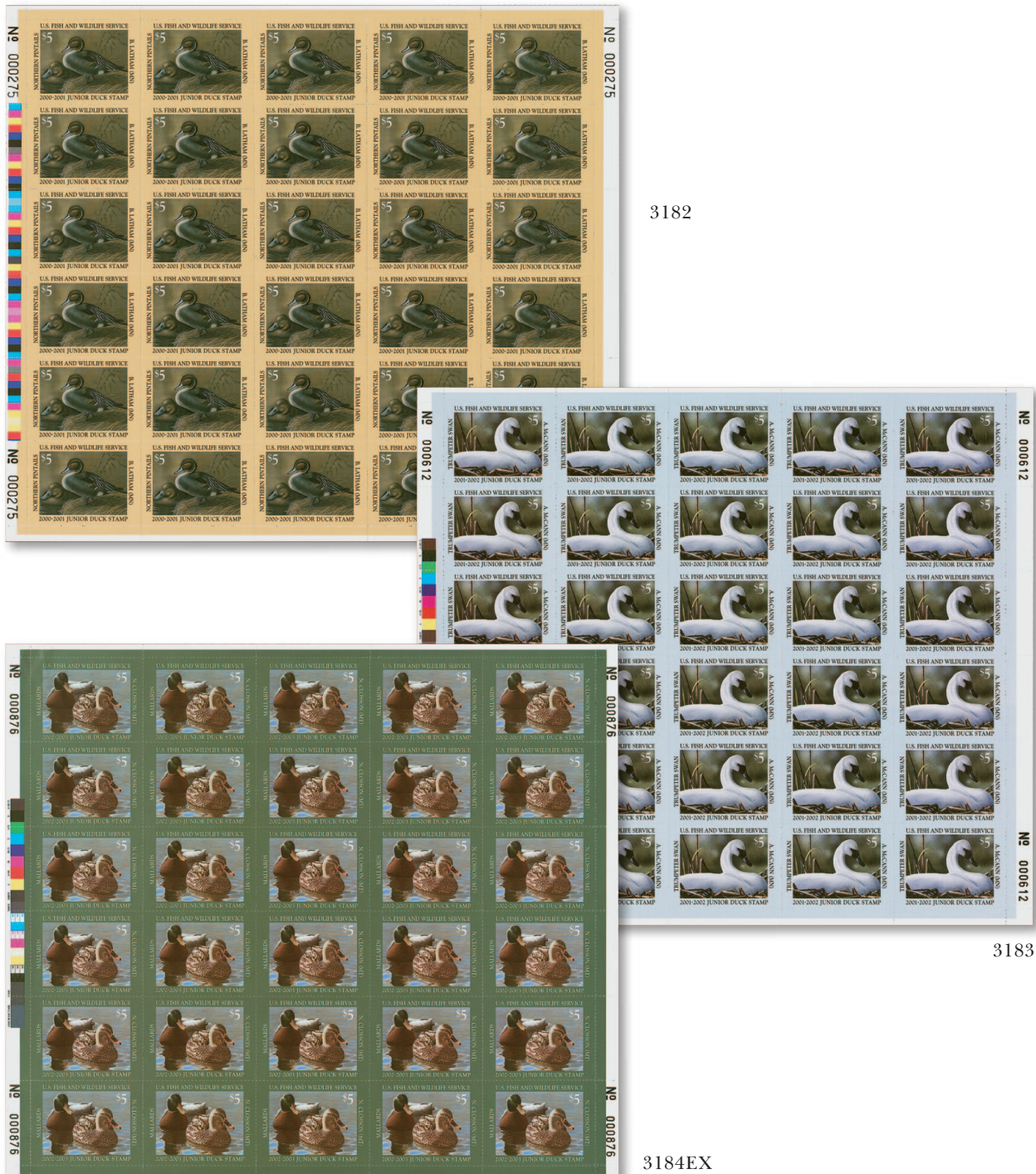


3181

3181 ★★田 \$5.00 1999 Junior Duck Stamp (JDS7). Mint N.H. full sheet of 30, with four plate no. blocks of four in corners, beautiful colors

VERY FINE AND CHOICE. A RARE COMPLETE SHEET OF 30 OF THE 1997 JUNIOR DUCK STAMP ISSUE.

Scott value as singles with no premium for the plate blocks..... 16,500.00



3182

3183

3184EX

3182 ★★田 **\$5.00 2000 Junior Duck Stamp (JDS8).** Mint N.H. full sheet of 30, with four plate no. blocks of four in corners, fresh, Very Fine and choice, a scarce complete sheet of 30, Scott value as singles with no premium for the plate blocks 4,500.00

3183 ★★田 **\$5.00 2001 Junior Duck Stamp (JDS9).** Mint N.H. full sheet of 30, with four plate no. blocks of four in corners, wonderful colors, Very Fine and choice, a scarce complete sheet of 30, Scott value as singles with no premium for the plate blocks 1,800.00

3184 ★★田 **\$5.00 2002-2021 Junior Duck Stamps (JDS10-JDS29).** Album containing Mint N.H. full sheets of 30, with four plate no. blocks of four in corners

VERY FINE AND CHOICE. A RARE OPPORTUNITY TO ACQUIRE A COMPLETE SET OF SHEETS FOR THE 2002-2021 JUNIOR DUCK STAMP PROGRAM.

Scott value as singles with no premium for the plate blocks.(Photo Ex) 7,800.00

STATE HUNTING PERMIT STAMPS



3185EX

3185 ★★田 **State Hunting Permits First Sheets Collection.** 53 items in one binder with slipcase, intact sheets for the first pictorial Hunting Permit year issue for all states except California, Illinois, Missouri, New Hampshire, North Dakota and South Carolina (those are all offered individually in this sale), includes both denominations for Louisiana, two of each denomination for New Jersey, South Dakota is No. 3, both of Tennessee are represented, also with both of West Virginia, also includes three Chesapeake Bay conservation sheets signed by artist, does not include booklets unless that was the only way they were issued

FRESH AND VERY FINE. A SCARCE AND DESIRABLE COLLECTION OF FIRST-ISSUE STATEWIDE HUNTING PERMIT STAMPS IN COMPLETE SHEETS.

See our website PDF for a complete scan. Scott value as singles in excess of.....
(Photo Ex/Website PDF) 20,000.00



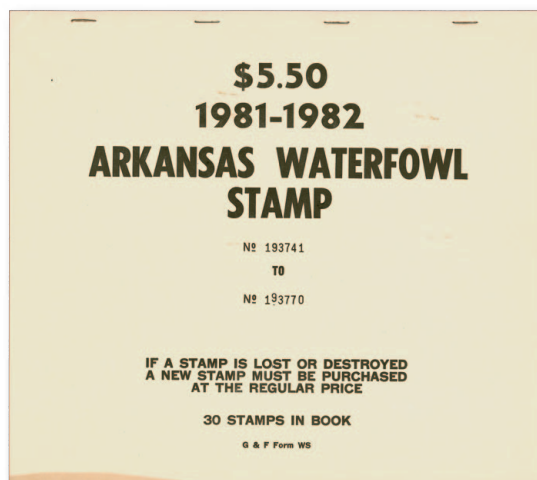
3186EX

3186 ★★田 **State Hunting Permits Governor Edition Sheets.** 28 sheets of Governor Edition State Hunting Permits in one binder with slipcover, including two of 1990 Arizona, 1989 Alaska, 1989 Montana, New Jersey Nos. 6c, 6Ae, 10d (signed), 10Ag (two, signed), 1989 New Hampshire, 1989 Oklahoma, 1989 West Virginia (resident and non-resident), Louisiana No. 1b four sheets with consecutive serial numbers, also Louisiana No. 1Ab four sheets with consecutive serial numbers, Rhode Island 1a four sheets with consecutive serial numbers, Mint N.H.

VERY FINE. A RARE AND DESIRABLE GROUP OF GOVERNOR EDITION STATE HUNTING PERMIT SHEETS. WE FEEL CONFIDENT WHEN WE STATE THAT THIS IS THE FINEST ASSEMBLAGE OF THESE ISSUES EVER FORMED.

The Governor Editions were a special limited edition offering, sold at a premium over face value, sometimes through sealed bid auctions. The proceeds were used to help waterfowl habitats. Scott value as singles(Photo Ex/Website PDF) 77,500.00

- 3187 ★★田 **Arkansas, \$5.50 1981 Mallards Hunting Permit, Booklet (AR 1a).** Complete booklet with Mint N.H. pane of 30 and covers with four staples, cover with identifying text "No. 193741 to No. 193770", cover only with trivial toned band at far bottom left. Very Fine and very rare, collectors were generally unaware that the stamps were available in booklet format and orders for collectors were filled from normal stock, the booklet panes differ from the normal sheets in that they have an extra row of selvage at top to accommodate the staples and so are different from the normally issued stamps, the experiment of making booklets was deemed a failure and discontinued, illustrated and described in a January 4, 1993 *Linn's Stamp News* article by Bob Dumaine who was aware of only three panes, listed but unpriced in Scott E. 2,000-3,000



3187

HONEY LAKE, CALIFORNIA WATERFOWL STAMPS



- 3188 ★★ **California, Honey Lake, \$5.00 on Dark Yellow, 1959 Waterfowl Hunting Permit (A4).** Mint N.H. with tab at top, numbered 462, fresh and Very Fine, starting in 1956 California followed Illinois and began requiring hunters to purchase stamps to affix to hunting licenses at two state owned public hunting properties, including Honey Lake in the Northeastern part of the state 900.00
- 3189 **California, Honey Lake, \$5.00 on White, 1960 Waterfowl Hunting Permit (A5).** Numbered 215 and signed, Very Fine and scarce 1,350.00
- 3190 **California, Honey Lake, \$5.00 on Bluish Green, 1961 Waterfowl Hunting Permit (A6).** Numbered 215 and signed, Very Fine and scarce 1,250.00
- 3191 **California, Honey Lake, \$5.00 on Dark Yellow, 1962 Waterfowl Hunting Permit (A7).** Numbered 292 and signed, Very Fine 950.00
- 3192 **California, Honey Lake, \$5.00 on White, 1963 Waterfowl Hunting Permit (A8).** Numbered 65 and signed, Very Fine and choice 400.00
- 3193 (★) **California, Honey Lake, \$6.50 on Pink, 1964 Waterfowl Hunting Permit (A9).** Unused (no gum), with tab at top, numbered 12, Very Fine, Scott value as original gum 950.00



- 3194 California, Honey Lake, \$6.50 on White, 1965 Waterfowl Hunting Permit (A10).
Numbered 206 and signed, Very Fine..... 350.00
- 3195 California, Honey Lake, \$6.50 on Yellow, 1966 Waterfowl Hunting Permit (A11).
Numbered 246 and signed, Very Fine, this was the last issue containing the printer's
information at bottom right 375.00
- 3196 California, Honey Lake, \$10.00 on Pink, 1967 Waterfowl Hunting Permit (A12).
Numbered 71 and signed, fresh and Very Fine 350.00
- 3197 California, Honey Lake, \$10.00 on Blue, 1968 Waterfowl Hunting Permit (A13).
Numbered 289 and signed, Very Fine..... 450.00
- 3198 California, Honey Lake, \$10.00 on Green, 1969 Waterfowl Hunting Permit (A14).
Numbered 628 and signed, Very Fine..... 475.00
- 3199 California, Honey Lake, \$15.00 on Pink, 1971 Waterfowl Hunting Permit (A16).
Numbered 128 and signed, Very Fine and scarce 1,750.00



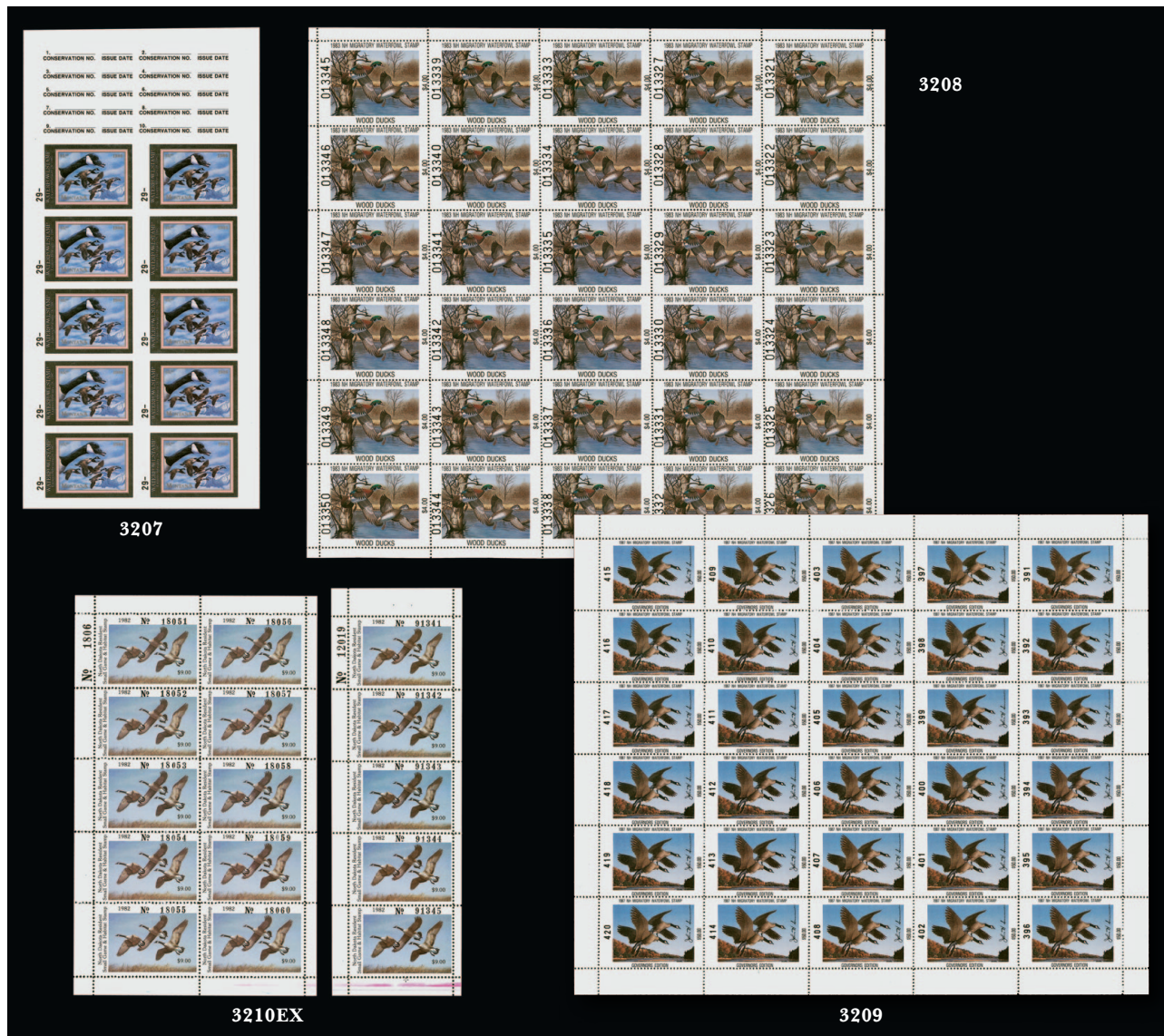
3200

- 3200 California, Honey Lake, \$15.00 on Blue, 1972 Waterfowl Hunting Permit (A16).
Numbered 181 and signed, vertical crease
at extreme right edge, Very Fine and very
rare, the 1972 issue is one of the most
elusive of the Honey Lake Waterfowl
stamps..... 3,900.00

- 3201 ★★ California, Honey Lake, \$15.00-\$20.00 1974-85 Waterfowl Hunting Permits (A19-A25,
A27-A30). Unused stamps with tabs at top, bright paper colors throughout, fresh and
Very Fine group.....(Photo Ex/Website PDF) 990.00



- 3202 ★★ **California, \$1.00 1971 Pintails Hunting Permit (CA 1).** Pane of five, with top selvage with staple holes, fresh and Very Fine, a rare complete pane, Scott value as singles 1,750.00
- 3203 ★★ **California, \$1.00 1972 Canvasbacks Hunting Permit (CA 2).** Bright colors, pristine condition, Very Fine and choice, scarce 1,100.00
- 3204 ★★ **Delaware, \$5.00 1983 Canvasbacks Hunting Permit, Imperforate (DE 4 var).** Mint N.H. horizontal pair, large margins, Very Fine and choice, a wonderful and rare variety, unlisted in Scott E. 500-750
- 3205 ★★田 **Illinois, \$5.00 1975 Mallard Hunting Permit (IL 1).** Block of ten, showing roulettes at left and straight edges on other sides, serial nos. 107361 thru 107370, fresh and Very Fine, a rare multiple, Scott value as singles 3,250.00
- 3206 ★★ **Missouri, \$3.40 1979 Waterfowl Hunting Permit (MO 1).** Mint N.H. sheet of five with tabs at left with serial nos. 124211 thru 124215, fresh and Very Fine, rare, Scott value as singles 2,000.00



- 3207 ★★田 **Montana, \$5.00 1986 Canada Geese Hunting Permit, Imperforate Booklet (MT 34 var).** Mint N.H. sheet of ten, with text on back and without serial numbers, Very Fine and very rare, perhaps three are recorded, Scott value as normal booklet pairs 8,750.00
- 3208 ★★田 **New Hampshire, \$4.00 1983 Wood Ducks Hunting Permit (NH 1).** Mint N.H. sheet of 30, serial nos. 013321 thru 013350, rich colors, fresh and Very Fine, scarce intact sheet, Scott value as singles..... 3,300.00
- 3209 ★★田 **New Hampshire, \$50.00 1987 Canada Geese Hunting Permit, Governor Edition (NH 5b).** Complete Mint N.H. sheet of 30 with selvage all around, nos. 391 thru 420, deep rich colors
 VERY FINE. A RARE COMPLETE SHEET OF 30 OF THE NEW HAMPSHIRE \$50.00 1987 GOVERNOR EDITION HUNTING PERMIT.
 Scott value as singles..... 6,000.00
- 3210 ★★田 **North Dakota, \$9.00 1982 Canada Geese Hunting Permits (ND 32).** Three items, including sheet of ten with serial nos. 18051 thru 18060, intact booklet pane of five with serial nos. 91341 thru 91345, also sheet of 30 with serial nos. 151811 thru 151820 in top two rows, nos. 155161 thru 155170 in second two rows and 158511 thru 158520 in bottom two rows, pristine condition
 VERY FINE. A REMARKABLY RARE GROUP OF PANES OR SHEETS FOR THE NORTH DAKOTA 1982 HUNTING PERMIT, SHOWING THE THREE DIFFERENT FORMATS AS ISSUED.
 The \$9.00 1982 North Dakota Hunting Permit was issued in sheets of ten, and all have serial numbers from 1-20,000. The booklets were issued in panes of five with selvage on both sides. The majority was issued in sheets of 30.
 Scott value as singles.....(Photo Ex/Website PDF) 5,650.00



- 3211 ★★ **Ohio, \$5.75 1983 Mallards Hunting Permit, Imperforate Vertically (OH 2 var).** Mint N.H. pair with right sheet margin, with full text on back and no serial numbers, Very Fine and choice, only one sheet of 16 believed to exist, unlisted in Scott E. 750-1,000
- 3212 ★★田 **Rhode Island, \$7.50 + 50c Canada Geese, Wood Ducks & Labrador Retriever Hunting Permits, Governor Editions (RI 2a, 3a).** Three Mint N.H. sheets of 30, No. 2a without serial numbers, first No. 3a signed on each stamp and with **serial nos. 0001 thru 0030**, second No. 3a without serial nos., fresh and Very Fine group, especially desirable 2a sheet with the first serial numbers, Scott value as singles..... (Photo Ex/Website PDF) 5,775.00
- 3213 ★★田 **South Carolina, \$5.50 1981 Wood Ducks Hunting Permit (SC 1).** Mint N.H. sheet of 30 with plate no. 00030 at all four corners, rich colors, Very Fine-Extremely Fine, Scott value as singles 1,800.00
- 3214 ★★ **South Carolina, \$5.50 1983 Pintails Hunting Permit, Imperforate (SC 3 var).** Horizontal pair, with writing on back but with no serial numbers, large margins, Very Fine and choice, very rare as only one sheet believed to exist, unlisted in Scott E. 750-1,000



3215EX



3216EX



3217EX



3218EX

- 3215 ★★ **State Duck Stamp Errors and Varieties.** 17 items, including Delaware No. 2 pair imperf vertically, Georgia No. 5 pair imperforate between, Hawaii No. 1 souvenir sheet imperforate, Rhode Island 8a block of six with five of six stamps signed by artist, Rhode Island Nos. 3, 4 and 5 in blocks of four dated and signed with "Approved for color and design", Oregon 11c normal, imperforate and signed by artist, Pennsylvania No. 1 sheet of ten with plate number inverted (appears upside down above top right stamp), also Pennsylvania 10P3 proof sheet with gutter between columns and imperforate, some may be proofs or printer's waste but all are interesting items, Fine-Very Fine group(Photo Ex/Website PDF) E. 1,500-2,000
- 3216 ★★ **State Hunting Permits Collection.** Three Scott Specialty albums with slipcovers, appears to be complete for the basic stamps thru 2006 with the exception of California No. 2, few also have the 2007 issues, does not include validation or daily usage or other specialty, most all are in excellent condition
- VERY FINE. A RARE AND DESIRABLE COLLECTION OF STATE HUNTING PERMITS. A DIFFICULT GROUP TO ASSEMBLE.
- It can be very difficult to assemble a meaningful collection of the State Hunting Permit stamps, by virtue of the fact that there are simply so many of them. The collection offered here presents buyers with an outstanding opportunity to acquire most of them at one time.....
-(Photo Ex) E. 2,000-3,000
- 3217 ★★ **State Governor Edition Singles.** Beautifully mounted album of Governor Edition singles, almost all signed, fresh and Very Fine, an attractive collection E. 1,500-2,000
- 3218 ★★ **State Governor Edition Singles.** 120 Mint N.H. stamps in binder with slipcover, wide representation of states, most issues contain two of each including one signed, while not totally complete this is a comprehensive collection of these issues.....(Photo Ex/Website PDF) E. 1,500-2,000

END OF SALE — THANK YOU

Live and Absentee Internet Bidding at Siegel

**ALL INTERNET BIDDING IS NOW HANDLED DIRECTLY FROM THE SIEGEL WEBSITE
SALES ARE NO LONGER LISTED ON STAMP AUCTION NETWORK**

**REGISTERED BIDDERS MAY LEAVE BIDS IN ADVANCE OF THE SALE
AND BID LIVE DURING THE AUCTION**

DOWNLOAD THE SIEGEL APP FROM THE APPLE OR GOOGLE PLAY STORES

This step-by-step guide will instruct you how to register and use the bidding interface.

Start by following the simple steps to become a registered internet bidder.

Once you have been approved for bidding, you can leave bids in advance of the sale, listen to the auction and place bids live with the click of a mouse.

Registering with Siegel Auction Galleries

To bid, you must be registered and approved by Siegel.

To decide what you need to do, choose the description below that best fits you.



**I've already registered with Siegel and
have been approved by Siegel for internet bidding**

Internet bidding works by allowing registered bidders to observe and place bids, either before the sale or in real-time during the auction.

Live Internet Bidding will work with any browser on both PC and Mac operating systems, or with our app..

Before bidding by internet for the first time, we recommend observing an auction in progress. This will help you develop a feel for the sale tempo and bidding interface.

I'm a Siegel client, but I'm not registered to bid live

Go to bid.siegelauctions.com and click on **Login** at the top. Then click on the link for **Sign Up Now**. We will match your new signup to your existing account.

Log in and participate in the auction at bid.siegelauctions.com

When you're logged on as an internet bidder, the bidding interface shows a photo and description of the lot, the current bid (and your bidding status), options for placing competitive bids and buttons with bid increments.

- After you click on a bid amount, the auctioneer is immediately notified of your bid.
- Retracting a bid is not acceptable, so please bid carefully.
- You can track prior realizations from the bidding screen.



I want to become a Siegel client and bid in auctions

Go to bid.siegelauctions.com and click on **Login** at the top. Then click on the link for **Sign Up Now**. You will need to register and provide trade and banking references.

"System Down" or "Lost Connection" events do occasionally happen.

If you have any problems with Live Internet Bidding please call 212-753-6421 for immediate assistance.



BIDS

Use this form to submit absentee bids
or to confirm telephone bids

Sale 1258

June 14, 2022

PADDLE #

1

Please provide the following information:

NAME

ADDRESS

CITY/STATE/ZIP

PHONE MOBILE

EMAIL

2

Have you purchased from us in the past 5 years? ☐ Yes (please go to Section 3)
☐ No (references required below)

STAMP FIRM PHONE

STAMP FIRM PHONE

Please submit references at least **2 business days** before the sale. Bids from new clients will not be executed if satisfactory references are not received in time to be contacted.

3

- Enter the lot number and your corresponding maximum bid in the space below
- Use whole dollar amounts and bid according to the increments (see back of form)
- Bids do not include the **18% Buyer's Premium**, taxes, duty or shipping charges
- Absentee bids will advance at one increment over the next highest competing bid
- "Plus", "Break Tie" or "Buy" bids will not be executed
- Indicate any "Or" bids between lot number/bid entries and bracket your choices
- If you wish to limit the total amount of your bids, follow the instructions below

Lot #	Bid \$	Lot #	Bid \$	Lot #	Bid \$

☐ **Limit Bids:** Check this box if you wish to limit the total hammer price of your bids (excluding 18% Buyer's Premium, taxes, duty and shipping costs). Your bids will be executed until your bidding limit has been reached. The total amount you wish to bid is \$

4

By signing this form, you agree to all of the Conditions of Sale printed in the sale catalogue (printed and digital), including but not limited to a) payment in the manner demanded by the Siegel firm, and b) payment of the 18% Buyer's Premium, any sales tax or customs duty, shipping costs, late charges and

other prescribed charges. You agree that your bids will be executed as a courtesy by Siegel, but you waive the right to make any claim against Siegel or its employees arising from these bids or your participation in the sale. You agree to honor all bids as submitted, regardless of any errors or omissions.

SIGNED DATE

Mail the signed form to Siegel Bid Department, 6 West 48th St., 9th Floor, New York, NY 10036
or email to stamps@siegelauctions.com



Additional Bids

Sale 1258

June 14, 2022

PADDLE #

Lot #	Bid \$	Lot #	Bid \$	Lot #	Bid \$

Shipping & Insurance

We will be pleased to arrange for shipping and transit insurance for purchases in this sale, except for lots marked or announced as "floor sale only." To expedite billing and delivery to hundreds of buyers in each sale, we use standard charges for postage and insurance under our policy. These charges are based on the package weight and mailing requirements, according to the schedule shown here. Our standard charges do not include a fee for our services, and they may be slightly more or less than the actual postage or Fedex fee. We ask all buyers to remit the invoiced amount for shipping and insurance.

Transit insurance is provided in all cases, except when the buyer has furnished us with documentation that insurance is effective under the buyer's own policy.

There will be no added insurance charge for shipments of less than \$75,000 value. Shipments valued in excess of \$75,000 may require supplemental insurance and/or special courier service, the estimated cost of which will be furnished to the buyer prior to shipment. If the buyer refuses to pay the estimated charges or furnish proof of self-insured coverage, the buyer will be responsible for picking up the lots at our office and any resulting sales tax.

Standard Shipping Charges

Weight Class	Shipping Method	Charge
Up to 2 lbs.	Fedex Envelope	\$25
Over 2 lbs.	Fedex Box	\$35 - \$50*
Outside US	Fedex	\$50 - \$100**
Bulky Lots	Fedex Ground or Express	By weight
Value under \$500	Priority Mail Env	\$10.00
hammer	Priority Mail Box	\$25 - \$35

* Up to \$75,000 value and up to 5 lbs; additional charge may apply to packages exceeding limits

** Buyers outside United States are liable for any applicable customs duty and clearance charges. An accurate declaration of contents and value will be made on all packages and import/export documents. **Siegel may refuse to ship lots to certain countries with a high risk factor.**

2/2021

Bidding Increments

The auctioneer may regulate the bidding at his discretion. However, to assist absentee bidders in establishing their maximum bids, the increments shown here will be used in most cases. We recommend that written bids conform to these increments—bids that do not will be reduced accordingly.

Bid	Increment	Bid	Increment
Up to \$200	\$10	\$20,000-30,000	\$1,000
\$200-500	\$25	\$30,000-70,000	\$2,500
\$500-1,000	\$50	\$70,000-140,000	\$5,000
\$1,000-3,000	\$100	\$140,000-500,000	\$10,000
\$3,000-7,000	\$250	\$500,000-\$1m	\$25,000
\$7,000-20,000	\$500	Above \$1m	Discretionary