
THE
ALAN COLLECTION
OF BRITISH NORTH AMERICA



INTERNATIONAL
Robert A. Siegel
IN ASSOCIATION WITH CHARLES F. SHREVE

sale 1269 ¥ December 6, 2022

THE ALAN COLLECTION OF BRITISH NORTH AMERICA

SALE 1269—TUESDAY, DECEMBER 6, 2022, AT 10:30 A.M. (LOTS 1001-1059)



Live auction at 21 West 38th Street (off Fifth Avenue), 7th Floor, New York City

All lots sold subject to an **18% buyer's premium** and
applicable sales tax or customs duty

Please carefully read the Conditions of Sale before bidding

Presale Viewing:

Monday, December 5, 10am-4pm and by appointment (please call 212-753-6421)

Please note our new addresses in New York and Dallas:

NEW YORK
21 West 38th Street
7th Floor
New York, New York 10018

DALLAS
2911 Turtle Creek Blvd.
Suite 225
Dallas, Texas 75219

I N T E R N A T I O N A L
Robert A. Siegel
IN ASSOCIATION WITH CHARLES F. SHREVE

21 WEST 38TH STREET, 7TH FLOOR, NEW YORK, N.Y. 10018
Phone (212) 753-6421 • Email: stamps@siegelauctions.com

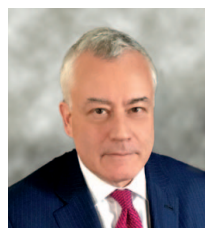
Catalogues, internet bidding, resources, archives and the Siegel Encyclopedia at
siegelauctions.com



INTERNATIONAL
Robert A. Siegel
 IN ASSOCIATION WITH CHARLES F. SHREVE

21 WEST 38TH STREET, 7TH FLOOR, NEW YORK, N.Y. 10018

Phone (212) 753-6421 • Email: stamps@siegelauctions.com
 siegelauctions.com



Scott R. Trepel
 President
 strepel
 @siegelauctions.com



John P. Zuckerman
 Senior Vice President
 jzuckerman
 @siegelauctions.com



Corey Long
 Senior Vice President
 clong
 @siegelauctions.com

Siegel International
 Dallas (214) 754-5991



Charles F. Shreve
 Director, Siegel International
 charles
 @siegelauctions.com



Samantha Aragon
 VP, Financial
 samantha
 @siegelauctions.com



Emily Singleton
 VP, Operations
 esingleton
 @siegelauctions.com



Andrea Moreno
 Operations
 andrea
 @siegelauctions.com



Andrew Titley
 VP, Siegel International
 andrew
 @siegelauctions.com



Chris Anderson
 International Specialist
 chris
 @siegelauctions.com

Information for Bidders

Bidding

The following means are available for placing bids:

- 1) **Public Attendance:** Attendance is now permitted for fully vaccinated individuals and for unvaccinated individuals who follow all guidelines to prevent the spread of COVID-19. Live bidding will also be facilitated by mail, email, phone or internet.
- 2) **Live Internet Bidding:** Instructions for participating as a Live Internet Bidder are provided on the page opposite.
- 3) **Phone Bidding:** Bidders can be connected to the sale by phone and bid through a member of staff. Requests for phone bidding are subject to approval (please contact our office at least 24 hours before the sale). A signed Bid Form is required.
- 4) **Absentee Bids:** All bids received in advance of the sale, either by mail, fax, phone, email or internet, are Absentee Bids, which instruct the auctioneer to bid up to a specific amount on one or more lots in the sale. Absentee Bids sent by phone, fax or email should arrive at least one hour prior to the start of the sale session. Bids entered through Live Internet Bidding will be visible to the auctioneer during the sale. Written bids should be entered legibly on the Bid Form in the sale catalogue. Email and internet bids should be carefully typed and double-checked. All new bidders must provide references.

Presale Viewing by Appointment Only

To prevent the spread of COVID-19, presale viewing will be permitted for fully vaccinated individuals or for unvaccinated individuals who agree to follow all protective measures. To make an appointment and receive instructions, please contact us at (212) 753-6421 or by email. We reserve the right to refuse, cancel or postpone a request or appointment.

Expert Certification

Individual items offered without a PF or PSE certificate dated within the past 5 years may be purchased subject to certification of genuineness and our description. **Please refer to the Conditions of Sale and Grading Terms for policies governing certification.**

Shipping and Delivery

Procedures and charges for shipping lots are printed on the back of the Bid Form. **Bidders are responsible for all prescribed shipping charges and any applicable sales tax or customs duties.**

Price Realized

Prices realized are sent with each invoice. Bidders with email will receive a Bid Results report after the sale. Session results are posted immediately to **siegelauctions.com**

Live and Absentee Internet Bidding at Siegel

ALL INTERNET BIDDING IS HANDLED DIRECTLY FROM THE SIEGEL WEBSITE

**REGISTERED BIDDERS MAY LEAVE BIDS IN ADVANCE OF THE SALE
AND BID LIVE DURING THE AUCTION**

DOWNLOAD THE SIEGEL APP FROM THE APPLE OR GOOGLE PLAY STORES

This step-by-step guide will instruct you how to register and use the bidding interface.

Start by following the simple steps to become a registered internet bidder.

Once you have been approved for bidding, you can leave bids in advance of the sale, listen to the auction and place bids live with the click of a mouse.

Registering with Siegel Auction Galleries

To bid, you must be registered and approved by Siegel.

To decide what you need to do, choose the description below that best fits you.



**I've already registered with Siegel and
have been approved by Siegel for internet bidding**

I'm a Siegel client, but I'm not registered to bid live
Go to bid.siegelauctions.com and click on **Login** at the top. Then click on the link for **Sign Up Now**. We will match your new signup to your existing account.

I want to become a Siegel client and bid in auctions
Go to bid.siegelauctions.com and click on **Login** at the top. Then click on the link for **Sign Up Now**. You will need to register and provide trade and banking references.

Internet bidding works by allowing registered bidders to observe and place bids, either before the sale or in real-time during the auction.

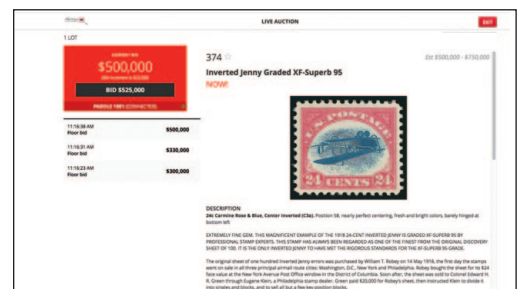
Live Internet Bidding will work with any browser on both PC and Mac operating systems, or with our app..

Before bidding by internet for the first time, we recommend observing an auction in progress. This will help you develop a feel for the sale tempo and bidding interface.

Log in and participate in the auction at bid.siegelauctions.com

When you're logged on as an internet bidder, the bidding interface shows a photo and description of the lot, the current bid (and your bidding status), options for placing competitive bids and buttons with bid increments.

- After you click on a bid amount, the auctioneer is immediately notified of your bid.
- Retracting a bid is not acceptable, so please bid carefully.
- You can track prior realizations from the bidding screen.



"System Down" or "Lost Connection" events do occasionally happen.

If you have any problems with Live Internet Bidding please call 212-753-6421 for immediate assistance.

Conditions of Sale (please read carefully before bidding)

THE PROPERTY IN THIS CATALOGUE WILL BE OFFERED AT PUBLIC AUCTION BY ROBERT A. SIEGEL AUCTION GALLERIES, INC. ("GALLERIES") ON BEHALF OF VARIOUS CONSIGNORS AND ITSELF OR AFFILIATED COMPANIES. BY BIDDING ON ANY LOT, WHETHER DIRECTLY OR THROUGH A THIRD PARTY, IN PERSON, BY TELEPHONE, FACSIMILE, INTERNET OR BY ANY OTHER MEANS, THE BIDDER ACKNOWLEDGES AND AGREES TO ALL OF THE FOLLOWING CONDITIONS OF SALE.

1. The highest bidder acknowledged by the auctioneer shall be the buyer. The term "final bid" means the last bid acknowledged by the auctioneer, which is normally the highest bid offered. **The purchase price payable by the buyer will be the sum of the final bid and a commission of 18% of the final bid ("buyer's premium"), together with any sales tax, use tax or customs duties due on the sale.**

2. The auctioneer has the right to reject any bid, to advance the bidding at his discretion and, in the event of a dispute, to determine the successful bidder, to continue the bidding or to reoffer and resell the lot in dispute. The Galleries' record of the final sale shall be conclusive.

3. All bids are per numbered lot in the catalogue unless otherwise announced by the auctioneer at the time of sale. The right is reserved to group two or more lots, to withdraw any lot or lots from the sale, or to act on behalf of the seller. The Galleries will execute bidding instructions on behalf of clients, but will not be responsible for the failure to execute such bids or for any errors in the execution of such bids.

4. **Lots with numbers followed by the symbol ° are offered subject to a confidential minimum bid ("reserve"), below which the lot will not be sold. The absence of the symbol ° means that the lot is offered without a reserve. If there is no reserve, the auctioneer has sole discretion to establish a minimum opening bid and may refuse an offer of less than half of the published estimate. Any lot that does not reach its reserve or opening bid requested by the auctioneer will be announced as "passed" and excluded from the prices realized lists after the sale. The Galleries may have a direct or indirect ownership interest in any or all lots in the sale resulting from an advance of monies or goods-in-trade or a guarantee of minimum net proceeds made by the Galleries to the seller.**

5. Subject to the exclusions listed in 5(A), the Galleries will accept the return of lots which have been misidentified or which have obvious faults that were present when the lot was in the Galleries' custody, but not so noted in the lot description. **All disputed lots must be received by the Galleries intact with the original packing material within 5 days of delivery to the buyer but no later than 30 days from the sale date.** (5A) **EXCLUSIONS:** The following lots may not be returned for any reason, or may not be returned for the reasons stated: i) lots containing 5 or more items; ii) lots from buyers who registered for the pre-sale exhibition or received lots by postal viewing, thereby having had the opportunity to inspect them before the sale; iii) any lot described with "faults," "defects" or a specific fault may not be returned because of any secondary fault; iv) photographed lots may not be returned because of centering, margins, short/nibbed perforations or other factors shown in the illustrations; v) the color of the item does not match the color reproduction in the sale catalogue or website listing; vi) the description contains inaccurate information about the quantity known or reported; or vii) a certification service grades a stamp lower than the grade stated in the description or on an accompanying certificate.

6. Successful bidders, unless they have established credit with the Galleries prior to the sale, must make payment in full before the lots will be delivered. Buyers not known to the Galleries must make payment in full within 3 days from the date of sale. **The Galleries retains the right to demand a cash deposit from anyone prior to bidder registration and/or to demand payment at the time the lot is knocked down to the highest bidder, for any reason whatsoever.** In the event that any buyer refuses or fails to make payment in cash for any lot at the time it is knocked down to him, the auctioneer reserves the right to reoffer the lot immediately for sale to the highest bidder. **Credit cards (Visa, Mastercard and Discover only) can be accepted as payment but will be subject to a 3% non-refundable Convenience Fee, which will be added to the total of the entire invoice (including hammer price, buyer's premium, shipping and transit insurance charges and any applicable taxes).** The buyer waives the right to dispute all credit card charges.

7. If the purchase price has not been paid within the time limit specified above, nor lots taken up within 7 days from the date of sale, the lots will be resold by whatever means deemed appropriate by the Galleries, and any loss incurred from resale will be charged to the defaulting buyer. **Any account more than 30 days in arrears will be subject to a late payment charge of 1½% per month as long as the account remains in arrears. Any expenses incurred in securing payment from delinquent accounts will be charged to the defaulter.** A fee of \$250.00 per check will be charged for each check returned for insufficient funds.

8. All lots are sold as genuine. **Any lot accompanied by a certificate issued by The Philatelic Foundation, British Philatelic Association, Royal Philatelic Society of London or any other authority recognized by the A.I.E.P. in a specific area of expertise, and dated within 5 years of the sale date, is sold "as is" and in accordance with the description on the certificate. Such lots may not be returned for any reason, including but not limited to a contrary certificate of opinion.** Buyers who wish to obtain a certificate for any item that does not have a certificate (dated as above) may do so, provided that the following conditions are met: (i) the purchase price must be paid in full, (ii) the item must be submitted to an acceptable expertizing committee with a properly executed application form within 21 days of the sale, (iii) a copy of the application form must be given to the Galleries, (iv) the Galleries retains the right to resubmit the item for reconsideration, without time limit or other restrictions, for the purpose of obtaining a satisfactory opinion, (v) lots submitted for certification will be considered cleared 90 days from the date of sale, whether or not a certificate has been issued, unless the Galleries issues written approval of a further extension of return privileges, and (vi) in the event the lot is determined to be misidentified or misdescribed, pursuant to 5 and 5(A) of these Conditions, the Galleries will issue a refund to the buyer for the full purchase price and actual certification fees up to \$800.00, but the reimbursement for certificate fees (and related costs) shall not exceed 10% of the hammer price of the lot.

9. Until paid for in full, all lots remain the property of the Galleries on behalf of the seller.

10. Agents executing bids on behalf of clients will be held responsible for all purchases made on behalf of clients unless otherwise arranged prior to the sale.

11. The buyer assumes all risk for delivery of purchased lots and agrees to pay for prescribed shipping costs. **Buyers who receive lots in the U.S. are obligated to pay whatever sales tax or compensating use tax might be due, at any time, and buyers outside the U.S. are responsible for all customs duties.**

12. The bidder consents that any action or proceeding against it may be commenced and maintained in any court within the State of New York or in the United States District Court for the Southern District of New York, that the courts of the State of New York and United States District Court for the Southern District of New York shall have jurisdiction with respect to the subject matter hereof and the person of the bidder. The bidder agrees not to assert any defense to any action or proceeding initiated by Galleries based upon improper venue or inconvenient forum. The bidder agrees that any action brought by the bidder shall be commenced and maintained only in a Federal Court in the United States District Court for the Southern District of New York or the State Court in the county in which Galleries has its principal place of business in New York. The bidder agrees not to use a public conflict resolution service and not to use any form of social media to publish comments or information about the Galleries and its employees which might harm the Galleries' reputation or business. These Conditions of Sale shall be governed by and construed in accordance with the substantive laws of the State of New York, and shall constitute an agreement that shall be binding on the parties, and their respective heirs, administrators, distributees, successors and assignees.

Revised 5/2018

Grades, Abbreviations and Values Used in Descriptions

Grades and Centering

Our descriptions contain detailed information and observations about each item's condition. We have also assigned grades to stamps and covers, which reflect our subjective assessment. For stamps, the margin width, centering and gum are described and graded according to generally-accepted standards (an approximate correlation to numeric grades is provided at right). Although we believe our grades are accurate, they are not always exactly aligned with third-party grading terms or standards for all issues. **A lot may not be returned because a certification service grades a stamp lower than the grade stated in the description. Information from the P.S.E. Stamp Market Quarterly and P.S.E. Population ReportSM is the most current available, but lots may not be returned due to errors or changes in statistics or data.**

Extremely Fine Gem (90-100): The term “Gem” describes condition that is the finest possible for the issue. This term is equivalent to “Superb” used by grading services.







Extremely Fine (80-90): Exceptionally large/wide margins or near perfect centering.

Very Fine (70-85): Normal-size margins for the issue and well-centered with the design a bit closer to one side. “Very Fine and choice” applies to stamps that have desirable traits such as rich color, sharp impression, freshness or clarity of cancel.

Fine (60-70): Smaller than usual margins or noticeably off center. Pre-1890 issues may have the design touched in places.

Very Good (below 60): Attractive appearance, but margins or perforations cut into the design.

Guide to Gum Condition

Gum Categories:	MINT N.H.	ORIGINAL GUM (O.G.)				NO GUM
	 Mint Never Hinged <i>Free from any disturbance</i>	 Lightly Hinged <i>Faint impression of a removed hinge over a small area</i>	 Hinge Mark or Remnant <i>Prominent hinged spot with part or all of the hinge remaining</i>	 Part o.g. <i>Approximately half or more of the gum intact</i>	 Small part o.g. <i>Approximately less than half of the gum intact</i>	 No gum <i>Only if issued with gum</i>
Catalogue Symbol:	★ ★	★	★	★	★	(★)
PRE-1890 ISSUES	<i>Pre-1890 stamps in these categories trade at a premium over Scott value</i>			Scott Value for “O.G.”		Scott “No Gum” Values thru No. 218
1890-1935 ISSUES	Scott “Never Hinged” Values for Nos. 219-771	Scott Value for “O.G.” (Actual value will be affected by the degree of hinging)		Disturbed Original Gum: Gum showing noticeable effects of humidity, climate or hinging over more than half of the gum. The significance of gum disturbance in valuing a stamp in any of the Original Gum categories depends on the degree of disturbance, the rarity and normal gum condition of the issue and other variables affecting quality. For example, stamps issued in tropical climates are expected to have some		
1935 TO DATE	Scott Value for “Unused”					

Covers

Minor nicks, short edge tears, flap tears and slight reduction at one side are normal conditions for 19th century envelopes. Folded letters should be expected to have at least one file fold. Light cleaning of covers and small mends along the edges are accepted forms of conservation. Unusual covers may have a common stamp with a slight crease or tiny tear. **These flaws exist in virtually all 19th century covers and are not always described. They are not grounds for return.**

Catalogue Values and Estimates

Unless otherwise noted, the currently available *Scott Catalogue* values are quoted in dollars with a decimal point. Other catalogues are often used for foreign countries or specialized areas and are referred to by their common name: *Stanley Gibbons* (SG), *Dietz*, *American Air Mail Catalogue* (AAMC), *Michel*, *Zumstein*, *Facit*, etc. Estimates are indicated with an “E.” and reflect our conservative valuation in dollars. Reserves will never exceed the low end of the estimate range; they will sometimes exceed Scott Catalogue value for stamps in Extremely Fine condition.

Because of certain pricing inconsistencies in the *Scott Catalogue*—for example, blocks that have no gum, the absence of premiums for Mint N.H. items, etc.—we cannot guarantee the accuracy of values quoted for multiples, specialized items and collection lots. We generally try to be conservative, but buyers may not return a lot because of a discrepancy in catalogue value due to Scott pricing inconsistencies.

Symbols and Abbreviations (see chart above for gum symbols)

⊞	Block	E	Essay	pmk.	Postmark	No.	Scott Catalogue Number
⊞	Cover	P	Proof	cds	Circular Datestamp	hs	Handstamp
FC	Fancy Cancel	TC	Trial Color Proof	var.	Variety	ms.	Manuscript

R@ siegelauctions.com

CATALOGUES AND PRICES REALIZED

Images and descriptions for all sales going back to 1992, our Rarities sales from 1964 and selected older name sales. PDF catalogues go back to our first sale in 1931.



POWER SEARCH™

Search by Scott number or keyword through all of the sales at our website. The best resource in philately for research.

MY SIEGEL™

Save your Power Searches as want lists. We will automatically notify you when a match is included in an upcoming sale, whether it's as broad as any Columbian issue, or as narrow as a 241 graded 98. The most powerful want list in philately.

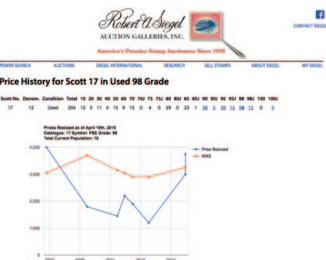


LOT TRACKER™

Never miss another lot because you were away from your computer. Log into My Siegel™, then set up notifications to get texts and/or emails 10-30 lots before yours comes up (live bidding is still through Stamp Auction Network).

CENSUS DATA FOR RARITIES

The up-to-date census data for U.S. and select International rarities are a valuable resource for buyers, sellers and researchers. Every recorded example of almost 150 different rare stamps is described and, in most cases, photographed.



GRADED PRICE HISTORY

Graphs show the realizations of each grade over time in our auctions. The data points are easily visible for independent analysis.

We have several other important features of our website, such as the Siegel Encyclopedia, Exhibits, Today in History and a Perpetual Calendar. Go to siegelauctions.com for the most comprehensive website in philately.



MORNING SESSION (LOTS 1001-1059)
TUESDAY, DECEMBER 6, 2022 AT 10:30 A.M.

THE ALAN COLLECTION OF BRITISH NORTH AMERICA

CANADA



1001

1001 (★) **1851, 3p Orange Vermilion, Laid Paper (1a; SG 1a).** Unused (no gum), large margins all around, bright shade, couple small black spots (one of which was “removed” according to accompanying certificate), minute sealed tear at bottom left which is barely perceptible

EXTREMELY FINE APPEARING UNUSED EXAMPLE OF THE 1851 3-PENCE BEAVER ON LAID PAPER. ONE OF THE RAREST REGULARLY ISSUED CANADA STAMPS TO FIND IN UNUSED CONDITION WITH NO MORE THAN 20 THOUGHT TO EXIST.

The first Pence Issues of Canada were printed by the New York firm of Rawdon, Wright, Hatch & Edson, the same firm that printed the New York Postmaster’s Provisional and United States 5c and 10c 1847 Issue. The Pence issues show the same fine quality of engraving that distinguishes the U.S. 1847 Issue. The stamps were printed early in 1851 (3p issued April 23), at the same time that RWH&E’s contract for providing United States stamps was coming to an end. The 3p design was executed by Sandford Fleming and engraved by Alfred Jones.

Of interesting note, despite the popularity of the 12p Black, the 3p Red is far rarer in unused condition with no more than 20 unused believed to exist. Of those, nearly all have tight to touching margins and/or plagued with a myriad of faults. Our census, available on our website at <https://siegelauctions.com/census/canada/scott/1>, records a total of seventeen examples which includes one pair and one block of four, four of which are certified in this Orange Vermilion shade. Of those, twelve are without gum (including a block of four).

Census no. 1-UNC-08. Ex “Montclair”. With 2014 Greene Foundation certificate. Scott \$35,000.00. SG £38,000. Unitrade C\$60,000.00 E. 7,500-10,000



1002

1851 6-PENCE VIOLET ON LAID PAPER
THE FINEST ORIGINAL-GUM EXAMPLE IN EXISTENCE

- 1002 ★ **1851, 6p Slate Violet, Laid Paper (2; SG 2).** Large part original gum, four large to ample margins including a part of **sheet margin at right**, rich color and outstanding proof-like impression on bright fresh paper which displays the distinctive laid lines exceptionally well, just the slightest trace of an inconsequential paper indentation at center

EXTREMELY FINE. A MAGNIFICENT ORIGINAL-GUM EXAMPLE OF THE 1851 6-PENCE ON LAID PAPER. LIKELY THE FINEST ORIGINAL-GUM EXAMPLE IN EXISTENCE.

The 1851 6p Prince Albert issue on laid paper is one of Canada's rarest and most difficult stamps to obtain in unused condition. Very few unused examples exist, and even fewer have any portion of original gum. Completely sound unused examples are of even greater rarity. In fact, a thorough review of past famous name sales of important Canadian stamps reveals no other example that competes with this remarkable stamp. Our census, available on our website at <https://siegelauctions.com/census/canada/scott/2>, records only one other original gum single and a pair, both of which have faults.

Ex Chapin and Gross. With 1977 and 2009 P.F. certificates (only the latter mentions tiny paper indentation) and clear 2011 Greene Foundation certificate. Scott \$40,000.00. SG £50,000. Unitrade C\$120,000.00..... E. 30,000-40,000



1003

1851 12-PENCE BLACK ON LAID PAPER
A GEM ORIGINAL-GUM EXAMPLE OF THIS ICONIC WORLD RARITY

- 1003 ★ **1851, 12p Black, Laid Paper (3; SG 4).** Full original gum, lightly hinged with just a trace of hinging at top, large to full margins all each side, intense shade, exceptionally detailed impression on crisp paper

EXTREMELY FINE. A PHENOMENAL ORIGINAL-GUM EXAMPLE OF THE CELEBRATED 1851 12-PENCE BLACK ON LAID PAPER. ONE OF THE MOST DESIRABLE AND ICONIC STAMPS OF BRITISH NORTH AMERICA AND THE ENTIRE WORLD. THIS GEM HAS ORIGINAL GUM, LARGE MARGINS, AND POSSESSES AN EXCEPTIONAL OVERALL FRESHNESS — EASILY RANKING AS ONE OF THE FINEST EXAMPLES IN EXISTENCE AND WITH IMPRESSIVE PROVENANCE.

The first Pence Issues of Canada were printed by the New York firm of Rawdon, Wright, Hatch & Edson, the same firm that printed the New York Postmaster's Provisional and United States 5c and 10c 1847 Issue. The Pence issues, and particularly the 12-pence, show the same fine quality of engraving that distinguishes the U.S. 1847 Issue. The original die was engraved by Alfred Jones and is based upon the Chalon portrait, which was also used on the stamps of Queensland, Tasmania, Bahamas and New Zealand, among other British colonies. The stamps were printed early in 1851 (12p issued June 14), at the same time that RWH&E's contract for providing United States stamps was coming to an end.

A total of 50,000 stamps were printed from 250 sheets of 200 subjects (two panes of 100). Only 1,450 were sold with the balance being destroyed. Our census, available on our website at <https://siegelauctions.com/census/canada/scott/3>, records a total of seventeen original gum singles plus four pairs.

Census no. 3-OG-11. Ex Ferrary, Dale-Lichtenstein, "Foxbridge", Weill Brothers Stock, and Cantor. With 1989 Holcombe (stating "*One of the finest copies in existence.*") and 1998 Greene Foundation certificates. Scott \$175,000.00. SG £200,000. Unitrade C\$300,000.00
 E. 150,000-200,000



1004

- 1004 ★ **1852, 3p Red, Wove Paper (4; SG 5).** Original gum with slight disturbance from prior hinge, large to full margins all around, rich color and strong impression, Very Fine, scarce in this condition, signed Senf, Scott \$1,500.00, SG £2,750, Unitrade C\$4,000.00 E. 500-750



1005

- 1005 (★) **1855, 6p Greenish Gray, Wove Paper (5b; SG 10).** Unused (no gum), huge side margins, large at top and bottom, fresh color and bold impression, accompanying certificate notes tiny tear in bottom margin which does not touch design

VERY FINE APPEARING UNUSED EXAMPLE OF THE 6-PENCE ON WOVE PAPER IN THE GREENISH GRAY SHADE. LESS THAN A DOZEN UNUSED COPIES ARE THOUGHT TO EXIST, LIKELY FAR FEWER.

Of the unused examples we have been able to locate in major named sales, nearly all have either faults to varying degrees and/or margins touching the design.

Ex Balner. With 2011 Greene Foundation certificate. Scott \$23,000.00. SG £45,000. Unitrade C\$40,000.00 E. 5,000-7,500

- 1006 (★) **1855, 10p Blue, Thick Wove Paper (7a; SG 20).** Unused (no gum), large even margins on each side, deep rich color with a highly detailed impression on fresh paper

VERY FINE AND CHOICE. A RARE AND PRISTINE UNUSED EXAMPLE OF THE 1857 10-PENCE CARTIER ON THICK PAPER.

Signed Bloch. With 1994 P.F. certificate. Scott \$10,000.00. SG £16,000. Unitrade C\$14,000.00.....
..... E. 4,000-5,000



1006



1007

- 1007 ★ **1857, ½p Rose (8; SG 17).** Original gum, lightly hinged, mostly large margins to ample at bottom, lovely fresh color on bright paper, minor corner bend, still Very Fine, with 2016 Greene Foundation certificate, Scott \$1,500.00, SG £1,000, Unitrade C\$2,800.00..... E. 400-500

- 1008 (★) **1857, 7½p Green (9; SG 12).** Unused (no gum), large to full margins, strong color and detailed impression

VERY FINE. A CHOICE UNUSED EXAMPLE OF THE 1857 7½-PENCE GREEN VICTORIA.

With 2008 Greene Foundation certificate. Scott \$7,000.00. SG £15,000. Unitrade C\$12,000.00
..... E. 3,000-4,000



1008



1009

1009 (★) **1857, 6p Reddish Purple, Very Thick Soft Wove (10; SG 23).** Unused (no gum), large margins all around, uncommonly fresh, with rich color and a fine impression, minute surface scrape at top that is barely perceptible and almost unworthy of mention

VERY FINE. A DESIRABLE EXAMPLE OF THIS IMMENSELY RARE UNUSED STAMP.

It is believed less than twelve unused exist in private hands. Virtually all are no gum and most have faults to some degree. This is among the finest available of the small number of known unused examples.

Ex "Fordwater". With 2011 Greene Foundation certificate. Scott \$22,500.00. SG £48,000. Unitrade C\$40,000.00..... E. 10,000-15,000

- 1010 ★ **1858, ½p Rose, Perf 12 (11; SG 25).** Slightly disturbed original gum (from prior hinging), well-centered for this issue which is often found with perfs well into design, bright shade on fresh paper

VERY FINE. A RARE ORIGINAL GUM EXAMPLE OF THE 1858 HALF-PENNY ROSE OF THE FIRST PERFORATED ISSUE.

With 2016 Greene Foundation certificate. Scott \$4,250.00. SG £4,750. Unitrade C\$15,000.00 E. 2,000-3,000



1010



1011

- 1011 **1858, 3p Red, Perf 12 (12; SG 26).** Bold color, neatly struck **blue** target cancel, well-centered, negligible bottom right corner perf crease, otherwise Very Fine, with 2012 P.F. certificate, Scott \$1,400.00, SG £500, Unitrade C\$1,600.00 E. 300-400



1012

- 1012 ★ **1859, 6p Brown Violet (13; SG 27).** Original gum which most recent certificate notes as “somewhat disturbed” which is quite minor, fresh color with a bold impression on bright paper, relatively well-centered for this tightly spaced issue

FINE. A RARE ORIGINAL-GUM EXAMPLE OF THE 1859 6-PENCE PRINCE ALBERT FROM CANADA'S FIRST PERFORATED ISSUE. ONE OF THE MOST CHALLENGING CANADIAN STAMPS TO FIND WELL-CENTERED.

The first perforated series of Canada invariably comes with perforations touching on at least one side due to the very narrow spacing between stamps. The values given in Scott take this into account with the footnote stating “values are for examples with perfs touching the design”. Those possessing original gum are extremely rare, evidenced by Unitrade valuing those with gum at a 150% premium.

With 1975 B.P.A. and 2014 Greene Foundation certificates. Scott \$25,000.00. SG £18,000. Unitrade C\$37,500.00 E. 7,500-10,000



1013



1014



1015

- 1013 **1859, 10c Chocolate Brown (Unitrade 16i; SG 33).** Target cancel expertly removed and regummed, well-centered, strong impression, Very Fine appearance, with 1986 Rendon (as unused) and 2022 Greene Foundation certificates, catalogued as used, Scott \$6,000.00, SG £2,500, Unitrade C\$9,000.00 E. 1,000-1,500
- 1014 (★) **1868, 1c Brown Red (22; SG 55).** Unused (no gum), wide margins, excellent centering, bold color, Extremely Fine, ex Pope, with 2003 Greene Foundation certificate, Scott \$550.00, SG £550, Unitrade C\$1,000.00 E. 300-400
- 1015 (★) **1869, 1c Yellow Orange (23; SG 56a).** Unused (no gum), bright and fresh shade, Fine, Scott \$1,400.00, SG £1,100, Unitrade C\$800.00 E. 200-300



1016



1017



1018



1019

- 1016 ★ **1875, 5c Olive Green (26; SG 63).** Original gum, h.r.'s, rich color, Fine, Scott \$2,000.00, SG £850, Unitrade C\$1,600.00 E. 400-500
- 1017 ★ **1868, 12½c Blue (28; SG 60).** Original gum which accompanying certificate states is "disturbed and partially removed" which is just prior hinging and slightly glazed, precise centering with wide margins, deep rich color on bright paper, Extremely Fine, with 2014 Greene Foundation certificate, Scott \$1,200.00, SG £950, Unitrade C\$2,800.00 E. 400-500
- 1018 (★) **1877, 10c Dull Rose Lilac (40; SG 89).** Unused (no gum), impressive centering with extra-large margins, fresh color, Extremely Fine, catalogued as with original gum, Scott \$1,600.00, SG £1,700.00 E. 300-400
- 1019 ★ **1893, 20c Vermilion (46; SG 115).** Original gum, lightly hinged, precise centering with wide and balanced margins, Extremely Fine, ex "Calgary", with 2005 Greene Foundation certificate, Scott \$400.00, SG £250, Unitrade C\$600.00 E. 200-300



1020



1021

- 1020 ★ **1897, \$2.00 Jubilee (62).** Original gum, lightly hinged, wide margins, gorgeous rich color on fresh paper, Very Fine, Scott \$1,300.00, Unitrade C\$2,000.00..... E. 500-750
- 1021 ★ **1897, \$3.00 Jubilee (63).** Original gum, lightly hinged, well-centered with wide margins, deep color, Very Fine, Scott \$1,300.00, Unitrade C\$2,000.00..... E. 500-750



1022



1023

- 1022 ★ **1897, \$4.00 Jubilee (64).** Original gum, lightly hinged, excellent centering, minute corner perf bend, still Very Fine, Scott \$1,300.00, Unitrade C\$2,000.00 E. 300-400
- 1023 ★★ **1903, 1c Green (89).** Mint N.H., perfectly centered with Jumbo margins, wonderfully bright and fresh, Extremely Fine Gem, with 2019 P.S.E. certificate (Superb 98 Jumbo; SMQ does not price higher than 95), Scott \$115.00, Unitrade C\$245.00 E. 200-300



1024



1025

- 1024 ★★ **1912, 5c Dark Blue (111).** Mint N.H., absolutely flawless centering with Jumbo margins, deep luxuriant color on bright paper, Extremely Fine Gem, a remarkable example which would be challenging to find many equals, Scott \$450.00, Unitrade C\$900.00 E. 500-750
- 1025 ★★ **1912, 10c Deep Brown Purple (116).** Mint N.H., excellent centering with wide margins, wonderfully rich color on bright paper, Extremely Fine, Scott \$700.00, Unitrade C\$1,200.00 E. 400-500

BRITISH COLUMBIA AND VANCOUVER ISLAND

1860 2½-PENCE DULL ROSE IMPERFORATE
AN EXCEPTIONAL QUALITY UNUSED EXAMPLE OF THIS RARITY



1026

- 1026 ★ **1860, 2½p Dull Rose, Imperforate (1; SG formerly 1).** Contemporaneous gum, large to very large margins all around

EXTREMELY FINE. A MOST IMPRESSIVE EXAMPLE OF THIS GREAT RARITY AND THE FIRST JOINT ISSUE BETWEEN BRITISH COLUMBIA & VANCOUVER ISLAND.

This stamp was printed but never placed into use. While listed in Scott and Unitrade, Stanley Gibbons considers this an imperforate plate proof. Some current research suggests all of these were produced without gum and privately gummed at a later time despite the two issued certificates stating original gum.

Ex "World Traveler". With 1983 Friedl and 1994 P.F. certificates (both stating original gum). Scott \$27,500.00. SG £10,000. Unitrade C\$60,000.00 E. 10,000-15,000

- 1027 (★) **1865, 5c Rose (3; SG 11).** Unused (regummed), large margins all around, fresh color and crisp impression, central vertical crease, slight margin repair (not mentioned on certificate)

VERY FINE APPEARANCE. A RARE UNUSED EXAMPLE OF THE 5-CENT ROSE IMPERFORATE.

Arguably one of the most challenging Canadian province stamps to obtain in unused condition. Unused examples are seldom encountered, with most known having faults to some degree (some quite extensive and/or repaired). We have offered only one other — in our 1981 Rarities Sale.

With 2016 Greene certificate. Scott \$40,000.00. SG £32,000. Unitrade C\$50,000.00 E. 5,000-7,500



1027



1028

- 1028 (★) **1865, 10c Blue (4; SG 12).** Unused (no gum), large to full margins on all four sides, deep blue shade and sharp impression, Very Fine and choice, a scarce stamp in unused condition, with 2022 Greene Foundation certificate, Scott \$3,500.00, SG £3,500, Unitrade C\$3,000.00 E. 1,000-1,500

- 1029 ★ **1867, 10c on 3p Lilac Rose, Perf 14 (10; SG 30).** Original gum, h.r., uncommonly strong shade on bright paper, Fine and scarce in sound original gum condition, Scott \$2,400.00, SG £1,400, Unitrade C\$3,600.00 E. 750-1,000



1029



1030



1031



1032

- 1030 ★ **1867-69, 50c on 3p Violet, Perforated 14 (12; SG 32).** Original gum, h.r.'s, bright shade, Fine, Scott \$900.00, SG £1,000, Unitrade C\$1,800.00 E. 300-400
- 1031 (★) **1869, 5c on 3p Bright Red, Perf 12½ (14; SG 23).** Unused (no gum), well-centered for this tightly spaced issued, fresh color, Very Fine, Scott \$2,250.00, SG £2,250, Unitrade C\$2,000.00 E. 500-750
- 1032 ★ **1869, 10c on 3p Lilac Rose, Perf 12½ (15; SG 24).** Original gum, h.r., impressively well-centered which is rarely encountered on this issue, intensely rich color, Very Fine and choice, a superb example of this scarce stamp, with 2015 Greene Foundation certificate, Scott \$1,300.00, SG £1,500, Unitrade C\$2,500.00 E. 500-750



1033



1034



1035

- 1033 ★ **1867-69, 25c on 3p Orange, Perf. 12½ (16; SG 25).** Original gum, small h.r., vibrant color on bright paper, excellent centering, Very Fine and choice, signed Champion, Scott \$1,100.00, SG £850, Unitrade C\$1,600.00 E. 500-750
- 1034 ★ **1867-69, 50c on 3p Violet, Perf. 12½ (17; SG 26).** Original gum, lightly hinged, lovely rich color on bright paper, well-centered, Very Fine, signed A. Brun and Holcombe, Scott \$1,600.00, SG £1,400, Unitrade C\$2,400.00 E. 500-750
- 1035 ★ **1867-69, \$1.00 on 3p Green, Perf. 12½ (18; SG 27).** Original gum, minor h.r., exceptionally well-centered with uncommonly wide margins, bold color on bright paper, Extremely Fine, easily of the finest examples we have encountered combining fresh color and perfs clear of the design on each side, ex "Fordwater", with 2013 Greene Foundation certificate, Scott \$2,000.00, SG £1,800, Unitrade C\$3,600.00 E. 1,000-1,500

NEW BRUNSWICK

- 1036 (★) **1851, 3p Red (1; SG 1).** Unused (no gum), full to ample margins except barely touching at left, clear impression, couple small thin specks, Very Fine appearance, with 2013 Greene Foundation certificate, Scott \$5,500.00, SG £4,000, Unitrade C\$5,000.00 E. 750-1,000



1036



1037

- 1037 (★) **1851, 6p Olive Yellow (2; SG 4).** Unused (no gum), large to ample margins all around, vibrant shade on deeply blued paper

VERY FINE. A SCARCE UNUSED EXAMPLE OF THE 1851 SIX-PENCE OLIVE YELLOW.

With 1996 Greene Foundation certificate. Scott \$7,500.00. SG £5,000. Unitrade C\$7,500.00 E. 1,500-2,000

- 1038 **1851, 1sh Bright Red Violet (3; SG 5).** Large to full margins on each side, gorgeous rich color, razor-sharp impression on fresh paper, barely perceptible cancel, thin from hinge removal along "Brunswick", Extremely Fine appearance, a beautiful appearing example, with 1966 R.P.S. certificate, Scott \$6,250.00, SG £4,500, Unitrade C\$8,000.00..... E. 1,000-1,500



1038

1851 ONE-SHILLING DULL VIOLET
A HANDSOME UNUSED EXAMPLE WITH IMPECCABLE PROVENANCE



1039

- 1039 ★ **1851, 1sh Dull Violet (4; SG 6).** Unused (no gum), large margins nearly all around, incredibly fresh overall, with deep luxuriant color and a sharp impression, just the slightest trace of hinge thin spot

EXTREMELY FINE APPEARING 1851 ONE-SHILLING IN THE DULL VIOLET SHADE. AN ESPECIALLY HANDSOME UNUSED EXAMPLE OF THIS CLASSIC RARITY.

Ex Dale-Lichtenstein, Koh and Gross. With 2010 Greene Foundation certificate. Scott \$40,000.00. SG £32,000. Unitrade C\$40,000.00 E. 7,500-10,000

NEWFOUNDLAND



1040

- 1040 ★ **1857, 2p Scarlet Vermilion (2; SG 2).** Original gum, h.r., narrow but clear margins at left and bottom, just touching outer frameline at top and right, deep rich shade and a highly detailed impression, mild horizontal crease

FINE APPEARANCE. A RARE AND DESIRABLE ORIGINAL-GUM EXAMPLE OF THE 1857 2-PENCE SCARLET VERMILION.

Our census, available at our website at <https://siegelauctions.com/census/newfoundland/scott/2>, records seventeen unused, five with original gum and twelve without.

Census no. 2-OG-05. Ex Markowitz. Signed A. Brun. With 1959 R.P.S. and 2002 Sismondo certificates. Scott \$17,500.00. SG £25,000. Unitrade C\$25,000.00 E. 2,000-3,000



1041



1042

- 1041 **1857, 4p Scarlet Vermilion (4; SG 4).** Three large margins, tight but clear at left, fresh color and strong impression, neat grid cancel, Very Fine, with 2014 P.S.A.G. certificate, Scott \$4,250.00, SG £3,500, Unitrade C\$7,000.00 E. 1,000-1,500

- 1042 **1857, 6p Scarlet Vermilion (6; SG 6).** Uncommonly large margins all around, strong impression, centrally struck grid cancel, small filled thin at top, Extremely Fine appearance, ex Carey Fox, with 2011 P.F. certificate, Scott \$5,000.00, SG £4,750, Unitrade C\$7,000.00 E. 1,000-1,500



1043

- 1043 ★ **1857, 6½p Scarlet Vermilion (7; SG 7).** Original gum, paper h.r., full margins on all four sides, bold color and strong impression on fresh paper

VERY FINE. A RARE ORIGINAL-GUM EXAMPLE OF THE 6-PENCE HALF-PENNY SCARLET VERMILION.

The 6½p is notorious for tight and/or touching margins and is generally found without gum and faults to varying degrees. This is one of those rare exceptions. The last original gum example we have offered in our auctions was over 20 years ago.

With 1995 B.P.A. certificate. Scott \$5,000.00. SG £4,500. Unitrade C\$12,000.00..... E. 1,500-2,000

- 1044 ★ **1857, 1sh Scarlet Vermilion (9; SG 9).** Small part original gum harshly noted on accompanying certificate as it covers a majority of the stamp, tight margins as usual, ample at right, just clear at left and bottom, and cut into outer frameline at top, rich color and bold impression

FINE. A DESIRABLE ORIGINAL-GUM EXAMPLE OF THE 1857 ONE-SHILLING SCARLET VERMILION. A MAJOR NEWFOUNDLAND RARITY MISSING FROM MOST COLLECTIONS.

Our census, available at our website at <https://siegel-auctions.com/census/newfoundland/scott/9>, records 29 unused, ten with original gum. Of those with gum, only five are in sound condition.

Census no. 9-OG-05. With 2006 Sismondo certificate. Scott \$42,500.00. SG £27,000. Unitrade C\$80,000.00 E. 5,000-7,500



1044



1045

- 1045 ★ **1860, 4p Orange (12; SG 12).** Original gum, lightly hinged, enormous margins all around, brilliantly fresh color with a highly detailed impression

EXTREMELY FINE GEM. A SUPERB EXAMPLE OF THE 1860 4-PENCE ORANGE. EASILY ONE OF THE FINEST ORIGINAL-GUM COPIES WE HAVE ENCOUNTERED.

With 1978 Friedl, 1985 E. Diena, and 2008 A.P.S. certificates. Scott \$5,500.00. SG £4,500. Unitrade C\$8,000.00..... E. 3,000-4,000

- 1046 (★) **1860, 6p Orange (13; SG 14).** Unused (no gum), huge balanced margins, vibrant shade, strong impression on bright paper

EXTREMELY FINE. A HUGE-MARGINED UNUSED EXAMPLE OF THE 1860 6-PENCE ORANGE, SCOTT NO. 13.

With 1978 Friedl and 2003 P.F. certificates. Scott \$5,250.00. SG £5,500. Unitrade C\$5,000.00.....
..... E. 2,000-3,000



1046



1047

- 1047 (★) **1860, 1sh Orange, Handmade Paper without Mesh (15; SG 15).** Unused (no gum), margins tight but clear except just barely touching at right, bright color and sharp impression

FINE. AN EXCEPTIONALLY RARE SOUND UNUSED EXAMPLE OF THE 1860 ONE-SHILLING ORANGE WHICH IS NOTORIOUS FOR TIGHT TO TOUCHING MARGINS.

Our census, available at our website at <https://siegel-auctions.com/census/newfoundland/scott/15>, records 13 unused plus only one example with original gum. Of those without gum, only seven are sound (or presumed to be as a few haven't been seen in decades).

Census no. 15-UNC-12. With 2003 Greene Foundation certificate. Scott \$37,500.00. SG £35,000. Unitrade C\$40,000.00 E. 5,000-7,500

- 1048 ★★ **1887, 10c Black (59; SG 54).** Mint N.H., well-centered with wide margins, rich shade, Extremely Fine and choice, Scott \$300.00, SG £120, Unitrade C\$600.00..... E. 300-400



1048

NOVA SCOTIA



1049

- 1049 ★ **1853, 1p Red Brown (1; SG 1).** Part original gum, large margins all around, deep rich color, bold impression on fresh blued paper, Extremely Fine, a choice original gum example of this Nova Scotia classic, with 1994 P.S.E. certificate, Scott \$2,000.00, SG £3,000, Unitrade C\$6,000.00..... E. 1,000-1,500

- 1050 ★ **1851, 3p Bright Blue (2; SG 3).** Slightly disturbed original gum, multiple h.r.'s, large to full margins, strong color with a sharp impression on fresh paper, Very Fine, a seldom encountered original gum example with full margins, Scott \$1,750.00, SG £1,100, Unitrade C\$3,200.00..... E. 500-750



1050



1051

- 1051 ★ **1851, 3p Dark Blue (3; SG 2).** Original gum, small h.r., large to full margins all around, strong rich color with an intense impression on lightly blued paper, Extremely Fine, a handsome original gum example in superb condition, with 2014 Greene Foundation certificate, Scott \$2,250.00, SG £1,300, Unitrade C\$4,400.00..... E. 1,000-1,500



1052

- 1052 ★ **1851, 6p Yellow Green (4; SG 5).** Original gum, large even margins, exceptionally rich color with a sharp impression

EXTREMELY FINE. A SUPERB ORIGINAL-GUM EXAMPLE OF THE 1851 6-PENCE IN THE YELLOW GREEN SHADE, SCOTT NO. 4. RARE IN THIS STUNNING QUALITY.

Most examples we have encountered have part or traces of original gum, or no gum at all. Finding one with full original gum in this high level of quality is notably rare.

With 2022 Greene Foundation certificate. Scott \$5,000.00. SG £4,750. Unitrade C\$15,000.00..... E. 3,000-4,000



1053

- 1053 ★ **1857, 6p Dark Green (5; SG 6).** Original gum, relatively lightly hinged, large to full margins on each side, intensely rich color with a razor-sharp impression, small thin spot

VERY FINE APPEARANCE. A RARE ORIGINAL-GUM EXAMPLE OF THE 1857 6-PENCE IN THE DARK GREEN SHADE.

Ex Caspary. With 1968 R.P.S. certificate. Scott \$10,000.00. SG £10,000. Unitrade C\$25,000.00..... E. 2,000-3,000

1857 ONE-SHILLING REDDISH PURPLE
ONE OF THE FINEST ORIGINAL-GUM EXAMPLES EXTANT



1054

- 1054 ★ **1857, 1sh Reddish Purple (6; SG 8).** Original gum, lightly hinged, impressively large margins on each side, stunning color with a razor-sharp impression on fresh paper, truly insignificant and minor corner crease

STILL EXTREMELY FINE. THIS IS EASILY ONE OF THE FINEST ORIGINAL-GUM EXAMPLES OF THE 1857 ONE-SHILLING IN THE REDDISH PURPLE SHADE. THE ONE-SHILLING HERALDIC IS ONE OF THE MOST DIFFICULT STAMPS TO ACQUIRE IN THIS CONDITION WITH ORIGINAL-GUM.

This stamp, with large margins and original gum, is missing from even the most advanced collections. We are aware of only a small handful of comparable examples of either the Reddish Purple (Scott 6) or Deep Purple (Scott 6b) shades. According to our Power Search, we have only offered one other original gum example, a Scott No. 6b, in our "Scarsdale" sale (Sale 1243, Lot 767).

Ex Ferrary, Lichtenstein, and Meyer. Signed Bloch. With 2004 B.P.A. and 2016 B.P.B. certificates. Scott \$22,500.00. SG £18,000. Unitrade C\$60,000.00 E. 10,000-15,000

1851 ONE-SHILLING COLD VIOLET
AN EXTREMELY RARE UNUSED EXAMPLE OF THIS CLASSIC STAMP



1055

1055 (★) **1851, 1sh Cold Violet (7; SG 7).** Unused (no gum), large to ample margins all around, fresh color in this distinctive shade, wonderfully sharp impression

VERY FINE UNUSED EXAMPLE OF THE NOVA SCOTIA 1851 ONE-SHILLING IN THE COLD VIOLET SHADE. LESS THAN A DOZEN ARE THOUGHT TO EXIST, MAKING IT ONE OF THE KEY RARITIES OF THE PROVINCE.

According to Power Search, we have only offered three in our auctions dating back to 1996, all of which are without gum.

Ex Argenti, Carey Fox, and Kanai. With 1956 R.P.S. and 1990 Holcombe certificates.
Scott \$25,000.00. SG £25,000. Unitrade C\$35,000.00 E. 7,500-10,000

PRINCE EDWARD ISLAND



1056

- 1056 ★ **1861, 2p Dull Rose (1; SG 1).** Original gum, h.r., uncommonly well-centered with wide particularly wide margins, rich color on bright paper, Very Fine and scarce in this condition, signed A. Diena, with 2015 Greene Foundation certificate, Scott \$1,100.00, SG £600, Unitrade C\$2,000.00 E. 500-750

- 1057 ★ **1861, 3p Blue (2; SG 3).** Original gum, lightly hinged, bold color, reperfed at left and bottom, Very Fine appearance, with 2013 Sismondo certificate, Scott \$2,250.00, SG £1,100, Unitrade C\$4,000.00..... E. 300-400



1057



1058

- 1058 (★) **1861, 6p Yellow Green (3; SG 4).** Unused (regummed), well-centered for this notoriously poorly centered issue, deep rich color and a sharp impression, Very Fine, with 1972 A.P.S. (as original gum) and 2022 Greene Foundation certificates, Scott \$2,750.00, SG £1,700, Unitrade C\$2,750.00..... E. 500-750

- 1059 ★ **The "Alan" Collection Balance of British North America.** Housed in an album covering both Canadian Provinces and Canada, predominately unused, Provinces with few better British Columbia & Vancouver Islands including No. 13 (thin), strength in Newfoundland with some better Pence and early Cents Issues, scattered 20th century and some Air Post, Canada from 1859 Cents Issue onwards, decent Large Queens including 1c and 3c on Laid Paper (small faults, 1c manuscript cancel), Small Queens, Maple Leafs and Numerals complete, Jubilee with \$1.00 and \$5.00, King Edward VII onwards mostly complete to early 1940s including better Admirals in Gem condition, some Back-of-Book with useful Air Posts and Special Delivery, plus a small group of items remaining on dealer stock cards, overall condition slightly mixed on earlier issues with some unused (no gum) noticed, although mixed within are some Gem quality items, eleven certificates accompany, mostly Fine-Very Fine*Not illustrated* E. 5,000-7,500

END OF SALE — THANK YOU



BIDS

Use this form to submit absentee bids
or to confirm telephone bids

Sale 1269

December 6, 2022

PADDLE #

1

Please provide the following information:

NAME

ADDRESS

CITY/STATE/ZIP

PHONE MOBILE

EMAIL

2

Have you purchased from us in the past 5 years? ☐ Yes (please go to Section 3)
☐ No (references required below)

STAMP FIRM PHONE

STAMP FIRM PHONE

Please submit references at least **2 business days** before the sale. Bids from new clients will not be executed if satisfactory references are not received in time to be contacted.

3

- Enter the lot number and your corresponding maximum bid in the space below
- Use whole dollar amounts and bid according to the increments (see back of form)
- Bids do not include the **18% Buyer's Premium**, taxes, duty or shipping charges
- Absentee bids will advance at one increment over the next highest competing bid
- "Plus", "Break Tie" or "Buy" bids will not be executed
- Indicate any "Or" bids between lot number/bid entries and bracket your choices
- If you wish to limit the total amount of your bids, follow the instructions below

Lot #	Bid \$	Lot #	Bid \$	Lot #	Bid \$

☐ **Limit Bids:** Check this box if you wish to limit the total hammer price of your bids (excluding 18% Buyer's Premium, taxes, duty and shipping costs). Your bids will be executed until your bidding limit has been reached. The total amount you wish to bid is \$

4

By signing this form, you agree to all of the Conditions of Sale printed in the sale catalogue (printed and digital), including but not limited to a) payment in the manner demanded by the Siegel firm, and b) payment of the 18% Buyer's Premium, any sales tax or customs duty, shipping costs, late charges and

other prescribed charges. You agree that your bids will be executed as a courtesy by Siegel, but you waive the right to make any claim against Siegel or its employees arising from these bids or your participation in the sale. You agree to honor all bids as submitted, regardless of any errors or omissions.

SIGNED DATE

Mail the signed form to Siegel Bid Department, 21 West 38th St., 7th Floor, New York, NY 10018
or email to stamps@siegelauctions.com



Additional Bids

Sale 1269

December 6, 2022

PADDLE #

Lot #	Bid \$	Lot #	Bid \$	Lot #	Bid \$

Shipping & Insurance

We will be pleased to arrange for shipping and transit insurance for purchases in this sale, except for lots marked or announced as "floor sale only." To expedite billing and delivery to hundreds of buyers in each sale, we use standard charges for postage and insurance under our policy. These charges are based on the package weight and mailing requirements, according to the schedule shown here. Our standard charges do not include a fee for our services, and they may be slightly more or less than the actual postage or Fedex fee. We ask all buyers to remit the invoiced amount for shipping and insurance.

Transit insurance is provided in all cases, except when the buyer has furnished us with documentation that insurance is effective under the buyer's own policy.

There will be no added insurance charge for shipments of less than \$75,000 value. Shipments valued in excess of \$75,000 may require supplemental insurance and/or special courier service, the estimated cost of which will be furnished to the buyer prior to shipment. If the buyer refuses to pay the estimated charges or furnish proof of self-insured coverage, the buyer will be responsible for picking up the lots at our office and any resulting sales tax.

Bidding Increments

The auctioneer may regulate the bidding at his discretion. However, to assist absentee bidders in establishing their maximum bids, the increments shown here will be used in most cases. We recommend that written bids conform to these increments—bids that do not will be reduced accordingly.

Standard Shipping Charges

Weight Class	Shipping Method	Charge
Up to 2 lbs.	Fedex Envelope	\$25
Over 2 lbs.	Fedex Box	\$35 - \$50*
Outside US	Fedex	\$50 - \$100**
Bulky Lots	Fedex Ground or Express	By weight
Value under \$500	Priority Mail Env	\$10.00
hammer	Priority Mail Box	\$25 - \$35
* Up to \$75,000 value and up to 5 lbs; additional charge may apply to packages exceeding limits		
** Buyers outside United States are liable for any applicable customs duty and clearance charges. An accurate declaration of contents and value will be made on all packages and import/export documents. Siegel may refuse to ship lots to certain countries with a high risk factor.		

2/2021

Bid	Increment	Bid	Increment
Up to \$200	\$10	\$20,000-30,000	\$1,000
\$200-500	\$25	\$30,000-70,000	\$2,500
\$500-1,000	\$50	\$70,000-140,000	\$5,000
\$1,000-3,000	\$100	\$140,000-500,000	\$10,000
\$3,000-7,000	\$250	\$500,000-\$1m	\$25,000
\$7,000-20,000	\$500	Above \$1m	Discretionary