

THE
FRANK A. LANZA
Collection of
Premium Quality Canada & Newfoundland



INTERNATIONAL
Robert A. Siegel
IN ASSOCIATION WITH CHARLES F. SHREVE

SALE 1281 • MARCH 30, 2023

THE
FRANK A. LANZA
Collection of
Premium Quality Canada & Newfoundland

SALE 1281—THURSDAY, MARCH 30, 2023, AT 1:30 P.M. (LOTS 701-946)



Live auction at 21 West 38th Street (off Fifth Avenue), 7th Floor, New York City

All lots sold subject to an **18% buyer's premium** and
applicable sales tax or customs duty

Please carefully read the Conditions of Sale before bidding

Presale Viewing by appointment (please call 212-753-6421)

I N T E R N A T I O N A L
Robert A. Siegel
IN ASSOCIATION WITH CHARLES F. SHREVE

21 WEST 38TH STREET, 7TH FLOOR, NEW YORK, N.Y. 10018
Phone (212) 753-6421 • Email: stamps@siegelauctions.com

Catalogues, internet bidding, resources, archives and the Siegel Encyclopedia at
siegelauctions.com



INTERNATIONAL
Robert A. Siegel
 IN ASSOCIATION WITH CHARLES F. SHREVE

21 WEST 38TH STREET, 7TH FLOOR, NEW YORK, N.Y. 10018
 Phone (212) 753-6421 • Email: stamps@siegelauctions.com
 siegelauctions.com



Scott R. Trepel
 President
 strepel
 @siegelauctions.com



John P. Zuckerman
 Senior Vice President
 jzuckerman
 @siegelauctions.com



Corey Long
 Senior Vice President
 clong
 @siegelauctions.com

Siegel International
 Dallas (214) 754-5991



Charles F. Shreve
 Director, Siegel International
 charles
 @siegelauctions.com



Samantha Aragon
 VP, Financial
 samantha
 @siegelauctions.com



Emily Singleton
 VP, Operations
 esingleton
 @siegelauctions.com



Andrea Moreno
 Operations
 andrea
 @siegelauctions.com



Andrew Titley
 VP, Siegel International
 andrew
 @siegelauctions.com



Chris Anderson
 International Specialist
 chris
 @siegelauctions.com

Information for Bidders

Bidding

The following means are available for placing bids:

- 1) **Public Attendance:** Attendance is now permitted for fully vaccinated individuals and for unvaccinated individuals who follow all guidelines to prevent the spread of COVID-19. Live bidding will also be facilitated by mail, email, phone or internet.
- 2) **Live Internet Bidding:** Instructions for participating as a Live Internet Bidder are provided on the page opposite.
- 3) **Phone Bidding:** Bidders can be connected to the sale by phone and bid through a member of staff. Requests for phone bidding are subject to approval (please contact our office at least 24 hours before the sale). A signed Bid Form is required.
- 4) **Absentee Bids:** All bids received in advance of the sale, either by mail, fax, phone, email or internet, are Absentee Bids, which instruct the auctioneer to bid up to a specific amount on one or more lots in the sale. Absentee Bids sent by phone, fax or email should arrive at least one hour prior to the start of the sale session. Bids entered through Live Internet Bidding will be visible to the auctioneer during the sale. Written bids should be entered legibly on the Bid Form in the sale catalogue. Email and internet bids should be carefully typed and double-checked. All new bidders must provide references.

Presale Viewing by Appointment Only

To prevent the spread of COVID-19, presale viewing will be permitted for fully vaccinated individuals or for unvaccinated individuals who agree to follow all protective measures. To make an appointment and receive instructions, please contact us at (212) 753-6421 or by email. We reserve the right to refuse, cancel or postpone a request or appointment.

Expert Certification

Individual items offered without a PF or PSE certificate dated within the past 5 years may be purchased subject to certification of genuineness and our description. **Please refer to the Conditions of Sale and Grading Terms for policies governing certification.**

Shipping and Delivery

Procedures and charges for shipping lots are printed on the back of the Bid Form. **Bidders are responsible for all prescribed shipping charges and any applicable sales tax or customs duties.**

Price Realized

Prices realized are sent with each invoice. Bidders with email will receive a Bid Results report after the sale. Session results are posted immediately to siegelauctions.com

Live and Absentee Internet Bidding at Siegel

ALL INTERNET BIDDING IS NOW HANDLED DIRECTLY FROM THE SIEGEL WEBSITE

**REGISTERED BIDDERS MAY LEAVE BIDS IN ADVANCE OF THE SALE
AND BID LIVE DURING THE AUCTION**

DOWNLOAD THE SIEGEL APP FROM THE APPLE OR GOOGLE PLAY STORES

This step-by-step guide will instruct you how to register and use the bidding interface.

Start by following the simple steps to become a registered internet bidder.

Once you have been approved for bidding, you can leave bids in advance of the sale, listen to the auction and place bids live with the click of a mouse.

Registering with Siegel Auction Galleries

To bid, you must be registered and approved by Siegel.

To decide what you need to do, choose the description below that best fits you.



**I've already registered with Siegel and
have been approved by Siegel for internet bidding**

I'm a Siegel client, but I'm not registered to bid live
Go to **bid.siegelauctions.com** and click on **Login** at the top. Then click on the link for **Sign Up Now**. We will match your new signup to your existing account.

I want to become a Siegel client and bid in auctions
Go to **bid.siegelauctions.com** and click on **Login** at the top. Then click on the link for **Sign Up Now**. You will need to register and provide trade and banking references.

Internet bidding works by allowing registered bidders to observe and place bids, either before the sale or in real-time during the auction.

Live Internet Bidding will work with any browser on both PC and Mac operating systems, or with our app..

Before bidding by internet for the first time, we recommend observing an auction in progress. This will help you develop a feel for the sale tempo and bidding interface.

Log in and participate in the auction at **bid.siegelauctions.com**

When you're logged on as an internet bidder, the bidding interface shows a photo and description of the lot, the current bid (and your bidding status), options for placing competitive bids and buttons with bid increments.

- After you click on a bid amount, the auctioneer is immediately notified of your bid.
- Retracting a bid is not acceptable, so please bid carefully.
- You can track prior realizations from the bidding screen.



"System Down" or "Lost Connection" events do occasionally happen.

If you have any problems with Live Internet Bidding please call 212-753-6421 for immediate assistance.

Conditions of Sale (please read carefully before bidding)

THE PROPERTY IN THIS CATALOGUE WILL BE OFFERED AT PUBLIC AUCTION BY ROBERT A. SIEGEL AUCTION GALLERIES, INC. ("GALLERIES") ON BEHALF OF VARIOUS CONSIGNORS AND ITSELF OR AFFILIATED COMPANIES. BY BIDDING ON ANY LOT, WHETHER DIRECTLY OR THROUGH A THIRD PARTY, IN PERSON, BY TELEPHONE, FACSIMILE, INTERNET OR BY ANY OTHER MEANS, THE BIDDER ACKNOWLEDGES AND AGREES TO ALL OF THE FOLLOWING CONDITIONS OF SALE.

1. The highest bidder acknowledged by the auctioneer shall be the buyer. The term "final bid" means the last bid acknowledged by the auctioneer, which is normally the highest bid offered. **The purchase price payable by the buyer will be the sum of the final bid and a commission of 18% of the final bid ("buyer's premium"), together with any sales tax, use tax or customs duties due on the sale.**

2. The auctioneer has the right to reject any bid, to advance the bidding at his discretion and, in the event of a dispute, to determine the successful bidder, to continue the bidding or to reoffer and resell the lot in dispute. The Galleries' record of the final sale shall be conclusive.

3. All bids are per numbered lot in the catalogue unless otherwise announced by the auctioneer at the time of sale. The right is reserved to group two or more lots, to withdraw any lot or lots from the sale, or to act on behalf of the seller. The Galleries will execute bidding instructions on behalf of clients, but will not be responsible for the failure to execute such bids or for any errors in the execution of such bids.

4. **Lots with numbers followed by the symbol ° are offered subject to a confidential minimum bid ("reserve"), below which the lot will not be sold. The absence of the symbol ° means that the lot is offered without a reserve. If there is no reserve, the auctioneer has sole discretion to establish a minimum opening bid and may refuse an offer of less than half of the published estimate. Any lot that does not reach its reserve or opening bid requested by the auctioneer will be announced as "passed" and excluded from the prices realized lists after the sale. The Galleries may have a direct or indirect ownership interest in any or all lots in the sale resulting from an advance of monies or goods-in-trade or a guarantee of minimum net proceeds made by the Galleries to the seller.**

5. Subject to the exclusions listed in 5(A), the Galleries will accept the return of lots which have been misidentified or which have obvious faults that were present when the lot was in the Galleries' custody, but not so noted in the lot description. **All disputed lots must be received by the Galleries intact with the original packing material within 5 days of delivery to the buyer but no later than 30 days from the sale date.** (5A) **EXCLUSIONS:** The following lots may not be returned for any reason, or may not be returned for the reasons stated: i) lots containing 5 or more items; ii) lots from buyers who registered for the pre-sale exhibition or received lots by postal viewing, thereby having had the opportunity to inspect them before the sale; iii) any lot described with "faults," "defects" or a specific fault may not be returned because of any secondary fault; iv) photographed lots may not be returned because of centering, margins, short/nibbed perforations or other factors shown in the illustrations; v) the color of the item does not match the color reproduction in the sale catalogue or website listing; vi) the description contains inaccurate information about the quantity known or reported; or vii) a certification service grades a stamp lower than the grade stated in the description or on an accompanying certificate.

6. Successful bidders, unless they have established credit with the Galleries prior to the sale, must make payment in full before the lots will be delivered. Buyers not known to the Galleries must make payment in full within 3 days from the date of sale. **The Galleries retains the right to demand a cash deposit from anyone prior to bidder registration and/or to demand payment at the time the lot is knocked down to the highest bidder, for any reason whatsoever.** In the event that any buyer refuses or fails to make payment in cash for any lot at the time it is knocked down to him, the auctioneer reserves the right to reoffer the lot immediately for sale to the highest bidder. **Credit cards (Visa, Mastercard and Discover only) can be accepted as payment but will be subject to a 3% non-refundable Convenience Fee, which will be added to the total of the entire invoice (including hammer price, buyer's premium, shipping and transit insurance charges and any applicable taxes).** The buyer waives the right to dispute all credit card charges.

7. If the purchase price has not been paid within the time limit specified above, nor lots taken up within 7 days from the date of sale, the lots will be resold by whatever means deemed appropriate by the Galleries, and any loss incurred from resale will be charged to the defaulting buyer. **Any account more than 30 days in arrears will be subject to a late payment charge of 1½% per month as long as the account remains in arrears. Any expenses incurred in securing payment from delinquent accounts will be charged to the defaulter.** A fee of \$250.00 per check will be charged for each check returned for insufficient funds.

8. All lots are sold as genuine. **Any lot accompanied by a certificate issued by The Philatelic Foundation, British Philatelic Association, Royal Philatelic Society of London or any other authority recognized by the A.I.E.P. in a specific area of expertise, and dated within 5 years of the sale date, is sold "as is" and in accordance with the description on the certificate. Such lots may not be returned for any reason, including but not limited to a contrary certificate of opinion.** Buyers who wish to obtain a certificate for any item that does not have a certificate (dated as above) may do so, provided that the following conditions are met: (i) the purchase price must be paid in full, (ii) the item must be submitted to an acceptable expertizing committee with a properly executed application form within 21 days of the sale, (iii) a copy of the application form must be given to the Galleries, (iv) the Galleries retains the right to resubmit the item for reconsideration, without time limit or other restrictions, for the purpose of obtaining a satisfactory opinion, (v) lots submitted for certification will be considered cleared 90 days from the date of sale, whether or not a certificate has been issued, unless the Galleries issues written approval of a further extension of return privileges, and (vi) in the event the lot is determined to be misidentified or misdescribed, pursuant to 5 and 5(A) of these Conditions, the Galleries will issue a refund to the buyer for the full purchase price and actual certification fees up to \$800.00, but the reimbursement for certificate fees (and related costs) shall not exceed 10% of the hammer price of the lot.

9. Until paid for in full, all lots remain the property of the Galleries on behalf of the seller.

10. Agents executing bids on behalf of clients will be held responsible for all purchases made on behalf of clients unless otherwise arranged prior to the sale.

11. The buyer assumes all risk for delivery of purchased lots and agrees to pay for prescribed shipping costs. **Buyers who receive lots in the U.S. are obligated to pay whatever sales tax or compensating use tax might be due, at any time, and buyers outside the U.S. are responsible for all customs duties.**

12. **The bidder consents that any action or proceeding against it may be commenced and maintained in any court within the State of New York or in the United States District Court for the Southern District of New York, that the courts of the State of New York and United States District Court for the Southern District of New York shall have jurisdiction with respect to the subject matter hereof and the person of the bidder. The bidder agrees not to assert any defense to any action or proceeding initiated by Galleries based upon improper venue or inconvenient forum. The bidder agrees that any action brought by the bidder shall be commenced and maintained only in a Federal Court in the United States District Court for the Southern District of New York or the State Court in the county in which Galleries has its principal place of business in New York. The bidder agrees not to use a public conflict resolution service and not to use any form of social media to publish comments or information about the Galleries and its employees which might harm the Galleries' reputation or business. These Conditions of Sale shall be governed by and construed in accordance with the substantive laws of the State of New York, and shall constitute an agreement that shall be binding on the parties, and their respective heirs, administrators, distributees, successors and assignees.**

Revised 5/2018

Grades, Abbreviations and Values Used in Descriptions

Grades and Centering

Our descriptions contain detailed information and observations about each item's condition. We have also assigned grades to stamps and covers, which reflect our subjective assessment. For stamps, the margin width, centering and gum are described and graded according to generally accepted standards (an approximate correlation to numeric grades is provided at right). Although we believe our grades are accurate, they are not always exactly aligned with third-party grading terms or standards for all issues. **A lot may not be returned because a certification service grades a stamp lower than the grade stated in the description. Information from the P.S.E. Stamp Market Quarterly and P.S.E. Population ReportSM is the most current available, but lots may not be returned due to errors or changes in statistics or data.**

Extremely Fine Gem (90-100): The term "Gem" describes condition that is the finest possible for the issue. This term is equivalent to "Superb" used by grading services.







Extremely Fine (80-90): Exceptionally large/wide margins or near perfect centering.

Very Fine (70-85): Normal-size margins for the issue and well-centered with the design a bit closer to one side. "Very Fine and choice" applies to stamps that have desirable traits such as rich color, sharp impression, freshness or clarity of cancel.

Fine (60-70): Smaller than usual margins or noticeably off center. Pre-1890 issues may have the design touched in places.

Very Good (below 60): Attractive appearance, but margins or perforations cut into the design.

Guide to Gum Condition

Gum Categories:	MINT N.H.	ORIGINAL GUM (O.G.)				NO GUM
	 Mint Never Hinged <i>Free from any disturbance</i>	 Lightly Hinged <i>Faint impression of a removed hinge over a small area</i>	 Hinge Mark or Remnant <i>Prominent hinged spot with part or all of the hinge remaining</i>	 Part o.g. <i>Approximately half or more of the gum intact</i>	 Small part o.g. <i>Approximately less than half of the gum intact</i>	 No gum <i>Only if issued with gum</i>
Catalogue Symbol:	★ ★	★	★	★	★	(★)
PRE-1890 ISSUES	<i>Pre-1890 stamps in these categories trade at a premium over Scott value</i>			Scott Value for “O.G.”		Scott “No Gum” Values thru No. 218
1890-1935 ISSUES	Scott “Never Hinged” Values for Nos. 219-771	Scott Value for “O.G.” (Actual value will be affected by the degree of hinging)		Disturbed Original Gum: Gum showing noticeable effects of humidity, climate or hinging over more than half of the gum. The significance of gum disturbance in valuing a stamp in any of the Original Gum categories depends on the degree of disturbance, the rarity and normal gum condition of the issue and other variables affecting quality. For example, stamps issued in tropical climates are expected to have some		
1935 TO DATE	Scott Value for “Unused”					

Covers

Minor nicks, short edge tears, flap tears and slight reduction at one side are normal conditions for 19th century envelopes. Folded letters should be expected to have at least one file fold. Light cleaning of covers and small mends along the edges are accepted forms of conservation. Unusual covers may have a common stamp with a slight crease or tiny tear. **These flaws exist in virtually all 19th century covers and are not always described. They are not grounds for return.**

Catalogue Values and Estimates

Unless otherwise noted, the currently available *Scott Catalogue* values are quoted in dollars with a decimal point. Other catalogues are often used for foreign countries or specialized areas and are referred to by their common name: *Stanley Gibbons* (SG), *Dietz*, *American Air Mail Catalogue* (AAMC), *Michel*, *Zumstein*, *Facit*, etc. Estimates are indicated with an "E." and reflect our conservative valuation in dollars. Reserves will never exceed the low end of the estimate range; they will sometimes exceed Scott Catalogue value for stamps in Extremely Fine condition.

Because of certain pricing inconsistencies in the *Scott Catalogue*—for example, blocks that have no gum, the absence of premiums for Mint N.H. items, etc.—we cannot guarantee the accuracy of values quoted for multiples, specialized items and collection lots. We generally try to be conservative, but buyers may not return a lot because of a discrepancy in catalogue value due to Scott pricing inconsistencies.

Symbols and Abbreviations (see chart above for gum symbols)

⊞	Block	E	Essay	pmk.	Postmark	No.	Scott Catalogue Number
⊞	Cover	P	Proof	cds	Circular Datestamp	hs	Handstamp
FC	Fancy Cancel	TC	Trial Color Proof	var.	Variety	ms.	Manuscript

Resources @ siegelauctions.com

CATALOGUES AND PRICES REALIZED

Images and descriptions for all sales going back to 1992, our Rarities sales from 1964 and selected older name sales. PDF catalogs go back to our first sale in 1931.



POWER SEARCH™

Search by Scott number or keyword through all of the sales at our website. The best resource in philately for research.

MY SIEGEL™

Save your Power Searches as want lists. We will automatically notify you when a match is included in an upcoming sale, whether it's as broad as any Columbian issue, or as narrow as a 241 graded 98. The most powerful want list in philately.



LOT TRACKER™

Never miss another lot because you were away from your computer. Log into My Siegel™, then set up notifications to get texts and/or emails 10-30 lots before yours comes up (live bidding is still through Stamp Auction Network).

CENSUS DATA FOR RARITIES

The up-to-date census data for U.S. and select International rarities are a valuable resource for buyers, sellers and researchers. Every recorded example of almost 150 different rare stamps is described and, in most cases, photographed.



GRADED PRICE HISTORY

Graphs show the realizations of each grade over time in our auctions. The data points are easily visible for independent analysis.



We have several other important features of our website, such as the Siegel Encyclopedia, Exhibits, Today in History and a Perpetual Calendar. Go to siegelauctions.com for the most comprehensive website in philately.

AFTERNOON SESSION (LOTS 701-946)
THURSDAY, MARCH 30, 2023, AT 1:30 P.M.

THE FRANK A. LANZA COLLECTION OF
PREMIUM QUALITY CANADA AND NEWFOUNDLAND
CANADA

1851-57 IMPERFORATE ISSUES



701

701 **1851, 3p Orange Vermilion, Laid Paper (1a; SG 1a).** Large margins all around, including extra-large margins at top and bottom, bright color, light **blue** seven-ring cancel, Very Fine and choice, with 2016 Greene Foundation certificate, Scott \$1,000.00, SG £1,100, Unitrade C\$1,600.00..... E. 400-500



702

702 **1851, 6p Slate Violet, Laid Paper (2; SG 2).** Large to huge margins including part of the adjoining stamp's frameline at top, strong color and sharp impression, light target cancel, Extremely Fine, ex Dr. Tang, with 2001 and 2009 Greene Foundation certificates, Scott \$1,500.00, SG £1,400, Unitrade C\$2,000.00..... E. 1,000-1,500

1851 6-PENCE ON LAID PAPER

AN EXTRAORDINARILY RARE SOUND AND CHOICE UNUSED EXAMPLE



703

703 (★) **1851, 6p Slate Violet, Laid Paper (2; SG 2).** Unused (no gum), large to ample margins all around, intense impression and shade on fresh paper, clear laid lines

VERY FINE. AN IMMENSELY RARE UNUSED EXAMPLE OF THE 1851 6-PENCE ON LAID PAPER. ONE OF THE RAREST PENCE ISSUES TO FIND IN SOUND UNUSED CONDITION.

The Pence Issues were printed early in 1851, at the same time that Rawdon, Wright, Hatch & Edson's contract for providing United States stamps was coming to an end. The 6p design was engraved by Alfred Jones based upon a drawing done by W. Drummond.

The 6p Prince Albert is rarer in unused condition than that of both the 3p Beaver and the famous 12p Black. We estimate that no more than 15-20 exist in unused condition. Of those, only a small handful are without faults and we are unaware of any completely sound original gum examples.

Census No. 2-UNC-06. Ex "Calgary". With 1990 and 2018 Greene Foundation certificates. Scott \$30,000.00. SG £50,000. Unitrade C\$60,000.00..... E. 15,000-20,000

1851 12-PENCE BLACK ON LAID PAPER

A DESIRABLE SOUND USED EXAMPLE OF THIS ICONIC CLASSIC RARITY



704

704

1851, 12p Black, Laid Paper (3; SG 4). Four full to ample margins, rich shade and a fine detailed impression, light target cancel

VERY FINE. AN EXTREMELY RARE SOUND USED EXAMPLE OF THE CANADA 12-PENCE BLACK ON LAID PAPER. ONE OF THE BRITISH COMMONWEALTH AND WORLD'S MOST ICONIC AND DESIRABLE CLASSIC RARITIES.

The first Pence Issues of Canada were printed by the New York firm of Rawdon, Wright, Hatch & Edson, the same firm that printed the New York Postmaster's Provisional and United States 5c and 10c 1847 Issue. The Pence issues, and particularly the 12-pence, show the same fine quality of engraving that distinguishes the U.S. 1847 Issue. The original die was engraved by Alfred Jones based upon the Chalon portrait - which was also used on stamps of the Australian States Queensland and Tasmania, Bahamas and New Zealand, among other British colonies. The stamps were printed early in 1851 (12p issued June 14), at the same time that RWH&E's contract for providing United States stamps was coming to an end.

A total of 50,000 stamps were printed from 250 sheets of 200 subjects (two panes of 100). Only 1,450 examples were sold with the balance being destroyed. Our census, available on our website at <https://siegelauctions.com/census/canada/scott/3>, records a total of 37 used singles and two pairs, over half of which have faults to some degree and/or are cut in on at least one side.

Census No. 3-CAN-22. With 1929 R.P.S., 1963 A. Diena, 1987 E. Diena, 2001 and 2015 Greene Foundation certificates. Scott \$145,000.00. SG £100,000. Unitrade C\$160,000.00
..... E. 30,000-40,000



705



706



707

- 705 (★) **1852, 3p Red, Wove Paper (4; SG 5).** Unused (no gum), large to full margins, wonderfully rich color and highly detailed impression on fresh paper, Very Fine and choice, ex “Highlands”, with 2019 Greene Foundation certificate, Scott \$1,250.00, SG £2,750, Unitrade C\$2,000.00 E. 750-1,000
- 706 **1853, 3p Brown Red, Wove Paper (4a; SG 8).** Huge margins all around, stunning proof-like color and impression, barely discernable cancel, Extremely Fine Gem in every regard, with 2007 Greene Foundation certificate, Scott \$250.00, SG £275, Unitrade C\$350.00 E. 400-500
- 707 **1855, 6p Slate Gray, Wove Paper (5; SG 9).** Large margins all around, capturing part of the **imprint** at bottom, attractive rich color, crisp impression, Extremely Fine, with 2011 Greene Foundation certificate, Scott \$1,150.00, SG £1,100, Unitrade C\$1,600.00..... E. 750-1,000



708



709

- 708 **1855, 6p Greenish Gray, Wove Paper (5b; SG 10).** Huge margins all around, lovely rich color and a crisp detailed impression on bright paper, four-ring “1” cancel of Barrie, U.C. (RF 7), Extremely Fine Gem, an outstanding quality stamp, with 1986 R.P.S. and 2019 Greene Foundation certificates, Scott \$1,150.00, SG £1,200, Unitrade C\$1,200.00... E. 1,000-1,500
- 709 **1855, 10p Blue (7; SG 15).** Large even margins all around, deep rich color and sharp impression, relatively light cancel, Very Fine and choice, a challenging stamp to find sound with four margins and lightly cancelled, ex “Scarsdale”, with 1959 R.P.S., 2008 P.F. and 2012 Greene Foundation certificates, Scott \$1,500.00, SG £1,800, Unitrade C\$2,400.00..... E. 750-1,000



710

- 710 (★) **1855, 10p Blue, Thick Wove Paper (7a; SG 20).** Unused (no gum), full to mostly large margins including the adjoining stamp's frameline at top, gorgeous rich color and a well-incised impression

VERY FINE. A RARE AND UNCOMMONLY FRESH UNUSED EXAMPLE OF THE 1857 10-PENCE CARTIER ON THICK PAPER.

With 1981 R.P.S., 1980 and 2015 Greene Foundation certificates. Scott \$10,000.00. SG £16,000. Unitrade C\$14,000.00 E. 3,000-4,000



711



712



713

- 711 **1855, 10p Blue, Thick Wove Paper (7a; SG 20).** Four large margins, deeply rich color and a razor-sharp impression on pristine paper, grid cancel, Extremely Fine, a most attractive stamp, with 2006 Greene Foundation certificate, Scott \$2,000.00, SG £2,250, Unitrade C\$3,000.00 E. 1,000-1,500

- 712 ★★ **1857, ½p Rose (8; SG 17).** Mint N.H., full to large margins, exceptionally fresh, with strong color and impression on bright paper, Very Fine, only a minute number of certified never-hinged stamps from the 1857 Issue exist, with 2014 Greene Foundation certificate, none of the catalogues price this issue in Mint N.H. condition, so catalogue values are as hinged, Scott \$2,000.00, SG £1,000, Unitrade C\$2,800.00 E. 1,000-1,500

- 713 **1857, ½p Rose (8; SG 17).** Mostly large margins, gorgeous rich color and an uncommonly sharp impression, light Hamilton circular datestamp, Very Fine and choice, with 2010 Greene Foundation certificate, Scott \$700.00, SG £650, C\$1,000.00 E. 400-500



714

- 714 (★) **1857, 7½p Green (9; SG 12).** Unused (no gum), wonderfully bright color and a well-incised impression

VERY FINE. A HANDSOME UNUSED CANADA 1857 7½-PENCE GREEN.

Ex "World Traveler" and Markowitz. Signed Bloch. With 1973 Friedl and 2015 Greene Foundation certificates. Scott \$7,000.00. SG £15,000. Unitrade C\$14,000.00.....
..... E. 3,000-4,000

- 715 **1857, 7½p Green (9; SG 12).** Large to extra-large margins, capturing part of the **imprint** in left margin, gorgeous color in a bright shade, sharp impression on fresh paper, light four-ring cancel,

EXTREMELY FINE GEM. A SUPERB STAMP POSSESSING TREMENDOUS EYE APPEAL.

Ex Dr. Tang. Signed Bloch. With 2002 and 2009 Greene Foundation certificates. Scott \$3,000.00, SG £3,250, Unitrade C\$5,000.00 E. 3,000-4,000



715



716

- 716 **1857, 6p Reddish Purple, Very Thick Soft Wove Paper (10; SG 23).** Large to huge margins, wonderfully fresh color and an excellent clarity of impression paper on pristine white paper, light four-ring cancel

EXTREMELY FINE GEM. A STUNNING USED EXAMPLE OF THE 1857 6-PENCE ON VERY THICK SOFT WOVE PAPER. CERTAINLY AMONG THE FINEST AVAILABLE

Ex Collier. With 1998 B.P.A. and 2009 Greene Foundation certificates. Scott \$6,750.00. SG £6,000. Unitrade C\$9,000.00 E. 4,000-5,000

1858-59 PERFORATED PENCE ISSUE



717

717 ★ **1858, ½p Rose, Perf 12 (11; SG 25).** Original gum, small h.r., uncharacteristically well-centered, attractive rich color

VERY FINE. A RARE ORIGINAL-GUM EXAMPLE OF THE 1858 HALF-PENNY ROSE OF THE FIRST PERFORATED ISSUE.

With 2014 Greene Foundation certificate. Scott \$6,000.00, SG £4,750. Unitrade C\$15,000.00..... E. 3,000-4,000



718

718 **1858, ½p Rose, Perf 12 (11; SG 25).** Especially well-centered for this notoriously difficult stamp, light portion of a town cancel, Extremely Fine, a very challenging stamp to find in this select quality, with 2010 Greene Foundation certificate, Scott \$1,500.00, SG £1,200, Unitrade C\$2,500.00..... E. 1,000-1,500

719 **1858, 3p Red, Perf 12 (12; SG 26).** Bright color, well-centered for this very difficult stamp, seven-ring cancel, Very Fine, with 2013 Greene Foundation certificate, Scott \$1,400.00, SG £600, C\$1,800.00..... E. 750-1,000



719

1859 6-PENCE BROWN VIOLET, PERFORATED 12

AN EXTREMELY RARE ORIGINAL-GUM EXAMPLE

ONE OF CANADA'S MOST CHALLENGING STAMPS

TO ACQUIRE IN PREMIUM CONDITION



720

720 ★ **1859, 6p Brown Violet (13; SG 27).** Full original gum that the most recent certificate unfairly calls “slightly disturbed”, well-centered, wide margins which are most uncharacteristic of this tightly-spaced issue, beautiful rich color and a deeply etched impression

VERY FINE. THE FINEST ORIGINAL-GUM EXAMPLE OF THE 1859 6-PENCE BROWN VIOLET OUR FIRM HAS EVER OFFERED. AN IMPORTANT RARITY OF THE PERFORATED PENCE ISSUE

A review of Power Search shows ten different copies of No. 13 with part or full original gum (including a pair offered in our 1981 Rarities sale). Every one of them, with the exception of the stamp offered here, has the perforations cutting the design on at least one side. This stamp easily qualifies as one of the very finest (and maybe the finest) original-gum examples of Scott No. 13.

Unused copies of the 1858-59 Perforated Pence issue are especially challenging to find with original gum. This is demonstrated by the fact the Unitrade adds a 150% premium for the issue, whereas all of the earlier issues only receive 100% premium.

From our 1981 Rarities sale. With 1966 P.F., 2007 P.F. (F 70; “previously hinged”), and 2020 Greene Foundation certificates. Scott \$30,000.00. SG £18,000. Unitrade C\$87,500.00 E. 15,000-20,000



721

- 721 **1859, 6p Brown Violet (13; SG 27).** Far better centered than usually found, deeply rich color and a highly detailed impression on fresh paper, uncharacteristically light cancel
 VERY FINE. A HANDSOME USED EXAMPLE OF THE 1859 6-PENCE PERF 12. ONE OF THE MOST DIFFICULT CLASSIC STAMPS OF CANADA TO FIND IN PREMIUM QUALITY.
 With 2002 and 2011 Greene Foundation certificates. Scott \$7,500.00. SG £5,000. Unitrade C\$12,000.00 E. 2,000-3,000

1859 PERFORATED CENTS ISSUE



722

- 722 **1859, 1c Rose (14; SG 29).** Exceptionally well-centered, rich color in a dark shade, highly detailed impression, lightly cancelled, Extremely Fine, rarely encountered in this choice quality, with 2010 Greene Foundation certificate, Scott \$90.00, SG £55, Unitrade C\$120.00 E. 150-200

- 723 **1859, 5c Vermilion (15; SG 31).** Extraordinarily well-centered, remarkably wide margins, vivid color and impression, light cancel confined to the right margin, Extremely Fine Gem, an eye-arresting stamp, with 2013 Greene Foundation certificate, Scott \$37.50, SG £25, Unitrade C\$50.00 E. 300-400



723

1859 6-PENCE CHOCOLATE BROWN, PERFORATED $11\frac{3}{4}$

A CHOICE UNUSED EXAMPLE IN THIS DISTINCTIVE SHADE



724

724 (★) **1859, 10c Chocolate Brown (16; SG 33; Unitrade 16i).** Unused (no gum), wonderfully well-centered for this issue, intensely rich color in the Chocolate Brown shade, sharp impression

VERY FINE. A GORGEOUS UNUSED EXAMPLE OF THE 1859 10-CENT FIRST PRINTING IN THE CHOCOLATE BROWN SHADE. A KEY STAMP FOR THE "CENTS" ISSUE OF CANADA.

An underrated rarity to find in sound and centered condition. Ex Roberts and "Calgary". With 1994 and 2018 Greene Foundation certificates. Scott \$20,000.00..SG £18,000. Unitrade value C\$20,000.00..... E. 7,500-10,000



725

- 725 **1859, 10c Chocolate Brown (16; SG 33; Unitrade 16i).** Intensely rich color, excellent clarity of impression, exceptional centering for this difficult stamp
 VERY FINE EXAMPLE OF THE 1859 TEN-CENT IN THE CHOCOLATE BROWN SHADE.
 With 2020 Greene Foundation certificate. Scott \$6,000.00. SG £2,500. Unitrade C\$9,000.00 E. 3,000-4,000



726



727



728

- 726 (★) **1859, 10c Brown, Perf 11¼ x 11¼ (17b; SG 36).** Unused (no gum), excellent centering, fresh color, Very Fine, rarely seen this well-centered, with 2013 Greene Foundation certificate, Scott \$1,150.00, SG £1,500, Unitrade C\$1,600.00 E. 500-750
- 727 (★) **1859, 12½c Olive Green (18 var; SG 40; Unitrade 18i).** Unused (no gum), deep rich color, well-centered, fresh and Very Fine, with 2018 Greene Foundation certificate, Scott \$750.00 (as No. 18), SG £1,200, Unitrade C\$1,350.00 E. 400-500
- 728 **1859, 12½c Olive Green (18 var; SG 40; Unitrade 18i).** Precisely centered, deep intense color in this distinct shade, Extremely Fine, with 2006 Greene Foundation certificate, Scott \$150.00 (as No. 18), SG £80, Unitrade C\$220.00 E. 150-200



729

- 729 ★ **1859, 12½c Yellow Green, Imperforate (18b; SG 41a).** Horizontal pair, without gum as issued, large to full margins, rich color

VERY FINE AND CHOICE EXAMPLE OF THE 1859 12½-CENT YELLOW GREEN IMPERFORATE. THE FINEST PAIR WE HAVE OFFERED.

Only one pane (50 pairs) was printed. The others we have offered are close or touching on at least one side.

With 1982 B.P.A. and 2014 Greene Foundation certificates. Scott \$6,500.00. SG £7,000. Unitrade C\$10,000.00 E. 3,000-4,000

- 730 (★) **1859, 17c Blue, Perf 12 (19; SG 42).** Unused (no gum), choice centering which is most unusual on this issue, wonderfully rich color and an excellent impression, Extremely Fine, with 2017 Greene Foundation certificate, Scott \$1,100.00, SG £1,600, Unitrade C\$1,800.00 E. 750-1,000



730



731

- 731 **1859, 17c Blue, Perf 12 (19; SG 42).** Much wider margins than usually encountered, beautiful color in a deep shade, proof-like impression on immaculate white paper, Extremely Fine, and eye-catching stamp, with 2011 Greene Foundation certificate, Scott \$225.00, SG £110, Unitrade C\$300.00.. E. 200-300

- 732 ★ **1859, 17c Blue, Imperforate (19b; SG 42a).** Horizontal pair, without gum as issued, ample to full margins, bright color

VERY FINE IMPERFORATE PAIR OF THE 17-CENT CARTIER. ONLY 100 STAMPS (50 PAIRS) WERE PRODUCED.

With 2014 Greene Foundation certificate. Scott \$6,000.00. SG £6,500. Unitrade C\$10,000.00 E. 2,000-3,000



732



733



734

- 733 ★ **1864, 2c Rose (20; SG 44).** Original gum, lightly hinged, extraordinarily well-centered, attractive color and crisp impression, Extremely Fine, rarely encountered in this choice original-gum quality, with 2013 Greene Foundation certificate, Scott \$1,250.00, SG £600, Unitrade C\$2,000.00..... E. 750-1,000
- 734 **1864, 2c Claret Rose (20a; SG 45; Unitrade 20i).** Uncharacteristically wide margins for the issue, rich color, Montreal datestamp and portion of a red cancel, Extremely Fine, with 2007 Greene Foundation certificate, Scott \$400.00, SG £225, Unitrade C\$425.00..... E. 200-300

- 735 ★ **1864, 2c Rose, Imperforate (20b; SG 45a).** Horizontal pair, without gum as issued, large to full margins, bright shade

VERY FINE IMPERFORATE PAIR OF THE 2-CENT ROSE. ONLY 100 (50 PAIRS) WERE PRINTED).

With 2014 Greene Foundation certificate. Scott \$3,500.00. SG £3,500. Unitrade C\$5,000.00..... E. 1,500-2,000



735

1868-76 LARGE QUEEN ISSUE



736



737



738

- 736 **1868, 1c Brown Red (22; SG 47).** Remarkably wide margins for a Large Queen stamp, beautifully centered, strong rich color on bright paper, Extremely Fine Gem, with 2007 Greene Foundation certificate, Scott \$150.00, SG £85, Unitrade \$200.00 E. 200-300
- 737 **1869, 1c Yellow Orange (23; SG 56a).** Exceedingly wide and wonderfully well-balanced margins all around, brilliant color, two-ring "4" cancel of Halifax, Extremely Fine Gem, with 2003 Sismondo and 2015 Greene Foundation certificates, Scott \$180.00, SG £100, Unitrade C\$250.00.. E. 300-400
- 738 **1868, 2c Green (24; SG 48).** Outstanding centering, uncommonly wide margins, intense color and impression, neat Prince Albert C.W., July 28, 1871 datestamp, Extremely Fine, like all of Mr. Lanza's used Large Queens, this is in a quality that is truly exceptional, with 2013 Greene Foundation certificate, Scott \$100.00, SG £65, Unitrade C\$130.00 E. 200-300



739

- 739 ★ **1868, 3c Red (25; SG 58).** Original gum, lightly hinged, impeccably well-centered, wide margins, fresh color

EXTREMELY FINE GEM. THE FINEST ORIGINAL-GUM EXAMPLE OF THE 1868 3-CENT LARGE QUEEN OUR FIRM HAS OFFERED, AND CERTAINLY OF THE FINEST EXTANT.

With 2014 Greene Foundation and 2018 P.F. certificates (XF 90). Scott \$3,000.00. SG £1,600. Unitrade \$6,000.00..... E. 3,000-4,000



740



741



742

- 740 **1875, 5c Olive Green, Perf 11¼ x 12 (26; SG 63; Unitrade 26iv).** Incredibly wide and perfectly balanced margins all around, rich color in a deep shade, Extremely Fine Gem, a condition rarity in this stellar quality, ex "Scarsdale", with 2001 Greene Foundation certificate, Scott \$225.00, SG £100, Unitrade C\$270.00 E. 400-500

- 741 (★) **1868, 6c Dark Brown (27; SG 59).** Unused (no gum), choice centering, very wide and balanced margins, gorgeous rich color on bright paper, Extremely Fine Gem, with 2014 Greene Foundation certificate, Scott \$2,250.00, SG £1,400, Unitrade C\$3,200.00..... E. 1,000-1,500

- 742 **1868, 6c Dark Brown (27; SG 59).** Extraordinarily wide margins all around, the size of which are rarely encountered on a Large Queen stamp, dark shade contrasting with the immaculate white paper, Extremely Fine Gem, a striking stamp, with 2010 Greene Foundation certificate, Scott \$140.00, SG £75, Unitrade C\$200.00..... E. 200-300



743



744



745

- 743 ★ **1868, 12½c Blue (28; SG 60).** Original gum, lightly hinged, excellent centering, wide margins, beautiful proof-like color and impression on pristine white paper, Extremely Fine, with 2014 Greene Foundation certificate, Scott \$1,400.00, SG £950, Unitrade C\$2,800.00 E. 750-1,000
- 744 **1868, 12½c Blue (28; SG 60).** Excellent centering, bold color and razor-sharp impression on bright paper, lightly cancelled, Extremely Fine Gem, with 2012 Greene Foundation certificate, Scott \$125.00, SG £65, Unitrade C\$160.00 E. 150-200
- 745 **1868, 12½c Blue, Watermarked (Bothwell) (28a; SG 60b).** Clear and complete “C” of the watermark, remarkably well-centered, rich color in a particularly dark shade, very lightly cancelled, Extremely Fine Gem, an especially challenging stamp to find in this superb quality, with 2007 Greene Foundation certificate, Scott \$450.00, SG £300, Unitrade C\$600.00 E. 500-750



746



747



748



749

- 746 ★★ **1868, 15c Gray Violet (29; SG 61b).** Mint N.H., exceedingly wide and well-balanced margins all around, fresh color, full intact perforations, Extremely Fine Gem, while not a scarce stamp, very few copies of No. 29 exist in this choice never-hinged quality, with 2010 Greene Foundation certificate, Unitrade C\$480.00 (the only catalogue that prices never-hinged) E. 300-400
- 747 **1868, 15c Gray Violet (29; SG 61b).** Precise centering, exceedingly wide margins, rich color, Extremely Fine Gem, 2008 Greene Foundation certificate, Scott \$60.00, SG £35, Unitrade C\$80.00 E. 150-200
- 748 ★ **1868, 15c Slate Gray (30; SG 70; Unitrade 30i).** Original gum, single faint hinge mark, choice centering, uncommonly wide margins, wonderfully bright and fresh, Extremely Fine, with 2016 Greene Foundation certificate, Scott \$125.00, SG £75, Unitrade C\$300.00 E. 200-300
- 749 **1875, 15c Blue Gray (30b; SG 69).** Near perfect centering, lovely rich color in this distinctive shade, Extremely Fine Gem, with 2014 Greene Foundation certificate, Scott \$75.00, SG £35, Unitrade C\$100.00 E. 150-200



750

750

1868, 15c Deep Violet on Very Thick Paper (30c; SG 67). Original gum, single h.r., well-centered with wide margins, gorgeous rich color and a well-incised impression

VERY FINE ORIGINAL-GUM EXAMPLE OF THE 15-CENT DEEP VIOLET ON VERY THICK PAPER. ONE OF THE MOST CHALLENGING LARGE QUEEN STAMPS TO FIND UNUSED AND WITH ORIGINAL GUM.

Power Search shows no other unused copies of No. 30c. Ex Roberts. With 1962 P.F. and 2019 Greene Foundation certificates. Scott \$7,500.00. SG £5,000. Unitrade C\$12,000.00 E. 3,000-4,000

751

1868, 15c Deep Violet on Medium Wove Paper (30c var; SG 67 var). Firth Group VIII, paper "B" per certificates, wide margins, rich color, Very Fine example of this scarce shade and paper variety, catalogue values as normal stamp, Scott \$1,200.00, SG £700, Unitrade C\$2,000.00 E. 500-750



751



752

752 (★)

1876, 15c Gray, Pirie Script Watermark (30d; SG 65a). Unused (no gum), rich color

VERY FINE FOR THIS. AN EXTRAORDINARILY RARE UNUSED EXAMPLE OF THE 1876 15-CENT GREENISH GRAY ON SCRIPT WATERMARK PAPER. ONLY A SMALL NUMBER EXIST.

No other unused copies are found on Power Search.

Ex Siverts and Roberts. With 1989 and 2007 Greene Foundation certificates. Scott \$18,500.00. SG £24,000. Unitrade C\$30,000.00 E. 5,000-7,500

1868 ONE-CENT AND 3-CENT ON LAID PAPER
STUNNING SUPERB-QUALITY USED EXAMPLES



753

753 **1868, 1c Brown Red, Laid (31; SG 55a).** Outstanding centering, uncharacteristically wide margins all around, clear horizontal laid lines, pretty shade, neat strike of target cancel

EXTREMELY FINE. A STUNNING USED EXAMPLE OF THE CANADA ONE-CENT BROWN RED ON LAID PAPER. ALMOST NEVER ENCOUNTERED WITH SUCH CHOICE CENTERING AND WIDE MARGINS.

With 2010 Greene Foundation certificate. Scott \$9,000.00. SG £4,000. Unitrade C\$12,500.00..... E. 5,000-7,500



754

754 **1868, 3c Bright Red, Laid Paper (33; SG 58a).** Outstanding centering, particularly wide margins, pretty color in a brilliant shade, fresh paper with easily discernable laid lines, neat six-ring cancel

EXTREMELY FINE. AN OUTSTANDING USED EXAMPLE OF THE 1868 3-CENT LARGE QUEEN ON LAID PAPER.

Ex Lussey. With 2020 Greene Foundation certificate. Scott \$2,400.00. SG £600. Unitrade C\$3,000.00 E. 1,500-2,000

1870-97 SMALL QUEEN ISSUES



755



756



757

- 755 ★★ **1891, ½c Black, Imperforate (34a; SG 102ab).** Horizontal pair, Mint N.H., large margins all around, sharp impression, Very Fine, with 2021 Greene Foundation certificate, Scott \$1,250.00, Unitrade C\$2,000.00 E. 500-750
- 756 ★★ **1870, 1c Yellow (35; SG 75).** Mint N.H., beautifully centered, wide margins all around, bright color, Extremely Fine Gem, with 2013 Greene Foundation certificate, Scott \$125.00, Unitrade C\$240.00 E. 200-300
- 757 ★★ **1872, 2c Green, Imperforate on Yellowish Paper, Ottawa Printing (36a; Unitrade 36iii; SG 78a).** Horizontal pair, Mint N.H., large margins all around, rich color in the deep green shade, Very Fine and choice, with 2021 Greene Foundation certificate, Scott \$1,500.00 (as No. 36a), Unitrade C\$2,250.00..... E. 750-1,000

- 758 ★ **1891, 2c Green, Imperforate Pair (36a; SG 78a).** Horizontal pair, without gum as issued, large margins all around, strong color, Very Fine, with 2018 Greene Foundation certificate, Scott \$650.00, Unitrade C\$900.00..... E. 200-300



758



759

- 759 ★★ **1876, 5c Slate Green (38; SG 85).** Mint N.H., exceptionally wide and perfectly balanced margins all around, strong rich color on bright paper
- EXTREMELY FINE GEM. AN ESPECIALLY HANDSOME NEVER-HINGED EXAMPLE OF THE 5-CENT SMALL QUEEN.
- With 2010 Greene Foundation certificate. Scott \$2,250.00. Unitrade C\$3,000.00..... E. 1,500-2,000



- 760 ★★ **1873, 6c Yellow Brown, Perf 11½ x 12 (39b; SG 98).** 1873 plate with position dot under left “6” and bare chignon on Queen’s head, Mint N.H., wide margins, wonderfully fresh color on immaculate paper, Very Fine and choice, with 2014 Greene Foundation certificate, Scott \$2,500.00, Unitrade C\$3,600.00 E. 1,000-1,500
- 761 ★★ **1885-86, 3c Orange Vermilion, Imperforate (41b; SG 105b; Unitrade 41ii).** Horizontal pair, Mint N.H., dazzling color, huge to large margins, Extremely Fine, with 2014 Greene Foundation certificate, Scott \$1,000.00 (as No. 41b), Unitrade C\$1,500.00..... E. 500-750
- 762 ★ **1891, 3c Bright Vermilion, Imperforate (41b; SG 105b).** Horizontal pair, without gum as issued, large margins, fresh color, Very Fine, with 2017 Greene Foundation certificate, Scott \$450.00, Unitrade C\$600.00..... E. 200-300
- 763 ★★ **1889, 5c Gray (42; SG 106).** Mint N.H., incredibly wide and balanced margins, rich color, Extremely Fine Gem, a fabulous stamp, with 1994 and 2009 Greene Foundation certificate, Scott \$650.00, Unitrade C\$900.00 E. 750-1,000
- 764 ★★ **1889, 6c Red Brown (43; SG 107).** Mint N.H., choice centering, gorgeous color in a shade that is intensely rich, proof-like impression, Extremely Fine, with 2015 Greene Foundation and 2018 P.F. certificates (XF 90), Scott \$800.00, Unitrade C\$1,200.00 E. 750-1,000
- 765 ★ **1895, 6c Red Brown, Imperforate (43b; SG 107c).** Horizontal pair, without gum as issued, large to extra-large margins, proof-like color and impression, Extremely Fine, with 2021 Greene Foundation certificate, Scott \$550.00, Unitrade C\$750.00..... E. 300-400
- 766 ★★ **1893, 8c Violet Black (44; SG 117).** Mint N.H., wide margins, well-centered, deep color and outstanding impression on immaculate white paper, Extremely Fine, with 2011 Greene Foundation certificate, Scott \$1,000.00, Unitrade C\$1,400.00..... E. 500-750
- 767 ★★ **1893, 8c Blue Gray (44a; SG 117).** Mint N.H., exceptionally fresh color from this early printing, well-centered, Very Fine, with 1988 and 2019 Greene Foundation certificates, Scott \$1,500.00, Unitrade C\$2,200.00 E. 750-1,000



768



769

- 768 ★★ **1895, 8c Blue Gray, Imperforate (44d; SG 117a).** Horizontal pair, Mint N.H., large margins, fresh color, Very Fine, with 2016 Greene Foundation certificate, Scott \$1,750.00, Unitrade C\$2,500.00 E. 500-750
- 769 ★ **1897, 8c Violet Black, Imperforate (44d var; SG 120a; Unitrade 44i).** Horizontal pair, without gum as issued, full to mostly large margins, rich color, "very crisp printing" noted on certificate, Very Fine, with 2015 Greene Foundation certificate, Unitrade C\$1,250.00..... E. 400-500



771



770

- 770 ★★ **1897, 10c Brown Red (45; SG 110).** Mint N.H., immensely wide margins, wonderfully rich color and well-incised impression

EXTREMELY FINE GEM. A SPECTACULAR EXAMPLE OF THE 10-CENT BROWN RED, OTTAWA PRINTING - WITH THE WIDEST MARGINS POSSIBLE.

With 1985 and 2015 Greene Foundation certificates (as No. 45a, but correctly noting the Brown Red color). Scott \$1,900.00. Unitrade C\$2,700.00 E. 2,000-3,000

- 771 ★ **1891, 10c Rose Carmine, Imperforate (45c; SG 111a; Unitrade 45i).** Horizontal pair, without gum as issued, large margins all around, brilliantly fresh, Extremely Fine, with 2015 Greene Foundation certificate, Scott \$550.00 (as No. 45c), Unitrade C\$750.00..... E. 300-400

- 772 ★★ **1893, 20c Vermilion (46; SG 115).** Mint N.H., incredibly wide and perfectly balanced margins all around, radiant color and an excellent clarity of impression on fresh paper

EXTREMELY FINE GEM. VIRTUALLY NEVER ENCOUNTERED IN THIS FABULOUS NEVER-HINGED CONDITION. QUITE POSSIBLY THE FINEST EXTANT.

With 2014 Greene Foundation and 2019 P.F. certificates (XF-Superb 95). Scott \$1,750.00. Unitrade C\$2,400.00..... E. 3,000-4,000



772

- 773 ★★ **1893, 50c Blue (47; SG 116).** Mint N.H., exceedingly well-centered, wide margins all around, rich luxuriant color and vivid impression on pristine paper

EXTREMELY FINE. A BEAUTIFUL MINT NEVER-HINGED EXAMPLE OF THE 1893 50-CENT BLUE.

With 2011 Greene Foundation certificate. Scott \$1,750.00. Unitrade C\$2,400.00 E. 2,000-3,000



773



774

- 774 ★★ **1893, 20c Vermilion, 50c Deep Violet Blue, Imperforate (46a-47a; SG 115a-116a).** Horizontal pairs, Mint N.H., mostly large margins all around, strong colors

VERY FINE. A RARE MINT NEVER-HINGED SET OF IMPERFORATE PAIRS OF THE 1893 QUEEN VICTORIA LARGE FORMAT STAMPS.

Each with 2010 Greene Foundation certificate. Scott \$8,000.00. Unitrade C\$10,800.00....
..... E. 3,000-4,000



775

- 775 (★) **1893, 20c Vermilion, 50c Deep Violet Blue, Imperforate (46a-47a; SG 115a-116a).** Horizontal pairs, unused (no gum), each a bottom corner margin pair, fresh colors, 20c with faint crease at bottom between stamps, otherwise Extremely Fine, a stunning duo, ex Baron, each with 2017 Greene Foundation certificate, Scott \$2,700.00, Unitrade C\$3,600.00 E. 1,000-1,500



776EX

1897 JUBILEE ISSUE

AN EXTREMELY RARE AND DESIRABLE SET OF LARGE DIE PROOFS



776EX

776 P **1897, ½c-\$5.00 Jubilee, Large Die Proofs (50P1-65P1).** Each die sunk on 225 x 151mm card, incredibly fresh and pristine throughout, with radiant proof colors and the cards immaculate on both sides

EXTREMELY FINE. A MAGNIFICENT AND EXTREMELY RARE SET OF LARGE DIE PROOFS OF THE 1897 JUBILEE ISSUE. AN INDISPENSIBLE SET FOR THE SERIOUS JUBILEE SPECIALIST OR COLLECTOR OF CANADIAN PROOFS.

The only complete sets of large die proofs of the Jubilee issue were dispersed in the 1990 sale of the American Bank Note Company archives. It is believed only about twenty complete sets are available to collectors.....(Photo Ex/Website PDF) E. 10,000-15,000



James W. Woods, Esq.



Ottawa

James W. Woods, Esq.



James W. Woods, Esq.



Ottawa

James W. Woods, Esq.

75 Queen St

Ottawa

1897 JUBILEE ISSUE

A SPECTACULAR COMPLETE MATCHING SET OF COVERS
WITH DIAMOND JUBILEE WAVING FLAG CANCELLATIONS



777EX

777 ☒ **1897, ½c-\$5.00 Jubilee (50-65).** Each value on separate matching cover, tied by Ottawa Aug. 10, 1897 Diamond Jubilee flag cancels, addressed locally to James Wood, Esq., stamps and covers are exceedingly fresh, \$3.00 cover with trivial scuff at bottom left (correctly not mentioned on certificate)

EXTREMELY FINE. AN INCOMPARABLE MATCHED SET OF THE 1897 JUBILEE ISSUE ON INDIVIDUAL COVERS WITH THE DIAMOND JUBILEE CANCEL.

From our 1982 Rarities Sale. Each with Vincent G. Greene handstamp on backflap. Dollar values each with a 2011 Greene Foundation certificate. (Photo Ex/Website PDF) E. 7,500-10,000



- 778 ★★ **1897, ½c Jubilee (50).** Mint N.H., uncommonly wide and extraordinarily well-balanced margins, rich shade and a crisp impression, Extremely Fine Gem, ex Dr. Killien, with 2016 Greene Foundation, 1996, and 2016 P.F. certificates (XF-Superb 95), Scott \$275.00, Unitrade C\$450.00 E. 400-500
- 779 ★★ **1897, 1c Jubilee (51).** Mint N.H., enormously wide margins all around, the size of which are rarely seen on any Jubilee stamp, radiant color, Extremely Fine Gem, with 2019 P.S.E. certificate (XF 90 Jumbo), Scott \$75.00, Unitrade C\$120.00 E. 150-200
- 780 ★★ **1897, 2c Jubilee (52).** Mint N.H., excellent centering, uncommonly wide margins, intensely rich color, Extremely Fine Gem, with 2020 P.S.A.G. certificate (95), Scott \$92.50, Unitrade C\$150.00 E. 150-200
- 781 ★★ **1897, 3c Jubilee (53).** Mint N.H., extraordinarily well centered, jumbo margins all around, lovely bright color, Extremely Fine Gem, a striking stamp, ex Dr. Killien, with 2016 Greene and 2019 P.F. certificates (Superb 98), Scott \$75.00, Unitrade C\$120.00 E. 300-400
- 782 ★★ **1897, 5c Jubilee (54).** Mint N.H., precise centering, rich color in a dark shade, Extremely Fine Gem, with 2019 P.F. certificate (XF-Superb 95), Scott \$200.00, Unitrade C\$300.00 E. 200-300
- 783 ★★ **1897, 6c Jubilee (55).** Mint N.H., exceptionally choice centering with balanced margins, strong color and vivid impression, Extremely Fine Gem, the 6c is the most difficult value of the Jubilee series to find in this superb Mint N.H. quality, ex Pope, with 1994 Greene Foundation, 2019 P.F., and 2019 P.S.E. certificates (latter two XF-Superb 95; SMQ \$1,600.00), Scott \$625.00, Unitrade C\$900.00 E. 750-1,000
- 784 ★★ **1897, 8c Jubilee (56).** Mint N.H., outstanding centering with particularly wide margins, deep intense shade on bright paper, Extremely Fine Gem, a truly remarkable example in every respect, ex "Scarsdale", with 2007 P.F. certificate (XF-Superb 95), Scott \$300.00, Unitrade C\$600.00 E. 400-500



785



786

- 785 ★★ **1897, 10c Jubilee (57).** Mint N.H., incredibly wide and marvelously balanced margins, gorgeous rich color and a crisp impression, Extremely Fine Gem, a superb stamp for the connoisseur, ex Dr. Killien, with 2015 and 2017 P.F. certificates (XF-Superb 95), Scott \$450.00, Unitrade C\$750.00 E. 500-750

- 786 ★★ **1897, 15c Jubilee (58).** Mint N.H., flawless centering, wide margins, rich vibrant color and a sharp impression on fresh paper, Extremely Fine Gem, a stamp for the collector assembling their Jubilee set in only the finest attainable quality, with 2002 P.S.E., 2016 Greene Foundation, and 2017 P.F. certificates (Superb 98), Scott \$750.00, Unitrade C\$1,350.00..... E. 1,000-1,500

- 787 ★★ **1897, 20c Jubilee (59).** Mint N.H., dazzling intense color and a deeply etched impression on fresh paper, exceptionally well-centered with wide margins, Extremely Fine Gem, a gorgeous stamp, ex Dr. Killien, with 2002 and 2018 P.F. certificates (XF 90 XQ; the "XQ" denotes "Extraordinary Quality"), Scott \$750.00, Unitrade C\$1,350.00 E. 750-1,000



787



788

- 788 ★★ **1897, 50c Jubilee (60).** Mint N.H., particularly well-centered and with wide margins, gorgeous rich color, Extremely Fine Gem, with 2012 and 2018 P.F. certificates, both grading XF 90 XQ, ("XQ" denotes "Extraordinary Quality"), Scott \$775.00, Unitrade C\$1,500.00 E. 750-1,000

- 789 ★★ **1897, \$1.00 Jubilee (61).** Mint N.H., impeccably well-centered, extravagantly wide margins all around, gorgeous color in a deep luxuriant shade, razor-sharp impression

EXTREMELY FINE GEM. THE FINEST QUALITY MINT NEVER-HINGED ONE-DOLLAR JUBILEE WE HAVE OFFERED AND AMONG THE VERY FINEST IN EXISTENCE.

With 2013 Greene Foundation, 2011, and 2017 P.F. certificates (XF-Superb 95). Scott \$1,900.00. Unitrade C\$3,000.00 E. 3,000-4,000



789



790

790 ★★ **1897, \$2.00 Jubilee (62).** Mint N.H., well centered, wide margins, fresh color

VERY FINE AND CHOICE MINT NEVER-HINGED 2-DOLLAR JUBILEE.

With 1999 Greene Foundation certificate (when it had selvage) and 2012 Greene Foundation certificate. Scott \$3,750.00. Unitrade C\$8,000.00 E. 1,500-2,000

791 ★★ **1897, \$3.00 Jubilee (63).** Mint N.H., excellent centering and with wide margins, gorgeous rich color and a deeply etched impression

EXTREMELY FINE GEM. A HIGHLY DESIRABLE MINT NEVER-HINGED 3-DOLLAR JUBILEE.

With 2010 Greene Foundation certificate. Scott \$3,750.00. Unitrade C\$6,000.00 E. 2,000-3,000



791



792

792 ★★ **1897, \$4.00 Jubilee (64).** Mint N.H., well-centered, rich color on bright paper

FRESH AND VERY FINE MINT NEVER-HINGED 4-DOLLAR JUBILEE.

With 2014 Greene Foundation certificate. Scott \$3,750.00. Unitrade C\$8,000.00 E. 1,500-2,000

793 ★★ **1897, \$5.00 Jubilee (65).** Mint N.H., extraordinarily well-centered, wide margins, stunning rich color and razor-sharp impression on fresh white paper

EXTREMELY FINE GEM. A SUPERB MINT NEVER-HINGED EXAMPLE OF THE 1897 5-DOLLAR JUBILEE. ALMOST NEVER ENCOUNTERED IN THIS CHOICE QUALITY.

With 2009 Greene Foundation certificate. Scott \$4,250.00. Unitrade C\$8,000.00 E. 3,000-4,000



793

1897-98 MAPLE LEAF AND NUMERAL ISSUES
 A SPECTACULAR COMPLETE SET OF LARGE DIE PROOFS
 ONLY FIVE SUCH SETS EXIST



794EX

794 P **1897-98, ½c-10c Maple Leaf, Large Die Proofs on India (66P1-73P1).** Die sunk on 150 x 227mm card, die nos. F-102 to F-109 and ABNC imprint below, remarkably fresh, with pristine cards on both the front on back, brilliant colors throughout

EXTREMELY FINE. A SPECTACULAR SET OF LARGE DIE PROOFS OF THE 1897-98 MAPLE LEAF ISSUE. ONLY FIVE COMPLETE SETS EXIST.

From the 1990 American Bank Note Company archives sale, where just five complete sets were dispersed.(Photo Ex/Website PDF) E. 10,000-15,000



795EX

795 ★★ **1897-98, ½c-10c Maple Leaf, Imperforate (66a-73a).** Horizontal pairs, Mint N.H., large to huge margins including 1c, 2c, and 5c with sheet margins, brilliant colors

VERY FINE-EXTREMELY FINE. A HANDSOME AND RARE MINT NEVER-HINGED SET OF THE 1897-98 MAPLE LEAF ISSUE IN IMPERFORATE PAIRS.

No more than 100 sets of pairs can exist. Both the 8c and 10c are on vertical wove paper.

Each with 2012 Greene Foundation certificate. Five also have earlier Greene Foundation certificates. Scott \$9,000.00. Unitrade C\$20,625.00.....

.....(Photo Ex/Website PDF) E. 4,000-5,000



796

796 ☒ **1897, ½c-10c Maple Leaf (66-73).** Complete set tied by Thedford Oct. 13, 1898 circular datestamps on registered cover to Berlin, Ontario, registry handstamp and ms. "884", several backstamps including Berlin receiver of Oct. 14, stamps are quite fresh, cover with slit at right from opening, otherwise Very Fine and attractive, with 2015 Greene Foundation certificate E. 500-750



797



798



799



800

- 797 ★★ **1897, ½c Black Maple Leaf (66).** Mint N.H., flawless centering, lavish margins all around, fresh shade, Extremely Fine Gem, with 2018 Greene Foundation and 2015 P.F. certificates (Superb 98), Scott \$37.50, Unitrade C\$60.00..... E. 200-300
- 798 ★★ **1897, 1c Blue Green Maple Leaf (67).** Mint N.H., extraordinarily wide balance margins all around, stunning proof-like color and impression on the most immaculate paper imaginable, Extremely Fine Gem, an eye-arresting stamp, with 2007 Greene Foundation and 2017 P.F. certificates (XF-Superb 95), Scott \$140.00, Unitrade C\$240.00 E. 300-400
- 799 ★★ **1897, 2c Purple Maple Leaf (68).** Mint N.H., excellent centering, uncommonly wide margins, intense color and impression on bright paper, Extremely Fine, with 2015 Greene Foundation certificate, Scott \$125.00, Unitrade C\$240.00 E. 200-300
- 800 ★★ **1898, 3c Carmine Maple Leaf (69).** Mint N.H., exceedingly wide and well-balanced margins, bright color, Extremely Fine, with 2009 Greene Foundation certificate, Scott \$250.00, Unitrade C\$375.00 E. 400-500



801



802



803

- 801 ★★ **1897, 5c Dark Blue on Bluish Paper Maple Leaf (70).** Mint N.H., choice centering and wide margins, gorgeous color in a particularly dark shade, Extremely Fine, with 2008 Greene Foundation certificate, Scott \$500.00, Unitrade C\$750.00 E. 300-400
- 802 ★★ **1897, 6c Brown Maple Leaf (71).** Mint N.H., extraordinarily well-centered, wide margins, wonderfully rich color and deeply etched impression on bright paper, Extremely Fine Gem, with 2006 Greene Foundation and 2017 P.F. certificates (XF-Superb 95), Scott \$350.00, Unitrade C\$600.00 E. 400-500
- 803 ★★ **1897, 8c Orange Maple Leaf (72).** Mint N.H., remarkably wide and beautifully balance margins all around, radiant color on fresh paper, Extremely Fine Gem, a stamp with great visual appeal, 2010 Greene Foundation certificate, Scott \$850.00, Unitrade C\$1,350.00 E. 1,000-1,500



804

- 804 ★★ **1898, 10c Brown Violet Maple Leaf (73).** Mint N.H., exceedingly well-centered, wide margins, deeply rich color and highly detailed impression on bright paper, Extremely Fine Gem, rare to find all of these impressive attributes converging on a single stamp, with 2016 Greene Foundation certificate, Scott \$1,500.00, Unitrade C\$2,400.00 E. 1,500-2,000



805EX

- 805 ★ **1898-1902, ½c-10c Numerals, Imperforate (73a/83a).** ½c, 1c, 2c (Type II), 5c, 7c, 8c, and 10c in horizontal pairs, this comprises the seven values that either all or part were printed without gum (except for the rare 20c), large margins including 1c and 5c with sheet margins, bright and fresh throughout, **7c with major re-entry on left stamp**

EXTREMELY FINE. A HANDSOME GROUP OF IMPERFORATE PAIRS OF THE 1898-1902 NUMERAL ISSUE.

Each with 2014-21 Greene Foundation certificate. Scott \$7,750.00. Unitrade C\$6,750.00(Photo Ex/Website PDF) E. 2,000-3,000

- 806 ★★ **1898, 1c Gray Green (75).** Mint N.H., incredibly wide margins all around, fresh color and paper, Extremely Fine Gem, rare to find any stamp from this issue with margins this wide, with 2014 Greene Foundation certificate, Scott \$100.00, Unitrade C\$240.00 E. 200-300



806



807



808



809



810

- 807 ★★ **1899, 2c Purple, Thick Paper (76a).** Mint N.H., impeccably well-centered, beautiful rich color and crisp impression, Extremely Fine Gem, not easy to find in this choice quality, with 2018 Greene Foundation and 2019 P.F. certificates (XF-Superb 95), Scott \$350.00, Unitrade C\$750.00 E. 300-400
- 808 ★★ **1899, 2c Carmine, Ty. I (77).** Mint N.H., incredibly well-centered, wide margins all around, brilliant color, Extremely Fine Gem, a gorgeous stamp, with 2007 Greene Foundation and 2019 P.F. certificates (Superb 98), Scott \$110.00, Unitrade C\$270.00 E. 200-300
- 809 ★★ **1898, 3c Carmine (78).** Mint N.H., extravagantly wide and perfectly balanced margins all around, brilliant color on pristine paper, Extremely Fine Gem, while by no means a scarce stamp, No. 78 is rarely encountered in this stellar quality, Scott \$250.00, Unitrade C\$450.00, with 2008 Greene Foundation and 2019 P.F. certificates (Superb 98) E. 400-500
- 810 ★★ **1899, 5c Blue on White Paper (79b).** Mint N.H., choice centering, wide margins, incredibly fresh, in a stunning deep shade, Extremely Fine Gem, with 2016 Greene Foundation certificate, Scott \$500.00, Unitrade C\$1,050.00 E. 400-500



811



812



813

- 811 ★★ **1898, 6c Brown (80).** Mint N.H., extravagant margins, marvelously well-centered, uncommonly bright and fresh, Extremely Fine Gem, with 2018 Gratton, 2020 P.F. (XF-Superb 95) and 2021 Greene Foundation certificates, Scott \$400.00, Unitrade C\$900.00 E. 500-750
- 812 ★★ **1902, 7c Olive Green (81).** Mint N.H., extraordinarily well-centered with wonderfully wide margins, lovely vibrant color on bright paper, Extremely Fine Gem, ex "Scarsdale", with 2011 P.F. certificate (XF-Superb 95), Scott \$280.00, Unitrade C\$900.00. E. 400-500
- 813 ★★ **1898, 8c Orange (82).** Mint N.H., excellent centering, wonderfully bright color, Extremely Fine, with 2010 Greene Foundation certificate, Scott \$700.00, Unitrade C\$1,800.00 E. 500-750



814

- 814 ★★ **1898, 10c Brown Violet (83).** Mint N.H., extraordinarily well-centered, uncharacteristically wide margins, lovely bright color on pristine white paper, Extremely Fine Gem, a very challenging stamp to find in this outstanding quality, with 2019 Greene Foundation and 2020 P.F. certificates (XF-Superb 95), Scott \$900.00, Unitrade C\$2,250.00 E. 1,000-1,500

- 815 ★★ **1900, 20c Olive Green (84).** Mint N.H., magnificently well-centered, spectacular color in deep shade, extraordinarily detailed impression on pristine white paper

EXTREMELY FINE GEM. A SUPERB MINT NEVER-HINGED EXAMPLE OF THE 1900 20-CENT OLIVE GREEN.

A rare stamp in this incomparable quality.

Ex Dr. Tang and Dr. Killien. With 2006 P.F. (XF-Superb 95) and 2016 Greene Foundation certificate. Scott \$1,300.00. Unitrade C\$3,000.00 E. 2,000-3,000



815



816

- 816 ★ **1898, 2c Black, Blue & Carmine, Map Stamp, Imperforate (86a).** Vertical pair, without gum as issued, large margins including a **sheet margin** at left, exceptionally fresh, Extremely Fine, with 2013 Greene Foundation certificate, Scott \$450.00, Unitrade C\$700.00 E. 200-300

1903-08 KING EDWARD VII ISSUE

- 817 ★ **1903 1c-10c King Edward VII, Imperforate (89a, 90A, 91a-93a).** Set in horizontal pairs, though the 2c is the issued stamp (Type II), without gum as issued, large margins, bright colors, Very Fine-Extremely Fine, Scott \$3,675.00, Unitrade C\$4,900.00 (Photo Ex/Website PDF) E. 1,000-1,500



817EX



818



819



820

- 818 ★★ **1903, 1c Green (89).** Mint N.H., precisely centered, wide margins, rich color in a dark shade, Extremely Fine Gem, with 2007 Greene Foundation certificate, Scott \$140.00, Unitrade C\$280.00 E. 200-300
- 819 ★★ **1903, 2c Carmine, Ty. II (90).** Mint N.H., exceptionally wide and beautifully balanced margins, vibrant color, Extremely Fine Gem, with 2013 Greene Foundation certificate, Scott \$190.00, Unitrade C\$350.00 E. 200-300
- 820 ★★ **1903, 5c Blue on Blue (91).** Mint N.H., outstanding centering, lavish margins all around, intense color and proof-like impression, Extremely Fine Gem in every regard, with 2007 Greene Foundation and 2017 P.F. certificates (XF-Superb 95 XQ), the "XQ" stands for "Extraordinary Quality", Scott \$800.00, Unitrade C\$1,225.00 E. 750-1,000



821



822

- 821 ★★ **1903, 7c Olive Bister (92).** Mint N.H., excellent centering with wide margins all around, fresh color, Extremely Fine Gem, with 2008 Greene Foundation and 2017 P.F. certificates (XF-Superb 95), Scott \$750.00, Unitrade C\$1,750.00 E. 500-750
- 822 ★★ **1903, 10c Brown Lilac (93).** Mint N.H., uncommonly wide margins, well-centered, strong rich color, Extremely Fine, with 2007 P.F. (XF 90) and 2008 Greene Foundation certificates, Scott \$1,250.00, Unitrade C\$2,800.00..... E. 500-750



823

823 ★★ **1904, 20c Olive Green (94).** Mint N.H., near perfect centering, beautiful color in a deep shade, highly detailed impression on fresh paper

EXTREMELY FINE GEM. A HIGHLY DESIRABLE MINT NEVER-HINGED EXAMPLE OF THE 1904 20-CENT KING EDWARD VII.

With 1980 and 2007 Greene, and 2016 P.F. certificates (XF-Superb 95), Scott \$2,500.00, Unitrade C\$4,375.00 E. 2,000-3,000

1908 QUEBEC TRICENTENARY ISSUE

824 ★ **1908, ½c-20c Tercentenary, Imperforate (96a-103a; Unitrade 96ii-103ii).** Vertical pairs, without gum as issued, each with large margins and fresh colors, ½c with insignificant vertical crease

VERY FINE. A DESIRABLE AND WELL-MATCHED SET OF THE 1908 TRICENTENARY IN IMPERFORATE PAIRS.

Scott \$6,000.00. Unitrade C\$8,000.00
.....(Photo Ex/Website PDF) E. 1,500-2,000



824EX



825

825 ★★ **1908, 1c Tercentenary (97).** With “hair-lines” (Unitrade 97i), Mint N.H., extraordinarily wide and balanced margins all around, proof-like color and impression, Extremely Fine Gem, with 2007 and 2008 Greene Foundation, and 2018 P.F. certificates (XF-Superb 95 Jumbo), Scott \$75.00, Unitrade C\$180.00 E. 150-200

- 826 ★★ **1908, 5c Tercentenary (99).** Mint N.H., mathematically precise centering, remarkably wide margins, deep color and a superbly detailed impression on the most immaculate paper possible, Extremely Fine Gem, with 2007 Greene Foundation and 2017 P.F. certificates (Superb 98 XQ), the “XQ” denotes “Extraordinary Quality” and the Philatelic Foundation reserves the grade of 98 XQ only for stamps in incomparable condition, Scott \$210.00, Unitrade C\$450.00 E. 750-1,000



826



827



828

- 827 ★★ **1908, 7c Tercentenary (100).** Mint N.H., flawless centering, exceptionally wide margins, rich color and crisp impression, Extremely Fine Gem, with 2022 Greene Foundation certificate, Scott \$350.00, Unitrade C\$600.00 E. 400-500
- 828 ★★ **1908, 10c Tercentenary (101).** Mint N.H., exceedingly wide and perfectly balanced margins, deep proof-like color and impression on pristine white paper, Extremely Fine Gem, a stamp that cannot be improved upon, ex “Crossings” and Dr. Killien, with 2010 Greene Foundation and 2017 P.F. certificates (XF-Superb 95 XQ), the “XQ” denotes “Extraordinary Quality”, Scott \$500.00, Unitrade C\$900.00 E. 500-750



829



830

- 829 ★★ **1908, 15c Tercentenary (102).** Mint N.H., essentially perfect centered, extravagantly wide margins, radiant color and an excellent clarity of impression on brilliant paper, Extremely Fine Gem, a stunning stamp, with 2021 Greene Foundation and P.F. certificates (Superb 98), Scott \$550.00, Unitrade C\$1,050.00 E. 750-1,000
- 830 ★★ **1908, 20c Tercentenary (103).** Mint N.H., excellent centering, wide margins, lovely rich color, sharp impression, Extremely Fine, with 2017 Greene Foundation certificate, Scott \$625.00, Unitrade C\$1,200.00 E. 400-500

1922-25 ADMIRAL ISSUE

A GEM-QUALITY SET OF IMPERFORATE PAIRS—
LIKELY THE FINEST SET AVAILABLE



831

- 831 ★ **1922-25, 4c-\$1.00 Admirals, Imperforate (110a-122a).** Complete set of the eight values that exist imperforate, all in horizontal pairs, Mint N.H. except 7c lightly hinged and 50c with just the slightest gum disturbance, **7c with plate variety diagonal line in "V" of "SEVEN"** (Unitrade 114iv, not listed imperforate), each with large margins all around, remarkably bright and fresh

A RARE AND MAGNIFICENT SET OF THE 1922-25 ADMIRAL ISSUE IN IMPERFORATE PAIRS. ONE OF THE VERY FINEST SETS OBTAINABLE.

The imperforate stamps of the Admiral issue invariably come with faults to some degree. The Lanza set, with its large margins, six of the eight values possessing pristine Mint N.H. gum, and without any faults, is one of the finest available.

Ex Poole. Each with 2015 Greene Foundation certificate. Scott \$30,500.00. Unitrade C\$43,000.00 E. 10,000-15,000



832



833



834



835

- 832 ★★ **1922, 2c Green (107).** Mint N.H., marvelously well-centered, extraordinarily wide margins, gorgeous rich color on bright white paper, Extremely Fine Gem, with 2018 P.F. certificate (Superb 98), Scott \$90.00, Unitrade C\$150.00 E. 150-200
- 833 ★★ **1923, 3c Brown, Dry Printing (108c).** Mint N.H., lavish and wonderfully balance margins all around, deep color and impression on pristine white paper, Extremely Fine Gem, with 2015 .P.F. certificate (XF-Superb 95), Scott \$70.00, Unitrade C\$150.00 E. 150-200
- 834 ★★ **1925, 4c Yellow Ocher, Dry Printing (110d).** Mint N.H., outstanding centering, wide margins, bright color on fresh paper, Extremely Fine Gem, with 2016 P.F. certificate (XF-Superb 95), with 2016 P.F. certificate (XF-Superb 95), Scott \$150.00, Unitrade C\$240.00 E. 200-300
- 835 ★★ **1912, 5c Dark Blue (111).** Mint N.H., choice centering, wide margins, stunning deep color and a superbly detailed impression on immaculate white paper, Extremely Fine Gem, a highly desirable and eye-appealing stamp, with 2021 P.F. certificate (XF-Superb 95), Scott \$500.00, Unitrade C\$900.00 E. 500-750



836



837



838

- 836 ★★ **1922, 5c Violet, Wet Printing (112).** Mint N.H., impeccably well-centered, wide margins all around, exceedingly fresh, with rich color in a dark shade on brilliantly fresh paper, Extremely Fine Gem, Scott \$110.00, Unitrade C\$180.00 E. 200-300
- 837 ★★ **1912, 7c Yellow Ocher (113).** Mint N.H., exceptionally wide and wonderfully balanced margins, attractive rich color, Extremely Fine Gem, ex Dr. Tang and Dr. Killien, with 2006 P.F. (XF-Superb 95) and 2016 Greene Foundation certificates, Scott \$130.00, Unitrade C\$270.00 E. 300-400
- 838 ★★ **1924, 7c Red Brown (114).** Mint N.H., flawless centering with uncharacteristically wide margins, stunning proof-like color and impression on immaculate white paper, Extremely Fine Gem in every regard, with 2020 P.F. certificate (Superb 98), Scott \$65.00, Unitrade C\$105.00 E. 200-300



839

- 839 ★★ **1912, 10c Deep Brown Purple (116).** Mint N.H., extraordinarily well-centered within the widest margins possible for this challenging stamp, intense color and impression on bright white paper

EXTREMELY FINE GEM. AMONG THE FINEST MINT NEVER-HINGED 10-CENT PLUM ADMIRALS AVAILABLE.

The 10c Plum is by far the most difficult of all the Admiral issues to find in gem quality.

With 2020 Greene and P.F. certificates (XF-Superb 95 Jumbo). The Philatelic Foundation rarely hands out "Jumbo" designations on Canadian stamps. Scott \$700.00. Unitrade C\$1,200.00 E. 1,500-2,000



840



841



842

- 840 ★★ **1922, 10c Blue, Dry Printing (117a).** Mint N.H., precise centering, incredibly wide margins all around, eye-arresting rich color on brilliant paper, Extremely Fine Gem, a stamp for the collector assembling a set of Admiral stamps in superb condition, ex "Crossings", with 2009 P.F. certificate (Superb 98), Scott \$110.00, Unitrade C\$210.00 E. 200-300
- 841 ★★ **1925, 10c Bister Brown (118).** Mint N.H., near perfect centering, wide margins, fresh color on bright paper, Extremely Fine Gem, with 2020 P.F. certificate (Superb 98), Scott \$120.00, Unitrade C\$180.00 E. 200-300
- 842 ★★ **1925, 20c Gray Green, Wet Printing (119d).** Mint N.H., extraordinarily wide and well-balanced margins, vivid color and well-incised impression, Extremely Fine Gem, a highly select stamp, with 2013 P.F. certificate (XF-Superb 95), Scott \$425.00, Unitrade C\$1,200.00 E. 400-500
- 843 ★★ **1925, 50c Black Brown, Dry Printing (120).** Mint N.H., remarkably well-centered, especially lavish margins all around, intensely rich color and a crisp impression on bright paper, Extremely Fine Gem, a superb stamp, ex "Crossings" and Dr. Killien, with 1994 Greene Foundation, 2009 and 2016 P.F. certificates (XF-Superb 95 Jumbo), Scott \$200.00, Unitrade C\$300.00 E. 300-400



843



- 844 ★★ **1923, \$1.00 Orange, Dry Printing (122).** Mint N.H., marvelously well-centered, extravagantly wide margins, brilliant color, Extremely Fine Gem, with 2020 Greene Foundation and P.F. certificates (Superb 98 Jumbo), Scott \$215.00, Unitrade C\$360.00 E. 300-400
- 845 ★★ **1913, 1c Dark Green, Coil (123).** Mint N.H., excellent centering, intense color and impression on bright paper, Extremely Fine Gem, with 2015 P.S.E. and 2016 P.F. certificates (both grading XF-Superb 95; SMQ \$700.00), Scott \$275.00, Unitrade C\$450.00 E. 300-400
- 846 ★★ **1913, 1c Dark Green, Coil (123).** Mint N.H. pair, uncharacteristically well-centered, dark color, Extremely Fine, with 2017 Greene Foundation certificate, Scott \$650.00, Unitrade C\$900.00 E. 300-400
- 847 ★★ **1913, 2c Carmine, Coil (124).** Mint N.H. pair, incredibly well-centered, extravagantly wide margins all around, bright color (noted as the Rose Carmine shade on the certificate), Extremely Fine Gem, pairs of this coil are rarely encountered in such choice quality, with 2019 Greene Foundation certificate, Scott \$650.00, Unitrade C\$900.00 E. 500-750

1917-43 ISSUES

- 848 ★★ **1917, 3c Confederation, Imperforate (135a).** Horizontal pair with sheet margin and partial arrow guide line at top, without gum as issued, deep color, Extremely Fine, ex "Highlands", with 2019 Greene Foundation certificate, Scott \$500.00, Unitrade C\$800.00 E. 200-300
- 849 ☒ **1927, 1c-5c Confederation (141-144).** Tied by St. Denis Street Montreal June 29, 1927 **first day** circular datestamps on local cover, Ecole Polytechnique corner card, cover with just the slightest bit of toning at left edge, otherwise Very Fine E. 200-300
- 850 ★★ **1927, 1c-12c Confederation, Imperforate (141a-145a).** Mint N.H. horizontal pairs, each with large margins, fresh colors, Very Fine and choice, Scott \$900.00, Unitrade C\$1,200.00 (Photo Ex/Website PDF) E. 400-500



851EX



852

- 851 ★★ **1927, 5c-20c Historical Issue, Imperforate (146a-148a).** Mint N.H. vertical pairs, large margins, brilliantly fresh, Very Fine and choice, Scott \$460.00, Unitrade C\$620.00(Photo Ex/Website PDF) E. 200-300
- 852 ☒ **1929, 50c Bluenose (158).** Used along with \$1.00 Mt. Cavell (177) and 5c U.P.U. (202) on **Italian Cruise of General Balbo flight cover**, tied by Montreal July 15, 1933 circular datestamps, sent to Chicago (July 16 backstamp), two flight labels on reverse, **signed by Balbo**, Very Fine, a scarce franking correctly paying the \$1.55 rate(Photo/Website PDF) E. 1,000-1,500



853EX

- 853 ★★ **1930, 12c-\$1.00 Pictorials, Imperforate (174a-177a).** Mint N.H. vertical pairs, large to extra-large margins all around, brilliant colors
EXTREMELY FINE. A CHOICE QUALITY MINT NEVER-HINGED SET OF THE 1930 ARCH-LEAF ISSUE HIGH VALUES IN IMPERFORATE PAIRS.
Only 75 pairs of each printed. Each with 2015 Greene Foundation certificate. Scott \$5,800.00. Unitrade C\$10,000.00.....(Photo Ex/Website PDF) E. 2,000-3,000



- 854 ★★ **1931, 10c Cartier, Imperforate (190a).** Mint N.H. horizontal pair, large margins, rich color, Very Fine, with 2018 Greene Foundation certificate, Scott \$750.00, Unitrade C\$1,300.00 ... E. 300-400
- 855 ★★ **1932, 1c-13c Definitives, Imperforate (195c-201a).** Complete set in horizontal (1c-8c) or vertical pairs (13c), Mint N.H., each with large margins and brilliant color, Very Fine, Scott \$3,450.00, Unitrade C\$5,950.00(Photo Ex/Website PDF) E. 1,000-1,500
- 856 ★★ **1933, 5c Parliament Buildings, Imperforate (202a).** Mint N.H. vertical pair, large margins, bright color on pristine paper, Very Fine and choice, with 2017 Greene Foundation certificate, Scott \$950.00, Unitrade C\$1,600.00 E. 400-500
- 857 ★★ **1933, 20c Grain Exhibition, Imperforate (203a).** Mint N.H. horizontal pair with sheet margin at right, rich color, Extremely Fine, with 2014 Greene Foundation certificate, Scott \$950.00, Unitrade C\$1,600.00 E. 400-500
- 858 ★★ **1934, 3c Cartier, Imperforate (208a).** Mint N.H. horizontal pair, large margins, wonderfully fresh, Extremely Fine, with 2014 Greene Foundation certificate, Scott \$1,150.00, Unitrade C\$1,600.00 E. 400-500
- 859 ★★ **1934, 10c Loyalists Statue, Imperforate (209a).** Mint N.H. vertical pair, large margins, exceedingly bright and fresh, Very Fine, only 50 pair produced, ex "Montclair", with 2014 Greene Foundation certificate, Scott \$2,250.00, Unitrade C\$3,500.00 E. 750-1,000
- 860 ★★ **1934, 2c Seal of New Brunswick, Imperforate (210a).** Mint N.H. horizontal pair, large margins all around, deeply rich color, Very Fine and choice, with 2014 Greene Foundation certificate, Scott \$1,050.00, Unitrade C\$1,485.50 E. 400-500



861EX

861 TC **1935, 1c-13c Silver Jubilee, Large Die Trial Color Proofs on India (211TC-216TC).** Die sunk on 152 x 227mm cards, close to the issued colors, each with pencil ms. "wrong color" on front or back, die number and Canadian Bank Note Co. imprint, fresh colors, 13c card with faint crease at top right

VERY FINE. AN ATTRACTIVE AND SELDOM OFFERED SET OF THE 1935 JUBILEE ISSUE IN LARGE DIE TRIAL COLOR PROOFS.

A highly desirable and exhibitable set for the 1935 Silver Jubilee specialist.
(Photo Ex/Website PDF) E. 1,500-2,000

862 ★★ **1935, 1c-13c Silver Jubilee, Imperforate (211a-216b).** Complete set in Mint N.H. horizontal (1c, 2c, 5c) or vertical (3c, 10c, 13c) pairs, large margins, bright and fresh throughout, Very Fine and choice set, Scott \$2,550.00, Unitrade C\$3,600.00
.....(Photo Ex/Website PDF) E. 750-1,000



862EX



863EX



863 P **1935, 1c-\$1.00 King George V Views, Large Die Proofs on India (217P1-227P1).** Each die sunk on 229 x 153mm card, 1c-13c in issued colors, 20c (red), 50c (violet), and \$1.00 (olive black) in trial colors and with pencil ms. "wrong color" on front or back, with die numbers, 3c and 10c-\$1.00 with Canadian Bank Note Co. imprint, strong rich colors

VERY FINE. A HANDSOME AND RARE SET OF THE 1935 KING GEORGE V VIEWS IN LARGE DIE PROOFS.

The first such set we have offered.(Photo Ex/Website PDF) E. 2,000-3,000

- 864 ★★ **1935, 1c-\$1.00 King George V Views, Imperforate (217c-227a).** Complete set in horizontal (1c-8c) or vertical (10c-\$1.00) pairs, each with **sheet margin** at right or left, 1c-8c with corner sheet margin, bright colors and paper

EXTREMELY FINE. A HIGHLY DESIRABLE AND CHOICE SET OF THE 1935 KING GEORGE V PICTORIALS IN MINT NEVER-HINGED SHEET-MARGIN IMPERFORATE PAIRS.

Scott \$4,225.00. Unitrade C\$5,850.00.....
.....(Photo Ex/Website PDF) E. 1,500-2,000



865EX



864EX

- 865 ★★ **1937, 1c-8c King George VI, Imperforate (231c-236a).** Complete set in Mint N.H. horizontal pairs, each with large margins all around, vibrant colors on fresh paper, Extremely Fine, Scott \$2,550.00, Unitrade C\$2,550.00
.....(Photo Ex/Website PDF) E. 750-1,000



866EX

- 866 ★★ **1938, 10c-\$1.00 Pictorials, Imperforate (241b-245b).** Complete set (including both 10c colors) in horizontal or vertical (10c) pairs, all except \$1.00 with **corner sheet margin**, wonderfully fresh

EXTREMELY FINE. AN ESPECIALLY CHOICE SET OF MINT NEVER-HINGED IMPERFORATE PAIRS OF THE 1938 PICTORIALS.

Scott \$4,750.00. Unitrade C\$7,125.00
.....(Photo Ex/Website PDF) E. 1,500-2,000



867EX

- 867 ★★ **1942-43, 1c- \$1.00 War Effort, Imperforate (249d-262a).** Complete set in Mint N.H. pairs, each with large even margins, marvelously bright and fresh throughout

EXTREMELY FINE. A BEAUTIFUL MINT NEVER-HINGED SET OF THE 1942-43 WAR EFFORT IN IMPERFORATE PAIRS.

No more than 50 sets can exist and few are found in this choice quality. Scott \$7,050.00. Unitrade C\$10,500.00
.....(Photo Ex/Website PDF) E. 2,000-3,000

BACK-OF-BOOK ISSUES



868



869



870

- 868 ★★ **1928, 5c Brown Olive, Air Post, Imperforate (C1a).** Mint N.H. horizontal pair, large margins, rich color, Very Fine, with 2019 Greene Foundation certificate, Scott \$390.00, Unitrade C\$525.00 E. 200-300
- 869 ★★ **1935, 6c Red Brown, Air Post, Imperforate (C5b).** Mint N.H. horizontal pair with **sheet margin** at left, brilliantly fresh, Extremely Fine, ex "Highlands", with 2019 Greene Foundation certificate, Scott \$900.00, Unitrade C\$1,200.00 E. 300-400
- 870 ★★ **1938, 6c Blue, Air Post, Imperforate (C6a).** Mint N.H. horizontal pair with **sheet margin** at left, rich color on pristine paper, Extremely Fine, with 2014 Greene Foundation certificate, Scott \$850.00, Unitrade C\$1,200.00 E. 300-400



871



872



873

- 871 ★★ **1942, 16c Bright Ultramarine, Air Post Special Delivery, Imperforate (CE1a).** Mint N.H. vertical pair, large even margins all around, immaculately fresh, Extremely Fine, ex "Highlands", with 2019 Greene Foundation certificate, Scott \$850.00, Unitrade C\$1,200.00 E. 300-400
- 872 ★★ **1898, 10c Blue Green, Special Delivery (E1).** Mint N.H., uncommonly well-centered and margined, deep color and razor-sharp impression on pristine white paper, Extremely Fine, with 2021 Greene Foundation certificate, Scott \$675.00, Unitrade C\$1,000.00 E. 300-400
- 873 ★★ **1932, 20c Henna Brown, Special Delivery, Imperforate (E5a).** Mint N.H. horizontal pair, large margins, rich color, Very Fine, with 2018 Greene Foundation certificate, Scott \$1,200.00, Unitrade C\$1,600.00 E. 400-500



- 874 ★★ **1935, 20c Dark Carmine, Special Delivery, Imperforate (E6a).** Mint N.H. vertical pair, large even margins all around, deep color, Extremely Fine, with 2017 Greene Foundation certificate, Scott \$1,000.00, Unitrade C\$1,400.00..... E. 300-400
- 875 ★★ **1939, 10c Dark Green, Special Delivery, Imperforate (E7a).** Mint N.H. horizontal pair, large to extra-large margins, rich color on bright paper, Extremely Fine, with 2021 Greene Foundation certificate, Scott \$1,000.00, Unitrade C\$1,400.00 E. 300-400
- 876 ★★ **1938, 20c Dark Carmine, Special Delivery, Imperforate (E8a).** Mint N.H. horizontal pair with **sheet margin** at left, deep color on bright fresh paper, Extremely Fine, with 2018 Greene Foundation certificate, Scott \$1,000.00, Unitrade C\$1,400.00 E. 300-400
- 877 ★★ **1942, 10c Green, Special Delivery, Imperforate (E10a).** Mint N.H. vertical pair, large even margins all around, wonderfully bright and fresh, Extremely Fine, with 2019 Greene Foundation certificate, Scott \$850.00, Unitrade C\$1,200.00 E. 300-400
- 878 ★★ **1888, 2c Rose Carmine, Registration (F1b).** Mint N.H., well-centered, especially “tall” margins, brilliant color in this distinctive shade (noted as “Deep Rose Carmine” on certificate), Extremely Fine, ex Pope, with 2013 Greene Foundation certificate, Scott \$1,100.00, Unitrade C\$1,500.00 E. 400-500
- 879 ★★ **1935, 1c-10c Dark Violet, Postage Due, Imperforate (J15a-J20a).** Complete set of the four values that come imperforate, Mint N.H. horizontal pairs, large even margins all around, deep color on bright paper, Extremely Fine set, scarce in this choice condition as Unitrade states “*most of the imperf pairs have slightly disturbed gum due to poor storage*”, only 100 pairs printed, Scott \$1,300.00, Unitrade C\$1,200.00(Photo Ex/Website PDF) E. 300-400
- 880 ★★ **1915, 1c Green, 2c Carmine, War Tax (MR1-MR2).** Mint N.H., each impeccably well-centered and with extraordinarily wide margins, outstanding colors, the 1c in a particularly dark shade, Extremely Fine Gems, not easy to acquire in this fabulous condition, 2c with 2019 P.F. certificate (Superb 98), Scott \$170.00, Unitrade C\$240.00 E. 300-400



- 881 ★★ **1915, 5c Blue, War Tax (Unitrade MR2B).** Mint N.H., beautifully centered with wide margins, deep luxuriant color and a superbly detailed impression on bright paper, Extremely Fine, an especially challenging stamp to find in this choice never-hinged condition, with 2009 P.F. certificate, Unitrade C\$1,600.00 E. 750-1,000
- 882 ★★ **1915, 20c Olive Green, War Tax (Unitrade MR2C).** Mint N.H., uncharacteristically well-centered, rich color, Very Fine, with 2015 Greene Foundation (when it had top selvage) and 2016 P.F. certificates, Unitrade C\$720.00 E. 200-300
- 883 ★★ **1916, 2c + 1c Carmine Coil, War Tax (MR5).** Mint N.H., marvelous centering, wide margins, radiant color, Extremely Fine Gem, this compound-perf coil is very difficult to find in such outstanding quality, with 2019 P.F. certificate (Superb 98), Scott \$172.50, Unitrade C\$240.00 E. 200-300
- 884 ★★ **1916, 2c+1c Carmine Coil, War Tax (MR6).** Mint N.H., choice centering with extra-wide margins, vibrant color, Extremely Fine Gem, with 2019 P.F. certificate (XF-Superb 95), Scott \$450.00, Unitrade C\$600.00 E. 300-400
- 885 ★★ **1916, 2c+1c Carmine Coil, War Tax (MR6).** Mint N.H. pair, outstanding centering, wide margins, brilliant color, Extremely Fine Gem, not an easy coil pair to find in this select quality, ex "Dr. Killien", Scott \$900.00, Unitrade C\$1,200.00 E. 400-500
- 886 ★★ **1916, 2c+1c Brown Coil, War Tax (MR7).** Mint N.H., perfectly centered with wide margins, deep color, Extremely Fine Gem, with 2019 P.F. certificate (Superb 98), Scott \$150.00, Unitrade C\$210.00 E. 200-300

THE SUPERB-QUALITY BALANCE OF THE LANZA CANADA COLLECTION

- 887 ★★ **The Lanza Balance of Mint Never-Hinged Canada.** Through 1952 in a Lindner hingeless album, pages are complete, though the earliest stamp present is the ½c Small Queen, since all of the stamps from the previous issues qualified as individual lots, there is a smattering of late 19th and early 20th Century stamps, one of the best areas is the Admiral coils stamps, which were collected in both singles and pairs, complete from Scott No. 235 to 320 (coils collected both as singles and pairs), solid Back-of-Book, the extremely high quality cannot be overstated, as Mr. Lanza was one of the most fastidious collectors we have ever encountered, insisting on only stamps with choice centering, large margins, brilliant colors, and unblemished original gum that is never hinged, he would constantly upgrade his stamps, pouring through auction catalogues and dealer's stocks to improve the quality of his collection, he would upgrade to a stamp that was just marginally better than the one he had, and sell off his "seconds", in fact he bought the balance of Dr. Chris Killien's Canada (Siegel Sale 1114, lot 195), and Dr. Killien was an equally demanding collector, though we notice Mr. Lanza even improved upon some of Dr. Killien's gem stamps, uniformly Mint N.H., Extremely Fine, 22 certificates accompany, among them seven P.F. certificates with high numeric grades, the perfect lot for someone desiring to start collecting Canada in only the finest quality, or for a current collector to upgrade the quality of their collection, Scott in excess of \$13,000.00. **(Website PDF)** E. 5,000-7,500

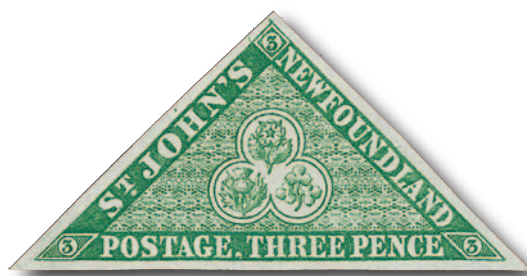
NEWFOUNDLAND



888



889



891

- 888 ★★ **1857, 1p Brown Violet (1; SG 1).** Mint N.H., large even margins all around, exceptionally bright and fresh with lovely rich color on pristine paper, Extremely Fine, with 2020 Greene Foundation certificate, Scott \$300.00, Unitrade C\$480.00
(Photo/Website PDF) E. 200-300

- 889 **1857, 1p Brown Violet (1; SG 1).** Large to extra-large margins all around, rich color and crisp impression, lightly cancelled, Extremely Fine Gem, actually a very difficult stamp to find in this superb used condition, with 2012 Greene Foundation certificate, Scott \$250.00, SG £250, Unitrade C\$350.00..... E. 200-300

- 890 **1857, 2p Scarlet Vermilion (2; SG 2; Unitrade 2i).** Line in bottom "2"s, mostly full margins, a little close at top right but easily clears, deep color and intense impression, neat grid cancel

VERY FINE. A MOST ATTRACTIVE USED EXAMPLE OF THE 1857 2-PENCE SCARLET VERMILION. IN MUCH NICER CONDITION THAN TYPICALLY FOUND.

The 2p value is notorious for its tight margins touching or cutting the design.

With 2015 Greene Foundation certificate. Scott \$7,000.00. SG £6,500. Unitrade C\$12,000.00
 E. 2,000-3,000



890

- 891 (★) **1857, 3p Green (3; SG 3).** Unused (no gum), uncommonly large and even margins all around, fresh color, fine impression, Extremely Fine Gem, quite challenging to find in this choice quality, ex "Highlands", with 1949 R.P.S. and 2019 Greene Foundation certificates, Scott \$1,000.00, SG £2,000, Unitrade C\$1,400.00 E. 400-500

- 892 **1857, 3p Green (3; SG 3).** Very large to full margins, attractive color, lightly cancelled, Very Fine, with 2017 Greene Foundation certificate, Scott \$575.00, SG £450, Unitrade C\$800.00 E. 200-300



892



893

- 893 (★) **1857, 4p Scarlet Vermilion (4; SG 4).** Unused (no gum), large margins all around, fresh color and well-incised impression on crisp paper

VERY FINE UNUSED EXAMPLE OF THE 1857 4-PENCE SCARLET VERMILION. A MAJOR NEWFOUNDLAND RARITY.

The majority of unused examples have small to touching margins and a few also have faults. This is a rare exception. Our census of Newfoundland No. 4, available at our website at <https://siegelauctions.com/census/newfoundland/scott/4>, records 17 unused, including 3 with original gum and 14 without gum.

Census no. 4-UNC-14. With 1987 and 2015 Greene Foundation certificates. Scott \$20,000.00. SG £15,000. Unitrade C\$20,000.00..... E. 5,000-7,500



894

- 894 **1857, 4p Scarlet Vermilion (4; SG 4).** Large to extra-large margins all around, radiant color and proof-like impression on bright paper, grid cancel

EXTREMELY FINE. AN OUTSTANDING USED EXAMPLE OF THE 1857 4-PENCE SCARLET VERMILION. ONE OF THE FINEST WE HAVE EVER OFFERED.

Signed E. Diena, Bloch, and Buhler. With 2007 Greene Foundation certificate. Scott \$4,500.00. SG £3,500. Unitrade C\$7,000.00..... E. 3,000-4,000

- 895 **1857, 6p Scarlet Vermilion (6; SG 6).** Huge margins all around, deep luxuriant color and deeply etched impression, neat grid cancel, light staining removed from the right margin (though this is not noted on most recent certificate)

EXTREMELY FINE APPEARANCE. AN EYE-CATCHING USED EXAMPLE OF THE 1857 6-PENCE SCARLET VERMILION.

1968 R.P.S. certificate no longer accompanies. With 1994 Holcombe, 1995 R.P.S., and clear 2007 Greene Foundation certificates. Scott \$5,000.00. SG £4,750. Unitrade C\$7,000.00 E. 2,000-3,000



895



896

- 896 (★) **1857, 6½p Scarlet Vermilion (7; SG 7).** Unused (no gum), enormous margins all around, dazzling color and razor-sharp impression on immaculate white paper

EXTREMELY FINE GEM. A STUNNING UNUSED EXAMPLE OF THE 1857 6½-PENCE SCARLET VERMILION IN A QUALITY UNLIKE ANY OTHER WE HAVE OFFERED.

The 6½p value typically comes with tight and/or touching margins. Those that do have margins are often found with faults to some degree. The Lanza copy, with its striking physical attributes, is one of the very finest obtainable.

With 2005 Sismondo and 2015 Greene Foundation certificates. Scott \$8,500.00. SG £4,500. Unitrade C\$7,000.00 E. 3,000-4,000

- 897 ★★ **1857, 8p Scarlet Vermilion (8; SG 8).** Mint N.H., huge margins including an enormous **sheet margin** at right, brilliant color, Extremely Fine Gem, a striking stamp, with 2017 Greene Foundation certificate, Scott \$900.00, Unitrade C\$1,800.00 E. 750-1,000



897



898

- 898 **1857, 8p Scarlet Vermilion (8; SG 8).** Large margins all around, fresh color, unusually light grid cancel, Extremely Fine, with 2010 Greene Foundation certificate, Scott \$600.00, SG £950, Unitrade C\$900.00.. E. 400-500

1857 ONE-SHILLING SCARLET VERMILION

AN ABSOLUTELY SUPERB USED EXAMPLE OF THIS CLASSIC RARITY



899

899 **1857, 1sh Scarlet Vermilion (9; SG 9).** Large margins on all four sides which is most unusual on this value, dazzling bright color and a deeply etched impression on fresh paper, neat grid cancel

EXTREMELY FINE GEM. A SPECTACULAR USED EXAMPLE OF THE 1857 ONE-SHILLING SCARLET VERMILION. IN A CONDITION THAT WOULD BE HARD TO IMPROVE UPON.

Nearly all copies of the One-shilling value have small (or no) margins and/or faults to some degree. This stamp is the very rare exception. It is certainly among the very finest quality examples available.

Ex Collier. With 1997 B.P.A. and 2009 Greene Foundation certificates. Scott \$9,500.00. SG £9,000. Unitrade C\$15,000.00 E. 7,500-10,000

1860 ONE-SHILLING ORANGE ON VERTICALLY LAID PAPER
(FORMERLY SCOTT 10)

A GEM EXAMPLE OF THIS IMPORTANT CLASSIC RARITY



900

- 900 ★ **1860, 1sh Orange, Vertically Laid Paper (formerly 10).** Large part original gum that is slightly disturbed, large and even margins all around, bright color, faint traces of gum staining in the top margin (not noted on most recent certificate)

VERY FINE. AN INCREDIBLY RARE EXAMPLE OF THE 1860 ONE-SHILLING ON VERTICALLY LAID PAPER. ONLY A TINY NUMBER EXIST.

For years the Scott Catalogue listed the One-Shilling on laid paper as No. 10. In fact, both accompanying certificates refer to it as Scott No. 10. At some point many specialists believed this was of proof status, and it was no longer listed as No. 10, but was instead footnoted after No. 15. Up until recently it was also listed as No. 10 in the Unitrade Catalogue. It is also footnoted in Stanley Gibbons.

We know of no census of this stamp, but the total number in existence is minute. Pratt believed only one block of six was made for proof purposes (the stamp offered here is from that block). Robson Lowe recorded one on horizontally laid paper.

Ex Lathrop, Pratt, Gilbert, and "Malibu". Scott \$27,500.00. SG £21,000. Unitrade C\$32,500.00 (2017) E. 10,000-15,000



901

- 901 ★ **1860, 2p Orange (11; SG 10).** Full original gum, lightly hinged, extravagantly large margins all around, brilliantly rich color, Extremely Fine Gem, ex King and Dr. Killien, with 2016 Greene Foundation certificate, Scott \$500.00 SG £600, Unitrade C\$600.00 E. 300-400

- 902 **1860, 2p Orange (11; SG 10).** Large margins, attractive color, grid cancel, Extremely Fine, not an easy stamp to find in this premium used condition, ex "Highlands", with 2019 Greene Foundation certificate, Scott \$450.00, SG £700, Unitrade C\$600.00 E. 300-400



902



903

- 903 **1860, 6p Orange (13; SG 14).** Unusually large and balanced margins all around, unobtrusive light grid cancel, Extremely Fine Gem, a particularly handsome example, 2020 Greene Foundation certificate, Scott \$1,100.00, SG £800, Unitrade C\$1,600.00 E. 400-500

1860 ONE-SHILLING ORANGE
AN INCOMPARABLE QUALITY USED EXAMPLE



904

904 **1860, 1sh Orange (15; SG 15).** Large to huge margins all around, the size of which are unheard of on the One-shilling value, brilliant rich color, clear impression, light oval grid cancel

EXTREMELY FINE GEM. AN INCREDIBLY CHOICE USED EXAMPLE OF THE 1860 ONE-SHILLING ORANGE, SCOTT NO. 15.

The One-shilling value of the 1860 Issue is notorious for having small or no margins. The Lanza copy, with its huge margins, bright color and unusually light cancel, has all of the attributes one would desire, but probably thought could not exist on a single stamp. The rarity of this stamp in this quality cannot be overstated.

Ex Collier. With 1995 B.P.A. and 2009 Greene Foundation certificates. Scott \$12,000.00. SG £12,000. Unitrade C\$18,000.00 E. 10,000-15,000



905

- 905 (★) **1861, 1p Reddish Brown (16; SG 16a).** Unused (no gum), full margins, gorgeous rich color and well-incised impression on crisp paper

VERY FINE AND CHOICE UNUSED EXAMPLE OF THE ONE-PENNY REDDISH BROWN ERROR OF COLOR. AN OFTEN MISIDENTIFIED NEWFOUNDLAND RARITY.

The 1861 1p Reddish Brown was prepared for use but never issued. It was printed in this Reddish Brown shade in error as it was meant for the 5p stamp instead. According to Pratt, only four sheets (480 stamps) were printed with only a small number known to have survived.

Our census, available at our website at <https://siegelauctions.com/census/newfoundland/scott/16>, records 29 copies.

Census no. 16-OG-08. Ex Dale-Lichtenstein. With 2005 and 2010 Greene Foundation certificates. Scott \$22,500.00. SG £12,500. Unitrade C\$16,000.00 E. 5,000-7,500



906



907



908

- 906 ★★ **1865, 2c Green, White paper (24; SG 31).** Mint N.H., unusually well-centered, rich color and crisp impression, Extremely Fine, nearly impossible to obtain in this choice certified Mint N.H. condition, with 2016 Greene Foundation certificate, Scott \$600.00, Unitrade C\$900.00 E. 500-750
- 907 ★ **1865, 5c Brown (25; SG 26).** Original gum, lightly hinged, exceptionally well-centered, extravagant margins all around, the size of which are almost never seen on this issue, intense color and impression, Extremely Fine Gem, ex "Crossings", with 1993 P.F. certificate, Scott \$750.00, SG £600, Unitrade C\$800.00 E. 750-1,000
- 908 ★★ **1868, 5c Black (26; SG 32).** Mint N.H., much better centering than typically encountered, deep impression on brilliant paper, Very Fine, certified Mint N.H. examples of the 1868 5c Black are very rare, with 2016 Greene Foundation certificate, Scott \$2,400.00, Unitrade C\$3,600.00 E. 1,000-1,500



909



910



911



912

- 909 ★★ **1865, 10c Black, White Paper (27; SG 32).** Mint N.H., wide margins, rich shade on fresh paper, Very Fine, another Newfoundland stamp from the Lanza collection that is rarely seen in premium Mint N.H. quality, with 2014 Greene Foundation certificate, Scott \$1,600.00, Unitrade C\$1,500.00 E. 500-750
- 910 ★★ **1865, 13c Orange (30; SG 29).** Mint N.H., beautifully centered, exceedingly wide margins, strong color, Extremely Fine Gem, the finest quality example of No. 30 we have offered, ex "AFAB", with 2022 Greene Foundation certificate, Scott \$750.00, Unitrade C\$900.00 E. 750-1,000
- 911 ★★ **1868, 1c Violet (32; SG 34).** Mint N.H., uncommonly well-centered, wide margins, strong rich color, Extremely Fine, with 20011 P.F. certificate, Scott \$400.00, Unitrade C\$700.00 E. 400-500
- 912 ★★ **1873, 3c Blue (34; SG 37).** Mint N.H., intensely rich color and a sharp on immaculate white paper, well-centered, Very Fine and choice, a highly desirable post office fresh example, ex Dr. Killien, with 2005 and 2016 Greene Foundation certificates, Scott \$1,200.00, Unitrade C\$3,000.00..... E. 750-1,000



913

- 913 ★★ **1876-79, 1c-5c Roulette (37-40; SG 40-43).** Mint N.H., each with much better centering than usually found (the 5c particularly so), rich colors throughout
EXTREMELY FINE. A HIGHLY DESIRABLE SET OF THE 1876-79 ROULETTES IN PREMIUM MINT NEVER-HINGED CONDITION.
It took Mr. Lanza years of patience to assemble such a choice set of this very challenging issue.
Each with 2008-2020 Greene Foundation certificate. 5c with additional 1997 Greene Foundation certificate. Scott \$3,025.00. Unitrade C\$6,400.00 E. 3,000-4,000



- 914 ★★ **1887, 3c Umber Brown (51; SG 52).** Mint N.H., choice centering, wide margins, deep color, Extremely Fine, with 2009 Greene Foundation certificate, Scott \$325.00, Unitrade C\$480.00 E. 200-300
- 915 ★★ **1880, 5c Pale Blue (53; SG 48).** Mint N.H., wide margins all around, fresh color, Extremely Fine, with 1995 and 2008 Greene Foundation certificates, Scott \$1,125.00, Unitrade C\$3,000.00 E. 1,000-1,500
- 916 ★★ **1887, 5c Dark Blue (54; SG 53).** Mint N.H., exceptionally wide margins all around, deep luxuriant color on brilliant paper, Extremely Fine Gem, with 2016 Greene Foundation certificate, Scott \$475.00, Unitrade C\$900.00 E. 400-500
- 917 ★★ **1880, 5c Bright Blue (55; SG 59a).** Mint N.H., almost perfect centering, Jumbo margins, rich color and excellent impression, Extremely Fine Gem, it would be hard to improve upon the quality of this stamp, with 2007 Greene Foundation certificate, Scott \$160.00, Unitrade C\$300.00 E. 300-400
- 918 ★★ **1887, 10c Black (59; SG 54).** Mint N.H., massive margins all around, crisp impression, Extremely Fine Gem, the largest margined Newfoundland No. 59 we have ever seen, with 2015 Greene Foundation certificate, Scott \$300.00, Unitrade C\$600.00 E. 750-1,000
- 919 E **1918, "TWO/2CENTS" Surcharge Essay on 60c Black (Unitrade 74-E1).** Original gum, lightly hinged, near perfect centering, rich color on pristine paper, Extremely Fine Gem, a rare essay in extraordinary quality, ex "Mount Pearl", with 2018 Greene Foundation certificate ("NH"), Unitrade C\$1,500.00 E. 750-1,000
- 920 ★ **1911, 8c-12c Guy Issue, Imperforate (99a-102a; SG 112 var-115 var).** Horizontal pairs, without gum as issued, large margins, Very Fine, each with 2014 or 2015 Greene Foundation certificate, Scott \$1,300.00, Unitrade C\$1,200.00 (Photo Ex/Website PDF) E. 400-500



921EX

- 921 ★田 **1919, 1c-36c Caribou, Imperforate (115a-126a; SG 130 var-141 var).** Each a left sheet-margin block of four with double border line, without gum as issued, fresh colors throughout, a few values with very minor natural paper bends (endemic to this issue)

EXTREMELY FINE, A LOVELY WELL-MATCHED SET OF THE 1919 CARIBOU SET IN IMPERFORATE BLOCKS OF FOUR.

Scott \$6,900.00. SG £8,400. Unitrade C\$8,400.00(Photo Ex/Website PDF) E. 2,000-3,000



922



923EX



925EX

- 922 ★★ **1920, 3c on 15c Scarlet, Type I Surcharge (128; SG 145).** Mint N.H., flawless centering, radiant color on fresh white paper, Extremely Fine Gem, with 2007 Greene Foundation certificate, Scott \$350.00, Unitrade C\$600.00 E. 300-400
- 923 ★ **1923-24, 1c-15c Pictorials, Imperforate (131b/142a; SG 149 var/162 var).** Set of eleven values (missing the 3c as do most sets) in right or left sheet-margin horizontal pairs, without gum as issued, strong colors, Extremely Fine, Scott \$2,685.00, Unitrade C\$3,275.00(Photo Ex/Website PDF) E. 500-750

- 924 P **1931, 1c-30c Re-engraved Pictorials, Die Proofs (172P-182P, SG 198P-208P).** In issued colors, sizes range from 40 x 33mm to 57 x 41mm, on watermarked paper, each with guide line at top or right, brilliant colors

VERY FINE AND SCARCE COMPLETE LARGE DIE PROOF SET OF THE 1931 PERKINS-BACON RE-ENGRAVED PICTORIALS .

The first such set we have offered.....

.....(Photo Ex/Website PDF) E. 2,000-3,000



924EX

- 925 ★★ **1938, 2c-7c Royal Family, Imperforate (245a-248a; SG 268b-271b).** Horizontal pairs, Mint N.H., large margins, Very Fine, an uncommonly fresh and pristine set, Scott \$700.00, Unitrade C\$1,200.00(Photo Ex/Website PDF) E. 300-400

NEWFOUNDLAND AIR POST ISSUES

1919 3-CENT "HAWKER" AIR POST

A GEM NEVER-HINGED EXAMPLE
PERHAPS THE FINEST IN EXISTENCE



926

926 ★★ **1919, 3c Red Brown, Hawker Air Post (C1; SG 142).** Mint N.H., manuscript initials "J.A.R." on reverse, excellent centering, extraordinarily fresh, with deep intense color

EXTREMELY FINE. AN IMMENSELY RARE MINT NEVER-HINGED 1919 HAWKER AIR POST IN OUTSTANDING CONDITION.

This flight famously ended with a controlled crash landing in the ocean after about 13 hours of flying. Postmaster J. A. Robinson of St. John's overprinted 200 stamps for the special flight. No more than 87 unused stamps can still exist, though the actual number of surviving copies is probably quite lower. In addition to these, 95 were used and 18 were defective and subsequently destroyed. Only a miniscule number exist today in Mint Never-Hinged condition.

With 1968 Robson Lowe, 1968 R.P.S., and 2012 Greene Foundation certificates when it was the top stamp in a vertical pair. 2012 Greene Foundation certificate as a single. Scott \$40,000.00, Unitrade C\$70,000.00 E. 20,000-30,000

1919 3-CENT "HAWKER" AIR POST

A CHOICE EXAMPLE OF THIS RARITY ON A FLOWN COVER



927

927 ✉ **1919, 3c Red Brown, Hawker Air Post (C1; SG 142).** Well-centered and with unusually deep intense color, tied by "St. John's Nfld. Apr. 12, 1919 2-PM" machine cancel on cover **to London, England**, manuscript "*by Aeroplane*"

VERY FINE. A PARTICULARLY CHOICE EXAMPLE OF THE 1919 HAWKER AIR POST STAMP ON FLOWN COVER.

This flight famously ended with a controlled crash landing in the ocean after about 13 hours of flying. Postmaster J. A. Robinson of St. John's overprinted 200 stamps for the special flight. 95 were used and only a fraction of those still exist on cover.

With 2002 B.P.A. and 2016 Greene Foundation certificates. Scott \$22,500.00. Unitrade C\$35,000.00..... E. 7,500-10,000



928

- 928 ★★ 1919, \$1.00 on 50c Scarlet, Air Post, Raised “E” of “ONE” (C2 var; SG 143 var). Mint N.H., bright color, Very Fine example of this unlisted but quite distinct variety, with 2015 Greene Foundation certificate..... E. 200-300



929

- 929 ★ 1921, 35c Red, Halifax Air Post, 2½mm Spacing, Period After “1921”, Inverted Overprint (C3c; SG 148c). Original gum, very lightly hinged, outstanding centered and with wide margins, deeply rich color
- EXTREMELY FINE. A HIGHLY SELECT EXAMPLE OF THIS AIR POST ERROR RARITY, SCOTT C3c. CERTAINLY ONE OF THE FINEST OF THE 28 PRINTED.
- Ex Graham Cooper. With 1992 R.P.S. and 2012 Greene Foundation certificates. Scott \$6,500.00. SG £6,000. Unitrade C\$10,000.00..... E. 3,000-4,000



930

- 930 ★★ 1921, 35c Red, Halifax Air Post, 1½mm Spacing (C3f; SG 148g). Mint N.H., excellent centering with wide margins, attractive color, mild gum bend, Extremely Fine, with clear 2013 Greene Foundation certificate, Scott \$750.00, Unitrade C\$900.00 E. 300-400

1927 60-CENT "DE PINEDO" AIR POST

A TRUE GEM ORIGINAL-GUM EXAMPLE OF THIS
SOUGHT-AFTER WORLDWIDE AIR POST RARITY



931

- 931 ★ **1927, 60c Black, De Pinedo Air Post (C4; SG 163).** Position 33 in the setting, original gum, lightly hinged, remarkably well-centered and with the widest margins possible, rich shade

EXTREMELY FINE. ONE OF THE FINEST CENTERED EXAMPLES OF THE RARE 1927 DE PINEDO AIR POST STAMP. ONE OF THE KEY AIR POST RARITIES OF THE WORLD WITH ONLY 33 UNUSED POSSIBLE OF THE 300 PRINTED.

Francesco de Pinedo was an Italian aristocrat who first served in the Italian military, and flew aerial reconnaissance missions in World War I. In 1924 he transferred to the newly-formed independent Italian Air Force. He soon requested a leave of absence, and flew 35,000 miles to Australia and the Far East before flying back. On his return he was appointed lieutenant colonel by Benito Mussolini for his achievement for Italian aviation.

In 1927 De Pinedo embarked on his next venture, with the backing of Mussolini and Italo Balbo, the minister of Italian aviation: a double crossing of the Atlantic Ocean. He selected a Savoia-Marchetti S.55 catamaran flying boat, named Santa Maria in honor of Columbus. He first flew down the west coast of Africa before crossing to Rio de Janeiro, where bad weather forced them down. After some time in South America, they headed north, landing in New Orleans on March 29. In early April they landed near Roosevelt Dam in Arizona, where a spectator threw a match into the water, igniting gasoline on the surface which consumed the plane in flames.

A substitute plane was shipped from Italy to New York. The ever-fastidious De Pinedo returned to New Orleans to restart his flight, going to Chicago, Montreal and Trepassy, Newfoundland, which was the final stop before recrossing the Atlantic.

De Pinedo departed Newfoundland for the Azores on May 30, 1927. Strong headwinds caused the Santa Maria II to run out of fuel and land in the ocean 200 miles short of the Azores. Towed by passing ships to the Azores, they refueled and then backtracked to the point of their ocean landing to resume their trip, traveling to Lisbon, Barcelona and finally Rome, where Mussolini promoted him to General. In 1933, De Pinedo was killed on takeoff when attempting a non-stop 6,000-mile flight from New York to Baghdad.

This stamp was issued for use on mail carried aboard the De Pinedo return flight to Europe. A total of 300 stamps were overprinted for this special flight. Of those, four were damaged and destroyed. 66 copies were presented to de Pinedo and government officials with between 225-255 used on covers. It is believed that only 33 unused are possible. Attesting to its rarity, we have offered only three other unused examples in the last 25 years (Passano Collection, Sale 778, "Scarsdale" Collection, Sale 1243, and the Porter Venn Collection, Sale 1259).

Signed Bloch and Holcombe. With 1973 Friedl, 1993 Holcombe, and 2014 Greene Foundation certificates. Scott \$45,000.00. SG £42,000. Unitrade C\$70,000.00. E. 20,000-30,000

1927 60-CENT "DE PINEDO" AIR POST

A MOST UNUSUAL USE OF THIS RARITY ON COVER



932

- 932 ✉ **1927, 60c Black, De Pinedo Air Post (C4; SG 163).** Well-centered and rich shade, tied by "St. Johns, N'Fld. May 21, 1927" machine cancel on local cover, Trepassy May 20, 1927 datestamp at bottom left and usual faint datestamp of May 20 at top, machine postmark at top left, St. John's receiver of May 25 at bottom left

VERY FINE. A HANDSOME AND UNUSUAL USE OF THE RARE 1927 DE PINEDO STAMP. ABOUT 100 STILL EXIST ON COVER.

This cover was postmarked at St. John's on May 21. All the mail carried on the actual flight was postmarked May 20. This specific cover was noted by V.G. Greene as being the only one known to him bearing the De Pinedo stamp but not the May 20 date postmark.

Signed Champion. With 1976 A. Diena and 2015 Greene Foundation certificates. Scott \$20,000.00. Unitrade C\$30,000.00 E. 7,500-10,000

1930 50-CENT ON 30-CENT "COLUMBIA" AIRPOST
A SUPERB NEVER-HINGED EXAMPLE



933

933 ★★ **1930, 50c on 36c Olive Green, Columbia Air Post (C5; SG 191).** Mint N.H., position 2, beautifully centered, deeply rich color and highly detailed impression

EXTREMELY FINE. A SUPERB MINT NEVER-HINGED EXAMPLE OF THE 1930 COLUMBIA AIR POST STAMP. ONE OF THE VERY FINEST KNOWN.

The Newfoundland government overprinted 300 copies of the 36c "Caribou" issue for use on this flight. Only 100 were actually used: 65 from St. John's and 35 from Harbour Grace. After flying 2,650 miles, the plane was forced down at Tresco Island, off the coast of England. The "Columbia" was able to finish the flight, landing at Croydon Airport on October 13.

With 1968 R.P.S., 2008 P.F., and 2009 Greene Foundation certificates. Scott \$13,000.00. Unitrade C\$24,000.00 E. 7,500-10,000

1930 50-CENT ON 30-CENT "COLUMBIA" AIRPOST

AN ESPECIALLY SCARCE FLOWN COVER
POSTED OUT OF HARBOUR GRACE



934

- 934 ☒ **1930, 50c on 36c Olive Green, Columbia Air Post (C5; SG 191).** Well-centered and with deeply rich color, tied by **Harbour Grace** Oct. 9, 1930 circular datestamp on cover to **Dumfries, Scotland**, ms. "Airmail via aeroplane Columbia." at top, cover with faint vertical bend and small repair to backflap (neither mentioned on certificate)

VERY FINE. A HIGHLY DESIRABLE EXAMPLE OF THE 1930 COLUMBIA AIR POST STAMP ON COVER. ESPECIALLY SCARCE POSTED FROM HARBOUR GRACE.

Signed A. Diena. With clear 2013 Greene Foundation certificate. Scott \$15,000.00.
Unitrade C\$18,000.00 E. 4,000-5,000



935EX

- 935 P **1931, 15c-\$1.00 Air Post, Die Proofs on Wove Paper (C6P-C8P).** In issued colors on unwatermarked paper, 15c and 50c with guideline, 15c with portion of die number at top right, wonderfully fresh, Extremely Fine and handsome set, ex "Highlands"(Photo Ex/Website PDF) E. 750-1,000



936EX

- 936 ★ **1931, 15c-\$1.00 Air Post, Unwatermarked, Imperforate (C6c-C8c; SG 192c-194c).** Horizontal or vertical pair, \$1.00 Mint N.H., other two unhinged, but 15c with slight gum flaking and 50c with small spot of gum missing (both catalogued as hinged), large margins, Very Fine, each with 2013 Greene Foundation certificate, Scott \$2,450.00, Unitrade C\$3,600.00 (Photo Ex/Website PDF) E. 750-1,000

- 937 ★★ **1932, \$1.50 on \$1.00 Blue, DO-X Air Post (C12; SG 221).** Mint N.H., choice centering, uncharacteristically wide margins, deep color on immaculate white paper, Extremely Fine, with 2007 Greene Foundation certificate, Scott \$350.00, Unitrade C\$800.00..... E. 200-300



937

1932 \$1.50 ON \$1.00 DORNIER DO-X WITH INVERTED SURCHARGE

A GEM EXAMPLE OF THIS RARE AIR POST INVERT ERROR



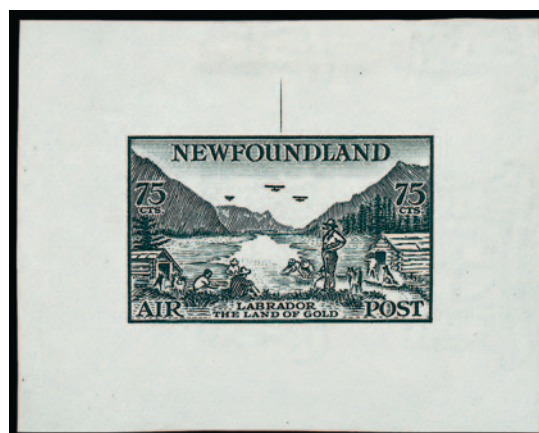
938

938 ★★ 1932, \$1.50 on \$1.00 Dornier DO-X, Inverted Surcharge (C12a; SG 221a). Mint N.H.. impeccable centering, remarkably fresh, with rich color and crisp impression on immaculate white paper, the gum is also very fresh, without any notations or handstamps

EXTREMELY FINE. AN OUTSTANDING MINT NEVER-HINGED EXAMPLE OF THE DORNIER DO-X AIR POST WITH INVERTED SURCHARGE. THIS IS PERHAPS THE FINEST OF THE SMALL NUMBER EXTANT.

It is believed only 40 stamps (ten sheets of four) received the inverted surcharge and none were used on the flight (there are no recorded used or on cover). While we are aware of a few others in Mint N.H. condition, none of these possess the centering or freshness of the Lanza copy.

With 2010 Greene Foundation certificate. Scott \$25,000.00. Unitrade C\$60,000.00. The discrepancy in catalogue value can be attributed to the fact that Scott has the Mint N.H. price only 20% higher than hinged, while Unitrade assigns a 100% premium, the latter reflecting more on the scarcity and desirability of never-hinged examples..... E. 15,000-20,000



939EX

- 939 P **1933, 5c-75c Air Post, Trial Color Die Proofs in Black (C13P-C17P).** Each approximately 58 x 46mm, on watermarked paper with guide line at top

VERY FINE. A BEAUTIFUL AND RARE SET OF THE 1933 AIR POST SET IN BLACK TRIAL COLOR PROOFS.

Ex Cyril Harmer and "Highlands".....(Photo Ex/Website PDF) E. 1,500-2,000



940EX

- 940 ★ **1933, 5c-75c Air Post, Imperforate (C13a-C17a).** Horizontal pairs with right or left sheet margin, original gum, lightly hinged, Extremely Fine, Scott \$2,530.00, Unitrade C\$3,000.00(Photo Ex/Website PDF) E. 750-1,000



941EX

- 941 ★田 **1933, 5c-75c Air Post, Imperforate (C13a-C17a).** Corner sheet-margin blocks of four, original gum, lightly hinged, exceedingly fresh

EXTREMELY FINE. A STRIKING SET OF IMPERFORATE CORNER-MARGIN BLOCKS OF FOUR OF THE 1933 AIR POST.

Catalogue values as two sets of pairs. Scott \$5,060.00. Unitrade C\$6,000.00(Photo Ex/Website PDF) E. 1,500-2,000



944EX

- 942 ★★ 1933, \$4.50 Balbo Air Post, Perf 13.8 (C18b; SG 235 var). Mint N.H., wide and exceptionally well-balanced margins all around, wonderfully fresh, Extremely Fine Gem, signed A. Diena and with 2007 Greene Foundation certificate (old Unitrade C18iv designation), Scott \$360.00 (as C18), Unitrade C\$1,000.00 E. 300-400
- 943 ☒ 1933, \$4.50 Balbo Air Post (C18). Position 3, exceptionally well-centered and with rich color, tied by "St. John's, Newf'd, 26 Jul. 33" circular datestamp on registered first day flown cover to Rome, Italian and Newfoundland backstamps, Extremely Fine, Scott \$800.00, Unitrade C\$1,100.00(Photo/Website PDF) E. 300-4,000
- 944 ☒ Air Post Cover Group. No. C3 on cover to Philadelphia, No. C12 on May 20 cover to England, and set of Nos. C13-C17 on four first day covers, Fine-Very Fine, first two with 2015 Greene Foundation certificates(Photo Ex/Website PDF) E. 300-400

THE EXTRAORDINARY HIGH-QUALITY BALANCES OF
THE LANZA NEWFOUNDLAND COLLECTION

- 945 ★★ **The Lanza Balance of Mint Never-Hinged Newfoundland.** In a Lindner hingeless album, six 1860-81 imperforate stamps, several from the 1865-80 issues, and very comprehensive from 1887 onward, lacking the rarities and a few scattered stamps for completion, similar to his Canada, Mr. Lanza would constantly upgrade if he found a stamp in superior condition to what he already had, and also like his Canada, he bought the balance of Dr. Killien's 20th Century Newfoundland (Siegel Sale 1114, lot 328), which contained only gem Mint N.H. stamps, so between what he collected prior to the Killien sale, then upgrading from his Killien purchase, and still upgrading more afterwards, it is safe to say this is one of the finest quality Newfoundland balances to ever be offered at auction, 23 Greene Foundation certificates accompany, Scott about \$11,000.00
.....(Website PDF) E. 4,000-5,000
- 946 **The Lanza Balance of Used Newfoundland.** Most is made up of the balance of the "Scarsdale" Newfoundland Mr. Lanza purchased (Siegel Sale 1243, lot 781), which is primarily late 19th and early 20th century sets, plus Air Posts and Postage Dues, also added to that is No. 12A with a Greene Foundation certificate, exceptional quality throughout, Very Fine-Extremely Fine, much more difficult to assemble these sets in choice used condition than Mint N.H., Scott over \$2,400.00..(Website PDF) E. 750-1,000

END OF SALE — THANK YOU

Live and Absentee Internet Bidding at Siegel

ALL INTERNET BIDDING IS NOW HANDLED DIRECTLY FROM THE SIEGEL WEBSITE

**REGISTERED BIDDERS MAY LEAVE BIDS IN ADVANCE OF THE SALE
AND BID LIVE DURING THE AUCTION**

DOWNLOAD THE SIEGEL APP FROM THE APPLE OR GOOGLE PLAY STORES

This step-by-step guide will instruct you how to register and use the bidding interface.

Start by following the simple steps to become a registered internet bidder.

Once you have been approved for bidding, you can leave bids in advance of the sale, listen to the auction and place bids live with the click of a mouse.

Registering with Siegel Auction Galleries

To bid, you must be registered and approved by Siegel.

To decide what you need to do, choose the description below that best fits you.



**I've already registered with Siegel and
have been approved by Siegel for internet bidding**

I'm a Siegel client, but I'm not registered to bid live

Go to **bid.siegelauctions.com** and click on **Login** at the top. Then click on the link for **Sign Up Now**. We will match your new signup to your existing account.

I want to become a Siegel client and bid in auctions

Go to **bid.siegelauctions.com** and click on **Login** at the top. Then click on the link for **Sign Up Now**. You will need to register and provide trade and banking references.

Internet bidding works by allowing registered bidders to observe and place bids, either before the sale or in real-time during the auction.

Live Internet Bidding will work with any browser on both PC and Mac operating systems, or with our app..

Before bidding by internet for the first time, we recommend observing an auction in progress. This will help you develop a feel for the sale tempo and bidding interface.

Log in and participate in the auction at **bid.siegelauctions.com**

When you're logged on as an internet bidder, the bidding interface shows a photo and description of the lot, the current bid (and your bidding status), options for placing competitive bids and buttons with bid increments.

- After you click on a bid amount, the auctioneer is immediately notified of your bid.
- Retracting a bid is not acceptable, so please bid carefully.
- You can track prior realizations from the bidding screen.



"System Down" or "Lost Connection" events do occasionally happen.

If you have any problems with Live Internet Bidding please call 212-753-6421 for immediate assistance.



BIDS

Use this form to submit absentee bids
or to confirm telephone bids

Sale 1281

March 30, 2023

PADDLE #

1

Please provide the following information:

NAME

ADDRESS

CITY/STATE/ZIP

PHONE MOBILE

EMAIL

2

Have you purchased from us in the past 5 years? ☐ Yes (please go to Section 3)
☐ No (references required below)

STAMP FIRM PHONE

STAMP FIRM PHONE

Please submit references at least **2 business days** before the sale. Bids from new clients will not be executed if satisfactory references are not received in time to be contacted.

3

- Enter the lot number and your corresponding maximum bid in the space below
- Use whole dollar amounts and bid according to the increments (see back of form)
- Bids do not include the **18% Buyer's Premium**, taxes, duty or shipping charges
- Absentee bids will advance at one increment over the next highest competing bid
- "Plus", "Break Tie" or "Buy" bids will not be executed
- Indicate any "Or" bids between lot number/bid entries and bracket your choices
- If you wish to limit the total amount of your bids, follow the instructions below

Lot #	Bid \$	Lot #	Bid \$	Lot #	Bid \$

☐ **Limit Bids:** Check this box if you wish to limit the total hammer price of your bids (excluding 18% Buyer's Premium, taxes, duty and shipping costs). Your bids will be executed until your bidding limit has been reached. The total amount you wish to bid is \$

4

By signing this form, you agree to all of the Conditions of Sale printed in the sale catalogue (printed and digital), including but not limited to a) payment in the manner demanded by the Siegel firm, and b) payment of the 18% Buyer's Premium, any sales tax or customs duty, shipping costs, late charges and

other prescribed charges. You agree that your bids will be executed as a courtesy by Siegel, but you waive the right to make any claim against Siegel or its employees arising from these bids or your participation in the sale. You agree to honor all bids as submitted, regardless of any errors or omissions.

SIGNED DATE

Mail the signed form to Siegel Bid Department, 21 West 38th St., 7th Floor, New York, NY 10018
or email to stamps@siegelauctions.com



Additional Bids

Sale 1281

March 30, 2023

PADDLE #

Lot #	Bid \$	Lot #	Bid \$	Lot #	Bid \$

Shipping & Insurance

We will be pleased to arrange for shipping and transit insurance for purchases in this sale, except for lots marked or announced as "floor sale only." To expedite billing and delivery to hundreds of buyers in each sale, we use standard charges for postage and insurance under our policy. These charges are based on the package weight and mailing requirements, according to the schedule shown here. Our standard charges do not include a fee for our services, and they may be slightly more or less than the actual postage or Fedex fee. We ask all buyers to remit the invoiced amount for shipping and insurance.

Transit insurance is provided in all cases, except when the buyer has furnished us with documentation that insurance is effective under the buyer's own policy.

There will be no added insurance charge for shipments of less than \$75,000 value. Shipments valued in excess of \$75,000 may require supplemental insurance and/or special courier service, the estimated cost of which will be furnished to the buyer prior to shipment. If the buyer refuses to pay the estimated charges or furnish proof of self-insured coverage, the buyer will be responsible for picking up the lots at our office and any resulting sales tax.

Standard Shipping Charges

Weight Class	Shipping Method	Charge
Up to 2 lbs.	Fedex Envelope	\$25
Over 2 lbs.	Fedex Box	\$35 - \$50*
Outside US	Fedex	\$50 - \$100**
Bulky Lots	Fedex Ground or Express	By weight

* Up to \$75,000 value and up to 5 lbs; additional charge may apply to packages exceeding limits

** Buyers outside United States are liable for any applicable customs duty and clearance charges. An accurate declaration of contents and value will be made on all packages and import/export documents. **Siegel may refuse to ship lots to certain countries with a high risk factor.**

2/2015

Bidding Increments

The auctioneer may regulate the bidding at his discretion. However, to assist absentee bidders in establishing their maximum bids, the increments shown here will be used in most cases. We recommend that written bids conform to these increments—bids that do not will be reduced accordingly.

Bid	Increment	Bid	Increment
Up to \$200	\$10	\$7,000-20,000	\$500
\$200-500	\$25	\$20,000-30,000	\$1,000
\$500-1,000	\$50	\$30,000-70,000	\$2,500
\$1,000-3,000	\$100	\$70,000-140,000	\$5,000
\$3,000-7,000	\$250	\$140,000-300,000	\$10,000