

THE JEFFREY M. FORSTER COLLECTION

The 1869 Pictorial Issue Used in International Mails

SALE 1282 • TUESDAY, APRIL 18, 2023

Robert A. Siegel
AUCTION GALLERIES, INC.

THE JEFFREY M. FORSTER COLLECTION

The 1869 Pictorial Issue Used in International Mails



SALE 1282

Offered at unreserved public auction

TUESDAY, APRIL 18, 2023, AT 1:30 P.M. (LOTS 1001-1209)

All lots sold subject to **18% buyer's premium** and applicable sales tax or customs duty

Please carefully read the **Conditions of Sale** before bidding

Presale viewing by appointment only

Robert A. Siegel

AUCTION GALLERIES, INC.

21 WEST 38TH STREET, 7TH FLOOR, NEW YORK, N.Y. 10018

Phone (212) 753-6421 • Email: stamps@siegelauctions.com

Catalogues, internet bidding, resources, archives and the Siegel Encyclopedia at
siegelauctions.com



Robert A. Siegel

AUCTION GALLERIES, INC.

21 WEST 38TH STREET, 7TH FLOOR, NEW YORK, N.Y. 10018

Phone (212) 753-6421 • Email: stamps@siegelauctions.com

siegelauctions.com



Scott R. Trepel
President
strepel
[@siegelauctions.com](mailto:strepel@siegelauctions.com)



John P. Zuckerman
Senior Vice President
jzuckerman
[@siegelauctions.com](mailto:jzuckerman@siegelauctions.com)



Corey Long
Senior Vice President
clong
[@siegelauctions.com](mailto:clong@siegelauctions.com)

Siegel International
Dallas (214) 754-5991



Charles F. Shreve
Director, Siegel International
charles
[@siegelauctions.com](mailto:charles@siegelauctions.com)



Samantha Aragon
VP, Financial
samantha
[@siegelauctions.com](mailto:samantha@siegelauctions.com)



Emily Singleton
VP, Operations
esingleton
[@siegelauctions.com](mailto:esingleton@siegelauctions.com)



Andrea Moreno
Operations
andrea
[@siegelauctions.com](mailto:andrea@siegelauctions.com)



Alice Nemoto
Operations Assistant
anemoto
[@siegelauctions.com](mailto:anemoto@siegelauctions.com)



Andrew Titley
VP, Siegel International
andrew
[@siegelauctions.com](mailto:andrew@siegelauctions.com)



Chris Anderson
International Specialist
chris
[@siegelauctions.com](mailto:chris@siegelauctions.com)

Information for Bidders

Bidding

The following means are available for placing bids:

- 1) **Public Attendance:** Attendance is now permitted for fully vaccinated individuals and for unvaccinated individuals who follow all guidelines to prevent the spread of COVID-19. Live bidding will also be facilitated by mail, email, phone or internet.
- 2) **Live Internet Bidding:** Instructions for participating as a Live Internet Bidder are provided on the page opposite.
- 3) **Phone Bidding:** Bidders can be connected to the sale by phone and bid through a member of staff. Requests for phone bidding are subject to approval (please contact our office at least 24 hours before the sale). A signed Bid Form is required.
- 4) **Absentee Bids:** All bids received in advance of the sale, either by mail, fax, phone, email or internet, are Absentee Bids, which instruct the auctioneer to bid up to a specific amount on one or more lots in the sale. Absentee Bids sent by phone, fax or email should arrive at least one hour prior to the start of the sale session. Bids entered through Live Internet Bidding will be visible to the auctioneer during the sale. Written bids should be entered legibly on the Bid Form in the sale catalogue. Email and internet bids should be carefully typed and double-checked. All new bidders must provide references.

Presale Viewing by Appointment Only

To prevent the spread of COVID-19, presale viewing will be permitted for fully vaccinated individuals or for unvaccinated individuals who agree to follow all protective measures. To make an appointment and receive instructions, please contact us at (212) 753-6421 or by email. We reserve the right to refuse, cancel or postpone a request or appointment.

Expert Certification

Individual items offered without a PF or PSE certificate dated within the past 5 years may be purchased subject to certification of genuineness and our description. **Please refer to the Conditions of Sale and Grading Terms for policies governing certification.**

Shipping and Delivery

Procedures and charges for shipping lots are printed on the back of the Bid Form. **Bidders are responsible for all prescribed shipping charges and any applicable sales tax or customs duties.**

Price Realized

Prices realized are sent with each invoice. Bidders with email will receive a Bid Results report after the sale. Session results are posted immediately to siegelauctions.com

Live and Absentee Internet Bidding at Siegel

ALL INTERNET BIDDING IS NOW HANDLED DIRECTLY FROM THE SIEGEL WEBSITE

**REGISTERED BIDDERS MAY LEAVE BIDS IN ADVANCE OF THE SALE
AND BID LIVE DURING THE AUCTION**

DOWNLOAD THE SIEGEL APP FROM THE APPLE OR GOOGLE PLAY STORES

This step-by-step guide will instruct you how to register and use the bidding interface.

Start by following the simple steps to become a registered internet bidder.

Once you have been approved for bidding, you can leave bids in advance of the sale, listen to the auction and place bids live with the click of a mouse.

Registering with Siegel Auction Galleries

To bid, you must be registered and approved by Siegel.

To decide what you need to do, choose the description below that best fits you.



**I've already registered with Siegel and
have been approved by Siegel for internet bidding**

I'm a Siegel client, but I'm not registered to bid live
Go to bid.siegelauctions.com and click on **Login** at the top. Then click on the link for **Sign Up Now**. We will match your new signup to your existing account.

I want to become a Siegel client and bid in auctions
Go to bid.siegelauctions.com and click on **Login** at the top. Then click on the link for **Sign Up Now**. You will need to register and provide trade and banking references.

Internet bidding works by allowing registered bidders to observe and place bids, either before the sale or in real-time during the auction.

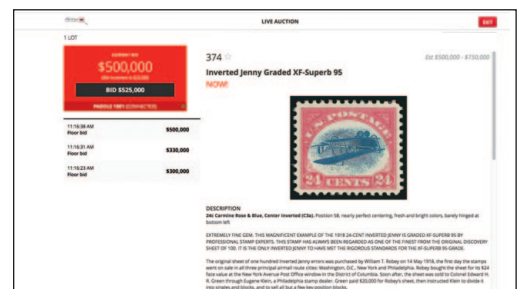
Live Internet Bidding will work with any browser on both PC and Mac operating systems, or with our app..

Before bidding by internet for the first time, we recommend observing an auction in progress. This will help you develop a feel for the sale tempo and bidding interface.

Log in and participate in the auction at bid.siegelauctions.com

When you're logged on as an internet bidder, the bidding interface shows a photo and description of the lot, the current bid (and your bidding status), options for placing competitive bids and buttons with bid increments.

- After you click on a bid amount, the auctioneer is immediately notified of your bid.
- Retracting a bid is not acceptable, so please bid carefully.
- You can track prior realizations from the bidding screen.



"System Down" or "Lost Connection" events do occasionally happen.

If you have any problems with Live Internet Bidding please call 212-753-6421 for immediate assistance.

Conditions of Sale (please read carefully before bidding)

THE PROPERTY IN THIS CATALOGUE WILL BE OFFERED AT PUBLIC AUCTION BY ROBERT A. SIEGEL AUCTION GALLERIES, INC. ("GALLERIES") ON BEHALF OF VARIOUS CONSIGNORS AND ITSELF OR AFFILIATED COMPANIES. BY BIDDING ON ANY LOT, WHETHER DIRECTLY OR THROUGH A THIRD PARTY, IN PERSON, BY TELEPHONE, FACSIMILE, INTERNET OR BY ANY OTHER MEANS, THE BIDDER ACKNOWLEDGES AND AGREES TO ALL OF THE FOLLOWING CONDITIONS OF SALE.

1. The highest bidder acknowledged by the auctioneer shall be the buyer. The term "final bid" means the last bid acknowledged by the auctioneer, which is normally the highest bid offered. **The purchase price payable by the buyer will be the sum of the final bid and a commission of 18% of the final bid ("buyer's premium"), together with any sales tax, use tax or customs duties due on the sale.**

2. The auctioneer has the right to reject any bid, to advance the bidding at his discretion and, in the event of a dispute, to determine the successful bidder, to continue the bidding or to reoffer and resell the lot in dispute. The Galleries' record of the final sale shall be conclusive.

3. All bids are per numbered lot in the catalogue unless otherwise announced by the auctioneer at the time of sale. The right is reserved to group two or more lots, to withdraw any lot or lots from the sale, or to act on behalf of the seller. The Galleries will execute bidding instructions on behalf of clients, but will not be responsible for the failure to execute such bids or for any errors in the execution of such bids.

4. **Lots with numbers followed by the symbol ° are offered subject to a confidential minimum bid ("reserve"), below which the lot will not be sold. The absence of the symbol ° means that the lot is offered without a reserve. If there is no reserve, the auctioneer has sole discretion to establish a minimum opening bid and may refuse an offer of less than half of the published estimate. Any lot that does not reach its reserve or opening bid requested by the auctioneer will be announced as "passed" and excluded from the prices realized lists after the sale. The Galleries may have a direct or indirect ownership interest in any or all lots in the sale resulting from an advance of monies or goods-in-trade or a guarantee of minimum net proceeds made by the Galleries to the seller.**

5. Subject to the exclusions listed in 5(A), the Galleries will accept the return of lots which, subject to the Galleries' sole judgment, have been misidentified or which have obvious faults that were present when the lot was in the Galleries' custody, but not so noted in the lot description. **All disputed lots must be received by the Galleries intact with the original packing material within 5 days of delivery to the buyer but no later than 30 days from the sale date. (5A) EXCLUSIONS:** The following lots may not be returned for any reason, or may not be returned for the reasons stated: (i) lots containing 5 or more items; (ii) lots from buyers who registered for the pre-sale exhibition or received lots by postal viewing, thereby having had the opportunity to inspect them before the sale; (iii) any lot described with "faults," "defects" or a specific fault may not be returned because of any secondary fault; (iv) photographed lots may not be returned because of centering, margins, short/nibbed perforations or other factors shown in the photos; (v) the color of the item does not match the color photo in the sale catalogue or website listing; (vi) the description contains inaccurate information about the quantity known or reported; or (vii) a certification service grades a stamp lower than the grade stated in the description or on an accompanying certificate.

6. Successful bidders, unless they have established credit with the Galleries prior to the sale, must make full payment in cleared funds before the lots will be delivered. Buyers not known to the Galleries must make payment in full within 3 days from the date of sale. **The Galleries retains the right to demand a cash deposit from anyone prior to bidder registration and/or to demand payment at the time the lot is knocked down, for any reason whatsoever.** In the event that any buyer refuses or fails to make payment in cash for any lot at the time it is knocked down to him, the auctioneer reserves the right to reoffer the lot immediately for sale to the highest bidder. **Credit cards (Visa, Mastercard and Discover only) can be accepted as payment, but will be subject to a 3% non-refundable Convenience Fee, which will be added to the total of the entire invoice (including hammer price, buyer's premium, shipping and transit insurance charges and any applicable taxes). The buyer waives the right to dispute all credit card charges.**

7. If the purchase price has not been paid within the time limit specified above, nor lots taken up within 7 days from the date of sale, the lots may be resold by whatever means deemed appropriate by the Galleries, and any loss incurred from resale will be charged to the defaulting buyer, and/or the Galleries may seek any other remedy prescribed by law to enforce payment. **Any account more than 30 days in arrears will be subject to a late payment charge of 1½% per month as long as the account remains in arrears. Any expenses incurred in securing payment from delinquent accounts will be charged to the defaulter.** A fee of \$250.00 will be charged for a check returned for insufficient funds.

8. All lots are sold as genuine. **Any lot accompanied by a certificate issued by The Philatelic Foundation or by Professional Stamp Experts within 5 years of the sale date is sold "as is" and in accordance with the description on the certificate. Such lots may not be returned for any reason, including but not limited to a contrary certificate of opinion or change in grade.** Buyers may request a certificate for a lot containing not more than one item, which does not have a P.F. or P.S.E. certificate (dated as above), provided that the following conditions are met: (i) the purchase price must be paid in full, (ii) if submitted by the buyer, the lot must be submitted to an acceptable expertizing service with a properly executed application form within 21 days of the sale, (iii) a copy of the application form must be given to the Galleries, (iv) the Galleries retains the right to resubmit the item for reconsideration, without time limit or other restrictions, for the purpose of obtaining a satisfactory opinion, (v) lots submitted for certification will be considered cleared 90 days from the date of sale, whether or not a certificate has been issued, unless the Galleries issues written approval of a further extension of return privileges, and (vi) in the event the lot is determined to be misidentified or misdescribed, pursuant to 5 and 5(A) of these Conditions, the Galleries will issue a refund to the buyer for the full purchase price and actual certification fees, but the reimbursement for certificate fees (and related costs) shall not exceed 10% of the hammer price of the lot. **Changes to a grade by the same certification service or a different grade from another certification service are not grounds for returning a lot.**

9. Until paid for in full, all lots remain the property of the Galleries on behalf of the seller.

10. Agents executing bids on behalf of clients may also be held responsible for all purchases made on behalf of clients, unless otherwise arranged prior to the sale.

11. **The buyer assumes all risk for delivery of purchased lots and agrees to pay for prescribed shipping costs. Buyers who receive lots in the U.S. are obligated to pay whatever sales tax or compensating use tax might be due, at any time, and buyers outside the U.S. are responsible for all customs duties.**

12. **The bidder consents that any action or proceeding against it may be commenced and maintained in any court within the State of New York or in the United States District Court for the Southern District of New York, that the courts of the State of New York and United States District Court for the Southern District of New York shall have jurisdiction with respect to the subject matter hereof and the person of the bidder. The bidder agrees not to assert any defense to any action or proceeding initiated by Galleries based upon improper venue or inconvenient forum. The bidder agrees that any action brought by the bidder shall be commenced and maintained only in a Federal Court in the United States District Court for the Southern District of New York or the State Court in the county in which Galleries has its principal place of business in New York. The bidder agrees not to use a public conflict resolution service and not to use any form of social media to publish comments or information about the Galleries and its employees which might harm the Galleries' reputation or business. These Conditions of Sale shall be governed by and construed in accordance with the substantive laws of the State of New York, and shall constitute an agreement that shall be binding on the parties, and their respective heirs, administrators, distributees, successors and assignees.**

Revised 6/2022

Grades, Abbreviations and Values Used in Descriptions

Grades and Centering

Our descriptions contain detailed information and observations about each item's condition. We have also assigned grades to stamps and covers, which reflect our subjective assessment. For stamps, the margin width, centering and gum are described and graded according to generally accepted standards (an approximate correlation to numeric grades is provided at right). Although we believe our grades are accurate, they are not always exactly aligned with third-party grading terms or standards for all issues. **A lot may not be returned because a certification service grades a stamp lower than the grade stated in the description. Information from the P.S.E. Stamp Market Quarterly and P.S.E. Population ReportSM is the most current available, but lots may not be returned due to errors or changes in statistics or data.**

Extremely Fine Gem (90-100): The term "Gem" describes condition that is the finest possible for the issue. This term is equivalent to "Superb" used by grading services.







Extremely Fine (80-90): Exceptionally large/wide margins or near perfect centering.

Very Fine (70-85): Normal-size margins for the issue and well-centered with the design a bit closer to one side. "Very Fine and choice" applies to stamps that have desirable traits such as rich color, sharp impression, freshness or clarity of cancel.

Fine (60-70): Smaller than usual margins or noticeably off center. Pre-1890 issues may have the design touched in places.

Very Good (below 60): Attractive appearance, but margins or perforations cut into the design.

Guide to Gum Condition

Gum Categories:	MINT N.H.	ORIGINAL GUM (O.G.)				NO GUM
	 Mint Never Hinged <i>Free from any disturbance</i>	 Lightly Hinged <i>Faint impression of a removed hinge over a small area</i>	 Hinge Mark or Remnant <i>Prominent hinged spot with part or all of the hinge remaining</i>	 Part o.g. <i>Approximately half or more of the gum intact</i>	 Small part o.g. <i>Approximately less than half of the gum intact</i>	 No gum <i>Only if issued with gum</i>
Catalogue Symbol:	★ ★	★	★	★	★	(★)
PRE-1890 ISSUES	<i>Pre-1890 stamps in these categories trade at a premium over Scott value</i>			Scott Value for "O.G."		Scott "No Gum" Values thru No. 218
1890-1935 ISSUES	Scott "Never Hinged" Values for Nos. 219-771	Scott Value for "O.G." (Actual value will be affected by the degree of hinging)		Disturbed Original Gum: Gum showing noticeable effects of humidity, climate or hinging over more than half of the gum. The significance of gum disturbance in valuing a stamp in any of the Original Gum categories depends on the degree of disturbance, the rarity and normal gum condition of the issue and other variables affecting quality. For example, stamps issued in tropical climates are expected to have some		
1935 TO DATE	Scott Value for "Unused"					

Covers

Minor nicks, short edge tears, flap tears and slight reduction at one side are normal conditions for 19th century envelopes. Folded letters should be expected to have at least one file fold. Light cleaning of covers and small mends along the edges are accepted forms of conservation. Unusual covers may have a common stamp with a slight crease or tiny tear. **These flaws exist in virtually all 19th century covers and are not always described. They are not grounds for return.**

Catalogue Values and Estimates

Unless otherwise noted, the currently available *Scott Catalogue* values are quoted in dollars with a decimal point. Other catalogues are often used for foreign countries or specialized areas and are referred to by their common name: *Stanley Gibbons* (SG), *Dietz*, *American Air Mail Catalogue* (AAMC), *Michel*, *Zumstein*, *Facit*, etc. Estimates are indicated with an "E." and reflect our conservative valuation in dollars. Reserves will never exceed the low end of the estimate range; they will sometimes exceed Scott Catalogue value for stamps in Extremely Fine condition.

Because of certain pricing inconsistencies in the *Scott Catalogue*—for example, blocks that have no gum, the absence of premiums for Mint N.H. items, etc.—we cannot guarantee the accuracy of values quoted for multiples, specialized items and collection lots. We generally try to be conservative, but buyers may not return a lot because of a discrepancy in catalogue value due to Scott pricing inconsistencies.

Symbols and Abbreviations (see chart above for gum symbols)

⊞	Block	E	Essay	pmk.	Postmark	No.	Scott Catalogue Number
⊞	Cover	P	Proof	cds	Circular Datestamp	hs	Handstamp
FC	Fancy Cancel	TC	Trial Color Proof	var.	Variety	ms.	Manuscript

Jeffrey Forster—1869s, Art, Golf and Wine

JEFFREY M. FORSTER WAS A CALIFORNIA ATTORNEY, PROMINENT PHILATELIC EXHIBITOR, prolific author and major contributor to the U.S. Philatelic Classics Society. Jeff passed away on August 19, 2022, at the age of 77. Few outside his circle of friends and family knew he had been struggling with an illness during the previous year. That is how he wanted it.



Jeffrey M. Forster

Jeff was born in Philadelphia on March 7, 1945. He lived most of his adult life in the Bay Area of California, where he practiced law after graduating from University of California at Berkeley and Hastings College of Law, University of California.

For nearly a half-century, Jeff specialized in the 1869 Pictorial Issue. In 1975 he became one of the earliest and youngest members of the 1869 Pictorial Research Associates, the collector society which focused exclusively on the 1869s (the group dissolved in 1991). I met Jeff for the first time in 1977 at one of the stamp shows in the old New York Coliseum in Columbus Circle. I was 15 and Jeff was 32. Our friendship lasted 45 years.

During the formative period of Jeff's collecting career, he was mentored and encouraged by collectors such as Elliott Coulter, Duane Garrett, Bob Paliafito and Ryohei Ishikawa. Jeff collected 1869s alongside Michael Laurence, chief editor of the *Chronicle* and 10¢ 1869 specialist.

Jeff's presence at every Westpex show in San Francisco was a sure bet. The group photograph shown at right was taken at Westpex in 1982. Jeff, then just 37, is standing with Ryohei Ishikawa, Elliott Coulter and Michael Laurence.

With great energy and enthusiasm, Jeff contributed decades of time and effort as a U.S. Philatelic Classics Society regional vice president, writing articles for the *Chronicle* and helping to organize presentations and exhibits for gatherings of U.S. classics collectors. Since 1981, the 1869 section of the *Chronicle* has featured 21 articles written by Jeff on a wide range of 1869 topics. He was a major contributor to the *1869 Times* journal and books published by the 1869 PRA.

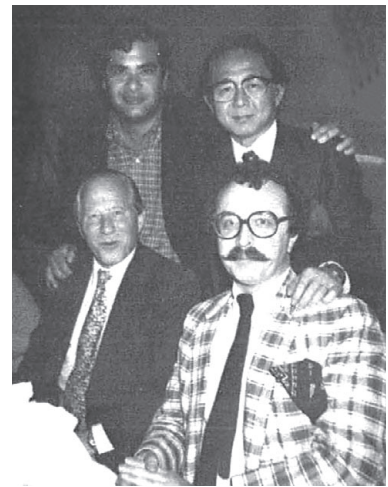
Jeff's 1869 collection and exhibit evolved from a traditional presentation of stamps and covers to a survey collection of domestic and foreign mails, and then finally into its most recent form, the Large Gold medal exhibit titled "1869 Pictorial Issue Used in International Mails." This is the collection the Siegel firm is honored to offer on behalf of Jeff's trust. All of his prized 1869 covers are presented in this sale catalogue.

Jeff's collecting career was not without some drama. The 1869 exhibit was stolen from him in November 1998 outside the Jacob K. Javits Convention Center in New York City after an ASDA show. It was recovered by the FBI and returned to him on January 18, 2000. After the recovery, Jeff continued to improve and add to the exhibit.

Jeff was also among the group of litigants who laid claim to the famous "Ice House" cover, the only recorded genuine 90¢ 1869 cover that was stolen from J. David Baker in 1967 and recovered in 2006. Jeff's claim was based on representations made to him by the late Duane Garrett, which could not be substantiated. The court ultimately decided in favor of the Baker trust's beneficiaries after their attorneys successfully established that the funds received for the original claim had been fully refunded to the insurance company. The Siegel firm sold the Ice House cover in June 2009.

Jeff's dream of owning the Ice House cover was not to be, but another "dream" cover did become his greatest acquisition: the 10¢ 1869 and Danish West Indies mixed-franking cover (lot 1039 in this sale). It was acquired by Elliott Coulter in 1984 and, following his death in 1987, remained in his wife Judy's possession for 19 years. When Judy decided to sell the collection through our firm, Jeff attended the auction and was the victorious bidder. After the auction, he was very emotional about the event, which brought together his memories of Elliott and his success in assuming the mantle of ownership of this extraordinary cover.

In addition to his philatelic interests, Jeff was an avid art collector, an accomplished golfer and knowledgeable oenophile. He and his surviving wife, Sandy Deacon, were married in 2016.



Jeff Forster (back left), Ryohei Ishikawa (back right), Elliott Coulter (seated left) and Michael Laurence (seated right)

HAWAII

AFTERNOON SESSION

TUESDAY, APRIL 18, 2023, AT 1:30P.M. (LOTS 1001-1209)

THE JEFFREY M. FORSTER COLLECTION OF
THE 1869 PICTORIAL ISSUE USED IN INTERNATIONAL MAILS

HAWAIIAN MAIL



1001

- 1001 ☒ **2c Brown (113)**. Rich color, used with **10c Green (68)**, tied by two strikes of crossroads cancel, red "San Francisco Paid All Sep. 12" (1870) circular datestamp on cover **to Hilo, Hawaii**, addressed to Hattie F. Coan, sender's directive "*Per Ajax*" crossed out and changed to "*Per Stmr*", slightly reduced at right, small corner repair at top right, still Very Fine, rare mixed-issue combination for double 6c treaty rate to Hawaii, ex Adm. Harris and Juhring, with 1978 P.F. certificate E. 750-1,000



1002

- 1002 ☒ **2c Brown (113)**. Two, used with **3c Ultramarine (114)**, matching segmented cork cancels and "San Francisco Cal. Jun. 10" (1870) circular datestamp on 3c Pink entire (U58) **to Hilo, Hawaii**, addressed to Hattie F. Coan, blue merchant's datestamp on back, likely carried on the American steamer *Ajax*, departing San Francisco June 10, 1870, and arriving Honolulu June 20, expertly restored along right side, Very Fine appearance, unusual combination for 10c contract rate, with 2014 P.F. certificate E. 750-1,000



1003

- 1003 ☒ **3c Ultramarine (114)**. Two, tied by quartered cork cancels, red "San Francisco Paid All Oct. 12" (1870) circular datestamp on buff cover **to Hilo, Hawaii**, addressed to Hattie F. Coan, sender's directive "Via 'Moses Taylor'", reduced at left, otherwise Very Fine, scarce 1869 Pictorial cover to Hawaii, ex Coulter E. 500-750

HAWAII

A spectacular double-rate Hawaiian and United States mixed-franking cover, carried on the last sailing before the 1870 postal treaty went into effect



1004

- 1004 ☒ **10c Yellow (116).** Horizontal pair, brilliant color, tied by bold strikes of quartered cork cancel, used with horizontal pair of **Hawaii, 1866, 5c Blue (32)**, two clear strikes of negative "HI" cancel and tied by San Francisco circular datestamp, neat "Honolulu Hawaiian-Islands Jun. 22" (1870) circular datestamp on cover to A. M. R. Fitzsimmons, Reading Hills Mich.—carried on the American steamer *Ajax*, departing Honolulu June 23, 1870, arriving San Francisco July 4—10c stamps cancelled on arrival, "San Francisco Cal. Jul. 5" circular datestamp struck at lower right, one 10c slight corner crease

VERY FINE. A RARE AND COLORFUL HAWAIIAN AND UNITED STATES 1869 PICTORIAL ISSUE MIXED-FRANKING COVER. ONE OF NINE RECORDED FROM HAWAII WITH THE 10-CENT 1869 STAMP.

The cover was sent on a Pacific Mail Steamship Co. contract vessel, and the franking paid the double 5c Hawaiian and double 10c U.S. rates. According to Laurence census, there are nine 10c 1869 and Hawaii mixed-franking covers. The rate from Hawaii to the U.S. in June 1870 was 10c for a contract steamer or 5c for a non-contract ship (3c postage plus 2c ship fee), plus 5c Hawaiian postage. This was the last non-contract sailing before a new postal convention became effective (July 1, 1870), which abolished the separate 2c ship fee and the need for mixed U.S.-Hawaiian postage. The cover offered in lot 1005 was carried on the same trip.

Illustrated in Laurence 10c 1869 book (p. 312). Ex Knapp, Tows, Juhring, Ishikawa and Pietsch. With 1978 P.F. certificate. E. 10,000-15,000

An extremely rare combination of 1869 Pictorial Issue and Hawaiian stamps, carried on the last sailing before the 1870 postal treaty went into effect



1005

- 1005 ☒ **2c Brown (113)**. Vertical pair, used with horizontal pair of **3c Ultramarine (114)**, tied by quartered cork cancels, used with **Hawaii, 1866, 5c Blue (32)**, tied by negative "HI" cancel, "Honolulu Hawaiian-Islands Jun. 23" (1870) circular datestamp on cover to S. P. Hartshorn, Buckley Ill., sender's charge notation "Cg. W.L.R.J." at upper left—carried on the American steamer *Ajax*, departing Honolulu June 23, 1870, arriving San Francisco July 5—2c and 3c stamps cancelled on arrival, "San Francisco Cal. Jul. 5" circular datestamp struck at lower right, stamps slightly affected from placement near edge of cover, barely reduced at left

VERY FINE. AN EXCEEDINGLY RARE MIXED FRANKING WITH HAWAII 5-CENT KAMEHAMEHA V AND 2-CENT AND 3-CENT 1869 PICTORIAL STAMPS, USED ON THE LAST SAILING BEFORE THE POSTAL CONVENTION WENT INTO EFFECT, WHICH ELIMINATED THE NEED FOR MIXED FRANKINGS.

The cover was sent on a Pacific Mail Steamship Co. contract vessel, and the franking paid the 5c Hawaiian and 10c U.S. rates. The rate from Hawaii to the U.S. in June 1870 was 10c for a contract steamer or 5c for a non-contract ship (3c postage plus 2c ship fee), plus 5c Hawaiian postage. This was the last non-contract sailing before a new postal convention became effective (July 1, 1870), which abolished the separate 2c ship fee and the need for mixed U.S.-Hawaiian postage. The cover offered in lot 1004 was carried on the same trip.

Ex Pietsch. With copy of 1981 P.F. certificate. E. 7,500-10,000

HAWAII

Extraordinary mixed franking with Hawaiian 2c bisect and 5c Kamehameha V used with 3c 1869 Pictorial Issue stamps on treaty rate cover to Nova Scotia



1006

1006 ☒ **3c Ultramarine (114).** Horizontal pair, tied by quartered cork cancels, used with **Hawaii, 1864, 2c Rose Vermilion, Diagonal Half (31b) and 1866, 5c Blue (32)**, tied by bold negative "HI" cancels, on cover to Mrs. W. Redding in **Kentville, Nova Scotia**, red "G.P.O. Honolulu Paid All Feb. 1" (1871) double-circle datestamp, magenta "San Francisco Paid All Feb. 19", Kentville receiving back-stamp (Mar. 6), endorsed "*JW Wodehouse*" at lower left by the British ambassador to Hawaii, stamps slightly affected from placement near edge of cover, small cover tear at top from opening

VERY FINE. A SPECTACULAR COVER AND EXTREMELY RARE MIXED FRANKING PAYING THE 6-CENT U.S.-HAWAII CONVENTION RATE AND 6-CENT U.S.-GREAT BRITAIN TREATY RATE.

During the period from July 1, 1870, to December 31, 1881, a new treaty established a rate of 6c for any letter between the United States and Hawaii. This could be paid by either U.S. or Hawaiian postage. However, for a letter addressed beyond U.S. borders, it was still necessary to add U.S. postage. Three such post-treaty rate combination covers are recorded. Two are addressed to Nova Scotia (the other is seriously defective).

Ex Knapp, Foote, Ishikawa and Walske. With 2003 P.F. certificate stating "it is a genuine usage".
 E. 10,000-15,000

MAIL FROM RED RIVER SETTLEMENT



1007



1008

- 1007 ☒ **2c Brown (113).** Vertical pair and single, straight edges at left, affixed over manuscript “Paid” and tied by target cancels, “Pembina Dakota Jul. 13” (1869) territorial circular datestamp on cover with blue embossed Royal Insurance Company seal on top flap, from **Fort Garry on the Red River (modern-day Winnipeg) to Montreal, Canada via U.S. Dakota Territory**, receiving backstamp (Jul. 30), pair with few perf separations and few scuffs

VERY FINE. ONE OF TWO RECORDED 2-CENT 1869 PICTORIAL COVERS FROM RED RIVER SETTLEMENT, ADDRESSED TO CANADA AND MAILED THROUGH THE U.S. TERRITORIAL POST OFFICE IN DAKOTA TERRITORY.

In 1869-70, mail from the isolated Canadian outpost at Fort Garry on the Red River (modern-day Winnipeg) was first routed by private courier down the river to Pembina in the U.S. Dakota Territory to enter the U.S. mail system before being sent on to its destination in eastern or western Canada. U.S. stamps were sold at Fort Garry to pay for the standard 6c rate from the U.S. to Canada. This was the only available southern route for Canadian mail posted north of Dakota, and less than a half-dozen covers bear the 1869 Pictorial Issue..... E. 4,000-5,000

- 1008 ☒ **6c Ultramarine (115).** Tied by target cancel, “Pembina Dakota Aug. 23” (1870) territorial circular datestamp on cover from **Fort Garry on the Red River (modern Winnipeg) to Montreal, Canada via U.S. Dakota Territory**, receiving backstamp (Sep. 3), cover with small tear at top

VERY FINE. A RARE USE OF THE 6-CENT 1869 PICTORIAL ISSUE FROM RED RIVER SETTLEMENT, ADDRESSED TO CANADA AND MAILED THROUGH THE U.S. TERRITORIAL POST OFFICE IN DAKOTA TERRITORY.

In 1869-70, mail from the isolated Canadian outpost at Fort Garry on the Red River (modern-day Winnipeg) was first routed by private courier down the river to Pembina in the U.S. Dakota Territory to enter the U.S. mail system before being sent on to its destination in eastern or western Canada. U.S. stamps were sold at Fort Garry to pay for the standard 6c rate from the U.S. to Canada. This was the only available southern route for Canadian mail posted north of Dakota, and less than a half-dozen covers bear the 1869 Pictorial Issue.

With 2005 P.F. certificate..... E. 3,000-4,000

BRITISH COLUMBIA AND VANCOUVER ISLAND



1009



1010



1011

- 1009 ☒ **2c Brown (113).** Used with **3c Ultramarine (114)**, cancelled by segmented cork cancels on **6c Purple entire (U65)** to **Victoria, Vancouver Island, British Columbia**, 2c tied by "San Francisco Cal. Jul. 5" (1869) circular datestamp, Very Fine, from the Nathan correspondence which includes covers originating in Hawaii (the steamer *Ajax* arrived from Honolulu on July 5, 1869), ex Waterhouse..... E. 400-500
- 1010 ☒ **10c Yellow (116).** Horizontal pair, affixed upside down and tied by unusual "fan" segmented cork cancels, "San Francisco Cal. Apr. 23" (ca. 1870) circular datestamp on buff cover to **Victoria, Vancouver Island, British Columbia**, sender's directive "*per Newbourn*", slightly reduced at top, Fine, from the Nathan correspondence which includes covers originating in Hawaii, ex Juhring and Coulter..... E. 300-400
- 1011 ☒ **12c Green (117).** Tied by bold strike of circle of wedges cancel, "San Francisco Cal. May 18" (1873) circular datestamp on cover to **Victoria, Vancouver Island, British Columbia**, sender's directive "*Per Prince Alfred*", receiving backstamp, some toned spots also affect stamp, some wear including small tear at top away from stamp, Very Fine, a scarce double-rate franking, the rate was reduced to 6c after June 30, 1870, so this rate was in effect for a short time before the Bank Note stamps came into use..... E. 500-750

**British Columbia and 3c 1869 Pictorial Issue mixed franking on cover to Scotland
via Port Townsend, Washington Territory**



1012

- 1012 ☒ **3c Ultramarine (114).** Horizontal pair, tied by “Port Townsend W.T. May 3” (1870) Washington Territory circular datestamp, used with **British Columbia & Vancouver Island, 1869, 5c on 3c Bright Red, Perf 14 (9)**, tied by blue “35” oval grid cancel on cover to **Edinburgh, Scotland**, blue “Victoria B.C. Apr. 25, 1870” and red “Chicago Am. Pkt. Paid May 23” backstamps, receiving backstamp, red “Paid Liverpool U.S. Packet 5 JU 70 25” datestamp, carried on the Allan Line *Scandinavia*, some slight edgewear and minor perf flaws

VERY FINE. A RARE USE OF THE 1869 PICTORIAL ISSUE FROM VANCOUVER ISLAND TO SCOTLAND, WITH ALL STAMPS AFFIXED AT THE POINT OF ORIGIN.

Prior to July 1, 1870, mail from British Columbia and Vancouver Island to Great Britain sent through the United States required prepayment of Colonial postage to the border, as well as U.S. postage to Great Britain, which was 6c at this time. United States stamps were made available at the local post office for this purpose.

Ex Knapp. E. 10,000-15,000

**An outstanding Wells Fargo & Co. Express cover from Vancouver Island to Great Britain
with British Columbia and 6c 1869 Pictorial Issue mixed franking**



1013

- 1013 ☒ **6c Ultramarine (115).** Tied by segmented cork cancel with matching cancel and faint unreadable circular datestamp on **10c Green entire (U40)** with **Wells, Fargo & Co. printed frank, to London, England**, used with **British Columbia & Vancouver Island, 1869, 5c on 3c Bright Red, Perf 14 (9)** tied by blue "35" oval grid cancel, blue "**Wells, Fargo & Co. Express Victoria**" oval handstamp, red "**Chicago Am. Pkt. Paid Jun. 4**" backstamp, carried on the *Allan Line Moravian*, manuscript "*Recd 19/1/71*" at center, some soiling and small tears, 6c tear at top, entire with some paper adherence

VERY FINE APPEARANCE. A RARE USE OF THE 1869 PICTORIAL ISSUE FROM VANCOUVER ISLAND TO ENGLAND, CARRIED BY WELLS FARGO & CO. TO THE UNITED STATES POST OFFICE. A WONDERFUL MIXED FRANKING WITH BOTH STAMPS AFFIXED AT ORIGIN.

Wells Fargo & Co. received the cover in Victoria, where the British Columbia 5c and U.S. 6c 1869 stamps were affixed. Privately carried mail was required to have the Colonial postage prepaid. It was brought by Wells Fargo to a U.S. post office and then transported on the transcontinental railroad to the foreign-mail exchange office in Chicago.

There are only two other examples of the 6c 1869 in combination with stamps of other countries where the stamps were affixed at the place of origin. One is a similar franking on a 6c entire (ex Eubanks, Sale 1004, lot 97). The other is a cover front from Hawaii to Shanghai with 2c and 6c 1869s used with Hawaiian stamps. The other four recorded 6c 1869 combination covers had the stamps applied as either forwarding postage or to indicate postage due, and thus were not used for the original mailing.

Ex Dale-Lichtenstein. With 2004 P.F. certificate. E. 7,500-10,000

CANADIAN MAIL



- 1014 ☒ **2c Brown (113)**. Bright shade, tied by cork cancel on folded printed commission merchant's prices current dated "New York Jan. 4, 1870" to **Montreal, Canada**, fresh and Very Fine, a scarce 2c 1869 circular-rate use to Canada..... E. 200-300
- 1015 ☒ **6c Ultramarine (115)**. Bright color, tied by cork cancel, "East Saginaw Mich. May 18" (1869) circular datestamp on black-bordered **mourning** cover to **Tilsonbourg, Ontario, Canada**, Ingersoll and receiving backstamps, Very Fine and attractive..... E. 200-300
- 1016 ☒ **12c Green (117)**. Tied by cork cancel, light strike of "Cleveland O. Feb. 14" (1870) circular datestamp on cover with embossed initial at left to **Hamilton, Ontario, Canada**, receiving backstamp, barely reduced at left, Very Fine double-rate use..... E. 200-300
- 1017 ☒ **6c Ultramarine (115)**. Horizontal strip of four, tied by quartered cork cancels, "Buffalo N.Y. Jun. 9" (1870) circular datestamp on cover to **Falkirk, Ontario, Canada**, transit and receiving backstamps, slightly reduced at right and minor edgewear, Very Fine, a rare quadruple-rate use to Canada paid solely by 6c stamps, ex Gibson E. 1,000-1,500

The only recorded example of the 1869 Pictorial Issue used with Canadian stamps



1018

- 1018 ☒ **3c Ultramarine (114).** Horizontal pair, trimmed perfs at left, used with horizontal pair of **Canada, 1870, 3c Red, Ottawa Printing, Perf 12 (37)**, stamps have faults, both pairs tied by circle of wedges cancels and red exchange office circular datestamp ("Apr." clear, but New York or Boston city name is too faint to determine) on small narrow cover **to London, England**, red "London Paid" receiving datestamp with 1870 year date, opened on three sides

FINE APPEARANCE. THIS IS THE ONLY RECORDED COVER WITH THE 1869 PICTORIAL ISSUE USED IN CONJUNCTION WITH CANADIAN STAMPS.

The first 3c Small Queen stamps were issued in January 1870 from the Ottawa printing. This April 1870 cover bears a pair from the early printing. There are no Canadian postal markings; therefore, it appears that this cover was first prepaid with Canadian stamps for the 6c rate to England, then the U.S. stamps were applied for the corresponding rate to England from a U.S. origin point. The cover was probably carried outside the mails to Boston or New York and mailed from there.

Ex Stark (Ashbrook files), Ishikawa, Kuphal and Gross. Illustrated in *Ashbrook Special Service*, #7, p. 41, photo 29. E. 4,000-5,000

MARITIME PROVINCES—NEW BRUNSWICK



1019

1020

- 1019 ☒ **2c Brown (113)**. Wide interpane margin at left, straight edge at top, cancelled by cork, "Houlton Me. May 16" (1870) circular datestamp on cover **to Woodstock, New Brunswick**, light strike of "PAID 2" handstamp, receiving backstamp, slightly reduced at left, trivial edgewear, Very Fine, a scarce rate, Houlton and Woodstock are less than 15 miles apart, a special 2c rate per half-ounce was arranged, which was in effect from 1851 to 1875, very few examples of this rate are recorded, with 1983 P.F. certificate E. 750-1,000
- 1020 ☒ **2c Brown (113)**. Three, cork cancels with left stamp tied by "Boston Mass. Feb. 14 5AM" Valentine's Day circular datestamp on cover **to New Brunswick, Canada**, two different 1870 New Brunswick receiving backstamps, left stamp straight edge at left, small repairs, otherwise Fine E. 200-300



1021

- 1021 ☒ **6c Ultramarine (115)**. Horizontal pair, used with **5c Brown (76)**, cancelled by "REGISTERED" straightline handstamp on legal-size cover **to St. John, New Brunswick**, "Bangor Me. Jun. 8" (1870) circular datestamp with duplex grid cancel, appropriate registry markings, "State Land Office, Bangor Me." double-oval handstamp at left, slightly reduced at left, some slight wear including small cover edge tear at top left, still Very Fine, an attractive and rare double-rate registered cover to New Brunswick, with 1991 P.F. certificate E. 750-1,000

NEWFOUNDLAND, NOVA SCOTIA AND PRINCE EDWARD ISLAND



- 1022 ☒ **10c Yellow (116).** Tied by bold strike of rosette cancel, smudgy strike of "New York Apr. 12" (1870) circular datestamp on buff cover with **Catholic Publishers and bookseller's corner card to Havre de Grace, Newfoundland**, illustration of pointing hand at left pointing to the Newfoundland of the address, **missent** to Havre de Grace Md. with two strikes of "Havre de Grace Md. Apr. 13" and Apr. 15 circular datestamps, "Havre de Grace Newfoundland MY 10 1870" backstamp, "13" and "4d" due markings, some soiling and edgewear, still Very Fine, this is **the only recorded use of the 10c 1869 Pictorial to Newfoundland**, the 10c rate to Newfoundland was in effect from July 1864 to Nov. 30, 1872, Newfoundland did not join Canada as a province until Mar. 31, 1949, with 2011 P.F. certificate..... E. 1,500-2,000
- 1023 ☒ **2c Brown (113).** Tied by circular cork cancel on unsealed cover to **Annapolis, Nova Scotia**, 1870 receiving backstamp (date unclear), blue crayon "1" due marking, minor edgewear, Very Fine circular rate use, with 1996 Richter certificate E. 200-300
- 1024 ☒ **6c Ultramarine (115).** Tied by large circle of wedges cancel, "Portland Me. Aug. 1" (1870) circular datestamp on cover to **Acadia Mines, Nova Scotia**, red Londonberry datestamp, transit and receiving backstamps, slightly reduced at left, Very Fine use E. 300-400
- 1025 ☒ **3c Ultramarine (114).** Horizontal strip of three and single, tied by **blue** target cancels and matching "Cincinnati O. Mar. 6" (1870) circular datestamp on cover to **Charlottetown, Prince Edward Island**, receiving backstamp, Very Fine double-rate use, ex Rose, with 1996 P.F. certificate E. 300-400
- 1026 ☒ **6c Ultramarine (115).** Rich color, tied by cork cancel, "Virginia City Nev. Dec. 6" (1869) circular datestamp on buff cover to **Filat River, Prince Edward Island**, small tear at bottom, slightly reduced at right, stamp with some toning along perfs, some edgewear, still Fine use from Nevada to Prince Edward Island, ex Gallagher E. 200-300

MEXICO

MEXICO

1027



1028



1029

- 1027 ☒ **2c Brown (113).** Deep rich color, tied by quartered cork cancel on folded printed circular from New York City to **Puebla, Mexico**, sender's double-oval datestamp, sender's directive "*pr City of Mexico*", Very Fine and scarce circular-rate use to Mexico E. 300-400
- 1028 ☒ **3c Ultramarine (114).** Cancelled by segmented cork, "**San Antonio Tex. Jun. 10**" (1870) circular datestamp on large part of gray folded letter to **Parral, Mexico**, likely originated in Louisiana — "Steamboat 1338 New Orleans" double-oval backstamp with numeral in manuscript — Texas forwarder's datestamp on back (F. Grogs & Co.), who added "*via El Paso Tex.*" directive at lower left and the state abbreviation "*de Chihua*", bold "2" reales due marking, Very Fine, scarce use carried outside the mails to San Antonio where it was placed into the mail to Mexico, ex Cutts, illustrated in Laurence 10c 1869 book (p. 13), with 1996 P.F. certificate E. 750-1,000
- 1029 ☒ **3c Ultramarine (114).** Tied by bold strike of circle of narrow wedges cancel, "**Eagle Pass Tex. May 23**" (1870) circular datestamp on folded letter **from Mexico** to San Antonio Tex., datelined "*San Luis Potosi May 9th 1870*", two vertical file folds incl. one affecting stamp, otherwise Very Fine, scarce inbound use, carried across the border from Mexico, San Luis Potosi is 500 miles from Eagle Pass, ex Dr. Heimburger, with 2013 P.F. certificate..... E. 750-1,000

One of only two recorded 30c 1869 Pictorial Issue covers to Mexico



1030

- 1030 ☒ **30c Ultramarine & Carmine (121).** Tied by bold strike of rosette cancel and “New-York Feb. 2” (1870) circular datestamp on gray folded letter **to Vera Cruz, Mexico**, from M. Echeverria & Co. to Calleja & Martinez, with sender’s directive “*pr Cleopatra*”, bold “5” reales due marking for internal Mexican postage

VERY FINE. A RARE EXAMPLE OF THE 30-CENT 1869 PICTORIAL ISSUE ON COVER. ONLY TWO COVERS TO MEXICO ARE RECORDED WITH THIS HIGH-DENOMINATION 1869 STAMP. WHILE ANY 30-CENT 1869 ON COVER IS RARE, THIS COVER TO MEXICO IS OF FAR GREATER RARITY AND OFFERS THE POSTAL HISTORY COLLECTOR A SIGNIFICANT OPPORTUNITY TO SHOW THE TRIPLE RATE PAID BY A SINGLE 1869 PICTORIAL STAMP.

The 1869 Census book records only two covers to Mexico with the 30c. Both are triple-rate covers from New York City. The cover offered here was part of the Ernest A. Wiltsee collection. It was acquired by him in 1938 shortly after this correspondence reached the market (Ashbrook Index Cards at P.F. website). The other is ex Saul Newbury and J. David Baker, and was last offered in our 2011 sale of the Gordon Eubanks 1869 collection.

Ex Wiltsee. Signed Ashbrook. With 1967 P.F. certificate..... E. 15,000-20,000

WEST INDIES MAIL



1031

- 1031 ☒ **3c Ultramarine (114)**. Tied by blue circle of wedges cancel, matching "Jacksonville Fla. Oct. 10" (1869) circular datestamp on buff cover to **Nassau, Bahamas**, addressed "Care of Capt. Work, of Brig Atlantic, at Messrs. Holst & Co., Savannah Ga." "Ship-Letter Nassau NO 9, 1869" backstamp, red "Advertised" handstamp, red manuscript "Unclaimed", blue "4" pence crayon rate for amount due from recipient, light vertical file fold well away from stamp, cover opened at bottom and left, Very Fine, unusual use, the 3c stamp paid the postage from Jacksonville to Savannah, it was then carried outside of the mails to Nassau where it was put back into the mails but was unclaimed, only four 1869 covers are known to the Bahamas and this may be the only 3c single franking, ex Dr. Heimbürger, with 2013 P.F. certificate..... E. 500-750



1032

- 1032 ☒ **3c Ultramarine (114)**. Vertical pair, tied by bold circle of wedges cancels, "New York Mar. 24" circular datestamp on cover to **Nassau, Bahamas**, blue crayon "4" pence due, stamps with small toned spots, Very Fine, only four 1869 Pictorial covers are known used to the Bahamas, illustrated in the Laurence 10c 1869 book (p. 40)..... E. 400-500

One of two recorded 1869 Pictorial Issue covers to British Guiana



1033

- 1033 ✉ **10c Yellow (116).** Wide margins with huge straddle-pane margin at right, tied by circle of wedges cancel on blue folded letter datelined "New York 25th November 1869" to **Demerara, British Guiana**, sender's ship-name directive "South America", "St. Thomas NO 30 69" datestamp and "Demerara DE 6 69" double-circle datestamp on back, manuscript "4" pence rate changed to 5p (additional 1p for local delivery) with **large "5d" in circle** handstamp (a rare marking), ink erosion in several letters and some wear along file folds

VERY FINE. ONE OF TWO RECORDED 1869 PICTORIAL ISSUE COVERS TO BRITISH GUIANA. A MARVELOUS BRAZIL LINE USAGE VIA ST. THOMAS.

This was carried to St. Thomas on the United States and Brazil Steamship Co. *South America*, departing New York Nov. 23, 1869. The 1869 PRA Census lists an Apr. 29, 1869 cover to British Guiana, also with a 10c and re-rated from 4p to 5p due. This second, later cover, was not listed.

Illustrated in the Rose book (p. 81) and Laurence book (p. 52). Ex Coulter..... E. 4,000-5,000



1034



1035



1036

- 1034 ☒ **2c Brown (113).** Tied by bold strike of quartered cork cancel on blue folded printed prices current dated at Baltimore May 29, 1869, to **Caibarien, Cuba**, neat strike of blue "NA1" in oval handstamp, Very Fine 2c circular-rate cover to Cuba E. 300-400
- 1035 ☒ **10c Yellow (116).** Radiant color, cancelled by **red dot in circle foreign mail** cancel, matching "Baltimore Md. Sep. 8" (1869) circular datestamp on folded cover to **Santiago de Cuba, Cuba**, bold "NA1" in oval handstamp, missing side flaps, few insignificant tears at top left, Very Fine and attractive use, ex Baker, with 1978 P.F. certificate..... E. 500-750
- 1036 ☒ **10c Yellow (116).** Horizontal pair, tied by cork cancels and "Philadelphia Pa. Jan. 26" (1870) circular datestamp on cover to **Santiago de Cuba, Cuba**, bold "NA" in oval and "2" reales due handstamps, receipt docketing, tiny cover tear at top, Very Fine double-rate use E. 400-500



1037

- 1037 ☒ **10c Yellow (116).** Tied by circle of wedges cancel and "New-York Sep. 21" (1869) circular datestamp on gray folded cover **from Bonaire, Netherlands Antilles**, to New York, docketed "*E.B.F. Helmund, Bonaire via St. Thomas Sept. 5/69*", sender's directive "*Via St. Thomas*", blue "**Lamb & Co. * St. Thomas**" forwarder's oval handstamp struck on back and front, "St. Thomas 14 9 69" circular datestamp, horizontal file fold causing small break in paper at right, still Very Fine and very rare origin, with 1992 P.F. certificate E. 1,000-1,500



1038

- 1038 ☒ **10c Yellow (116).** Horizontal pair, tied by "N. York Steamship May 21" (1869) circular datestamp on blue folded cover **from Curacao, Netherlands Antilles**, to New York, readable strike of "Jacob A. Jesurun Curacao" oval company handstamp at lower left confirms origin, sender's directive "*Via St. Thomas*", cover refolded (not noted on certificate), Very Fine, an extremely rare use of the 1869 Pictorial from Curacao to New York paying double 10c steamship rate, the Laurence book (p. 63) notes only two 10c covers are recorded from Curacao (the other is a single franking), this was carried privately to St. Thomas where it entered the mails and was carried by a Brazil Line steamer to New York, the sending company was a branch of a prominent Jewish family in Curacao which at one point owned 100 sailing ships, with 1988 P.F. certificate..... E. 1,500-2,000



1039

The famous Danish West Indies and 1869 Pictorial Issue mixed-franking cover

- 1039 ☒ **10c Yellow (116).** Vibrant color and proof-like impression, used with **Danish West Indies, 1866, 3c Rose on White (2)**, large margins except just touched at lower left, rich color, both stamps tied by two strikes of 5-ring target cancel of St. Thomas D.W.I. on folded cover **from La Guaira, Venezuela, to New York via St. Thomas**, “Alexandre Fleury y Cia La Guayra” large blue oval hand-stamp applied by sender, on arrival the stamps were again tied by “New York Oct. 20” duplex circular datestamp and circle of wedges cancel, docketing indicates Oct. 8, 1869 origin date

EXTREMELY FINE. THE ONLY RECORDED EXAMPLE OF A UNITED STATES 1869 PICTORIAL ISSUE AND DANISH WEST INDIES MIXED FRANKING. THIS COLORFUL AND PRISTINE COVER IS WIDELY RENOWNED AS ONE OF THE MOST OUTSTANDING 1869 PICTORIAL COVERS EXTANT.

This spectacular cover is illustrated and described in Michael Laurence's book on 10c 1869 covers (p. 66). According to Laurence, it was carried outside the mails by private forwarder from Venezuela to St. Thomas, then posted there for transport on the United States and Brazil Steamship Co. steamer *South America*, departing St. Thomas October 14, 1869. The 3c stamp paid local Danish West Indies postage (as required, but usually paid in cash), and the 10c stamp paid the contract ship rate to the U.S. According to correspondence with Michael Laurence, previous reports of a second 1869-DWI mixed-franking cover (dated Apr. 13, 1872) in a South American collection have proven to be unfounded. Therefore, this remains the only extant 1869 and Danish West Indies mixed-franking cover

Illustrated in the Rose book (p. 84), where described as “one of the great mixed-franking gems” and in Laurence 10c book (p. 66). Ex Seybold, Krug and Coulter. E. 50,000-75,000



1040

- 1040 ☒ **10c Yellow (116).** Radiant color, tied by “N. York Steamship Aug. 21” (1871) circular datestamp on blue folded letter from **Jacmel, Haiti**, to New York, blue “Okill Freres, Jacmel, Haiti Aug. 1, 1871” company datestamp, red “Lamb & Co. * St. Thomas” forwarder’s oval handstamp struck on front and back, “St. Thomas 14 8 1871” circular datestamp, Very Fine, a rare 1869 Pictorial cover from Haiti and desirable example of inbound contract steamship mail routed thru St. Thomas with a clearly-struck forwarder marking and origin indicated, the Laurence book lists only three 10c 1869 covers originating in Haiti, with 1975 P.F. certificate E. 750-1,000



1041

- 1041 ☒ **6c Ultramarine (115).** Used with **1c Blue, F. Grill (92)** on 3c Pink on buff entire (U59) to **Kingston, Jamaica**, stamps cancelled or tied by grids, “Little Rock Ark. Jan. 28” (1870) circular datestamp, Colon (Feb. 13) British P.O. datestamp, Kingston receiving backstamp (Feb. 24), blue crayon “8” crossed out and uprated to “10”

VERY FINE. THIS IS THE ONLY RECORDED USE OF THE 1869 PICTORIAL TO JAMAICA. A GREAT POSTAL HISTORY RARITY OF THE 1869 ISSUE.

This was carried by American packet to Colon, Panama, and then by British Packet to Jamaica. With 2010 P.F. certificate..... E. 3,000-4,000



- 1042 ☒ **10c Yellow (116)**. Radiant color, interpane straight edge at right, tied by “N. York Steamship May 21” (1870) circular datestamp on blue folded cover **from Mayaguez, Puerto Rico**, to Philadelphia, blue company datestamp at left, sender’s directive “p Brazil Steamer”, faint strike of large blue St. Thomas forwarder’s backstamp, few small cover edge tears at bottom, Very Fine and rare use from Puerto Rico to Philadelphia via St. Thomas..... E. 1,000-1,500
- 1043 ☒ **10c Yellow (116)**. Brilliant color, cancelled by quartered cork, “Rochester N.Y. Feb. 27” circular datestamp on cover **to Santo Domingo, Dominican Republic**, red “New-York Mar. 8” datestamp, sender’s directive “Per Steamer Tybee” (the Tybee was one of the Santo Domingo Steam Line vessels), 1871 company receiving handstamp, some slight edgewear, Fine and very rare 1869 use to the Dominican Republic, Michael Laurence records only five 10c 1869 covers carried on the Santo Domingo Steam Line..... E. 400-500
- 1044 ☒ **10c Yellow (116)**. Horizontal pair, cancelled by bold strikes of “R” cancel, “Rochester N.Y. Sep. 29” (1870) circular datestamp on cover **to Santo Domingo, Dominican Republic**, red “New-York Oct. 15” circular datestamp ties stamps, sender’s directive “Per Steamer Tybee” (the Tybee was one of the Santo Domingo Steam Line vessels), light strike of receiving datestamp, one stamp light stain at left, still Very Fine and very rare 1869 use to the Dominican Republic, Michael Laurence records only five 10c 1869 covers carried on the Santo Domingo Steam Line and this is the only double 10c rate, illustrated in the Laurence book (p. 73), with 2007 P.F. certificate E. 500-750

U.S.S. *Swatara* handstamp on 1869 Pictorial Issue cover from the Dominican Republic

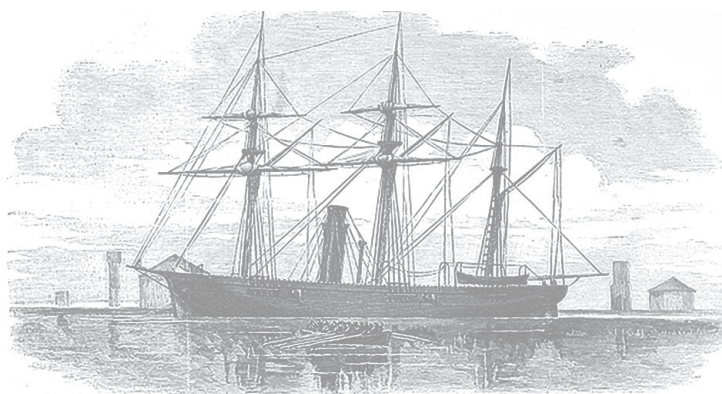
1045

- 1045 ☒ **3c Ultramarine (114).** Horizontal pair, well-centered, interpane straight edge at right, tied by cork cancels and “N. York Steamship May 27” (1870) circular datestamp on cover to West Dresden N.Y., bold blue “U.S. Ship Swatara.” handstamp with illustration of full-rigged ship, manuscript endorsement “San Domingo/JBH/Ensign”, blue crayon “Due 4” making up 10c rate, attractive green and gold engraved monogram on flap, sender also applied a green circular serrated edge label with manuscript “May 15, 1870” date, minor edge wrinkles and nicks, stamps with few flaws

VERY FINE. A REMARKABLE COVER SENT BY A SAILOR ON BOARD THE *SWATARA* FROM THE DOMINICAN REPUBLIC TO THE UNITED STATES.

The *Swatara* was commissioned in 1865 and started with the West Indies squadron. She then served in the European squadron and brought John Surratt, wanted for conspiracy in Lincoln’s assassination, back from Egypt to face trial. She was later based in Santo Domingo. Typical 1869 frankings on inbound covers are 10c stamps. The use of two 3c stamps on this cover, paying only part of the 10c rate, and the clearly struck illustrated ship marking, make this one of the most colorful inbound uses we have encountered.

Ex Walske. E. 4,000-5,000

U.S.S. *Swatara*

One of two recorded 1869 Pictorial Issue covers to St. Lucia



1046

- 1046 ☒ **2c Brown (113).** Vertical pair, superb centering and deep rich color, tied by two neat strikes of quartered cork cancel on printed "Baltimore Prices-Current Letter-Sheet" dated Sep. 11, 1869, to **St. Lucia, British West Indies**, "St. Thomas SP 30 69" transit backstamp, St. Lucia receiving date-stamp ties pair, manuscript "1" (penny) due marking

EXTREMELY FINE. ONE OF TWO RECORDED 1869 PICTORIAL ISSUE COVERS TO ST. LUCIA.

The other known 1869 cover to St. Lucia, also bearing a 2c pair and addressed to MacFarlane & Co., realized \$8,500 hammer in our 1997 sale of the Jonathan W. Rose collection (Sale 794, lot 528).

Ex Juhring, Coulter and Cipolla. E. 3,000-4,000

CENTRAL AND SOUTH AMERICAN MAIL



1047

- 1047 ☒ **3c Ultramarine (114)**. Rich color, used with **10c Green, E. Grill (89)** and **12c Black, E. Grill (90)**, cancelled or tied by targets on cover to **Rosario, Argentina**, "Et.-Unis. Paq. Fr. K No. 1 22 Juil. 69" Ligne K octagonal datestamp ties 12c, company receiving datestamp, red "15" credit handstamp, blue crayon "5c" due, stamps with few light soiling spots, Very Fine use via American Packet and then by French Packet from Rio de Janeiro to Argentina E. 2,000-3,000



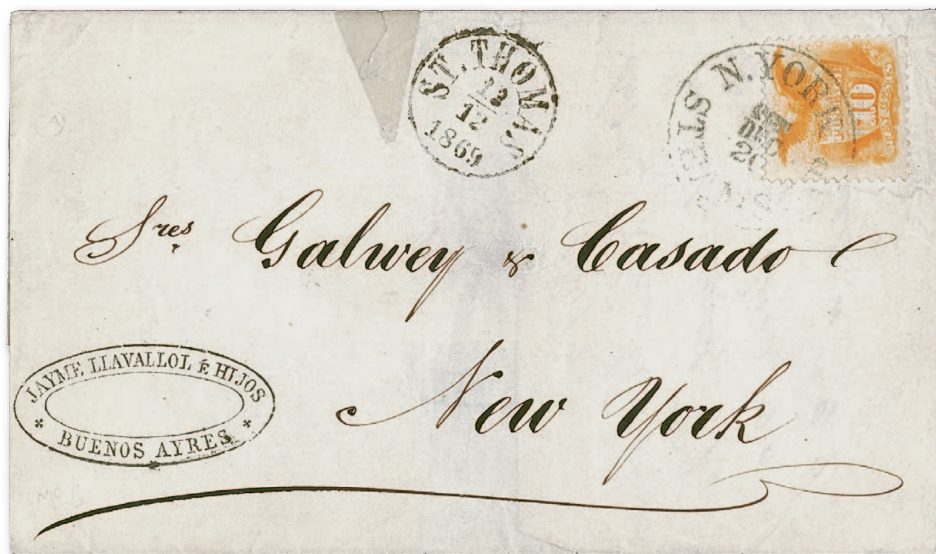
1048

- 1048 ☒ **15c Brown & Blue, Ty. II (119)**. Used with **3c Ultramarine (114)** and each tied by bold target cancel on cover to **Buenos Aires, Argentina**, two strikes of "Providence R.I. Apr. 20" (1870) circular datestamp, bold red "8" credit handstamp, pencil docketing on back "Recd June 2d...39 days from home", slightly reduced at right, clear of stamps and address, stamps with small perf flaws from placement at edge, Fine and scarce, ex Cutts..... E. 1,500-2,000



Detail of backstamp

1049



- 1049 ☒ **10c Yellow (116).** Vivid color, tied by “N. York Steamship Dec. 20” (1869) circular datestamp on cover **from Buenos Aires, Argentina**, to New York, clear strike of sender’s company handstamp, clear strike of blue “Forwarded by J. Niles & Co., St. Thomas W.I.” forwarder’s oval backstamp, clearly struck “St. Thomas 13 12 1869” circular datestamp, small cover tear at top reinforced with scotch tape, otherwise Very Fine, a very rare cover from Argentina to New York, carried privately to St. Thomas, this is the only such use recorded in the Laurence book (p. 63)..... E. 750-1,000



1050

- 1050 ☒ **10c Yellow, 12c Green (116, 117).** Rich colors, tied by quartered cork cancels, “New Bedford Mass. Jun. 18” (1870) circular datestamp on cover to whaling ship captain at **Cobija, Bolivia**, red “New York 12 Jun. 21” 12c credit datestamp, “Panama C JY 17 70” transit datestamp, “Barrau Hermano Cobija” forwarder’s oval backstamp, 10c trivial pulled perf at bottom left

VERY FINE. AN EXTREMELY RARE 1869 PICTORIAL ISSUE COVER TO BOLIVIA WITH A COLORFUL COMBINATION FOR THE 22-CENT RATE VIA BRITISH PACKET.

The 1869 PRA Census lists two covers to Bolivia for the 10c and 12c (the same entries), but the separate listings are for the *same cover* (offered here). Therefore, this cover represents the only 1869 cover to Bolivia for the 6c value and up.

Ex Ishikawa and Coulter..... E. 3,000-4,000



1051

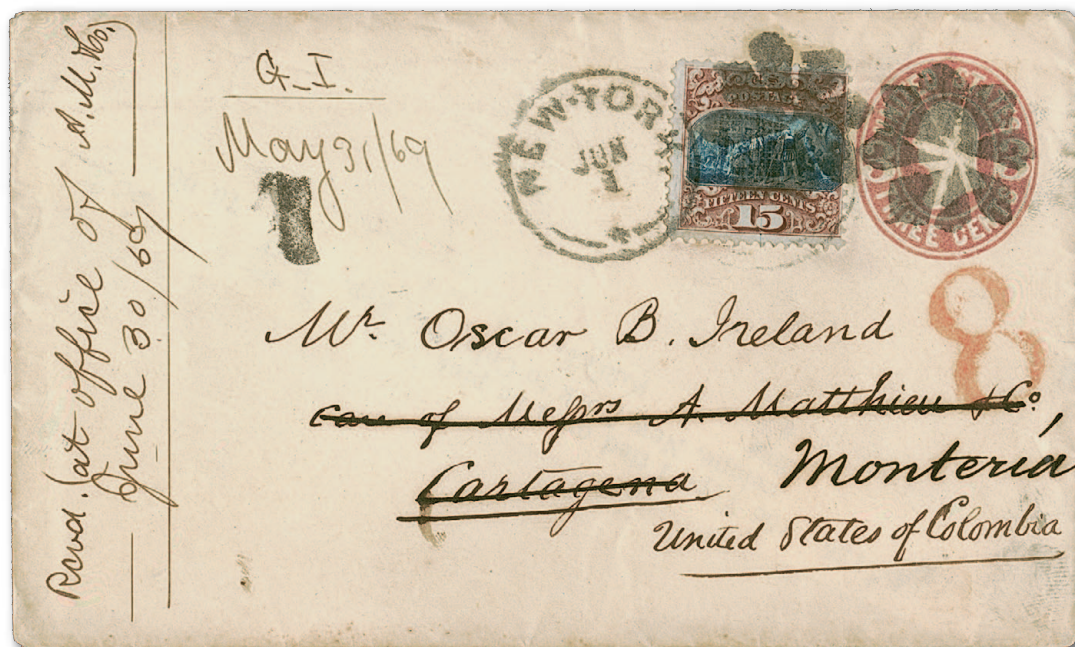
- 1051 ☒ **10c Yellow (116).** Bright color, tied by cork cancel, "Port Gibson Miss. Apr. 17" (1871) circular datestamp on 3c Green entire (U53) to **Rio de Janeiro, Brazil**, red "New York Paid All Apr. 24" circular datestamp, blue "FRANCA" in frame handstamp, receiving backstamp, missing most of top flap, some edgewear and soiling, still Fine, the correct rate was 15c but this short-paid cover was accepted as fully paid, ex Juhring, with 1978 P.F. certificate E. 1,500-2,000



1052

- 1052 ☒ **12c Green (117).** Used with **10c Yellow (116)**, slightly overlapping and tied by target cancels, "Southampton N.Y. Feb. 28" (1870) circular datestamp on cover to **Talcahuano, Chile**, addressed to whaling captain, red "New York 12 Mar. 4" 12c credit datestamp also ties stamps, red "25" handstamp for internal Chile postage, slightly reduced at left, Very Fine, very rare 1869 Pictorial cover to Chile E. 1,500-2,000

The only recorded 1869 Pictorial Issue cover to Colombia



1053

- 1053 ☒ **15c Brown & Blue, Ty. I (118).** Tied by rosette cancel and "New-York Jun. 1" duplex datestamp on 3c Pink entire (U59) **to Cartagena, Colombia, and forwarded to Monteria**, large red "8" credit handstamp, "**Albert Mathieu & Co. Carthagea N.G.**" forwarder's blue double-oval handstamp on back, neatly docketed with Jun. 30, 1869 receipt date

VERY FINE. AN OUTSTANDING 1869 PICTORIAL ISSUE COVER. THE 15-CENT TYPE I AND 3-CENT ENTIRE PAY THE 18-CENT RATE TO THE GULF COAST BY BRITISH PACKET VIA ASPINWALL (COLON). THIS IS THE ONLY RECORDED 1869 PICTORIAL COVER TO COLOMBIA.

The 18c rate to the Gulf Coast included 10c for carriage from New York to Aspinwall (Colon) and 8c (credit) for British transit to Cartagena. The forwarder in Cartagena arranged for delivery to the addressee in Monteria, about 120 miles south. There are no other covers to Colombia listed in the 1869 PRA Census.

Illustrated in Searing article on 15c Type I covers (*Chronicle* 108) and in color in 1869 PRA Census (p. 135). Ex Juhring and Coulter. With 2006 P.F. certificate. E. 5,000-7,500



1054

- 1054 ☒ **10c Yellow (116).** Guide arrow at bottom right, cancelled by bold strike of rosette, "New-York Jul. 1" (1869) circular datestamp on blue folded cover **to San Jose, Guatemala**, sender's blue oval handstamp and directive "*p Arizona*", few age spots, stamp barely affected from placement near edge of cover, Very Fine, a rare 1869 Pictorial cover to Guatemala, only four 1869 covers to Guatemala are recorded in 1869 PRA Census (two of which are fronts only, with 10c/30c and 30c 1869 frankings), with 1990 P.F. certificate E. 1,000-1,500

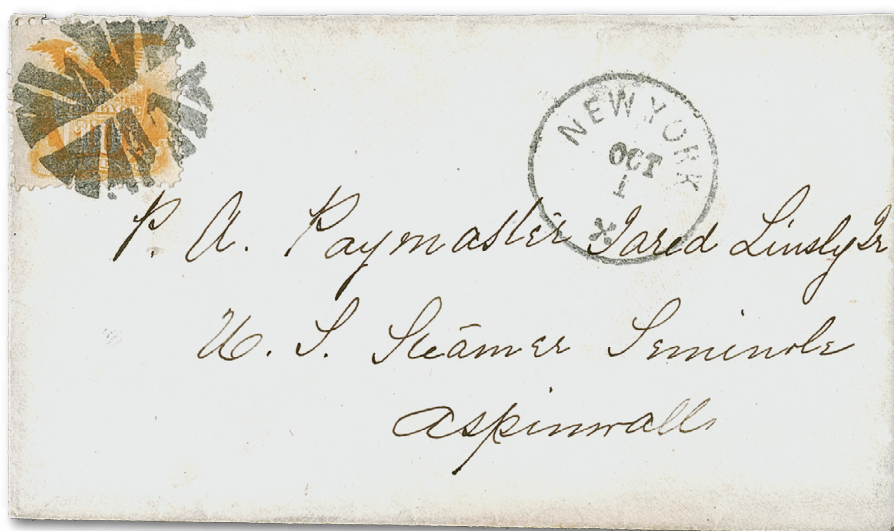


1055

- 1055 ☒ **10c Yellow (116).** Radiant color, tied by target cancel, "Fincastle Va. Mar. 30" (1870) circular datestamp on yellow cover **to Omoa, British Honduras**, British P.O. "St. Thomas AP 29 70" backstamp and "Belize JU28 70" arrival datestamp on front, blue crayon "4" pence due marking, pencil "6 pence" due apparently includes 2p additional postage, slightly reduced at left, some expert restoration

VERY FINE APPEARANCE. A RARE USE OF THE 1869 PICTORIAL ISSUE TO BRITISH HONDURAS, CARRIED BY BRAZIL LINE TO ST. THOMAS AND BY BRITISH PACKET FROM ST. THOMAS TO BELIZE.

Mail to Honduras in the 1869 Issue period could be sent to St. Thomas via New York on the Brazil Line, then by British Packet to Belize, or by the New Orleans and Belize Line. The 10c blanket ship rate applied to letters sent by American Packet (British postage was collected from the addressee). In October 1869 a new U.S.-British Honduras postal convention created the 12c rate. The subject is discussed by Stephen Rose in *Chronicle* 271..... E. 3,000-4,000



1056

- 1056 ☒ **10c Yellow (116).** Tied by bold strike of large segmented cork cancel, "New York Oct. 1" (ca. 1869) circular datestamp on cover to **Aspinwall, New Grenada**, addressed to paymaster aboard the U.S.S. *Seminole*, Very Fine..... E. 400-500



1057

- 1057 ☒ **15c Brown & Blue, Ty. II (119).** Cancelled by quartered cork and used with **5c Brown, F. Grill (95)**, tied by same cancel, "Washington D.C. Apr. 18" (1870) circular datestamp on cover to a sailor on board the U.S.S. *Tuscarora* at **Aspinwall, New Grenada**, red "New York Apr. 20" circular datestamp, slightly reduced at top, some slight edgewear, Fine, rare mixed-issue franking for double 10c rate, ex Gibson, Krug and Haas, with 1961 P.F. certificate E. 500-750

A rare and beautiful mixed-issue franking for double 34c rate to Peru



1058

- 1058 ☒ **10c Yellow (116).** Vertical pair, used with horizontal pair of **24c Lilac (78)**, right stamp pulled perf, tied by circle of wedges cancels, "Sing Sing N.Y. Aug. 20" (1869) circular datestamp on cover to **Lima, Peru**, red "48" credit handstamp, large red crayon "3", "A Panama AU 30 69" British P.O. circular datestamp, receiving backstamp, cover with expertly repaired tear at top left

VERY FINE APPEARANCE. A RARE COMBINATION OF 1861 AND 1869 ISSUES PAYING DOUBLE 34-CENT RATE POSTAGE ON A COVER TO PERU FROM THE DAVIS CORRESPONDENCE.

The single rate to Peru was 34c up to March 1870, when the rate was lowered to 22c. This combination of 24c 1861 and 10c 1869 stamps to pay the double rate is very rare. The large "3" indicates a triple rate, but the "48" credit is correct for the double rate.

Ex Walske. With 2003 P.F. certificate. E. 4,000-5,000



1059

- 1059 ☒ **12c Green (117).** Used with **10c Green, F. Grill (96)**, straddle-pane margin at right, cancelled by targets, tied by "West Concord Vt. Oct. 9" (1869) circular datestamp on cover to **Patia, Peru**, red "New York 12 Oct. 14" 12c credit datestamp, slight overall wear, still Fine and attractive, scarce combination paying the 22c rate to Panama by American and British Packet E. 750-1,000



1060

- 1060 ☒ **12c Green (117).** Horizontal pair and single, used with **2c Brown (113)** and **6c Ultramarine (115)**, matching segmented cork cancels (12c tied), "Portchester N.Y. Jul. 5" (1870) circular datestamp on cover to **Lima, Peru**, red "New York 24 Jul. 6" 24c credit datestamp, receiving backstamp (Aug. 1), right 12c tear at top, cover expertly restored at right, still Very Fine, a colorful franking from the Davis correspondence..... E. 1,000-1,500

A colorful 1869 Pictorial Issue franking for 34c rate to Peru



1061

- 1061 ☒ **15c Brown & Blue, Ty. II (119).** Horizontal pair, used with horizontal pair of **2c Brown (113)**, tied by circular cork cancels and "Portchester N.Y. Jan. 20" (1870) duplex datestamp on cover **to Lima, Peru**, red "24" credit handstamp, blue receiving backstamp (Feb. 9), 2c slightly affected from placement near edge of cover where roughly opened

VERY FINE. A STRIKING AND RARE COMBINATION OF 2-CENT AND 15-CENT 1869 PICTORIAL ISSUE STAMPS ON A 34-CENT RATE COVER TO PERU BY AMERICAN AND BRITISH PACKET—FROM THE DAVIS CORRESPONDENCE.

The 34c rate comprised 10c American Packet postage to Panama and 24c British Packet postage from Panama to Peru. The rate was reduced to 22c in March 1870..... E. 3,000-4,000

The largest 24c 1869 Pictorial multiple recorded on cover



1062

- 1062 ☒ **24c Green & Violet (120).** Vertical strip of three, top stamp small repair at top, perf flaw between top stamps, used with horizontal pair of **15c Brown & Blue, Ty. II (119)**, right stamp with right half replaced, tied by circular cork cancels and "Portchester N.Y. Dec. 20" (1869) duplex date-stamps on cover to **Lima, Peru**, red crayon "3" also ties strip, red crayon "72 / 3" credit for triple 34c rate (\$1.02 postage), receiving backstamp, cover with small piece added at top

VERY FINE APPEARANCE. A RARE FRANKING PAYING THREE-TIMES THE 34-CENT RATE TO PERU. THIS IS THE LARGEST RECORDED MULTIPLE OF THE 24-CENT 1869 PICTORIAL ISSUE ON A COVER. A MAGNIFICENT COVER FROM THE DAVIS CORRESPONDENCE.

The story of the "Portchester Find" was first told by Elliott Coutler in the 1982 *Register* and summarized by Michael Laurence in his book on the 10c 1869 Issue. Probably the most plausible explanation is that two workmen found the cache of covers in a building that was about to be demolished, and they split them equally. This theory is supported by the fact that the covers made their way to market in more than one batch.

The single rate to Peru was 34c up to March 1870, when the rate was lowered to 22c. The remarkable franking on this cover pays the triple 34c rate in effect at the time of sending. The letter was carried from New York to Aspinwall in Panama by American Packet, then overland to the west coast of Panama and down to Lima by British Packet via Callao.

The \$1.02 total postage on this cover could have been prepaid with 90c and 12c 1869 stamps, but the strip of three 24c 1869 stamps is equally rare on cover.

Ex Walske..... E. 10,000-15,000

1063



1064



1065 and detail of backstamp



- 1063 ☒ **10c Yellow (116).** Bright shade, manuscript cancel and "No. Colebrook Ct. May 15" (ca. 1869) manuscript postmark, tied by red "N. York U.S. Pkt. 8 May 23" 8c credit datestamp on cover to naval officer on board U.S. Flag Ship *Lancaster* at **Montevideo, Uruguay**, docketed by another naval officer at Montevideo, Very Fine, the rate to Uruguay was 18c by American and British Packets, although underpaid, the New York exchange office credited the British P.O. with 8c for their normal share of postage (this credit marking is extremely rare), ex Juhring and Coulter, with 1978 and 2016 P.F. certificates E. 1,000-1,500
- 1064 ☒ **10c Yellow (116).** Bright color, tied by "N. York Steamship Nov. 22" (1870) circular datestamp on cover **from Montevideo, Uruguay**, to Pottsville Pa., with original multi-page enclosure **date-lined "Lancaster, Montevideo, Oct. 9, 70"**, slightly reduced at right and minor edge tears, Very Fine, the U.S. Flagship *Lancaster* was on a tour of duty in South America at this time, mail from U.S. naval vessels was sent by one of the contract mail steamers to New York (thus the 10c rate), we are aware of only one other 1869 Pictorial Issue originating in Montevideo, which is illustrated in an article by Richard Graham on the *Lancaster* (*Chronicle* 94)..... E. 750-1,000
- 1065 ☒ **10c Yellow (116).** Horizontal pair, tied by "N. York Steamship Aug. 2?" (1870) circular datestamp on cover **from the U.S. Flag Ship Lancaster in South America** to Pottsville Pa., back of cover with bold strike of large blue "U.S. Flagship Lancaster Jul. 12, 1870" oval datestamp, slightly reduced at left, Very Fine and scarce, the U.S. Flagship *Lancaster* was on a tour of duty in South America at this time, mail from U.S. naval vessels was sent by one of the contract mail steamers to New York, this was charged double the 10c rate, the *Lancaster* is discussed in an article by Richard Graham (*Chronicle* 94) E. 1,000-1,500

GREAT BRITAIN



- 1066 ☒ **2c Brown (113)**. Choice centering, tied by quartered cork cancel, indistinct New Orleans datestamp on folded printed circular dated August 21, 1869, **to Liverpool, England**, minor splitting along folds, Very Fine and attractive use for the 2c circular rate, ex Gibson E. 100-150
- 1067 ☒ **2c Brown (113)**. Used with three **10c Green, F. Grill (96)**, tied by segmented cork cancels, "New-York F Apr. 2" (1870) circular datestamp on **registered cover to Farnham, England**, red "New York Registered Apr. 3" circular datestamp also ties 2c, red London registry markings, some edgewear, stamps affected from placement near edge including middle 10c diagonal crease, 2c small tear at bottom left, cover with paper strip sealing tear at top from opening, otherwise Fine, scarce franking for double 12c rate plus 8c registry fee, with 2015 P.F. certificate.... E. 750-1,000
- 1068 ☒ **6c Ultramarine (115)**. Vertical pair, used with **2c Red Brown (146)**, straight edge at right, cancelled by grids, indistinct strike of "Emporia Kan. ? 18" circular datestamp with manuscript over the postmark on **registered cover to Macclesfield, England**, manuscript registry numbers, transit and receiving backstamps (Mar. 9, 1871), bottom 6c stamp internal crease, still Very Fine, double 6c rate plus 8c registry fee, with 2009 P.F. certificate E. 750-1,000
- 1069 ☒ **3c Ultramarine (114)**. Block of four, tied by circle of wedges cancels, "Buffalo N.Y. Jun. 10" (1869) circular datestamp on cover with Dry Goods dealer's corner card **to Sedberg, England**, red "New York Paid All Jun. 12" circular datestamp, transit and receiving backstamps, stamps slightly affected from placement near edge of cover, still Very Fine and scarce franking to pay the 12c rate E. 300-400



1070

- 1070 ☒ **3c Ultramarine (114).** Tied by **apple green** cork cancel, matching "Owego N.Y. Nov. 7" (1869) circular datestamp on cover **originating in England**, sent to Owego N.Y. and **forwarded** to Annapolis Md., origination postage paid by **Great Britain, 1864, 1p Red (33) and 1867, 10p Brown (53)**, tied by "A26" in barred oval handstamps, red "London Paid OC 25 69" circular datestamp, red "2 Cents" credit handstamp, slightly reduced at left, 3c stamp lifted and hinged back in place, still Very Fine use from England and forwarded with the 3c stamp cancelled in green, with 1983 P.F. certificate E. 750-1,000



1071

- 1071 ☒ **6c Ultramarine (115).** Horizontal pair, tied by crossroads cancels, "San Antonio Tex. Jan. 10" (1870) circular datestamp on cover **to Kentshire, England and forwarded to Walden, England**, red "New York Jan. 22" circular datestamp, forwarding postage paid by **Great Britain, 1864, 1p Red (33)**, tied by "61" in barred oval and "Bedford FE 3 70" circular datestamp, Fine, attractive combination on a forwarded cover E. 500-750



- 1072 ☒ **6c Ultramarine (115).** Tied by open grid cancel, "Hoosick N.Y. Dec. 30" (1870) circular datestamp on **mourning cover to London, England**, red "New York Dec. 31" circular datestamp, fresh and Very Fine, with 2015 P.F. certificate E. 100-150
- 1073 ☒ **6c Ultramarine (115).** Tied by quartered cork cancel, "Washington D.C. Feb. 28" (1870) circular datestamp on cover to U.S.S. *Richmond*, European Squadron, **London, England**, red New York and London circular datestamps, unusually clear strike of red "**United States Despatch Agent, B. F. Stevens, London, Mar. 14, 1870**" oval datestamp, slightly reduced at right where small cover repair, barely noticeable, Very Fine and attractive example of mail forwarded to U.S. naval personnel by B. F. Stevens, the U.S. Despatch Agent..... E. 150-200
- 1074 ☒ **12c Green (117).** Tied by quartered cork cancel, "Washington D.C. Nov. 11" (1869) circular datestamp on cover to **Stourbridge, Worcestershire, England**, red "New York Nov. 13" circular datestamp, neat Stourbridge backstamp, barely reduced at right, cover expertly repaired, Very Fine appearance, with 1976 P.F. certificate..... E. 200-300
- 1075 ☒ **12c Green (117).** Cancelled by circle of small wedges and tied by "Evansville Ind. Dec. 20" circular datestamp on cover to **London, England**, addressed to sailor on the U.S. Frigate *Franklin*, red "**United States Dispatch Agent, B. F. Stevens, London, Jan. 3, 1870**" oval datestamp, red New York datestamp also ties stamp, fresh and Very Fine..... E. 200-300

BRITISH ISLES



1076

- 1076 ☒ **3c Ultramarine (114)**. Pair, tied by target cancels, "New Providence Ioa. Feb. 3" (1870) circular datestamp on small cover to **Dublin, Ireland**, backstamped Montreal (Feb. 8), red New York transit (Feb. 12), forwarded to Belfast with **Great Britain, 1864, 1p Red (33)** tied by Dublin duplex datestamp and diamond numeral grid, "H. & A. Pct. A Fe 24 3 1870" and Belfast (Feb. 25) backstamps, repaired tear at top clear of stamps, otherwise Fine, evidently sent by Chicago exchange office to Montreal for an Allan Line sailing but redirected to New York, illustrated in Rose book (p. 56) and Forster article on mixed frankings (1982 *Register*, p. 93), ex Coulter E. 750-1,000



1077

- 1077 ☒ **2c Brown (113)**. Used with horizontal pair and single of **3c Green, H. Grill (136)**, stamps cancelled by identical segmented corks, "San Francisco Registered Aug. 31" (1870) circular datestamp on 3c Pink entire (U58) to **Galway, Ireland**, manuscript registry numbers, receiving backstamp, right stamp in 3c pair faulty, some restoration to the entire, still Very Fine appearance, attractive registered use from San Francisco to Ireland, with 2010 P.F. certificate E. 300-400



- 1078 ☒ **2c Brown (113).** Vertical strip of three, tied by segmented cork cancels and red "New York Apr. 16" (1870) circular datestamp on cover **to Dublin, Ireland**, receiving backstamp, fresh and Very Fine, an unusual franking to pay the 6c rate E. 200-300
- 1079 ☒ **12c Green (117).** Horizontal pair, tied by large circle of wedges cancel, red "Boston Paid Dec. 7" (1869) circular datestamp on cover **to Dublin, Ireland**, receiving backstamp (Dec. 18), Very Fine double-rate use E. 300-400
- 1080 ☒ **1869 Pictorial Covers to Canada and Scotland.** Three, including 3c Ultramarine (114) from Cleveland to Canada, similar use of 6c but short paid and due 10c, last is 6c cancelled by Star fancy cancel from New York to Scotland, few small faults, Fine-Very Fine group..... E. 200-300

FRANCE

FRANCE



1081

- 1081 ☒ **2c Brown (113)**, Tied by quartered cork cancel on **2c Black on Light Manila, Die 4, Wrapper (W57)**, similarly cancelled, **to Bordeaux, France**, red “Etats-Unis Paq. Fr. H No. 2” Ligne H octagonal datestamp, receiving backstamp, Very Fine, an extraordinarily rare combination of the 1869 Pictorial Issue and a 2c Black Jack wrapper to pay the 4c printed matter rate to France, ex Dr. Burrows, with 2004 P.F. certificate..... E. 1,000-1,500



1082


1083

- 1082 ☒ **2c Brown (113)**. Tied by segmented cork cancel on manila wrapper **to Soissons, France**, red “15c” centimes due marking, “Soissons 9 Sept. 69” backstamp, Very Fine and attractive wrapper sent at the 2c printed matter rate..... E. 200-300
- 1083 ☒ **3c Ultramarine (114)**. Horizontal strip of four, tied by target cancels, “Franklin Depot Va. Jul. 3” (1869) circular datestamp on yellow cover **to Pau, France**, stamps tied by neat strike of “INSUFFICIENTLY PAID” straightline handstamp, New York 24c debit datestamp, blue Cherbourg arrival datestamp, bold “16” decimes due handstamp, Very Fine and unusual, 12c postage underpaid the 15c rate to France, thus treated as completely unpaid, with 2000 P.F. certificate E. 300-400



- 1084 ☒ **3c Ultramarine (114).** Horizontal strip of five, corner crease at bottom left, tied by segmented cork cancels and **purple** "Philadelphia 3 Oct. 25" (1869) 3c credit datestamp on small narrow cover **to Paris, France**, red "PD" framed handstamp, blue Cherbourg arrival datestamp (Nov. 6) ties strip, backflap removed, still Very Fine, desirable 15c treaty rate use with the distinctive and scarce purple credit marking of Philadelphia, ex Gibson and Coulter..... E. 400-500
- 1085 ☒ **3c Ultramarine (114).** Vertical strip of five, straight edge at right, tied by bold crossroads cancels, light strike of red New York 6c credit datestamp on 1869 tissue-paper cover **to Paris, France and forwarded to Lausanne, Switzerland**, large "Munroe & Co. Paris" oval handstamp, forwarding postage paid by **France, 1867, 30c Brown on Yellowish (34)**, tied by "8" dotted star cancel, Paris double-circle datestamp (Jun. 20, 1869), Lausanne receiving backstamp (Jun. 21), cover opened roughly at right where restored, righthand stamps small faults, otherwise Fine, an attractive forwarded use..... E. 400-500
- 1086 ☒ **15c Brown & Blue, Ty. I (118).** Tied by circle of wedges cancel, "New Orleans La. Nov. 8" (1869) circular datestamp on bright buff cover **to Metz, France**, red "New York Paid 12 Nov. 13" 12c credit datestamp, red "Etats-Unis Paq. Fr. H No. 3 13 Nov 69" Ligne H octagonal datestamp and red "PD" framed handstamp, receiving backstamps, stamp with small corner creases, vertical file fold at center, still Very Fine and attractive use of the 15c Type I to France, signed Ashbrook, with 1974 P.F. certificate..... E. 400-500



- 1087  **15c Brown & Blue, Ty. II (119).** Tied by circle of wedges cancels, red “New York Paid 6 Aug. 26” (1869) 6c credit datestamp on cover **to Paris, France and forwarded to Baden-Baden, Germany**, red and black “PD” framed handstamps, Munroe & Co. forwarder’s handstamp, forwarding postage paid by **France, 1867, 30c Brown on Yellowish (34)** tied by “3” dotted star cancel, bold “Paris Pl. De La Madeleine 6E 7 Sept. 69” double-circle datestamp, Strasbourg and receiving backstamps, 15c small corner creases, cover with small corner repair at top left
- VERY FINE USE TO FRANCE AND FORWARDED TO GERMANY, WITH FORWARDING POSTAGE PAID BY THE FRENCH STAMP. MIXED-COUNTRY FRANKINGS ARE SCARCE.
- With 2019 P.F. certificate..... E. 2,000-3,000



- 1088 **15c Brown & Blue, Ty. II (119).** Two vertical pairs, bottom stamp rounded corner, cancelled by targets, tied by light strike of circular datestamp at right, red "Providence R.I. Dec. 10" (1869) double-circle datestamp with matching "PAID" in circle handstamp on cover **to Menton, France**, red "Etats-Unis Paq. Fr. H No. 1 11 Dec. 69" Ligne H octagonal datestamp and "PD" framed handstamp applied aboard the French ship on the day it left New York, carried on the French Line *Pereire*, departing New York Dec. 11, 1869, arriving Havre Dec. 23, transit and receiving backstamps, receipt docketing at left, with original enclosure, stamps slightly affected from placement near edge
- VERY FINE. A BEAUTIFUL AND RARE QUADRUPLE-RATE FRANKING OF THE 15-CENT TYPE II 1869 PICTORIAL ISSUE, CARRIED DIRECTLY BY FRENCH PACKET FROM NEW YORK.
- We have offered only one other similar franking, ex Eubanks. E. 3,000-4,000

A rare 24c 1869 Pictorial Issue cover to France



1089

- 1089 ☒ **24c Green & Violet (120)**. Rich color, used with two **3c Ultramarine (114)**, one straight edge at left, tied by segmented cork cancels, "New Orleans La. Nov. 1" (1869) circular datestamp on folded cover **to Paris, France**, sender's blue oval datestamp, red "New York Paid 12 Nov. 6" 12c credit datestamp, blue Calais arrival datestamp (Nov. 18) ties one 3c stamp, red "PD" framed handstamp, light vertical file fold affects 24c stamp

VERY FINE APPEARANCE. AN EXTREMELY RARE USE OF THE 24-CENT 1869 PICTORIAL ISSUE ON A COVER TO FRANCE. ONLY FIVE EXAMPLES TO FRANCE ARE RECORDED.

The 24c is far scarcer on cover to France than the 30c. While the 30c paid the double 15c rate, the 24c did not pay any French mail rate unless combined with other stamps. Only five covers are recorded in the PRA census, and this is the first we have offered since keeping computerized records. A similar cover from the same correspondence is illustrated in the Laurence 10c 1869 book (p. 155).

Ex Krug. Signed Ashbrook. E. 7,500-10,000

FRANCE

A beautiful and choice quality 30c 1869 Pictorial Issue cover to France



1090

- 1090 ☒ **30c Ultramarine & Carmine (121).** Tied by circle of wedges cancel, red "New York Paid 12 Dec. 2" (1869) 12c credit datestamp on cover **to Nice, France**, red "PD" framed handstamp—carried on the *Inman City of Brussels*, departing New York Dec. 4, 1869, arriving Dec. 13—blue Calais arrival datestamp, Paris and receiving backstamps, addressed "*Poste Restante*" with forwarding notation
 VERY FINE. A COVER OF IMPECCABLE QUALITY, BEARING THE 30-CENT 1869 PICTORIAL ISSUE PAYING THE DOUBLE TREATY RATE TO FRANCE.
 Signed Ashbrook. With 1989 P.F. certificate..... E. 15,000-20,000



- 1091 ☒ **10c Yellow (116).** Tied by quartered cork cancel, "New Orleans La. Jun. 29" (1870) circular datestamp on folded letter **to Bordeaux, France**, red "New York Jul. 5" circular datestamp, carried on the HAPAG *Allemania*, departing New York Jul. 5, arriving Plymouth Jul. 16, bold "8" decimes due handstamp, receiving backstamp, Very Fine, paid to the French border..... E. 300-400
- 1092 ☒ **10c Yellow (116).** Vibrant color, tied by segmented cork cancel, "New Orleans La. Feb. 8" (1870) circular datestamp on cover with printed return address **to Mulhouse, France**, red New York circular datestamp, bold "8" decimes due handstamp, transit and receiving backstamps, Very Fine, paid to the French border..... E. 300-400
- 1093 ☒ **10c Yellow (116).** Vivid color, tied by segmented cork cancel, red "New-York Mar. 5" (1870) circular datestamp on folded letter **to Chambéry, France**, carried on the French Line *St. Laurent*, departing New York Mar. 5, 1870, arriving Havre Mar. 17, "Etats-Unis Paq. Fr. H No. 4 5 Mars. 70" Ligne H octagonal datestamp applied aboard the French ship on the day it left New York, "8" decimes due handstamp, transit and receiving backstamps, stamp with corner crease at top left, otherwise Very Fine, paid to the French border E. 300-400



1094

- 1094 ☒ **10c Yellow (116).** Horizontal strip of three, tied by segmented cork cancels, "Buffalo N.Y. Jan. 1" (1870) circular datestamp on cover **to Paris, France**, red "New York Jan. 4" circular datestamp alongside one dated Dec. 4 in error, carried on the HAPAG *Hammonia II*, departing New York Jan. 4, 1870, arriving Plymouth Jan. 14, blue Cherbourg arrival datestamp, bold "16" decimes due handstamp also ties stamps, right stamp small tears at upper right, otherwise Very Fine and attractive, mailed on the first day after expiration of the treaty rate with France, probably prepaid for two-times the expired 15c treaty rate, but treated as paid only to the border, ex Juhring, with 2013 P.F. certificate..... E. 1,000-1,500



1095

- 1095 ☒ **10c Yellow (116).** Radiant color, tied by quartered cork cancel, "Richmond Ind. Dec. 13" (1869) circular datestamp on small cover **to Paris, France, forwarded to Naples, Italy, and forwarded again to Messina, Italy**, accepted for the 15c rate with red "New York Paid 6 Dec. 16" 6c credit datestamp (month inverted), carried on the Inman *City of Brooklyn*, departing New York Dec. 18, 1869, arriving Liverpool Dec. 28, red "PD" framed handstamp, forwarding postage paid by **France, 1868, 40c Pale Orange on Yellowish (35)**, tied by "22" dotted star cancel, Dec. 30 Paris circular datestamp, Naples and Messina backstamps, "Cailler Walker & Co. Messina" blue oval handstamp at upper left, cover with small opening tear at top

VERY FINE. AN ATTRACTIVE AND RARE SHORT-PAID USE TO FRANCE, ACCEPTED AS FULLY PREPAID AND THEN FORWARDED TO NAPLES, ITALY, AND AGAIN WITHIN ITALY, WITH FORWARDING POSTAGE PAID BY THE FRENCH STAMP.

Ex Gibson. With 1977 P.F. certificate E. 2,000-3,000

Rare use of 1c 1869 stamps to pay 4c British Open Mail rate to France



1096

- 1096 ☒ **1c Buff (112).** Two horizontal pairs, tied by quartered cork cancels, "New Orleans La. Apr. 8" (1870) circular datestamp on blue tissue-paper cover **to Bordeaux, France**, red "New-York Apr. 13" circular datestamp also ties stamps, bold strike of "GB/40c" Anglo-French accountancy handstamp, carried on the Cunarder *Calabria*, departing New York Apr. 13, 1870, arriving Queenstown Apr. 23, Calais arrival datestamp ties stamps, "5" decimes due handstamp, London, Paris and receiving backstamps

VERY FINE. A BEAUTIFUL AND RARE ONE-CENT 1869 PICTORIAL FRANKING FOR THE 4-CENT BRITISH OPEN MAIL RATE TO FRANCE.

This is one of the finest of the few 1c 1869 covers franked for the 4c British Open Mail rate. Postage was paid to England, and the recipient paid 5 decimes on arrival. We are aware of only one other similar franking, offered in our Dr. Heimbürger sale..... E. 7,500-10,000

Extraordinary 1869 Pictorial franking for double 4c British Open Mail rate to France



1097

- 1097 ☒ **1c Buff (112).** Horizontal pair, used with horizontal pair of **3c Ultramarine (114)**, tied by quartered cork cancels, "New Orleans La. Mar. 31" (1870) circular datestamp on cover with printed address to **Paris, France**, red "New-York Apr. 5" circular datestamp, carried on the Cunarder *Java*, departing New York Apr. 6, 1870, arriving Queenstown Apr. 15, clear strike of "GB/40c" Anglo-French accountancy handstamp, Calais arrival datestamp (Apr. 16), "15" decimes due handstamp, stamps with faults including tears

VERY FINE APPEARANCE. A RARE 1869 PICTORIAL ISSUE FRANKING PAYING THE DOUBLE 4-CENT BRITISH OPEN MAIL RATE TO FRANCE.

This cover is part of a group with the same printed address to John Fleming, which was offered in our Sale 320 in August 1967. The franking is remarkably rare. It paid double-rate postage to England, and the recipient paid 15 decimes for triple-rate postage to France (a different weight class).

Ex Wunsch..... E. 4,000-5,000

An extremely rare 1869 Pictorial “Phantom Rate” cover to France with 8c credit



1098

- 1098 ☒ **10c Yellow (116).** Used with two **3c Ultramarine (114)**, tied by segmented cork cancels and “Chicago Ill. Jun. 17” (1870) circular datestamp on cover **to Lyon, France**, red “New York Jun. 21” backstamp and matching “**8**” **cents credit** handstamp, carried on the Cunarder *Scotia*, departing New York Jun. 22, 1870, arriving Queenstown Jun. 30, red London Paid datestamp (Jul. 2), red “PD” in oval handstamp, Calais and Lyon circular datestamps, missing part of top flap, stamps slightly affected from placement near edge of cover

VERY FINE. ONLY A FEW COVERS ARE KNOWN SHOWING THE 8-CENT CREDIT TO ENGLAND ON FRENCH MAIL SENT DURING THE SHORT-LIVED PHANTOM RATE PERIOD.

The 1857 U.S.-French postal treaty expired on December 31, 1869, making it difficult to fully prepay postage between the two countries, and impossible to fully prepay postage to France with U.S. stamps alone, with the exception of the unannounced “Phantom Rate” from New York via British mails. The rate was never announced, but was listed in the international rate tables under Algeria, which was considered a part of France—thus, the moniker “Phantom.”

The sender probably affixed stamps to prepay the expired 15c treaty rate (1c overpaid). The original 12c Phantom Rate was formulated from the 4c U.S.-G.B. Open Mail and the 8c (4 pence) G.B.-France rates added together. On July 1, 1870, the Phantom Rate was reduced to 10c, in accordance with the new Anglo-French convention, which reduced the rate between Great Britain and France to the equivalent of 6c.

1869 Phantom Rate covers with the 8c credit are much rarer than covers with the 6c credit. A Power Search review found only three others with an 8c credit. E. 4,000-5,000

FRANCE



1099

- 1099 **10c Yellow (116).** Radiant color, tied by three-segment cork cancel, light strike of “Nashville Ten. Aug. 4” (1870) circular datestamp on small cover **to Paris, France**, red “New York Paid All Br. Transit Aug. 10” circular datestamp, carried on the Cunarder *Russia*, departing New York Aug. 10, 1870, arriving Queenstown Aug. 19, red London Paid datestamp (Aug. 22), red “PD” in oval handstamp, red “6” credit handstamp, Calais arrival datestamp (Aug. 23), Very Fine example of the elusive Phantom Rate—effective July 1, 1870, the new Anglo-French postal convention reduced the rate between Great Britain and France to 3p per 10 grams, which in turn reduced the Phantom Rate from 12c to 10c (credit reduced from 8c to 6c)..... E. 500-750



1100

- 1100 ☒ **10c Yellow (116).** Well-centered, deep shade, tied by quartered cork cancel, “Washington D.C. Feb. 7” (1870) circular datestamp on small cover addressed **to Clara Barton at Ajaccio on the Island of Corsica**, red New York (Feb. 8) and blue Cherbourg (Feb. 21) datestamps, over the 10-gram weight limit and marked with “16” decimes due handstamp, transit and receiving backstamps, some arithmetic notes on back and front
VERY FINE. AN ATTRACTIVE AND SCARCE USE TO CLARA BARTON ON THE ISLAND OF CORSICA.
In 1869 Clara Barton traveled to Europe and worked with the International Red Cross during the Franco-Prussian War.
Ex Coulter. With 2009 P.F. certificate..... E. 2,000-3,000

PORTUGAL AND SPAIN

The only recorded 1869 Pictorial Issue cover to the Azores



1101

- 1101 ☒ **12c Green (117)**. Two, used with pair of **2c Red Brown (146)**, tied by quartered cork cancels and "Fall River Mass. Nov. 18" (1870) duplex circular datestamp on small cover to **Fayal, Azores**, sender's directive "*By Bark Fredonia*", red "New York 24 [Nov] 19" 24c credit datestamp, red London Paid datestamp (Nov. 30), "FRANCA" oval handstamp and matching Lisbon (Dec. 8) backstamp, Horta (Dec. 22) receiving datestamp also on back, opening tear across center of cover, stamps have minor faults

FINE APPEARANCE. THIS IS THE ONLY RECORDED 1869 PICTORIAL ISSUE COVER TO THE AZORES. A PHENOMENAL POSTAL HISTORY RARITY.

Horta is the main city on the Island of Faial (Fayal), a part of the Azorean archipelago. It lies in the Atlantic about 500 miles from Lisbon, one of the transit post offices in this cover's journey from the United States.

Ex Wunsch and Coulter..... E. 4,000-5,000

Extraordinary mixed-issue franking and rare 1869 Pictorial Issue cover to Madeira



1102

- 1102 ☒ **2c Brown (113)**. Straight edge at left, used with **10c Yellow Green, F. Grill (96) and 15c Black, F. Grill (98)**, tied by segmented cork cancels, purple "Phila. Paid All Aug. 3" (1869) circular datestamp on cover **to Funchal, Madeira**, addressed to Lt. Commander Crowell on the U.S. Practice Ship *Macedonian*, carried on the Cunarder *China*, departing New York Aug. 4, 1869, arriving Queenstown Aug. 13, red crayon "18" credit, blue Calais arrival datestamp (Aug. 15) and matching "PD" framed handstamp, 2c also tied by "FRANCA" in oval handstamp, Philadelphia and Lisbon backstamps, cover repairs slightly affecting stamps

FINE APPEARANCE. A PHENOMENAL THREE-COLOR MIXED-ISSUE FRANKING, WHICH PREPAYS THE 27-CENT FRENCH MAIL RATE TO MADEIRA. THIS IS THE ONLY 1869 PICTORIAL ISSUE COVER TO MADEIRA THAT IS ACCEPTED AS GENUINE.

Madeira is an island off the west coast of northern Africa, belonging to Portugal. This cover is addressed to the "U.S. Practice Ship *Macedonian*", which was decommissioned as a fighting ship and served as a training ship after the Civil War.

The only other 1869 cover to Madeira was declared not genuine by The Philatelic Foundation many years ago (we thought it was genuine then, and still do) E. 3,000-4,000



1103

- 1103 ☒ **10c Yellow (116).** Radiant color, tied by segmented cork cancel and "New Orleans La. May 6" (1869) circular datestamp on blue folded letter to **Yqualada, Spain**, red "New York U.S. Pkt. May 11" circular datestamp, clear strike of "PAID-ONLY TO ENGLAND" handstamp, bold red "4R" due handstamp, London and receiving backstamps, couple toned spots, Very Fine, a scarce example of the 10c Open Mail rate paid only to England, the Laurence book (p. 127) records only five covers with the 10c 1869 paying this rate E. 1,500-2,000



1104

- 1104 ☒ **10c Yellow (116).** Horizontal pair, some perf separations, tied by quartered cork cancels, "Newport R.I. Jul. 5" (1870) circular datestamp and red "PAID" and "20" handstamps on small cover to **Malaga, Spain**, red "New York Paid All Br. Transit Jul. 6" circular datestamp, red "12" credit handstamp, red "PD" in oval handstamp, receiving backstamp, minor edgewear, Fine, unusual use of 10c 1869 pair overpaying 16c British Mail rate to Spain via France E. 750-1,000

The only recorded cover to Spain with the 1869 15c Type I



1105

- 1105 ☒ **15c Brown & Blue, Ty. I (118).** Used with **6c Ultramarine (115)**, cancelled by rosettes, 6c tied by red "New York Paid May 11" (1869) circular datestamp on folded cover **to Madrid, Spain**, sender's directive "*Per Cambria*", carried on that HAPAG steamer, departing New York May 11, 1869, arriving Havre May 23, red crayon "9" credit, both stamps tied by blue Havre octagonal arrival datestamp with matching "PD" framed handstamp, red "4R" handstamp, horizontal file fold well away from stamps

VERY FINE. THE ONLY RECORDED USE OF THE 15-CENT TYPE I ON A COVER TO SPAIN. THIS PAYS THE SHORT-LIVED 21-CENT RATE VIA FRENCH MAIL.

The 21c French Mail rate to Spain ended December 31, 1869, so it was only in effect for a short time during the life of the 1869 Pictorial Issue. We are unaware of any other 1869 Pictorial Issue covers paid at this rate.

With 1996 P.F. certificate..... E. 5,000-7,500

A beautiful three-color 1869 Pictorial Issue franking to Spain



1106

- 1106 ☒ **15c Brown & Blue, Ty. II (119).** Used with **1c Buff (112)** and **12c Green (117)**, 1c with light natural paper fold, tied by quartered cork cancels, "New Orleans La. Jun. 22" (1870) circular datestamp on bright buff cover **to Barcelona, Spain**, red "New York Paid All Br. Transit Jun. 28" backstamp, red "24" credit handstamp, red London Paid datestamp (Jul. 9), red "PD" in oval handstamp, red crayon "2" credit to Spain, 12c light crease at top right

VERY FINE. AN EXCEEDINGLY RARE THREE-COLOR 1869 PICTORIAL COMBINATION FRANKING TO SPAIN.

Effective January 1870 the rate to Spain via British Mail for a letter weighing 7.5-15 grams was 28c, with 24c credited to Great Britain. The components of the single 16c rate were the U.S. 4c British Open Mail rate and a 12c credit to Great Britain — the latter advanced in 7.5 gram weight steps, so the 4c rate on this 7.5-15 gram letter remained the same, but 24c was required as a credit..... E. 3,000-4,000

Rare and attractive 15c 1869 mixed-issue franking on cover to Spain



1107

1107 ☒ **15c Brown & Blue, Ty. II (119).** Used with **1c Ultramarine (145)**, tied by cork cancels, purple "Philada. Paid Jun. 17" (1870) circular datestamp on cover **to Madrid, Spain and forwarded to Barcelona**, red London Paid (Jun. 29) and Madrid datestamps also tie stamps, red crayon "12" credit, some ink smearing in address

FINE. AN EXTREMELY RARE 15-CENT 1869 PICTORIAL AND BANK NOTE ISSUE COMBINATION FRANKING TO SPAIN.

The 1869 15c Type II and 1870 1c Bank Note stamps pay the 16c British Mail rate via France. The 1869 PRA Census records only five 15c Type II covers to Spain—the cover offered here is not listed in the census.

With 2008 P.F. certificate..... E. 1,500-2,000

GERMANY

GERMANY

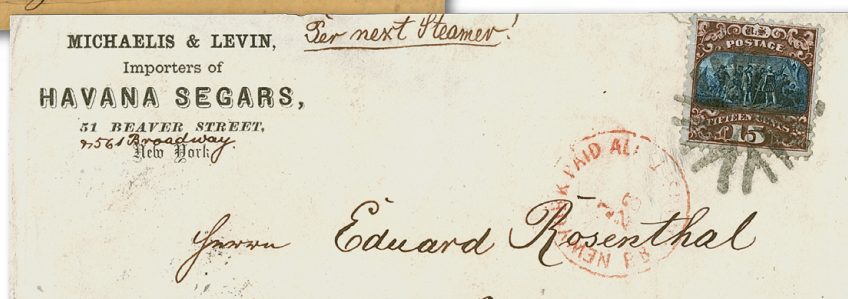


- 1108 ☒ **1c Buff (112).** Tied by segmented cork cancel on **2c Black Jack on buff wrapper (W55)**, identical cancel, **to Berlin, Germany**, partly clear strike of **"SHORT PAID"** at right, blue crayon **"2"** crossed out and rerated to **"3"**, receiving backstamp, Very Fine and attractive short-paid use charged triple the 2c circular rate to Germany..... E. 500-750
- 1109 ☒ **3c Ultramarine (114).** Vertical pair, tied by quartered cork cancel and straightline **"PAID A(LL)"** on wrapper for **The Medical Gazette to Munich, Germany**, **"Munchen 2 Jul. 1869"** backstamp, Very Fine, an attractive printed matter use, ex Juhring and Cutts..... E. 300-400
- 1110 ☒ **3c Ultramarine (114).** Tied by target cancel, light strike of **"Harrison Tenn. Sep. ?"** (1869) circular datestamp on cover **to Berlin, Germany**, 3c postage paid only the domestic rate per the US-NGU convention, the New York post office chose to send this via closed mail thru England, carried by NGL *Hermann*, departing New York Sep. 25, 1869, arriving Bremen Oct. 10, cursive blue **"ungen, gend/frankirt"** (insufficiently franked) handstamp also ties stamp, various due markings culminating in **"6¼"** due for insufficient postage plus 2sgr fine, fresh and Very Fine, the rate for letters carried direct was 10c, insufficiently paid letters were charged the deficient amount plus a 2sgr fine, with 2014 P.F. certificate E. 500-750

GERMANY



1111



1112



1113

- 1111 ☒ **15c Brown & Blue, Ty. II (119).** Tied by **Negative Star** fancy cancel, "Johnstown Pa. 17 Sep." (1869) circular datestamp on buff cover **to Rottenburg, Wurttemberg, Germany**, red "New York Paid All Br. Transit Sep. 21" circular datestamp, receiving backstamp (Oct. 6), slight overall wear, stamp with corner crease at top right, Fine, sent by North German Union Closed Mail via England..... E. 500-750
- 1112 ☒ **15c Brown & Blue, Ty. II (119).** Tied by circle of Vs cancel, red "New York Paid All Br. Transit Jul. 23" circular datestamp on cover with printed return address for Havana cigar importer **to Bromberg, North Germany**, light strike of receiving backstamp, slightly reduced and small expert repair at top, Very Fine appearance, 15c rate via North German Union Closed Mail, Bromberg is now part of Poland..... E. 400-500
- 1113 ☒ **15c Brown & Blue, Ty. II (119).** Two, cancelled by quartered corks, "Greencastle Pa. Dec. 9" (1869) circular datestamp on yellow cover **to Berlin, Prussia**, one stamp tied by red "New York Paid All Br. Transit Dec. 11" circular datestamp, sender's directive "via England Closed Mail", carried on the Inman *City of Paris*, departing New York Dec. 11, 1869, arriving Queenstown Dec. 21, red "Verviers Coeln Franco" datestamp, transit and receiving backstamps, slightly reduced at left, Very Fine double-rate cover via North German Union Closed Mail, ex Krug..... E. 500-750



- 1114 ☒ **2c Brown (113)**. Five singles, one straight edge at right, slightly overlapping and tied by circle of wedges cancels, red "New York Paid All Direct Dec. 2" (1869) circular datestamp on blue cover **to Hanover, Germany**, red "Bremen Franco" framed datestamp, receiving backstamp (Dec. 15), minor edgewear, Very Fine and impressive franking to pay the 10c rate via North German Union Direct via Bremen or Hamburg E. 500-750
- 1115 ☒ **10c Yellow (116)**. Rich color, tied by "PAID" with Stars in grid fancy cancel, matching "Dedham Mass. Aug. 18" (1869) circular datestamp on cover **to Heidelberg, Germany**, red "New York Paid All Br. Transit Aug. 20" circular datestamp, receiving backstamp (Sep. 2), slightly reduced at left, minor toning, Very Fine, unusual fancy cancel on 10c 1869, paying the 10c direct rate to Germany via Bremen or Hamburg E. 200-300
- 1116 ☒ **10c Yellow (116)**. Cancelled by quartered cork and just tied by "Washington D.C. Dec. 4" (1869) circular datestamp on cover with "Supreme Court of the United States" imprint, **to Gotha, Germany**, red "New York Paid All Direct Dec. 7" circular datestamp, red "Hamburg Franco" framed datestamp, receiving backstamp, fresh and Very Fine use paying the 10c direct rate to Germany via Bremen or Hamburg, signed Ashbrook and with his letter describing this as "a beautiful and highly desirous [sic] cover" E. 200-300
- 1117 ☒ **10c Yellow (116)**. Tied by rosette cancel, red "New York Paid All Direct Jun. 3" (1869) circular datestamp on cover **to Naumberg, Hessen, Germany**, sender's directive "p America" and carried on that NGL ship, departing New York Jun. 3, 1869, arriving Southampton Jun. 15, red "Bremen Franco" framed datestamp, receiving backstamp, barely reduced at top, Very Fine, 10c direct rate to Germany via Bremen or Hamburg, ex Judd E. 200-300

The spectacular 1869 Pictorial Issue and Wurttemberg mixed-franking forwarded cover



1118

- 1118 ☒ **10c Yellow (116).** Rich color, tied by well-struck rosette cancel, "New York Jul. 19 3PM" (1869) circular datestamp on cover to **Lautenbach, Wurttemberg, Germany, and forwarded to Paris, France**, red "PD" handstamp at right, red "Hamburg 3/8 69 Franco" framed datestamp (Aug. 3, 1869), forwarding postage paid by two **Wurttemberg, 1859, 3kr Rose (49; Michel 38) and 7kr Blue (50; Michel 39)**, tied by "Heilbronn 7 8" circular datestamps, blue Strasbourg circular datestamp also ties one 3kr, transit and receiving backstamps

VERY FINE. A SPECTACULAR MIXED FRANKING WITH THE 10-CENT 1869 PICTORIAL PAYING THE RATE BY NORTH GERMAN UNION MAIL DIRECT TO HAMBURG, AND THE WURTTENBERG STAMPS PAYING THE FORWARDING POSTAGE TO FRANCE. ONE OF THE MOST COLORFUL 1869 PICTORIAL ISSUE COVERS IN EXISTENCE.

Illustrated and described in the Laurence 10c 1869 book (pp. 190-191). Laurence notes this was carried on the HAPAG *Allemania*, departing New York Jul. 20, 1869, arriving Hamburg Aug. 8. He also describes this as "one of the most colorful 10c 1869 covers in existence." We would broaden that to include *all* 1869 Pictorial Issue covers.

Ex Knapp, Gibson, Juhring and Ishikawa. With 1993 P.F. certificate. E. 15,000-20,000

The colorful 1869 Pictorial Issue and Baden mixed-franking forwarded cover



1119

- 1119 ☒ **10c Yellow (116).** Pretty shade, cancelled by quartered cork, "Rochester N.Y. May 31" (1870) circular datestamp on cover **to Bruschal, Baden, Germany**, red "New York Paid All Direct Jun. 2" circular datestamp, red "Bremen 15 6 70 Franco" (Jun. 15, 1870) framed datestamp, **forwarded to Maurer, Baden, Germany**, forwarding postage paid by **Baden, 1868, 3kr Rose (27; Michel 24)** tied by "Bruschal 17 Jun 12-23" circular datestamp, second strike at left, 10c stamp minor corner crease at top left

VERY FINE. A SPECTACULAR COVER WITH THE 10-CENT 1869 PICTORIAL ISSUE PAYING THE RATE BY NORTH GERMAN UNION MAIL DIRECT TO BREMEN, AND THE BADEN STAMP PAYING THE FORWARDING POSTAGE TO MAUER. THIS IS THE ONLY RECORDED MIXED FRANKING WITH THE 1869 PICTORIAL ISSUE AND ANY BADEN STAMPS.

Baden joined the North German Union in July 1870, shortly after this cover reached Bruschal. By the beginning of 1871, Baden's entire postal system was integrated into the German Reichspost.

Illustrated and described in the Laurence 10c 1869 book (p. 190). With 1967 Max Unverferth and 1978 Wolfram Seeger certificates. E. 10,000-15,000



1120

**The only recorded cover with the 30c 1869 Pictorial Issue
used in combination with the 1861-68 Issue**

- 1120 ☒ **30c Blue & Carmine (121).** Well-centered, used with **10c Green F. Grill (96)**, both stamps tied by a single clear strike of blue "Cincinnati O. Jan. 25" (1870) circular datestamp and duplex target cancel on buff cover **to Baden, Germany**, handsome printed corner card with route directive "PER STEAMER, VIA BREMEN OR HAMBURG", prepaid quadruple 10c rate, red "New York Paid All Direct Jan. 29" circular datestamp, "Bremen 10 2 70 Franco" (Feb. 10, 1870) framed datestamp, vertical fold at right, two slits and small tear in cover at bottom (sealed with hinges)

EXTREMELY FINE AND COLORFUL. THE ONLY RECORDED COVER WITH THE 30-CENT 1869 PICTORIAL STAMP USED IN COMBINATION WITH THE 1861-68 ISSUE. APTLY DESCRIBED BY STANLEY B. ASHBROOK AS "EVERYTHING THAT COULD BE DESIRED IN A 30-CENT 1869 COVER."

Illustrated in 1869 PRA Census (p. 198). From our 1970 Rarities of the World sale and ex Kuphal ("European's Large Gold Collection," Sale 819). E. 50,000-75,000



1121

- 1121 ☒ **15c Brown & Blue, Ty. II (119).** Intense shades, perfs in, used with **3c Ultramarine (114)**, each stamp tied by crossroads cancel, red “New-York Registered Feb. 26” (1870) rimless circular datestamp on cover to **Hamburg, Germany**, receiving backstamp, Very Fine, very rare registered foreign-mail usage of the 1869 Pictorial Issue—10c NGU Direct plus 8c registry fee—only two 15c Type II registered covers to Germany are recorded in 1869 PRA Census, signed Ashbrook, ex Kuphal E. 1,500-2,000



1122

- 1122 ☒ **6c Ultramarine (115).** Used with **1c Buff (112)**, tied by quartered cork cancels, “New Orleans La. Jul. 8” (1870) circular datestamp on yellow cover to **Jever, Oldenburg, Germany**, red “New York Paid All Direct Jul. 12” circular datestamp also ties 1c, red “Vervier Coeln Franco” datestamp, receiving backstamp, cover with few light scuffs, Very Fine, a rare use paying the short-lived 7c rate by North German Union Direct via Bremen or Hamburg, only five trips to Germany were made under this rate before service was suspended due to war E. 1,000-1,500

AUSTRIA AND HUNGARY



1123

- 1123 ☒ **6c Ultramarine (115)**. Used with **2c Brown (113)**, tied by large circle of diamonds segmented cork cancel on printed prices current **to Vienna, Austria**, bold red “PAID ALL” straightline handstamp, manuscript “*Pr Russia*”, receiving backstamp (Sep. 28, 1869), slightly reduced at right, fresh and Very Fine, extremely rare 1869 Pictorial use on printed matter to Europe, ex Dr. Heimbürger, with 1981 and 2013 P.F. certificates E. 1,500-2,000



1124

- 1124 ☒ **12c Green (117)**. Straight edge at right, used with **3c Ultramarine (114)**, cancelled by crossroads, “San Antonio Tex. Dec. 8” circular datestamp on cover **to Prague, Bohemia, Austro-Hungarian Empire**, red “New York Paid All Br. Transit Dec. 18” transit circular datestamp, carried on the Inman *City of Brooklyn*, departing New York Dec. 18, 1869, arriving Queenstown Dec. 27, red “Verviers Coeln Franco” datestamp, receiving backstamp, some slight overall soiling, Very Fine, 15c rate via North German Union Closed Mail E. 500-750



1125



1126



1127



1128

- 1125 ☒ **10c Yellow (116)**. Tied by bold square cork cancel, "Virginia City Nev. Feb. 7" (1871) circular datestamp on cover **to Budua, Dalmatia, Austria**, red "New York Paid All Br. Transit Feb. 17" circular datestamp, carried on Cunarder *Samaria*, departing New York Feb. 17, 1871, arriving Queenstown Feb. 28, Trieste (Mar. 6), Cattaro (Feb. 11) and Budua (Feb. 12) backstamps, small tear at top from opening and missing small part of top flap, Very Fine, Budua is in current-day Montenegro, this paid the 10c rate for North German Union Closed Mail via England, we are unaware of any others to this destination E. 750-1,000
- 1126 ☒ **2c Brown (113)**. Two, used with **3c Green (147)** and **10c Brown (150)**, two 3c, tied by segmented circular cork cancels, red "New York Paid All Br. Transit Oct. 29" (1871) circular datestamp on cover **to Vienna, Austria**, docketing and receiving datestamp on back, some perf tip gum stains, Very Fine, attractive mixed-issue franking for double 10c NGU rate to Austria, ex Coulter..... E. 500-750
- 1127 ☒ **1c Buff (112)**. Used with horizontal pair of **3c Green (147)**, tied by target cancels, "Woods Hole Mass. Aug. 28" (1871) circular datestamp on cover **to Vienna, Austria**, red "Boston Paid All Direct Aug. 29" circular datestamp with part of day slug inverted also ties 1c stamp, red "Hamburg Franco" framed datestamp, receiving backstamp, right 3c slightly affected from placement near edge of cover, Very Fine, a most unusual franking to pay the 7c rate to Austria direct via North German Union Closed Mail E. 500-750
- 1128 ☒ **10c Yellow (116)**. Tied by cork cancel, red "New York Paid All Direct Mar. 8" (1870) circular datestamp on Seed Dealer's corner card cover **to Pest, Hungary**, red "Hamburg Franco" framed datestamp, receiving backstamp, Very Fine, very unusual 1869 Issue destination, in 1873 Pest merged with Buda to form the city of Budapest E. 400-500



1129

- 1129 ☒ **15c Brown & Blue, Ty. I (118).** Well-centered, tied by segmented cork cancel on folded letter to **Zurich, Switzerland**, red "New York Paid All Br. Transit Aug. 12" (1869) circular datestamp, merchant's blue oval datestamp, Basel and Zurich backstamps, few toned perfs not noted on certificate, otherwise Very Fine, choice 15c Type I cover to Switzerland by Closed Mail via England, with 1995 P.F. certificate E. 750-1,000



1130

- 1130 ☒ **15c Brown & Blue, Ty. I (118).** Horizontal pair, cancelled by segmented corks, "Marysville Cal. Mar. 8" (1870) double-circle datestamp on buff cover to **Neuchâtel, Switzerland**, stamps tied by red "New York Paid All Br. Transit Mar. 19" circular datestamp, Basel and receiving backstamps, tiny corner perf creases, slight overall wear, Fine, scarce use of 15c Type I pair to pay double 15c rate to Switzerland by Closed Mail via England E. 1,000-1,500

SWITZERLAND



- 1131 ☒ **10c Yellow (116).** Tied by target cancel, "Bolinias Cal. Jul. 18, 1870" double-circle datestamp on buff cover **to Locarno, Switzerland**, red "New York Paid All Br. Transit Jul. 30" circular datestamp, red crayon "30" centimes emergency surtax due rate, receiving backstamp, some edgewear including small tears, Very Fine and very scarce, the war surcharge was instituted after German forces entered French provinces of Alsace and Lorraine, which obstructed the normal mail route, an emergency route was set up and a surcharge of 30 centimes was instituted on prepaid mail from the United States E. 750-1,000
- 1132 ☒ **6c Ultramarine (115).** Used with **12c Black, F. Grill (97)**, tied by cork cancels, "Petaluma Cal. Apr. 12" (1871) circular datestamp on **registered** buff cover **to Locarno, Switzerland**, red "New York Registered Apr. 22" rimless datestamp, large "CHARGE" framed handstamp, Basel, Lucerne and receiving backstamps, barely reduced at right, Very Fine, rare mixed-issue franking paying the 10c rate plus 8c registry fee E. 1,000-1,500
- 1133 ☒ **2c Brown (113).** Horizontal pair, used with two **3c Green (147)**, tied by cork cancels, matching "San Francisco Cal. Dec 5" (1871) circular datestamp on yellow Provisioners' corner card cover **to Fusio Switzerland**, red "New York Paid All Br. Transit Dec 14" circular datestamp, transit and receiving backstamps, Fine, 10c Closed Mail rate via England, signed Diena E. 750-1,000

SWITZERLAND

One of six recorded examples of the 30c 1869 Pictorial Issue used to Switzerland
and the only one with an additional stamp



1134

1134

30c Ultramarine & Carmine (121). Rich color, used with **10c Brown (150)**, tied by segmented cork cancels, red "New York Paid All Br. Transit Jul. 13" (1870) circular datestamp on rebacked front only **to Zurich, Switzerland**, sender's directive "*Str Nevada, Swiss Closed Mail*" and carried on that Guion Line steamer, departing New York Jul. 13, 1870, arriving Queenstown Jul. 24, blue crayon "4" indicating quadruple rate, the front has been lined with linen and flaps added

VERY FINE. ONE OF SIX RECORDED USES OF THE 30-CENT 1869 PICTORIAL ISSUE TO SWITZERLAND, AND THE ONLY EXAMPLE USED WITH ANOTHER STAMP. A MARVELOUS MIXED-ISSUE FRANKING.

The franking pays four times the 10c rate via Closed Mail, which went into effect May 1, 1870. P.F. certificate 299477 no longer accompanies..... E. 10,000-15,000

ITALY—RATES TO ROME



1135

- 1135 ☒ **6c Ultramarine (115).** Straight edge at right, tied by cork cancel, black “New York Br. Transit Oct. 4” (1871) backstamp on cover **to Rome, Italy, and forwarded to Albano, Italy**, clear strike of “INSUFFICIENTLY PAID” straightline handstamp, with two **Italy, 1870, 50c Buff & Magenta, Postage Due (J10)**, one tied by “Albano 21 Oct. 71” double-circle datestamp, other with “Annulato” straightline and indistinct circular datestamp, range of backstamps including Rome, Florence and Albano, Very Fine and colorful use, the rate via Closed Mail was 10c, this was short paid so the first 50c Postage Due was affixed, it was then forwarded so the Postage Due was annulled and a second Postage Due stamp was affixed, with 1979 P.F. certificate..... E. 1,000-1,500



1136

- 1136 ☒ **12c Green (117).** Used with **2c Brown (113)**, tied by two strikes of circle of wedges cancel, 12c also tied by red “New York Paid All Direct Feb. 19” (1870) circular datestamp on cover **to Rome, Italy**, “PD” handstamp, well-struck “Bremen 10/3 70 Franco” framed datestamp, red crayon “4” credit crossed out and re-rated “Wfr 1 1/2”, receiving backstamp, slight edgewear, Very Fine, scarce use of 1869 stamps to pay 14c NGU Direct rate to Rome E. 400-500

ITALY



1137

- 1137 ☒ **10c Yellow (116).** Used with horizontal pair of **2c Red Brown (146)**, tied by **New York Foreign Mail Circle of Vs** cancel (Weiss TR-W4e), red "New York 4 Sep. 21" (1870) 4c credit datestamp on cover **to Rome, Italy, and forwarded to Albano, Italy**, red "Wfr. 1½" credit handstamp, "P.D." handstamp, Italian receiving backstamps (Oct. 9 and 10, 1870), Very Fine, a rare mixed-issue combination paying the 14c NGU Direct rate to Rome, ex Albert and "Andromeda", with 2006 P.F. certificate E. 1,000-1,500



1138

- 1138 ☒ **15c Brown & Blue, Ty. II (119).** Used with **1c Buff (112)** and **3c Ultramarine (114)**, tied by circle of wedges cancels, red "New York Paid All Br. Transit Jan. 8" (1870) backstamp on tissue-paper cover **to Rome, Italy**, red "4" credit handstamp, "PD" handstamp, blue crayon "f 1½" rate, receiving backstamp (Jan. 23), cover with small tears at left and bottom, still Fine, a colorful combination paying the 19c rate to Rome via North German Union Closed Mail, ex Knapp, with 2006 P.F. certificate..... E. 1,000-1,500

ITALIAN DESTINATIONS OTHER THAN ROME



1139

- 1139 ☒ **6c Ultramarine (115).** Used with **2c Brown (113)**, tied by segmented cork cancels, 2c also tied by "PAID ALL" handstamp on printed matter wrapper **to Palermo, Sicily**, transit and receiving backstamps, 2c small tear at lower left, still fresh and Very Fine use paying the 8c circular rate to Italy, with 1994 Holcombe certificate E. 500-750



1140

- 1140 ☒ **15c Brown & Blue, Ty. II (119).** Used with two **2c Brown (113)**, cancelled by quartered corks, one 2c tied by "New Orleans La. Jan. 6" (1870) circular datestamp on blue folded letter **to Turin, Italy**, sender's blue oval handstamp, red "New York Paid All Br. Transit Jan. 12" backstamp, carried on Cunarder *Java*, departing New York Jan. 12, 1870, arriving Queenstown Jan. 21, red "4" credit handstamp, red "Verviers Coeln Franco" datestamp, neat "PD" handstamp, blue crayon "Wf 1½" rate, transit and receiving backstamps, Very Fine, 19c Closed Mail rate via North German Union, with 1988 P.F. certificate E. 750-1,000



1141

- 1141 ☒ **10c Yellow (116).** Horizontal pair, straight edge at left, used with **3c Ultramarine (114)**, tied by open grid cancels, red “New York Registered Jul. 21” (1869) rimless datestamp on folded cover to **Naples, Italy**, red “New York Paid All Br. Transit Jul. 21” circular datestamp, manuscript registry numbers, transit and receiving (Aug. 5) backstamps, minor soiling around perfs, minor ink erosion in address

VERY FINE. A COLORFUL AND RARE 1869 PICTORIAL ISSUE REGISTERED COVER TO ITALY.

International registered covers during the 1869 Pictorial period are very rare. This cover was correctly prepaid for the 15c Italian Closed Mail rate and 8c registry fee. Illustrated in the Laurence book (p. 247), who notes this is the only recorded use of the 10c on a registered cover to Italy. E. 2,000-3,000



1142

- 1142 ☒ **15c Brown & Blue, Ty. II (119).** Two, tied by segmented cork cancels, red “New York Paid All Br. Transit Dec. 8” (1869) circular datestamp on blue folded cover to **Palermo, Italy**, carried on Cunarder *Scotia*, departing New York Dec. 8, 1869, arriving Queenstown Dec. 17, blue crayon “2” indicating double rate, Milan and Palermo (Dec. 24) backstamps, stamps with some slight toning at edges, Very Fine, double 15c Italian Closed Mail rate E. 1,000-1,500



- 1143 ☒ **10c Yellow (116)**. Tied by **Solid Star fancy cancel**, “New Brighton Pa. Sep. 15” (1873) circular datestamp on black-bordered **mourning cover to Florence, Italy**, red “New York Paid All Sep. 17” circular datestamp, transit and arrival backstamps, stamp with small corner creases, still Very Fine and attractive late use paying the 10c Closed Mail rate to Italy which came into effect March 1870, with 2013 P.F. certificate..... E. 400-500
- 1144 ☒ **10c Yellow (116)**. Two, tied by circle of wedges cancels, red “New York Paid All Br. Transit Oct. 29” (1870) circular datestamp on cover **to Naples, Italy**, sender’s directive “Via England”, receiving backstamp, some overall soiling, still Very Fine, double 10c rate via Closed Mail, perhaps three or four 10c 1869 covers are known with this double rate E. 500-750
- 1145 ☒ **12c Green (117)**. Used with **3c Ultramarine (114)**, tied by bold strikes of circle of Vs cancel, red “New York Paid All Br. Transit Dec. 1” (1869) circular datestamp on blue folded letter **to Genoa, Italy**, sender’s directive “Str. Germania by French Mail” but likely carried on Cunarder *Java*, departing New York Dec. 1, 1869, arriving Queenstown Dec. 11, Milano (Dec. 17) and Genoa (Dec. 18) backstamps, Very Fine E. 300-400

BELGIUM

BELGIUM



1146



1147



1148

- 1146 ☒ **2c Brown (113)**. Horizontal pair and two singles, used with block of three of **3c Ultramarine (114)**, on 3c Pink entire (U58) to **Louvain, Belgium**, stamps tied by quartered cork cancels, “Chicago Ill. Nov. 16” (1869) circular datestamp, red “New York Paid All Br. Transit Nov. 18” circular datestamp, receiving backstamp, reduced slightly into embossed stamp, otherwise Fine..... E. 400-500
- 1147 ☒ **3c Ultramarine (114)**. Horizontal strip of five, each with target cancel, “Cutler Me. Jun. 13” (1870) circular datestamp on yellow cover to **Antwerp, Belgium**, red “New York Paid All Br. Transit Jun. 18” circular datestamp, carried on NGL *Deutschland*, departing New York Jun. 18, 1870, arriving Southampton Jun. 29, receiving backstamp, right 3c barely affected from placement near edge of cover, Very Fine and unusual franking, ex Cutts E. 400-500
- 1148 ☒ **15c Brown & Blue, Ty. II (119)**. Tied by cork cancel and “New-York Mar. 19 1:30 PM” (1870) circular datestamp on buff cover to **Brussels, Belgium**, sender’s blue oval datestamp, red “New York Paid All Br. Transit” circular datestamp, transit and receiving backstamps, light cover creasing, small hole in New York transit marking and slightly reduced at top, still presentable and rare, this cover is not listed in the 1869 PRA Census—only one other 15c 1869 cover to Belgium is recorded (Type I stamp), ex Kuphal, with 2000 P.F. certificate..... E. 750-1,000

HOLLAND

HOLLAND



1149

- 1149 ☒ **2c Brown (113).** Used with **3c Ultramarine (114)** and **10c Green, F. Grill (96)**, tied by **red** quartered cork cancels, matching "Baltimore Md. Jun. 4" (1869) circular datestamp on blue folded cover **to Amsterdam, Holland**, red "New York Paid All Br. Transit Jun. 5" circular datestamp, receiving backstamp, "8" handstamp at lower left, expertly silked inside, otherwise Very Fine, colorful cancels and franking for 15c Closed Mail rate, ex Moody..... E. 500-750



1150

- 1150 ☒ **15c Brown & Blue, Ty. II (119).** Two, tied by **red** segmented cork cancels, matching "Baltimore Md. Dec. 27" (1869) circular datestamp on blue folded cover **to Amsterdam, Holland**, red "New York Paid All Br. Transit Dec. 28" circular datestamp also ties stamps, blue "2" crayon indicating double rate, carried on HAPAG *Westphalia*, departing New York Dec. 28, 1869, arriving Plymouth Jan. 7, 1870, receiving backstamp (Jan. 8), cover with few light age spots, Very Fine, scarce double-rate use via Closed Mail with Baltimore red foreign-mail cancels E. 1,000-1,500



1151

- 1151 ☒ **6c Ultramarine (115).** Bright color, tied by segmented cork cancel on blue folded printed matter cover **to Rotterdam, Holland**, sender's directive "*Per Str. Cambria*", neat strikes of "**SHORT PAID**" and "**INSUFFICIENTLY PAID**" handstamps, blue crayon "2" and manuscript Dutch due marking, receiving backstamp (Jun. 22, 1870), Very Fine, the correct payment for the double printed matter rate was 8c, this was charged postage due in Holland..... E. 750-1,000



1152

- 1152 ☒ **10c Yellow (116).** Tied by circle of wedges cancel and "Louisville Ky. Aug. 23" (1870) circular datestamp on bright buff cover **to Amsterdam, Holland**, red "New York Paid All Br. Transit Aug. 25" circular datestamp, receiving backstamp, stamp with light corner crease at top right not noted on certificate, Fine, an exceedingly rare use of the 10c on a cover to Holland paying the 10c Closed Mail rate effective Feb. 1870, according to the Laurence book (p. 251) only one other 10c cover to Holland is known (paying the 15c rate that ended Jan. 1870), Laurence also notes that a 10c franking to pay the reduced rate was not known to him, the cover offered here must have surfaced after publication of his book, with 2013 P.F. certificate..... E. 750-1,000

DENMARK

DENMARK

1153



- 1153 ☒ **3c Ultramarine (114).** Two horizontal strips of three, one with interpane margin and arrow, tied by blue target cancels and "Cincinnati O. Apr. 28" (1870) duplex datestamps on cover **to Copenhagen, Denmark**, sender's blue backstamp and directive "Closed Mail via England", red "New York Paid All Direct Apr. 30" backstamp, carried on Cunarder *Nemesis*, departing New York Apr. 30, 1870, arriving Queenstown May 9, red "4" credit overstruck by "2½" handstamp, red "Bremen Franco" framed datestamp and "Weiterfr. 1 Sgr" framed handstamp, transit and receiving backstamps, stamps slightly affected from placement near edge of cover, cover tear at right, still Very Fine and impressive franking for 18c rate via North German Union Closed Mail, ex Klein and Walske..... E. 500-750

1154



- 1154 ☒ **15c Brown & Blue, Ty. II (119).** Used with 3c Ultramarine (114), tied by circle of wedges cancels, red "New York Paid All Direct Nov. 27" (1869) backstamp on cover **to Copenhagen, Denmark**, red "2½" and "Wfco 1" credit handstamps, red "Verviers Coeln Franco" datestamp, transit and receiving backstamps, light vertical file fold affects 15c, cover with light waterstain at left

VERY FINE APPEARANCE. ONE OF ONLY TWO RECORDED EXAMPLES OF THE 15-CENT 1869 PICTORIAL ISSUE USED TO DENMARK.

The 15c Type I is not known used to Denmark. One other Type II is known, used with a 6c, paying the 13c rate plus 8c registry fee. The example offered here correctly pays the 18c rate via North German Union Direct Mail. With 2009 P.F. certificate. E. 3,000-4,000



1155

- 1155 ☒ **3c Ultramarine (114).** Used with **10c Green, F. Grill (96)**, tied by well-struck quartered cork cancels, "Milwaukee Wis. Jul. 22" (1869) circular datestamp on cover **to Randers, Denmark, Holland**, red Chicago "3" credit handstamp, red "Hamburg Franco" datestamp, receiving backstamp, 3c rounded corner at bottom left, still Very Fine, a rare mixed-issue franking properly paying the 13c Direct rate via North German Union Mail..... E. 1,500-2,000



1156

- 1156 ☒ **10c Yellow (116).** Vivid color, used with **3c Green (147)**, tied by segmented cork cancels, "Chicago Ill. Jul. 15" (1870-71) circular datestamp on buff cover **to Copenhagen, Denmark**, red Chicago "3" credit handstamp, red "Bremen Franco" framed datestamp and "Weiterfr. 1 Sgr" framed handstamp, receiving backstamp, backflap removed, stamps with few faults, Very Fine appearance, rare mixed-issue franking for 13c Direct rate via North German Union Mail (rate was reduced to 10c in October 1871), illustrated in Laurence 10c 1869 book (p. 216), signed Ashbrook, ex Mack, with 2004 P.F. certificate..... E. 1,000-1,500



1157

- 1157 ☒ **12c Green (117).** Two singles, used with **2c Brown (113)** and tied by Leaf cancels on cover to **Copenhagen, Denmark**, red “New York Paid All Direct Sep.?” (1869) circular datestamp, blue crayon “2” indicating double rate, red “5” in circle double credit handstamp, red “Hamburg Franco” framed datestamp, red crayon German credit marking, transit and receiving backstamps, light vertical file fold barely affects 2c, right 12c tiny corner crease and minor perf creases

VERY FINE APPEARANCE. THIS IS THE ONLY REPORTED USE OF THE 12-CENT 1869 PICTORIAL ISSUE ON COVER TO DENMARK. IT IS ALSO BELIEVED TO BE THE ONLY RECORDED 1869 FRANKING PAYING THE DOUBLE 13-CENT RATE TO DENMARK VIA NORTH GERMAN UNION DIRECT MAIL.

Between June 1868 and July 1870, the North German Union Direct rate to Denmark (via Bremen or Hamburg) was 13c (16c unpaid). During the same period, the NGU Closed Mail rate (via England, Belgium and Germany) was 18c (21c unpaid). Effective July 1, 1870, these rates were lowered to 10c and 13c, respectively (prepaid only). This cover was sent at double the earlier 13c NGU Direct rate. It is the only example of this franking/rate we have encountered.

Ex Eubanks and “Adriatic”. With 2019 P.F. certificate. E. 3,000-4,000



1158

- 1158 ☒ **3c Ultramarine (114).** Block of seven, cancelled by segmented cork, “**Chicago Ill. Registered Jan. 4**” (1870) circular datestamp on buff cover to **Odense, Denmark**, red “Recomandirt” framed handstamp and “Hamburg 22 1 70 Franco” framed datestamp, various registry and rate markings, one stamp wrapped around edge of cover, missing part of top flap, still Fine, a scarce franking paying the 13c Direct rate by North German Mail plus 8c registry fee, ex Krug..... E. 1,000-1,500

NORWAY

NORWAY

Cover to Norway with mixed-issue franking paying the short-lived 16-cent rate
by North German Union Mail



1159

- 1159 ☒ **3c Ultramarine (114).** Horizontal pair, centered to bottom, used with **10c Green, F. Grill (96)**, straight edge at left, tied by cork cancels with "Black Earth Wis. Jun. 29" (1869) circular datestamp on buff cover **to Bjørnerud, Norway**, red Chicago "6" credit handstamp, red "Hamburg Franco" framed datestamp and "2 Wf." credit handstamp, "Christiania 25 7 1869" (Oslo, Jul. 25) circular datestamp, Sandsund backstamp (Jul. 22), edge tears at top where opened and missing about half of backflap

FINE AND VERY RARE COVER TO NORWAY WITH THE SHORT-LIVED 16-CENT RATE BY NORTH GERMAN MAIL PAID BY A COMBINATION OF 1868 GRILLED AND 1869 PICTORIAL ISSUES.

The 16c North German Union Direct Mail rate was in effect briefly, from May 1, 1868, through July 31, 1869. There was little opportunity for use of this rate with the 1869 Pictorial Issue. With 2019 P.F. certificate..... E. 2,000-3,000



1160

- 1160 ☒ **10c Yellow (116).** Used with two **3c Ultramarine (114)**, tied by quartered cork cancels, "Madison Wis. Aug. 14" (1869) circular datestamp on cover with blind embossed initial "L" at left **to Jolsher, Norway**, red "Hamburg Franco" framed datestamp, red Chicago "5" credit handstamp, red "2wf." credit handstamp, "Christiania 3/9 1869" circular datestamp also ties one 3c, receiving backstamp, 10c small crease at top not noted on certificate, Very Fine, a beautiful 1869 Pictorial franking overpaying by 1c the 15c rate by North German Union Direct Mail, in effect from Aug. 1, 1869, to June 30, 1870 (the preceding rate was 16c), with 2008 P.F. certificate..... E. 1,500-2,000



1161

- 1161 ☒ **15c Brown & Blue, Ty. II (119).** Rich colors, cancelled by target, "Clermont Iowa Sep. 10" (1870) double-circle datestamp on buff cover **to Hamar Stift, Norway**, red "Chicago Ill. 5" 5c credit datestamp, red "Wfco 2" credit handstamp, various transit markings including "Christiania 3 11 1870" circular datestamp, receipt docketing, cover tear at left, stamp with few creases, still Very Fine, rare 15c 1869 cover to Norway, the 15c rate by North German Union Direct Mail was in effect from Aug. 1, 1869, to June 30, 1870 E. 500-750

NORWAY

The only recorded 30c 1869 Pictorial Issue cover to Norway



1162

- 1162 ☒ **30c Ultramarine & Carmine (121).** Tied by grid cancel, "Clermont Iowa Jan. 17" (1871) circular datestamp on buff cover **to Hamar Stift, Norway**, red "New York Paid All Jan. 21" circular datestamp, carried on *Inman City of Paris*, departing New York Jan. 21, 1871, arriving Queenstown Jan. 30, Christiania (Feb. 15) and Elverum (Feb. 18) circular datestamps, blue crayon "Wf4" double-rate credit, cover with some edge flaws and light staining removed

VERY FINE APPEARANCE. THIS IS THE ONLY RECORDED COVER TO NORWAY WITH THE 30-CENT 1869 PICTORIAL ISSUE. A WONDERFUL POSTAL HISTORY ARTIFACT.

The franking pays the double 15c North German Union Closed Mail rate via England. With 1999 P.F. certificate prior to expert cosmetic improvements. E. 10,000-15,000

SWEDEN

SWEDEN



1163

- 1163 ☒ **10c Yellow (116).** Used with horizontal pair and single of **3c Ultramarine (114)**, tied by rosette cancels, "Hartford Ct. May 27" (1870) circular datestamp on cover **to Gothenburg, Sweden**, sender's directive "Via N. German Union", red "New York Paid All Br. Transit May 28" backstamp, red "4" credit handstamp, red "Verviers Coeln Franco" datestamp, blue crayon "Wf 1½", receiving backstamp (Jun. 10), stamps affected from opening with tear in right 3c stamp and others with light creases

VERY FINE APPEARANCE. A RARE COVER TO SWEDEN WITH COLORFUL 1869 PICTORIAL FRANKING PAYING THE 19-CENT RATE VIA NORTH GERMAN UNION CLOSED MAIL.

Illustrated and described in the Laurence 10c 1869 book (p. 220). Laurence wrote it was carried on the *NGL Main*, departing New York May 28, 1870, arriving Southampton Jun. 7. Forster wrote it was carried on *Inman City of Paris*, departing New York May 28, 1870, arriving Queenstown Jun. 6. Either way, it is a rare 19c rate cover to Sweden with 1869 stamps.

Ex Klein E. 3,000-4,000



1164

- 1164 ☒ **12c Green (117).** Used with **2c Brown (113)**, tied by grid cancels, red "New York Paid All Direct Mar. 15" (1870) circular datestamp on folded cover **to Stockholm, Sweden**, sender's blue datestamp, red "4" credit handstamp, carried on *HAPAG Silesia*, departing New York Mar. 15, 1870, arriving Plymouth Mar. 25, red "Hamburg 27 3 70 Franco" datestamp, receiving backstamp, Very Fine, rare example of the short-lived 14c North German Union Direct rate to Sweden..... E. 750-1,000

GREECE

GREECE

The only recorded cover to Greece with the 10c 1869 Pictorial Issue



1165

- 1165 ☒ **10c Yellow (116).** Vertical pair, used with **3c Ultramarine (114)**, tied by grid cancels, "Evanston Ill. Nov. 11" (1869) circular datestamp on tissue-paper cover **to Athens, Greece**, red "New York Paid All Br. Transit Nov. 16" backstamp, carried on HAPAG *Westphalia*, departing New York Nov. 16, 1869, arriving Plymouth Nov. 26, red crayon "8" credit and blue crayon "f3" credit, large "P.D." handstamp also ties pair as does red "Verviers Coeln Franco" datestamp, cover expertly restored at right including adding a portion of the 3c stamp

FINE APPEARANCE. THE ONLY RECORDED USE OF THE 10-CENT 1869 PICTORIAL ISSUE TO GREECE. PERHAPS SIX TO EIGHT 1869 PICTORIAL ISSUE COVERS TO GREECE ARE RECORDED IN TOTAL.

Illustrated and described in the Laurence 10c 1869 book (p. 232). This cover correctly pays the 23c rate via North German Union Closed Mail. E. 2,000-3,000

One of two recorded covers to Greece with the 15c Type II 1869 Pictorial Issue



1166

- 1166 ☒ **15c Brown & Blue, Ty. II (119).** Rich colors, used with **3c Ultramarine (114)**, tied by dotted grid cancel, red "Providence R.I. Jan. 5" (1870) double-circle datestamp with matching "PAID" in circle handstamp on cover **to Athens, Greece**, sender's directive "*via North German Union Direct*", "New York Paid All Direct Jan. 8" backstamp, red crayon "8" credit, "P.D." (Paid to Destination) handstamp, red "Bremen Franco" framed datestamp, red "*Wf 3½*" credit, Athens receiving backstamp (Gregorian calendar), backflap removed, one-inch edge tear at right not affecting stamps or appearance

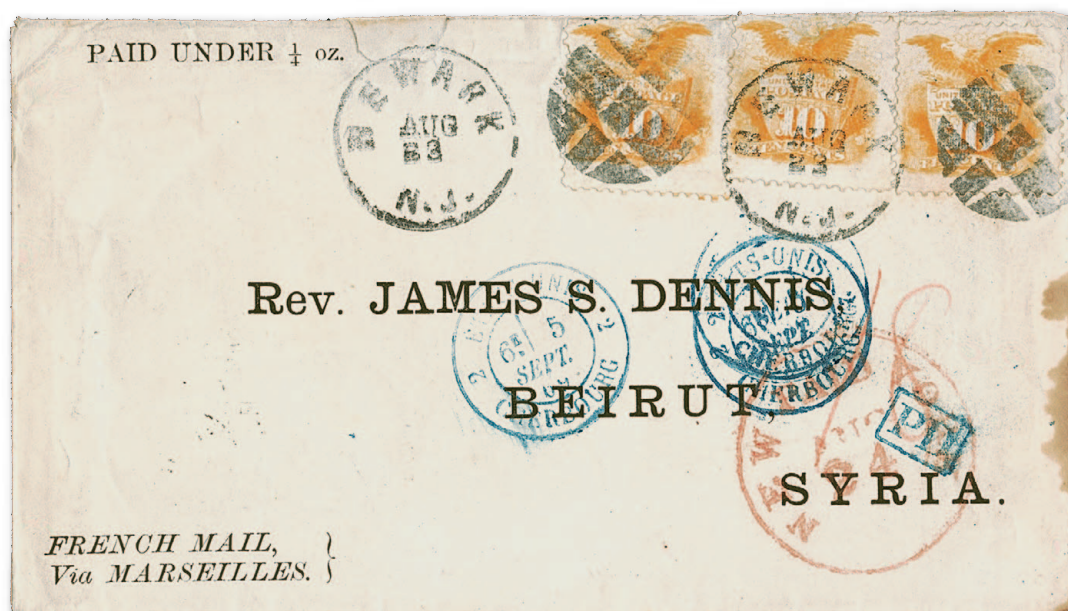
VERY FINE. ONE OF TWO RECORDED 1869 15-CENT TYPE II COVERS TO GREECE. A COLORFUL AND EXTRAORDINARY FOREIGN-MAIL COVER.

The 18c rate to Greece applied to North German Union Direct Mail (the NGU Closed Mail rate was 23c). In July 1870 the rate was reduced to 15c (with a corresponding reduction of the 23c NGU Closed Mail rate to 18c). The other recorded cover bears a 15c Type II with a 3c Bank Note stamp (Sale 1063, lot 1569).

Ex Coulter. With 2006 P.F. certificate. E. 10,000-15,000

SYRIA AND TURKEY

A colorful and rare French Mail rate cover to Turkey with the 10c 1869 Pictorial Issue



1167

- 1167 ☒ **10c Yellow (116).** Three, tied by segmented cork cancels, "Newark N.J. Aug. 23" (1869) circular datestamp on cover with printed address to "Rev. James S. Dennis, Beirut, Syria", with printed directive "French Mail via Marseilles" at bottom left, red "New York Paid Aug. 24" circular datestamp, red crayon "18" credit, blue Cherbourg arrival datestamps (Sep. 5) and matching "PD" framed handstamp, receiving backstamp (Sep. 20), stamps with few faults, slight toning at right edge of cover

FINE. ONE OF THREE RECORDED 10-CENT 1869 PICTORIAL COVERS TO SYRIA WITH PREPAYMENT FOR 30-CENT FRENCH MAIL RATE—TWO OF WHICH WERE ACTUALLY SENT BY THIS ROUTE.

The Laurence 10c 1869 book notes that the addressee was a Christian evangelist who for many years was part of the American Presbyterian Mission in Beirut, where the American University was founded. Dennis served as librarian for the mission and corresponded with other missionaries around the world.

The 30c French Mail rate to Syria was in effect until December 31, 1869. There are ten 10c 1869 covers to Syria (eight listed in the 1869 PRA Census), but only two were prepaid 30c for the French Mail rate while it was in effect. The third was prepaid 30c but sent via North German Union Mail.

Illustrated in Laurence 10c 1869 book (p. 182) E. 3,000-4,000



1168

- 1168 ☒ **10c Yellow (116).** Horizontal pair, cork cancels, tied by "Newark N.J. Mar. 1" (1870) circular datestamp on yellow cover with printed address to "**Rev. James S. Dennis, Beirut, Syria**", with printed directive "Via North German Union Closed Mail" at bottom left, red "5" in circle credit handstamp, blue crayon "f2" credit, minor cover wrinkles, part of backflap removed

FINE APPEARANCE. A COLORFUL AND RARE USE OF THE 10-CENT 1869 PICTORIAL ISSUE ON A NORTH GERMAN UNION MAIL COVER TO BEIRUT, SYRIA.

The Laurence 10c 1869 book notes that the addressee was a Christian evangelist who for many years was part of the American Presbyterian Mission in Beirut, where the American University was founded. Dennis served as librarian for the mission and corresponded with other missionaries around the world. There are ten recorded 10c 1869 covers to Syria, including eight sent via North German Union Mail. Five of the eight pay the 20c NGU rate.

Signed Ashbrook. With 2000 P.F. certificate. E. 2,000-3,000



1169

- 1169 ☒ **3c Ultramarine (114).** Horizontal pair and three singles, right stamp in pair straight edge at right, tied by **Negative Star** cancels, "Middleborough Mass. Mar. 30" (1870) circular datestamp on tissue-paper cover to **Constantinople, Turkey**, red "New York Paid All Direct Apr. 1" circular datestamp, red crayon "5" credit, red "Weiterfr. 2Sg" framed handstamp also ties pair, receiving backstamp (Apr. 21), cover with some flaws including repair at left, still Fine, very unusual franking to pay the 15c North German Union Mail Direct rate. E. 750-1,000

AFRICA

The only recorded 1869 Pictorial Issue cover to the Comoro Islands



1170

- 1170 ☒ **15c Brown & Blue, Ty. I (118).** Used with horizontal strip of three **3c Green, H. Grill (136)**, trace of grill on middle stamp at lower right, tied by target cancels, "West Falmouth Mass. Apr. 24" (1871) circular datestamp on cover to "*Sultan Abdalah, King of Johanah, Comoro Islands, Indian Ocean*", red New York circular datestamp and crayon "20" credit, carried on Cunarder *China*, departing New York May 6, 1871, arriving Queenstown May 5, red "London Paid 6 MY 71" circular datestamp and "1d" British Colonial credit handstamp, 3c stamps with few toned perfs, cover with small nick at bottom right and slightly reduced at left

VERY FINE. THIS IS THE ONLY RECORDED 1869 PICTORIAL ISSUE COVER TO THE COMORO ISLANDS, LOCATED OFF THE EAST COAST OF AFRICA BETWEEN MOZAMBIQUE AND MADAGASCAR.

According to Wikipedia, the Comoro Islands may have been settled as early as the 6th century, and the islands were settled by several different groups. Islam probably arrived in the 10th century. Settlers formed a prosperous trade region with Zanzibar and the coastal towns of Kenya and Tanzania, exporting goods to Africa, the Middle East and India. The island name on this cover, Johanna, was the English name for Anjouan.

Early postal history to or from the Comoro Islands is rare. We have never offered any covers to or from the Comoros. We were able to find a reference in the March 8, 1941, *Sloane's Column* (copy accompanies) where he noted he acquired an old whaling captain's correspondence from the late 1850s to about 1875, addressed to Mauritius, Seychelles and other destinations. He notes "Among the material was one amusing item I kept, a stampless cover addressed to 'Capt. D. E. Allen, Bark Merlin, Moosamdoo'. To the left of the cover is a blue circular datestamp 'Sultan Abdallah, King of Johanna, Comoro Islands, May 29, 1871'. And a most excellent, up to date model of hand-stamping apparatus, time-clock style, with movable dates. No doubt it had required much maneuvering on the part of the Sultan to have it made, probably in the United States, and delivered to his garden spot of the universe, and doubtless he was mighty proud when he used it."

Offered in a 2007 Bennett sale, where described as recently discovered in Europe. With 2007 P.F. certificate..... E. 15,000-20,000

The only recorded 1869 Pictorial Issue cover to St. Helena



1171

- 1171 ☒ **24c Green & Violet (120)**. Used with pair of **2c Red Brown (146)**, tied by circle of wedges cancels, "Edgartown Mass. Jan. 17, 1871" double-circle datestamp on cover to whaling captain **at St. Helena**, red "New York 24 Jan. 18" 24c credit datestamp—carried on the Guion Line *Nebraska*, departing New York Jan. 18, 1871, arriving Queenstown Jan. 30—red London Paid datestamp (Jan. 31) and "11d" British Colonial credit handstamp, carried on the Union Steamship Co. *Briton* from Southampton to the west coast of Africa and down to St. Helena, where a March 8 receiving backstamp was applied, slightly reduced at right

VERY FINE. A PHENOMENAL USE OF THE 24-CENT 1869 PICTORIAL ISSUE TO ST. HELENA. THIS IS THE ONLY RECORDED 1869 PICTORIAL ISSUE COVER TO ST. HELENA, AND THE PRESENCE OF THE 24-CENT DENOMINATION IS TRULY REMARKABLE.

St. Helena has a long and rich history. It served as the place of exile for Napoleon Bonaparte after his second abdication and was an important port of call for vessels rounding Africa, until the opening of the Suez Canal in November 1869. It also served as a port of call for whaling vessels in the 19th century. The U.S. rate to St. Helena after January 1, 1870, was reduced from 34c to 28c. The U.S. retained 4c (British Open Mail postage), and credited 24c to Great Britain.

Ex Krug. Illustrated and described in *Chronicle* 93 (p. 46) and 179 (pp. 200-203). Exhibited at Anphilex 1996. Signed Klemann and Ashbrook. With 1995 P.F. certificate..... E. 10,000-15,000

The only recorded 15c 1869 Pictorial Issue cover to South Africa



1172

- 1172 ☒ **15c Brown & Blue, Ty. II (119).** Wide margins, beautiful intense shades and impressions, used with **3c Green, H. Grill (136) and 10c Brown (150)**, 10c tiny perf tear, matching quartered cork cancels, "Buffalo N.Y. Aug. 1" (1870) circular datestamp on cover to J. F. Bingham aboard the U.S. Flagship *Delaware* at **Cape Town, South Africa**, red "New York Paid All Br. Transit Aug. 3" backstamp and matching "24" credit handstamp, 3c and 15c tied by red London Paid datestamp (Aug. 16), red crayon "I" British Colonial credit, Cape Town receiving datestamp (Sep. 26), neat receipt docketing

EXTREMELY FINE. A UNIQUE COMBINATION OF STAMPS FOR THE 28-CENT RATE TO CAPE TOWN, SOUTH AFRICA. THIS IS ALSO THE ONLY RECORDED EXAMPLE OF A 15-CENT 1869 PICTORIAL ISSUE OF EITHER TYPE TO SOUTH AFRICA.

1869 Pictorial Issue covers to South Africa should not be confused with the more readily available 1861-66 Issue covers, primarily from the Howland correspondence. 1869 Pictorial Issue covers to South Africa are truly rare, with only a handful in existence. The PRA Census book lists only three with the 10c (one also bears a 12c) and this 15c.

Illustrated in Rose book (p. 126). Ex Kuphal ("European's Large Gold Collection," Sale 819). With 2000 P.F. certificate E. 10,000-15,000

The only recorded 1869 Pictorial Issue cover to Natal



1173

- 1173 ☒ **2c Brown (113).** Vertical pair, used with **30c Orange, F. Grill (100)**, tied by small quartered cork cancels, "Lawrence Mass. Jun. 5" (1869) circular datestamp on cover **to Durban, Natal, South Africa**, red "New York Paid All Jun. 8" backstamp, red crayon "24" credit, red London Paid datestamp, red "2" British Colonial credit handstamp, bottom 2c rounded corner, barely reduced at right

VERY FINE. THIS IS THE ONLY RECORDED USE OF THE 1869 PICTORIAL ISSUE TO NATAL—ALSO A VERY RARE MIXED-ISSUE FRANKING WITH THE 30-CENT 1868 GRILLED ISSUE.

The franking pays the short-lived 34c rate by British Mail via Plymouth, which was in effect until January 1870..... E. 4,000-5,000

INDIA

INDIA

An attractive and rare 1869 Pictorial Issue cover to India from the Rev. Bissell correspondence



1174

- 1174 ☒ **12c Green (117).** Pre-printing paperfold at bottom left, used with **10c Yellow (116)**, tied by circle of wedges cancels, light strike of red "Boston Mass. Feb. 22" (1870) circular datestamp on cover with printed address to Rev. Bissell in **Ahmednuggur, India**, red crayon "18" credit, red London Paid datestamp, red "1d" British Colonial credit handstamp, "Sea Post Office 25-3 70" oval and red receiving backstamps

VERY FINE. A COLORFUL AND ATTRACTIVE 1869 PICTORIAL ISSUE FRANKING ON A COVER TO INDIA FROM THE BISSELL CORRESPONDENCE.

The 10c and 12c 1869 Pictorial Issue stamps pay the 22c British Mail rate via Southampton. Ex Gibson and Wunsch..... E. 2,000-3,000

**An extraordinary 1869 Pictorial Issue cover to Bombay and
forwarded to Calcutta with India stamps**



1175

- 1175 ☒ **10c Yellow (116).** Horizontal pair, used with **2c Red Brown, H. Grill (135)**, cancelled or tied by corks, "East Greenwich R.I. May 5" (1871) circular datestamp on tissue-paper cover **to Bombay, India, and forwarded to Calcutta**, various rate markings, some of which are covered by forwarding postage paid by pair of **India, 1865, ½a Blue (20)** tied by "Bombay 17 JU 71" and "1" in grid duplex datestamp, Sea Post and red Calcutta backstamps, also with "TOO LATE" backstamp, cover with some expert repairs

VERY FINE. A COLORFUL AND SCARCE 1869 PICTORIAL ISSUE COVER TO INDIA, WITH FORWARDING POSTAGE PAID BY INDIA STAMPS.

This is addressed to Mr. A. F. Carstein as 1st Officer on the American ship *Cromwell*. According to Michael Laurence (10c 1869 book, p. 115), "Asmus Ferdinand Carstein (1842-74) was a German-born seafarer who married a Rhode Island girl and died soon afterwards."

With 1987 P.F. certificate. E. 2,000-3,000

CEYLON

CEYLON

A rare 1869 Pictorial Issue cover to Ceylon with mixed-issue franking



1176

- 1176 ☒ **2c Brown (113).** Few creased perfs, used with pair of **10c Brown (150)**, cancelled by **Circle of Hearts fancy cancel**, "Milwaukee Wis. Sep. 27" (1870) circular datestamp on small cover **to Batticotta, Ceylon**, scarce red "**Chicago Paid 18**" undated credit handstamp, red London Paid datestamp and red crayon "1" British Colonial credit, transit and receiving backstamps, slightly reduced at right, 2c light horizontal crease from placement near edge of cover

VERY FINE. A CHOICE AND UNUSUAL 1869 PICTORIAL AND BANK NOTE MIXED-ISSUE FRANKING COVER TO CEYLON, BEARING A SCARCE CHICAGO EXCHANGE OFFICE CREDIT MARKING.

Less than a half dozen covers to Ceylon are known with the 1869 Pictorial Issue. Ex Stark and Mack. Signed Ashbrook. With 2004 P.F. certificate..... E. 2,000-3,000

AUSTRALASIA



1177

- 1177 ☒ **6c Ultramarine (115).** Used with **10c Green, F. Grill (96)**, tied by target cancels, light strike of “Bainbridge N.Y. Mar. 19” (1870) circular datestamp on buff cover **to Waterlow Post Office, New South Wales, Australia**, sender’s directive “Via South Hampton Eng.”, red “12” credit handstamp and faint red New York datestamp, red London Paid datestamp, red crayon “4”, New York, Sydney and receiving backstamps, stamps also tied by boxed “ADVERTISED/UNCLAIMED” framed handstamp applied in New South Wales, 6c some toning around perfs, Fine and scarce use paying the 16c rate to New South Wales via Southampton E. 1,500-2,000



1178

- 1178 ☒ **10c Yellow (116).** Tied by target cancel and “Sonoma Cal. Jul. 8” (1870) circular datestamp on cover **to Sydney, Australia**—carried from San Francisco to Honolulu on the NPT *Ajax*, departing Jul. 10, 1870, then by **Hall Line City of Melbourne**, departing Honolulu July 26, arriving Sydney Aug. 25—Sydney receiving backstamp (Aug. 25), receipt docketing at left, stamp with rounded top left corner, Fine, an extremely rare cover to Australia carried on the short-lived Hall Line, Laurence recorded six 1869 Hall Line covers (10c 1869 book, p. 316) and we have added this cover and a 24c 1869 cover to the record (*Chronicle* 278, May 2023) E. 1,000-1,500

Rare 1869 Pictorial and 1868 Grill mixed-issue cover to New Zealand



1179

- 1179 ☒ **6c Ultramarine (115).** Used with **10c Green, F. Grill (96)**, cancelled by identical quartered corks, "Edgartown Mass. Jan. 12, 1870" double-circle datestamp on cover to a whaling vessel **at Russell, Bay of Islands, New Zealand**, red "12" credit handstamp, red London Paid datestamp (Jan. 26), New York, Auckland and receiving backstamps, 6c trimmed perfs at top and left, some gum stains FINE. ONE OF TWELVE RECORDED 1869 PICTORIAL ISSUE COVERS TO NEW ZEALAND.

The 10c F Grill and 6c 1869 stamps pay the 16c rate to New Zealand by British Mail via Southampton, in effect from January 1, 1870.

With 1990 P.F. certificate..... E. 2,000-3,000

A colorful and rare 1869 Pictorial Issue cover to New Zealand

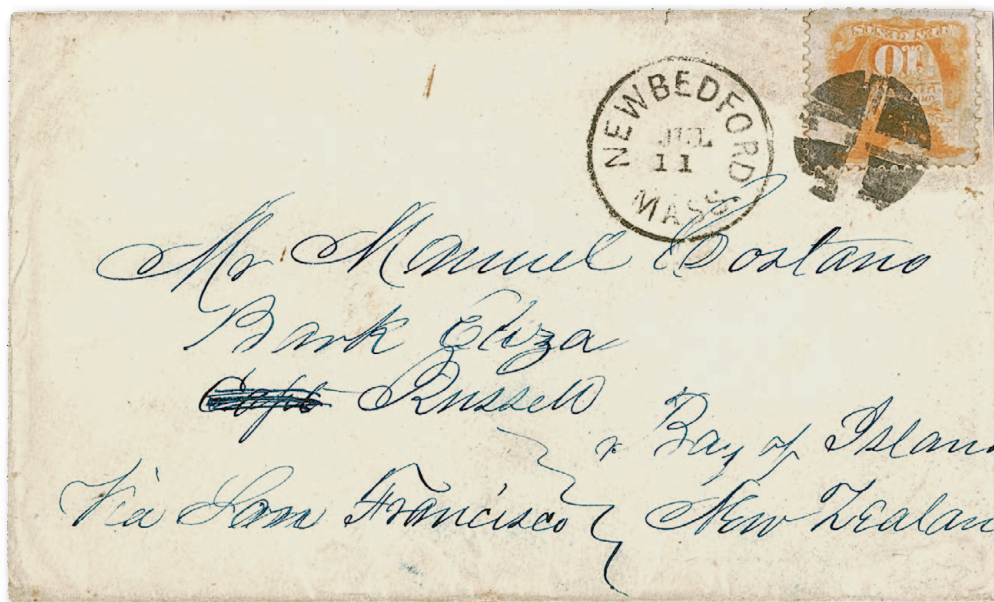


1180

- 1180 ☒ **12c Green (117).** Used with **10c Yellow (116)**, straight edge at left, tied by quartered cork cancels, "New Bedford Mass. Nov. 16" (1869) circular datestamp on cover to **Manganui, New Zealand**, addressed to Manuel Castane on the whaling bark *Eliza*, red Boston circular datestamp also ties stamps, red crayon "12" credit, red London Paid datestamp (Nov. 28), red manuscript "2d" due marking—according to Bob Watson, this is probably a fee for letters held at the local trading post in Manganui—Auckland, Russell and receiving backstamps, cover expertly repaired

VERY FINE APPEARANCE. ONE OF TWELVE RECORDED 1869 PICTORIAL ISSUE COVERS TO NEW ZEALAND.

The 10c and 12c 1869 Pictorial Issue stamps pay the 22c rate via Southampton in effect ten months from March 1869 to January 1870. E. 3,000-4,000



1181

- 1181 ☒ **10c Yellow (116).** Tied by well-struck quartered cork cancel, "New Bedford Mass. Jul. 11" (1870) circular datestamp on cover to Manuel Castane on the whaling bark *Eliza* at **Russell, Bay of Islands, New Zealand**, sender's directive "*Via San Francisco*", Auckland (Sep. 13) and Russell (Sep. 15) backstamps, slightly reduced at right, stamp slightly affected from placement near edge, still Very Fine, an extremely rare cover to New Zealand carried on the short-lived Hall Line via Honolulu, Laurence recorded six 1869 Hall Line covers (10c 1869 book, p. 316) and we have added the cover in lot 1178 and a 24c 1869 cover to the record (*Chronicle* 278, May 2023), Hall provided service between Honolulu, Auckland and Sydney, only six sailings took place at the 10c rate, ex Juhring, with 1978 P.F. certificate..... E. 750-1,000



1182

- 1182 ☒ **10c Yellow (116).** Tied by target cancel, "Monument Mass. Oct. 10" (1871) circular datestamp on cover to **Hobart Town, Van Diemen's Land (Tasmania), Australia**, red "Boston Paid Oct. 31" circular datestamp, "Hobarttown Tasmania H Dec. 22 71" rimless receiving backstamp, "*Bark Three Brothers*" at lower left is part of the address as this was sent to a whaling vessel, slightly reduced at right, Fine and rare, one of two recorded 10c 1869 Pictorial covers carried on the Webb Line (Laurence 10c 1869 book, p. 316) E. 750-1,000

An extraordinary 1869 Pictorial Issue cover to Melbourne, Australia, carried outside the mails from Boston to San Francisco, then by the Hall Line to Sydney via Honolulu



1183

- 1183 ☒ **10c Yellow (116).** Horizontal pair, deep shade, cancelled by segmented cork, "San Francisco Cal. Jun. 10" (1870) circular datestamp on cover **from Boston to Melbourne, Australia, via San Francisco and Honolulu**, stamps applied over **"Forwarded by Macondray & Co. San Francisco"** double-line blue oval handstamp, sender's oval backstamp confirms Boston origin, Melbourne receiving backstamp (Jul. 25), clear strike of **"1s More to Pay"** oval handstamp uprated to "2/", opening tear at right, stamps oxidized and toning around perfs from gum, left stamp with tear, cover with opening tears

FINE. THE USE OF MACONDRAY & CO. FOR FORWARDING AND THE TRANSPACIFIC SERVICE BY THE HALL LINE ARE RARE ELEMENTS OF THIS REMARKABLE 1869 PICTORIAL ISSUE COVER TO AUSTRALIA.

This cover was sent from Boston to San Francisco, probably inside a package of letters to Macondray & Company. The weight of this cover was determined to be over a half ounce, so the pair of 10c stamps was applied by Macondray to pay the double blanket steamship rate. It was carried from San Francisco to Honolulu on the North Pacific Transportation Co. steamer *Ajax*, departing June 10, 1870, and arriving June 20. This was the first westbound trip of the new Hall Line service officially announced by the U.S. Post Office Department, although two earlier Hall Line trips brought U.S. mail to Auckland. This cover was carried from Honolulu on the *Wonga Wonga*, departing June 24 and arriving in Auckland July 15 and Sydney July 20. The Melbourne backstamp is dated July 25. Two shillings internal postage was charged to the addressee.

Laurence recorded six 1869 Hall Line covers in his 10c 1869 book (p. 316), and we have added the cover in lot 1178 and a 24c 1869 cover to the record (*Chronicle* 278, May 2023).

Illustrated in Laurence 10c 1869 book (p. 318) and *Chronicle* 278. Ex Coulter. With 2016 P.F. certificate..... E. 2,000-3,000

One of two recorded 24c 1869 Pictorial Issue covers to Australia



1184

- 1184 ☒ **24c Green & Violet (120).** Tied by rosette cancel, light strike of red “Boston Mar. 5” (1870) circular datestamp on cover to “*John Flood, Political Prisoner, Fremantle Prison, Western Australia*”, red London Paid datestamp, red crayon “24” credit crossed out and correctly rated “20”, cover with some wear and faults including small hole at left, stamp with crease and soiling

FINE APPEARANCE. ONE OF ONLY TWO RECORDED 24-CENT 1869 PICTORIAL ISSUE COVERS TO AUSTRALIA—THE “POLITICAL PRISONER” ADDRESS ADDS TO ITS ALLURE.

The addressee, John Flood, abandoned a promising legal career to become part of the Fenian movement advocating for Irish equality. On May 21, 1867, he was sentenced to 15 years in penal servitude and was on the last vessel that brought prisoners to Australia. He served five years and was released under the proviso that he not leave Australia. He passed away in 1909, and a monument was erected in his honor in 1911.

There are two recorded 24c 1869 Pictorial Issue covers to Australia: the cover offered here to Western Australia, and a cover front (with one back panel) to Auckland, New Zealand (see *Chronicle* 278).

Ex Juhring. With 1948 P.F. certificate noting this paid the rate to England—to us it looks like this was prepaid for the 24c rate to Australia by British Mail via Marseilles. E. 10,000-15,000

PHILIPPINES

One of two recorded 36c rate 1869 Pictorial Issue covers to the Philippines



1185

- 1185 ☒ **6c Ultramarine (115)**. Perfs just in at left, used with **30c Orange (71)**, trivial corner crease at lower right, both stamps tied by lightly struck circle of wedges cancels, red "Boston Paid Apr. 9" (1870) circular datestamp on blue folded letter from Charles F. Wyman in Cambridge, Massachusetts, to George Peirce, Peele, Hubbell & Co. **Manila, Philippines**, Robt. B. Storer blue oval forwarder handstamp, sender's directive "Via Marseilles", red crayon "32" credit, red London Paid datestamp (Apr. 19) and "1d" British Colonial credit handstamp, Hong Kong backstamp (May 31), vertical file fold clear of stamps

VERY FINE. A COLORFUL AND TRULY OUTSTANDING 1869 PICTORIAL MIXED-ISSUE COVER TO THE PHILIPPINES. ONE OF TWO RECORDED 36-CENT RATE 1869 COVERS KNOWN TO THE PHILIPPINES. THIS IS THE ONLY INTACT COVER BEARING A 6-CENT 1869 USED TO THIS DESTINATION.

The Peirce correspondence to Manila reached the philatelic community in the early 1980s. Prior to the revelation of this correspondence, Philippines was unknown as a destination with the 1869 Issue. With the dispersal of the so-called "Manila Find" by H. R. Harmer in 1994, the full scope of the Peirce correspondence became known. Only five of the intact covers bear 1869 stamps, and this is one of two 36c rates in the group, which are the only 36c rate covers to the Philippines known to collectors. The other bears a 30c 1869.

Ex Kuphal ("European's Large Gold Collection," Sale 819)..... E. 10,000-15,000

A rare 1869 Pictorial and 1868 Grill mixed-issue franking to the Philippines



1186

- 1186 ☒ **12c Green (117).** Used with **30c Orange, F. Grill (100)**, tied by circle of wedges in circle cancels, red "Boston Paid Sep. 10" (1869) circular datestamp on blue folded letter from Charles F. Wyman in Cambridge, Massachusetts, to George Peirce, Peele, Hubbell & Co., **Manila, Philippines**, Robt. B. Storer blue oval forwarder handstamp, sender's directive "Steamer of Sept. 11th, Via Marseilles", red crayon "32" credit, red London Paid datestamp (Sep. 23) and "1d" British Colonial credit handstamp, "2" handstamped due marking applied at Manila, Hong Kong (Nov. 5) and Manila (Nov. 10?), backstamps, vertical file fold does not affect stamps

VERY FINE. A RARE COMBINATION OF THE 12-CENT 1869 PICTORIAL AND 30-CENT F GRILL ON A COVER TO THE PHILIPPINES.

The Peirce correspondence to Manila reached the philatelic community in the early 1980s. Prior to the revelation of this correspondence, Philippines was unknown as a destination with the 1869 Issue. With the dispersal of the so-called "Manila Find" by H. R. Harmer in 1994, the full scope of the Peirce correspondence became known. This cover from the Peirce correspondence is one of only three we are aware of paying the 42c rate with 1869 Pictorial stamps, which was in effect until January 1, 1870..... E. 10,000-15,000

SIAM

SIAM

The only recorded 1869 Pictorial Issue cover to Siam



1187

- 1187 ☒ **10c Yellow (116).** Rich color, small gum smear in margin, used with **24c Gray Lilac, F. Grill (99)**, tied by circle of wedges cancels, magenta “New Haven Ct. Dec. —” (1869) double-circle datestamp on cover **to Bangkok, Siam**, sender’s directive “*Via Southampton*”, red “24” credit handstamp and matching “New York Dec. 8” backstamp, red London Paid datestamp (Dec. 18) and red crayon “1” British Colonial credit, neatly docketed with Feb. 19 receipt date

VERY FINE. AN EXTREMELY RARE MIXED-ISSUE FRANKING FOR THE 34-CENT BRITISH MAIL RATE VIA SOUTHAMPTON AND THE ONLY RECORDED 1869 PICTORIAL ISSUE COVER TO BANGKOK WITH ANY DENOMINATION.

This combination of the 10c 1869 and 1868 24c F Grill is rare for any destination. The 1869 PRA Census does not list another cover to Siam for the 6c value and up.

Ex West, Juhring, Herzog and Coulter. With 1983 P.F. certificate..... E. 7,500-10,000

SINGAPORE



1188

- 1188 ☒ **12c Green (117).** Horizontal strip of three, tied by quartered cork cancels, "Philipsburgh N.J. Jun. 28" (1870) circular datestamp on cover to J. F. Bingham aboard the U.S. Flagship *Delaware* in care of American Consul at **Singapore**, red New York backstamp and "32" credit handstamp, red London Paid datestamp (Jul. 9) and "1d" British Colonial credit handstamp, left stamp tiny tear at top center, stamps lightly toned

VERY FINE. ONE OF TWO RECORDED COVERS TO SINGAPORE WITH A STRIP OF THREE OF THE 12-CENT 1869 PICTORIAL ISSUE.

The 36c rate to Singapore by British Mail via Marseilles was in effect only from January through November 1870. This cover and a similar cover from the Bingham correspondence (ex Kuphal and Gross) are the only examples we have encountered (neither listed in the 1869 PRA census).

Ex Eagle, Knapp and Ishikawa. With 2000 P.F. certificate. E. 3,000-4,000



1189

- 1189 ☒ **12c Green (117).** Used with **24c Lilac (78)** and **6c Ultramarine (115)**, latter two perfs trimmed on one side, 12c perfs trimmed on two sides, cancelled by quartered corks, "New Canaan Conn. May 6" (1870) circular datestamp on cover to J. F. Bingham aboard the U.S. Flagship *Delaware* in care of American Consul at **Singapore**, red "New York Paid All Br. Transit May 7" backstamp, red "32" credit handstamp, red crayon "1" British Colonial credit, receiving backstamps, 12c small tear

FINE APPEARANCE. A RARE AND COLORFUL MIXED-ISSUE FRANKING ON COVER TO SINGAPORE, PAYING THE 42-CENT RATE BY BRITISH MAIL VIA MARSEILLES.

With 1992 P.F. certificate. E. 2,000-3,000

CHINA

CHINA

**Rare 1869 Pictorial and 1868 Grill mixed-issue franking on cover to China
with Hong Kong Marine Sorter datestamp**

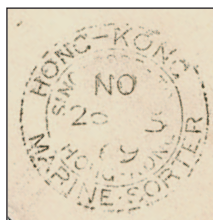


1190

- 1190 ☒ **12c Green (117)**. Rich color, used with **30c Orange, F. Grill (100)**, tied by circle of wedges cancels on cover addressed in violet to Dr. V. D. Collins, **Hong Kong, China**, sender's directive "*Via Marseilles*", red "New York Paid All Br. Transit Oct. 7" (1869) circular datestamp on back, red "32" credit handstamp—carried on the Cunarder *Malta*, departing New York Oct. 7, 1869, arriving Queenstown Oct. 19, then by P&O Route—red "London Paid 19 Oct 69" circular datestamp and "1d" British Colonial credit handstamp, "**Hong-Kong Marine-Sorter Singapore-to Hong-Kong, NO 2? 69**" backstamp (appears to be Webb Ty. B-2b), docketing with Dec. 4 receipt date, 30c barely affected from placement near edge of cover

VERY FINE. AN EXTREMELY RARE COMBINATION OF THE 12-CENT 1869 PICTORIAL ISSUE AND 30-CENT 1868 F GRILL TO PAY THE 42-CENT RATE TO HONG KONG BY BRITISH MAIL VIA MARSEILLES. ESPECIALLY DESIRABLE WITH THE HONG KONG MARINE SORTER BACKSTAMP.

According to the Webb book, the sorting of mail on board ship was first tried in 1857 and was found to speed the delivery of the mails on arrival in Hong Kong. The Governor of Hong Kong petitioned to make this a permanent position, but the scheme was not implemented. Seven years later, after the GPO decided that Hong Kong should assume greater responsibilities, the sorting plan was green-lighted. An official from the Hong Kong post office would meet the P&O steamer in Singapore and sort the mails during the trip to Hong Kong. The mails could then be delivered immediately on arrival or forwarded faster to their final destination outside of Hong Kong. The new service started with the arrival of mails at the end of July 1868. Mails were sorted between Singapore and Hong Kong, and another line was also established to sort mails between Hong Kong and Shanghai. There are five sub-types of Webb's Type B-2 Marine Sorter marking showing the date of trip. The example offered here is lightly struck, but appears to have the dot instead of a dash between the words "Marine" and "Sorter."..... E. 7,500-10,000

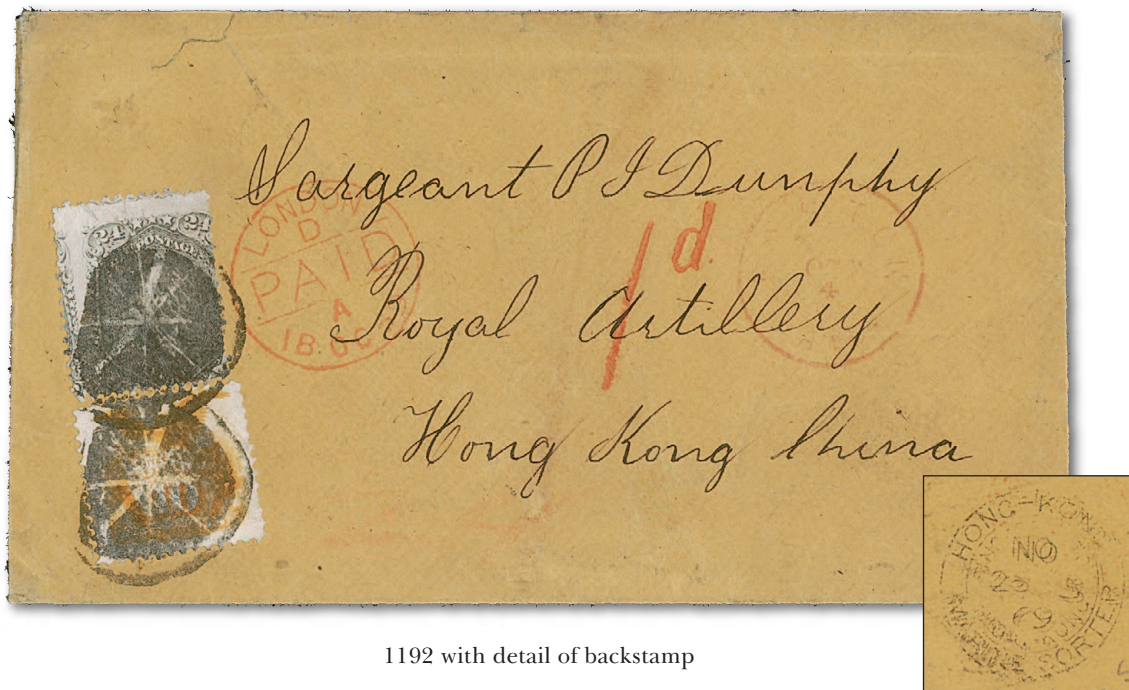


Detail of backstamp



1191

- 1191 ☒ **10c Yellow (116).** Vibrant color, tied by circle of wedges cancel, "Boston Mass. Sep. 24 2P.M." (1869) circular datestamp on cover **to Hong Kong, China**, addressed to Patrick Dunphy, a member of the Royal Artillery, red "San Francisco Paid All Oct. 4" circular datestamp, receiving backstamp, Very Fine..... E. 750-1,000



1192 with detail of backstamp

- 1192 ☒ **10c Yellow (116).** Used with **24c Gray Lilac, F. Grill, Split Grill (99)**, tied by circle of wedges in circle cancels, red "Boston Paid Oct. 4" (1869) circular datestamp on buff cover **to Hong Kong, China**, addressed to Sergeant Patrick Dunphy in the Royal Artillery, red London Paid datestamp (Oct. 18), red "1d" British Colonial credit handstamp, "**Hong-Kong Marine-Sorter Singapore-to Hong-Kong, JY 25/5 69**" backstamp, cover silked with some restoration, 24c tear at top, otherwise Very Fine, unusual combination for 34c rate via Southampton, especially rare with the Marine Sorter backstamp applied on board the ship prior to arrival in Hong Kong..... E. 1,000-1,500

Complementary 1869 Pictorial Issue covers—Mexico to China and China to Mexico



1193

- 1193 ☒ **10c Yellow (116).** Tied by quartered cork cancel on blue folded cover **from Manzanillo, Mexico, to Canton, China**, blue “Oetling & Bartling Manzanillo” oval handstamp, blue “Edward Vischer San Francisco Jun. 30, 1870” forwarder’s double-circle datestamp, red “San Francisco Paid All Jul. 1” circular datestamp, Hong Kong backstamp, vertical file fold affects stamp, still Very Fine and very unusual use from Mexico to China—a perfect mate to the cover in lot 1194 E. 1,000-1,500



1194

- 1194 ☒ **10c Yellow (116).** Tied by circle of wedges cancel, magenta “San Francisco Cal. Jan. 3 Paid” (1870) circular datestamp on blue folded cover with dateline of enclosure intact and reading “Canton 19 November 1869” **to Guadalajara, Mexico**, Canton sender’s oval handstamp, bold strike of “G. O’Hara Taafe * San Francisco” forwarder’s oval handstamp, Very Fine, a rare use from China to Mexico—a perfect mate to the cover in lot 1193—illustrated in the Laurence 10c 1869 book (p. 82) E. 1,000-1,500



1195

- 1195 ☒ **3c Ultramarine (114)**. Two, one affixed over edge of cover and used with vertical pair of **2c Black, F. Grill (93)**, tied by blue target cancels, matching "Bristol N.H. Jun. 19" (1869) circular datestamp on buff cover to **Swatow, China**, red "San Francisco Paid All Jul. 3" circular datestamp, Hong Kong and receiving backstamps, slightly reduced at right affecting stamps, Fine and attractive mixed-issue cover from the Wingate correspondence, ex Col. Allen E. 1,000-1,500



1196

- 1196 ☒ **2c Brown (113)**. Used with horizontal pair and single of **6c Carmine (148)**, tied by single purple penstroke, "East Whately Mass. Nov. 17" (1870) circular datestamp on cover to **Swatow, China**, red "San Francisco Paid All Dec. 1" circular datestamp, Hong Kong and receiving backstamps, right 6c small tears, 6c light gum soaks, still Very Fine, scarce double-rate mixed-issue cover from the Wingate correspondence, ex Rose, with 1996 P.F. certificate E. 750-1,000

U.S. POSTAL AGENCY IN SHANGHAI



1197

- 1197 ☒ **10c Yellow (116).** Tied by bold strike of quartered cork cancel, “U.S. Postal Ag’cy Shanghai Jun. 12” (1872) circular datestamp on cover to Mrs. Hannah James, Harrisburg N.Y., carried on the branch line PMSS steamer *Golden Age*, departing Shanghai Jun. 12, 1872, arriving Yokohama Jun. 20, then carried on the PMSS *America*, departing Yokohama Jun. 22, 1872, arriving San Francisco Jul. 13, neat strike of “San Francisco Steamship Jul. 14” circular datestamp, stamp with light corner crease at top right, cover with minor edgewear, Very Fine and attractive use from Shanghai, ex Schoendorf E. 750-1,000



1198

- 1198 ☒ **10c Yellow (116).** Vertical pair, tied by circle of wedges cancels, “P.O.D. U.S. Con. Genl. Shanghai Mar. 13” (1870) circular datestamp on cover to Rev. Geo. Lezburn, Appomattox C.H., Va., carried on the PMSS *New York*, departing Shanghai Mar. 13, 1870, arriving Yokohama Mar. 21, then on PMSS *America*, departing Yokohama Mar. 24, arriving San Francisco Apr. 13, “San Francisco Cal. Apr. 14” circular datestamp, some edgewear including tear at top, Very Fine and attractive double-rate cover from Shanghai to Virginia, ex Knapp E. 1,000-1,500

Extremely rare 6c rate cover from U.S. Postal Agency in Shanghai to Japan



1199

- 1199 ☒ **3c Ultramarine (114).** Horizontal pair, each cancelled by bold circle of wedges, equally clear strike of “P.O.D. U.S. Con. Genl. Shanghai Jun. 21” (1870) circular datestamp on blue folded letter to Pignatel & Co. in Nagasaki, Japan, sender’s directive “per Str New York”, light strikes of backstamp

EXTREMELY FINE. A RARE USE OF THE 3-CENT 1869 PICTORIAL ISSUE FOR THE 6-CENT INTERCONSULAR RATE BETWEEN CHINA AND JAPAN. ONLY FIVE 1869 PICTORIAL ISSUE COVERS ARE RECORDED FROM THE UNITED STATES POST OFFICE IN SHANGHAI TO JAPAN.

Letters between U.S. post offices in China and Japan were carried under the blanket 10c rate until the 6c interconsular rate was introduced. Based on archival correspondence, the rate is thought to have been implemented in mid-April 1870 (see Laurence 10c 1869 book, p. 281). This cover has the correct 6c interconsular rate. The recipient, Pignatel & Co., was one of the largest western trading firms.

There are five recorded interconsular covers from Shanghai to Japan with 1869 Pictorial stamps: one with a 10c (April 1, 1870, at 10c rate), one with a 6c (Sale 1248, lot 2061), one with a 3c pair (offered here), one with a 2c strip of three (Sale 1248, lot 2060) and the cover with a 12c to Yokohama (Sale 1261, lot 722). In addition, there are three 1869 interconsular covers from Japan to Shanghai, as well as 1869 covers between U.S. post offices in Japan.

Ex Knapp and Ishikawa. E. 7,500-10,000

JAPAN

JAPAN

One of two recorded 24c 1869 Pictorial Issue covers to Japan



1200

1200 ☒ **24c Green & Violet (120).** Used with **12c Dull Violet (151)**, tied by quartered cork cancels on folded letter datelined "New York 26 Augt. 1870" to **Yokohama, Japan**, from the Charles Thorel correspondence, no origination postmark, sender's directive "*per City of Washington via Marseilles*"—carried on that Inman Line steamer, departing New York Aug. 27, 1870, arriving Queenstown Sep. 7—red "32" credit handstamp, red "London Paid 8 SP 70" circular datestamp, red crayon "1" British Colonial credit, Hong Kong (Oct. 18) and blue Yokohama (Oct. 27) backstamps, minor soiling from gum around perfs

VERY FINE. AN EXTREMELY RARE 24-CENT 1869 PICTORIAL ISSUE COVER TO JAPAN FROM THE THOREL CORRESPONDENCE. ONE OF ONLY TWO EXAMPLES OF THE 24-CENT 1869 PICTORIAL ISSUE USED TO JAPAN AND ESPECIALLY DESIRABLE AS A MIXED-ISSUE FRANKING WITH THE BANK NOTE STAMP.

Charles (or Karl) Thorel was one of many western merchants doing business in Japan after the 1858 Harris Treaty formalized commercial relations between the United States and Japan. Thorel partnered with a Swiss-born merchant named Karl Ziegler in the silk-trading firm of Thorel, Ziegler & Company. The company was based in Yokohama and operated from 1865 to 1868, at which point the partnership dissolved. Thorel continued in business under the name Charles Thorel & Company. Were it not for the Thorel correspondence, collectors would have no 24c or 30c 1869 covers to Japan. In addition, there are quite a few Thorel covers with stamps of earlier issues or other 1869 values. This cover comes from the more recent discovery of Thorel letters, sold through Dr. Wilhelm Derichs auction house in Germany (August 29, 2014).

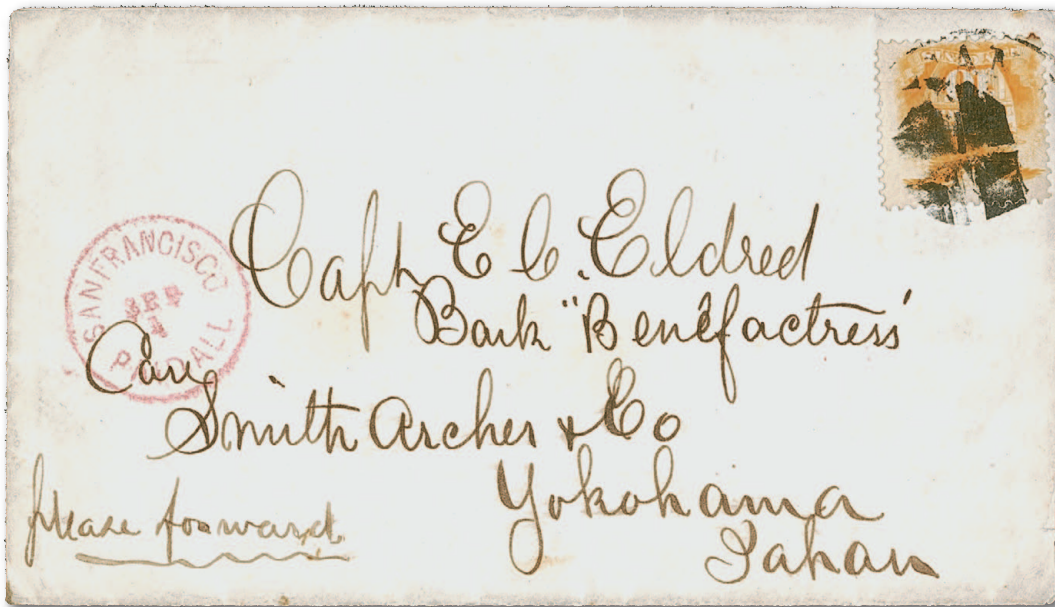
The 42c rate via Marseilles to Japan was reduced to 36c starting January 1, 1870. The 36c rate lasted only ten months, and the Marseilles route was disrupted by the Franco-Prussian War. We are aware of only one other 24c 1869 Pictorial cover to Japan, also from the Thorel correspondence. The other is dated January 1870 with a 12c 1869 Pictorial Issue (ex Hessel Part 2, lot 737, and Ishikawa).

Illustrated in *Chronicle* 246 (p. 163)..... E. 20,000-30,000

– 121 –



From the Thorel correspondence E. 7,500-10,000



1202

- 1202 ☒ **10c Yellow (116).** Bright color, tied by quartered cork and indistinct circular datestamp (San Francisco?) on cover **to Yokohama, Japan**, addressed to captain of Bark *Benefactress*, red "San Francisco Paid All Sep. 1" (1869) circular datestamp, likely carried on the PMSS *Japan*, departing San Francisco Sep. 4, 1869, single toned perf at top right, Very Fine, the *Benefactress* later brought news of the sinking of the U.S.S. *Oneida* in Japan E. 1,000-1,500



1203

- 1203 ☒ **10c Yellow (116).** Horizontal pair, faint toning and gum stains around stamps, right stamp two tiny tears at top, tied by segmented cork and duplex "New-York Jan. 20 1:30 PM" (1870) circular datestamp on cover to J. F. Bingham aboard the U.S. Flagship *Delaware* in care of American Consul at **Yokohama, Japan**, sender's directive "*Via Pacific R.R.*", Very Fine and extremely rare, of the twelve 10c 1869 covers to Japan listed in the 1869 PRA Census, only two are multiple rates (this double and a triple), ex Juhring and Coulter, with 1978 and 2022 P.F. certificates E. 1,000-1,500

U.S. POST OFFICES IN JAPAN

Early use of the 10c 1869 Pictorial Issue from Japan



1204

- 1204 ☒ **10c Yellow (116).** Radiant color, tied by quartered cork cancels applied at origin, magenta “**China and Japan Steam Service**” oval handstamp on blue cover to Mrs. J. F. Bingham, Ridgefield Conn., red “San Francisco Paid All Oct. 21” (1869) backstamp, carried on the PMSS *America*, departing Yokohama Sep. 29, 1869, arriving San Francisco Oct. 20, slightly reduced at left where small piece restored

VERY FINE. A RARE AND ATTRACTIVE EARLY USE OF THE 10-CENT 1869 PICTORIAL ISSUE FROM YOKOHAMA, JAPAN. FROM THE BINGHAM CORRESPONDENCE.

Perhaps nine or ten covers with the 10c 1869 Pictorial Issue are known used with the “China and Japan Steam Service” oval marking (including five listed in the PRA Census). This cover is illustrated in the Laurence 10c 1869 book (p. 288).

Ex Ishikawa..... E. 2,000-3,000

Double-rate 10c 1869 Pictorial Issue cover from Japan



1205

- 1205 ✉ **10c Yellow (116).** Horizontal pair, tied by bold strike of quartered cork cancel, "San Francisco Cal. Nov. 18" (1870) circular datestamp on cover from De Benneville Randolph Keim to his future wife Jennie A. Owen, Hartford Conn., with blurry strike of red "China and Japan Steam Service" oval handstamp, docketing on back "C. Written as sea. 3260 miles. Sept. 18, Rec'd Nov. 23 1870", additional docketing "two days after this he rec'd my 1st dispatch & wrote the finale. Did God guide that decision? I still trust Him."

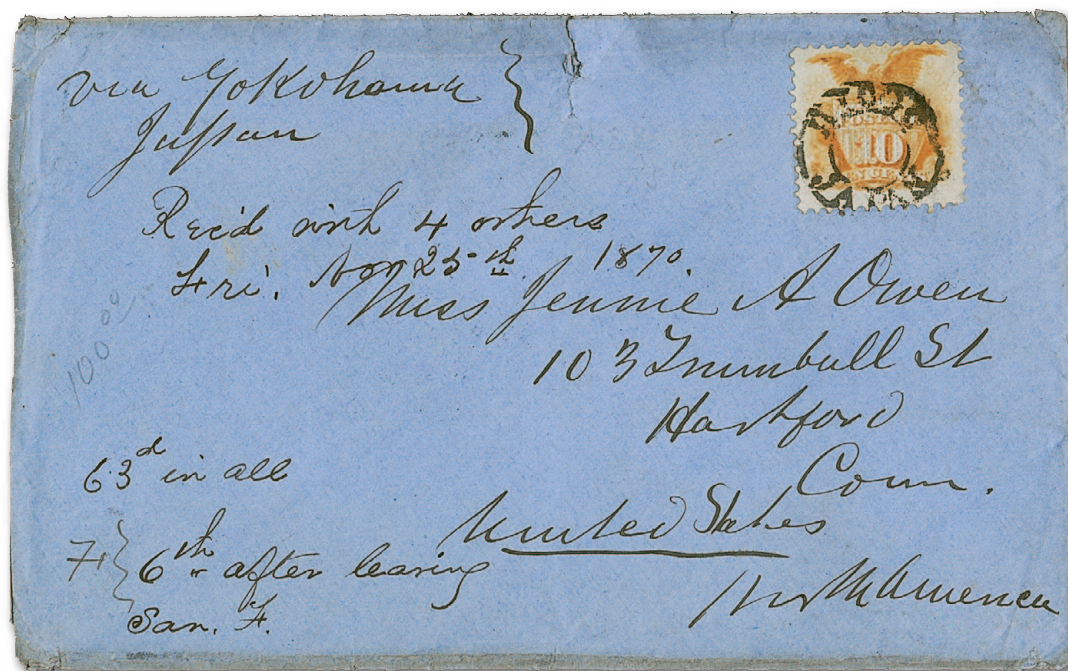
VERY FINE. A RARE DOUBLE-RATE COVER FROM JAPAN TO THE UNITED STATES, STRUCK WITH THE "CHINA AND JAPAN STEAM SERVICE" OVAL—FROM THE KEIM CORRESPONDENCE.

This correspondence was the subject of an article in *Chronicle* 233. He notes this cover does not have a Japanese postmark, but we can deduce its origin and route, based on the docketing and correspondence. The sender—De Benneville Randolph Keim—must have written this on the outbound voyage of the PMSS *China*. When Keim arrived in Yokohama around September 23, he just missed placing the letters he wrote at sea on board the PMSS *Great Republic*, which sailed earlier that day. So the letters were held for the return trip of the *China*, which left Yokohama on October 23 and arrived in San Francisco on November 17.

De Benneville Randolph Keim, a Pennsylvania native and prominent journalist, covered numerous engagements of the Civil War and Indian wars. In 1870 President Grant sent Keim to China as a special agent to investigate potential corruption in the U.S. consulates. He uncovered fraudulent activity by George F. Seward at the consulate in Singapore and nefarious dealings in the construction of the Woosung railroad. Keim also leaked the story of the Manchu rape of French nuns and massacre of Chinese citizens who converted to Catholicism.

Described and illustrated in "The Keim-Owen Correspondence: 1869 Covers from the Far East" (*Chronicle* 233). With 2011 P.F. certificate..... E. 3,000-4,000

Very rare 10c 1869 Pictorial Issue cover with the Hiogo double-circle handstamp



1206

- 1206 ☒ **10c Yellow (116).** Tied by “HIOGO/JAPAN” double-circle handstamp on blue cover to Miss Jennie A. Owen, Hartford Conn., from De Benneville Randolph Keim with directive “Via Yokohama Japan”, receipt docketing “Rec’d with 4 others Fri. Nov. 25th 1870” and also pencil “Hiogo-Oct. 11” on back, neat “San Francisco Cal. Nov. 18” (1870) double-circle backstamp, slightly reduced at left, small edge tear at top

VERY FINE. A RARE USE OF THE 10-CENT 1869 ON COVER FROM JAPAN WITH THE HIOGO DOUBLE-CIRCLE HANDSTAMP. ONLY NINE 1869 PICTORIAL ISSUE COVERS ARE RECORDED WITH THIS MARKING.

This cover was carried on the Pacific Mail Steamship Co.’s branch line steamer *Golden Age*, departing Shanghai on October 13, 1870, and arriving in Yokohama October 21, picking up mail at Hiogo along the way. It was then carried by the PMSS *China*, departing Yokohama October 23 and arriving in San Francisco November 17. It was delivered to the recipient, Jennie A. Owen, at the same time as four other pieces of mail from De Benneville Randolph Keim, her future husband.

The “Hiogo Japan” circular handstamp is frequently encountered off cover, but is very rare on cover. A census by Jeffrey M. Forster, published in *Chronicle* 251, lists nine 1869 Pictorial Issue covers with the “Hiogo/Japan” double-circle handstamp. See also “The Keim-Owen Correspondence: 1869 Covers from the Far East” (*Chronicle* 233)..... E. 5,000-7,500

JAPAN

A spectacularly colorful 1869 Pictorial and 1870 Bank Note mixed-issue cover
with the stamps paying the combined rates from Japan to England



1207

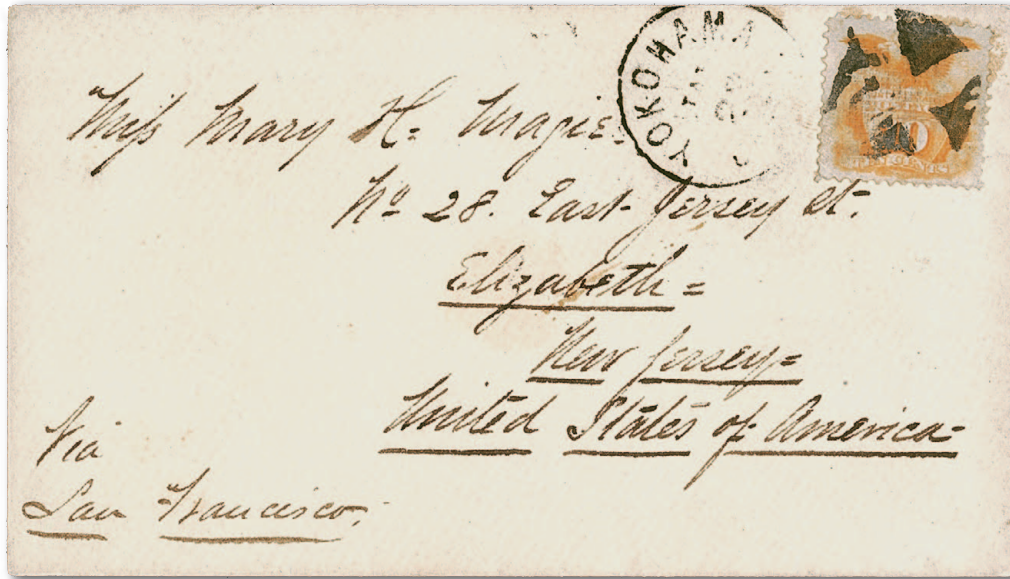
1207 ☒ **10c Yellow (116).** Bright color, used with **6c Carmine (148)**, both stamps cancelled by identical segmented cork on blue cover **from Hiogo, Japan to London, England**, Hiogo merchant's blue oval handstamp, both stamps tied by red New York circular datestamp (Jul. 1871), light vertical bend in cover away from stamps

VERY FINE. A COLORFUL AND RARE MIXED-ISSUE FRANKING WITH THE 10-CENT 1869 PICTORIAL AND 6-CENT 1870 NATIONAL BANK NOTE STAMPS PAYING THE COMBINED TREATY RATES FROM JAPAN TO ENGLAND VIA THE UNITED STATES.

The 10c 1869 Pictorial and 6c 1870 Bank Note Issue stamps pay the 10c Japan-U.S. and the 6c U.S.-Great Britain treaty rates.

With 2017 P.F. certificate..... E. 5,000-7,500

10c 1869 Pictorial Issue on cover from Hiogo, Japan, with Yokohama datestamp



1208

- 1208 ☒ **10c Yellow (116).** Cancelled by quartered cork, "Yokohama Jan. 23" (1871) circular datestamp on cover **originating in Hiogo, Japan**, which is where stamp was cancelled (HIO-Can2 cancel attributed to Hiogo in Frajola-Perlman-Scamp book), neatly addressed to Elizabeth N.J., carried from Hiogo to Yokohama on the PMSS branch line steamer *Golden Age*, arriving Yokohama Jan. 21, 1871, then on the PMSS *Great Republic*, departing Yokohama Jan. 23 and arriving San Francisco Feb. 16, stamp with light creases and minor toning from gum

VERY FINE. A RARE 1869 PICTORIAL ISSUE COVER FROM HIOGO, JAPAN, TO NEW JERSEY VIA THE U.S. POST OFFICE IN YOKOHAMA.

This cover is described and illustrated in the Frajola-Perlman-Scamp book (pp. 150-151). Ex Ishikawa. With 1978 P.F. certificate..... E. 2,000-3,000

10c 1869 Pictorial Issue on cover from Yokohama, Japan, to Paris, France



1209

- 1209 ☒ **10c Yellow (116).** Vertical pair, tied by segmented cork cancel, “Yokohama, Japan Mar. 24” (1871) circular datestamp on cover **to the Ambassador of the Ottoman Empire in Paris, France**, carried on the PMSS *America*, departing Yokohama Mar. 24, 1871, arriving San Francisco Apr. 15, then carried overland, red “New York Paid 6 Apr. 25” 6c credit datestamp struck tying stamp, carried on Cunarder *China*, departing New York Apr. 26, 1871, arriving Queenstown May 5, red “London Paid 6 MY 71” circular datestamp and red “PD” in oval handstamp, Calais arrival datestamp, Paris receiving backstamp, slightly reduced at top and missing part of top flap, expertly restored along edges, minor soiling removed from stamp edges

VERY FINE. A RARE AND DESIRABLE COVER FROM YOKOHAMA, JAPAN, TO THE AMBASSADOR OF THE OTTOMAN EMPIRE IN PARIS, FRANCE, WITH 10-CENT 1869 PICTORIAL ISSUE STAMPS PAYING THE COMBINED JAPAN-U.S. AND U.S.-FRANCE RATES.

The 20c postage paid the 10c rate from Japan to the U.S. and the 10c rate from the U.S. to France. This is the only cover with this franking we have offered since keeping computerized records.

With 1992 Holcombe certificate. E. 4,000-5,000

END OF SALE — THANK YOU