



THE WORLD TRAVELER *Collection*

United States Stamps

Sale 1285

Thursday, May 4, 2023



Robert A. Siegel
AUCTION GALLERIES, INC.

THE WORLD TRAVELER *Collection*

United States Stamps



SALE 1285

Offered at unreserved public auction

THURSDAY, MAY 4, 2023

AT 10:30 A.M. (LOTS 2001-2146) AND 1:30 P.M. (LOTS 2147-2410)

All lots sold subject to **18% buyer's premium** and applicable sales tax or customs duty

Please carefully read the **Conditions of Sale** before bidding

Presale viewing by appointment only

Robert A. Siegel
AUCTION GALLERIES, INC.

21 WEST 38TH STREET, 7TH FLOOR, NEW YORK, N.Y. 10018

Phone (212) 753-6421 • Email: stamps@siegelauctions.com

Catalogues, internet bidding, resources, archives and the Siegel Encyclopedia at
siegelauctions.com



Robert A. Siegel

AUCTION GALLERIES, INC.

21 WEST 38TH STREET, 7TH FLOOR, NEW YORK, N.Y. 10018

Phone (212) 753-6421 • Email: stamps@siegelauctions.com

siegelauctions.com



Scott R. Trepel
President
strepel@siegelauctions.com



John P. Zuckerman
Senior Vice President
jzuckerman@siegelauctions.com



Corey Long
Senior Vice President
clong@siegelauctions.com

Siegel International
Dallas (214) 754-5991



Charles F. Shreve
Director, Siegel International
charles@siegelauctions.com



Samantha Aragon
VP, Financial
samantha@siegelauctions.com



Emily Singleton
VP, Operations
esingleton@siegelauctions.com



Andrea Moreno
Operations
andrea@siegelauctions.com



Alice Nemoto
Operations Assistant
anemoto@siegelauctions.com



Andrew Titley
VP, Siegel International
andrew@siegelauctions.com



Chris Anderson
International Specialist
chris@siegelauctions.com

Information for Bidders

Bidding

The following means are available for placing bids:

- 1) **Public Attendance:** Attendance is now permitted for fully vaccinated individuals and for unvaccinated individuals who follow all guidelines to prevent the spread of COVID-19. Live bidding will also be facilitated by mail, email, phone or internet.
- 2) **Live Internet Bidding:** Instructions for participating as a Live Internet Bidder are provided on the page opposite.
- 3) **Phone Bidding:** Bidders can be connected to the sale by phone and bid through a member of staff. Requests for phone bidding are subject to approval (please contact our office at least 24 hours before the sale). A signed Bid Form is required.
- 4) **Absentee Bids:** All bids received in advance of the sale, either by mail, fax, phone, email or internet, are Absentee Bids, which instruct the auctioneer to bid up to a specific amount on one or more lots in the sale. Absentee Bids sent by phone, fax or email should arrive at least one hour prior to the start of the sale session. Bids entered through Live Internet Bidding will be visible to the auctioneer during the sale. Written bids should be entered legibly on the Bid Form in the sale catalogue. Email and internet bids should be carefully typed and double-checked. All new bidders must provide references.

Presale Viewing by Appointment Only

To prevent the spread of COVID-19, presale viewing will be permitted for fully vaccinated individuals or for unvaccinated individuals who agree to follow all protective measures. To make an appointment and receive instructions, please contact us at (212) 753-6421 or by email. We reserve the right to refuse, cancel or postpone a request or appointment.

Expert Certification

Individual items offered without a PF or PSE certificate dated within the past 5 years may be purchased subject to certification of genuineness and our description. **Please refer to the Conditions of Sale and Grading Terms for policies governing certification.**

Shipping and Delivery

Procedures and charges for shipping lots are printed on the back of the Bid Form. **Bidders are responsible for all prescribed shipping charges and any applicable sales tax or customs duties.**

Price Realized

Prices realized are sent with each invoice. Bidders with email will receive a Bid Results report after the sale. Session results are posted immediately to siegelauctions.com

Live and Absentee Internet Bidding at Siegel

ALL INTERNET BIDDING IS NOW HANDLED DIRECTLY FROM THE SIEGEL WEBSITE

**REGISTERED BIDDERS MAY LEAVE BIDS IN ADVANCE OF THE SALE
AND BID LIVE DURING THE AUCTION**

DOWNLOAD THE SIEGEL APP FROM THE APPLE OR GOOGLE PLAY STORES

This step-by-step guide will instruct you how to register and use the bidding interface.

Start by following the simple steps to become a registered internet bidder.

Once you have been approved for bidding, you can leave bids in advance of the sale, listen to the auction and place bids live with the click of a mouse.

Registering with Siegel Auction Galleries

To bid, you must be registered and approved by Siegel.

To decide what you need to do, choose the description below that best fits you.



**I've already registered with Siegel and
have been approved by Siegel for internet bidding**

Internet bidding works by allowing registered bidders to observe and place bids, either before the sale or in real-time during the auction.

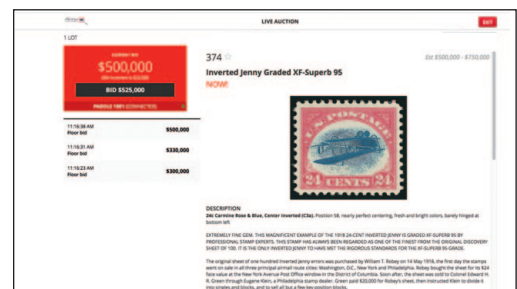
Live Internet Bidding will work with any browser on both PC and Mac operating systems, or with our app..

Before bidding by internet for the first time, we recommend observing an auction in progress. This will help you develop a feel for the sale tempo and bidding interface.

Log in and participate in the auction at bid.siegelauctions.com

When you're logged on as an internet bidder, the bidding interface shows a photo and description of the lot, the current bid (and your bidding status), options for placing competitive bids and buttons with bid increments.

- After you click on a bid amount, the auctioneer is immediately notified of your bid.
- Retracting a bid is not acceptable, so please bid carefully.
- You can track prior realizations from the bidding screen.



I'm a Siegel client, but I'm not registered to bid live

Go to bid.siegelauctions.com and click on **Login** at the top. Then click on the link for **Sign Up Now**. We will match your new signup to your existing account.

I want to become a Siegel client and bid in auctions

Go to bid.siegelauctions.com and click on **Login** at the top. Then click on the link for **Sign Up Now**. You will need to register and provide trade and banking references.

"System Down" or "Lost Connection" events do occasionally happen.

If you have any problems with Live Internet Bidding please call 212-753-6421 for immediate assistance.

Conditions of Sale (please read carefully before bidding)

THE PROPERTY IN THIS CATALOGUE WILL BE OFFERED AT PUBLIC AUCTION BY ROBERT A. SIEGEL AUCTION GALLERIES, INC. ("GALLERIES") ON BEHALF OF VARIOUS CONSIGNORS AND ITSELF OR AFFILIATED COMPANIES. BY BIDDING ON ANY LOT, WHETHER DIRECTLY OR THROUGH A THIRD PARTY, IN PERSON, BY TELEPHONE, FACSIMILE, INTERNET OR BY ANY OTHER MEANS, THE BIDDER ACKNOWLEDGES AND AGREES TO ALL OF THE FOLLOWING CONDITIONS OF SALE.

1. The highest bidder acknowledged by the auctioneer shall be the buyer. The term "final bid" means the last bid acknowledged by the auctioneer, which is normally the highest bid offered. **The purchase price payable by the buyer will be the sum of the final bid and a commission of 18% of the final bid ("buyer's premium"), together with any sales tax, use tax or customs duties due on the sale.**

2. The auctioneer has the right to reject any bid, to advance the bidding at his discretion and, in the event of a dispute, to determine the successful bidder, to continue the bidding or to reoffer and resell the lot in dispute. The Galleries' record of the final sale shall be conclusive.

3. All bids are per numbered lot in the catalogue unless otherwise announced by the auctioneer at the time of sale. The right is reserved to group two or more lots, to withdraw any lot or lots from the sale, or to act on behalf of the seller. The Galleries will execute bidding instructions on behalf of clients, but will not be responsible for the failure to execute such bids or for any errors in the execution of such bids.

4. **Lots with numbers followed by the symbol ° are offered subject to a confidential minimum bid ("reserve"), below which the lot will not be sold. The absence of the symbol ° means that the lot is offered without a reserve. If there is no reserve, the auctioneer has sole discretion to establish a minimum opening bid and may refuse an offer of less than half of the published estimate. Any lot that does not reach its reserve or opening bid requested by the auctioneer will be announced as "passed" and excluded from the prices realized lists after the sale. The Galleries may have a direct or indirect ownership interest in any or all lots in the sale resulting from an advance of monies or goods-in-trade or a guarantee of minimum net proceeds made by the Galleries to the seller.**

5. Subject to the exclusions listed in 5(A), the Galleries will accept the return of lots which, subject to the Galleries' sole judgment, have been misidentified or which have obvious faults that were present when the lot was in the Galleries' custody, but not so noted in the lot description. **All disputed lots must be received by the Galleries intact with the original packing material within 5 days of delivery to the buyer but no later than 30 days from the sale date. (5A) EXCLUSIONS:** The following lots may not be returned for any reason, or may not be returned for the reasons stated: (i) lots containing 5 or more items; (ii) lots from buyers who registered for the pre-sale exhibition or received lots by postal viewing, thereby having had the opportunity to inspect them before the sale; (iii) any lot described with "faults," "defects" or a specific fault may not be returned because of any secondary fault; (iv) photographed lots may not be returned because of centering, margins, short/nibbed perforations or other factors shown in the photos; (v) the color of the item does not match the color photo in the sale catalogue or website listing; (vi) the description contains inaccurate information about the quantity known or reported; or (vii) a certification service grades a stamp lower than the grade stated in the description or on an accompanying certificate.

6. Successful bidders, unless they have established credit with the Galleries prior to the sale, must make full payment in cleared funds before the lots will be delivered. Buyers not known to the Galleries must make payment in full within 3 days from the date of sale. **The Galleries retains the right to demand a cash deposit from anyone prior to bidder registration and/or to demand payment at the time the lot is knocked down, for any reason whatsoever.** In the event that any buyer refuses or fails to make payment in cash for any lot at the time it is knocked down to him, the auctioneer reserves the right to reoffer the lot immediately for sale to the highest bidder. **Credit cards (Visa, Mastercard and Discover only) can be accepted as payment, but will be subject to a 3% non-refundable Convenience Fee, which will be added to the total of the entire invoice (including hammer price, buyer's premium, shipping and transit insurance charges and any applicable taxes). The buyer waives the right to dispute all credit card charges.**

7. If the purchase price has not been paid within the time limit specified above, nor lots taken up within 7 days from the date of sale, the lots may be resold by whatever means deemed appropriate by the Galleries, and any loss incurred from resale will be charged to the defaulting buyer, and/or the Galleries may seek any other remedy prescribed by law to enforce payment. **Any account more than 30 days in arrears will be subject to a late payment charge of 1½% per month as long as the account remains in arrears. Any expenses incurred in securing payment from delinquent accounts will be charged to the defaulter.** A fee of \$250.00 will be charged for a check returned for insufficient funds.

8. All lots are sold as genuine. **Any lot accompanied by a certificate issued by The Philatelic Foundation or by Professional Stamp Experts within 5 years of the sale date is sold "as is" and in accordance with the description on the certificate. Such lots may not be returned for any reason, including but not limited to a contrary certificate of opinion or change in grade.** Buyers may request a certificate for a lot containing not more than one item, which does not have a P.F. or P.S.E. certificate (dated as above), provided that the following conditions are met: (i) the purchase price must be paid in full, (ii) if submitted by the buyer, the lot must be submitted to an acceptable expertizing service with a properly executed application form within 21 days of the sale, (iii) a copy of the application form must be given to the Galleries, (iv) the Galleries retains the right to resubmit the item for reconsideration, without time limit or other restrictions, for the purpose of obtaining a satisfactory opinion, (v) lots submitted for certification will be considered cleared 90 days from the date of sale, whether or not a certificate has been issued, unless the Galleries issues written approval of a further extension of return privileges, and (vi) in the event the lot is determined to be misidentified or misdescribed, pursuant to 5 and 5(A) of these Conditions, the Galleries will issue a refund to the buyer for the full purchase price and actual certification fees, but the reimbursement for certificate fees (and related costs) shall not exceed 10% of the hammer price of the lot. **Changes to a grade by the same certification service or a different grade from another certification service are not grounds for returning a lot.**

9. Until paid for in full, all lots remain the property of the Galleries on behalf of the seller.

10. Agents executing bids on behalf of clients may also be held responsible for all purchases made on behalf of clients, unless otherwise arranged prior to the sale.

11. **The buyer assumes all risk for delivery of purchased lots and agrees to pay for prescribed shipping costs. Buyers who receive lots in the U.S. are obligated to pay whatever sales tax or compensating use tax might be due, at any time, and buyers outside the U.S. are responsible for all customs duties.**

12. **The bidder consents that any action or proceeding against it may be commenced and maintained in any court within the State of New York or in the United States District Court for the Southern District of New York, that the courts of the State of New York and United States District Court for the Southern District of New York shall have jurisdiction with respect to the subject matter hereof and the person of the bidder. The bidder agrees not to assert any defense to any action or proceeding initiated by Galleries based upon improper venue or inconvenient forum. The bidder agrees that any action brought by the bidder shall be commenced and maintained only in a Federal Court in the United States District Court for the Southern District of New York or the State Court in the county in which Galleries has its principal place of business in New York. The bidder agrees not to use a public conflict resolution service and not to use any form of social media to publish comments or information about the Galleries and its employees which might harm the Galleries' reputation or business. These Conditions of Sale shall be governed by and construed in accordance with the substantive laws of the State of New York, and shall constitute an agreement that shall be binding on the parties, and their respective heirs, administrators, distributees, successors and assignees.**

Revised 6/2022

Grades, Abbreviations and Values Used in Descriptions

Grades and Centering

Our descriptions contain detailed information and observations about each item's condition. We have also assigned grades to stamps and covers, which reflect our subjective assessment. For stamps, the margin width, centering and gum are described and graded according to generally accepted standards (an approximate correlation to numeric grades is provided at right). Although we believe our grades are accurate, they are not always exactly aligned with third-party grading terms or standards for all issues. **A lot may not be returned because a certification service grades a stamp lower than the grade stated in the description. Information from the P.S.E. Stamp Market Quarterly and P.S.E. Population ReportSM is the most current available, but lots may not be returned due to errors or changes in statistics or data.**

Extremely Fine Gem (90-100): The term "Gem" describes condition that is the finest possible for the issue. This term is equivalent to "Superb" used by grading services.







Extremely Fine (80-90): Exceptionally large/wide margins or near perfect centering.

Very Fine (70-85): Normal-size margins for the issue and well-centered with the design a bit closer to one side. "Very Fine and choice" applies to stamps that have desirable traits such as rich color, sharp impression, freshness or clarity of cancel.

Fine (60-70): Smaller than usual margins or noticeably off center. Pre-1890 issues may have the design touched in places.

Very Good (below 60): Attractive appearance, but margins or perforations cut into the design.

Guide to Gum Condition

Gum Categories:	MINT N.H.	ORIGINAL GUM (O.G.)				NO GUM
	 Mint Never Hinged <i>Free from any disturbance</i>	 Lightly Hinged <i>Faint impression of a removed hinge over a small area</i>	 Hinge Mark or Remnant <i>Prominent hinged spot with part or all of the hinge remaining</i>	 Part o.g. <i>Approximately half or more of the gum intact</i>	 Small part o.g. <i>Approximately less than half of the gum intact</i>	 No gum <i>Only if issued with gum</i>
Catalogue Symbol:	★ ★	★	★	★	★	(★)
PRE-1890 ISSUES	<i>Pre-1890 stamps in these categories trade at a premium over Scott value</i>			Scott Value for “O.G.”		Scott “No Gum” Values thru No. 218
1890-1935 ISSUES	Scott “Never Hinged” Values for Nos. 219-771	Scott Value for “O.G.” (Actual value will be affected by the degree of hinging)		Disturbed Original Gum: Gum showing noticeable effects of humidity, climate or hinging over more than half of the gum. The significance of gum disturbance in valuing a stamp in any of the Original Gum categories depends on the degree of disturbance, the rarity and normal gum condition of the issue and other variables affecting quality. For example, stamps issued in tropical climates are expected to have some		
1935 TO DATE	Scott Value for “Unused”					

Covers

Minor nicks, short edge tears, flap tears and slight reduction at one side are normal conditions for 19th century envelopes. Folded letters should be expected to have at least one file fold. Light cleaning of covers and small mends along the edges are accepted forms of conservation. Unusual covers may have a common stamp with a slight crease or tiny tear. **These flaws exist in virtually all 19th century covers and are not always described. They are not grounds for return.**

Catalogue Values and Estimates

Unless otherwise noted, the currently available *Scott Catalogue* values are quoted in dollars with a decimal point. Other catalogues are often used for foreign countries or specialized areas and are referred to by their common name: *Stanley Gibbons* (SG), *Dietz*, *American Air Mail Catalogue* (AAMC), *Michel*, *Zumstein*, *Facit*, etc. Estimates are indicated with an "E." and reflect our conservative valuation in dollars. Reserves will never exceed the low end of the estimate range; they will sometimes exceed Scott Catalogue value for stamps in Extremely Fine condition.

Because of certain pricing inconsistencies in the *Scott Catalogue*—for example, blocks that have no gum, the absence of premiums for Mint N.H. items, etc.—we cannot guarantee the accuracy of values quoted for multiples, specialized items and collection lots. We generally try to be conservative, but buyers may not return a lot because of a discrepancy in catalogue value due to Scott pricing inconsistencies.

Symbols and Abbreviations (see chart above for gum symbols)

⊞	Block	E	Essay	pmk.	Postmark	No.	Scott Catalogue Number
⊞	Cover	P	Proof	cds	Circular Datestamp	hs	Handstamp
FC	Fancy Cancel	TC	Trial Color Proof	var.	Variety	ms.	Manuscript

R@ siegelauctions.com

CATALOGUES AND PRICES REALIZED

Images and descriptions for all sales going back to 1992, our Rarities sales from 1964 and selected older name sales. PDF catalogues go back to our first sale in 1931.



POWER SEARCH™

Search by Scott number or keyword through all of the sales at our website. The best resource in philately for research.

MY SIEGEL™

Save your Power Searches as want lists. We will automatically notify you when a match is included in an upcoming sale, whether it's as broad as any Columbian issue, or as narrow as a 241 graded 98. The most powerful want list in philately.

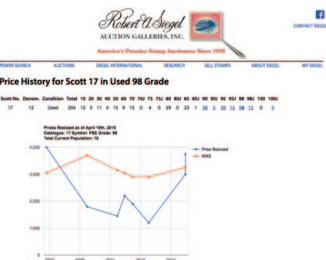


LOT TRACKER™

Never miss another lot because you were away from your computer. Log into My Siegel™, then set up notifications to get texts and/or emails 10-30 lots before yours comes up (live bidding is still through Stamp Auction Network).

CENSUS DATA FOR RARITIES

The up-to-date census data for U.S. and select International rarities are a valuable resource for buyers, sellers and researchers. Every recorded example of almost 150 different rare stamps is described and, in most cases, photographed.



GRADED PRICE HISTORY

Graphs show the realizations of each grade over time in our auctions. The data points are easily visible for independent analysis.

We have several other important features of our website, such as the Siegel Encyclopedia, Exhibits, Today in History and a Perpetual Calendar. Go to siegelauctions.com for the most comprehensive website in philately.



MORNING SESSION (LOTS 2001-2146)
THURSDAY, MAY 4, 2023, AT 10:30 A.M.

THE WORLD TRAVELER COLLECTION OF
UNITED STATES STAMPS
POSTMASTERS' PROVISIONALS



2001

- 2001 ☒ **New York N.Y., 5c Black, “ACM” Initials (9X1).** Tied by red grid with matching “Paid” in arc handstamp and “New York 15 Dec. 5cts” (1846) integral-rate circular datestamp on blue folded letter to Frederick Huth & Co., **London, England**, manuscript “*pr Boston Steamer*” and carried on the Cunarder *Caledonia*, departing Boston Dec. 16 and arriving Liverpool Dec. 30, blurry transit datestamp on front and London receiving backstamp (Dec. 31), answer docketing on back, file folds including one which creases the stamp, also small tears at left of stamp, Very Fine appearing use to London, the addressees on this cover are the same as on the Jul. 15, 1845 earliest known use (Sale 999, lot 584), with 2023 P.F. certificate..... 2,200.00

- 2002 (★) **Providence, Rhode Island, 10c Gray Black (10X2).** Unused (regummed), large top right corner margins and full other sides, light toning, appears Very Fine, also includes corner margin block of four of 5c 1898 Reprint No. 10X1R, Very Fine, each with 2021 P.F. certificate, Scott value as no-gum 10X2 and four singles 10X1R...
.....(Photo Ex/Website PDF) 1,000.00



2002EX

1847 ISSUE



- 2003 **5c Dark Brown (1a).** Huge margins all around including parts of adjoining stamps at top and bottom, very worn-plate impression, light red circular datestamp cancel, Extremely Fine Gem, a huge 5c 1847, with 2021 P.F. certificate (XF-Superb 95)..... 525.00
- 2004 **5c Red Brown (1).** With **top left corner sheet margins**, large other sides including part of adjoining stamp at bottom, intermediate impression, lightly struck red grid cancel, very minor small toned spots, appears Extremely Fine, with 2021 P.F. certificate 425.00
- 2005 **5c Red Brown (1).** Horizontal pair with **12mm left sheet margin**, other sides full to ample, intermediate impression, red grid cancels, Extremely Fine, with 2021 P.F. certificate attributing the cancel to Baltimore Md. (VF-XF 85)..... 950.00
- 2006 **10c Black (2).** With **right sheet margin**, large at bottom and ample to clear at top and left, red grid cancel, Very Fine sheet margin copy, with 2021 P.F. certificate 900.00
- 2007 **10c Black (2).** With **8mm left sheet margin**, other sides full to just touched at lower right, lightened manuscript cancel, still Very Fine sheet margin example, with 2021 P.F. certificate .. 575.00
- 2008 ☒ **10c Black (2).** Three full margins, clear at top, tied by bold red grid cancel, matching "New-York Mar. 1" (1851) circular datestamp on folded letter **to Montreal, Canada**, datelined "*Halifax, 25th Feby 1851*", manuscript "*4½*" pence rate, red Montreal receiving backstamp, bottom third of letter removed, Fine, evidently hand-carried from Halifax (probably on a Cunard vessel) to New York and then mailed to Montreal, with 2023 P.F. certificate E. 750-1,000
- 2009 **10c Black, Diagonal Half Used as 5c (2a).** Top left diagonal half, full margins at top and left, tied by blue circular datestamp cancel on piece of cover with part of addressee's name, "*Willit C. Ward Esq.*", an importer of fruit on Front St. in New York City, Very Fine, with 2021 P.F. certificate, Scott value for a full cover is \$12,500.00 E. 750-1,000



- 2010 ★ **5c Red Brown, Reproduction (3).** Without gum as issued, full margins all around, rich color, Extremely Fine, with 2021 P.F. certificate (VF-XF 85) 1,000.00
- 2011 ★ **10c Black, Reproduction (4).** Without gum as issued, large margins to clear including **left sheet margin**, Very Fine, with 2021 P.F. certificate 1,250.00

1851-56 ISSUE

- 2012 ★ **1c Blue, Ty. II (7).** Original gum, rich color, large margins to just in at top, including portion of adjoining stamp at bottom, fresh and Fine, with 2021 P.F. certificate 1,000.00
- 2013 ☒ **1c Blue, Type II, Plate 2 Crack (7 var).** Positions 23-25L2, horizontal strip of three, left stamp (Position 23) showing bottom of crack in its early state, large margins to touched at top, right stamp with tiny tear and corner crease, tied by "New-York Jan. 14" (1856) circular datestamps on buff cover to St. Joseph Mich., slightly reduced at left, Very Fine and desirable strip with this Plate 2 flaw, unlike plate cracks resulting from stress fractures during the course of printing, the Plate 2 crack is believed to have been caused by a integral flaw in the steel plate, as Plate 2 was used, the crack widened and extended downward into the fourth row, due to the nature of this unusually large crack, Ashbrook preferred to call it the "Plate 2 Flaw.", signed Ashbrook on back with his description, a well as his small notes and initials on front, with 2021 P.F. certificate. E. 1,000-1,500

- 2014 **1c Blue, Ty. III, Position 99R2 (8).** Large margins to touched at top, the bottom and lower right margins beautifully show the type characteristics, light blue circular datestamp cancel, small sealed tear at right

VERY FINE APPEARARING EXAMPLE OF THE RARE 1851 IMPERFORATE ONE-CENT TYPE III FROM POSITION 99R2. THIS POSITION PRODUCED THE BEST EXAMPLE OF TYPE III, WITH THE WIDEST BREAKS AT TOP AND BOTTOM.

Type III is defined by breaks in the outer lines at both top and bottom. Many Type III stamps have breaks that were created or enlarged by plate wear. Since the wear occurred over a period of time, a majority of stamps of this type (both unused and used) have small breaks in at least one line. The most notable exception is Position 99R2. According to the Neinken book, "The 99R2 stamp is a fresh entry, that was short transferred both at top and bottom, over an original entry that had been erased... The reason that 99R2 is the finest example of Type III is because of its very short transfer at top and at bottom, giving us the wide breaks in these lines." (p. 184).

With 2021 P.F. certificate 5,250.00

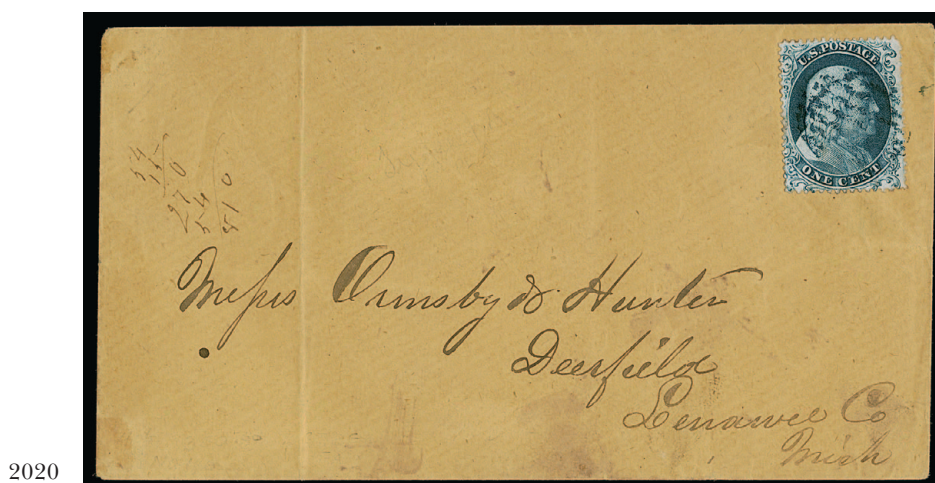


2014



- 2015 ★ **1c Blue, Ty. IV (9).** Recut once at top, disturbed original gum, huge margins to close at bottom, with portion of adjoining stamp at top, Extremely Fine, with 2021 P.F. certificate (VF-XF 85) 725.00
- 2016 **10c Green, Ty. I (13).** Three huge margins including portion of adjoining stamp at left, just in at bottom, deep rich color, light circular datestamp cancel, Very Fine and choice, with 2021 P.F. certificate 750.00
- 2017 **10c Green, Ty. II (14).** Horizontal pair, large to ample margins, very light blue cancel, Very Fine-Extremely Fine, the right stamp is choice, with 2021 P.F. certificate 340.00
- 2018 **12c Black (17).** Horizontal pair, full to ample margins, neat **blue** Cincinnati O. circular datestamp cancels, Very Fine and choice, with 2021 P.F. certificate 630.00
- 2019 **12c Black (17).** Horizontal strip of four, ample margins to touched in some places, light circular datestamp cancels, small corner crease at top left, minor edge toning mostly on back, appear Fine, Scott value as two pairs 1,200.00

1857-60 ISSUE



- 2020 ☒ **1c Blue, Ty. Ia (19).** Bottom row of Plate 4, margins to touched but nicely showing the type characteristics, tied by blue grid cancel on unsealed buff envelope to Deerfield Mich., cover with vertical fold far from stamp, some small arithmetic notations on both sides
VERY FINE SOUND EXAMPLE OF THE ONE-CENT TYPE Ia PERFORATED ON COVER.
Type Ia was produced by only 18 of the 20 bottom-row positions on Plate 4. Most examples on cover are either off-center, have small faults or are used with other stamps.
With 2021 P.F. certificate 10,500.00



- 2021 **1c Blue, Ty. III (21).** Plate 4, rich color, blue circular datestamp cancel, Fine, with 1986 P.F. certificate 1,400.00
- 2022 **5c Orange Brown, Ty. II (30).** Two, first large part original gum which covers nearly the entire back, rich color, tiny thin and face scratches, appears Extremely Fine, second with bold New York circular datestamp cancel, tiny thin, appears Very Fine, each with 2021 P.F. certificate 2,500.00
- 2023 ✉ **10c Green, Ty. I (31).** Tied by "San Francisco Cal. May 15 1858" circular datestamp on lady's **floral embossed** small cover to Dunbarton N.H., etiquette label on flap, stamp with a few short perfs and some gum toning along perfs, cover with small edge tears, otherwise Very Fine transcontinental use on a lady's cover, with 2023 P.F. certificate..... 1,300.00
- 2024 **10c Green, Ty. IV (34).** Position 65L1, recut at top, well-centered with rich color, cancelled by circular datestamp and by boxed **red** transit, fresh and Very Fine, with 1995 P.F. certificate 2,375.00
- 2025 ★ **30c Orange (38).** Original gum, h.r., bright color, attractive centering, small central thin spot, appears Very Fine, with 2021 P.F. certificate..... 1,900.00

- 2026 (★) **90c Blue (39).** Unused (no gum), wide margins and precise centering, deep rich color on bright paper
EXTREMELY FINE GEM UNUSED EXAMPLE OF THE 90-CENT 1860 ISSUE, GRADED XF-SUPERB 95 BY THE P.F.
This is the ideal stamp for the condition conscious collector who values choice centering above original gum.
With 2021 P.F. certificate (XF-Superb 95)..... 1,400.00



2026

1875 REPRINT OF 1857-60 ISSUE



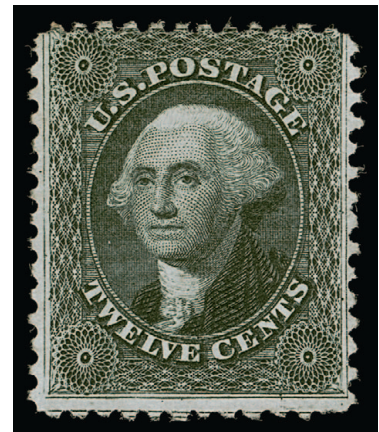
2027EX

- 2027 ★ **1c-24c 1860 Reprints (40-43, 45).** Five stamps including the 1c, 3c, 5c, 10c and 24c values, without gum as issued, each centered to a side or two and with faults, still bright colors and attractive

FINE APPEARANCE. A RARELY OFFERED GROUP OF FIVE OF THE EIGHT 1860 REPRINTS.

Each with 2021 P.F. certificate. See our website PDF for a scan of all stamps and certificates
.....(Photo Ex/Website PDF) 10,150.00

- 2028 ★ **12c Greenish Black, Reprint (44).** Without gum as issued, intense shade, centered to top, fresh and Fine, with 2021 P.F. certificate..... 2,750.00



2028



2029

- 2029 ★ **30c Yellow Orange, Reprint (46).** Without gum as issued, brilliant color, scissors-separated perfs slightly blunted at top, Fine, with clear 2021 P.F. certificate ..
..... 3,000.00

- 2030 ★ **90c Deep Blue, Reprint (47).** Without gum as issued, deep rich color on bright paper, attractive centering and margins

VERY FINE EXAMPLE OF THE 90-CENT 1860 REPRINT.

The Continental Bank Note Company reprinted the 90c stamp from the original plate of 200 subjects. 10,000 were printed (50 impressions). Only 454 were sold; the remaining 9,546 were destroyed on July 23, 1884.

Ex Creighton Hart. With 1971 and 2022 P.F. certificates. 3,750.00



2030

1861-68 ISSUES



- 2031 ★ **3c Brown Rose, First Design (56).** Original gum, rich color and choice centering, Extremely Fine, with 2021 P.F. certificate as No. 65-E15h (VF-XF 85)..... 550.00
- 2032 **10c Dark Green, First Design (62B).** Dark color of the First Design nicely contrasted by **red** circular datestamp cancel, light horizontal crease, appears Fine, with 2021 P.F. certificate..... 1,860.00
- 2033 **3c Pink (64).** Vivid Pink shade with a slight bluish cast — in fact submitted to the P.F. as Pigeon Blood Pink — bold Oct. 22, 1861 circular datestamp cancel, fresh and Fine, with 2021 P.F. certificate 575.00
- 2034 ★ **3c Rose Pink (64b).** Strip of three with **part imprint and plate no. 35 bottom selvage**, color slightly faded and outer stamps with small perf faults, otherwise Fine, despite the condition this is a very rare item — only one plate block of four with part imprint is recorded (ex Gross, Sale 1200, lot 56), this plate no. and part imprint strip is the only other Scott 64b plate no. example listed in Power Search, with 2021 P.F. certificate..... E. 500-750
- 2035 ★ **3c Lake (66).** Original gum, unmistakable Lake shade, perfs in at bottom, about Fine, a collectible example in sound original gum condition, with 2021 P.F. certificate 2,000.00
- 2036 ★ **12c Black (69).** Original gum, nicely centered but reperfed at bottom, also small corner crease at bottom left, otherwise Very Fine, with 2021 P.F. certificate 1,700.00
- 2037 ★田 **2c Black (73).** Block of four, original gum, h.r., well-centered for this tightly spaced issue, slight perf toning at left and some vertical perf separations reinforced, appears Very Fine, with 2007 P.F. certificate 2,750.00

- 2038 **2c Black, Atherton Shift (73 var).** Showing clear major double transfer at top, grid cancel, reperfed at left (as usual for this straight-edge position), purple backstamp just shows thru on forehead

FINE APPEARING EXAMPLE OF THE RARE ATHERTON SHIFT, THE MOST PRONOUNCED OF THE BLACK JACK DOUBLE TRANSFERS.

Concerning this double transfer, Ashbrook wrote: "Here we have one of the most remarkable double transfers on U. S. stamps that I have ever seen. I have for years classed the One Cent 1851, Type II, 89R2, as the No. 1 among remarkable examples of this variety and in my opinion this 2c Black Jack could well rank as No. 2. Perhaps some would even rank it equal to the 1c..." 12,000.00



2038

2039



2040



2041



- 2039 ☒ **30c Orange (71).** Vertical pair, straight edge at left, used with **10c Green (68)** and **2c Black (73)**, piece out of 2c, tied by blue grids, matching "Milwaukee Wis. Oct. 13, 1863" double-circle datestamp on orange cover to **Shanghai, China**, red "1d" Colonial credit marking, magenta "32" credit, London transit, New York and Hong Kong backstamps, stamps affected from placement near edge of cover which has some edge flaws, still a colorful and scarce use paying double the 36c rate E. 500-750
- 2040 ☒ **2c Black, Diagonal Half Used as 1c (73a).** Top right diagonal half, used with full stamp and tied by targets, "Water Street Pa. Nov. 28" circular datestamp on yellow cover to New York, stamps with light toning around edges from gum, Very Fine and attractive bisected use 1,500.00
- 2041 ☒ **3c Rose, A. Grill (79).** Tied by neat **blue** circle of diamonds cancel with "Madison Ind. Aug. 23" circular datestamp on small narrow cover to Selma Ala., overall toning which affects the stamp, otherwise Fine, with 2021 P.F. certificate 2,250.00



- 2042 E **National Bank Note Co., 3c Rose, All-Over Grill Essay, Points Down (79-E15a var).** The so-called "Biscuit Grill", bold strike of **New York City Segmented Diamond Within Circle cancellation**, known used in July 1867 and evidently applied to a number of experimental grills to test the efficacy of grilling, small crease, still Fine and rare, only approximately 12-15 examples are known, this trial cancel and its use on both regular mail and the grill essays was the subject of an article in *Chronicle* 134 by Scott Trepel (accompanied), with 2001 P.F. certificate..... E. 500-750
- 2043 **2c-3c 1867-68 Better Grills (83, 83 var, 85, 85B).** Four stamps, including No. 83 with Maltese Cross cancel, reperfed, otherwise Fine, with 2021 P.F. certificate, No. 83 var Partially Erased C. Grill, faults, otherwise Fine, with 1969 P.F. certificate submitted as No. 82, certificate states "shows the remains of an all over grill at left...", No. 85 with target cancel, sound and Fine, with 2021 P.F. certificate, finally No. 85B with segmented cork cancel, creases, appears Fine, with 2021 P.F. certificate.....
.....(Photo Ex/Website PDF) 4,350.00
- 2044 (★) **2c Black, Z. Grill (85B).** Unused (no gum), intense shade and clear grill, perfs in at bottom where a couple are short, otherwise Very Good, a presentable unused example, with 2021 P.F. certificate 6,750.00
- 2045 **2c Black, Z. Grill (85B).** Centered to left, bold **red** circular datestamp and grid duplex cancel, sound and about Fine, with 2021 P.F. certificate 1,450.00
- 2046 **3c Red, F. Grill (94).** With **freak perfs** cutting far into the stamp on two sides, scissors-separated to create "normal" margins, grid cancel, a striking freak, with 2021 P.F. certificate..... E. 200-300
- 2047 **24c Gray Lilac, F. Grill (99).** Cancelled by **fancy grid of tiny bars** of New York City, light staining spots, otherwise Fine, the 24c F Grill is rarely found with fancy cancels, with 2021 P.F. certificate 1,600.00
- 2048 (★) **90c Blue, F. Grill (101).** Unused (regummed), reperfed on at least two sides (the P.F. says three), still huge margins remain, Extremely Fine appearance, this must have been a truly massive stamp to yield these margins after all the reperfing, with 2021 P.F. certificate 5,750.00
- 2049 **90c Blue, F. Grill (101).** Clear grill, open bars cancel, tiny corner perf crease at bottom right, appears Fine, with 2021 P.F. certificate..... 2,500.00

1869 PICTORIAL ISSUE AND RE-ISSUE



2050



2051

- 2050 (★) **2c Brown (113).** Unused (no gum), rich color, choice centering and margins, Extremely Fine, with 2021 P.F. certificate (XF 90) 190.00
- 2051 ★田 **2c Brown (113).** Block of four, dark brown original gum, faults including top left stamp crease and top right stamp thin spot, hinge-reinforced perf separations, still Fine appearing and presentable..... 3,750.00



2052

- 2052 ★ **3c Ultramarine, Without Grill (114a).** Original gum, bright color, bottom left corner crease and thinned, Fine appearing and rare example of the 3c 1869 Pictorial without grill — much rarer than the high values without grill, with 1932 A.P.S. certificate signed Costales and Bartels (numbered 398), with 2021 P.F. certificate 13,000.00



2053



2054



2055



2056

- 2053 (★) **6c Ultramarine (115).** Unused (no gum), bright color, Fine, with 2021 P.F. certificate 1,050.00
- 2054 ★ **10c Yellow (116).** Original gum, vivid color, small thin spot at top right, appears Fine, with 2021 P.F. certificate 1,850.00
- 2055 **15c Brown & Blue, Ty. I (118).** Well-centered with three wide margins, unobtrusive cork cancel, slightly toned not mentioned on certificate, appears Very Fine, with clear 2021 P.F. certificate (VF-XF 85) 850.00
- 2056 **15c Brown & Blue, Ty. I, Double Grill (118 var).** Clear second grill offset from the first, rich colors, cork cancel, Fine, with 2021 P.F. certificate 1,150.00



2057



2058



2059

- 2057 (★) **24c Green & Violet (120).** Unused (no gum), bright colors, attractive centering and margins, single short perf at left, appears Very Fine, with 2021 P.F. certificate 3,000.00
- 2058 **30c Ultramarine & Carmine (121).** Well-centered with strong colors, segmented cork cancel and trace of red transit, Very Fine and choice, with 2021 P.F. certificate (VF 80) 450.00
- 2059 田 **30c Ultramarine & Carmine (121).** Block of four, strong color, typical indistinct cork cancellation, couple small flaws including bottom left stamp pulled perf, short perfs at bottom of bottom right stamp, appears Fine, with 2021 P.F. certificate 3,750.00
- 2060 田 **30c Ultramarine & Carmine (121).** Block of four, centered to top, typical cork cancellation but rather lightly struck, top right stamp tear at top, top left stamp sealed tear at left, otherwise Very Good-Fine 3,750.00



2060



2061

- 2061 **90c Carmine & Black, Re-Issue (132).** Deep rich color, essentially face-free cork cancel, corner crease at bottom right
- FINE APPEARING AND SCARCE USED EXAMPLE OF THE 90-CENT 1869 PICTORIAL RE-ISSUE.
- SMQ estimates that approximately 40 used copies exist. Most are either off-center or have small faults. With 2021 P.F. certificate 6,000.00

1870-88 BANK NOTE ISSUES



- 2062 ★ **7c Vermilion, H. Grill (138).** Original gum, h.r., clear grill points, vibrant color, perfs scissors-separated but intact (not noted on certificate), Very Fine, scarce with original gum, with 2021 P.F. certificate..... 4,250.00
- 2063 ★ **10c Brown, H. Grill, Double Grill (139 var).** Original gum, small h.r., showing clear doubling of the grill, rich color, black ink mark and small translucency at right not noted on certificate, diagonal crease at bottom right is noted, otherwise Fine example of this grill variety, with 2021 P.F. certificate..... 4,250.00
- 2064 **12c Dull Violet, H. Grill (140).** Pretty shade, neat cancel, clear grill, reperfed at left, small tear at top not noted on certificate, Fine appearance, with 2021 P.F. certificate..... 3,750.00
- 2065 ★ **15c Orange, H. Grill (141).** Slightly disturbed original gum, vibrant color, several noticeable grill points, reperfed at bottom, diagonal crease at bottom right, Fine appearance, a scarce issue, with 2021 P.F. certificate as original gum 7,500.00
- 2066 ✉ **1c Ultramarine (156).** On yellow J. B. Williams & Co. advertising cover with illustration of various types of soap on back in brown and “G” **precancel** of Glastonbury Conn., to Cumberland Md., fresh and scarce example of this precancel which we have encountered only on the J. B. Williams corner cards E. 400-500
- 2067 ★ **30c Gray Black (165).** Part original gum which covers the entire back of the stamp, h.r., bright shade, Fine, with 2021 P.F. certificate 4,000.00
- 2068 **2c Vermilion (183).** Vibrant color, with black **Glen Allen Fancy Star precancel**, short corner perf at bottom right, still Very Fine, ex Saadi, with clear 1991 P.F. certificate..... 355.00
- 2069 ★ **4c Blue Green (211).** Original gum, deep rich color, Jumbo margins, Very Fine and choice, with 2021 P.S.E. certificate (VF-XF 85 Jumbo) 225.00

COLUMBIAN ISSUE



- 2070 ★★田 **1c-3c Columbian (230-232)**. Three Mint N.H. items, including 1c bottom imprint, plate no. 151 and letter "M M" block of eight, few minor perf separations, tear in letter selvage, 2c block of nine, 3c block of six, latter two perf separations, Fine-Very Fine blocks(Photo Ex/Website PDF) 1,864.00
- 2071 ★ **3c, 5c-6c Columbians (232, 234-235)**. Imprint, plate no. and letter strips of four, original gum, few h.r., few minor perf separations, 3c one stamp thinned, Fine-Very Fine(Photo Ex/Website PDF) 1,030.00
- 2072 ★田 **30c Orange Brown, Columbian (239)**. Block of four, bottom stamps Mint N.H., top stamps h.r., rich color on bright paper, few minor perf separations, Fine-Very Fine, Scott value as singles 1,800.00
- 2073 (★) **\$1.00-\$5.00 Columbian (241-245)**. \$1.00, \$2.00, \$4.00 and \$5.00 unused (regummed), \$3.00 slightly short original gum, each stamp with varying degrees of perf tip toning from minor to more obvious on the \$5.00, \$4.00 corner crease, otherwise Very Fine, each with 2021 P.F. certificate which misses the perf toning on all except the \$5.00, P.F. also calls the \$4.00 original gum(Photo Ex/Website PDF) 4,800.00

1894-98 BUREAU ISSUE

- 2074 **2c Carmine Lake, Ty. I (249)**. Brilliant color, choice centering with Jumbo margins, duplex cancel leaves portrait clearly visible, Extremely Fine Gem, with 2010 P.S.E. certificate (XF-Superb 95 Jumbo; SMQ \$500.00), only five grade higher 7.00
- 2075 ★ **5c Chocolate, Vertical Pair, Imperforate Horizontally (255c)**. Original gum, bit heavy h.r., rich color, small tear at top and light crease at bottom left, Very Fine appearance, it is believed that most examples of this error originate from a part sheet purchased by a collector at the Richmond Va. post office, with 2021 P.F. certificate..... 4,000.00
- 2076 ★ **10c Dark Green (258)**. Right imprint and plate no. 64 strip of three, original gum, h.r., deep rich color, Fine 1,200.00



- 2077 (★) **\$1.00-\$5.00 1894-95 Bureau Issues (261-263, 276-277).** Nos. 261, 261A and 262 with 2021 P.F. certificates as original gum and sound, but we see combinations of regumming and/or reperfining, also No. 261A has perf tip toning not mentioned, otherwise Fine, No. 263 called regummed (this one might actually be o.g.) but has perf tip toning not mentioned on 2021 P.F. certificate, otherwise Fine, No. 276 called original gum and sound but with perf tip toning not mentioned, No. 277 called original gum with thinned perf, also significant perf tip toning not mentioned, otherwise Very Fine, if the P.F. was correct on all the gum calls this catalogues \$9,450.00**(Photo Ex/Website PDF)** E. 1,500-2,000
- 2078 ★★田 **2c Carmine, Ty. II-III (266-267).** Left imprint and plate no. 170 block of 15, nine left stamps Type II, six stamps at right Type III, Mint N.H. except top two stamps at upper right thinned from hinge removal, brilliant color, perf separations but not between the combination pairs, Fine appearance, only plate 170 contained a combination of both Types II and III — only three rows from one pane were Type II, leaving a total of ten positions out of the plate that can yield this combination of types, Scott value as plate block of No. 266, three combination pairs and three singles of No. 267 2,948.00
- 2079 ★ **\$1.00 Black, Ty. II (276A).** Original gum, detailed impression, few gum soaked perfs at top left, otherwise Very Fine, with 2021 P.F. certificate 1,250.00
- 2080 (★) **\$5.00 Dark Green (278).** Unused (regummed), rich color, Fine, with 2021 P.F. certificate 800.00
- 2081 ★田 **10c Brown, Ty. I (282C).** Block of four, three stamps Mint N.H., top right stamp small thin spot, intact perfs at bottom, some slight perf tip toning, otherwise Fine, Scott value as singles 1,750.00

TRANS-MISSISSIPPI ISSUE

- 2082 ★ **\$1.00 Black, Trans-Mississippi (292).** Original gum, detailed impression, certificate notes “filed bottom perforations”, this is the first time we have seen this term used and it looks reperfed to us, Very Fine appearance, with 2021 P.F. certificate 1,500.00
- 2083 ★★ **\$2.00 Orange Brown, Trans-Mississippi (293).** Mint N.H., bright color, fresh and Fine, a difficult issue to obtain in Mint N.H. condition, with 2021 P.F. certificate..... 5,750.00

PAN-AMERICAN ISSUE



2084

2084 ★ **1c Green & Black, Pan-American, Center Inverted (294a).** Large part disturbed original gum, rich colors, few faults

FINE APPEARING EXAMPLE OF THE ONE-CENT PAN-AMERICAN INVERT.

According to Johl, the 1c Pan-American Inverts were found in at least four different post offices around the country soon after release of the issue in May 1901, including Bessemer Ala., Richmond Va., Utica N.Y. and Connecticut.

With 1968 P.F. certificate noting "left corners creased and disturbed part o.g." 12,500.00



2085

2085 (★) **4c Deep Red Brown & Black, Pan-American, Center Inverted (296a).** Unused (no gum), bright colors, defective including repairs, reperfed at left and thinned

FINE APPEARING EXAMPLE OF THE 4-CENT PAN-AMERICAN INVERT.

The 4c Pan-American Invert was a special printing and not regularly issued. Examples were distributed through two official channels, and the gum on the majority of stamps without "Specimen" overprint was disturbed. In fact, because 97 of the stamps were removed from an album page, they are generally thinned or have seriously disturbed or no gum.

With 1971 P.F. certificate. 80,000.00

1902-08 ISSUE



2086



2087



2088

- 2086 ★田 **6c Claret (305)**. Bottom imprint and plate no. 1601 block of six, original gum, small h.r. at top center and in selvage, radiant color, Very Fine 850.00
- 2087 **\$2.00 Dark Blue (312)**. Rich color on bright paper, unobtrusive cancel, Very Fine, with 2021 P.F. certificate 825.00
- 2088 ★ **\$5.00 Dark Green (313)**. Original gum, deep rich color and detailed impression, Very Fine, with 2021 P.F. certificate 2,100.00



2089

- 2089 ★ **1c Blue Green, Coil (318)**. Pair, original gum, h.r., rich color
FRESH AND FINE PAIR OF THE RARE ONE-CENT 1908 HORIZONTAL COIL, SCOTT 318.
Signed several times in pencil including by Sloane. With 1964 and 2022 P.F. certificates.
..... 11,000.00



- 2090 ★ **2c Carmine, International Vending Machine Co., Perforated Approximately 12½ (320).** Pair, original gum, single h.r., brilliant color, small stain in top margin, otherwise Fine, the International Vending Machine Company installed their machines in post offices, using the 2c Shield with their own 12½ gauge perforations, the coils were replaced with the government coils in July 1908, with 2021 P.F. certificate 2,750.00
- 2091 ★★ **2c Carmine, Ty. II, Schermack Ty. III (320Ad; formerly 320d).** Mint N.H. horizontal strip of four, full Schermack Type III perforations, radiant color, pos. 2 natural inclusion at bottom, Very Fine and scarce, Scott value as hinged 750.00

LOUISIANA PURCHASE AND JAMESTOWN ISSUES

- 2092 ★田 **2c-5c Louisiana Purchase (324-326).** Blocks of four, 3c and 5c bottom stamps Mint N.H., others h.r., 3c slight overall toning, Fine-Very Fine blocks. (Photo Ex/Website PDF) 1,070.00
- 2093 ★★田 **5c Dark Blue, Louisiana Purchase (326).** Mint N.H. bottom imprint and plate no. 2098 block of four, rich color, fresh and Fine-Very Fine 1,150.00
- 2094 ★田 **10c Red Brown, Louisiana Purchase (327).** Top imprint and plate no. 2105 block of four, three stamps Mint N.H., top left stamp h.r., fresh and Very Fine 1,250.00
- 2095 ★★田 **5c Blue, Jamestown (330).** Mint N.H. block of four, deep rich color, top pair lightly toned perfs at top, otherwise Fine, with 2021 P.F. certificate 1,500.00

1908-22 ISSUES



2096



2097

- 2096 **1c Green, Attleboro Stamp Co. Private Perforations (343).** Showing all four perf teeth, cut slant to lower right, bold strike of Attleboro Mass double-oval cancel, natural paper wrinkles, faint overall toning, still Very Fine and scarce used single..... 1,000.00
- 2097 ★ **5c Blue, Coil (355).** Guide line pair, original gum, bright color, Very Fine, with 2021 P.F. certificate..... 1,500.00



2098

- 2098 ★ **10c Yellow, Coil (356).** Guide line pair, original gum, h.r., brilliant color, some perf separations at bottom, right stamp small natural inclusion in margin
- FINE APPEARANCE. A SCARCE GUIDE LINE PAIR OF THE 10-CENT HORIZONTAL COIL, SCOTT 356.
- According to Johl (Volume 1, page 181), only 10,000 of the 10c Washington coil stamp were issued. They were made especially for a New York firm to send out advertising samples, similar to the 3c Orangeburg coil. Only a few rolls were sold to the firm, and the remaining rolls were distributed to some of the large post offices across the country. Dealers acquired several rolls, but because most contemporary collectors did not collect coils, many were used and destroyed.
- With 2021 P.F. certificate..... 16,000.00



2099



2100

- 2099 ★田 **2c Carmine, Bluish (358)**. Bottom imprint and plate no. 4863 block of six, original gum, deeply blued paper, bottom left stamp small natural inclusion, Very Fine 1,000.00
- 2100 ★ **3c Deep Violet, Bluish (359)**. Original gum, small h.r., intense shade on nicely blued paper, reperfed at bottom and couple lightly toned perf tips, Fine appearance, with 2021 P.F. certificate 1,800.00



2101

- 2101 ★ **4c Orange Brown, Bluish (360)**. Original gum, rich color on nicely blued paper, small stains at bottom left along perfs and above Washington's mouth
OTHERWISE FINE ORIGINAL-GUM EXAMPLE OF THE 4-CENT ON BLuish PAPER.
The June 1910 Third Assistant Postmaster General's report states that 4,400 (eleven sheets) of the 4c were printed on Bluish Paper. It is believed that none of the 4c and 8c Bluish Paper stamps were distributed to post offices, and that all of the examples in collectors' hands reached the market through the Travers-Steinmetz exchange and the 1914 National Museum trades to H. F. Colman (12 copies) and Nassau Stamp Company (65 copies).
With 2021 P.F. certificate 27,500.00



- 2102 ★ **5c Blue, Bluish (361).** Original gum, perf tip toning throughout and in letter “E” at bottom not mentioned on accompanying certificate, otherwise Fine, with clear 2021 P.F. certificate... 6,500.00
- 2103 ★ **6c Red Orange, 13c Blue Green, 15c Pale Ultramarine, Bluish (362, 365, 366).** 15c Mint N.H., 6c and 13c original gum, 6c light perf toning at top and sides, 13c thin spot and reperfed at bottom, 15c light edge toning, otherwise Fine, each with 2021 P.F. certificate..... (Photo Ex/Website PDF) 5,100.00
- 2104 ★★ **10c Yellow, Bluish (364).** Mint N.H., vivid color, natural inclusion at upper right, some perf tip toning not mentioned on certificate, appears Fine, with 2021 P.F. certificate mentioning only the inclusion 4,000.00
- 2105 ★田 **2c Carmine, Lincoln, Bluish (369).** Right imprint and plate no. 4978 block of six, original gum, small hinge slivers in selvage, nicely blued paper, Fine, bottom right stamp “RWB” backstamp..... 2,750.00
- 2106 ★★田 **8c Olive Green (380).** Block of four, bottom right stamp Mint N.H., brilliant color and bright paper, fresh and Very Fine, with 2021 P.F. certificate (VF 80) 470.00



- 2107 **3c Deep Violet, Orangeburg Coil (389).** Rich color, wavy-line machine cancel, well-balanced margins, completely sound
EXTREMELY FINE. AN INCREDIBLY RARE SOUND AND CENTERED USED EXAMPLE OF THE 3-CENT ORANGEBURG COIL.
The Orangeburg coil was made by the Post Office Department in 1911 specifically for use by the Bell Pharmaceutical Company. The 3c coil stamps were used to send samples of their products to physicians. Due to the quantity of mail, they were put through the first-class cancelling machine at Orangeburg, New York. Because the coil stamps were used on envelopes containing products, many if not most of the surviving copies are faulty to some extent, with creases being the most common problem. The example offered here, in sound condition and with choice centering is a wonderful exception.
With 1939 A.P.S. certificate signed by noted dealers Bartels and Klemann..... 10,000.00



- 2108 ★ **3c-5c 1910-13 Coils (394-396).** Guide line pairs, original gum, rich colors, well-balanced margins, Extremely Fine, each with 2021 P.F. certificate (VF-XF 85)(Photo Ex/Website PDF) 1,325.00
- 2109 ★★ **10c Orange Yellow, Panama-Pacific (400).** Mint N.H., with **bottom plate no. 6143 selvage**, vibrant color, well-balanced margins, Extremely Fine Gem, with 2021 P.F. certificate (XF-Superb 95) 260.00
- 2110 ★★ **10c Orange Yellow, Panama-Pacific (400).** Mint N.H. with bottom selvage, vibrant color, beautiful centering, Extremely Fine Gem, with 2021 P.F. certificate (XF-Superb 95) 260.00
- 2111 ★★ **10c Orange, Panama-Pacific (400A).** Mint N.H., intense shade and impression, fresh and Very Fine, with 2021 P.F. certificate (VF-XF 85) 390.00
- 2112 ★★ **1c Green, Complete 25c Booklet (BK32).** Comprising four panes of six of No. 405b, covers are tight with some slight creasing, Fine-Very Fine complete booklet..... 1,250.00
- 2113 ★田 **10c Orange Yellow (433).** Top plate no. 6745 block of six, original gum, lightly hinged, vibrant color, faint soiling around one perf hole affects top center stamp at right, Very Fine appearance 825.00
- 2114 ★ **50c Violet (440).** Original gum, rich color on bright paper, Extremely Fine, with 2021 P.F. certificate (VF-XF 85) 450.00

- 2115 ★ **4c Brown, Coil (446).** Guide line pair, original gum, rich color on bright paper, unusually wide and balanced margins, Extremely Fine Gem, with 2021 P.F. certificate (Superb 98), by way of comparison this is the highest grade awarded by P.S.E. with two at this grade 700.00



2115



- 2116 ★ **2c Red, Ty. I, Coil (449).** Original gum, bright color, perfs in at bottom, almost Fine example of this scarce coil, with 2012 P.S.A.G. certificate..... 2,500.00
- 2117 **2c Red, Ty. I, Coil (449).** Rich color, oval duplex cancel, minute tear or split in one perf hole at top, appears Very Fine..... 650.00
- 2118 ★★ **2c Carmine Rose, Ty. I, Coil (453).** Mint N.H. joint line pair, brilliant color, Very Fine, with 2021 P.F. certificate 1,450.00
- 2119 ★ **3c Violet, Coil (456).** Joint line pair, original gum, small h.r., detailed impression, Extremely Fine, with 2021 P.F. certificate 1,300.00
- 2120 ★★ **3c Violet, Coil (456).** Mint N.H. pair, crisp impression on bright paper, well-balanced margins, fresh and Extremely Fine, with 2021 P.F. certificate (VF-XF 85) 1,200.00
- 2121 ★★ **2c Carmine, Ty. I, Imperforate Coil (459).** Mint N.H. pair, brilliant color, fresh and Very Fine, with 2021 P.F. certificate 875.00
- 2122 ★★ **\$1.00 Violet Black (460).** Mint N.H., intense shade and proof-like impression, Very Fine and attractive, with 2021 P.F. certificate 1,450.00
- 2123 ★田 **5c Carmine, Error (467).** Single error in block of nine, error Mint N.H., top center stamp h.r., brilliant color, Fine..... 900.00



- 2124 ★田 **10c Orange Yellow (472)**. Block of four, bottom stamps Mint N.H., top stamps h.r., vibrant color, fresh and Very Fine, Scott value as singles..... 740.00
- 2125 ★★ **20c Light Ultramarine (476)**. Mint N.H., brilliant color on bright paper, well-balanced margins, fresh and Extremely Fine, with 2021 P.F. certificate..... 500.00
- 2126 ★田 **20c Light Ultramarine (476)**. Block of four, original gum, lightly hinged once at center and once at top, rich color on bright paper, Very Fine and choice, with 2021 P.F. certificate..... 1,000.00
- 2127 ★田 **20c Light Ultramarine (476)**. Bottom plate no. 6920 block of six with wide selvage, original gum, bottom center stamp small h.r., bright color, few small toned spots on back, top center stamp small natural inclusion, Fine and scarce plate block 3,750.00

- 2128 ★ **30c Orange Red, Perf 10 (476A)**. Position 100 from plate no. 6917 with **bottom right corner selvage**, original gum, barely hinged (if at all), rich color, light natural paper wrinkle not noted on certificate, few trivial perf separations

FINE. A RARE AND DESIRABLE CORNER MARGIN POSITION EXAMPLE OF THE 30-CENT PERF 10 WASHINGTON-FRANKLIN ON UNWATERMARKED PAPER.

Two complete panes of 100 of Scott 476A have been certified by The Philatelic Foundation and subsequently broken into singles, blocks and four plate blocks. Many are off-center. The example offered here with selvage showing no watermark, is desirable. With 1984 P.F. certificate. 2,000.00



2128



2129

- 2129 ★ **2c Carmine, Ty. II, Coil (491).** Pair, original gum, rich color, choice centering
 VERY FINE. AN ATTRACTIVE ORIGINAL-GUM PAIR OF THE SCARCE 2-CENT ROTARY HORIZONTAL COIL, SCOTT 491.

Unlike most other issues, the horizontal coil is actually scarcer than the vertical coil. It was in production for only a short period of time before being replaced by the Type III, Scott 492.

With 1963 P.F. certificate..... 5,750.00



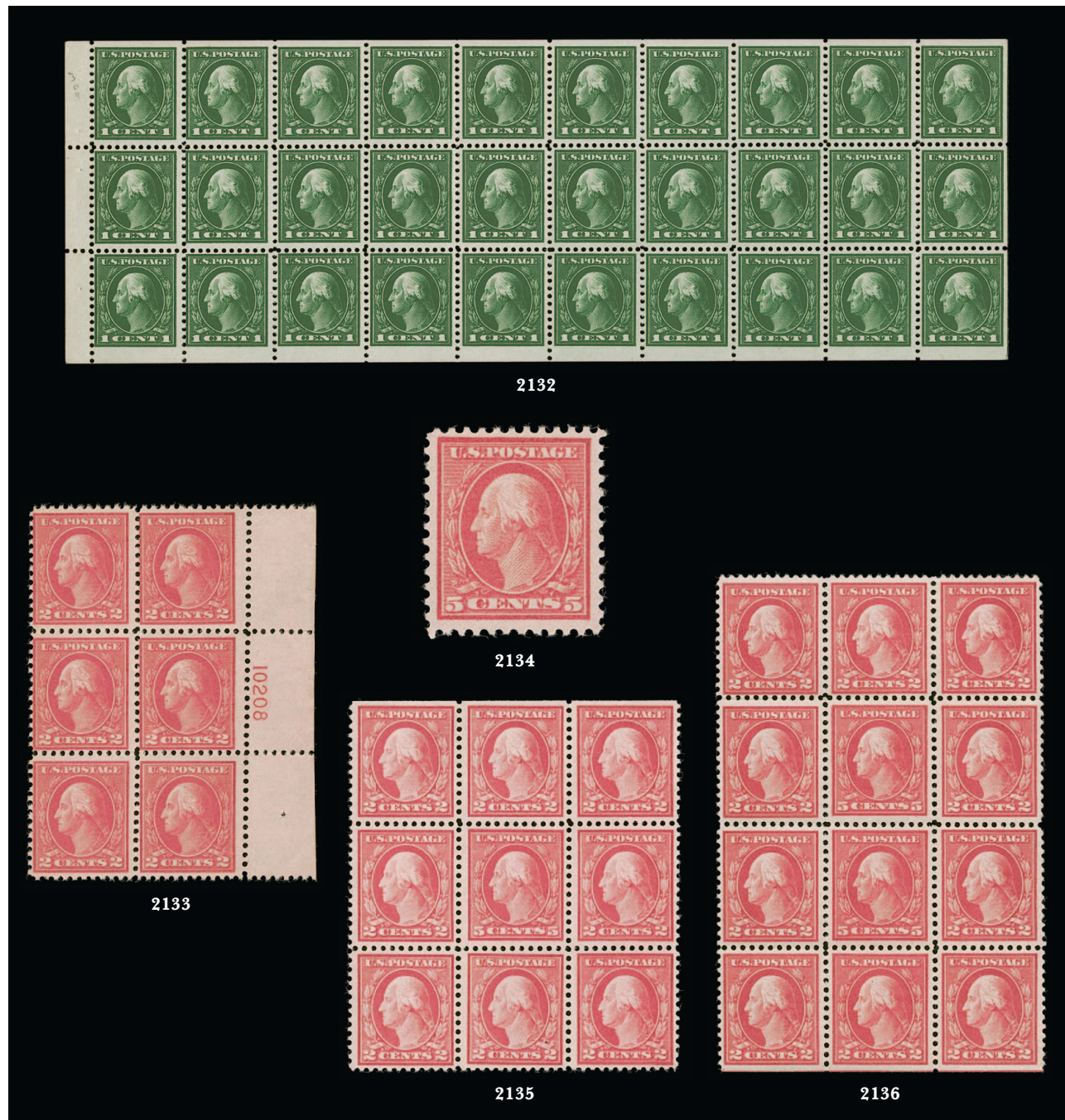
2130



2131

- 2130 ★ **1c Green, Horizontal Pair, Imperforate Between (498b).** Original gum, lightly hinged, rich color, Fine, signed in pencil, with 2021 P.F. certificate 700.00

- 2131 **1c Green, Horizontal Pair, Imperforate Between (498b).** Rich color, **cancelled** by partly clear strike of circular datestamp (ending in "Lake"?), Fine and rare, unlisted in Scott used, with 2021 P.F. certificate..... E. 400-500



- 2132 ★★ **1c Green, A.E.F. Booklet Pane (498f).** Mint N.H., deep rich color, one stamp with gum skip, Very Fine 1,700.00
- 2133 ★★田 **2c Deep Rose, Ty. Ia (500).** Mint N.H. right plate no. 10208 block of six, bright color, natural gum creases, Fine and scarce plate block, right center stamp with "RWB" back-stamp 3,750.00
- 2134 ★ **5c Rose, Error (505).** Original gum, h.r., radiant color, well-balanced margins, Very Fine and choice, with 2021 P.F. certificate (VF-XF 85) 325.00
- 2135 ★田 **5c Rose, Error (505).** Single error in block of nine, error and two center side stamps Mint N.H., brilliant color, bottom center stamp natural inclusion, Very Fine 650.00
- 2136 ★田 **5c Rose, Error (505).** Double error in block of twelve, top error Mint N.H., bottom error small glazed spot, others except bottom center 2c Mint N.H., radiant color, light natural gum crease affects errors, Very Fine 1,200.00



2137



2138

- 2137 ★ **20c Light Ultramarine, Double Impression (515c).** With right selvage, original gum, small h.r., showing part of two additional impressions at right, fresh and Fine, very scarce, the P.F. has certified only three singles, a pair with straight edge at top and a block of fifteen containing three examples of the variety, for a total of eight examples, all seem to be from the right vertical row of the pane, this is the first single we have offered since at least 1994, with 2021 P.F. certificate, undercatalogued in Scott..... 1,250.00
- 2138 ★ **2c Carmine (519).** Original gum, lightly hinged, rich color, well-proportioned margins, Extremely Fine, with 2021 P.F. certificate (VF-XF 85)..... 425.00



2139



2140

- 2139 ★ **\$2.00 Orange Red & Black (523).** Original gum, lightly hinged, bright colors, vignette shifted slightly downwards, natural perf disc inclusion at top not noted on certificate, Very Fine, with 2021 P.F. certificate (VF 80) 525.00
- 2140 **3c Deep Violet (537a).** Rich color, bold "Salem Ohio" precancel, tiny thin spot at left center, still fresh and Fine example of this color variety, scarce in used condition, our census at <https://siegelauctions.com/census/us/scott/537a> contains only four blocks of four and 17 singles, Census no. 537a-CAN-17, with 2003 P.F. certificate 1,800.00



2141

- 2141 ★ **2c Carmine Rose, Ty. II, Rotary Perf 11 x 10 (539).** With top selvage, original gum, deep rich color, fresh and Fine, with 1973 P.F. certificate..... 2,700.00



- 2142 ★★ **1c Green, Rotary (545).** Mint N.H. with top plate no. 13616 selvage, bright color, fresh and Fine, with 2021 P.F. certificate..... 550.00
- 2143 ★★ **\$2.00 Carmine & Black (547).** Mint N.H., rich colors, choice centering, Extremely Fine, with 2021 P.F. certificate (VF-XF 85)..... 275.00
- 2144 ★ **Washington-Franklin Issues Printing and Perforation Freaks.** Eight items, including 499 misperfed with foldover, 499 block with blind perfs, 500 with perfs thru plate no. in bottom selvage, 510 block of six misperfed, 517 with unusual printing flaw due to thread or foreign matter on the plate, 525a in very dark color, 543 overinked block, few faults but overall a Fine-Very Fine and unusual group, Nos. 500 and 517 with 2021 P.F. certificate(Photo Ex/Website PDF) E. 400-500
- 2145 ★★ **5c Deep Blue, Pilgrim Tercentenary (550).** Mint N.H., with wide left selvage, deep rich color, phenomenal centering, Extremely Fine Gem, with 2018 P.S.A.G. certificate (Superb 98) 70.00
- 2146 ★★田 **5c Deep Blue, Pilgrim Tercentenary (550).** Mint N.H. bottom plate no. 12427 block of six, rich color on bright paper, Very Fine 700.00

END OF MORNING SESSION

Live and Absentee Internet Bidding at Siegel

ALL INTERNET BIDDING IS NOW HANDLED DIRECTLY FROM THE SIEGEL WEBSITE

**REGISTERED BIDDERS MAY LEAVE BIDS IN ADVANCE OF THE SALE
AND BID LIVE DURING THE AUCTION**

DOWNLOAD THE SIEGEL APP FROM THE APPLE OR GOOGLE PLAY STORES

This step-by-step guide will instruct you how to register and use the bidding interface.

Start by following the simple steps to become a registered internet bidder.

Once you have been approved for bidding, you can leave bids in advance of the sale, listen to the auction and place bids live with the click of a mouse.

Registering with Siegel Auction Galleries

To bid, you must be registered and approved by Siegel.

To decide what you need to do, choose the description below that best fits you.



**I've already registered with Siegel and
have been approved by Siegel for internet bidding**

I'm a Siegel client, but I'm not registered to bid live
Go to bid.siegelauctions.com and click on **Login** at the top. Then click on the link for **Sign Up Now**. We will match your new signup to your existing account.

I want to become a Siegel client and bid in auctions
Go to bid.siegelauctions.com and click on **Login** at the top. Then click on the link for **Sign Up Now**. You will need to register and provide trade and banking references.

Internet bidding works by allowing registered bidders to observe and place bids, either before the sale or in real-time during the auction.

Live Internet Bidding will work with any browser on both PC and Mac operating systems, or with our app..

Before bidding by internet for the first time, we recommend observing an auction in progress. This will help you develop a feel for the sale tempo and bidding interface.

Log in and participate in the auction at bid.siegelauctions.com

When you're logged on as an internet bidder, the bidding interface shows a photo and description of the lot, the current bid (and your bidding status), options for placing competitive bids and buttons with bid increments.

- After you click on a bid amount, the auctioneer is immediately notified of your bid.
- Retracting a bid is not acceptable, so please bid carefully.
- You can track prior realizations from the bidding screen.



"System Down" or "Lost Connection" events do occasionally happen.

If you have any problems with Live Internet Bidding please call 212-753-6421 for immediate assistance.

AFTERNOON SESSION (LOTS 2147-2410)

THURSDAY, MAY 4, 2023, AT 1:30 P.M.

1922 AND LATER ISSUES



- 2147 ★★田 **14c Blue (565)**. 11 Mint N.H. plate blocks of six, including plate no. 19418 four tops and three bottoms (one is a wide bottom) and one left, plate no. 19419 one left, plate no. 19420 one top and one left, fresh and Very Fine group.....(Photo Ex/Website PDF) 1,320.00
- 2148 ★★ **\$1.00-\$5.00 1922-25 Issue (571-573)**. Mint N.H. P.S.E. graded group, including three \$1.00 (two XF 90, one VF-XF 85), four \$2.00 (three XF 90, one VF-XF 85), three \$5.00 (one XF 90, two VF-XF 85), fresh and Extremely Fine group, total SMQ \$1,655.00 ..(Photo Ex/Website PDF) E. 750-1,000
- 2149 ★★ **\$5.00 Carmine & Blue (573)**. Mint N.H., choice centering and margins, brilliant colors, Extremely Fine Gem, with 2008 P.S.E. certificate (XF-Superb 95; SMQ \$450.00) 180.00
- 2150 ★★田 **\$5.00 Carmine & Blue (573)**. Mint N.H. centerline block of four, brilliant colors, choice centering, Extremely Fine, with 2021 P.F. certificate 825.00
- 2151 ★ **2c Carmine, Joint Line Pair, Ty. I, II (599-599A)**. Joint line strip of four, left stamps Ty. II, right stamps Ty. I, original gum, joint line pair lightly hinged, outer stamps Mint N.H., deep rich color and attractive centering, Very Fine, with 2021 P.F. certificate 940.00
- 2152 ★田 **5c Dark Blue, Lexington-Concord (619)**. Five plate blocks, including lightly hinged top plate block of six, Mint N.H. top plate block of nine (hinged in ungummed selvage, very slight toning), Mint N.H. bottom, left and right plate blocks of six, Very Fine group.....(Photo Ex/Website PDF) 1,300.00
- 2153 ★田 **2c Carmine & Black, 5c Dark Blue & Black, Norse-American (620-621)**. Group of multiples, mostly Mint N.H., including 2c Mint N.H. top double plate nos. block of eight, also top double plate nos. block of twelve, a couple stamps hinged but most Mint N.H., 5c all Mint N.H. and includes centerline block of four, bottom arrow block of twelve, left selvage block of four and right arrow block of twelve, Very Fine group, Scott value as blocks and singles more than \$1,000.00(Photo Ex/Website PDF) E. 300-400
- 2154 ★ **2c Carmine Rose, White Plains Souvenir Sheet (630)**. Group of 17 sheets, seven Mint N.H., nine hinged (some of those only hinged in selvage with stamps Mint N.H.), finally one used sheet with Oct. 21 Exhibition cancels, overall Fine-Very Fine.....(Website PDF) 6,425.00



- 2155 ★★田 **2c Carmine, Ty. II (634A)**. Mint N.H. top left corner plate no. 19644 block of four, radiant color, fresh and Fine 3,000.00
- 2156 ★★ **1c-10c Kans., Nebr. Overprints (658-679)**. Mint N.H. sets, fresh colors, attractive centering, Very Fine with a few Extremely Fine, the 8c Kansas is particularly choice(Photo Ex/Website PDF) 962.00
- 2157 ★田 **8c Olive Green, Kans. Ovpt. (666)**. Top left and bottom right corner plate no. 18192 blocks of four, original gum, lightly hinged, Very Fine.....(Photo Ex/Website PDF) 1,400.00
- 2158 ★田 **4c Yellow Brown, Nebr. Ovpt. (673)**. Bottom right corner plate no. 18082 block of four, original gum, **doubling** of ovpt. which is particularly clear at bottom, Very Fine, this was likely caused by offset on the back of a sheet above creating a second offset on the front of this sheet, and not an actual double ovpt., still unusual and collectible, Scott value as normal 275.00
- 2159 ★★ **8c Olive Green, Nebr. Ovpt. (677)**. Mint N.H., deep rich color, outstanding centering and margins, Extremely Fine Gem, with 2009 P.S.E. certificate (XF-Superb 95; SMQ \$425.00) .. 60.00
- 2160 ★田 **10c Orange Yellow, Nebr. Ovpt. (679)**. Bottom right corner plate no. 19234 block of four, original gum, lightly hinged on top pair, bottom pair Mint N.H., fresh and Very Fine 925.00
- 2161 ★★田 **10c Orange Yellow, Nebr. Ovpt. (679)**. Mint N.H. block of four with top selvage, vivid color, Very Fine, Scott value as singles 720.00
- 2162 ★★ **3c Purple, Booklet Pane of Six (720b)**. Dramatic **miscut** with one column of normal stamps at center and two columns of partial stamps at sides, top pane in a complete booklet (BK85), booklet cover with light creases, Very Fine and striking variety, with 2021 P.F. certificate, Scott value as normal complete booklet..... 300.00



2163

- 2163 ★ **5c Blue, Kosciuszko, Horizontal Pair, Imperforate Vertically (734a)**. Original gum, redistributed over thin spots on right stamp, well-centered, Very Fine appearance, one pane of 100 was discovered, meaning only 50 pairs are known, with 2021 P.F. certificate .. 1,750.00



2164

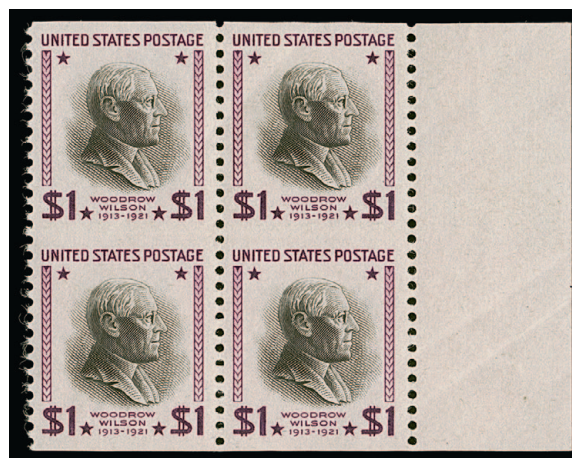


2166



2165

- 2164 ★田 **3c Dark Violet, Nicolet's Landing, Imperforate Horizontally (739a).** Block of four containing two error pairs, original gum, left pair Mint N.H., right pair lightly hinged, excellent centering, bottom right stamp light diagonal crease, still Extremely Fine, with 2021 P.F. certificate, Scott value as Mint N.H. and hinged pairs..... 1,625.00
- 2165 ★★ **2c Red, Grand Canyon, Vertical Pair, Imperforate Horizontally (741a).** Mint N.H. with natural gum creases and light pencil notation on gum, bright color, small toned spot in top margin not mentioned on accompanying certificate, appears Very Fine, with 2021 P.F. certificate 1,450.00
- 2166 ★★ **2c Red, Grand Canyon, Horizontal Pair, Imperforate Vertically (741b).** Mint N.H., natural gum creases and light pencil notations on gum, brilliant color, Fine, with 2021 P.F. certificate 1,750.00



2167

- 2167 ★★田 **\$1.00 Presidential, 1938 Printing, Vertical Pair, Imperforate Horizontally (832a).** Mint N.H. block of four with right selvage, containing two error pairs, well-centered, pencil initials and plating on backs (pos. 69-70/79-80), Extremely Fine, a very choice block of this error, with 2021 P.F. certificate (XF 90), Scott value as two pairs 2,200.00



- 2168 ★★田 **\$1.00 Presidential, USIR Wmk. (832b).** Mint N.H. block of four with wide "TOP" selvage, Very Fine, with 2021 P.F. certificate, Scott value as singles..... 800.00
- 2169 ★田 **\$1.00 Presidential, USIR Wmk. (832b).** Centerline block of four, original gum, bottom left stamp Mint N.H., bright and fresh, Very Fine and choice, with 2021 P.F. certificate, Scott value as Mint N.H..... 1,700.00
- 2170 ★★田 **\$1.00 Presidential (832).** Nine Mint N.H. top margin, markers and double plate nos. blocks of 20, representing the top two rows of the plate, variety of plate nos., Very Fine.(Website PDF) 1,440.00
- 2171 ★★田 **\$5.00 Presidential (834).** Six Mint N.H. top double plate nos. blocks of four, few different plate no. combinations, interesting range of shades, Very Fine-Extremely Fine(Website PDF) 1,950.00
- 2172 ★★田 **2c Carmine Rose, Jefferson, Silkote Paper (1033a).** Mint N.H. block of four with left selvage, brilliant color, Very Fine, with 2007 P.F. certificate (four original copies) 1,100.00
- 2173 ✉ **20c Virginia Apgar, Imperforate (2179 var).** Large imperforate margins roughly separated as the user had obvious difficulty without normal perforations, tied together with \$1.00, two 5c and 3c stamps by magenta "Sacramento California Sta. Feb. 11, 2002" double-circle datestamps on manila padded mailer to Goldenrod Fla., mailer with large tear affecting the 3c stamp (not affecting the imperf), Fine and undoubtedly rare, with 2015 A.P.S. certificate stating it is a genuine imperforate and speculating it could be printer's waste (suggests further research on that point), also stating no prior reports of this imperf, unlisted in Scott or Datz.....(Photo Ex/Website PDF) E. 300-400

AIR POST

- 2174 ★田 **16c Green, 1918 Air Post (C2).** Top plate no. 8900 and arrow block of six, original gum, outer stamps Mint N.H., h.r. in selvage, Very Fine..... 900.00
- 2175 ★田 **24c Carmine Rose & Blue, 1918 Air Post (C3).** Mint N.H. block of four and centerline block of four, the latter lightly hinged, both are well-centered, Very Fine and choice pair of blocks.....(Photo Ex/Website PDF) 870.00



- 2176 ★田 **24c Carmine Rose & Blue, 1918 Air Post (C3).** Top arrow, double plate nos. 8493/8492 and two "TOP" block of twelve, original gum, lightly hinged, Very Fine 1,250.00
- 2177 ★田 **16c Dark Blue, 1923 Air Post (C5).** Top plate no. 14828 block of six, original gum, small h.r. bottom center stamp, others Mint N.H., rich color, quite well-centered, Very Fine and choice..... 1,300.00
- 2178 ★田 **24c Carmine, 1923 Air Post (C6).** Top plate no. 14842 block of six, original gum, stamps are Mint N.H. with a few natural gum skips, tiny bit of hinging adherence in gummed selvage only, Fine-Very Fine 1,700.00
- 2179 ★★ **65c-\$2.60 Graf Zeppelin (C13-C15).** Mint N.H. set, 65c Extremely Fine, with 2021 P.F. certificate (XF 90), \$1.30 with bottom plate no. selvage and also Extremely Fine, with 2018 P.F. certificate (VF-XF 85), \$2.60 with right plate no. selvage, Very Fine, overall a fresh and choice set, Scott value without premium for the plate nos. 1,675.00
- 2180 ★★ **6c Dark Blue & Carmine, Air Post, Vertical Pair, Imperforate Horizontally (C23a).** Mint N.H. with huge bottom left corner selvage, pencil position numbers on gum, Fine and attractive position pair, with 2021 P.F. certificate 300.00

SPECIAL DELIVERY



- 2181 ★★ 10c Blue, Special Delivery (E1). Mint N.H. with **plate no. 495 wide bottom right corner selvage**, hinged only in un gummed portion of selvage at right where reinforcing perf separations, deep rich color, Very Fine and attractive position single, with 2021 P.F. certificate 1,300.00

2182



- 2182 ★★ 10c Blue, Special Delivery (E1). Mint N.H. with right selvage, brilliant color and choice centering
EXTREMELY FINE MINT NEVER-HINGED EXAMPLE OF THE 1885 FIRST SPECIAL DELIVERY ISSUE.
With 2021 P.F. certificate (XF 90) 1,300.00
- 2183 ★★ 10c Blue, Special Delivery (E2). Mint N.H. with **top plate no. 552 selvage**, natural straight edge at right, wide margins and attractive centering, few minor perf separations at left, Very Fine, with 2021 P.F. certificate 1,150.00
- 2184 ★ 10c Ultramarine, Special Delivery (E6). With **top plate no. 5244-09 selvage**, original gum, essentially perfect centering with Jumbo margins, lightened pencil notation in selvage not mentioned on certificate, Extremely Fine Gem, with 2022 P.F. certificate (XF-Superb 95 Jumbo) 230.00
- 2185 ★ 10c Ultramarine, Special Delivery (E9). Original gum, wide margins and essentially perfect centering, Extremely Fine Gem, with 2021 P.F. certificate (Superb 98) 190.00
- 2186 ★★ 10c Ultramarine, Special Delivery, “Pink Back” (E11 var). Mint N.H., gorgeous color, wide margins and choice centering, Extremely Fine, with 2022 P.F. certificate (XF 90), a footnote in Scott states that Pink Backs are “valued at approximately five times more than the normal stamp”, Scott value as normal 45.00



- 2187 ★★ **10c Ultramarine, Special Delivery, “Pink Back” (E11 var).** Mint N.H., gorgeous color, wide margins and choice centering, Extremely Fine, with 2022 P.F. certificate (XF 90), a footnote in Scott states that Pink Backs are “valued at approximately five times more than the normal stamp”, Scott value as normal 45.00
- 2188 ★★田 **15c Deep Orange, Special Delivery (E13).** Two Mint N.H. left plate no. blocks of six, plate nos. 16833 and 16835, brilliant colors, fresh and Very Fine.....(Photo Ex/Website PDF) 1,400.00
- 2189 ★★田 **10c Ultramarine, Registration (F1).** Group of three Mint N.H. multiples, including block of four, block of four with top plate no. and part imprint selvage, finally bottom imprint and plate no. strip of three, Fine-Very Fine trio, normal block with 2021 P.F. certificate(Photo Ex/Website PDF) 1,760.00
- 2190 ★田 **10c Ultramarine, Registration (F1).** Left imprint, plate no. 5720 and letter “A” block of six, original gum, h.r. at top, Fine-Very Fine 1,600.00

POSTAGE DUE

- 2191 ★ **1c Brown (J1).** Top imprint and plate no. 316 strip of five, original gum, right three stamps Mint N.H., pos. 4 with small adherence on gum, left two stamps h.r., rich color and decent centering, few perf separations, toned perf at lower right of pos. 5, appears Very Fine, Scott value as singles..... 960.00
- 2192 ★ **30c-50c Brown (J6-J7).** Original gum, 30c lightly hinged, rich colors, 50c with particularly wide margins, Fine, with 2023 and 2021 P.F. certificates respectively..... 1,050.00



2193

- 2193 (★) **1c Deep Brown, Special Printing (J8).** Unused (no gum), deep rich color, two small thin spots and couple slightly short perfs at top, Fine appearing example of this rare stamp, the 1c, 2c and 3c are the rarest values of the American Bank Note Co. Postage Due Special Printings, for the 1c William Mooz estimates 500 were sold, but it is possible that as many as 400 purchased by G. B. Calman were destroyed, it is widely accepted that nearly 9,000 1c stamps sold as Special Printings were actually regular issues, with 1950 and 2022 P.F. certificates 6,500.00

- 2194 (★) **2c Deep Brown, Special Printing (J9).** Unused (no gum), attractive centering and rich color, few slightly nibbed perfs at left, gently cleaned to remove toning at top, otherwise Very Fine, the reported sale figures for the rare 1c, 2c and 3c Postage Due Special Printings probably include orders filled with regular stamps, as all three are far rarer than the reported sales numbers would suggest, with 2016 P.F. certificate 6,000.00



2194



2195

- 2195 (★) **3c Deep Brown, Special Printing (J10).** Unused (no gum), rich color and detailed impression, thin spot at upper left

FINE APPEARANCE. THE 3-CENT IS THE RAREST OF THE 1879 POSTAGE DUE SPECIAL PRINTINGS.

Although 436 copies were reported sold, it is believed that 100 copies were destroyed in the lot purchased by G.B. Calman.

With 1976 Friedl and 2022 P.F. certificates..... 8,000.00

- 2196 ★ **5c Deep Brown, Special Printing (J11).** Original gum, detailed impression and classic cameo of the Special Printings, attractive centering, small thin spot at center
VERY FINE APPEARING ORIGINAL-GUM EXAMPLE OF THE 5-CENT POSTAGE DUE SPECIAL PRINTING.

It has been estimated that only 249 of the 5c Postage Due Special Printing reached the public. Signature on back. With 2016 and 2022 P.F. certificates... 13,000.00



2196



2197

- 2197 (★) **10c Deep Brown, Special Printing (J12).** Unused (no gum), deep rich color, just a few slightly nibbed perfs called "few small perf flaws" on most recent certificate, Fine appearance, it has been estimated that no more than 174 examples of the 10c Postage Due Special Printing reached the public, with 1950 and 2022 P.F. certificates 2,900.00

- 2198 ★ **30c Deep Brown, Special Printing (J13).** Original gum, deep rich color, tips of two perfs at top with tiny bit of extraneous purple ink, Fine appearance, it has been estimated that no more than 179 examples of the 30c Postage Due Special Printing reached the public, the vast majority of these with original gum are faulty, with 1967 and 2022 P.F. certificates 7,000.00



2198



2199

- 2199 ★ **50c Deep Brown, Special Printing (J14).** Large part original gum which covers more than half the back, wonderfully rich color and detailed impression

FINE SOUND EXAMPLE OF THE 1879 50-CENT POSTAGE DUE SPECIAL PRINTING.

It has been estimated that no more than 179 examples of the 50c Postage Due Special Printing reached the public.

With 1961 and 2022 P.F. certificates. Scott value as original gum..... 7,000.00



- 2200 ★ **50c Red Brown (J21)**. Original gum, rich color and well-centered, unpunched perf at top and small natural inclusion at left, still Very Fine, with 2021 P.F. certificate 1,800.00
- 2201 ★ **1c Vermilion (J29)**. Original gum, bright color, thinned at top from prior hinge removal, appears Fine, with 2021 P.F. certificate 2,350.00
- 2202 ★★田 **1c-2c Deep Claret (J38-J39)**. Mint N.H. top imprint and plate no. blocks of six, 1c plate no. 267, 2c plate no. 60, deep rich colors, Fine-Very Fine (Photo Ex/Website PDF) 900.00
- 2203 ★★田 **3c Deep Claret (J40)**. Mint N.H. top imprint and plate no. 70 block of six, wonderful depth of color, fresh and Fine top plate block 1,750.00
- 2204 ★★田 **3c Deep Claret (J40)**. Mint N.H. bottom imprint and plate no. 70 block of six, deep rich color, Fine 1,750.00
- 2205 ★ **30c-50c Deep Claret (J43-J44)**. Original gum, bright colors, Very Fine, with 2021 P.F. certificates (Photo Ex/Website PDF) 975.00
- 2206 ★★ **50c Rose Carmine (J50a)**. Mint N.H., vivid color in the Rose Carmine shade, fresh and Fine, with 2021 P.F. certificate 3,000.00
- 2207 ★★ **3c Carmine Lake (J54)**. Mint N.H., gorgeous color, tiny perf thin at top, appears Fine, with 2021 P.F. certificate 3,000.00



2208

- 2208 ★ **50c Carmine Lake (J58).** Original gum, deep rich color, centered to top left
FINE ORIGINAL-GUM EXAMPLE OF THE 1914 50-CENT POSTAGE DUE. ONE OF THE RAREST OF ALL POSTAGE DUE STAMPS.
Scott No. J58 has the highest catalogue value of any regularly issued Postage Due stamp. This stamp is a key to any meaningful collection of the Postage Due issues.
With 2021 P.F. certificate 11,500.00



2209



2210



2211

- 2209 **1c Rose (J59).** Radiant color, attractive margins and centering, inverted "Olympia Wash." precancel, Very Fine..... 750.00
- 2210 ★★田 **30c Carmine Rose (J66).** Mint N.H. block of four, bright color, fresh and Fine, with 2021 P.F. certificate, Scott value as singles..... 880.00
- 2211 ★★田 **50c Carmine Rose (J67).** Mint N.H. block of four with **plate no. 5533 and part imprint right selvage**, some slight toning in perfs at top, appears Very Fine, Scott value as singles without premium for the plate no. 1,300.00
- 2212 ★★田 **½c Carmine Rose (J88).** Four Mint N.H. matched sets of four plate blocks from each of the corners of the plate, 16 plate blocks in total, three different plate nos. including 26289, 26660 (two sets) and 26661, fresh and Very Fine(Photo Ex/Website PDF) 1,920.00



2212EX

OFFICIALS



- 2213 ★ **10c Yellow, Agriculture (O5).** Original gum, h.r. at top, brilliant color, well-centered with Jumbo margins, Extremely Fine, with 2021 P.F. certificate (XF 90 Jumbo)... 525.00
- 2214 ★ **1c Carmine, Executive (O10).** Original gum, bright color, Very Fine, with 2021 P.F. certificate..... 900.00
- 2215 ★ **2c Carmine, Executive (O11).** Original gum with small adherence, bright color, Very Fine, with 2021 P.F. certificate as “previously hinged” 575.00
- 2216 ★ **6c Carmine, Executive (O13).** Original gum, bit heavily hinged, bright color and choice centering, Very Fine, with 2021 P.F. certificate as “previously hinged” (VF 80) ... 900.00
- 2217 ★田 **2c Vermilion, Interior (O16).** Block of 15 in 5 x 3 format, original gum, most stamps Mint N.H., pos. 2, 5 and 11 lightly hinged, a few stamps at bottom with a hint of oxidation but accompanying certificates notes only pos. 15 as such, Fine-Very Fine large multiple, with 2021 P.F. certificate, Scott value as singles..... 2,130.00
- 2218 ★★ **10c Vermilion, Interior (O19).** Mint N.H. top imprint and plate no. 109 strip of six, selvage at left, bright color, perfs in at bottom, Very Good, with 2022 P.F. certificate, Scott value as singles without premium for the format 960.00
- 2219 ★田 **10c Vermilion, Interior (O19).** Two blocks of four, original gum, first with bottom left stamp Mint N.H., that stamp is Extremely Fine, others hinged and Very Fine, second block with selvage at left, left two stamps Mint N.H., Fine-Very Fine, with 2022 P.F. certificates, Scott value as singles(Photo Ex/Website PDF) 830.00



- 2220 (★) **30c Purple, Justice (O34).** Unused (no gum), bright color, Fine, with 2021 P.F. certificate 625.00
- 2221 ★ **90c Purple, Justice (O34).** Original gum, h.r., bright color, shallow thin spot, appears Very Fine..... 1,900.00
- 2222 ★ **2c Dull Blue, Navy (O36a).** Top imprint and plate no. 50 strip of six, selvage at left, original gum, few h.r. in selvage, small pencil notation in selvage and slight gum soak at top edge of selvage, neither mentioned on certificate, Fine-Very Fine, with 2022 P.F. certificate, Scott value as singles without premium for the format 1,200.00
- 2223 ★ **24c Dark Green, State (O65).** Large part disturbed original gum which covers most of the back, rich color, outstanding centering, slight gum-soaked perfs at top could be ameliorated (not mentioned on certificate), Extremely Fine, with 2022 P.F. certificate (XF-Superb 95), the perfect stamp for one whose primary goal is choice centering rather than pristine gum 550.00



2224



2225

- 2224 ★ **\$2.00 Green & Black, State (O68).** Slightly disturbed original gum, fresh colors, tiny pinhole in "S" of "State", appears Very Fine, with 2016 P.F. certificate 1,800.00
- 2225 **\$2.00 Green & Black, State (O68).** Bold cork cancel with additional bit of manuscript at center, faults including tear at left and corner crease, otherwise Fine, scarce used stamp, almost none we have encountered are sound 3,000.00



2226

2226 (★) **\$5.00 Green & Black, State (O69).** Unused (no gum), bright colors, well-centered

VERY FINE SOUND UNUSED EXAMPLE OF THE \$5.00 STATE DEPARTMENT OFFICIAL.

With 2016 P.F. certificate 3,750.00

2227 ★ **\$10.00 Green & Black, State (O70).** Original gum, mild h.r., deep rich color, attractive centering and margins

VERY FINE ORIGINAL-GUM EXAMPLE OF THE \$10.00 STATE DEPARTMENT OFFICIAL.

The large format State Department dollar values are notorious for poor centering and very often come with faults as well. This is a desirable sound example with decent centering.

With 2016 P.F. certificate 4,500.00



2227



2228

2228 ★ **\$20.00 Green & Black, State (O71).** Original gum, bright colors and crisp impressions

VERY FINE ORIGINAL-GUM EXAMPLE OF THE \$20.00 STATE DEPARTMENT ISSUE.

With 2016 P.F. certificate 5,000.00



- 2229 ★ **7c Brown, Treasury (O76).** Original gum, rich color, choice centering, bright and fresh, Extremely Fine, with 2022 P.F. certificate (XF 90) 250.00
- 2230 ★★田 **10c Brown, Treasury (O77).** Mint N.H. block of four, deep rich color, top right stamp with natural gum wrinkles, Fine, with 2022 P.F. certificate incorrectly locating the wrinkles on the top left stamp and also calling them “natural paper wrinkles” (there is no evidence of them on the front so we go with gum wrinkles), Scott value as singles 2,100.00
- 2231 ★ **12c Brown, Treasury (O78).** Original gum, fresh color, extra wide margins and well-centered, Very Fine and choice, with 2022 P.F. certificate (VF 80 Jumbo) 350.00
- 2232 ★田 **15c Brown, Treasury (O79).** Block of four, original gum, slightly glazed on bottom pair, top pair much less evident but we conservatively call that pair hinged as well, rich color, Fine 1,400.00
- 2233 **2c Rose, War (O84).** Block of four, original gum, lightly hinged, bright color, bottom pair Very Fine, top pair Fine, with 2021 P.F. certificate 1,100.00
- 2234 ★ **90c Rose, War (O93).** Original gum, pretty pastel color, choice centering and margins, Extremely Fine, with 2022 P.F. certificate (XF 90)..... 225.00

- 2235 ★ **1c Yellow, Agriculture, Soft Paper (O94).** Without gum as issued, vibrant color, choice centering with well-proportioned margins, slight nibbed perf at upper left not mentioned on certificate

EXTREMELY FINE APPEARING EXAMPLE OF THE 1879 ONE-CENT AGRICULTURE AMERICAN BANK NOTE COMPANY PRINTING ON SOFT PAPER.

With clear 2021 P.F. certificate (VF-XF 85). 5,750.00



2235



2236



2237EX

- 2236 ★★田 **6c Vermilion, Interior, Soft Paper (O99)**. Mint N.H. bottom left corner imprint and plate no. 56 block of 32, bright color, perf separations in a number of places including some in plate block of 12, still fresh and Very Fine, Scott value as hinged 600.00
- 2237 ★田 **3c Brown, Treasury, Soft Paper (O109)**. Two original gum multiples, block of four with bottom part imprint selvage, three stamps Mint N.H., bottom right hinged, Fine-Very Fine, also horizontal block of eight, bottom left stamp Mint N.H., others hinged, small stain between pos. 3/7 not mentioned on certificate, still Very Fine, with 2022 P.F. certificates(Photo Ex/Website PDF) 1,340.00



2238

- 2238 ★ **90c Brown, Treasury, Soft Paper (O113)**. Original gum, nicely centered but achieved by reperforating at right, also small thins at top, otherwise Very Fine example of this scarce issue, with 2021 P.F. certificate 10,000.00

NEWSPAPERS AND PERIODICALS



- 2239 (★) **\$3.00 Vermilion, 1875 Issue (PR25).** Unused (no gum), bright color, Fine, with 2021 P.F. certificate..... 975.00
- 2240 (★) **84c-\$12.00 1875 Issue (PR22, PR26-PR28).** Four unused high-value Continental Newspaper issues, including Nos. PR22, PR26-PR28, no gum except for PR26 part original gum, each with faults including thins or reperfed, otherwise Fine and unusual opportunity to acquire four of these scarce stamps at once, each with 2021 P.F. certificate (Photo Ex/Website PDF) 8,500.00
- 2241 ★ **\$24.00 Dark Gray Violet, 1875 Issue (PR29).** Original gum, deep dark color, Fine, with 2021 P.F. certificate..... 4,750.00
- 2242 ★ **9c Gray Black, 1875 Special Printing (PR38).** Without gum as issued, intense shade, slightly nibbed perf at top not mentioned on certificate, appears Fine, with clear 1999 P.F. certificate 1,200.00
- 2243 ★ **12c Pale Rose, 1875 Special Printing (PR40).** Without gum as issued, bright shade, straight edge at top, slightly nibbed perf at bottom left not mentioned on certificate, Fine, with clear 2004 P.F. certificate..... 1,600.00
- 2244 ★ **60c Pale Rose, 1875 Special Printing (PR44).** Without gum as issued, brilliant color, attractive centering
 VERY FINE AND CHOICE EXAMPLE OF THE 60-CENT 1875 CONTINENTAL NEWSPAPER SPECIAL PRINTING. RARE IN THIS CONDITION.
 Only 222 were sold, most of which are off-center and/or have small faults.
 Signed Bartels. With 1992 P.F. certificate..... 4,750.00



2244



2245

- 2245 ★ **72c Pale Rose, 1875 Special Printing (PR45).** Without gum as issued, bright color, light toning along perf tips not mentioned on old certificate, appears Fine, with clear 1975 P.F. certificate 4,500.00

\$1.92 DARK BROWN, 1875 SPECIAL PRINTING, SCOTT PR48



2246

2246 ★ **\$1.92 Dark Brown, 1875 Special Printing (PR48).** Without gum as issued, deep rich color, well-centered and nicely balanced margins

EXTREMELY FINE. AN OUTSTANDING EXAMPLE OF THE RARE \$1.92 1875 CONTINENTAL NEWSPAPER SPECIAL PRINTING. ONLY 41 WERE SOLD.

The \$1.92 value of the 1875 Continental Newspaper Special Printing marks the start of the rarities of the set. We have offered only about a dozen unduplicated examples in all of our Rarities sales going back to 1964 and in our regular auctions going back to 1994. The stamp offered here is not included in that count.

With 1993 P.S.E. certificate 20,000.00

- 2247 ★ **2c Intense Black, 1883 Special Printing (PR80).** With top right corner selvage, without gum as issued, intense shade, Very Fine and attractive position single, with 2021 P.F. certificate 1,750.00



2247



2248

- 2248 ★ **12c Pink, 1894 Issue (PR95).** Original gum, pretty pastel shade, well-centered, Very Fine, with 1991 P.F. certificate 2,400.00

- 2249 ★ **\$2.00 Scarlet, 1895 Unwatermarked Issue (PR108).** Original gum, fiery color, well-centered, Very Fine and choice, with 1992 P.F. certificate..... 2,250.00



2249



2250

- 2250 ★ **\$5.00 Ultramarine, 1895 Unwatermarked Issue (PR109).** Original gum, deep rich color, fresh and Very Fine, with 1992 P.S.E. certificate 2,250.00



2251

- 2251 ★ **\$20.00 Slate, 1895 Unwatermarked Issue (PR111).** Original gum, barely hinged, intense shade on bright paper, proof-like impression

VERY FINE AND CHOICE ORIGINAL-GUM EXAMPLE OF THE \$20.00 1895 UNWATERMARKED NEWSPAPER ISSUE.

With 2004 P.F. certificate 3,250.00

- 2252 ★ **\$50.00 Dull Rose, 1895 Unwatermarked Issue (PR112).** Original gum, radiant color, wide margins and well-centered

EXTREMELY FINE ORIGINAL-GUM EXAMPLE OF THE \$50.00 1895 UNWATERMARKED BUREAU ISSUE.

With 1986 P.F. certificate 2,750.00



2252



2253

- 2253 ★ **\$100.00 Purple, 1895 Unwatermarked Issue (PR113).** Original gum, rich color, some slight perf tip toning at top not mentioned on accompanying certificate, Very Fine appearance, with clear 1997 P.F. certificate..... 3,500.00

PARCEL POST



2254



2255



2256

- 2254 ★★田 **4c Carmine Rose, Parcel Post (Q4).** Mint N.H. bottom imprint and plate no. 6360 block of four, bright color, Very Fine and choice, unpriced in Mint N.H. condition in this format, Scott value as hinged 325.00
- 2255 ★田 **5c Carmine Rose, Parcel Post (Q5).** Top imprint and plate no. 6222 block of six, original gum, h.r. including in selvage where reinforcing perf separations, bright color, selvage reduced slightly into imprint, Fine-Very Fine 975.00
- 2256 ★田 **75c Carmine Rose, Parcel Post (Q11).** Top plate no. 6287 block of six, original gum, hinged in selvage only, bright color, well-centered, top selvage reduced, Extremely Fine centering 2,500.00

POSTAL STATIONERY



2257



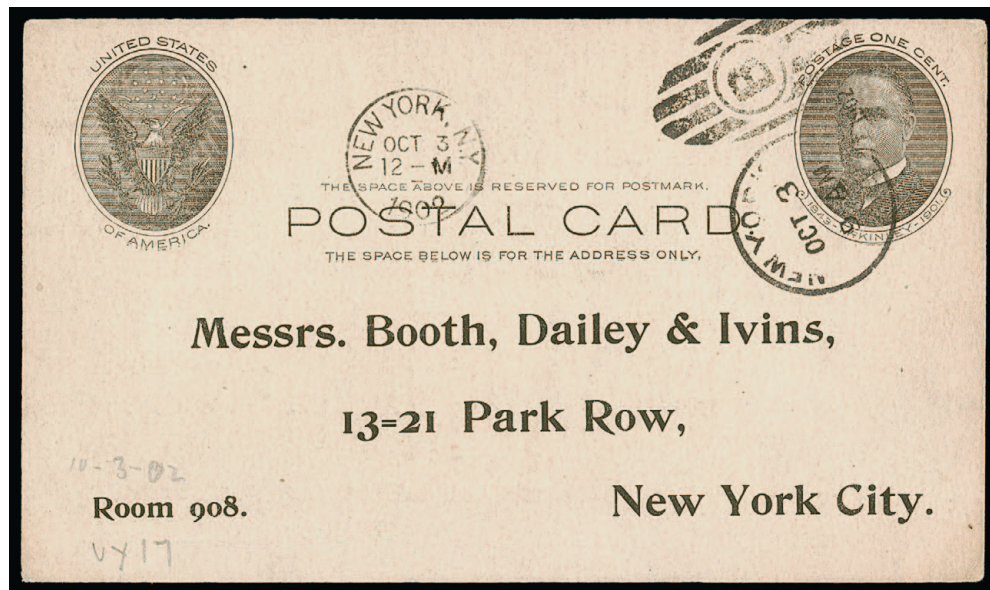
2258

- 2257 **5c Columbian, Slate Brown Error of Color, Full Corner (U350a).** 60 x 62mm, fresh and Very Fine example of this popular error which is easily identified 700.00
- 2258 ✉ **6c on 6c Carmine on White entire, Air Post, Die AM10, Surcharge Error (UC20a; UPSS AM69).** Size 13, knife 78, watermark 43, border type 2, unused, fresh and Very Fine, a rare and unusual error, the surcharge was intended for the 5c entire, the use on a 6c entire was superfluous, with 1964 P.F. certificate 1,500.00



2259
front and back

- 2259 ☒ **1c Black on Buff, Postal Card, Printed on Both Sides (UX7b; USPCC S6c).** Mint card with printing on back with inverted orientation to front, one side small toned spots, otherwise Very Fine and scarce, this is the first non-watermark major error on a United States Postal Card and is much scarcer than generally understood (likely less than 10 exist) 1,200.00



2260

- 2260 ☒ **1c Black on Buff, Full-Face McKinley Postal Card (UX17; USPCC S21).** With printed Booth Dailey & Ivins address and so-called “garbage card” text on back, “New York N.Y. Oct. 3 9AM 1902” duplex cancel, also with “New York N.Y. Oct. 3 12-M 1902” circular datestamp at left, faint traces of corner bends are barely visible — much better condition than usual for this rare used card
VERY FINE. A CHOICE AND RARE USED EXAMPLE OF THE FAMOUS FULL-FACE MCKINLEY POSTAL CARD.
A Power Search review found only a handful of other used cards offered in our sales since 1993 and we have sold only two others since 2006. 3,750.00
- 2261 **Cut Squares Collection.** 70 on dealer’s approval pages, mostly unused, including Nos. U1, U4, U11 (2), U16, U29 (3, two used), U42 (3), U43, U44, U45 (2, one used), W51 (used), U95, U97a, U98, U100, U101, U106, U196, U206, several other better including some Officials, few small faults, overall Fine-Very Fine, a valuable group(Website PDF) E. 2,000-3,000
- 2262 ☒ **Postal Card Balance.** Six unused postal cards, including two of No. UX27D with preprinted card, UX47 (3) and UY10 (folded), Very Fine group(Website PDF) 2,150.00

HUNTING PERMITS



- 2263 ★★ **\$1.00 Blue, 1934 Hunting Permit (RW1).** Mint N.H., wide margins and choice centering, natural horizontal gum crease near top, still an Extremely Fine Gem, with 2023 P.F. certificate.... 775.00
- 2264 ★★ **\$1.00 Rose Lake, 1935 Hunting Permit (RW2).** Mint N.H. with **top plate no. F 131982 selvage**, bright color, Very Fine 700.00
- 2265 ★★ **\$1.00 Rose Lake, 1935 Hunting Permit (RW2).** Mint N.H., fresh and bright color, Very Fine 700.00
- 2266 ★★ **\$1.00 Chocolate, 1939 Hunting Permit (RW6).** Mint N.H. with **wide top plate no. 141428 selvage**, choice margins and centering, Extremely Fine, with 2023 P.F. certificate (XF 90)..... 250.00
- 2267 ★★ **California, \$1.00 1971 Pintails, \$1.00 1972 Canvasbacks, Hunting Permits (CA 1, 2).** One of each, Very Fine..... 1,450.00
- 2268 ★ **Hunting Permits Balance.** Two groups of material, first is approximately 37 Federal items, starting with RW1 and other early issues with some duplication, also including some plate blocks of later issues, mostly original gum, Fine-Very Fine, several certificates accompany, second group is state-related with a few singles plus more than ten complete booklets of Texas Archery Hunting or White-Winged Dove stamps, years 1976-80, also a few sheets or panes, Very Fine, see our website PDF for a complete scan(Website PDF) E. 1,000-1,500
- 2269 **Hunting Permit Stamps on Licenses.** Interesting group of 16 items, earliest and most recognizable are RW1 and RW2 on Form 3333 cards, both stamps with small faults, both with 2023 P.F. certificates, also RW1 on 1934 Illinois license, stamp with creases, with 2023 P.F. certificate, three other RW1 on other types of licenses, one with P.F. certificate declining opinion on when it was affixed, rest are issues between RW3 and RW38 on license from Michigan, Iowa, Montana, Minnesota, etc., mixed condition as these normally are found, still Fine and unusual assemblage, see our website PDF for a complete scan.....(Photo Ex/Website PDF) E. 1,000-1,500



2270

SAVINGS STAMPS

- 2270 ★ **\$5.00 Deep Green, War Savings, Rouletted 7 (WS3).** Original gum, lightly hinged, detailed impression, horizontal crease near top, appears Very Fine, with 2021 P.F. certificate... 1,200.00

- 2271 ★★ **\$5.00 Deep Blue, War Savings (WS4).** Mint N.H., wide margins and outstanding centering. Extremely Fine, a superb example and exceedingly difficult stamp to find in Mint N.H. condition — never mind centered with wide margins, we have not offered another Mint N.H. example since 2008 and that stamp was not in the same class of centering as this example, with 2007 P.F. certificate (XF 90) 600.00



2271



2272

- 2272 (★) **\$5.00 Orange on Green, War Savings (WS6).** Unused (regummed), intense color, Very Fine, with 2021 P.F. certificate 1,200.00



2273

- 2273 (★) **\$1.00 Red on Green, Treasury Savings (TS1).** Unused (regummed), deep rich color, typical centering for this very difficult stamp but without the thins that are endemic to this paper (half the examples we have offered have thins), Fine, with 2021 P.F. certificate, Scott value as original gum 3,750.00

- 2274 **Savings Stamp Collection.** Scott album of unused singles, blocks, plate blocks, folders, EFOs and other items, some duplication, some better including Nos. S1a and S1c, includes Postal Savings, Defense Postal Savings, War Savings, Treasury Savings, few faults to be expected, many Fine-Very Fine, a fascinating collection, meticulously catalogued by the owner at \$14,876.00.....*Not illustrated* E. 3,000-4,000

TELEGRAPH STAMPS

- 2275 ★ **California State Telegraph Co., 1870-75 Issues (5T1-5T2, 5T4-5T8).** Complete less No. 5T3, with extra used 5T7, unused and mostly original gum except No. 5T2 used, most with a small fault but a couple are sound including 5T1, Fine-Very Fine or appear so, each with 2022 P.F. certificate
(Photo Ex/Website PDF) 4,025.00



2275EX



2276

- 2276 ★ **City & Suburban Telegraph Co., 1c-3c Black, Se-Tenant Strip (6T1-6T3).** Strip of all three values, without gum as issued, full margins to barely in at right, 3c thin and vertical crease between 1c and 2c

FINE-VERY FINE. A RARE SE-TENANT STRIP OF ALL THREE VALUES OF THE CITY & SUBURBAN TELEGRAPH COMPANY ISSUE.

The rows of the New York City & Suburban issue comprise six stamps in 2c-1c-1c-1c-2c-3c denominations. This rare multiple comes from the right three positions in the row of six stamps — the only positions that can yield a se-tenant multiple of all three denominations. The small faults on this strip are normal for the soft wove paper used for this issue.

With 2022 P.F. certificate..... 7,500.00



2277



2278



2279

- 2277 ★ **City & Suburban Telegraph Co., 1c Black (6T1).** Without gum as issued, full margins to just clear at bottom, thin spot slightly breaks the paper — typical for this, appears Very Fine, with 2022 P.F. certificate 650.00
- 2278 ★ **City & Suburban Telegraph Co., 2c Black (6T2).** Without gum as issued, ample even margins, light diagonal crease at bottom left but free of the more serious faults common to these, Very Fine for this, with 2022 P.F. certificate 950.00
- 2279 ★ **City & Suburban Telegraph Co., 3c Black (6T3).** Without gum as issued, full margins all around, intense shade, tiny thin spot and diagonal crease, very typical for this issue, appears Very Fine, only one position in each row yielded a 3c stamp, as such it is the scarcest of the three City & Suburban issues..... 1,100.00



- 2280 ★ **Colusa, Lake & Mendocino Telegraph Co., 1876, 5c Black (7T1).** Original gum, fresh and Fine, with 2022 P.F. certificate 1,100.00
- 2281 ★ **North American Telegraph Co., 1899-1907 Franks (10T1-10T5, 10T7-10T8).** Set missing only No. 10T6, original gum, a few with small flaws detailed on the certificates, Fine-Very Fine appearance, each with 2022 P.F. certificate(Photo Ex/Website PDF) 5,825.00
- 2282 (★) **Postal Telegraph Co., 1895-98 Issues (15T12, 15T14, 15T18).** Unused, including two of No. 15T12 (one original gum, one regummed), other two no gum or part disturbed gum (15T14), small faults detailed on the certificates including perf tip toning, Fine-Very Fine appearing group of the better "Good for One Message" issues, each with 2022 P.F. certificate(Photo Ex/Website PDF) 2,000.00
- 2283 ★ **Postal Telegraph Co., Balance (15T30/15T49A).** Five items including four singles and a block of four, original gum Nos. 15T30, 15T36 and 15T39, each of these sound, No. 15T42 no gum and pulled perf, finally original gum block of No. 15T49A, overall Very Fine group, the singles each with 2022 P.F. certificate..(Photo Ex/Website PDF) 2,640.00
- 2284 (★) **Postal Telegraph Co., 1912, Blue (15T37).** Unused (no gum), choice centering and margins, Very Fine, with 2022 P.F. certificate, Scott value as original gum..... 850.00
- 2285 ★ **Postal Telegraph Co., 1913, Violet (15T38).** Original gum, choice centering and fresh color, Very Fine, with 2022 P.F. certificate..... 1,250.00

- 2286 ★ **Postal Telegraph Co., 1917, Dark Blue (15T48).** Original gum, wide margins and choice centering, small natural inclusion in right margin

EXTREMELY FINE AND RARE EXAMPLE OF THE 1917 POSTAL TELEGRAPH COMPANY ISSUE WITH LARGE HAND-STAMPED YEARDATE.

We have offered only one other example of Scott 15T48 since keeping computerized records 30 years ago (ex Born) and that stamp had a large tear. This sound example is a great rarity of the Telegraph issues.

With 2022 P.F. certificate..... 2,500.00



2286



2287

- 2287 ★ **Postal Telegraph Co., 1918, Dark Blue (15T49).** Original gum, minor h.r. at top, rich color, wide margins and well-centered, short crease at lower right

VERY FINE APPEARING AND RARE EXAMPLE OF THE 1918 POSTAL TELEGRAPH COMPANY ISSUE WITH LARGE HAND-STAMPED YEARDATE.

This is only the fourth example of this issue we have offered since keeping computerized records 30 years ago. Each of the others had either tropicalized gum or was adhering to the interleaving.

With 2022 P.F. certificate..... 2,300.00



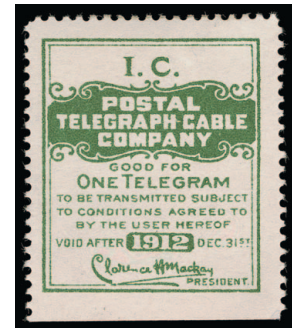
2288



2289



2290



2291

- 2288 ★★ **Postal Telegraph Co., 1910, Carmine, Chicago Great Western, Official (15TO4).** Original gum, excellent centering and bright color, Extremely Fine, we have offered only two others since keeping computerized records 30 years ago and one of them had a fault, with 2022 P.F. certificate (XF 90)..... 750.00
- 2289 ★ **Postal Telegraph Co., 1911, Carmine, Chicago Great Western, Official (15TO5).** Original gum, outstanding centering and margins, Extremely Fine and scarce, with 2022 P.F. certificate (XF 90) 600.00
- 2290 ★ **Postal Telegraph Co., 1913, Carmine, Chicago Great Western, Official, Perf 12 (15TO7a).** Original gum, bright color, small tear at top, Very Fine appearance and rare, the perf 12 version of this (15TO7a) is much scarcer than the perf 14 (15TO7), with 2022 P.F. certificate 1,500.00



2292

- 2291 ★ **Postal Telegraph Co., 1912, Dark Green, Illinois Central Railroad, Official (15TO14).** Original gum, well-centered, Very Fine and scarce, with 2022 P.F. certificate ... 1,250.00
- 2292 ★ **Postal Telegraph Co., 1913, Dark Green, Illinois Central Railroad, Official (15TO15).** Original gum, rich color, outstanding centering, small extraneous blue ink mark in frame at top, appears Extremely Fine, a scarce issue, we have offered only three others since keeping computerized records 30 years ago — each had either gum or condition problems (one was defective), with 2022 P.F. certificate..... 1,500.00



2293

- 2293 ★ **Postal Telegraph Co., 1908, Violet, Old Dominion Steamship Co., Official (15TO17).** Original gum, h.r., pretty pastel color, light horizontal crease at top
 VERY FINE APPEARING ORIGINAL-GUM EXAMPLE OF THE POSTAL TELEGRAPH COMPANY'S "O.D." OFFICIAL ISSUE FOR USE BY OLD DOMINION STEAMSHIP COMPANY.
 This is the key rarity of the Postal Telegraph Company Official issues (and is matched in Scott value only by the 1916 Violet, 15T47A).
 With 2022 P.F. certificate..... 4,000.00



- 2294 ★ **Postal Telegraph Co., 1909, Yellow, El Paso Southwestern Railroad, Official, Watermarked (15TO25 var).** Original gum, clear watermark visible outside of fluid, bright color, Very Fine, with 2022 P.F. certificate, unlisted in Scott as watermarked, value as normal 850.00
- 2295 (★) **Postal Telegraph Co., 1910, Yellow, El Paso Southwestern Railroad, Official (15TO26).** Unused (no gum), vibrant color, Very Fine, with 2022 P.F. certificate, Scott value as original gum 1,500.00
- 2296 ★ **Postal Telegraph Co., Officials, Balance (15TO3/15TO28).** Six stamps with 2022 P.F. certificates, all but one with original gum, including Nos. 15TO3 (no gum), 15TO5 (corner crease), 15TO9 (perf tip thin), 15TO27, 15TO28 (two, one disturbed gum), Very Fine or appear so.....(Photo Ex/Website PDF) 2,950.00
- 2297 ★★田 **United States Telegraph-Cable-Radio Carriers, 1947, 5c, 10c Olive Bister (17T1-17T2).** Mint N.H. pane of nine, eight stamps are 5c, bottom right stamp is the scarce 10c, exceptionally fresh, Very Fine, with 2022 P.F. certificate..... 900.00
- 2298 ★ **American District Telegraph Co., 5c Blue on Wove, Special Delivery, Rouletted (unlisted in Scott).** Kramer Ty. III, roulettes at top and left and red no. 1721 printed in left margin, disturbed original gum, some creases, otherwise Very Fine and rare, the Kramer book states "very few copies are known, all unused" (p. 22), unlisted in Scott..... E. 300-400
- 2299 **Telegraph Collection.** Scott album of singles, multiples, complete books, company envelopes, few telegrams and several unlisted items, also few collateral items, few faults to be expected, a Fine-Very Fine and attractive collection, owner's catalogue value (ticker with total per page accompanies) \$12,204.00Not illustrated E. 2,000-3,000

POST OFFICE SEALS



2300



2301



2302

- 2300 ★ **Post Office Registry Seal, 1875 Special Printing (OXF2).** Without gum as issued, radiant color, faint vertical crease, appears Fine, scarce, we have not offered another example in ten years, with 2021 P.F. certificate 3,000.00
- 2301 **Black on White, Typeset Seal (LOX1).** Type I, wide margins, clear strike of purple “Newfane Vt. Registered Jul. 27, 1916” double-circle datestamp, Very Fine and rare, only eleven used off-cover examples recorded (Kotanchik, p. 196) 350.00
- 2302 ★ **1913 Christmas Seal, Ty. I (WX11).** Original gum, deep rich colors, Very Fine and choice example of this scarce issue, we have offered only two others since keeping computerized records 30 years ago, with 2022 P.F. certificate 1,400.00

SANITARY FAIRS



2303



2304



2305



2306

- 2303 ★★ **Army Relief Bazaar, Albany N.Y., 10c Black (WV2).** Mint N.H., large margins, diagonal crease at upper left, Very Fine appearance, with 2022 P.F. certificate, Scott value as hinged 700.00
- 2304 ★ **National Sailor's Fair, Boston, 10c Green (WV3).** Original gum, lightly hinged, brilliant color, Very Fine and choice, with 1996 P.F. certificate 700.00
- 2305 ★ **Brooklyn and Long Island Sanitary Fair, (15c) Green (WV4).** Disturbed original gum, h.r., full and even margins, rich color, Very Fine, with 1997 P.F. certificate 1,000.00
- 2306 ★ **Brooklyn Sanitary Fair, 5c Black on Rosy Buff (WV6).** Original gum, deep shade, small thin spot at bottom right not noted on certificate, Very Fine appearance, with 1996 P.S.E. certificate 1,000.00



2307

- 2307 ★ **Metropolitan Fair, New York, 10c Red (WV9).** Original gum, h.r., large margins to clear, rich color

VERY FINE. A RARE SOUND ORIGINAL-GUM EXAMPLE OF THE 10-CENT METROPOLITAN SANITARY FAIR ISSUE.

Fewer than 20 examples are recorded and many are faulty or are cut into the design.
With 1997 P.F. certificate..... 5,000.00



2308

- 2308 **Soldier's Fair, Stamford Conn., 15c Pale Brown (WV15).** Large even margins, bold part strike of red "Stamford Ct. Jul. 27" (1864) circular datestamp

EXTREMELY FINE. THIS IS THE FINEST OF ONLY FIVE RECORDED USED EXAMPLES OF THE STAMFORD SOLDIERS' FAIR STAMP.

The Stamford Soldiers' Fair stamps were issued during the fair on July 27-29, 1864. Only 14 Stamford Soldiers' Fair stamps are recorded in total, including five used.

With 2008 P.F. certificate..... 6,500.00

- 2309 ★ **Sanitary Fairs Balance.** Three items, including WV7 with original gum, toned spot and scuff in right margin, WV8 without gum, last is WV14 with large part original gum and a diagonal crease and thin spot, Fine-Very Fine appearance, each with P.F. certificate.....
.....(Website PDF) 1,725.00

CONFEDERATE STATES



- 2310 ★ **Knoxville Tenn., 5c Brick Red on Grayish Laid (47X1).** Original gum, h.r., ample margins, thin spots, Very Fine appearance, with 2021 P.F. certificate..... 1,750.00
- 2311 **Nashville Tenn., 5c Carmine (61X2).** Full margins to clear, bright color nicely complemented by blue Nashville circular datestamp, Very Fine, with 2021 P.F. certificate 800.00
- 2312 **Petersburg Va., 5c Red (65X1).** Full margins to just in, unobtrusive strike of blue circular datestamp at left, some faint edge toning, Fine, with clear 2021 P.F. certificate ... 500.00
- 2313 (★) **10c Dark Blue, Hoyer & Ludwig (2b).** Unused (no gum), clear margins to ample, rich color, Very Fine 650.00
- 2314 ★田 **10c Dark Blue, Hoyer & Ludwig (2b).** Block of four, **right pair Mint N.H.**, huge margins including part of adjoining stamps at left, creases affect all but top left stamp, tear in bottom left margin outside of design not noted on certificate, Extremely Fine appearance, with 2021 P.F. certificate 2,750.00
- 2315 **2c Green (3).** Large margins, tied by “Richmond Va. Jun. 11” circular datestamp on piece, fresh and Very Fine alternative to a cover which catalogues \$3,500.00, with 2021 P.F. certificate, Scott value as used 750.00
- 2316 ★ **10c Rose (5).** Original gum, h.r., large and even margins, stain spots and filled thin spot, otherwise Very Fine, with 2021 P.F. certificate 2,400.00



- 2317 **2c Brown Red (8).** Vertical pair, large margins to just in at upper left where small nick, tied by red "Greensborough N.C. Sep. 19" circular datestamps on piece, cancel impressed heavily causing breaks in stamp paper (described on certificate as punctures), appears Very Fine, with 2021 P.F. certificate, a pair on cover catalogues \$3,250.00, Scott value as used pair..... 1,225.00
- 2318 **10c Blue, Frameline (10).** Showing intact frameline at top and part of framelines at sides, on piece, light strike of Mobile Ala. double-circle datestamp, small scissors-cut in top left margin, Fine, with 2021 P.F. certificate..... 2,500.00
- 2319 **10c Blue, Die A (11).** Three large margins, just in at bottom, tied by blue Farmville Va. circular datestamp on unusually small **Farmville Female College** cover to Petersburg Va., slight overall wear, Very Fine, an unusual small college cover, with 2002 C.S.A. certificate..... E. 300-400
- 2320 **10c Dark Blue, Die A (11b).** Large margins, tied by "Mayesburg S.C. Aug. 15" circular datestamp on brown **wallpaper** cover to Sumter S.C., opened for display, some slight toning at top of stamp not noted on certificate, Very Fine and attractive, with 2021 P.F. certificate..... E. 300-400
- 2321 **10c Blue, Die A, Perforated 12½ (11e).** Tied by **Army grid** cancel on green cover to Charleston S.C., missing part of top flap, some slight edgewear, Very Fine, with 2021 P.F. certificate, Scott value \$900.00..... E. 200-300
- 2322 **Confederate Balance.** 12 items, including used Nos. 52X1 (decline opinion on cancel), 1 (3 singles and a pair), 3 (one used, one unused), 4 pair, 4b pair, 12 on cover, also Sperati of No. 9, some faults, some appear Fine-Very Fine, three with certificates.....(Website PDF) E. 750-1,000

CANAL ZONE



2323



2324



2325

- 2323 ★ **1904, 2c Rose, "Canal Zone" Inverted (1a).** Both "Panama" reading up, slightly tropicalized original gum, brilliant color, Very Fine, only 100 produced, signed Bloch, with 2022 P.F. certificate as original gum 1,000.00
- 2324 ★ **1904, 5c Blue, 10c Yellow, "Canal Zone" Inverted (2a, 3a).** Tropicalized original gum, 10c pulled perf at bottom with small thin, Fine appearance, only 100 of each produced, 10c signed Bloch and with 2022 P.F. certificate 1,550.00
- 2325 ★ **1904, 8c on 50c Bister Brown (15).** Slightly tropicalized original gum, bright color, trivial gum soak at upper left not noted on certificate, otherwise Very Fine, only 450 were printed with "Panama" 13mm long, signed Bloch, with 1980 Friedl certificate, Scott Catalogue notes "On No. 15 with original gum, the gum is almost always disturbed. Unused stamps are valued thus." 2,000.00
- 2326 ★ **1906, 2c Red & Black, Ovpt. Reading Down, Double Ovpt., One Diagonal, one "Zone Canal" (23h).** Tropicalized original gum, rich color, showing clear second overprint, nick at bottom, gum soak at upper right, otherwise Very Fine and very scarce, perhaps 7-8 are recorded, with 2022 P.F. certificate..... 4,000.00



2326



2327



2328

- 2327 ★ **1909, 2c Vermilion & Black, Ovpt. Reading Up, Vertical Pair, Imperforate Horizontally (32a).** Slightly tropicalized original gum, bright colors, fresh and Very Fine, only 20 pairs were produced, with 2022 P.F. certificate (VF-XF 85) 1,000.00
- 2328 ★ **1909, 5c Deep Blue & Black, Ovpt. Reading Up, Double Ovpt. (33a).** Original gum, lightly hinged, with **bottom left corner selvage**, rich colors, Very Fine, with 1996 P.F. certificate..... 375.00



2329

- 2329 ★ **1920, 2c Orange Vermilion & Black (47).** Original gum, h.r., bright color, fresh and Very Fine example of the Mt. Hope Ty. III overprint, the rarity of this stamp in unused condition is reflected by the difference in Scott Catalogue values of \$2,750.00 unused versus \$60.00 used, with 1994 P.S.E. certificate..... 2,750.00



- 2330 ★★ **1920, 2c Orange Vermilion & Black, Double Ovpt. (56a).** Mint N.H., with wide bottom selvage, Very Fine and choice, only 100 printed, with 1995 P.F. certificate, Scott value as hinged.. 500.00
- 2331 ★ **1924, 5c-1b Coat of Arms, Unissued Set (68 var-69 var; CZSG 69.A-69.G).** Seven stamps representing the complete set of the unissued Coat of Arms values above the 2c, slightly tropicalized original gum, rich colors, 15c natural inclusion, Very Fine, these were prepared but never issued as the use of overprinted U.S. stamps began in April 1925, 600 sets were sent to the Director General of Posts of Panama, ostensibly for transmission to the UPU in Switzerland, a small number of sets ended up in the hands of dealers, the balance of the supply was destroyed in 1937(Photo Ex/Website PDF) 2,450.00
- 2332 ★ **1926, 5c Dark Blue, "Canal" Inverted (86b).** In horizontal pair with normal, left stamp the error (Position 7 in the sheet), straight edge at top as always, certificate notes "tropicalized gum traces" which to us looks like normal tropicalized gum, Very Fine, approximately 30 are known, with 2022 P.F. certificate..... 950.00
- 2333 ★ **1926, 17c Black, "Zone" Only, "Zone Canal" (91a, 91c).** First with bottom selvage and tropicalized original gum, second Mint N.H., Fine, only 40 of first and 450 of second were printed, with 2022 P.F. certificates(Photo Ex) 1,275.00
- 2334 ★ **1914, 10c Rose Carmine, Postage Due (J3).** Original gum, h.r., bright color, reperfed at top, Fine appearance, with 2022 P.F. certificate..... 900.00
- 2335 ★★ **1925, 10c Rose Red, Postage Due, Double Ovpt. (J20c).** Mint N.H., showing clear doubling of the overprint, Fine, only one pane of 100 received the second overprint and they all seem to be centered similarly, with 2022 P.F. certificate, Scott value as hinged..... 450.00
- 2336 ★ **Canal Zone Balance.** 52 items, including unused Nos. 1 (2), 1d var with "Panama" 15mm long, 4-8, 10a, 14b, 23c, 24c, 36a, 39e, 46b, 48, 58, 61a, 67, 71b (2, one used), 71d, 84b, 91c and O8, pairs including 13-13b, 20-20a, 20-20b, block of four of Nos. 8, plate block of No. 77 (2) and J16, also UX2, UX2d, U15 entire, few other better, some faults, some Fine-Very Fine, an interesting group with many varieties, 18 with certificates(Website PDF) E. 2,000-3,000
- 2337 **Canal Zone Collection, 1904-76.** Scott album of unused and used singles, multiples, entires and covers, wide range of issues represented, includes Air Post, Air Post Official, Postage Due, Officials, few faults to be expected, a Fine-Very Fine and comprehensive collection, meticulously catalogued by the owner at \$14,640.00.....Not illustrated E. 3,000-4,000

- 2338 S CUBA, 1899, 10c on 10c Blue, Special Delivery, Five Dots in Curved Frame Above Messenger's Head, "Specimen" Ovpt. Ty. E (E1aS-E). Original gum, single h.r., natural straight edge at left, deep rich color, clear "Specimen" overprint applied diagonally over the running messenger, Fine, a rare example of the five dots in curved frame variety which comes solely from plate no. 882, with 2022 P.F. certificate..... 5,250.00



2338



2339EX

- 2339 S CUBA, 1899, 1c-10c Deep Claret, Postage Due, "Specimen" Ovpt. Ty. E (J1S-E to J4S-E). Original gum, h.r., rich colors, 2c light bend, Fine, a scarce set, 10c with 2022 P.F. certificate (Photo Ex/Website PDF) 2,100.00

- 2340 Cuba Balance. 13 items, including used Nos. 179B, 189, 191, 196-197 pair on piece, 203, unused including Nos. 225 (imprint and plate no strip of three), E1, also 221S-E thru 226S-E, few faults, appear Fine, seven with certificates (Website PDF) E. 400-500

GUAM

- 2341 ★ 1899, 10c Brown, Ty. II (9). Original gum, pretty shade, fresh and Fine example of this scarce issue, with 1989 P.F. certificate 2,750.00



2341



2342



2343

- 2342 ★ 1899, 50c Orange (11). Original gum, h.r., brilliant color, Very Fine and choice, with 2022 P.F. certificate 350.00
- 2343 1899, \$1.00 Black, Ty. I (12). Horizontal pair, blue cork cancels, Fine, Scott value as singles..... 800.00



2344

- 2344 ★ **1899, \$1.00 Black, Ty. II (13).** Original gum, lightly hinged, intense shade and impression, fresh and Fine, the \$1.00 Type II exists only as a Special Printing, most surviving examples are defective to some degree, with 2022 P.F. certificate..... 3,750.00



2345EX

- 2345 S **1899, 1c-\$1.00 Ovpts., Specimen Ovpts. (1S-E to 12S-E, E1S-E).** Original gum, h.r., rich colors, \$1.00 small thin spot, Fine-Very Fine, 50c and E1 with P.F. certificates.....
(Photo Ex/Website PDF) 2,775.00
- 2346 ★ **Guam Balance.** Eight items, including unused Nos. 11, 12, E1, M1, M2, M7a, M7b, also M4 used entire, few faults, appear Fine, six with certificates.....(Website PDF) E. 500-750
- 2347 ★ **Guam Collection, 1899-1930.** Scott album pages of unused stamps, including Nos. 7 (2), E1, few others, few faults, otherwise Fine-Very Fine, owner's catalogue value..... 787.00

HAWAII



2348



2349



2350

- 2348 ★ **1853, 13c Dark Red, Thick White Wove (6).** Original gum, h.r., clear margins to touched at bottom right corner, bright color, soiling at bottom, Fine appearance, with 2022 P.F. certificate ...
 900.00
- 2349 (★) **1863, 1c Black, Grayish (15).** Plate 4-A, Type V (Westerberg Position 5), unused (no gum), large margins, Very Fine and choice, with 2022 P.F. certificate (VF-XF 85) 650.00
- 2350 (★) **1865, 5c Blue on Blue, "Hawaiian Postage" (21).** Plate 9-A, Type IV (Westerberg Position 8), unused (no gum), clear margins, Very Fine, with 2022 P.F. certificate 900.00



2351



2352

- 2351 (★) **1893, 18c Dull Rose, Black Ovpt., Pair, One Without Ovpt. (71g).** Horizontal strip of three, right stamp without the overprint, unused (no gum), bright color, center stamp with some extraneous printer's ink, Very Fine and very rare, we have offered only three others since keeping computerized records and none had gum, with 2022 P.F. certificate, Scott value as with gum 3,500.00
- 2352 **1894, 25c Violet Brown (R10).** Crisp impression nicely complemented by red 1900 large "Paid" with date cancel, horizontal crease at top, Very Fine appearance, with 2022 P.F. certificate..... 1,000.00
- 2353 **Hawaii Balance.** 29 items, including used Nos. 8 and 50, unused Nos. 9 (3), 15, 16, 19, 20, 22, 24, 25, 26, 27, 28a, 52C, 63, 69 (3), O1-O6, also UY3 and UY4, some with faults, overall appear Fine-Very Fine, 20 with certificates.....(Website PDF) E. 2,000-3,000
- 2354 ★ **Hawaii Collection, 1853-96.** Scott album of mostly unused, including blocks, entires, Postal Cards, Revenues, wide range of issues with duplication, few with no gum counted at half Scott value, few faults, overall Fine-Very Fine, meticulously catalogued by the owner at \$13,192.00Not illustrated E. 2,000-3,000

PHILIPPINES



2355EX



2356



2357

- 2355 ★ **1899-1901, 50c-\$5.00 Regular Issues (212, 223-225).** No. 223A unused (regummed), No. 225 part original gum, others original gum, Fine-Extremely Fine group, all except 50c with 2022 P.F. certificates (\$5.00 graded XF 90).....(Photo Ex/Website PDF) 2,950.00
- 2356 ★ **1903, \$2.00 Dark Blue (238).** Original gum, rich color on bright paper, Very Fine and choice, with 2022 P.F. certificate (VF-XF 85) 550.00
- 2357 ★ **1903, \$5.00 Dark Green (239).** Original gum, h.r., rich color, wide margins, Extremely Fine, with 2022 P.F. certificate (VF-XF 85)..... 800.00



2358

- 2358 (★) **1944, 2c Rose, “Victory” Ovpt. (463).** Unused (no gum), straight edge at left (all examples of No. 463 must have a straight-edge), Very Fine, scarce, we have only offered three other unused examples since keeping computerized records, the census compiled by Geoffrey Brewster in *Possessions* records only seven unused and six used, signed Bloch, with 1974 Friedl certificate 1,250.00

- 2359 (★) **1944, 2c Rose, “Victory” Ovpt. (463B).** Unused (no gum), rich color FRESH AND VERY FINE. AN EXCEEDINGLY RARE EXAMPLE OF THE 2-CENT PHILIPPINES “VICTORY” OVERPRINT WITH SMALL “COMMON-WEALTH”. ONE OF THE RAREST OF ALL “VICTORY” OVERPRINTS.

In a series of articles on the “Victory” overprints published in *Possessions*, Geoffrey Brewster notes he is aware of four genuine copies of this issue, plus three he considers suspect. None are known used. All the examples he notes are faulty including thins and stains. One has no gum, one has part gum, and two have gum with gum stains. Mr. Brewster notes that the quantity of 41 issued, which is listed in Scott Catalogue, is not based on any official numbers. He estimates only 10-15 were issued, and also notes it is the rarest “Victory” among the ordinaries. Mr. Brewster must not have been aware of the example offered here, which comes from a multi-generational collection. This is the first we have offered since keeping computerized records.

Signed Bloch and with additional signature. With 2022 P.F. certificate. 2,000.00



2359



2360

- 2360 ★ **1944, 6c Dark Brown, “Victory” Ovpt. (466).** Original gum, h.r., rich color, natural paper crease at upper right not noted on certificate, Very Fine and very scarce, only 64 were produced, the census compiled by Geoffrey Brewster and published in *Possessions* lists 31 known examples, signed Bloch, with 1974 Friedl certificate..... 3,250.00

- 2361 ★ **1944, 6c Dark Brown, “Victory” Ovpt. (468).** Traces of original gum, deep rich color, choice centering, few small faults VERY FINE APPEARANCE. A SCARCE EXAMPLE OF THE 6-CENTAVO DARK BROWN “VICTORY” OVERPRINT.

Only 206 were produced. Each of the few examples we have offered over the last 20 years had tropicalized gum or interleaving adhering to the gum. The census compiled by Geoffrey Brewster and published in *Possessions* lists 47 known examples. This is the first we have offered since 2013.

Signed Bloch. With 1974 Friedl certificate. 4,000.00



2361



2362



2363

- 2362 ★ **1944, 6c Orange, “Victory” Ovpt. (470).** Slightly tropicalized original gum, small h.r., vibrant color, Very Fine, only 141 were issued, Geoffrey Brewster records 31 unused singles, three blocks of four and seventeen used singles, with 1963 P.F. certificate 1,750.00
- 2363 **1944, 12c Ultramarine, “Victory” Ovpt. (475).** Neat open grid cancel, bright color, slight overall soiling not noted on certificate, otherwise Very Fine, scarce, only 221 were produced, Geoffrey Brewster records 51 unused (some in blocks), eight used singles off cover and 19 covers (one with a block), signed several times including by Bloch, two backstamps, with 2022 P.F. certificate 1,100.00

- 2364 ★ **1944, 12c Bright Blue, “Victory” Ovpt. (476).** Tropicalized original gum, bright color, choice centering, faint corner crease at top left not noted on certificate

EXTREMELY FINE APPEARANCE. THIS IS ONE OF THE RAREST OF ALL “VICTORY” OVERPRINTS. ONLY 36 WERE PRODUCED, AND APPROXIMATELY 14 ARE KNOWN UNUSED.

The census compiled by Geoffrey Brewster and published in *Possessions* lists 25 known genuine examples. Of these, 14 are unused and eleven are used (six of which are on covers).

Signed Bloch. With 1974 Friedl certificate. 7,000.00



2364

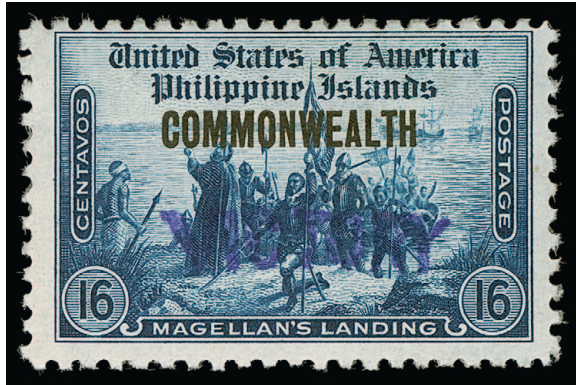


2365

- 2365 ★ **1944, 16c Dark Blue, “Victory” Ovpt. (478).** Large part original gum, rich color

FRESH AND FINE EXAMPLE OF THE 16-CENTAVOS WITH “VICTORY” OVERPRINT.

The census compiled by Geoffrey Brewster and published in *Possessions* records only 15 unused singles, two unused blocks of four and one cover with a single and one cover with a block of four, for a total of 28 examples. Signed Bloch and with additional signature and backstamp. With 2022 P.F. certificate..... 3,000.00



2366



2367

- 2366 ★ **1944, 16c Dark Blue, "Victory" Ovpt. (479).** Small part original gum, rich color, three wide margins, Fine and scarce, the census compiled by Geoffrey Brewster in *Possessions* records 31 unused, three used off cover and 21 used on cover for a total of 55 copies, signed Bloch and with additional signature and backstamp, with 2022 P.F. certificate 1,500.00
- 2367 ★ **1944, 30c Orange Red, "Victory" Ovpt. (483).** Original gum, rich color, natural gum bend, Fine, only 200 were printed, the census compiled by Geoffrey Brewster and published in *Possessions* records only 39 unused singles, an unused pair and three unused blocks of four, plus 15 used (12 are on covers), light backstamp, with 1963 P.F. certificate 800.00
- 2368 ★ **"Victory" Ovpts. Balance.** Eleven items, including Nos. 467, 469, 471 (used), 473, 474, 477, 480, 481 (block of four), 482, O38 and O41, some tropicalized or part original gum, No. 480 no gum, few small faults, Fine-Very Fine group, each with certificate and several signed Bloch.....(Website PDF) 4,385.00



2369



2370

- 2369 ★ **1926, 16c Light Olive Green, Violet Overprint (C7).** Original gum, rich color, typical centering for this issue, Fine, only 300 were overprinted, signed Bloch, with 2022 P.F. certificate 2,800.00
- 2370 ★ **1926, 10p Deep Green, Air Post (C15).** Original gum, lightly hinged, rich color, choice centering, fresh and Very Fine, only 500 were printed, signed Bloch, with 2022 P.F. certificate 1,000.00
- 2371 ★田 **1928, 2c-1p Air Post (C18-C28).** Blocks of four, original gum, some stamps Mint N.H. including entire C28 block, bright colors, Fine-Very Fine set of blocks, No. C28 with 2022 P.F. certificate, Scott value as hinged singles.....(Website PDF) 1,195.00

- 2372 (★) 1944, 4c Rose Carmine, Air Post, "Victory" Ovpt. (C63). Unused (no gum), natural straight edge at left, choice centering, small natural inclusion at upper right not noted on certificate, small thin at top also not noted on certificate, Extremely Fine appearance, only 122 stamps were overprinted and only 71 examples are recorded in the Brewster census, small backstamp, with 2022 P.F. certificate..... 3,750.00



2372



2373

- 2373 ★ 1907, 10c Ultramarine, Special Delivery, Red Ovpt., Bureau of Insular Affairs Special Printing (E2A). Original gum, h.r., radiant color, a Fine example of this scarce issue, green backstamp, with 1958 P.F. certificate..... 3,250.00

- 2374 ★ 1944, 20c Light Olive Green, Official, "Victory" Ovpt. (O43). Adhering to interleaving as usual, Very Fine, only 71 copies of both O42 and O43 were produced, with copy of 1991 P.F. certificate for block of ten 1,750.00



2374

- 2375 ★ **Philippines Balance.** 34 items, including Nos. 223, 237, 253, 254 (2), 274, C13, C14, C17, E4, E8 (used), E9 (2, one used), J5 (2), J7, blocks of four of Nos. 229 and 235, few faults, overall Fine-Very Fine, eleven with certificates(Website PDF) E. 1,500-2,000



2376

- 2376 ★ **PUERTO RICO, Ponce Provisional, 1898, 5c Violet on Yellowish (200).** Original gum, h.r., violet control mark as with all "genuine" unused examples, large margins to clear, the Ponce Provisional has historically been one of the great rarities of U.S. Possessions, but in recent years the entire issue has been discredited by a few specialists, which forces us to offer this "as is", with 1987 P.F. certificate E. 1,000-1,500



2377

- 2377 ★ **PUERTO RICO, 1898, 5c Black, Ty. II-III-IV (201).** Sheet of ten, disturbed original gum, h.r., large margins to full, with the "F. Santiago" control mark applied several times across each row, top left stamp small thin, top right stamp small diagonal crease, slight overall toning not noted on certificate

VERY FINE. AN INCREDIBLY RARE INTACT SHEET OF TEN OF THE 1898 COAMO PROVISIONAL ISSUE, SCOTT 201.

Very few sheets remain intact. This is the best way to see the major types and how they were printed. With 2022 P.F. certificate. 10,000.00

- 2378 S **PUERTO RICO, 1899, 1c-10c "Specimen" Ovpts. (210S-214S, J1S-J3S).** Original gum, h.r., rich colors, 5c straight edge at left, 10c small thin spot, Fine set, both 10c with 2022 P.F. certificate
(Photo Ex/Website PDF) 2,500.00
- 2379 ★ **Puerto Rico Balance.** 14 items, including J3, nice group of blocks of four of Revenues with "Specimen" ovpt., RE41A, UX1, UX2, UX3 (3), some faults, some Fine-Very Fine.....
(Website PDF) E. 400-500



2378EX



2380



2381

- 2380 ★ **RYUKYU ISLANDS, 1952, 100y on 2y Rose Violet (17).** Original gum, single hinge mark, bright color, Very Fine, with 2022 P.F. certificate 1,600.00
- 2381 ★ **RYUKYU ISLANDS, 1952, 100y on 2y Rose Violet, Center "0" in Wrong Font (17c).** Position 42, tropicalized original gum, choice centering, Extremely Fine example of this great rarity, this is the first we have offered since keeping computerized records 4,000.00
- 2382 ★ **Ryukyu Islands Balance.** 31 items, including Nos. 1a-7a each with top selvage, 7a, 16Ad, blocks of four of No. 14, 15 (5), 18, also 90b strip of five with top selvage and imperforate between second and third stamps, R9-R16, few faults, some Fine-Very Fine, two with certificates
(Website PDF) E. 750-1,000

GROUP LOTS

- 2383 **1851-60 Issues, Balance (9/35).** Group of 18 P.F. certified items plus a number uncertified, mostly used with a few unused, No. 9 with two strips of three and a pair, No. 10A pair, No. 11A unused block of four (no gum), Nos. 12, 18, 20 on cover, 22, 26 original gum block of four, 26A graded VF-XF 85, 30A (three), 31, 32-33 five stamps on a cover front, 33, 35 captured part imprint, 36B large part original gum, most items with faults, Scott value more than \$8,000.00**(Website PDF)** E. 1,500-2,000
- 2384 **Black Jack Collection.** Scott album full of stamps and covers and a few proofs, wide range of items including varieties such as double transfers, also two pairs of 85B, wide range of cancels, multiples including used blocks, range of covers, Revenue document, bisect on piece with blue-green cancel, strip of six of No. 93 on cover, used on 10c entire with 3c to Germany, some postal stationery, some faults, many Fine-Very Fine, a comprehensive and valuable collection..... E. 7,500-10,000
- 2385 **1861-68 Issues, Balance (63/100).** Approximately 33 items, 12 with recent P.F. certificates, largely used but some unused, some better include No. 63 original gum, 65 original gum strip of four, 67a with red cancel, 69 part original gum, three each of Nos. 71-72, 73 bisect on piece, 76 unused (no gum), 76 used strip of three, 77 pair on cover to France, 78 unused (no gum), several grills including Nos. 86, 89-90, 95, 97 and 100 (three), very mixed condition with faults, Scott value in excess of \$14,000.00**(Website PDF)** E. 2,000-3,000
- 2386 **1c-30c 1869 Pictorial Issue, Balance (112/133a).** 20 items including eight with recent P.F. certificates, mostly used with a few unused, including Nos. 112 original gum, 115, 116, 117 (two including one P.F. VF 80), 117 unused (regummed), 118 (three), 119 unused (no gum), 119 (four including one P.F. VF 80), 119 strip of three, 120 (two), 121, 123 unused, 133a unused, mixed condition, a few sound with clear P.F. certificates, overall Fine, Scott value exceeds \$8,000.00**(Website PDF)** E. 1,500-2,000
- 2387 **Unused Bank Notes.** 31 items, including Nos. 146, 148, 149, 153, 155, 157, 158 block of four, 161 (2), 179, 185, 189, 190 (2), 211, 214 (single and block of four), 215 (3), 216, 217 (2), 218, 225 block of four, 227, 228, 229 (2), some faults including some reperfed or regummed, otherwise Fine-Very Fine group, 13 with P.F. certificates, Scott value in the neighborhood of \$13,000.00+**(Website PDF)** E. 1,500-2,000
- 2388 **Used Bank Notes.** 23 used stamps, including Nos. 134 (possibly an I Grill), 137, 151 (3), 152, 153 (3), 155 (3), 163, 165, 166, 191, some faults including a few reperfed, otherwise Fine-Very Fine, six with certificates, Scott value in excess of \$5,000.00.....**(Website PDF)** E. 750-1,000
- 2389 ★ **Columbian Issue Balance.** 20 mostly unused items, including unused Nos. 232 (3), 233 (block of four), 235 imprint and plate no. strip of three, 236 (3 singles and block of four), 237 (4), 238 (2), 239, 240 (4), used No. 241, few possibly Mint N.H., few faults, overall Fine-Very Fine, Scott value as hinged approximately \$4,400.00**(Website PDF)** E. 750-1,000
- 2390 **1894-98 Bureau Issues Balance.** 15 items, including unused imprint and plate no. strip of three of Nos. 250, 279, 280 and 283, singles of Nos. 251, 257, 258, 259, 260 and 284, also 266-267 pair, booklet panes of 279Bj, 279Bk, used 277, block of six of 282 with imprint and wide selvage, some faults, some appear Fine-Very Fine, two with certificates.....**(Website PDF)** E. 400-500
- 2391 ★ **Trans-Mississippi and Pan-American Balance.** 30 items, including imprint and plate no. blocks of four of Nos. 285 and 286, imprint and plate no. pairs of Nos. 285 (used), 286 and 288, blocks of four of Nos. 288, 290 (left arrow), 295 (2), 296, 297 and 299, singles of Nos. 287 (2), 288 (3, including one Mint N.H.), 290, 292 (used), 294-299, additional Mint N.H. 296 graded VF-XF 85, also 299 strip of three, few Mint N.H., few faults, overall a Fine-Very Fine group, two with certificates**(Website PDF)** E. 1,000-1,500
- 2392 ★ **1902 Issue Balance.** 24 items, including booklet panes Nos. 300b (2), 301c (2), 319g, 319n (2) and 319q, plate block of 302, blocks of four of Nos. 303 (2) and 307, singles including Nos. 305, 309 (3), 310 (2) and 311, pair of No. 315 (thin spot and edge toning), also two blocks of six of Nos. 314 and 320, overall fresh and Fine-Very Fine, two with certificates.....**(Website PDF)** E. 1,500-2,000
- 2393 ★ **Early Commemoratives Balance.** Approximately 37 mostly unused items, including singles of Nos. 325 (3), 326 (2), 327, 369 (2, one used), 400, 402, 403 and 404, blocks of four of Nos. 324, 328, 329, 368 (2), 371 (2), 373, 399 and 550, plate blocks of Nos. 329 (Mint N.H. plate block of 15, perf separations), 330 (on dealer sheet as Mint N.H. but we believe regummed), 372, 373 (2), 397, 401, 537 (3), 614 (3), some Mint N.H., few faults, four with certificates..**(Website PDF)** E. 1,500-2,000
- 2394 ★ **Washington-Franklin Issues Balance.** Approximately 100 mostly unused singles and blocks, singles include Nos. 342, 419 (2), 422 (2), 423, 438, 460, 461 (2), 475 (2), 477 and 479 with P.F. certificates as sound Mint N.H. but we believe both reperfed, 480, 518 (2), 524 (2), blocks of four include Nos. 333, 334, 429, 514, 516, 518, 532, 533 and 545, others such as 357 pair, 519 pair, coils with certificates include 411 line pair, 443 line strip of four, 446 single, 447 line pair, 454 single and pair, 456 single, booklet panes of 374a (3), 375a (2), a few coils are reference items, some faults, overall Fine-Very Fine, 25 with certificates**(Website PDF)** E. 3,000-4,000
- 2395 ★★ **Booklet Accumulation, 1914-58.** Scott album full of intact booklets, also nice group from 1908 thru Liberties, many (approximately 125) with partial plate nos., range of issues with much duplication, each identified by BK no., overall fresh and Fine-Very Fine, meticulously catalogued by the owner at \$11,834.00 (combination of Scott and Durland values)..... E. 2,000-3,000

- 2396 ★田 **3c-10c Kans., Nebr. Overprints, Plate Blocks (661/678).** 13 plate no. blocks of four, nearly all with a couple of stamps hinged and a couple Mint N.H., including Nos. 661-662, 663 (two, one Mint N.H.), 664-665, 668 (two), 674 (two), 676-678, Fine-Very Fine and attractive group(Website PDF) 4,850.00
- 2397 ★★田 **1c-10c Kans., Nebr. Overprints, Blocks (666/679).** Ten blocks of four (one is a block of nine), essentially if not all Mint N.H., including Nos. 664-666, 669 (block of nine), 672-673, 675, 677-679, Fine-Very Fine, Scott value as singles approximately(Website PDF) 2,800.00
- 2398 ★★田 **National Parks and Famous Americans Matched Plate Block Collection.** Scott album of matched plate blocks for the National Parks and Famous Americans issues, includes all four positions for every plate number used, mostly Mint N.H., overall Fine-Very Fine, a very difficult group to assemble, Scott value approximately \$4,326.00..... E. 750-1,000
- 2399 ★★田 **1930's Issues Sheets (577, 752-771).** Large group of full sheets plus some half sheets, one No. 577 (Scott value for this alone \$1,300.00), the others are Farley sheets without gum including Nos. 752-771, six with two examples, the half sheets include a full set of National Parks, a few minor edge nicks or flaws but overall a fresh and Very Fine group(Website PDF) E. 750-1,000
- 2400 ★ **20th Century Balance.** Dozens of single stamps, multiples or sets on dealer stock sheets with identifications, mostly Mint N.H., a number of 1922 issue blocks including some plate blocks, singles include a number of Kansas-Nebraska with P.S.E. grades in the 85 range and Mint N.H. No. 664 graded 95, many with Scott values in the multi-hundreds, overall Very Fine, more than ten certificates accompany, Scott value in excess of \$12,000.00(Website PDF) E. 3,000-4,000
- 2401 ★★ **Modern Errors.** 22 errors plus a freak on dealer stock sheets with descriptions, nice range from No. 720c thru later and a couple of Air Post, Very Fine group, seven P.F. certificates accompany, Scott value approximately \$6,800.00 including individual items priced in Scott up to \$725.00.....(Website PDF) E. 1,500-2,000
- 2402 ★ **Air Post Balance.** 14 items, mostly unused with some Mint N.H., singles include Nos. C2, C4-C6, C14 (used), C18, C23c, blocks include C4 (two, one with plate no.), plate blocks include C4 and C18, overall Very Fine group, Scott value exceeds \$2,400.00(Website PDF) E. 750-1,000
- 2403 ★★ **Air Post Booklet Accumulation, 1943-73.** Scott album of complete booklets, with much duplication, also individual panes including many (approximately 54) with partial plate numbers, overall fresh and Fine-Very Fine, meticulously catalogued by the owner at \$4,687.00 with no premium for the plate no. positions E. 500-750
- 2404 ★ **Special Delivery Issues Balance.** 23 items nearly all unused, 13 with P.F. certificates, several are graded, starting with E2 and ending with E15, plus the F1 stamp, highlights include two E2 original gum, three E7 blocks, several E11 "Pink Backs" including graded, E12 First Day, E15a block of four with plate no., E15c, others, mostly good condition with some faults, overall Fine-Very Fine or appear so..... E. 1,500-2,000
- 2405 ★ **Postage Due Issues Balance.** Approximately 35 items or small groups of items, including eight with P.F. certificates, from J1 thru J92, mostly unused with original gum plus a few used, a number better, mixed condition with faults on many, overall Fine-Very Fine or appear so, Scott value in excess of \$13,000.00(Website PDF) E. 2,000-3,000
- 2406 **Postage Due and Parcel Post Collection.** Scott album containing Postage Due, Parcel Post, Parcel Post Postage Due and Special Handling stamps, including some used, unused and blocks, much duplication, few faults, overall Fine-Very Fine, owner's meticulous catalogue value \$18,770.00 E. 2,000-3,000
- 2407 **Officials Balance.** Extensive balance of more than 45 items including singles, blocks, plate blocks and larger multiples, mostly unused with original gum but some no-gum or regummed, also some used, approximately 75% of items are accompanied by new P.F. certificates, catalogue values to more than \$1,000.00, very mixed condition, Scott value probably in excess of \$25,000.00(Website PDF) E. 3,000-4,000
- 2408 ★ **Newspapers & Periodicals Balance.** Group including seven large format issues, six stamps between Nos. PR35 and PR78, each of those with a P.F. certificate, finally three sets of PR114-PR125, mixed condition with faults, overall Fine appearance.....(Website PDF) E. 1,000-1,500
- 2409 ★ **Back-of-Book Collection.** Scott album containing Special Delivery, Registration, Offices in China and Officials, including significant duplication of many issues including three sets of K1-K14, Officials with used and unused, some faults, many Fine-Very Fine, meticulously catalogued by the owner at \$40,703.00 E. 5,000-7,500
- 2410 ★ **Back-of-Book Balance.** 50 items, including singles of Nos. K6, K10, K13, K15, K16 (2), Q10 (2), Q12, plate block of QE4a, some Revenues such as RD338, RD260, RF11, RVB1-RVB2, some Savings stamps, some dummy booklets, entire, few other interesting, some faults, some Fine-Very Fine, a diverse group, six with certificates(Website PDF) E. 1,500-2,000

END OF SALE — THANK YOU



BIDS

Use this form to submit absentee bids
or to confirm telephone bids

Sale 1285

May 4, 2023

PADDLE #

1

Please provide the following information:

NAME

ADDRESS

CITY/STATE/ZIP

PHONE MOBILE

EMAIL

2

Have you purchased from us in the past 5 years? ☐ Yes (please go to Section 3)
☐ No (references required below)

STAMP FIRM PHONE

STAMP FIRM PHONE

Please submit references at least **2 business days** before the sale. Bids from new clients will not be executed if satisfactory references are not received in time to be contacted.

3

- Enter the lot number and your corresponding maximum bid in the space below
- Use whole dollar amounts and bid according to the increments (see back of form)
- Bids do not include the **18% Buyer's Premium**, taxes, duty or shipping charges
- Absentee bids will advance at one increment over the next highest competing bid
- "Plus", "Break Tie" or "Buy" bids will not be executed
- Indicate any "Or" bids between lot number/bid entries and bracket your choices
- If you wish to limit the total amount of your bids, follow the instructions below

Lot #	Bid \$	Lot #	Bid \$	Lot #	Bid \$

☐ **Limit Bids:** Check this box if you wish to limit the total hammer price of your bids (excluding 18% Buyer's Premium, taxes, duty and shipping costs). Your bids will be executed until your bidding limit has been reached. The total amount you wish to bid is \$

4

By signing this form, you agree to all of the Conditions of Sale printed in the sale catalogue (printed and digital), including but not limited to a) payment in the manner demanded by the Siegel firm, and b) payment of the 18% Buyer's Premium, any sales tax or customs duty, shipping costs, late charges and

other prescribed charges. You agree that your bids will be executed as a courtesy by Siegel, but you waive the right to make any claim against Siegel or its employees arising from these bids or your participation in the sale. You agree to honor all bids as submitted, regardless of any errors or omissions.

SIGNED DATE

Mail the signed form to Siegel Bid Department, 21 West 38th St., 7th Floor, New York, NY 10018
or email to stamps@siegelauctions.com



Additional Bids

Sale 1285

May 4, 2023

PADDLE #

Lot #	Bid \$	Lot #	Bid \$	Lot #	Bid \$

Shipping & Insurance

We will be pleased to arrange for shipping and transit insurance for purchases in this sale, except for lots marked or announced as "floor sale only." To expedite billing and delivery to hundreds of buyers in each sale, we use standard charges for postage and insurance under our policy. These charges are based on the package weight and mailing requirements, according to the schedule shown here. Our standard charges do not include a fee for our services, and they may be slightly more or less than the actual postage or Fedex fee. We ask all buyers to remit the invoiced amount for shipping and insurance.

Transit insurance is provided in all cases, except when the buyer has furnished us with documentation that insurance is effective under the buyer's own policy.

There will be no added insurance charge for shipments of less than \$75,000 value. Shipments valued in excess of \$75,000 may require supplemental insurance and/or special courier service, the estimated cost of which will be furnished to the buyer prior to shipment. If the buyer refuses to pay the estimated charges or furnish proof of self-insured coverage, the buyer will be responsible for picking up the lots at our office and any resulting sales tax.

Bidding Increments

The auctioneer may regulate the bidding at his discretion. However, to assist absentee bidders in establishing their maximum bids, the increments shown here will be used in most cases. We recommend that written bids conform to these increments—bids that do not will be reduced accordingly.

Standard Shipping Charges

Weight Class	Shipping Method	Charge
Up to 2 lbs.	Fedex Envelope	\$25
Over 2 lbs.	Fedex Box	\$35 - \$50*
Outside US	Fedex	\$50 - \$100**
Bulky Lots	Fedex Ground or Express	By weight
Value under \$500	Priority Mail Env	\$10.00
hammer	Priority Mail Box	\$25 - \$35
* Up to \$75,000 value and up to 5 lbs; additional charge may apply to packages exceeding limits		
** Buyers outside United States are liable for any applicable customs duty and clearance charges. An accurate declaration of contents and value will be made on all packages and import/export documents. Siegel may refuse to ship lots to certain countries with a high risk factor.		

2/2021

Bid	Increment	Bid	Increment
Up to \$200	\$10	\$20,000-30,000	\$1,000
\$200-500	\$25	\$30,000-70,000	\$2,500
\$500-1,000	\$50	\$70,000-140,000	\$5,000
\$1,000-3,000	\$100	\$140,000-500,000	\$10,000
\$3,000-7,000	\$250	\$500,000-\$1m	\$25,000
\$7,000-20,000	\$500	Above \$1m	Discretionary